

資 料

Tentative Report on Activities of Japan Disaster Relief (JDR)
Medical Team (1st Batch) for the Nias Earthquake Disaster
[March 28, 2005]

April 9, 2005

Japan Disaster Relief Medical Team
Leader : Mr. AOYAMA Shigeya
Sub-leader: Dr. OTOMO Yasuhiro

H.E. Tenguku Rizal Nurdin
Governor of North Sumatra,
Republic of Indonesia

Your Excellency,

Please accept our medical report attached to this letter. Japan Disaster Relief (JDR) Medical Team, comprising 11 Japanese members, was sent to Indonesia for the earthquake relief by the Government of Japan / Japan International Cooperation Agency (JICA) on March 30 at the request of the Government of Indonesia. The Government of Japan also extended emergency grants including tents, blankets, generators, plastic cloth, water purification machine and so forth. Thereafter, the Team has been engaged in medical activities for the earthquake relief especially in the Regency of Gunung Sitoli of Nias island.

As of April 8, 2005, The JDR Medical Team members, examined more than 900 patients during the eight-day-long activities, and I am confident that the contribution of the team has benefited the local people of Nias. I sincerely appreciate your kind cooperation especially in supporting our activities.

I would like to express my sincere gratitude for the assistance, friendship and kindness extended by your local government and local people. I do hope that Nias will achieve a quick recovery and local people will be able to enjoy their daily life on a beautiful island.

Yahowu !

Sincerely yours,

Mr. AOYAMA Shigeya
Leader, Japan Disaster Relief (JDR) Medical Team

Dr. OTOMO Yasuhiro
Sub-leader, JDR Medical Team

1. Brief outline on the activities

The Japan Disaster Relief Medical Team (hereafter “the Team”) left Japan on March 30, 2005, arrived in Medan in the night on the same day. And the team moved to Nias on March 31, and immediately started medical activities at the Gunung Sitoli General Hospital (RSU) on the same night. The activities there continued until April 2, 2005.

The team then continued the activities by establishing a field clinic right in front of the Nias Regent Residence (Pendopo) in Gunung Sitoli starting from April 3, 2005. To support the activities, the team set up a main tent for treatment, 4 small tents for storage (medicines and medical equipments), 1 small tent for pharmacy, 2 small tents for patient’s waiting room and interview room.

The activity of 1st Batch team will be handed over to the 2nd Batch team on April 10.

2. Contents of activities and trend of disease

The 1st Batch Team conducted medical activities in Gunung Sitoli for nine days from March 31 to April 9, having permission from the North Sumatra Government and Nias Regent Government. As of April 8, 2005, The total number of patients were 908. We expect the number will exceed 1050 by April 9.

The most frequent cases were acute respiratory infection (ARI) including pneumonia, and Trauma, Psychiatric, Dermatitis, Digestive diseases were also seen.

1) ARI; The majority of ARI patients were minor cases. There were, however, pneumonia/bronchopneumonia cases who needed antibiotics administration has been increasing in these couple of days.

2) Trauma; Almost all trauma patients had severe wound infection even though some cases underwent primary treatment at the day of the earthquake. All infected wound underwent debridement, finger/toe amputation, wound irrigation and delayed primary suture.

3) Psychiatric; Very large number of patients complaint sleep disturbance that caused variety of physical derangement such as palpitation, dizziness, headache and so forth. There were very few patients who manifested typical acute stress reaction.

4) Dermatitis; Substantial number of infectious dermatitis due to very bad living environment, such as Impetigo, Staph. aureus or Streptococcus infection visited our clinic. And such kind of patients has a tendency to increase.

5) Digestive; As of April 8, epidemic of infectious enteric diseases is not evident. Recent couple of days, however, we treated several number of infants and small children who manifested severe watery diarrhea. Those patients underwent intravenous infusion to correct moderate to severe dehydration.

6) Malaria test; We performed Malaria rapid test (OPTIMAL) in 10 patients who manifested very high fever. So far, all results were negative.

3. Analysis of data of patients

The result of analysis of data of patients is seen in the Attachment (3).

4. Recommendations

(4-1) Diarrhea

- Patients with diarrhea, especially with severe dehydration, were seen.
- Epidemic of infectious enteric diseases is not evident, so far. However, according to recent increase of severe diarrhea cases there is a possibility of epidemic of diarrhea in this district. There is a need for a careful observation over the development of the situation as well as some precautionary measures.

(4-2) Respiratory and skin infection

- There is a tendency of increasing number in patients who have pneumonia and skin infectious diseases due to very bad living environment.
- Epidemic of infectious respiratory or skin diseases could be a real threat unless internally displaced people were provided appropriate shelters.

Attachment:

1. Team members list
2. 1st Batch JDR Team Operation Schedule
3. Analysis of data of patients

Team Members List

A. 1st Batch JDR Medical team: (term: March 31 - April 10)

- | | |
|---------------------------|----------------------|
| 1. Mr. AOYAMA Shigeya | Leader |
| 2. Mr. OHTOMO Yasuhiro | Doctor / Vice leader |
| 3. Mr. ONO Tatsuo | Coordination |
| 4. Mr. SHOKO Tomohisa | Doctor |
| 5. Ms. LIN Harumi | Nurse |
| 6. Ms. OSAWA Shiho | Nurse |
| 7. Ms. YAMASAKI Noriko | Nurse |
| 8. Ms. KATO Ayumi | Pharmacist |
| 9. Mr. TABUCHI Shunji | Paramedic |
| 10. Mr. KIBE Yoshimichi | Paramedic |
| 11. Mr. ICHIHARA Masayuki | Coordination |

B. Interpreters: (mobilized from Medan)

1. Ms. Herlina Hutagalung
2. Mr. Ahmad Hanafi
3. Mr. Yulianus Harefa
4. Mr. Sisilo Sudarman
5. Mr. Yudi

C. Coordination team: (staffs supporting logistical coordination & management in rotation from the JICA Indonesia Office, Embassy of Japan in Jakarta and Consulate-General in Medan)

1st Batch JDR Team's Operation Schedule

March 30, 2005:	Tokyo - Jakarta - Medan Stay overnight at Medan
<hr/>	
March 31, 2005:	Medan - Nias (Team + medicines and medical equipments)
[Group 1]	Support the medical treatment at the Gunung Sitoli General Hospital [Nias Regency]
[Group 2]	Conduct coordination meeting with the local government for the preparation of field clinic establishment [Medan]
<hr/>	
April 1, 2005:	Medan - Nias (Team + medicines and medical equipments)
[Group 1]	Support the medical treatment at the Gunung Sitoli General Hospital [Nias Regency]
[Group 2]	Conduct observation in order to select the site/location of field clinic establishment [Nias Regency]
<hr/>	
April 2, 2005:	Medan - Nias (Medicines and medical equipments only)
[Group 1]	Support the medical treatment at the Gunung Sitoli General Hospital [Nias Regency]
[Group 2]	Establish the JDR field clinic by setting up tents for medical treatment in front of the Nias Regent's office (Pendopo)
<hr/>	
April 3, 2005:	Nias Conduct medical treatment at the JDR field clinic. The activities of the team in Nias will end on April 10, 2005.

Analysis of data of patients

1 Daily Patients number

	31-Mar	1-Apr	2-Apr	3-Apr	4-Apr	5-Apr	6-Apr	7-Apr	8-Apr	9-Apr	
New	1	9	25	78	166	117	138	135	153	142	
Re-visit					2	14	19	25	26	28	
Total						131	157	160	179	170	1078

Site	31-Mar	1-Apr	2-Apr	3-Apr	4-Apr	5-Apr	6-Apr	7-Apr	8-Apr	9-Apr	Total
1	1	9	16	0	0	0	0	0	0	0	27
2	0	0	2	78	167	131	157	160	168	169	1034
3	0	0	7	0	0	0	0	0	11	1	22

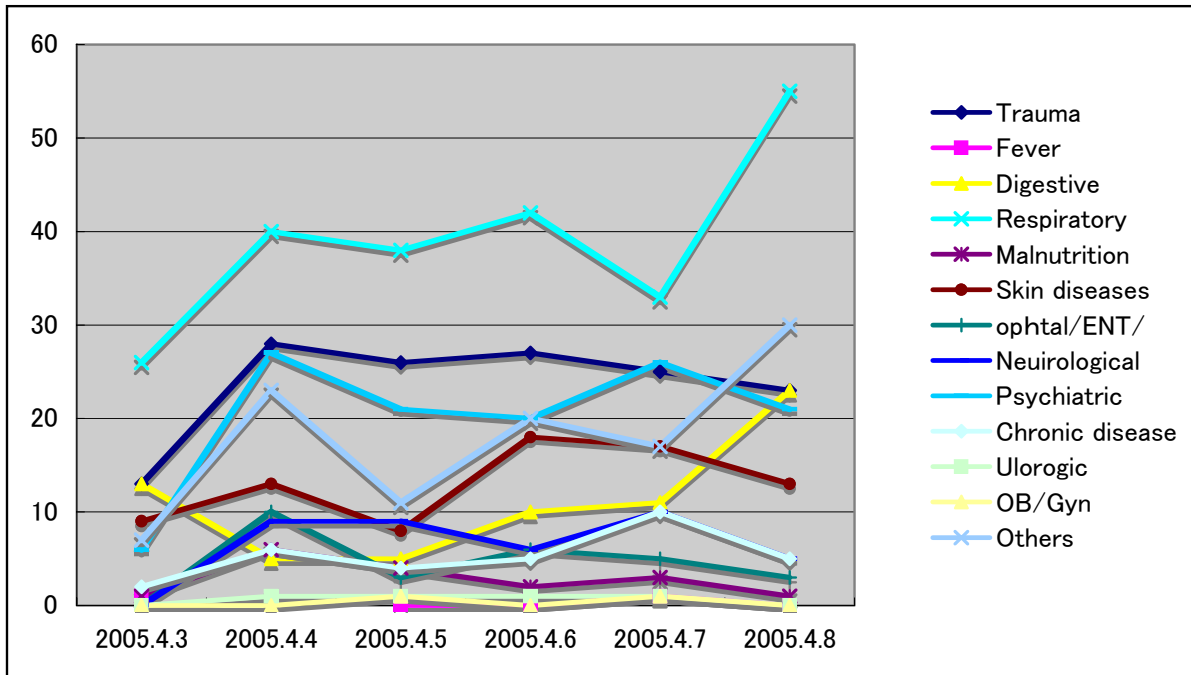
2 Age distribution

	31-Mar	1-Apr	2-Apr	3-Apr	4-Apr	5-Apr	6-Apr	7-Apr	8-Apr	9-Apr	Total
Child (0-6 y/o)	1	0	1	12	22	14	21	27	43	54	195
Adult (6-50 y/o)	0	6	17	52	123	94	108	105	100	81	686
Elderly (50- y/o)	0	3	7	14	23	23	28	28	36	35	197
	1	9	25	78	168	131	157	160	179	170	1078

3 Breakdown of diseases

	31-Mar	1-Apr	2-Apr	3-Apr	4-Apr	5-Apr	6-Apr	7-Apr	8-Apr	9-Apr	Total
Trauma	0	9	15	13	28	26	27	25	23	27	193
Fever	0	0	0	1		0	0	1	0	1	3
Digestive	0	0	0	13	5	5	10	11	23	20	87
Respiratory	0	0	8	26	40	38	42	33	55	47	289
Malnutrition	1	0	0	1	6	4	2	3	1	3	21
Skin diseases	0	0	1	9	13	8	18	17	13	17	96
ophthal/ENT	0	0	0	0	10	3	6	5	3	7	34
Neurological	0	0	0	0	9	9	6	10	5	7	46
Psychiatric	0	0	0	6	27	21	20	26	21	16	137
Chronic disease	0	0	0	2	6	4	5	10	5	4	36
Urologic	0	0	1	0	1	1	1	1	0	4	9
OB/Gyn	0	0	0	0	0	1	0	1	0	0	2
Others	0	0	0	7	23	11	20	17	30	17	125

Figure 1 Daily trends of diseases



4 Treatment performed

	31-Mar	1-Apr	2-Apr	3-Apr	4-Apr	5-Apr	6-Apr	7-Apr	8-Apr	9-Apr
1.Wound care(miner)	0	2	7	3	4	6	11	15	17	23
2.Wound care(dee)	0	5	4	6	9	9	12	9	4	7
3.Injection	0			0	1	1	1	2	0	0
4.Infusion	1			0	4	2	4	5	4	9
5.Other	0	2	14	69	150	113	129	129	154	131

Final Report on Activities of Japan Disaster Relief (JDR)
Medical Teams for the Nias Earthquake Disaster
[March 28, 2005]

April 16, 2005

Japan Disaster Relief Medical Team(2nd Batch)

Leader : Mr. MOCHIZUKI Hisanobu

Sub-leader: Dr. ASAHI Shigeki

H.E. Tengku Rizal Nurdin
Governor of North Sumatra,
Republic of Indonesia

Your Excellency,

Please accept our final report attached to this letter. Japan Disaster Relief (JDR) medical teams, comprising total 27 Japanese members(1st batch:11 ,2nd batch:17 including 1 member for whole period), were sent to Indonesia for the earthquake relief by the Government of Japan / Japan International Cooperation Agency (JICA) between March 30 and April 17 at the request of the Government of Indonesia. The Government of Japan also extended emergency grants including tents, blankets, generators, plastic cloth, water purification machine and so forth.

The JDR teams have been engaged in medical activities for the earthquake relief especially in the Regency of Gunung Sitoli of Nias island. They examined almost 2,000 patients over the two-week-long activities, and I am confident that the contribution of the teams has benefited the local people of Nias. I sincerely appreciate your kind cooperation especially in supporting our activities.

I would like to express my sincere gratitude for the assistance, friendship and kindness extended by your local government and local people. I do hope that Nias will achieve a quick recovery and local people will be able to enjoy their daily life on a beautiful island.

Yahowu !

Sincerely yours,

Mr. MOCHIZUKI Hisanobu
Leader, Japan Disaster Relief (JDR) Medical Team(2nd Batch)

Dr. ASAHI Shigeki
Sub-leader, JDR Medical Team(2nd Batch)

1. Brief outline of the activities

The Japan Disaster Relief medical teams composed from the 1st team (March 30-April 9) & the 2nd team (April 10-April 15) have conducted emergency medical service in Nias island, Indonesia.

The 1st team left Japan on March 30, 2005, arrived in Medan at night on the same day. The team moved to Nias on March 31, and immediately started medical activities at the Gunung Sitoli General Hospital (RSU) on the same night.

The activities expanded on April 3 by establishing a field clinic right in front of the Nias Regent Residence (Pendopo) in Gunung Sitoli. To support the activities, the team set up a main air-flamed tent for treatment, 4 small tents for storage (medicines and medical equipments), 1 small tent for pharmacy, 2 small tents for patient's waiting room and interview room.

The 2nd team took over the field clinic on April 10 and continued service by April 15. After the completion of activities all facilities, medical equipments and medicine will now be handed over to the Nias Regent.

2. Contents of activities and trend of disease

Having permission from the North Sumatra Government and Nias Regent Government, the 1st team conducted medical activities in Gunung Sitoli for nine days until April 9, and the 2nd team for six days from April 10 to 15 April. The total number of patients were almost 2,000.

The most frequent cases were acute respiratory infection (ARI) including pneumonia, and Trauma, Digestive, Dermatitis and Psychiatric diseases were seen.

1) ARI; The majority of adult ARI patients were not serious cases. There were, however, pneumonia/bronchopneumonia cases in children who needed antibiotics administration has been gradually increasing. Two months girl who showed severe dyspnea was treated and was transferred to the US navy hospital ship "MERCY" by helicopter.

2) Trauma; Some trauma patients had severe wound infection by inappropriate first aid even though many cases underwent primary treatment at the day of the earthquake. All infected wound underwent debridement. Some were amputated finger or toe, wound irrigation and delayed primary suture had been done.

3) Psychiatric; Very large number of patients complaint fear of aftershock, sleep disturbance that caused variety of physical derangement such as palpitation, dizziness, headache and so forth. There were very few patients who manifested typical acute stress reaction. After careful physical examination, they were administrated minor tranquilizers.

4) **Dermatitis;** Substantial number of infectious dermatitis due to deteriorated living environment, such as Impetigo, Staph. aureus or Streptococcus infection visited our clinic. Allergic skin reaction caused by unfamiliar relief substance(instant noodles) were also acknowledged.

5) **Digestive;** Epidemic of infectious enteric diseases were not evident. However, we treated quite large number of infants and small children who manifested severe diarrhea with dehydration. Those patients underwent intravenous drip infusion in appropriate manner.

6) **Malaria test;** We performed Malaria rapid test (OPTIMAL) in 10 patients who manifested very high fever. One case, 10 years girl showed positive outcome.

3. Analysis of data of patients

The result of analysis of data of patients is seen in the Attachment 3.

4. Recommendations

(4-1) Diarrhea

- Patients with diarrhea, especially with severe dehydration in children are to be treated appropriately.
- Epidemic of infectious enteric diseases such as cholera are not evident. However, according to recent increase of severe diarrhea cases are to be examined to rule out epidemic of diarrhea in this district. There is a need for rapid clinical examination over the development of the situation as well as primary healthcare services and appropriate oral dehydrate solution(ORS) treatment with providing clear safe water should be prevailed widely. Also keeping personal hygiene is essential component of primary healthcare.

(4-2) Respiratory infection and skin diseases

- There is a tendency of increasing number in patients who have pneumonia and skin infectious diseases due to deteriorated living environment are to be managed by further strengthening public health services.
 - Epidemic of infectious respiratory or skin diseases could be a real threat unless internally displaced people were provided appropriate shelters.

(4-3) Against Malaria and other pandemics

- There was one positive case in blood test of Malaria. To prevent from malaria pandemics after such severe disaster, anti-malaria countermeasure should be considered from the first recover stage. All early symptoms of signs of severe infectious diseases are to be informed widely. Mosquito net and anti-malaria drugs provision are to be started.

(4-4)Early strengthening local public health service

· In order to avoid necessary critical diseases and to protect health of suffered displaced people, strengthening and supporting local health service should be considered. Prevailing personal hygiene knowledge and manners through primary health care would be useful to rebuild healthy island of Nias, Indonesia.

Attachment:

1. Team members list
2. JDR Team Operation Schedule
3. Analysis of data of patients

Team Members List

A. 1st Batch JDR Medical Team: (term: March 31 - April 9)

- | | |
|---------------------------|----------------------|
| 1. Mr. AOYAMA Shigeya | Leader |
| 2. Mr. OHTOMO Yasuhiro | Doctor / Vice leader |
| 3. Mr. ONO Tatsuo | Coordination |
| 4. Mr. SHOKO Tomohisa | Doctor |
| 5. Ms. LIN Harumi | Nurse |
| 6. Ms. OSAWA Shiho | Nurse |
| 7. Ms. YAMASAKI Noriko | Nurse |
| 8. Ms. KATO Ayumi | Pharmacist |
| 9. Mr. TABUCHI Shunji | Paramedic |
| 10. Mr. KIBE Yoshimichi | Paramedic |
| 11. Mr. ICHIHARA Masayuki | Coordination |

B. 2nd Batch JDR Medical Team: (term: April 10-15)

- | | |
|----------------------------|----------------------|
| 1. Mr. MOCHIZUKI Hisanobu | Leader |
| 2. Mr. ASAHI Shigeki | Doctor / Vice leader |
| 3. Mr. HARADA Katsunari | Coordination |
| 4. Mr. TSUKAMOTO Katsuyuki | Doctor |
| 5. Ms. AOYAMA Takako | Doctor |
| 6. Ms. TANAKA Kahoru | Nurse |
| 7. Ms. KATO Shoko | Nurse |
| 8. Ms. HIRONAKA Yoko | Nurse |
| 9. Ms. KAWATANI Yoko | Nurse |
| 10. Mr. SAKAMOTO Naruyuki | Pharmacist |
| 11. Mr. KOBAYASHI Tsutomu | Paramedic |
| 12. Mr. SUZUKI Yasushi | Paramedic |
| 13. Mr. ONO Tatsuo | Coordination |
| 14. Ms. UTSUMIYA Naoko | Coordination |
| 15. Ms. IZUMI Satoko | Paramedic |
| 16. Mr. AKIYAM Junichi | Coordination |
| 17. Ms. MIZOE Keiko | Coordination |

C. Interpreters: (mobilized from Medan)

1. Ms. Herlina Hutagalung
2. Mr. Ahmad Hanafi
3. Mr. Yulianus Harefa
4. Mr. Sisilo Sudarman
5. Mr. Masyudi Tanjung
6. Ms. Dominiria Hulu

D. Coordination team: (staffs supporting logistical coordination & management in rotation from the JICA Indonesia Office, Embassy of Japan in Jakarta and Consulate-General in Medan)

JDR Team's Operation Schedule

March 30, 2005:	Tokyo - Jakarta - Medan Stay overnight at Medan
<hr/>	
March 31, 2005:	Medan - Nias (Team + medicines and medical equipments)
[Group 1]	Support the medical treatment at the Gunung Sitoli General Hospital [Nias Regency]
[Group 2]	Conduct coordination meeting with the local government for the preparation of field clinic establishment [Medan]
<hr/>	
April 1, 2005:	Medan - Nias (Team + medicines and medical equipments)
[Group 1]	Support the medical treatment at the Gunung Sitoli General Hospital [Nias Regency]
[Group 2]	Conduct observation in order to select the site/location of field clinic establishment [Nias Regency]
<hr/>	
April 2, 2005:	Medan - Nias (Medicines and medical equipments only)
[Group 1]	Support the medical treatment at the Gunung Sitoli General Hospital [Nias Regency]
[Group 2]	Establish the JDR field clinic by setting up tents for medical treatment in front of the Nias Regent's office (Pendopo)
<hr/>	
April 3-15, 2005:	Nias Conduct medical treatment at the JDR field clinic. The activities of the team by April 15, 2005.

Analysis of data of patients

Table 1 Daily Patients number

	31-Mar	1-Apr	2-Apr	3-Apr	4-Apr	5-Apr	6-Apr	7-Apr	8-Apr	9-Apr	11-Apr	12-Apr	13-Apr	14-Apr	15-Apr
New	1	9	25	78	166	117	138	135	153	142	126	122	153	191	134
Re-visit					2	14	19	25	26	28	45	20	27	33	24
Total						131	157	160	179	170	171	142	180	224	158
	1953														

Table 2 Age distribution

	31-Mar	1-Apr	2-Apr	3-Apr	4-Apr	5-Apr	6-Apr	7-Apr	8-Apr	9-Apr	11-Apr	12-Apr	13-Apr	14-Apr	15-Apr
Child (0-6 y/o)	1	0	1	12	22	14	21	27	43	54	29	21	35	45	33
Adult (6-50 y/o)	0	6	17	52	123	94	108	105	100	81	102	90	103	131	95
Elderly (50- y/o)	0	3	7	14	23	23	28	28	36	35	40	31	42	48	30

Table 3 Breakdown of diseases

	31-Mar	1-Apr	2-Apr	3-Apr	4-Apr	5-Apr	6-Apr	7-Apr	8-Apr	9-Apr	11-Apr	12-Apr	13-Apr	14-Apr	15-Apr
Trauma	0	9	15	13	28	26	27	25	23	27	19	16	19	17	15
Fever	0	0	0	1		0	0	1	0	1	2	0	2	3	0
Digestive	0	0	0	13	5	5	10	11	23	20	18	15	14	18	15
Respiratory	0	0	8	26	40	38	42	33	55	47	36	26	36	70	35
Malnutrition	1	0	0	1	6	4	2	3	1	3	7	0	0	4	0
Skin diseases	0	0	1	9	13	8	18	17	13	17	12	13	24	22	15
ophthal/ENT/	0	0	0	0	10	3	6	5	3	7	10	9	8	10	8
Neurological	0	0	0	0	9	9	6	10	5	7	29	37	32	40	25
Psychiatric	0	0	0	6	27	21	20	26	21	16	17	12	20	15	22
Chronic disease	0	0	0	2	6	4	5	10	5	4	15	7	15	13	10
Ulorogic	0	0	1	0	1	1	1	1	0	4	1	1	1	1	1
OB/Gyn	0	0	0	0	0	1	0	1	0	0	1	1	2	3	0
Others	0	0	0	7	23	11	20	17	30	17	4	5	7	8	12

Analysis of data of patients
 Figure 1 Daily trends of diseases

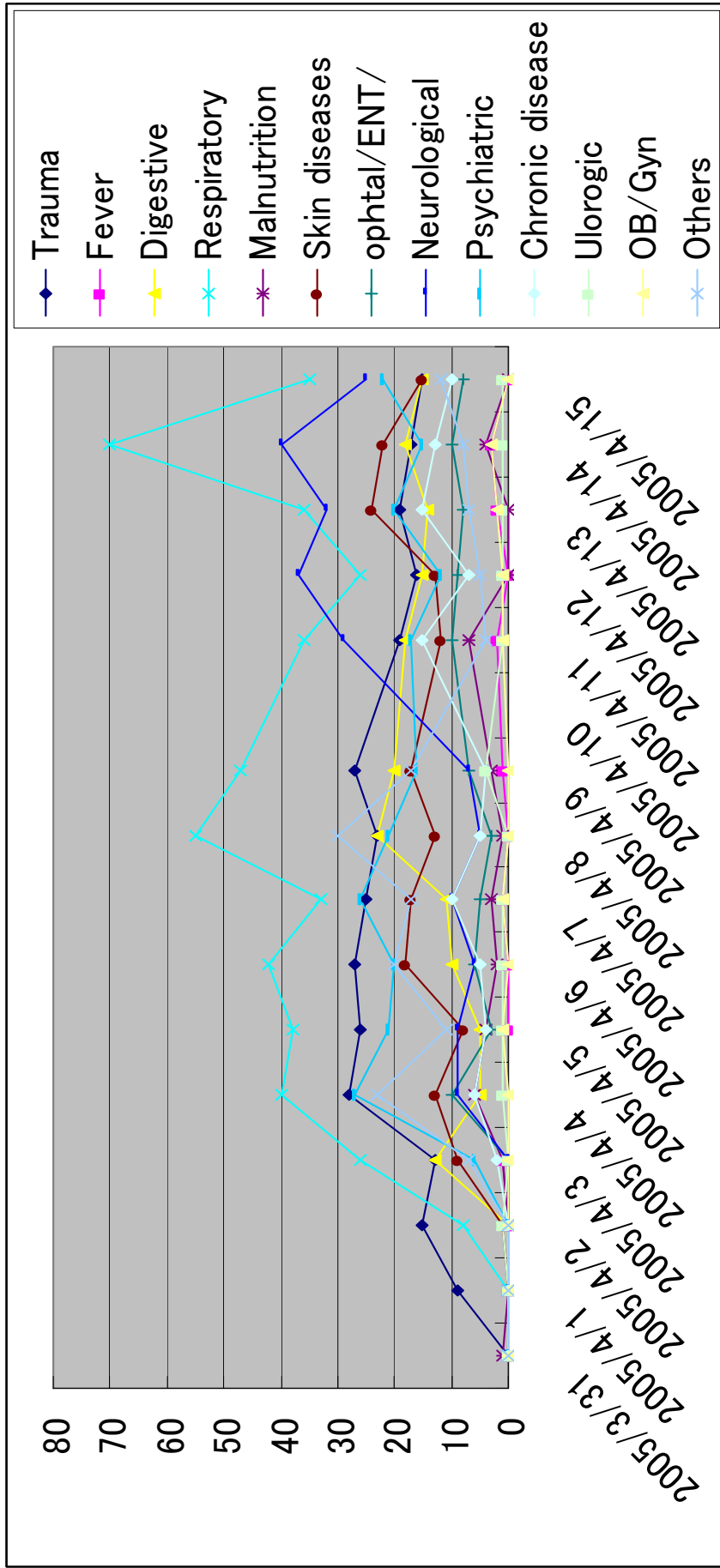


Table 4 Treatment performed

	31-Mar	1-Apr	2-Apr	3-Apr	4-Apr	5-Apr	6-Apr	7-Apr	8-Apr	9-Apr	11-Apr	12-Apr	13-Apr	14-Apr	15-Apr
1.Wound care(minor)	0	2	7	3	4	6	11	15	17	23	21	12	8	13	5
2.Wound care(deep)	0	5	4	6	9	9	12	9	4	7	5	5	6	5	4
3.Injection	0			0	1	1	1	2	0	0	2	1	7	4	6
4.Infusion	1			0	4	2	4	5	4	9	8	2	4	3	1
5.Other	0	2	14	69	150	113	129	129	154	131	135	122	155	199	142

ニアス島沖地震における被災者の移送等について

ニアス島沖地震に対する緊急援助隊医療チーム二次隊
溝江 恵子（JICA 国総研）

1. ニアス島沖地震災害における医療体制

メダンに POSKO（災害援助調整機関）があり、アチェ津波災害とニアス島沖地震に対する支援の調整を行っている。メダン POSKO の中に医療調整部（POSKO Koordinator Kesehatan, POSKO Medan）があり、そこで医薬品の送付や医療チームの派遣等、医療関係の情報を把握している。メダン POSKO 医療調整部の組織図は別添 1 のとおり。

グヌンシトリにも POSKO が設置されており、メダン POSKO 医療調整部とグヌンシトリ POSKO が医療関係の情報をやり取りしている。

2. 患者の移送について

以下については、メダン POSKO 医療調整部メディカルコーディネーターの Dr. Fadilet 氏（同部の医療サービス担当に所属）から伺った。

（1）移送体制

ニアス POSKO が、病院からの連絡等に基づき、重症患者の移送を決定する。病院医師の判断を元に、メダンに移送するか、シボルガ等の地方病院に移送するか等を決定する。

メダン POSKO 医療調整部配置された 4 名のメディカルコーディネーターが、事前にグヌンシトリ POSKO から患者数や状態等の連絡を受けて、救急車と病院を手配する。メダン空港に到着次第、メディカルコーディネーターが救急車とともに迎えに行き、患者の様子を見て最終的に移送先病院を決定する。メディカルコーディネーターは、救急車手配を担当する者、病院手配を担当する者に分かれている。

（2）移送の実際

メダンへの患者移送は、シンガポール軍機を使用して 3 月 30 日から 4 月 11 日まで実施された。3 機×3 回/日体制で、移送手段が不足することはなかった。NGO 等がチャーター機等で移送した場合でも、救急車や病院の手配はメダン POSKO 医療調整部が行うため、それらの例も含めて全て把握している。

地震から 5 日くらいはニアス島との連絡手段が限られていて、事前に患者の情報は入らなかった。飛行機が着くと、救急車を従えて迎えに行き、患者数と状態をみて病院を手配した。

グヌンシトリ POSKO と連絡が取れるようになってからは、患者の数と様子について事前に連絡が入り、病院と救急車の手配を行った。

移送先の病院の優先順位は、施設と人材が整っているので州立病院（メダン市内に 5 つ）。そこが一杯になると、私立の病院に回した。メダン市内の移送先病院は 1 2。

（3）移送患者情報の把握

メダン POSKO 医療調整部で、移送患者の氏名、病院名等を把握し、グヌンシトリ POSKO と共有していた。家族は POSKO に尋ねれば、病院がわかるようになっていた。日報（3. 参照）に添付されていたデータを参考までに添付する（別添 2）。

（4）家族の同行

移送の際、家族が同行した患者は半分以上。同行するかは家族の意思による。家族も怪我をしていたり、他の家族の世話をしなければならぬ場合もあるようで、付き添いのない患者もいた。患者と同行

家族の交通費（往復）は国が負担する。

（５）医療費

医療費は入院費など全て国が負担する。

（６）治療終了後について

メディカルコーディネーターは患者が帰島する際の飛行機の手配も行うが、まだ帰れる人は少ない。退院できても島のインフラや家が整っていない等の問題で、メダンの親戚の家などにいる人が多い。（飛行機の手配に関しては、商業便を手配するのか、船か、援助関係の飛行機に乗せてもらうのか等細かく尋ねませんでした。）

3. 日報について

POSKO メダン医療調整部では、3月30日から日報を作成しており、3/30から4/12分を入手した。データについては、人数に整合性がない、日本からの派遣に関して一次隊データが入っていなかったなど信頼性に疑問が残る。

（１）日報の内容

日報に含まれる情報は以下のとおり。

1. 行った活動

- A. 医療チームの派遣（インドネシア人、外国人含む）
- B. 医薬品の受取、送付
- C. 患者の移送
- D. 救急車の使用

2. 明日以降の活動予定

3. その他

（２）移送患者に関するデータ

移送患者数に関するデータが記録されていた。日報により患者数が異なっていたり、グヌンシトリ病院の患者数など、データの正確さに疑問を持つ部分が多い。しかしながら、傾向程度であれば把握できるかもしれないと思い、日報から数を拾ったものを作成した（別添3）。日報により数が異なっていたため、4/10と4/12の日報から数を拾った。

（３）その他

メダン空港における救急車の待機状況が記されていたので、以下に記す。

3/30 メダン空港に5台の救急車が24時間待機
3/31～4/1 同 15台
4/2～10 同 25台
4/11～12 同 9台

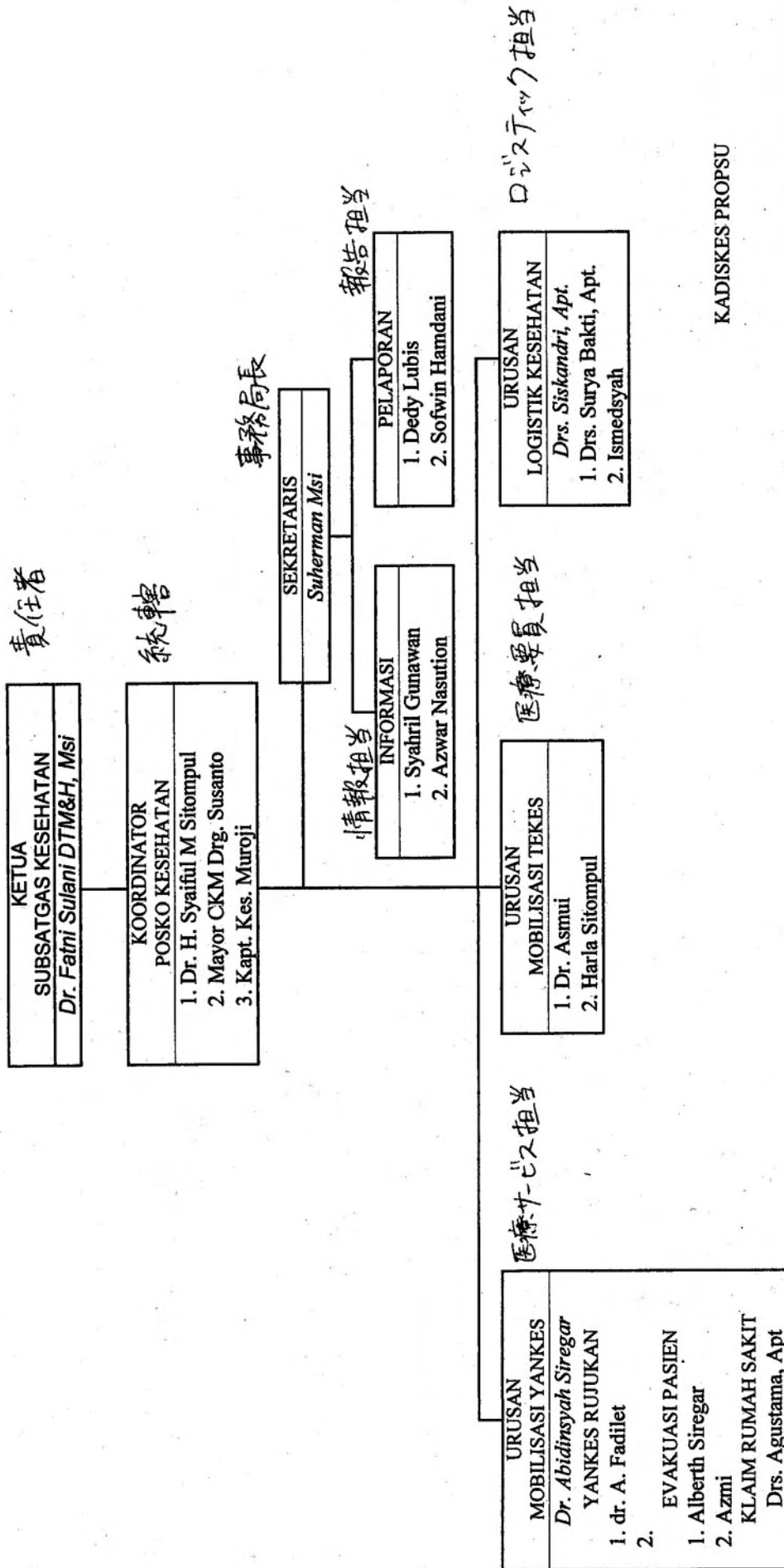
以上

別添1：メダン POSKO 医療調整部組織図

別添2：移送患者データ（例）

別添3：移送患者数

STRUKTUR ORGANISASI
 BADAN PENANGGULANGAN BENCANA NIAS
 SUB SATUAN TUGAS KESEHATAN



責任者

統轄

事務局長

情報担当

報告担当

医療サービス担当

医療要員担当

ロジスティック担当

KADISKES PROPSU

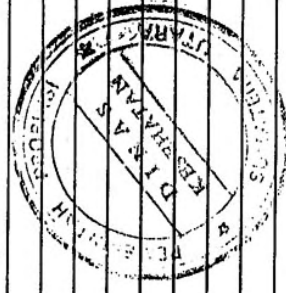
Dr. Hj. FATNI SULANI DTM &H, Msi

別添1

DAFTAR PASIEN EVAKUASI DARI POSK LANUD
TANGGAL 4 APRIL 2005 (S.D JAM 15.00 WIB)

年齡 小兒 住所 移送先病院 避難時間(先病院に到着)

NO	NAMA	UMUR	L/P	ALAMAT	RS. EVAKUASI	JAM EVAKUASI
1	PDT PAUL EMERSON ZAI	30 TAHUN	P	DS. HALINAA HATAPUE KEC. IDANO	RS ADVENT	12.10
2	IMIS PAN	60 TAHUN	L	DS BOYO G. SITOLI	RS TEMBAKAU DELI	12.10
3	TEZA TULEN	60 TAHUN	L	DS KARET G. SITOLI	RS TEMBAKAU DELI	12.10
4	FANALO GULO	49 TAHUN	L	JL DIPENEGORO G. SITOLI	RS HAJI	12.10
5	NEBI ZAI	10 TAHUN	P	G. SITOLI	RS ADAM MALIK	15.40
6	FARE SIBOWO GEA	60 TAHUN	L	DANO GAWO	RS ADAM MALIK	15.40
7	RESILIA HULU	52 TAHUN	P	LASARA KEC. GIDO	RS ADAM MALIK	15.40
8	ADIFATI HIA	30 TAHUN	P	SISARAHILI SUSUA KEC LAHUSA	RS ADAM MALIK	15.40
9	ATIMUSA GEA	38 TAHUN	P	MALIWAN DANO GAWO	RS ADAM MALIK	15.40
10	MUKTIARLE	67 TAHUN	L	G. SITOLI	RS ADAM MALIK	15.40
11	OKTAVIANUS	5 BULAN	P	MALIWA KEC DANO GAWO	RS ADAM MALIK	15.40
12	NOVERI GULO	13 TAHUN	P	MALIWA KEC DANO GAWO	RS ADAM MALIK	15.40
13	NOFEDI WARUWU	35 TAHUN	L	MALIWA KEC DANO GAWO	RS ADAM MALIK	15.40
14	FADEDE GOURI	72 TAHUN	L	MALIWA KEC DANO GAWO	RS ADAM MALIK	15.40
15						
16						
17						
18						
19						
20						
21						
22						
23						
24						
25						
26						
27						
28						
29						
30						
31						
32						
33						
34						
35						
36						
37						
38						



別添2

ニアス島沖地震の移送患者数（メダンPOSK0医療調整部作成の日報より）

メダン	3/29	3/30	3/31	4/1	4/2	4/3	4/4	4/5	4/6	4/7	4/8	4/9	4/10	4/11	4/12
1)H. ADAM MALIK病院	0	13	42	18	0	0	10	7	1	3	0	0	0	1	0
2)Dr. PRINGADI病院	0	20	10	16	1	0	0	0	0	0	0	2	0	0	0
3)HAJI病院	0	1	0	10	3	0	1	0	0	0	0	1	0	0	0
4)PUTRI HI JAU病院	0	0	15	2	5	0	0	0	0	0	0	0	0	0	0
5)BAYANGKARA病院	0	0	7	0	4	0	0	0	0	0	0	0	0	0	0
6)EL ISABETH病院	0	5	13	0	15	0	0	0	0	0	0	0	0	0	0
7)GLEN EAGLES病院	0	1	0	3	0	0	0	0	0	0	0	0	0	0	0
8)TEMLAKU DELI病院	0	0	0	0	0	13	3	13	0	0	0	0	0	0	0
9)HERNA病院	0	1	0	1	15	1	0	0	0	0	1	0	0	0	0
10)ADVEN病院	0	0	0	0	0	0	1	0	5	0	0	0	0	0	0
11)DELI病院	0	0	0	0	7	0	3	3	0	0	0	0	0	0	0
12)Abd. MALIK TNI-AU病院	0	0	0	0	0	0	0	0	0	0	0	2	0	0	0
小計	0	41	87	50	50	14	18	23	6	3	1	5	0	1	0
地方病院															
1)FL. TOBING SIBOLGA病院	14	23	11	17	57	11	3	4	1	2	0	2	0	2	2
2)PANDAN TAPTENG病院	7	31	2	1	21	0	0	0	0	0	0	0	0	0	3
3)GUNUNG SITOLI病院	0*	0*	0*	0*	0	0	0	0	112	136	138	139	0	0	0
4)HILISIMETANO病院	0	0	0	0	0	0	0	0	0	0	0	0	0	0	0
小計	21	54	13	18	78	11	3	4	113	138	138	141	0	2	5
ジャカルタへ移送	0	0	0	0	0	1	0	0	0	0	0	0	0	0	0
合計	21	95	100	68	128	26	21	27	119	141	139	146	0	3	5

*4/3の日報では、3/29が50名、3/30が27名、3/31が48名、4/1が117名となっているが、4/10の日報ではいずれも0名。

メダンの病院のうち1)から5)までが州立病院

JAPAN INTERNATIONAL COOPERATION AGENCY
Maynds Tower, Yoyogi 2-1-1, Shibuya-ku, Tokyo, Japan
INVOICE

Consigned to The Japanese Embassy in IndoneNo:
 Date:
 Shipped per AIR CRAFT.....
 TEL : FAX :

Shipping Mark: JAPAN MEDICAL TEAM
FOR
DISASTER RELIEF

from TOKYO, JAPAN
 to Jakarta, Indonesia
 via
 on 30th, Mar, 2005.....

JICA

Case No.	C/Nos.	Description of Goods	Carton	Price(yen)	Amount	Weight (kg)	Measurement (cm)			Volume (m ³)		
1	G0101	Medicine	1	948,398	948,398	42	35	×	41	×	87	0.12
2	G0102	Medicine	1	888,436	888,436	41	35	×	41	×	87	0.12
3	G0103	Medicine	1	1,847,220	1,847,220	37	32	×	50	×	90	0.14
4	G0104	Medicine	1	351,790	351,790	37	32	×	50	×	90	0.14
5	G0105	Medicine	1	266,830	266,830	43	32	×	50	×	90	0.14
6	G0106	Medicine	1	227,540	227,540	51	32	×	50	×	90	0.14
7	G0107	Medicine	1	234,010	234,010	52	32	×	50	×	90	0.14
8	R0101	Medical equipment	1	736,807	736,807	50	32	×	49	×	88	0.14
9	R0102	Medical equipment	1	449,765	449,765	36	32	×	49	×	88	0.14
10	R0103	Medical equipment	1	371,090	371,090	38	32	×	49	×	88	0.14
11	R0104	Medical equipment	1	539,803	539,803	39	32	×	49	×	88	0.14
12	R0105	Medical equipment	1	744,056	744,056	39	32	×	49	×	88	0.14
13	R0106	Medical equipment	1	325,701	325,701	28	34	×	52	×	90	0.16
14	R0107	Medical equipment	1	266,615	266,615	23	34	×	52	×	90	0.16
15	R0108	Medical equipment	1	342,023	342,023	30	34	×	52	×	90	0.16
16	R0109	Medical equipment	1	277,597	277,597	23	34	×	52	×	90	0.16
17	R0110	Medical equipment	1	337,594	337,594	29	34	×	52	×	90	0.16
18	R0111	Medical equipment	1	265,685	265,685	24	34	×	52	×	90	0.16
19	R0112	Medical equipment	1	318,053	318,053	41	34	×	52	×	90	0.16
20	D0201	Medical equipment	1	190,880	190,880	14	30	×	40	×	35	0.04
21	D0102	Medical equipment	1	185,032	185,032	14	30	×	40	×	35	0.04
22	S0201	Medical equipment	1	207,423	207,423	11	30	×	40	×	35	0.04
23	Y0401	daily necessities	1	320,690	320,690	49	34	×	52	×	88	0.16
24	Y0402	daily necessities	1	365,110	365,110	32	34	×	52	×	88	0.16
25	Y0403	daily necessities	1	331,010	331,010	37	34	×	52	×	88	0.16
26	Y0404	daily necessities	1	225,000	225,000	44	34	×	52	×	88	0.16
27	B5356	Tent	1	85,500	85,500	27	34	×	95	×	34	0.11
28	B5357	Tent	1	85,500	85,500	27	34	×	95	×	34	0.11
29	B5358	Tent	1	85,500	85,500	27	34	×	95	×	34	0.11
30	B5359	Tent	1	85,500	85,500	27	34	×	95	×	34	0.11
31	B5360	Tent	1	85,500	85,500	27	34	×	95	×	34	0.11
32	B5361	Tent	1	85,500	85,500	27	34	×	95	×	34	0.11
33	B5362	Tent	1	85,500	85,500	27	34	×	95	×	34	0.11
34	B5363	Tent	1	85,500	85,500	27	34	×	95	×	34	0.11
35	B5364	Tent	1	85,500	85,500	27	34	×	95	×	34	0.11
36	B5365	Tent	1	85,500	85,500	27	34	×	95	×	34	0.11
37	B5366	Tent	1	85,500	85,500	27	34	×	95	×	34	0.11
38	B5367	Tent	1	85,500	85,500	27	34	×	95	×	34	0.11
39	B5368	Tent	1	85,500	85,500	27	34	×	95	×	34	0.11
40	B5369	Tent	1	85,500	85,500	27	34	×	95	×	34	0.11
41	B0710	Tent	1	64,000	64,000	10	23	×	70	×	23	0.04
42	B0714	Tent	1	86,400	86,400	10	23	×	70	×	23	0.04
43	B0715	Tent	1	57,600	57,600	10	23	×	70	×	23	0.04
44	B1108	Toilet	1	115,000	115,000	12	65	×	50	×	61	0.20
45	B1106	Toilet	1	115,000	115,000	12	65	×	50	×	61	0.20
46	B1153	Bed sheet	1	34,500	34,500	7	55	×	60	×	33	0.11
47	B1208	Bed	1	37,000	37,000	13	95	×	20	×	20	0.04
48	B1214	Bed	1	55,500	55,500	13	95	×	20	×	20	0.04

JAPAN INTERNATIONAL COOPERATION AGENCY
Maynds Tower, Yoyogi 2-1-1, Shibuya-ku, Tokyo, Japan
INVOICE

Case No.	C/Nos.	Description of Goods	Carton	Price(yen)	Amount	Weight(kg)	Measurement(cm)			Volume(m ³)		
49	B1215	Bed	1	55,500	55,500	13	95	×	20	×	20	0.04
50	B1216	Bed	1	55,500	55,500	13	95	×	20	×	20	0.04
51	B1261	Bed	1	32,400	32,400	13	95	×	20	×	20	0.04
52	B5309	Bed	1	32,400	32,400	13	95	×	20	×	20	0.04
53	B5311	Bed	1	32,400	32,400	13	95	×	20	×	20	0.04
54	B5313	Bed	1	32,400	32,400	13	95	×	20	×	20	0.04
55	B5314	Bed	1	32,400	32,400	13	95	×	20	×	20	0.04
56	B5315	Bed	1	32,400	32,400	13	95	×	20	×	20	0.04
57	B5316	Bed	1	32,400	32,400	13	95	×	20	×	20	0.04
58	B5317	Bed	1	32,400	32,400	13	95	×	20	×	20	0.04
59	B5318	Bed	1	32,400	32,400	13	95	×	20	×	20	0.04
60	B5319	Bed	1	32,400	32,400	13	95	×	20	×	20	0.04
61	B5320	Bed	1	32,400	32,400	13	95	×	20	×	20	0.04
62	B5321	Bed	1	32,400	32,400	13	95	×	20	×	20	0.04
63	B5322	Bed	1	32,400	32,400	13	95	×	20	×	20	0.04
64	B5323	Bed	1	32,400	32,400	13	95	×	20	×	20	0.04
65	B5324	Bed	1	21,600	21,600	13	95	×	20	×	20	0.04
66	B1230	Bed	1	23,400	23,400	16	100	×	28	×	16	0.04
67	B1231	Bed	1	23,400	23,400	16	100	×	28	×	16	0.04
68	B1232	Bed	1	23,400	23,400	16	100	×	28	×	16	0.04
69	B1233	Bed	1	23,400	23,400	16	100	×	28	×	16	0.04
70	B1234	Bed	1	23,400	23,400	16	100	×	28	×	16	0.04
71	B1235	Bed	1	23,400	23,400	16	100	×	28	×	16	0.04
72	B1236	Bed	1	23,400	23,400	16	100	×	28	×	16	0.04
73	B1237	Bed	1	23,400	23,400	16	100	×	28	×	16	0.04
74	B1238	Bed	1	23,400	23,400	16	100	×	28	×	16	0.04
75	B1239	Bed	1	23,400	23,400	16	100	×	28	×	16	0.04
76	B1240	Bed	1	23,400	23,400	16	100	×	28	×	16	0.04
77	B1241	Bed	1	23,400	23,400	16	100	×	28	×	16	0.04
78	B1242	Bed	1	23,400	23,400	16	100	×	28	×	16	0.04
79	B1243	Bed	1	23,400	23,400	16	100	×	28	×	16	0.04
80	B1313	Table	1	3,450	3,450	18	80	×	24	×	62	0.12
81	B1314	Table	1	3,450	3,450	12	79	×	16	×	63	0.08
82	B5247	Table	1	3,240	3,240	18	80	×	24	×	62	0.12
83	B5248	Table	1	3,240	3,240	18	80	×	24	×	62	0.12
84	B5347	Table	1	3,240	3,240	18	80	×	24	×	62	0.12
85	B5348	Table	1	3,240	3,240	18	80	×	24	×	62	0.12
86	B5236	Chair	1	2,880	2,880	15	39	×	40	×	85	0.13
87	B5243	Chair	1	2,880	2,880	15	39	×	40	×	85	0.13
88	B5245	Chair	1	2,880	2,880	15	39	×	40	×	85	0.13
89	B5246	Chair	1	2,880	2,880	15	39	×	40	×	85	0.13
90	B5336	Chair	1	2,880	2,880	15	39	×	40	×	85	0.13
91	B5346	Chair	1	2,880	2,880	15	39	×	40	×	85	0.13
92	B4311	Generator	1	189,000	189,000	24	53	×	32	×	50	0.08
93	B5232	Vinyl sheet	1	4,760	4,760	32	51	×	65	×	21	0.07
94	B5233	Vinyl sheet	1	4,760	4,760	32	51	×	65	×	21	0.07
95	B3801	Water purfier	1	310,000	310,000	34	58	×	37	×	61	0.13
96	B3900	Battery cell	1	3,240	3,240	7	39	×	40	×	85	0.13
97	B3901	Battery cell	1	3,240	3,240	10	39	×	40	×	85	0.13
98	B3902	Battery cell	1	2,880	2,880	3	53	×	32	×	50	0.08
99	B3903	Battery cell	1	2,880	2,880	3	51	×	65	×	40	0.13
100	B3910	Vitamin tablet	1	4,730	4,730	11	35	×	45	×	55	0.09
101	Z0346-1	Raincoat	1	56,800	56,800	8	45	×	35	×	55	0.09
102	Z0346-2	Raincoat	1	6,450	6,450	7	30	×	25	×	35	0.03
103	B7792	Rainshoes	1	28,800	28,800	7	30	×	25	×	35	0.03
104	A5104	Portable tank	1	33,160	33,160	4	45	×	33	×	31	0.05
105	A5105	Portable tank	1	33,160	33,160	4	45	×	33	×	31	0.05
106	A1607	Electric code reel	1	43,500	43,500	26	70	×	34	×	40	0.10

JAPAN INTERNATIONAL COOPERATION AGENCY
Maynds Tower, Yoyogi 2-1-1, Shibuya-ku, Tokyo, Japan
INVOICE

Case No.	C/Nos.	Description of Goods	Carton	Price(yen)	Amount	Weight (kg)	Measurement (cm)			Volume (m ³)		
107	A5206	blanket	1	68,000	68,000	17	52	×	72	×	56	0.21
108	B0101 (1/6)	Large size Tent Main Body	1	4,600,000	4,600,000	135	150	×	105	×	60	0.95
109	B0101 (2/6)	Large size extension unit	1	↑	↑	60	105	×	100	×	40	0.42
110	B0101 (3/6)	Large size extension unit	1	↑	↑	60	105	×	100	×	40	0.42
111	B0101 (4/6)	Large size Tent Partition unit	1	↑	↑	60	105	×	100	×	40	0.42
112	B0101 (5/6)	Large size Tent Partition unit	1	↑	↑	60	105	×	100	×	40	0.42
113	B0150	Large size Tent Partition unit	1	↑	↑	60	105	×	100	×	40	0.42
114	B0101 (6/6)	Large size Tent attachment	1	↑	↑	11	113	×	35	×	29	0.11
115	A2014 (1/2)	Flood light	1	207,400	207,400	41	36	×	50	×	73	0.13
116	A2014 (2/2)	Flood light tripod	1	↑	↑	6	26	×	130	×	21	0.07
117	A2015 (1/2)	Flood light	1	207,400	207,400	41	36	×	50	×	73	0.13
118	A2015 (2/2)	Flood light tripod	1	↑	↑	6	26	×	130	×	21	0.07
119	B5202	kitchen equipment	1	38,990	38,990	18	64	×	50	×	60	0.19
120	B3904	kitchen equipment	1	28,700	28,700	18	64	×	50	×	60	0.19
121	B3905	kitchen equipment	1	19,600	19,600	15	64	×	50	×	60	0.19
122	B3906	kitchen equipment	1	23,700	23,700	18	64	×	50	×	60	0.19
123	B3907	kitchen equipment	1	12,900	12,900	15	64	×	50	×	60	0.19
124	B3908	kitchen equipment	1	17,600	17,600	18	64	×	50	×	60	0.19
125	B3909	kitchen equipment	1	14,500	14,500	15	64	×	50	×	60	0.19
126	B5205	commodities	1	162,000	162,000	17	50	×	64	×	27	0.09
127	B5325	Sleeping bag	1	151,200	151,200	11	42	×	61	×	39	0.10
128	B5227	Sleeping bag	1	151,200	151,200	11	42	×	61	×	39	0.10
129	B4340	commodities	1	133,000	133,000	11	32	×	49	×	42	0.07
130	B4341	commodities	1	152,000	152,000	13	36	×	75	×	36	0.10
131	B4342	commodities	1	190,000	190,000	17	43	×	62	×	37	0.10
132	B4343	commodities	1	114,000	114,000	10	39	×	57	×	36	0.08
133	B4344	commodities	1	133,000	133,000	12	38	×	54	×	38	0.08
134	B4345	commodities	1	114,000	114,000	10	39	×	55	×	37	0.08
135	B4346	commodities	1	114,000	114,000	10	44	×	54	×	31	0.07
136	B4347	commodities	1	114,000	114,000	10	45	×	53	×	31	0.07
137	B4348	commodities	1	114,000	114,000	10	39	×	55	×	38	0.08
138	B4349	commodities	1	190,000	190,000	16	39	×	58	×	38	0.09
139	I0001	Food	1	14,800	14,800	11	42	×	61	×	39	0.10
140	I0002	Food	1	27,400	27,400	11	32	×	49	×	42	0.07
141	I0003	Food	1	12,150	12,150	13	36	×	75	×	36	0.10
142	I0004	Food	1	19,800	19,800	17	43	×	62	×	37	0.10
143	I0005	Food	1	17,360	17,360	10	39	×	57	×	36	0.08
144	I0006	Food	1	14,800	14,800	12	38	×	54	×	38	0.08
145	I0007	Food	1	19,200	19,200	10	39	×	55	×	37	0.08
146	I0008	Food	1	14,790	14,790	10	44	×	54	×	31	0.07
147	I0009	Food	1	23,100	23,100	10	45	×	53	×	31	0.07
148	I0010	Food	1	11,870	11,870	10	39	×	55	×	38	0.08
149	I0011	Food	1	24,100	24,100	16	39	×	58	×	38	0.09

	Total Carton	Total Amount (¥)	Total Weight (kg)	Total Mesurement (M3)	↑ m3
	149	22,275,018	3,180	17	16.88

Notes: All equipment are not against the Washington Treaty

資料4 携行資機材リスト(2次隊第1陣分)

Packing List 6th, Apr, 2005			
JAPAN INTERNATIONAL COOPERATION AGENCY			
	機材名	Quantity	Carton
1	食料品セット		1
1-1	シーチキン	24	
1-2	さんま	30	
1-3	イカ里芋	48	
1-4	イカ味付け	24	
1-5	玉子粥	24	
1-6	梅粥	16	
1-7	鮭粥	56	
1-8	ふりかけ	200	
1-9	ひるげ	30	
1-10	ゆうげ	30	
1-11	どん兵衛	24	
1-12	穴あきオイフ	25	
1-13	穴あきオイフ	10	
2	食料品セット		1
2-1	どん兵衛	72	
2-2	減塩味噌汁	60	
2-3	あさげ	30	
2-4	ふりかけ	200	
2-5	シーチキン	24	
3	缶詰セット	1	1
3-1	ソーセージ；缶詰	27	
3-2	焼き鳥；たれ/缶詰	51	
3-3	サンマ；缶詰	27	
3-4	サバ味噌煮/鮭水煮；缶詰	27	
3-5	牛肉煮込み；缶詰	27	
4	アルファ米	190	1
5	アルファ米	50	1
6	アルファ米	50	1
7	アルファ米	50	1

Packing List 9th, Apr, 2005

JAPAN INTERNATIONAL COOPERATION AGENCY

	機材名	数量	Carton	重量
1	レトルト食品		1	36kg
1-1	カロリーメイト	100		
1-2	レトルト食品	90		
1-3	虫除けスプレー	28		
2	缶詰 ; おかず	72	1	28kg
3	ポカリスエット	200	1	19kg
4	缶みかん	24	1	10kg
5	ナビスコリッツ缶入り	6	1	5kg
6	食品・生活資機材		1	21kg
6-1	レトルト食品	30		
6-2	ステップダウントランスフォーマー	1		
6-3	ビニール袋	100		
6-4	診察券	1000		
7	医療資機材 ; アルミトランク1		1	
7-1	ゲンタシン軟膏	10		
7-2	リンデロンV G軟膏	10		
7-3	サルタノール吸入薬	5		
7-4	アダラート	400		
7-5	ロキソニン	300		
7-6	タリビット点眼	20		
7-7	アセトアミノフェン	1000		
7-8	パテックス	132		
7-9	プラビタン点眼 ; 5ml	50		
7-10	ウェルパス ; 1L	2		
7-11	ビオフェルミン	1000		
7-12	ポララミンシロップ	2		
7-13	カロナールシロップ	2		
7-14	イソジン液 ; 250ml	2		
7-15	ヒビテン	2		

資料4 携行資機材リスト（2次隊第2陣分）

	機材名	数量	Carton	重量	
7-16	リバガーゼ	2		35kg	
7-17	綿棒	660			
7-18	カットバン	100			
7-19	ワンショット	600			
7-20	綿球	1			
7-21	ニチバン	5			
7-22	エラストポア	5			
7-23	タオル	30			
7-24	ユニパック	2000			
7-25	穴あきオイフ	30			
7-26	軟膏つぼ（5g）	100			
7-27	針捨て	3			
7-28	無鉤セッシ；11.5cm	2			
7-29	無鉤セッシ；13cm	2			
7-30	無鉤セッシ；15cm	2			
7-31	剪刀；両尖・直	5			
7-32	剪刀；両尖・反	5			
7-33	デウエル；骨鋭匙No.1	1			
8	医療資機材；アルミトランク2		1		22kg
8-1	ウェットティッシュ	5			
8-2	ティッシュペーパー	10			
8-3	オイフ；穴なし	100			
8-4	オイフ；穴開	30			
9	事務用品		1	32Kg	
9-1	カルテ	500			
9-2	T-シャツ	5			
9-3	紙ファイル	10			
9-4	ファイルボックス	3			
9-5	パイプファイル	2			
9-6	ファイルケース	4			
9-7	ベスト	3			
9-8	そうめん	1			

TOTAL 208Kg