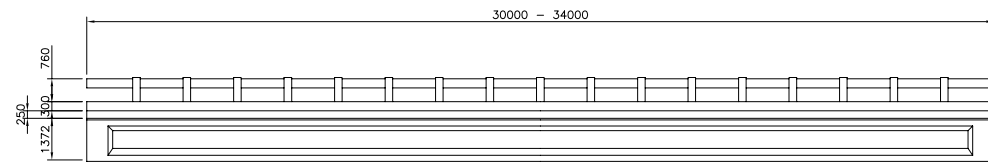
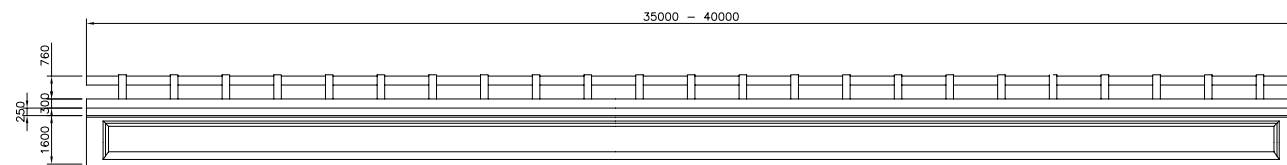


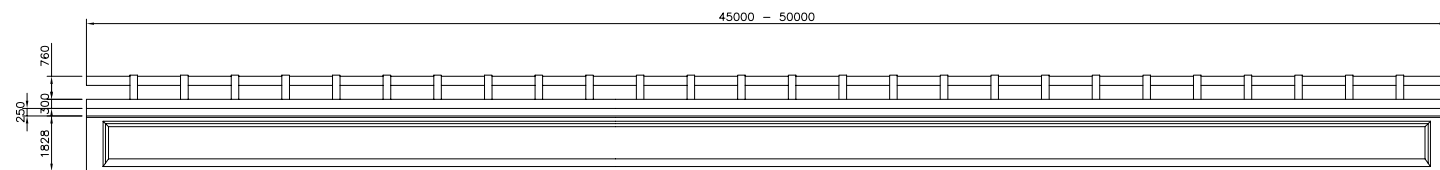
L = 20.0 m to 25.0 m
AASHTO Type III



L = 30.0 m to 34.0 m
AASHTO Type IV

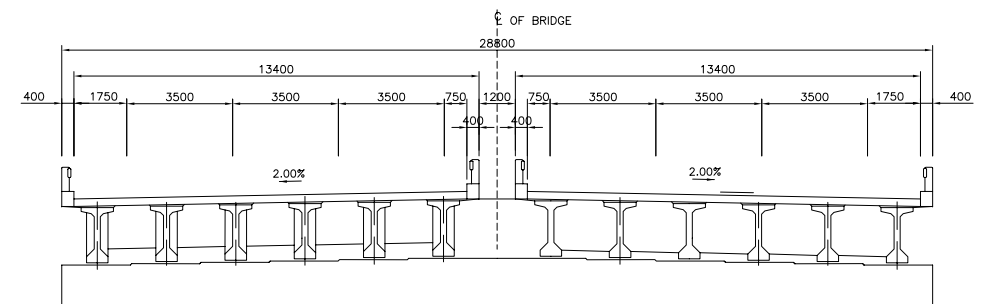
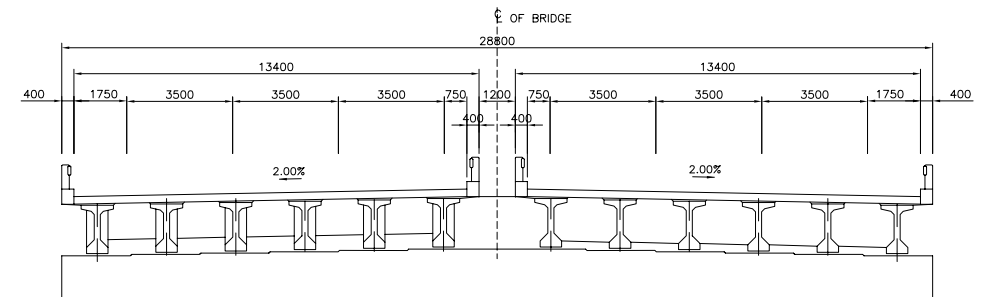
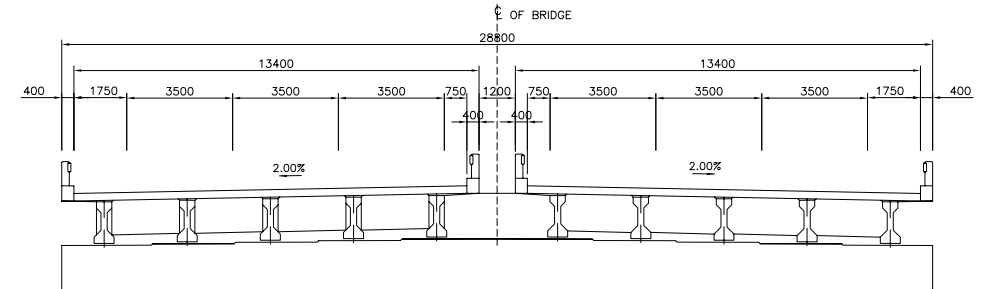
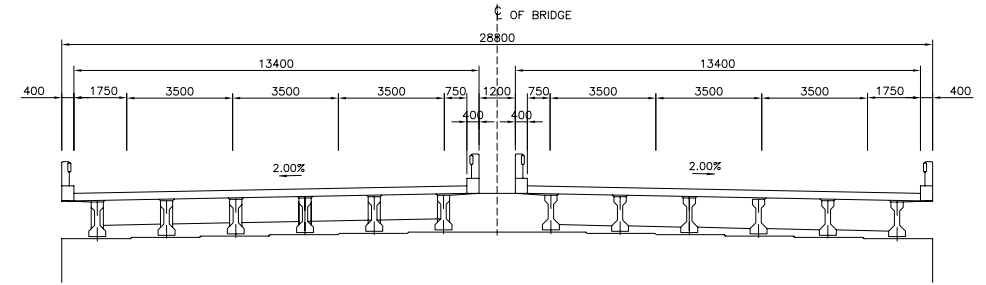


L = 35.0 m to 40.0 m
AASHTO Type V



L = 45.0 m to 50.0 m
AASHTO Type VI

(A) SIDE VIEW
SCALE 1:125



(B) CROSS SECTION
SCALE 1:125

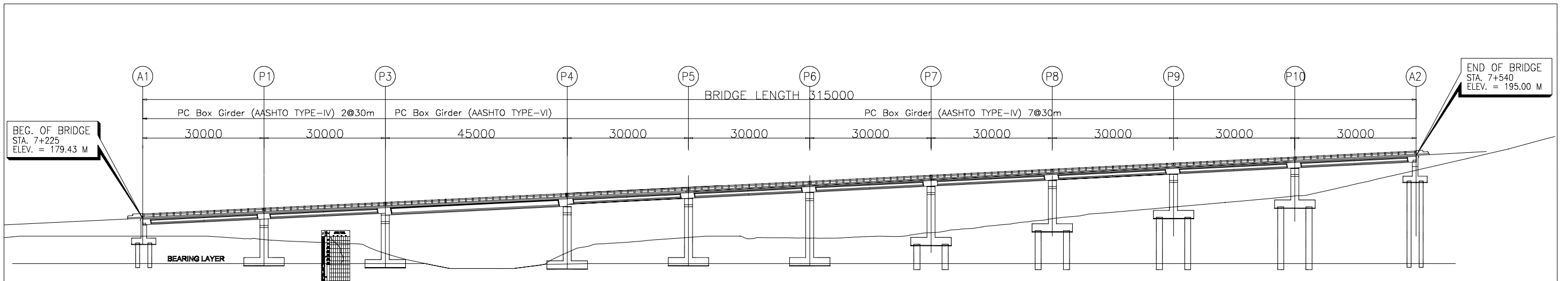
Road No.	Structure ID.	Station No.		Bridge Length (m)	Span Arrangement (m)	Type of Superstructure	Remarks
		Start	End				
CE-1	CEB-1	3+360	4+970	1610	40+26@25+3525@25+4@35+4@30	PCHS, PCDG	Brittani Subdivision Viaduct, Sta.Rosa-Tagaytay Rd. Flyover
CE-2	CEB-2	5+320	5+360	0	40	PCDG	Creek
	CEB-3	6+700	6+760	0	2@30	PCDG	Creek
	CEB-4	7+225	7+540	0	2@30+45+7@30	PCDG	Creek
	CEB-5	7+785	7+925	0	35+70+35	PCBG	Creek
	CEB-6	7+970	7+250	0	8@35	PCDG	Creek
	CEB-7	8+600	8+728	0	4@32	PCDG	Creek
	CEB-8	9+035	9+130	0	30+35+30	PCDG	Creek
	CEB-9	9+145	9+385	0	3@35+45+3@30	PCDG	Creek
	CEB-10	10+455	10+500	0	45	PCDG	Creek
	CEB-11	10+610	10+730	0	4@30	PCDG	Creek
	CEB-12	12+850	12+925	0	30+45	PCDG	Creek
	CEB-13	13+733	13+778	0	45	PCDG	Creek
	CEB-14	14+050	14+547	0	4@30+3@35+2@43+2@33+4@30	PCDG	Aguinaldo Hwy. Flyover, River
	CE-3	CEB-15	14+787	15+117	0	11@30	PCDG
CEB-16		16+405	16+555	0	5@30	PCDG	Creek
CE-4	CEB-17	18+710	18+870	0	4@40	PCDG	Creek

(A) Schedule for Bridge

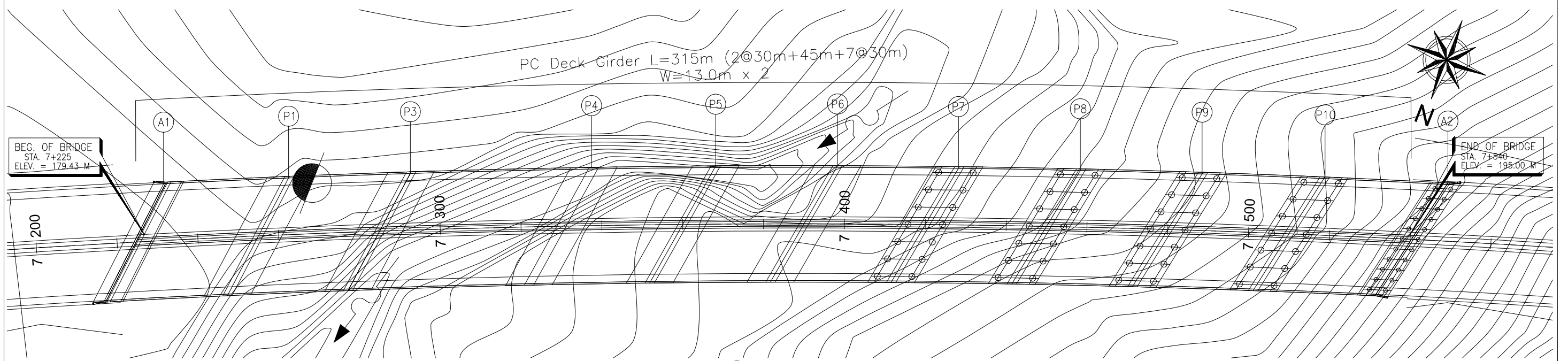
Road No.	Structure ID.	Station No.	Type of Structure	Size of Structure (m)	Remarks
NS-1	NM-1	1+240	RCBC	4x4	Underpass
NS-3	NM-2	12+210	RCBC	3x3 2-Cell	Waterway
	NM-3	12+680	RCBC	3x3 2-Cell	Waterway
NS-4	NM-4	13+195	RCBC	4.5x2.75	Waterway
	NM-5	13+750	RCBC	5x5 2-Cell	Waterway
NS-5	NM-6	22+830	RCBC	3x3 2-Cell	Waterway

(B) Schedule for Minor Structures

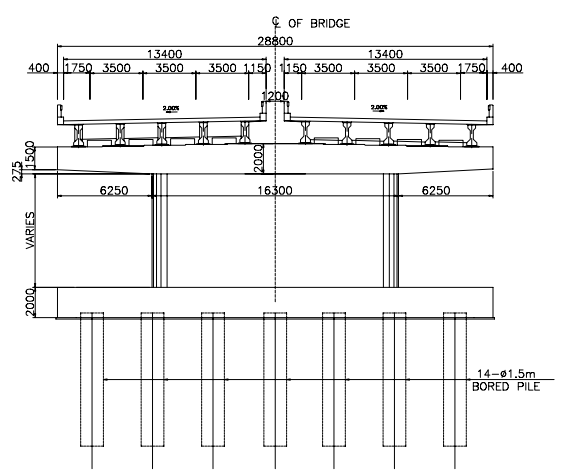
PCDG : Pre-stressed Concrete Deck Girder
PCHS : Pre-stressed Concrete Hollow Slab
PCBG : Pre-stressed Concrete Box Girder
RCBC : Reinforced Concrete Box Culvert



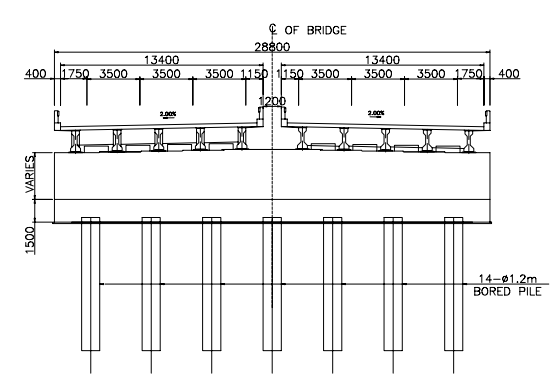
A PROFILE
CB-3 SCALE 1:500



B PLAN
CB-3 SCALE 1:500

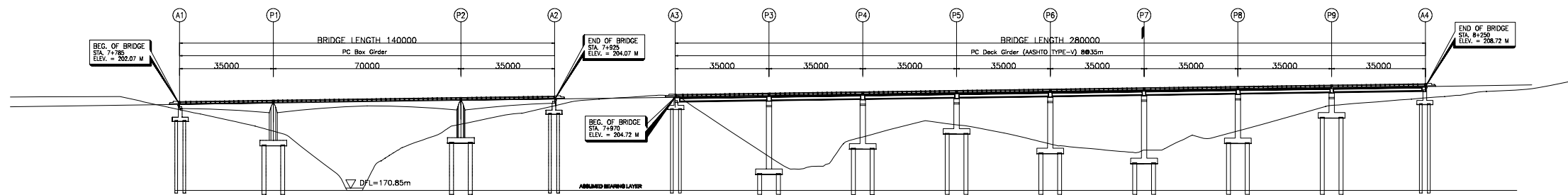


C SECTION @ PIER P1 & P2
CB-3 SCALE 1:200

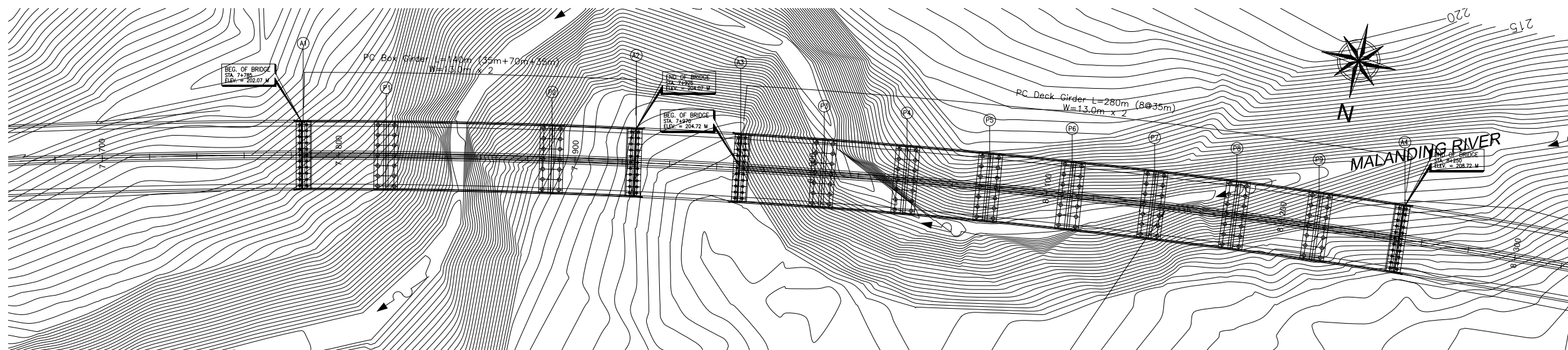


D SECTION @ ABUT A1 & A2
CB-3 SCALE 1:200

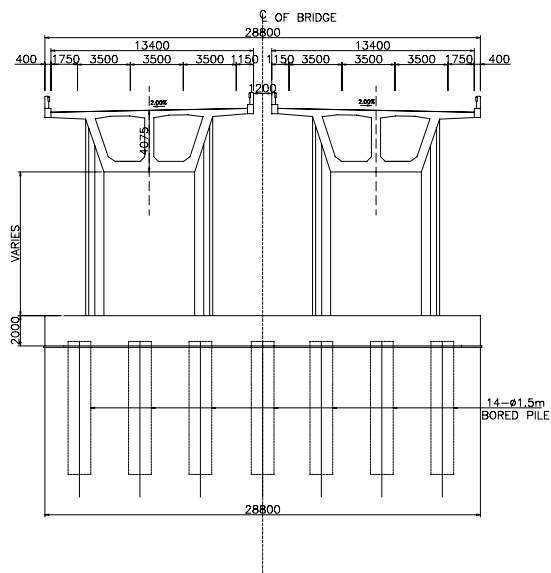
REMARKS:



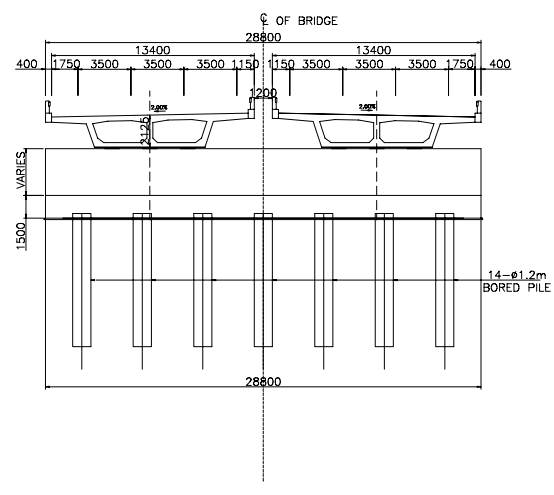
A PROFILE
CB-4 SCALE 1:1000



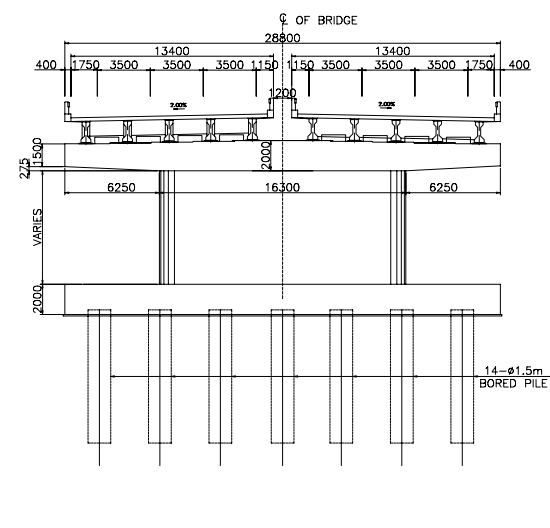
B PLAN
CB-4 SCALE 1:1000



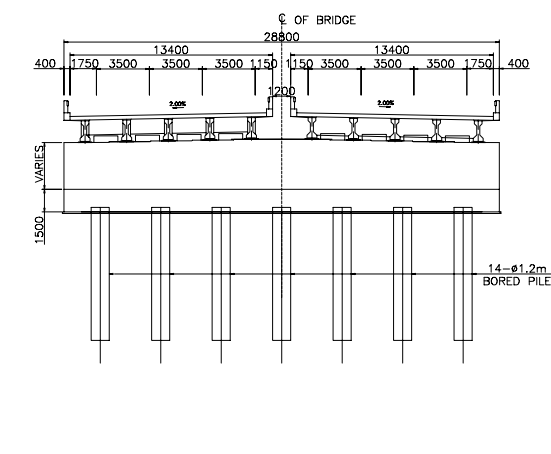
C SECTION @ PIER P1 & P2
CB-4 SCALE 1:200



D SECTION @ ABUT A1 & A2
CB-4 SCALE 1:200



E SECTION @ PIER P3 - P9
CB-4 SCALE 1:200



F SECTION @ ABUT A3 & A4
CB-4 SCALE 1:200

REMARKS:

JICA JAPAN INTERNATIONAL COOPERATION AGENCY

ALMEC ALMEC CORPORATION

DEPARTMENT OF PUBLIC WORKS AND HIGHWAYS

NIPPON KOEI CO., LTD.

THE FEASIBILITY STUDY AND IMPLEMENTATION SUPPORT
ON THE CALA EAST-WEST NATIONAL ROAD PROJECT

DRAWING TITLE
CALA Expressway
General Plan and Sections of Bridge CEB-5 & CEB-6

SCALE	As Shown
DRAWING NO.	CB-4
SHEET NO.	