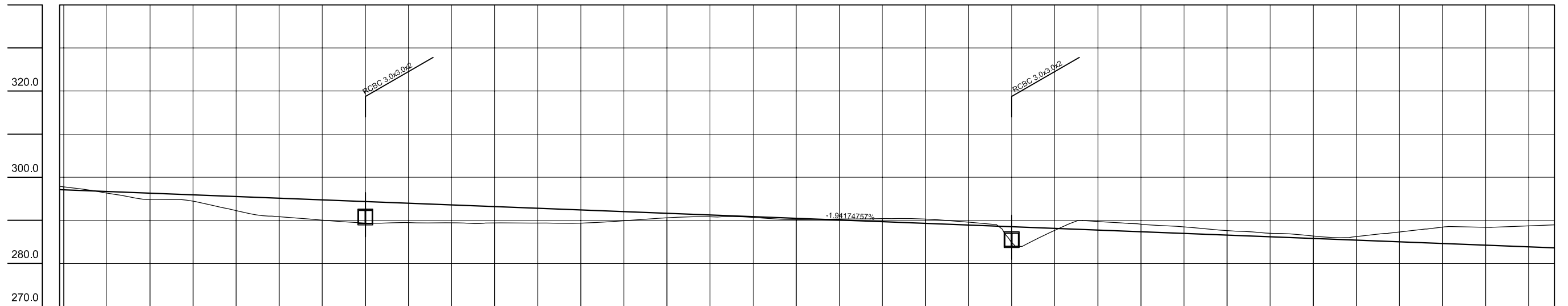
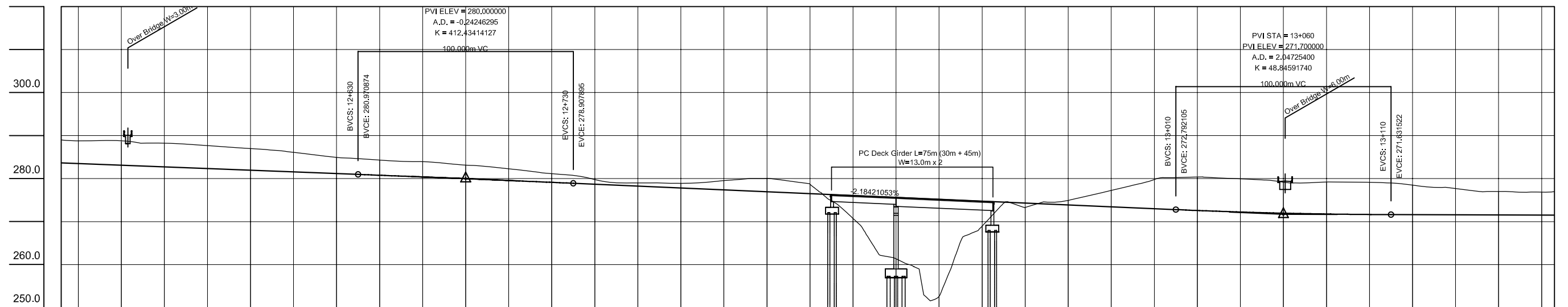
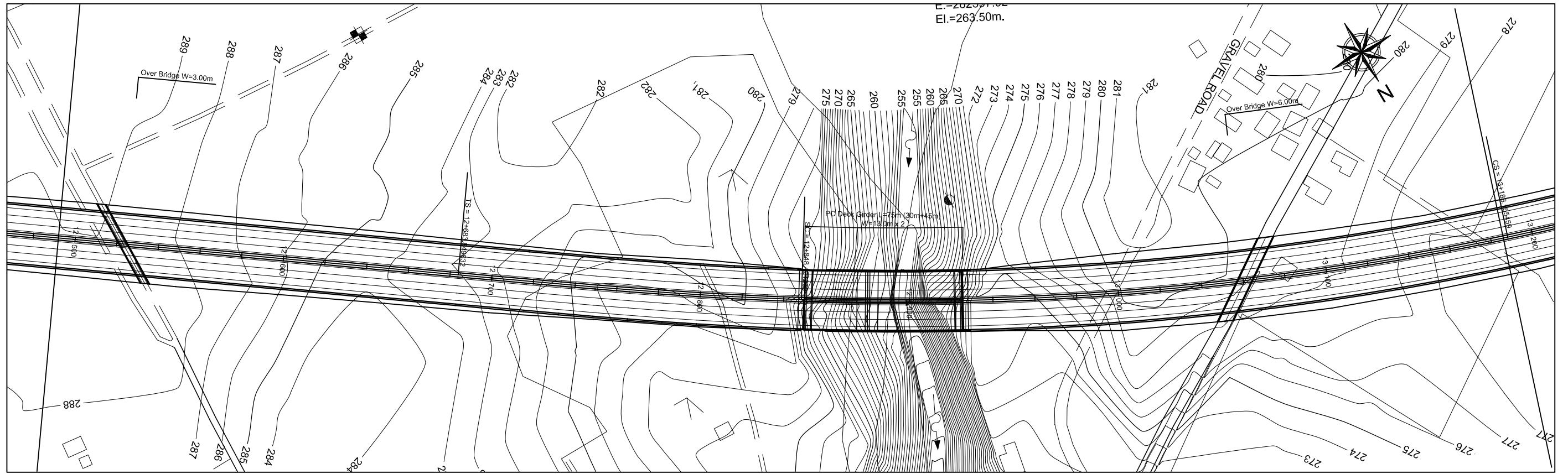


GRADE	1.154%										4.667%										1.942%																
PROPOSED HEIGHT	278.077	278.308	278.423	278.556	278.927	279.439	280.091	280.884	281.333	281.800	282.733	283.667	284.600	285.533	286.467	287.400	288.333	289.267	290.200	291.133	292.067	293.000	293.933	294.867	295.800	296.733	297.667	298.600	299.533	300.467	299.277	299.285	299.029	298.641	298.252	297.864	297.476
GROUND HEIGHT	283.92	284.32	284.76	285.48	286.00	287.06	287.95	288.74	288.38	288.98	288.27	288.49	288.76	288.62	289.36	290.00	290.91	292.05	293.18	294.02	295.09	296.26	297.33	298.10	297.90	297.14	296.57	296.43	296.36	296.36	296.41	296.66	297.16	297.65	297.87	298.11	
STATION	11+104	11+120	11+140	11+150	11+160	11+180	11+200	11+220	11+240	11+250	11+260	11+280	11+300	11+320	11+340	11+360	11+380	11+400	11+420	11+440	11+460	11+480	11+500	11+520	11+540	11+560	11+580	11+600	11+620	11+640	11+660	11+680	11+700	11+720	11+740	11+760	11+780
CURVE ELEMENT	R=00 L=374.786										R=500 L=166.667										R=1500.000 L=782.107																



GRADE	-1.942%																																		
PROPOSED HEIGHT	297.087	296.699	296.311	295.922	295.534	295.146	294.757	294.369	293.981	293.592	293.204	292.816	292.427	292.039	291.650	291.262	290.874	290.485	290.097	289.709	289.320	288.932	288.544	288.155	287.767	287.379	286.990	286.602	286.214	285.825	285.437	285.049	284.660	284.272	283.883
GROUND HEIGHT	297.98	296.34	294.86	294.41	292.28	290.87	290.06	289.38	289.48	289.45	289.41	289.39	289.37	289.93	290.56	290.83	290.52	290.21	290.31	290.42	290.19	289.58	284.89	287.70	289.76	289.08	288.51	287.66	287.03	286.35	286.24	287.32	288.45	288.42	288.75
STATION	11+888	11+820	11+840	11+860	11+880	11+900	11+920	11+940	11+960	11+980	12+000	12+020	12+040	12+060	12+080	12+100	12+120	12+140	12+160	12+180	12+200	12+220	12+240	12+260	12+280	12+300	12+320	12+340	12+360	12+380	12+400	12+420	12+440	12+460	12+480
CURVE ELEMENT	R=1500.000 L=762.107															R=0 L=166.667										R=0 L=249.744									



GRADE	-1.942%										280.000	-2.184%										271.700	-0.137%																	
PROPOSED HEIGHT	283.495	283.107	281.728	282.330	281.942	281.553	281.165	280.971	280.775	280.377	279.970	279.552	279.125	278.908	278.672	278.689	278.253	277.827	277.401	277.000	276.574	276.195	275.758	274.321	273.884	273.447	273.011	272.792	272.584	272.229	271.956	271.765	271.655	271.632	271.618	271.590	271.563	271.536		
GROUND HEIGHT	288.99	288.79	288.47	287.82	286.97	286.09	284.90	284.30	283.92	283.92	283.19	282.27	281.18	278.90	278.67	278.68	279.00	279.29	279.10	278.27	277.00	276.85	268.96	274.29	274.72	273.25	279.78	280.35	279.94	279.18	279.21	279.14	279.14	278.57	277.69	277.00	276.85	276.85		
STATION	12+492	12+500	12+520	12+540	12+560	12+580	12+600	12+620	12+630	12+640	12+660	12+680	12+700	12+720	12+730	12+740	12+760	12+780	12+800	12+820	12+840	12+860	12+880	12+900	12+920	12+940	12+960	12+980	13+000	13+010	13+020	13+040	13+060	13+080	13+100	13+110	13+120	13+140	13+160	13+180
CURVE ELEMENT	R=00 L=249.744										A=480 L=164.571										R=1400.000 L=339.734																			

**JICA** JAPAN INTERNATIONAL COOPERATION AGENCY  
**DPWH** DEPARTMENT OF PUBLIC WORKS AND HIGHWAYS

**ALMEC** ALMEC CORPORATION  
**NKK** NIPPON KOEI CO., LTD.

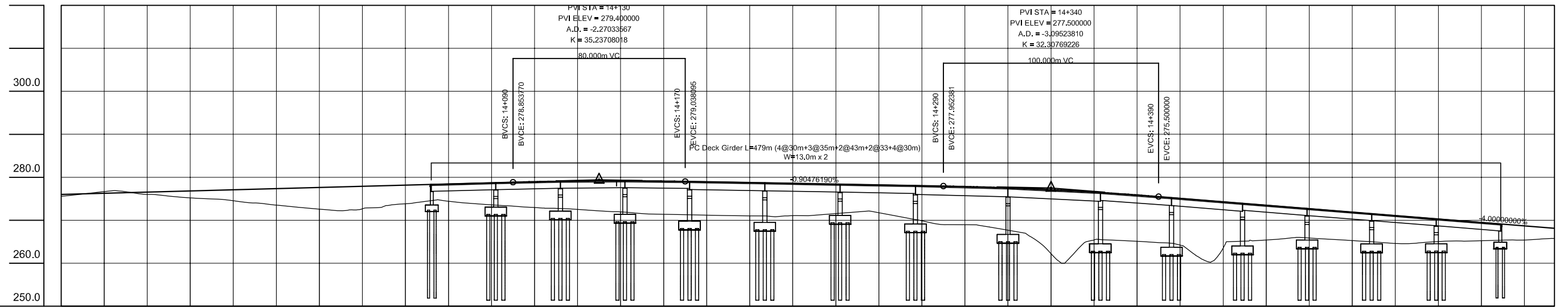
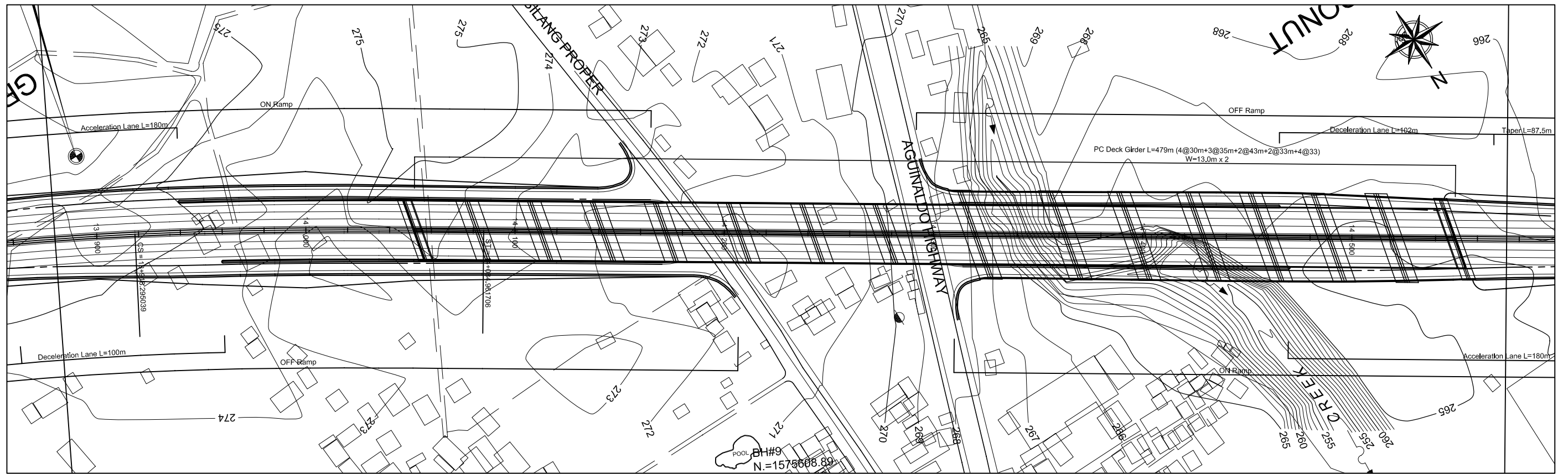
REMARKS:

THE FEASIBILITY STUDY AND IMPLEMENTATION SUPPORT  
 ON THE CALA EAST-WEST NATIONAL ROAD PROJECT

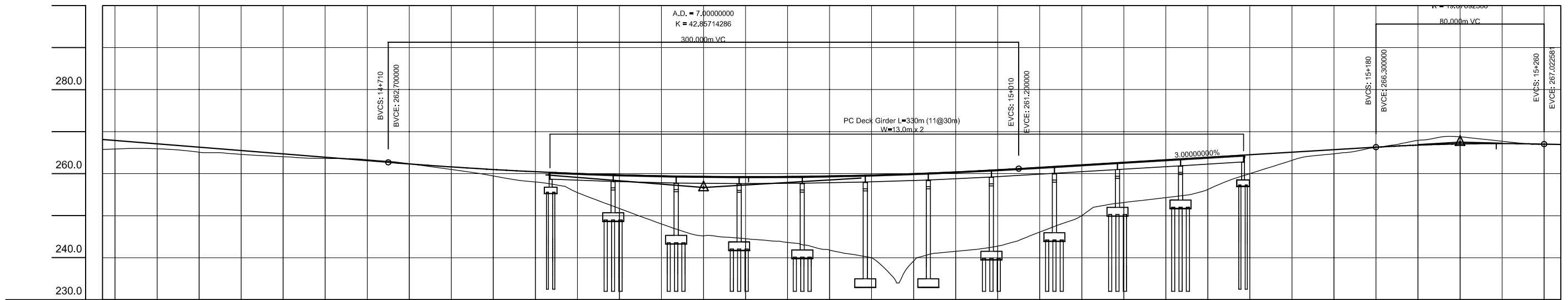
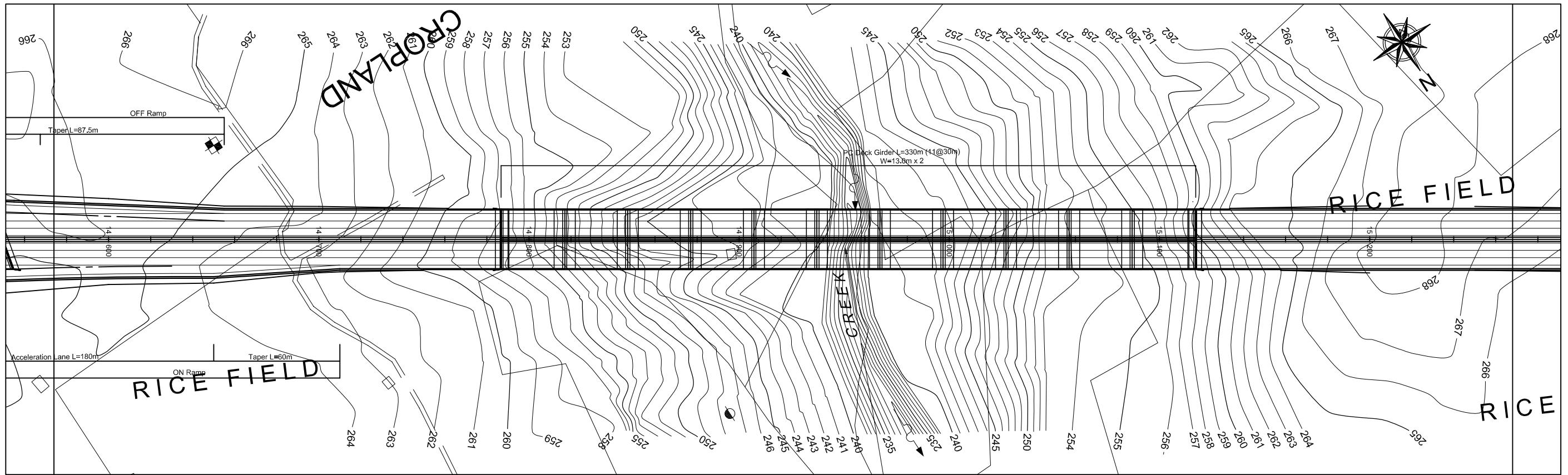
DRAWING TITLE: CALA Expressway Plan & Profile (19/33)

SCALE: 1:2,000  
 DRAWING NO.: CE-19  
 SHEET NO.:





GRADE	1.366%													279.400	-0.905%													277.500	-4.000%																																																																																																																																																																																																																																																																																																																																																																																																																																																																																																																																																																																																																																																																																																																																																																																																																																																																																																																																																																																												
PROPOSED HEIGHT	275.986	276.259	276.532	276.805	277.079	277.352	277.625	277.898	278.171	278.444	278.717	278.990	279.263	279.536	279.809	280.082	280.355	280.628	280.901	281.174	281.447	281.720	281.993	282.266	282.539	282.812	283.085	283.358	283.631	283.904	284.177	284.450	284.723	284.996	285.269	285.542	285.815	286.088	286.361	286.634	286.907	287.180	287.453	287.726	287.999	288.272	288.545	288.818	289.091	289.364	289.637	289.910	290.183	290.456	290.729	291.002	291.275	291.548	291.821	292.094	292.367	292.640	292.913	293.186	293.459	293.732	294.005	294.278	294.551	294.824	295.097	295.370	295.643	295.916	296.189	296.462	296.735	297.008	297.281	297.554	297.827	298.100	298.373	298.646	298.919	299.192	299.465	299.738	300.011	300.284	300.557	300.830	301.103	301.376	301.649	301.922	302.195	302.468	302.741	303.014	303.287	303.560	303.833	304.106	304.379	304.652	304.925	305.198	305.471	305.744	306.017	306.290	306.563	306.836	307.109	307.382	307.655	307.928	308.201	308.474	308.747	309.020	309.293	309.566	309.839	310.112	310.385	310.658	310.931	311.204	311.477	311.750	312.023	312.296	312.569	312.842	313.115	313.388	313.661	313.934	314.207	314.480	314.753	315.026	315.299	315.572	315.845	316.118	316.391	316.664	316.937	317.210	317.483	317.756	318.029	318.302	318.575	318.848	319.121	319.394	319.667	319.940	320.213	320.486	320.759	321.032	321.305	321.578	321.851	322.124	322.397	322.670	322.943	323.216	323.489	323.762	324.035	324.308	324.581	324.854	325.127	325.400	325.673	325.946	326.219	326.492	326.765	327.038	327.311	327.584	327.857	328.130	328.403	328.676	328.949	329.222	329.495	329.768	330.041	330.314	330.587	330.860	331.133	331.406	331.679	331.952	332.225	332.498	332.771	333.044	333.317	333.590	333.863	334.136	334.409	334.682	334.955	335.228	335.501	335.774	336.047	336.320	336.593	336.866	337.139	337.412	337.685	337.958	338.231	338.504	338.777	339.050	339.323	339.596	339.869	340.142	340.415	340.688	340.961	341.234	341.507	341.780	342.053	342.326	342.599	342.872	343.145	343.418	343.691	343.964	344.237	344.510	344.783	345.056	345.329	345.602	345.875	346.148	346.421	346.694	346.967	347.240	347.513	347.786	348.059	348.332	348.605	348.878	349.151	349.424	349.697	349.970	350.243	350.516	350.789	351.062	351.335	351.608	351.881	352.154	352.427	352.700	352.973	353.246	353.519	353.792	354.065	354.338	354.611	354.884	355.157	355.430	355.703	355.976	356.249	356.522	356.795	357.068	357.341	357.614	357.887	358.160	358.433	358.706	358.979	359.252	359.525	359.798	360.071	360.344	360.617	360.890	361.163	361.436	361.709	361.982	362.255	362.528	362.801	363.074	363.347	363.620	363.893	364.166	364.439	364.712	364.985	365.258	365.531	365.804	366.077	366.350	366.623	366.896	367.169	367.442	367.715	367.988	368.261	368.534	368.807	369.080	369.353	369.626	369.899	370.172	370.445	370.718	370.991	371.264	371.537	371.810	372.083	372.356	372.629	372.902	373.175	373.448	373.721	373.994	374.267	374.540	374.813	375.086	375.359	375.632	375.905	376.178	376.451	376.724	376.997	377.270	377.543	377.816	378.089	378.362	378.635	378.908	379.181	379.454	379.727	380.000	380.273	380.546	380.819	381.092	381.365	381.638	381.911	382.184	382.457	382.730	383.003	383.276	383.549	383.822	384.095	384.368	384.641	384.914	385.187	385.460	385.733	386.006	386.279	386.552	386.825	387.098	387.371	387.644	387.917	388.190	388.463	388.736	389.009	389.282	389.555	389.828	390.101	390.374	390.647	390.920	391.193	391.466	391.739	392.012	392.285	392.558	392.831	393.104	393.377	393.650	393.923	394.196	394.469	394.742	395.015	395.288	395.561	395.834	396.107	396.380	396.653	396.926	397.199	397.472	397.745	398.018	398.291	398.564	398.837	399.110	399.383	399.656	399.929	400.202	400.475	400.748	401.021	401.294	401.567	401.840	402.113	402.386	402.659	402.932	403.205	403.478	403.751	404.024	404.297	404.570	404.843	405.116	405.389	405.662	405.935	406.208	406.481	406.754	407.027	407.300	407.573	407.846	408.119	408.392	408.665	408.938	409.211	409.484	409.757	410.030	410.303	410.576	410.849	411.122	411.395	411.668	411.941	412.214	412.487	412.760	413.033	413.306	413.579	413.852	414.125	414.398	414.671	414.944	415.217	415.490	415.763	416.036	416.309	416.582	416.855	417.128	417.401	417.674	417.947	418.220	418.493	418.766	419.039	419.312	419.585	419.858	420.131	420.404	420.677	420.950	421.223	421.496	421.769	422.042	422.315	422.588	422.861	423.134	423.407	423.680	423.953	424.226	424.499	424.772	425.045	425.318	425.591	425.864	426.137	426.410	426.683	426.956	427.229	427.502	427.775	428.048	428.321	428.594	428.867	429.140	429.413	429.686	429.959	430.232	430.505	430.778	431.051	431.324	431.597	431.870	432.143	432.416	432.689	432.962	433.235	433.508	433.781	434.054	434.327	434.600	434.873	435.146	435.419	435.692	435.965	436.238	436.511	436.784	437.057	437.330	437.603	437.876	438.149	438.422	438.695	438.968	439.241	439.514	439.787	440.060	440.333	440.606	440.879	441.152	441.425	441.698	441.971	442.244	442.517	442.790	443.063	443.336	443.609	443.882	444.155	444.428	444.701	444.974	445.247	445.520	445.793	446.066	446.339	446.612	446.885	447.158	447.431	447.704	447.977	448.250	448.523	448.796	449.069	449.342	449.615	449.888	450.161	450.434	450.707	450.980	451.253	451.526	451.799	452.072	452.345	452.618	452.891	453.164	453.437	453.710	453.983	454.256	454.529	454.802	455.075	455.348	455.621	455.894	456.167	456.440	456.713	456.986	457.259	457.532	457.805	458.078	458.351	458.624	458.897	459.170	459.443	459.716	460.000	460.273	460.546	460.819	461.092	461.365	461.638	461.911	462.184	462.457	462.730	463.003	463.276	463.549	463.822	464.095	464.368	464.641	464.914	465.187	465.460	465.733	466.006	466.279	466.552	466.825	467.098	467.371	467.644	467.917	468.190	468.463	468.736	469.009	469.282	469.555	469.828	470.101	470.374	470.647	470.920	471.193	471.466	471.739	472.012	472.285	472.558	472.831	473.104	473.377	473.650	473.923	474.196	474.469	474.742	475.015	475.288	475.561	475.834	476.107	476.380	476.653	476.926	477.199	477.472	477.745	478.018	478.291	478.564	478.837	479.110	479.383	479.656	479.929	480.202	480.475	480.748	481.021	481.294	481.567	481.840	482.113	482.386	482.659	482.932	483.205	483.478	483.751	484.024	484.297	484.570	484.843	485.116	485.389	485.662	485.935	486.208	486.481	486.754	487.027	487.300	487.573	487.846	488.119	488.392	488.665	488.938	490.000	490.273	490.546	490.819	491.092	491.365	491.638	491.911	492.184	492.457	492.730	493.003	493.276	493.549	493.822	494.095	494.368	494.641	494.914	495.187	495.460	495.733	496.006	496.279	496.552	496.825	497.098	497.371	497.644	497.917	498.190	498.463	498.736	499.009	499.282	499.555	499.828	500.101	500.374	500.647	500.920	501.193	501.466	501.739	502.012	502.285	502.558	502.831	503.104	503.377	503.650	503.923	504.196	504.469	504.742	505.015	505.288	505.561	505.834	506.107	506.380	506.653	506.926	507.199	507.472	507.745	508.018	508.291	508.564	508.837	509.110	509.383	509.656	509.929	510.202	510.475	510.748	511.021	511.294	511.567	511.840	512.113	512.386	512.659	512.932	513.205	513.478	513.751	514.024	514.297	514.570	514.843	515.116	515.389	515.662	515.935	516.208	516.481	516.754	517.027	517.300	517.573	517.846	518.119	518.392	518.665	518.938	519.211	519.484	519.757	520.030	520.303	520.576	520.849	521.122	521.395	521.668	521.941	522.214	522.487	522.760	523.033	523.306	523.579	523.852	524.125	524.398	524.671	524.944	525.217	525.490	525.763	526.036	526.309	526.582	526.855	527.128	527.401	527.674	527.947	528.220	528.493	528.766	529.039	529.312	529.585	529.858	530.131	530.404	530.677	530.950	531.223	531.496	531.769	532.042	532.315	532.588	532.861	533.134	533.407	533.680	533.953	534.226	534.499	534.772	535.045	535.318	535.591	535.864	536.137	536.410	536.683	536.956	537.229	537.502	537.775	538.048	538.321	538.594	538.867	539.140	539.413	539.686	539.959	540.232	540.505	540.778	541.051	541.324	541.597	541.870	542.143	542.416	542.689	542.962	543.235	543.508	543.781	544.054	544.327	544.600	544.873	545.146	545.419



GRADE	4.000%		256.700		3.000%		267.997		-1.194%																																																										
PROPOSED HEIGHT	267.900	267.100	266.300	265.500	264.700	263.900	263.100	262.312	261.605	260.992	260.472	259.712	259.472	259.325	259.272	259.312	259.445	259.672	259.992	260.405	260.912	261.200	261.500	262.100	262.700	263.300	263.900	264.500	265.100	265.700	266.300	266.795	267.081	267.156	267.023																																
GROUND HEIGHT	265.78	265.96	265.91	265.10	266.300	264.57	264.04	263.65	263.900	263.34	263.34	262.35	262.312	261.00	261.605	259.45	260.992	258.04	260.472	255.53	260.045	251.71	259.712	248.04	259.472	245.22	259.325	244.51	259.272	243.65	259.312	241.84	259.445	240.01	259.672	239.24	259.992	241.52	260.405	242.79	260.912	246.10	261.500	250.03	262.100	253.14	262.700	254.31	263.300	256.26	263.900	260.02	264.500	263.15	265.100	264.74	265.700	266.21	266.300	267.90	266.795	268.74	267.081	267.70	267.156	267.00	267.023
STATION	14+574	14+580	14+600	14+620	14+640	14+660	14+680	14+700	14+710	14+720	14+740	14+760	14+780	14+800	14+820	14+840	14+860	14+880	14+900	14+920	14+940	14+960	14+980	15+000	15+010	15+020	15+040	15+060	15+080	15+100	15+120	15+140	15+160	15+180	15+200	15+220	15+240	15+260																													
CURVE ELEMENT	R=00 L=1306.379																																																																		