

GRADE	-0.136%																									26.500	-0.124%																									26.276	0.343%																								
PROPOSED HEIGHT	26.991	26.964	26.936	26.909	26.882	26.855	26.827	26.800	26.773	26.745	26.718	26.691	26.664	26.636	26.609	26.582	26.555	26.527	26.501	26.475	26.450	26.425	26.401	26.376	26.351	26.326	26.313	26.323	26.357	26.414	26.482	26.551	26.620	26.688	26.757																																										
GROUND HEIGHT	25.83	25.82	25.19	25.00	25.00	25.00	25.37	25.23	25.43	25.58	25.80	25.97	25.89	25.81	25.78	25.72	25.62	25.82	25.92	25.34	25.23	25.25	25.28	25.30	25.32	25.35	25.35	25.35	25.28	25.27	25.29	25.27	25.30	25.41	25.66																																										
STATION	13+880	13+900	13+920	13+940	13+960	13+980	14+000	14+020	14+040	14+060	14+080	14+100	14+120	14+140	14+160	14+180	14+200	14+220	14+240	14+260	14+280	14+300	14+320	14+340	14+360	14+380	14+400	14+420	14+440	14+460	14+480	14+500	14+520	14+540	14+560																																										
CURVE ELEMENT	R=0 L=685.378						A=300 L=112.500						R=800.000 L=290.682						A=300 L=112.500						R=0 L=79.394						R=800.000 L=791.252																																														

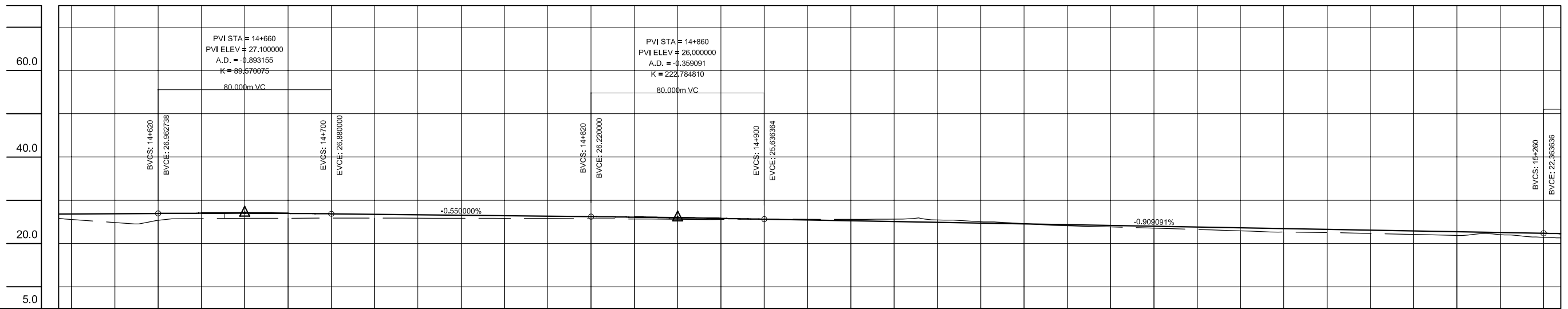
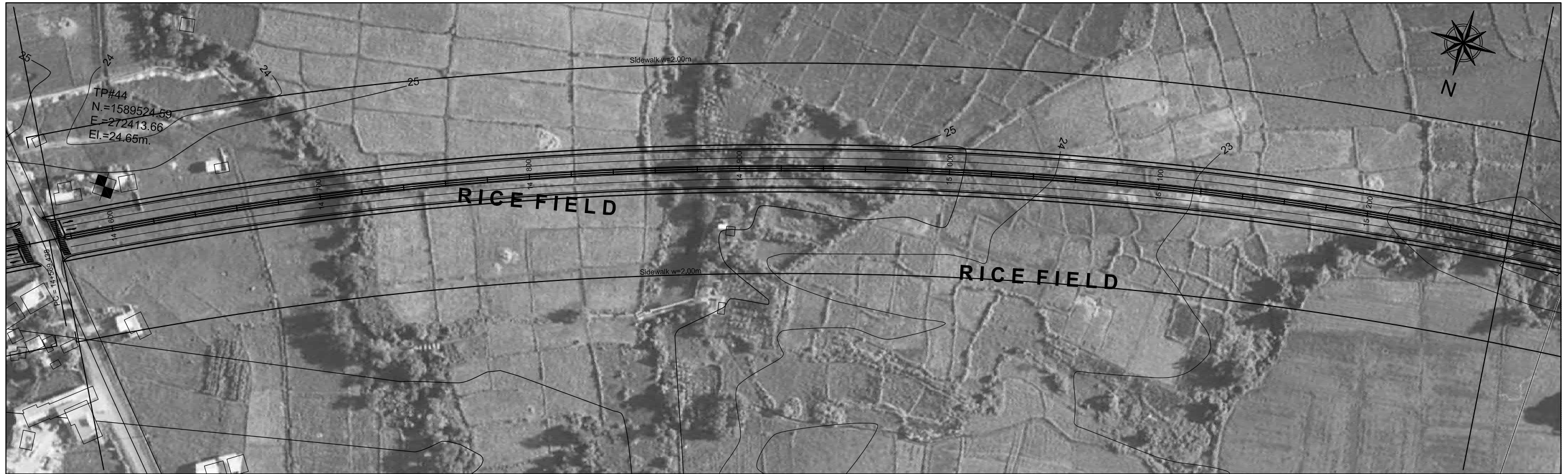
JICA JAPAN INTERNATIONAL COOPERATION AGENCY
DEPARTMENT OF PUBLIC WORKS AND HIGHWAYS

ALMEC ALMEC CORPORATION
NIPPON KOEI CO., LTD.

REMARKS:

THE FEASIBILITY STUDY AND IMPLEMENTATION SUPPORT
 ON THE CALA EAST-WEST NATIONAL ROAD PROJECT
 DRAWING TITLE: **Daang Hari Road Plan & Profile (21/31)**

SCALE: 1:2,000
 DRAWING NO.: DH-21
 SHEET NO.:



GRADE	0.343%		27.100										-0.550%										26.000				-0.909%				22.000								
PROPOSED HEIGHT	26.825	26.894	26.963	27.009	27.011	26.968	26.880	26.770	26.660	26.550	26.440	26.330	26.220	26.101	25.964	25.809	25.636	25.455	25.273	25.091	24.909	24.727	24.545	24.364	24.182	24.000	23.818	23.636	23.455	23.273	23.091	22.909	22.727	22.545	22.364				
GROUND HEIGHT	25.87	25.58	24.85	25.36	25.77	25.83	25.86	25.87	25.88	25.87	25.84	25.82	25.79	25.73	25.68	25.62	25.58	25.62	25.58	25.64	25.50	25.04	24.62	24.09	23.84	23.54	23.24	22.94	22.68	22.53	22.34	22.11	21.90	22.09	21.44				
STATION	14+574	14+580	14+600	14+620	14+640	14+660	14+680	14+700	14+720	14+740	14+760	14+780	14+800	14+820	14+840	14+860	14+880	14+900	14+920	14+940	14+960	14+980	15+000	15+020	15+040	15+060	15+080	15+100	15+120	15+140	15+160	15+180	15+200	15+220	15+240	15+260			
CURVE ELEMENT	R=1800.000 L=791.252																																						