

GRADE	1.921%																																			
PROPOSED HEIGHT	179.02	179.327	179.711	180.096	180.480	180.864	181.248	181.633	182.017	182.401	182.785	183.170	183.554	183.938	184.323	184.707	185.091	185.475	185.860	186.244	186.628	187.013	187.397	187.781	188.165	188.550	188.934	189.318	189.702	190.087	190.471	190.855	191.240	191.624	192.008	
GROUND HEIGHT	179.02	179.28	179.54	179.82	180.11	180.43	180.864	181.32	182.19	182.94	183.53	183.93	184.16	184.06	183.99	183.95	183.48	182.10	183.59	184.46	184.97	185.58	186.17	186.74	187.58	188.19	188.66	188.47	188.26	188.51	188.94	188.71	189.36	189.93	190.69	191.52
STATION	24+984	25+000	25+020	25+040	25+060	25+080	25+100	25+120	25+140	25+160	25+180	25+200	25+220	25+240	25+260	25+280	25+300	25+320	25+340	25+360	25+380	25+400	25+420	25+440	25+460	25+480	25+500	25+520	25+540	25+560	25+580	25+600	25+620	25+640	25+660	
CURVE ELEMENT	A=250 L=83.333		R=750.000 L=244.895														A=250 L=83.333		R=00 L=489.354																	

**JICA** JAPAN INTERNATIONAL COOPERATION AGENCY  
**DPWH** DEPARTMENT OF PUBLIC WORKS AND HIGHWAYS

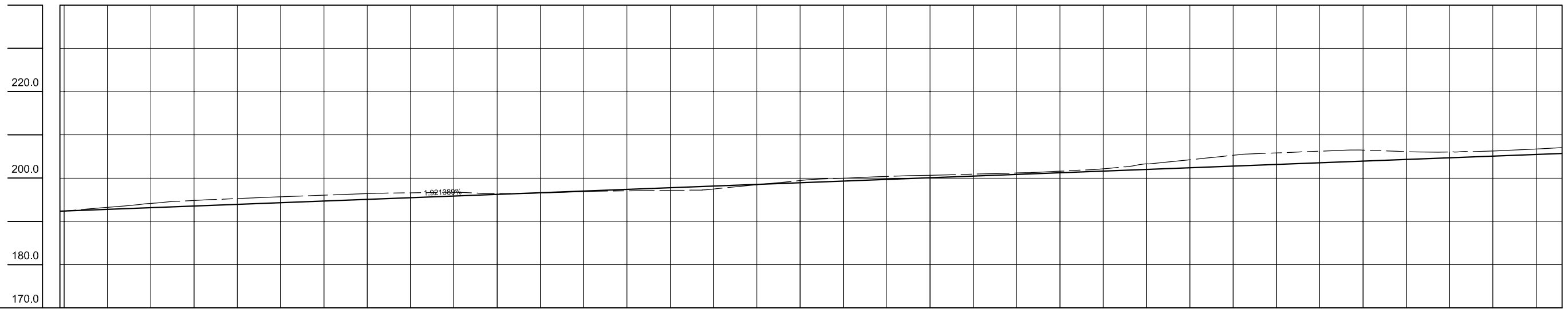
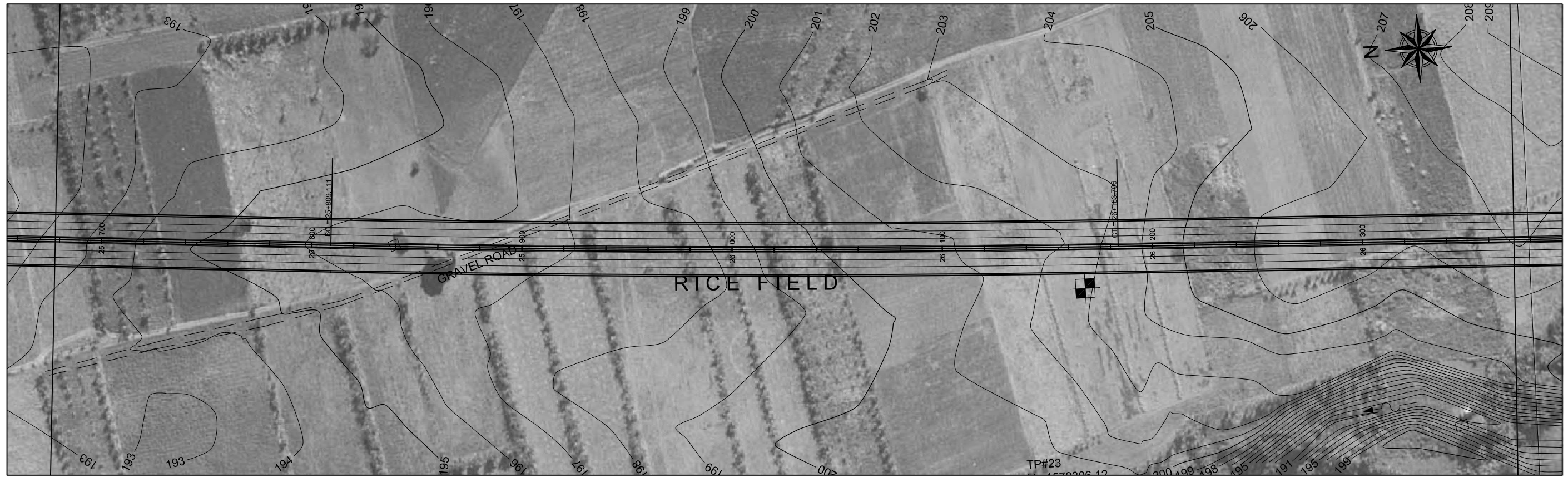
**ALMEC** ALMEC CORPORATION  
**NKK** NIPPON KOEI CO., LTD.

REMARKS:

THE FEASIBILITY STUDY AND IMPLEMENTATION SUPPORT  
 ON THE CALA EAST-WEST NATIONAL ROAD PROJECT

DRAWING TITLE: North-South Road Plan & Profile (37/41)

SCALE: 1:2,000  
 DRAWING NO.: NS-37  
 SHEET NO.:



GRADE	1.921%																																		
PROPOSED HEIGHT	192.392	192.777	193.161	193.545	193.930	194.314	194.698	195.082	195.467	195.851	196.235	196.619	197.004	197.388	197.772	198.157	198.541	198.925	199.309	199.694	200.078	200.462	200.847	201.231	201.615	201.999	202.384	202.768	203.152	203.536	203.921	204.305	204.689	205.074	205.458
GROUND HEIGHT	192.36	193.25	194.15	194.84	195.28	195.69	196.06	196.43	196.61	196.73	196.45	196.55	196.89	197.07	197.17	197.50	198.48	199.45	199.98	200.40	200.67	200.92	201.18	201.61	202.14	203.23	204.26	205.28	205.83	206.22	206.45	206.12	206.05	206.28	206.73
STATION	25+666	25+700	25+720	25+740	25+760	25+780	25+800	25+820	25+840	25+860	25+880	25+900	25+920	25+940	25+960	25+980	26+000	26+020	26+040	26+060	26+080	26+100	26+120	26+140	26+160	26+180	26+200	26+220	26+240	26+260	26+280	26+300	26+320	26+340	26+360
CURVE ELEMENT	R=0 L=499.354							R=10000.000 L=374.595												R=0 L=1606.594															