

GRADE	2.093%										118.000										-2.051%										110.000																			
PROPOSED HEIGHT	111.512	111.930	112.349	112.767	113.186	113.605	114.023	114.442	114.860	115.279	115.698	116.116	116.535	116.953	117.289	117.459	117.463	117.302	116.974	116.564	116.154	115.744	115.333	114.923	114.513	114.103	113.692	113.282	112.872	112.462	112.051	111.641	111.231	111.026	110.839	110.574														
GROUND HEIGHT	112.00	112.06	112.02	111.72	112.08	112.48	112.97	113.72	114.17	115.48	115.89	116.05	115.59	115.23	116.15	117.19	117.44	116.78	116.24	115.63	115.05	114.78	114.52	114.01	112.48	110.68	109.31	109.91	110.38	108.75	106.64	105.32	104.99	104.77	105.54															
STATION	20+820	20+840	20+860	20+880	20+900	20+920	20+940	20+960	20+980	21+000	21+020	21+040	21+060	21+080	21+100	21+120	21+140	21+160	21+180	21+200	21+220	21+240	21+260	21+280	21+300	21+320	21+340	21+360	21+380	21+400	21+420	21+440	21+460	21+470	21+480	21+500														
CURVE ELEMENT	R=0 L=604.070										As=250 L=89.286										R=700.000 L=106.443										As=250 L=89.286										R=0 L=129.579									

JICA JAPAN INTERNATIONAL COOPERATION AGENCY
 DEPARTMENT OF PUBLIC WORKS AND HIGHWAYS

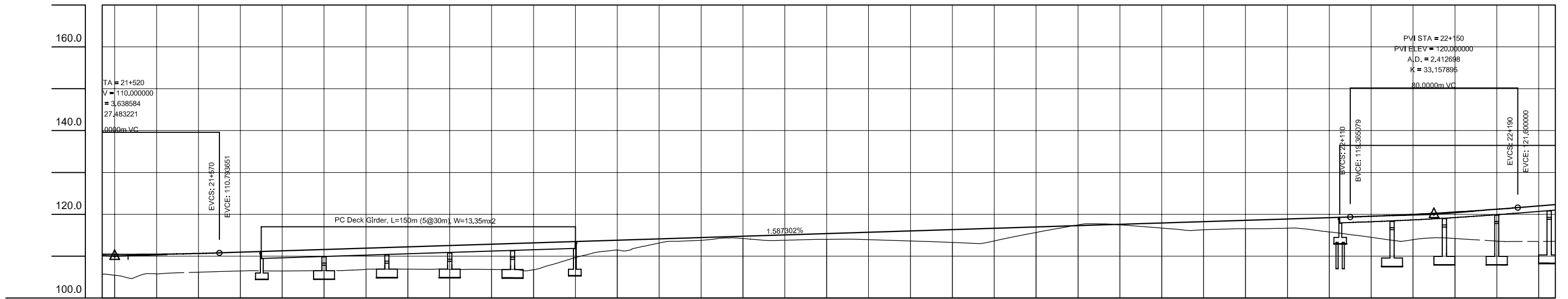
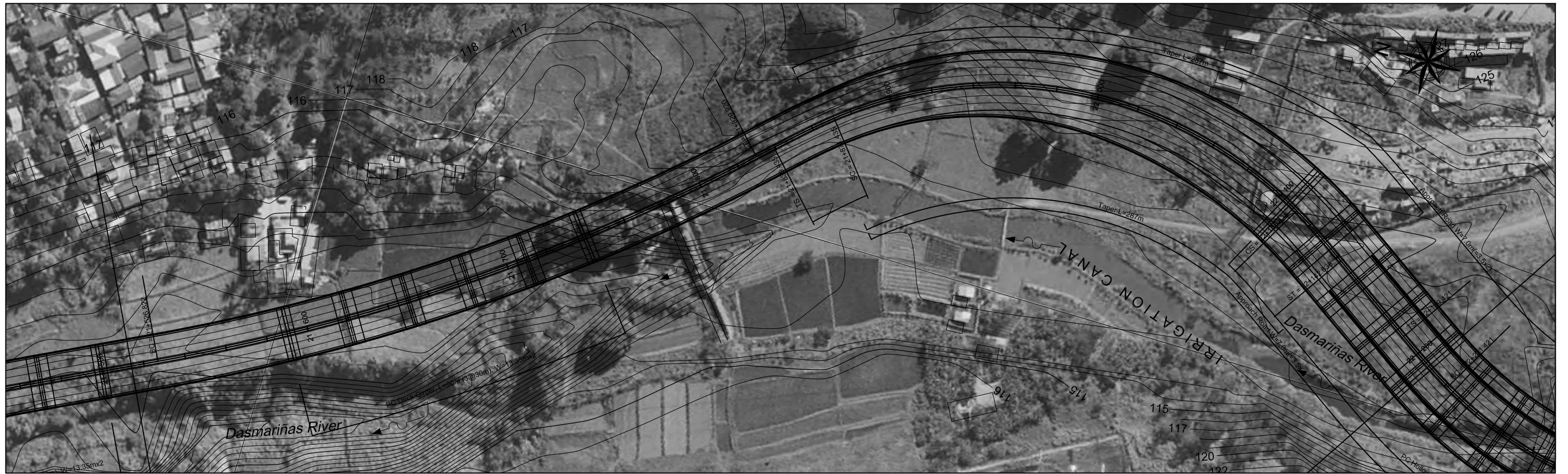
ALMEC ALMEC CORPORATION
 NIPPON KOEI CO., LTD.

REMARKS:

THE FEASIBILITY STUDY AND IMPLEMENTATION SUPPORT
 ON THE CALA EAST-WEST NATIONAL ROAD PROJECT

DRAWING TITLE: North-South Road Plan & Profile (31/41)

SCALE: 1:2,000
 DRAWING NO.: NS-31
 SHEET NO.:



GRADE	110.000																				1.587%										120.000										4.000%									
PROPOSED HEIGHT	110.455	110.481	110.653	110.794	110.952	111.270	111.587	111.905	112.222	112.540	112.857	113.175	113.492	113.810	114.127	114.444	114.762	115.079	115.397	115.714	116.032	116.349	116.667	116.984	117.302	117.619	117.937	118.254	118.571	118.889	119.206	119.365	119.539	119.977	120.536	121.215	121.600	122.000												
GROUND HEIGHT	105.71	105.44	105.78	106.19	106.48	106.46	106.56	106.88	106.91	106.87	106.85	106.78	109.68	111.48	113.15	113.79	114.24	113.82	114.04	113.95	113.64	113.29	113.65	115.66	117.47	117.49	116.73	116.31	116.56	116.70	115.80	114.52	113.96	114.24	113.82	113.53														
STATION	21+514	21+520	21+540	21+560	21+570	21+580	21+600	21+620	21+640	21+660	21+680	21+700	21+720	21+740	21+760	21+780	21+800	21+820	21+840	21+860	21+880	21+900	21+920	21+940	21+960	21+980	22+000	22+020	22+040	22+060	22+080	22+100	22+110	22+120	22+140	22+160	22+180	22+190	22+200											
CURVE ELEMENT	R=00 L=129.572		R=1000.000 L=303.098																		R=00 L=9.515		A=80 L=32.000		R=200.000 L=239.203										A=80 L=32.000		R=00 L=46.783		A=80 L=32.000											

JAPAN INTERNATIONAL COOPERATION AGENCY DEPARTMENT OF PUBLIC WORKS AND HIGHWAYS	ALMEC CORPORATION NIPPON KOEI CO., LTD.	REMARKS:	THE FEASIBILITY STUDY AND IMPLEMENTATION SUPPORT ON THE CALA EAST-WEST NATIONAL ROAD PROJECT	
			DRAWING TITLE North-South Road Plan & Profile (32/41)	SCALE 1:2,000 DRAWING NO. NS-32 SHEET NO.