

GRADE	1.019%										0.627%																													
PROPOSED HEIGHT	2.158	2.362	2.565	2.769	2.973	3.177	3.381	3.585	3.788	3.992	4.186	4.361	4.516	4.651	4.776	4.902	5.027	5.153	5.278	5.404	5.529	5.655	5.780	5.906	6.031	6.157	6.282	6.408	6.533	6.659	6.784	6.910	7.035	7.161	7.286					
GROUND HEIGHT	1.22	1.14	2.20	2.13	2.34	2.48	2.46	2.56	2.39	2.63	2.80	3.08	3.65	3.89	4.15	4.12	4.22	4.38	4.10	4.44	4.83	5.00	4.97	5.08	5.07	5.42	5.31	5.47	5.75	5.70	5.88	6.10	6.33	6.24	6.84	7.02				
STATION	2+776	2+780	2+800	2+820	2+840	2+860	2+880	2+900	2+920	2+940	2+960	2+980	3+000	3+020	3+040	3+060	3+080	3+100	3+120	3+140	3+160	3+180	3+200	3+220	3+240	3+260	3+280	3+300	3+320	3+340	3+360	3+380	3+400	3+420	3+440	3+460				
CURVE ELEMENT	R=00 L=222.754										A=140 L=68.772					R=285.000 L=74.163					A=140 L=68.772					R=00 L=218.563					A=150 L=84.266					R=350.000 L=163.857				

**JICA** JAPAN INTERNATIONAL COOPERATION AGENCY  
**DPWH** DEPARTMENT OF PUBLIC WORKS AND HIGHWAYS

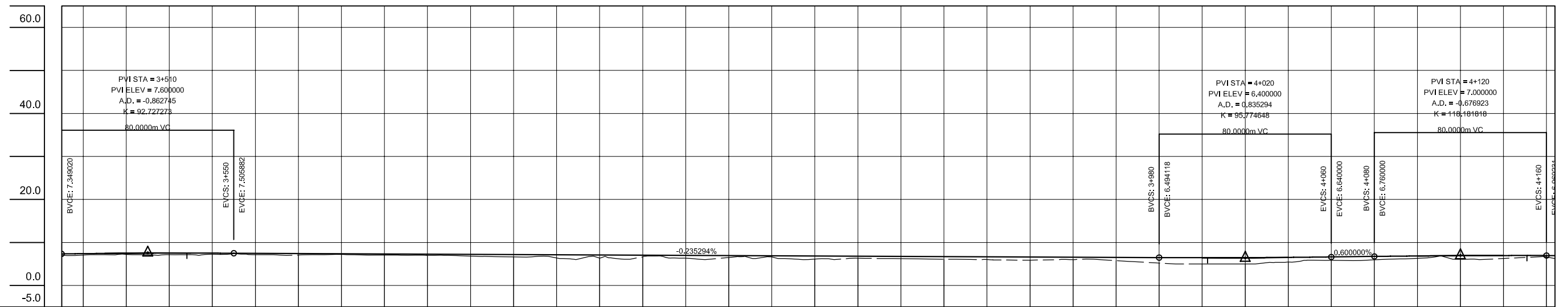
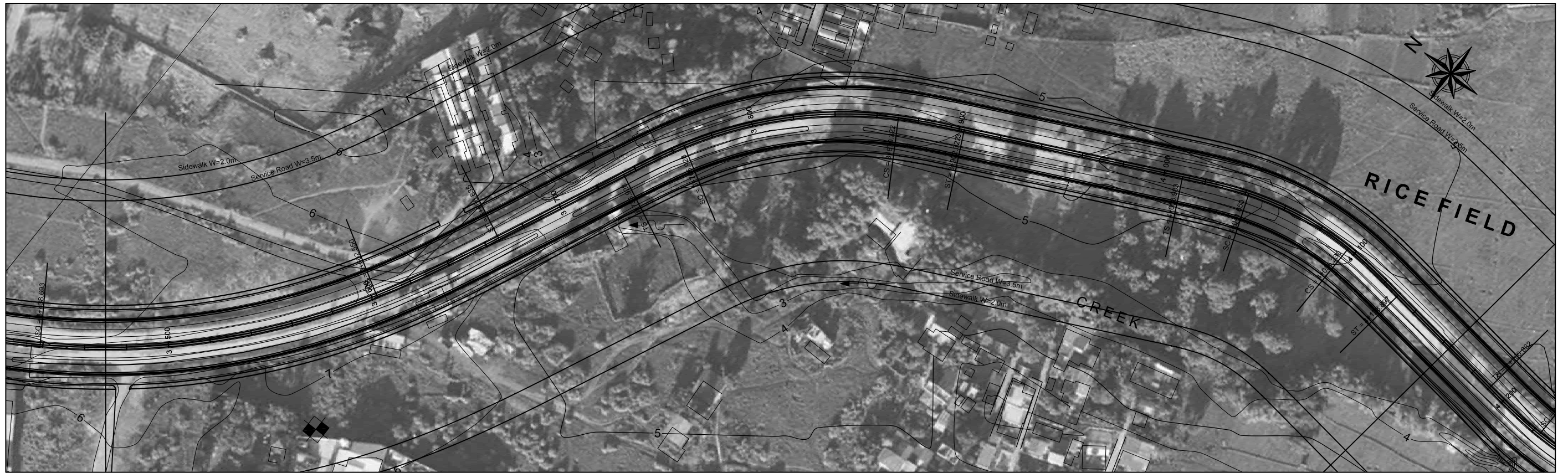
**ALMEC** ALMEC CORPORATION  
**NKC** NIPPON KOEI CO., LTD.

REMARKS:

THE FEASIBILITY STUDY AND IMPLEMENTATION SUPPORT  
 ON THE CALA EAST-WEST NATIONAL ROAD PROJECT

DRAWING TITLE: North-South Road Plan & Profile ( 5 /41)

SCALE: 1:2,000  
 DRAWING NO.: NS-5  
 SHEET NO.:



GRADE	0.627%		7.600										-0.235%										6.400		0.600%		7.000		-0.077%								
PROPOSED HEIGHT	7.349	7.406	7.489	7.528	7.524	7.506	7.482	7.435	7.388	7.341	7.294	7.247	7.200	7.153	7.106	7.059	7.012	6.965	6.918	6.871	6.824	6.776	6.729	6.682	6.635	6.588	6.541	6.494	6.468	6.484	6.541	6.640	6.760	6.863	6.932	6.968	6.969
GROUND HEIGHT	7.03	7.08	7.24	7.15	7.23	7.15	7.15	7.10	7.19	7.07	7.01	6.82	6.65	6.40	6.40	6.64	6.34	6.52	6.63	6.16	6.35	6.24	6.12	6.00	5.89	6.04	5.78	5.22	4.99	4.99	5.45	5.85	5.97	6.33	6.12	6.28	6.63
STATION	3+470	3+480	3+500	3+520	3+540	3+550	3+560	3+580	3+600	3+620	3+640	3+660	3+680	3+700	3+720	3+740	3+760	3+780	3+800	3+820	3+840	3+860	3+880	3+900	3+920	3+940	3+960	3+980	4+000	4+020	4+040	4+060	4+080	4+100	4+120	4+140	4+160
CURVE ELEMENT	R=350.000 L=163.857		A=150 L=84.288										R=00 L=67.092		A=80 L=32.000		R=200.000 L=104.395		A=80 L=32.000		R=00 L=106.661		A=70 L=32.667		R=150.000 L=54.580		A=70 L=32.667		R=00 L=62.035								

**JICA** JAPAN INTERNATIONAL COOPERATION AGENCY  
**DEPARTMENT OF PUBLIC WORKS AND HIGHWAYS**

**ALMEC** ALMEC CORPORATION  
**NIPPON KOEI CO., LTD.**

REMARKS:

THE FEASIBILITY STUDY AND IMPLEMENTATION SUPPORT  
 ON THE CALA EAST-WEST NATIONAL ROAD PROJECT

DRAWING TITLE: North-South Road Plan & Profile ( 6 /41)

SCALE: 1:2,000  
 DRAWING NO.: NS-6  
 SHEET NO.: