

## Appendix 7 Site Photographs for Damages on Asphalt Pavement

### 1. Meyungs Causeway (Japan Grant Aid, Completed in 2005)



Existence of holes due to loss of coarse aggregate, taken on February 13, 2006



Holes remained, taken on February 13, 2006



Local rutting and scratching surface by sudden wheel traction, taken on June 2, 2006



Wheel traction, taken on February 13, 2006



Wheel traction, taken on June 2, 2006



2. Airai Causeway (Japan Grant Aid, Completed in 2005)



Existence of holes due to loss of coarse aggregate, taken on January 27, 2006



Holes remained, taken on June 2, 2006



Holes on carriageway, taken on June 2, 2006



Holes on shoulder, taken on June 2, 2006



Holes on shoulder, taken on June 2, 2006



**3. Land-slide at Top Side (Completed in 2001)**



C-section STA5+980



C-section STA6+000

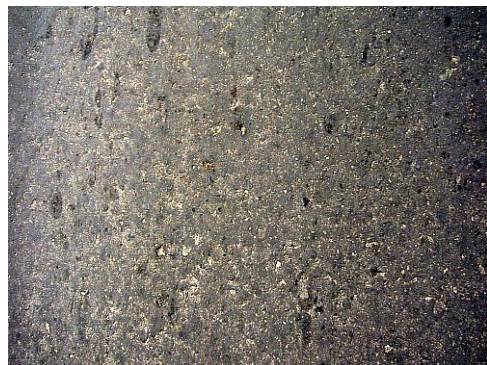


C-section STA6+030 Ravelling in progress

**4. Front of Epson Museum (Taiwan Aid, Completed in 2002)**



Existence of holes due to loss of coarse aggregate, taken on June 2, 2006



Holes remained, taken on June 2, 2006



Depressed Stud, taken on June 2, 2006

**5. International Airport (Japan Grant Aid, Completed in 2003)**



Loss of coarse aggregate and fine aggregate at the area without roof



Pavement damage at the area without roof



No damage at the area with roof