

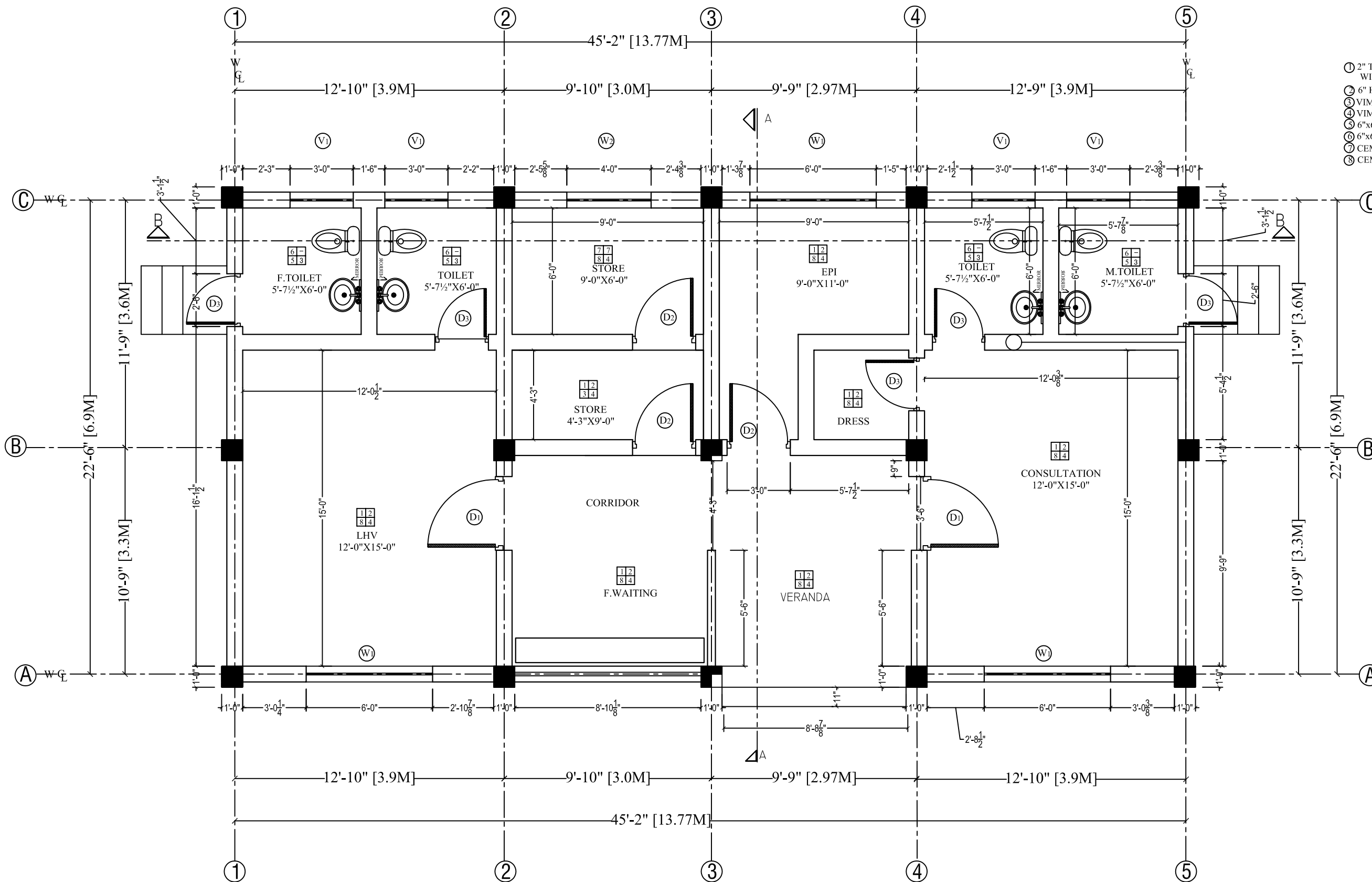
**SCHEDULE OF ROOM FINISHES**

FLOOR	●	●	SKIRTING
WALLS	●	●	CEILING

- ① 2" THICK TERRAZZO INGROYCEMENT WITH 1/2"x1 1/2"BLACK MARBLE DIVIDING STRIPS
- ② 6" HIGH & 1/2" THICK MARBLE IN WHITE CEMENT
- ③ VIMYLE POINT ON C.S PLASTER.
- ④ VIMYLE EMULSION ON C.S PLASTER.
- ⑤ 6"x6" GLAZED CERAMIC TILES
- ⑥ 6"x6" MAT FINISH CERAMIC TILES
- ⑦ CEMENT MORTAR STEEL TROWEL
- ⑧ CEMENT MORTAR E.P

**SCHEDULE OF OPENINGS**

SIZES.			
S/NO.	Name.	Width.	Height
01.	W1	6'-0"	4'-0"
	W2	4'-0"	4'-0"
	V1	3'-0"	2'-0"
02.	DOORS.		
	D1	3'-6"	
	D2	3'-0"	
	D3	2'-6"	



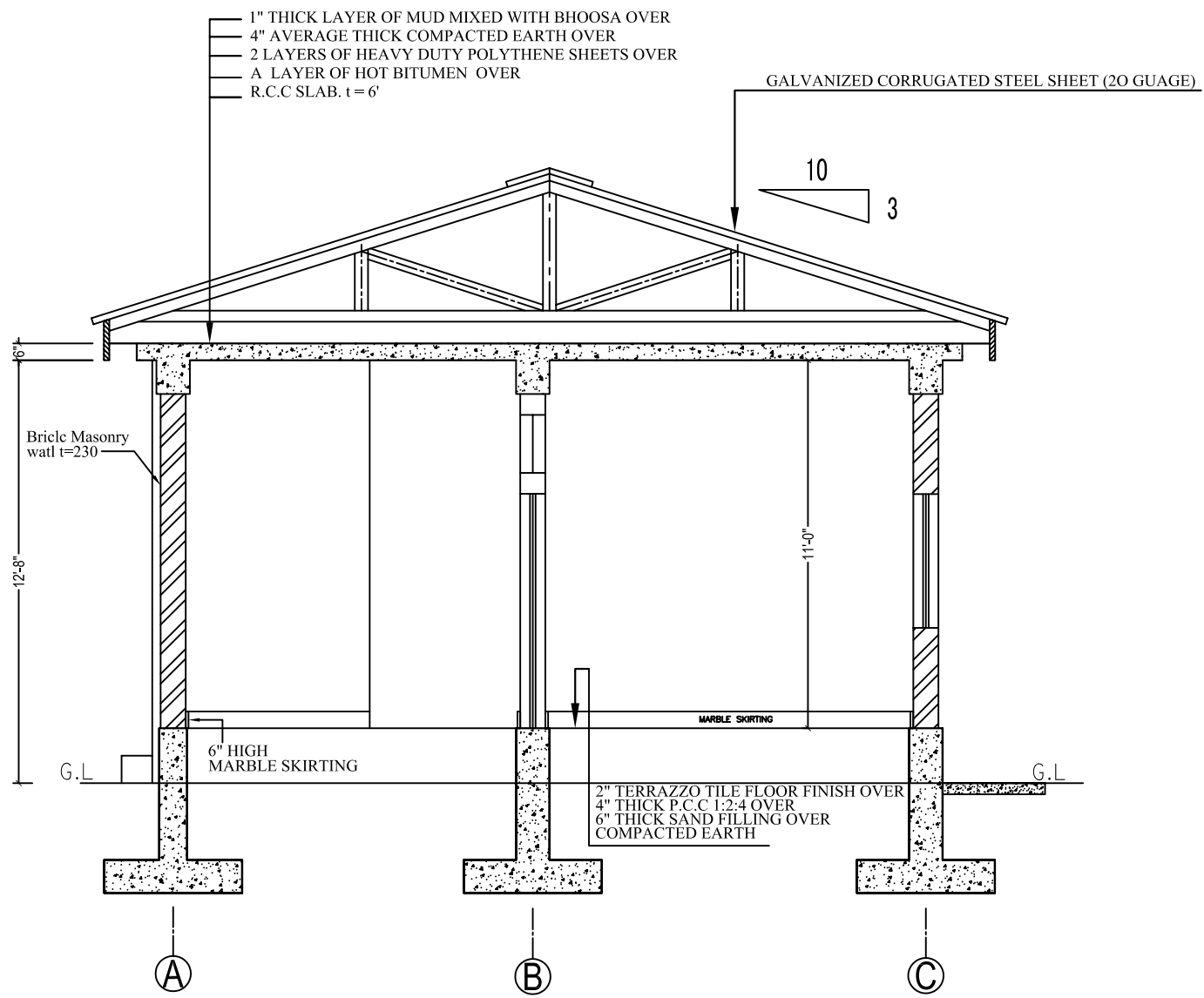
**FLOOR PLAN**



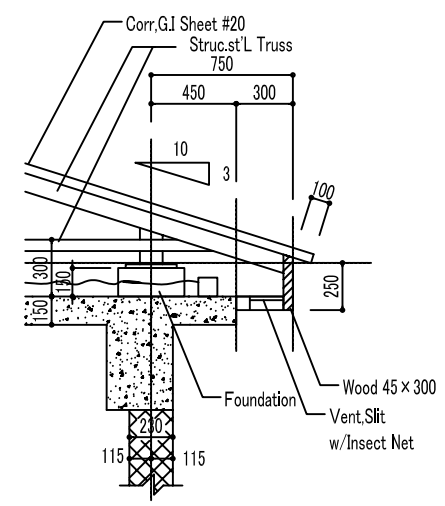
NOTE:

**BASIC HEALTH UNIT (BHU)**

THE OUTLINE DESIGN STUDY ON THE PROJECT FOR THE RECONSTRUCTION OF THE EARTHQUAKE FACILITIES					
NIPPON KOEI CO., LTD IN ASSOCIATION WITH BINKO INTERNATIONAL				DWG. TITLE: BHU- O.P.D	
PREPARED BY		CHECKED BY	APPROVED BY	<b>FLOOR PLAN</b>	
NAME	M.KASHIF	A. MORIOKA	Y.INOUE		
SIGNATURE					
DATE	/ /2006	/ /2006	/ /2006		
SCALE	1:60	SHEET NO.	A-2	REV. NO.	



**SECTION A-A**

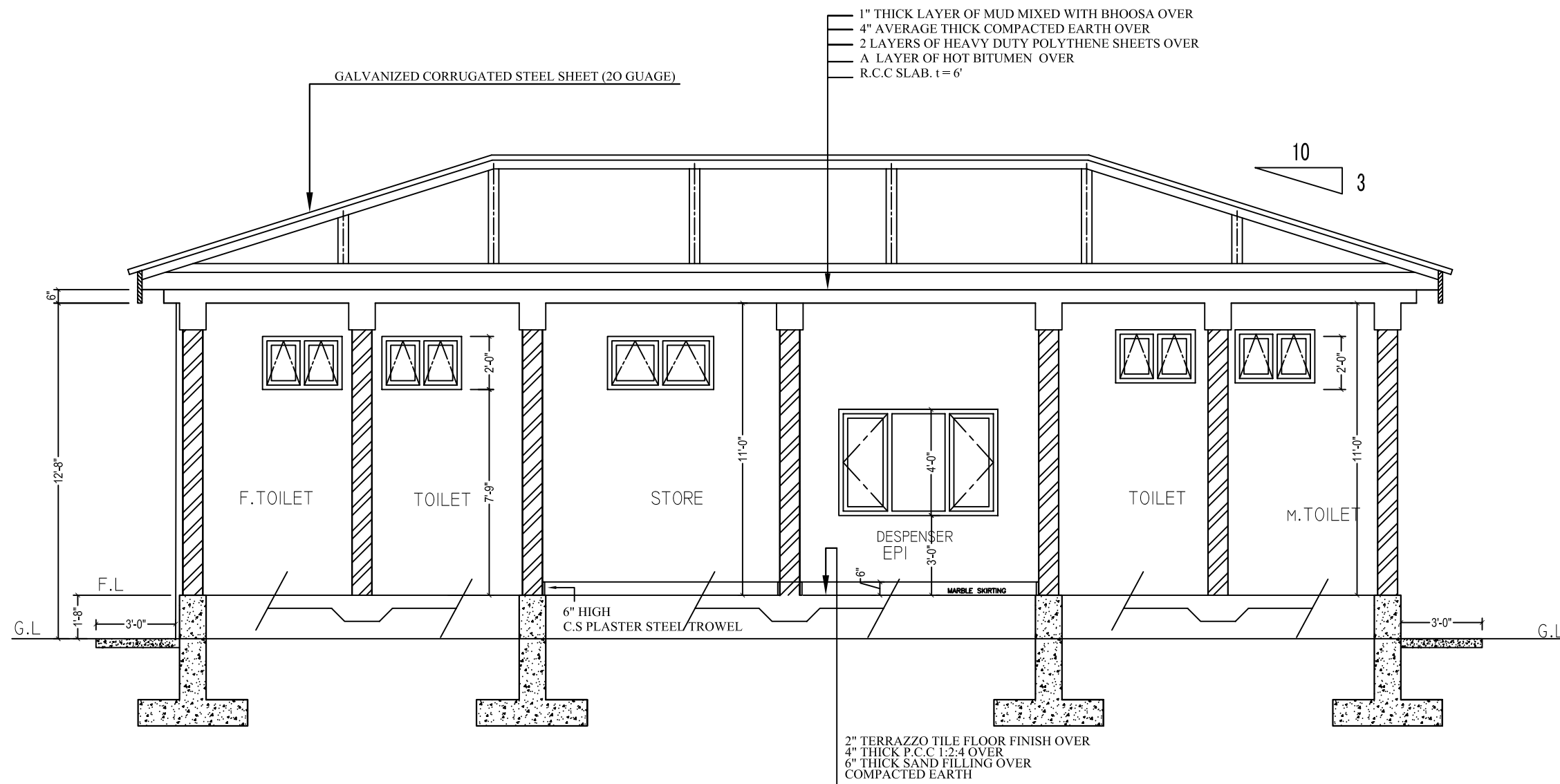


**TYPICAL EAVES DETAILS**  
S 1:40



NOTE:  
**BASIC HEALTH UNIT (BHU)**

THE OUTLINE DESIGN STUDY ON THE PROJECT FOR THE RECONSTRUCTION OF THE EARTHQUAKE-AFFECTED FACILITIES				DWG. TITLE: <b>BHU- O.P.D</b>		
NIPPON KOEI CO., LTD IN ASSOCIATION WITH BINKO INTERNATIONAL				<b>SECTION A-A</b>		
	PREPARED BY	CHECKED BY	APPROVED BY	SCALE	SHEET NO.	REV. NO.
NAME				1:60	A-3	
SIGNATURE						
DATE	/ /2006	/ /2006	/ /2006			



**SECTION B-B**



JAPAN INTERNATIONAL COOPERATION AGENCY

NOTE:

**BASIC HEALTH UNIT  
(BHU)**

THE OUTLINE DESIGN STUDY ON THE PROJECT FOR THE RECONSTRUCTION OF THE EARTHQUAKE FACILITIES

NIPPON KOEI CO., LTD IN ASSOCIATION WITH  
BINKO INTERNATIONAL

DWG. TITLE: BHU- O.P.D

**SECTION B-B**

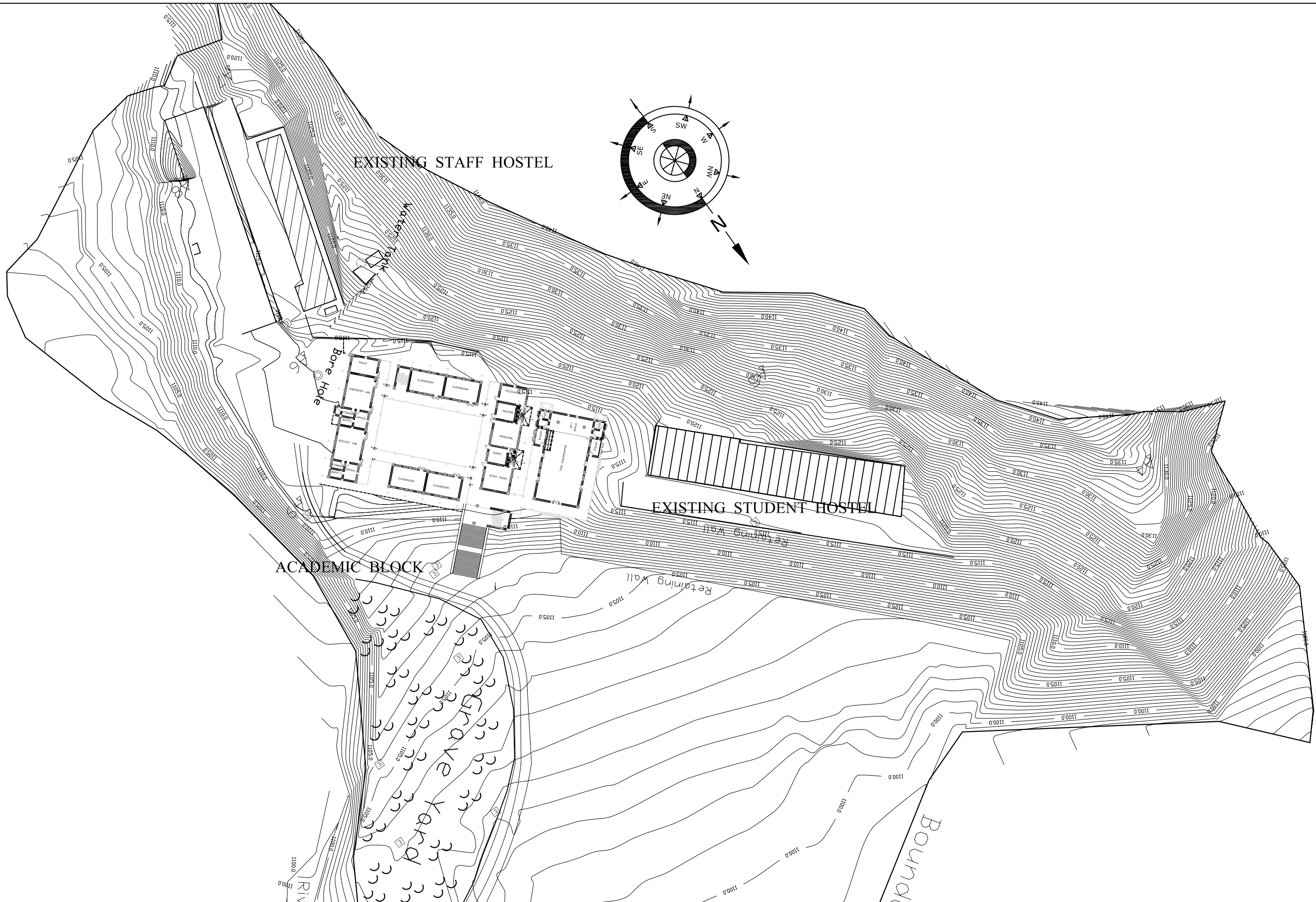
	PREPARED BY	CHECKED BY	APPROVED BY
NAME	M.KASHIF	A. MORIOKA	Y.INOUE
SIGNATURE			
DATE	/ /2006	/ /2006	/ /2006

SCALE	SHEET NO.	REV. NO.
1:60	A-4	

## ANNEX 2: DRAWING LIST (EDUCATION SECTOR)

### [Drawing List]

Government Degree College Battagram – Site Plan.....	AN2-1
Government Degree College Battagram – Academic Block – Ground Floor Plan .....	AN2-2
Government Degree College Battagram – Academic Block – 1 <sup>st</sup> Floor Plan.....	AN2-3
Government Degree College Battagram – Academic Block – Section.....	AN2-4
Government Centennial Model High School Battagram – Site Plan.....	AN2-5
Government Centennial Model High School Battagram – Classrooms – Ground Floor Plan .....	AN2-6
Government Centennial Model High School Battagram – Classrooms – 1 <sup>st</sup> Floor Plan .....	AN2-7
Government Centennial Model High School Battagram – Examination Hall – Floor Plan.....	AN2-8
Government Centennial Model High School Battagram – Computer Lab and Library – Plan.....	AN2-9
Government Centennial Model High School Battagram – Technical Lab and Agri. Stock Room – Floor Plan .....	AN2-10
Government Centennial Model High School Battagram – Administration Block – Floor Plan.....	AN2-11
Two Class Room Type (A) – Plan .....	AN2-12
Two Class Room Type (A) – Section.....	AN2-13
Two Class Room Type (B) – Plan.....	AN2-14
Two Class Room Type (B) – Section.....	AN2-15
Three Class Room Type (C) – Plan .....	AN2-16
Three Class Room Type (C) – Section.....	AN2-17
Four Class Room Type (D) – Plan.....	AN2-18
Four Class Room Type (D) – Section .....	AN2-19
Five Class Room Type (E) – Plan.....	AN2-20
Five Class Room Type (E) – Section.....	AN2-21
Two Class Room Type (F) – Plan.....	AN2-22
Two Class Room Type (F) – Section .....	AN2-23
Three Class Room Type (G) – Plan .....	AN2-24
Three Class Room Type (G) – Section .....	AN2-25
Four Class Room Type (H) – Plan.....	AN2-26
Four Class Room Type (H) – Section .....	AN2-27



JAPAN INTERNATIONAL COOPERATION AGENCY  
(JICA)

Building Name  
GOVERNMENT DEGREE COLLEGE BATTAGRAM

ACADEMIC BLOCK

THE PROJECT FOR THE RECONSTRUCTION OF THE EARTHQUAKE-AFFECTED FACILITIES

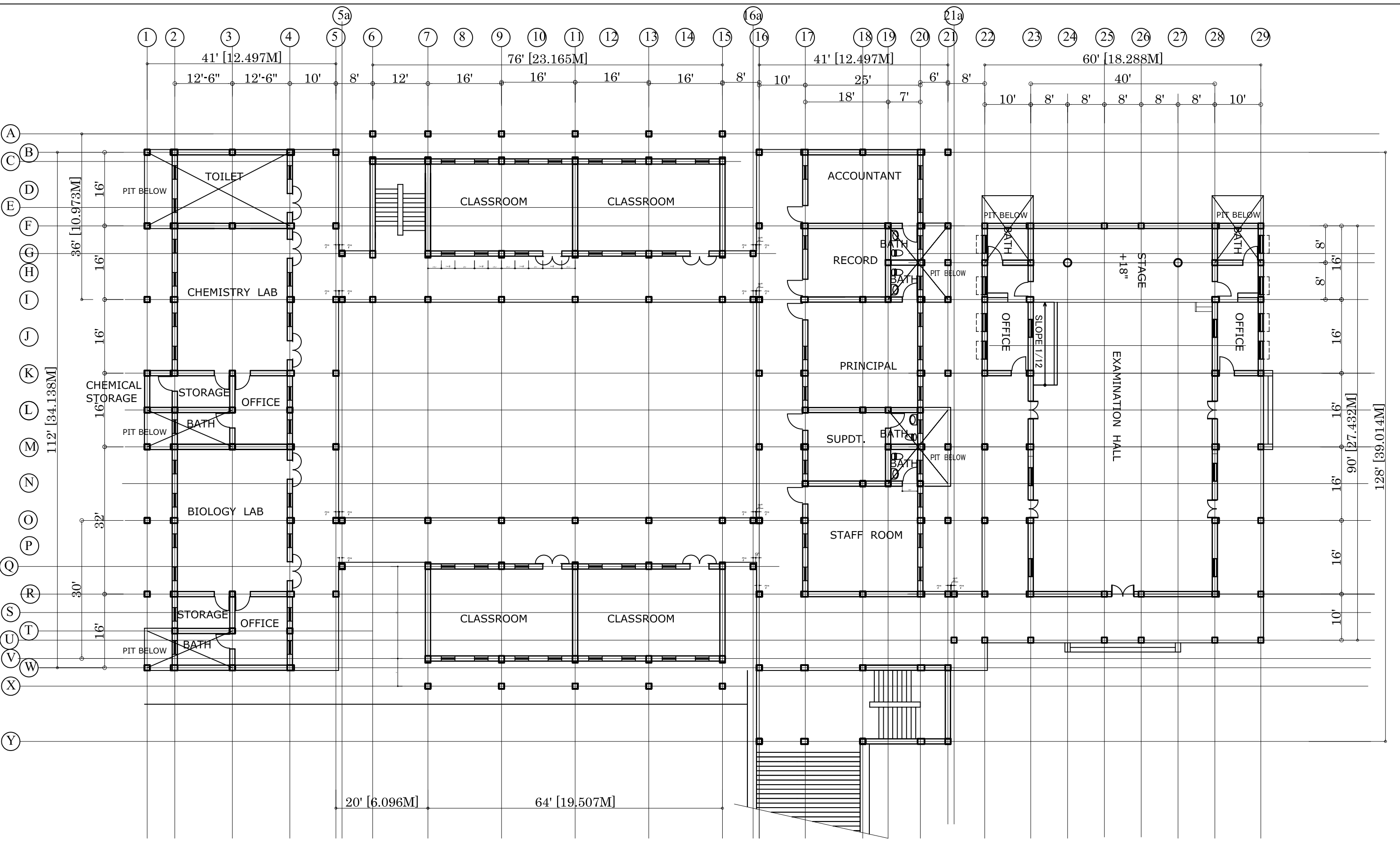
NIPPON KOEI CO., LTD IN ASSOCIATION WITH  
BINKO INTERNATIONAL

DRAWING TITLE

SITE PLAN 2

	PREPARED BY	CHECKED BY	APPROVED BY
NAME			
SIGNATURE			
DATE	JUNE, 2006	/ /2006	/ /2006

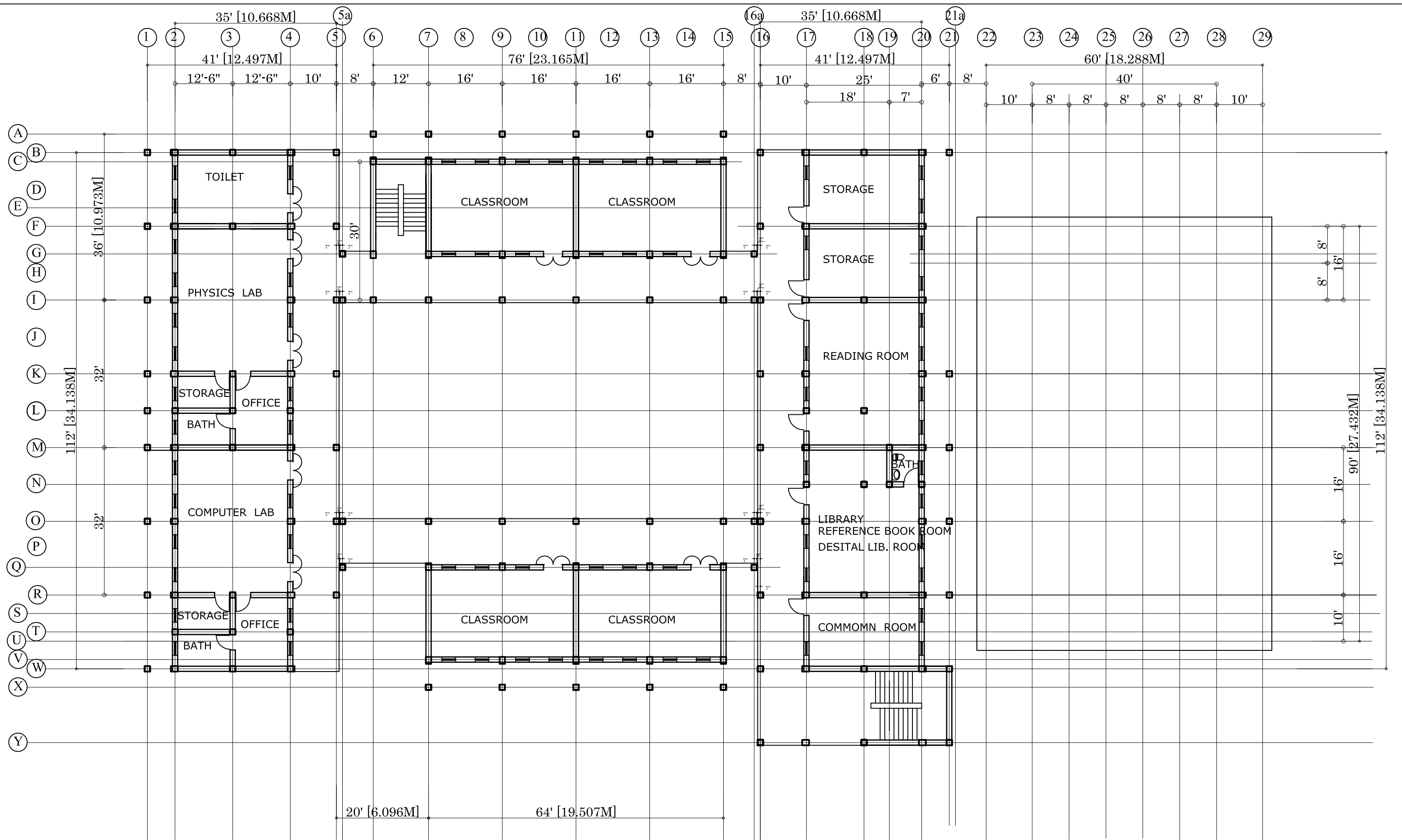
SCALE	SHEET NO.	REV. NO.
	A02	



JAPAN INTERNATIONAL COOPERATION AGENCY  
(JICA)

Building Name  
**GOVERNMENT DEGREE COLLEGE BATTAGRAM**  
**ACADEMIC BLOCK**

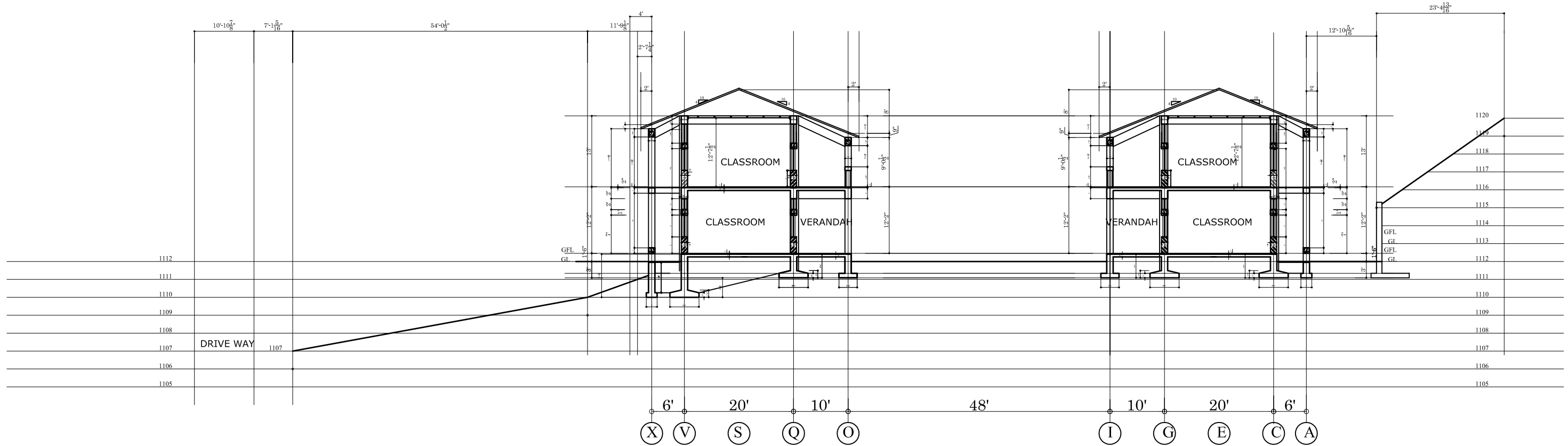
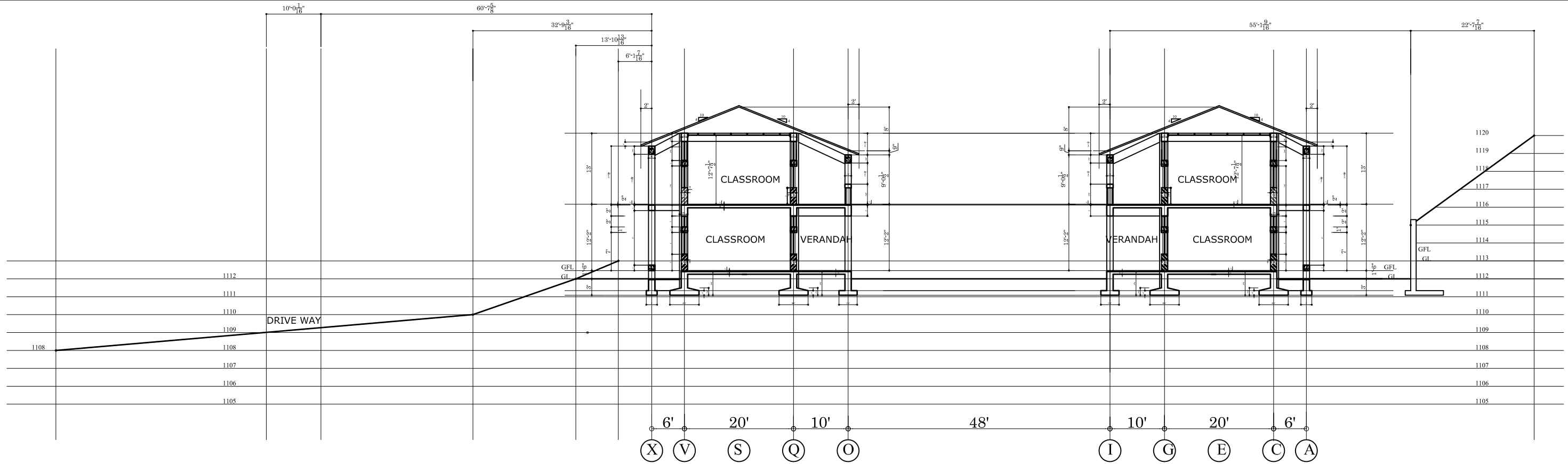
<b>THE PROJECT FOR THE RECONSTRUCTION OF THE EARTHQUAKE-AFFECTED FACILITIES</b>				DRAWING TITLE		
<b>NIPPON KOEI CO., LTD IN ASSOCIATION WITH BINKO INTERNATIONAL</b>				<b>GROUND FLOOR PLAN</b>		
PREPARED BY	CHECKED BY	APPROVED BY	SCALE	SHEET NO.	REV. NO.	
NAME						
SIGNATURE				A03		
DATE	JUNE, 2006	/ /2006	/ /2006			



JAPAN INTERNATIONAL COOPERATION AGENCY  
(JICA)

Building Name  
GOVERNMENT DEGREE COLLEGE BATTAGRAM  
**ACADEMIC BLOCK**

<b>THE PROJECT FOR THE RECONSTRUCTION OF THE EARTHQUAKE-AFFECTED FACILITIES</b>				DRAWING TITLE		
<b>NIPPON KOEI CO., LTD IN ASSOCIATION WITH BINKO INTERNATIONAL</b>				1ST FLOOR PLAN		
PREPARED BY	CHECKED BY	APPROVED BY	SCALE	SHEET NO.	REV. NO.	
NAME						
SIGNATURE						
DATE	JUNE, 2006	/ /2006		A04		



JAPAN INTERNATIONAL COOPERATION AGENCY  
(JICA)

Building Name  
GOVERNMENT DEGREE COLLEGE BATTAGRAM  
  
ACADEMIC BLOCK

THE PROJECT FOR THE RECONSTRUCTION OF THE EARTHQUAKE-AFFECTED FACILITIES

NIPPON KOEI CO., LTD IN ASSOCIATION WITH  
BINKO INTERNATIONAL

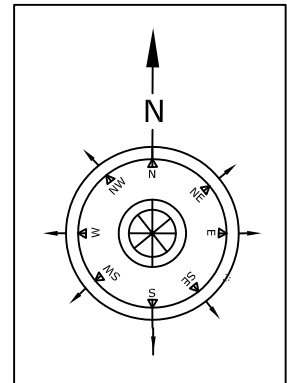
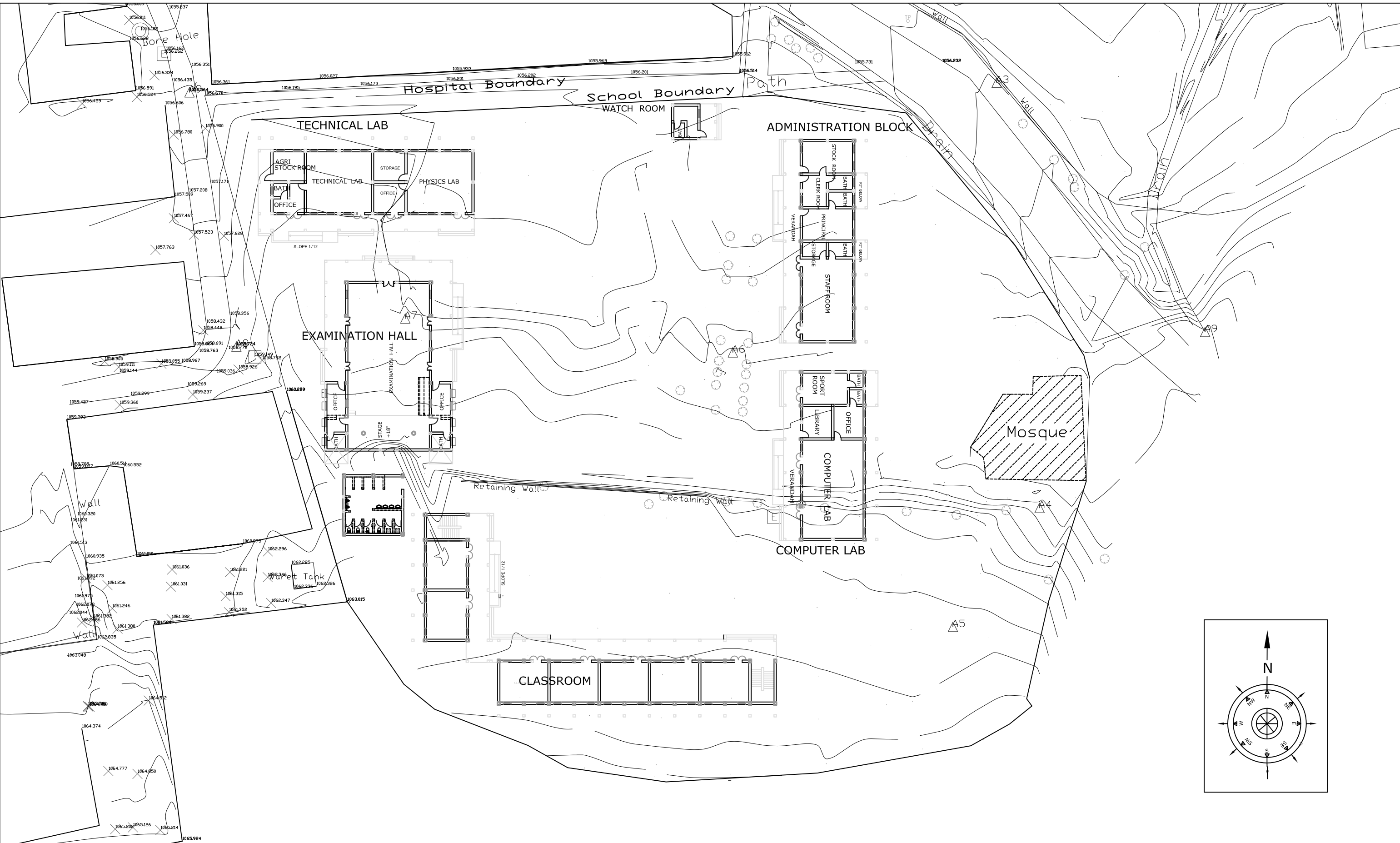
DRAWING TITLE

SECTION

	PREPARED BY	CHECKED BY	APPROVED BY
NAME			
SIGNATURE			
DATE	JUNE, 2006	/ /2006	/ /2006

SCALE	SHEET NO.	REV. NO.
	A13	

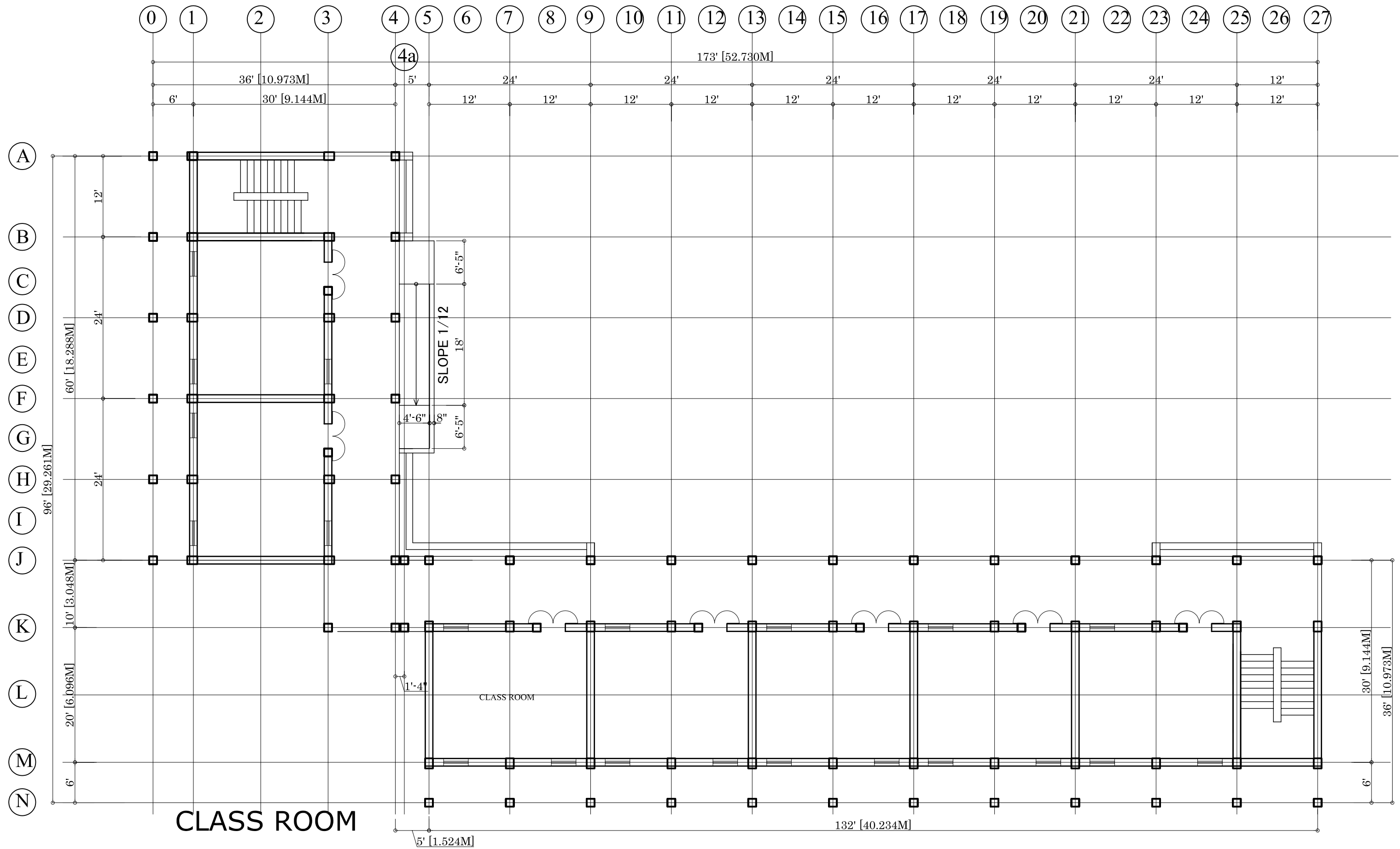




JAPAN INTERNATIONAL COOPERATION AGENCY  
(JICA)

Building Name  
**GOVERNMENT CENTENNIAL MODEL  
HIGH SCHOOL BATTAGRAM**

<b>THE PROJECT FOR THE RECONSTRUCTION OF THE EARTHQUAKE-AFFECTED FACILITIES</b>				DRAWING TITLE	
<b>NIPPON KOEI CO., LTD IN ASSOCIATION WITH BINKO INTERNATIONAL</b>				SITE PLAN 2	
PREPARED BY	CHECKED BY	APPROVED BY	SCALE	SHEET NO.	REV. NO.
NAME					
SIGNATURE					
DATE	JUNE, 2006	/ /2006	/ /2006	A02	



JAPAN INTERNATIONAL COOPERATION AGENCY  
(JICA)

Building Name  
**GOVERNMENT CENTENNIAL MODEL  
HIGH SCHOOL BATTAGRAM**

<b>THE PROJECT FOR THE RECONSTRUCTION OF THE EARTHQUAKE-AFFECTED FACILITIES</b>				DRAWING TITLE		
<b>NIPPON KOEI CO., LTD IN ASSOCIATION WITH BINKO INTERNATIONAL</b>				Classrooms GROUND FLOOR PLAN		
NAME	PREPARED BY	CHECKED BY	APPROVED BY	SCALE	SHEET NO.	REV. NO.
SIGNATURE					A03	
DATE	JUNE, 2006	/ /2006	/ /2006			