

LEGEND

	New Construction
	Existing Building

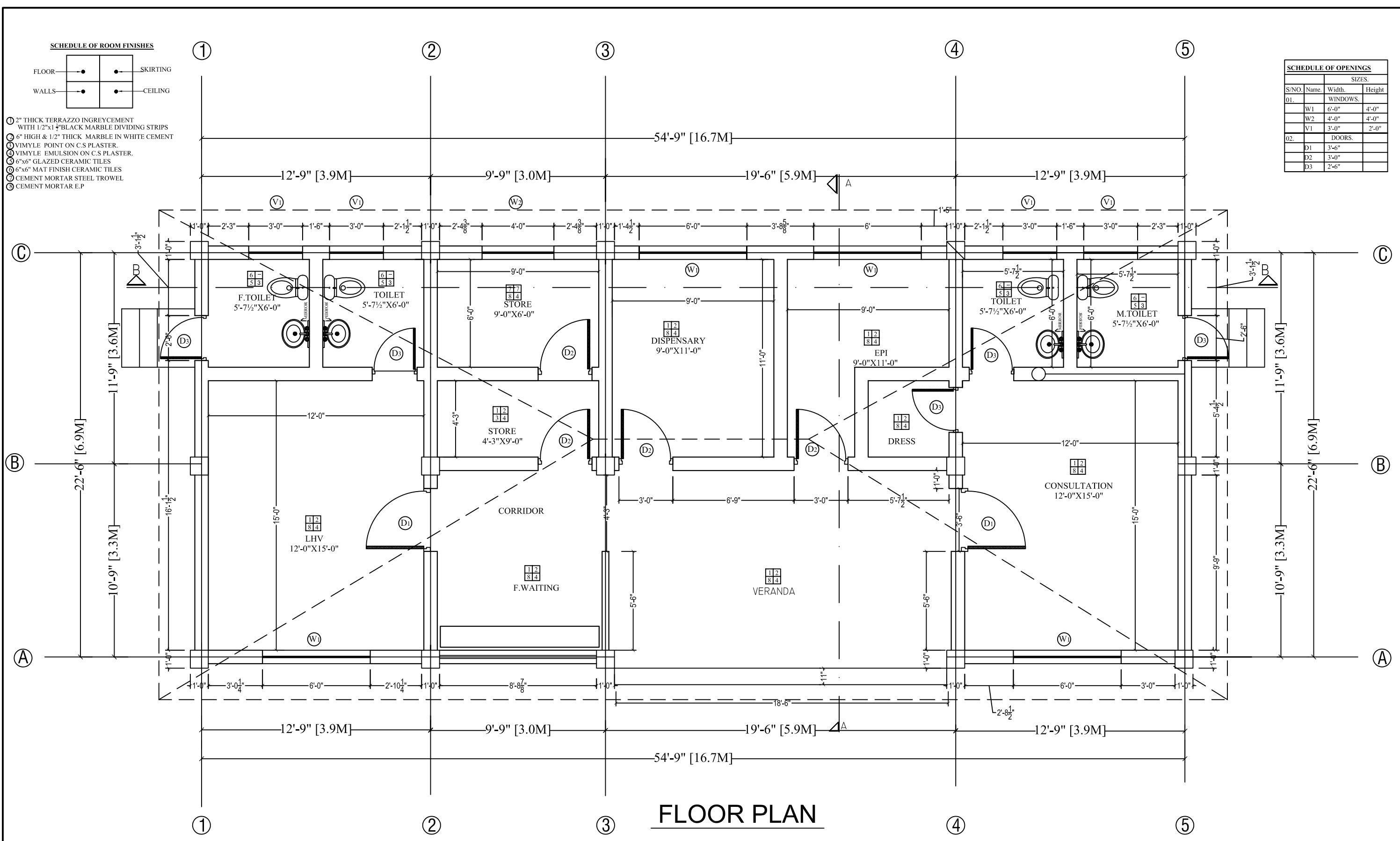
SCHEDULE OF ROOM FINISHES

FLOOR	SKIRTING
WALLS	CEILING

- ① 2" THICK TERRAZZO INGREDIENT WITH 1/2"x1 1/4" BLACK MARBLE DIVIDING STRIPS
- ② 6" HIGH & 1/2" THICK MARBLE IN WHITE CEMENT
- ③ VINYLE POINT ON C.S PLASTER.
- ④ VINYLE EMULSION ON C.S PLASTER.
- ⑤ 6"x6" GLAZED CERAMIC TILES
- ⑥ 6"x6" MAT FINISH CERAMIC TILES
- ⑦ CEMENT MORTAR STEEL TROWEL
- ⑧ CEMENT MORTAR E.P.

SCHEDULE OF OPENINGS

SIZES.			
S/NO.	Name.	Width.	Height
01.	WINDOWS.	W1	6'-0"
		W2	4'-0"
		V1	3'-0"
02.	DOORS.	D1	3'-6"
		D2	3'-0"
		D3	2'-6"



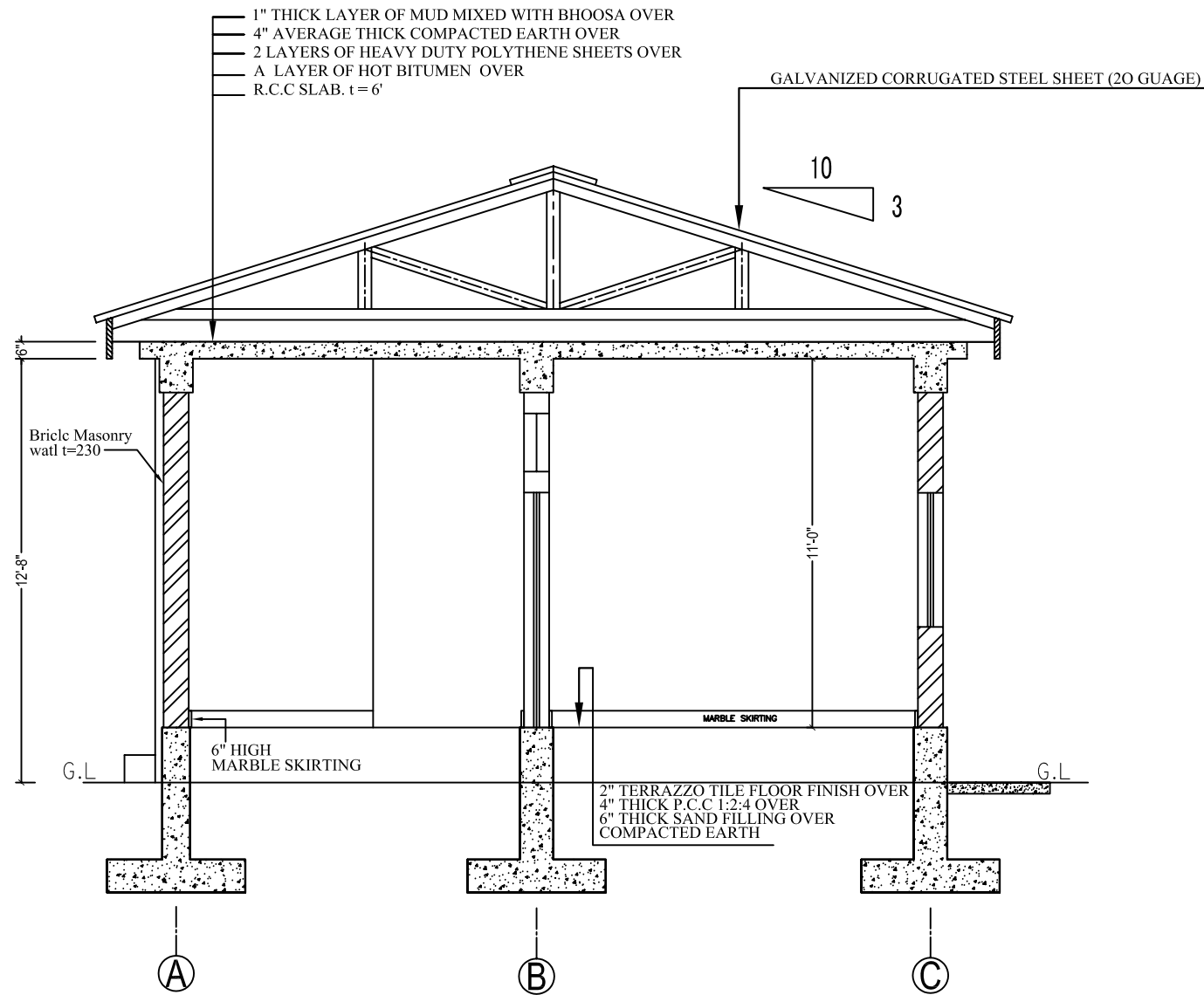
FLOOR PLAN

JAPAN INTERNATIONAL COOPERATION AGENCY

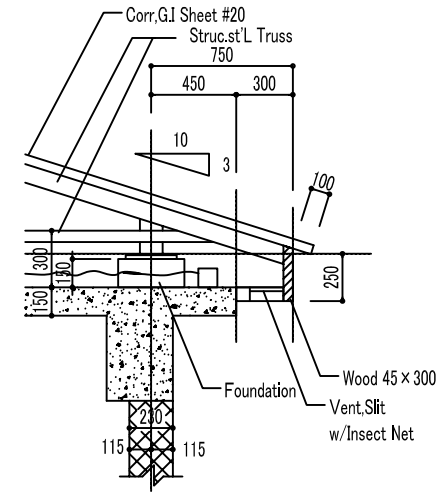
NOTE:

**CIVIL HOSPITAL(CH)
THAKOT**

THE OUTLINE DESIGN STUDY ON THE PROJECT FOR THE RECONSTRUCTION OF THE EARTHQUAKE FACILITIES						
NIPPON KOEI CO., LTD IN ASSOCIATION WITH BINKO INTERNATIONAL				CIVIL HOSPITAL (CH) THAKOT - O.P.D		
PREPARED BY		CHECKED BY		APPROVED BY		
NAME		M.KASHIF		A. MORIOKA		Y.INOUE
SIGNATURE		/ /2006		/ /2006		/ /2006
DATE		/ /2006		/ /2006		/ /2006
SCALE			SHEET NO.		REV. NO.	
1:60			A-3			



SECTION A-A



TYPICAL EAVES DETAILS

S 1:40



JAPAN INTERNATIONAL COOPERATION AGENCY

NOTE:

**CIVIL HOSPITAL(CH)
 THAKOT**

THE OUTLINE DESIGN STUDY ON THE PROJECT FOR THE RECONSTRUCTION OF THE EARTHQUAKE FACILITIES

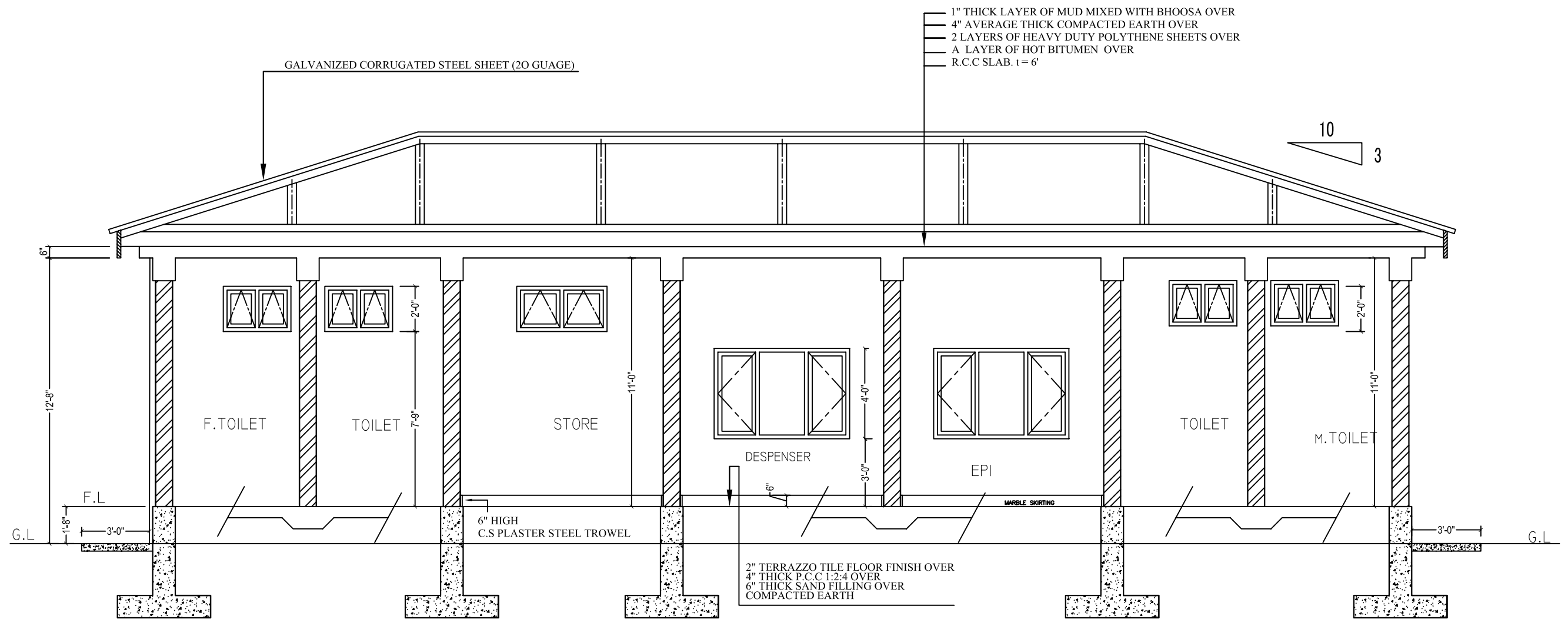
NIPPON KOEI CO., LTD IN ASSOCIATION WITH
 BINKO INTERNATIONAL

CIVIL HOSPITAL (CH) THAKOT - O.P.D

SECTION A-A

	PREPARED BY	CHECKED BY	APPROVED BY
NAME	M.KASHIF	A. MORIOKA	Y.INOUE
SIGNATURE			
DATE	/ /2006	/ /2006	/ /2006

SCALE	SHEET NO.	REV. NO.
1:60	A-4	



SECTION B-B



JAPAN INTERNATIONAL COOPERATION AGENCY

NOTE:

**CIVIL HOSPITAL(CH)
THAKOT**

THE OUTLINE DESIGN STUDY ON THE PROJECT FOR THE RECONSTRUCTION OF THE EARTHQUAKE FACILITIES

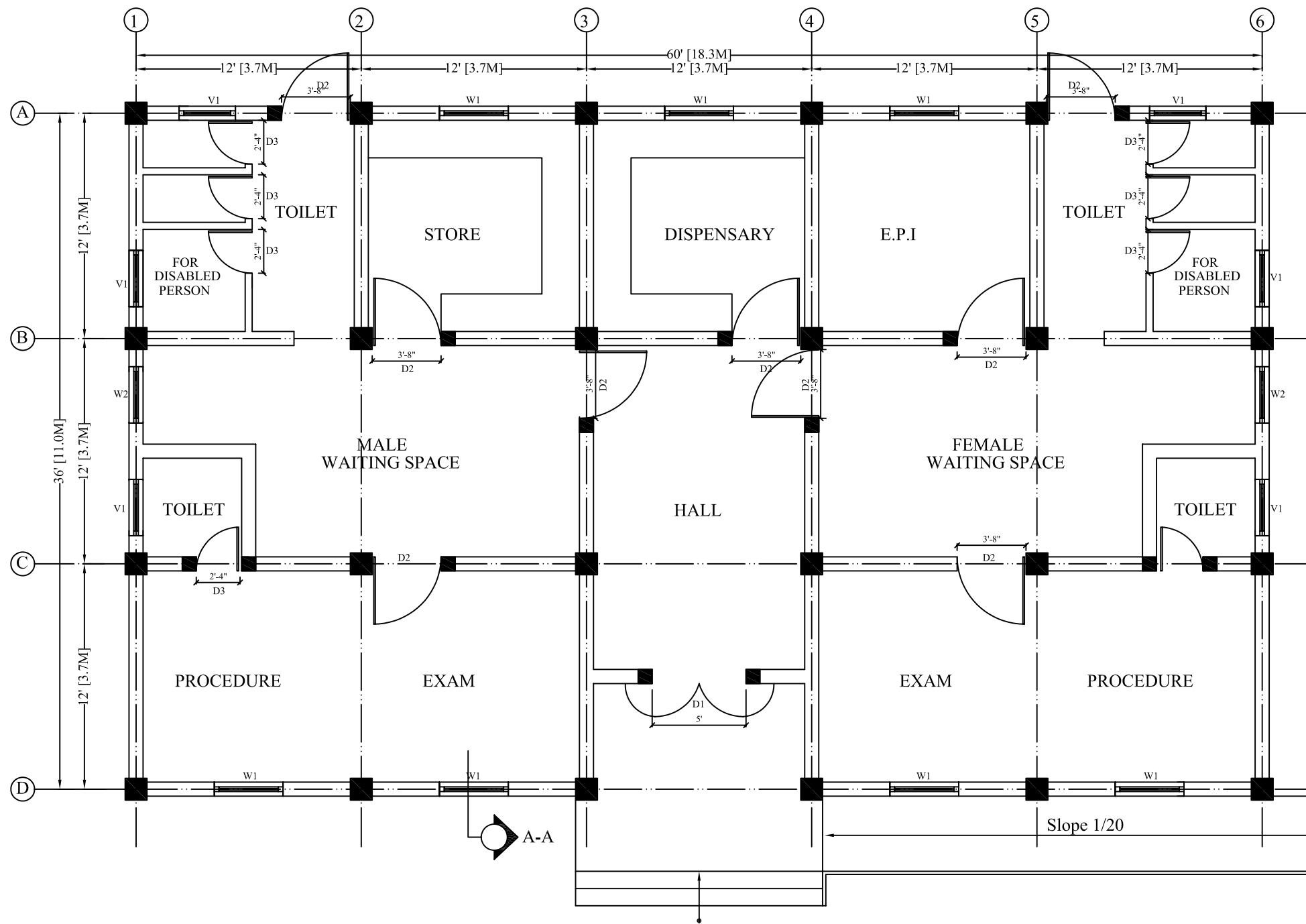
NIPPON KOEI CO., LTD IN ASSOCIATION WITH
BINKO INTERNATIONAL

CIVIL HOSPITAL (CH) THAKOT - O.P.D

SECTION B-B

	PREPARED BY	CHECKED BY	APPROVED BY
NAME	M.KASHIF	A. MORIOKA	Y.INOUE
SIGNATURE			
DATE	/ /2006	/ /2006	/ /2006

SCALE	SHEET NO.	REV. NO.
1:60	A-5	



PLAN

NOTE:

DESIGNING PROTOTYPE BASIC HEALTH UNIT

THE OUTLINE DESIGN STUDY ON THE PROJECT FOR THE RECONSTRUCTION OF THE EARTHQUAKE FACILITIES

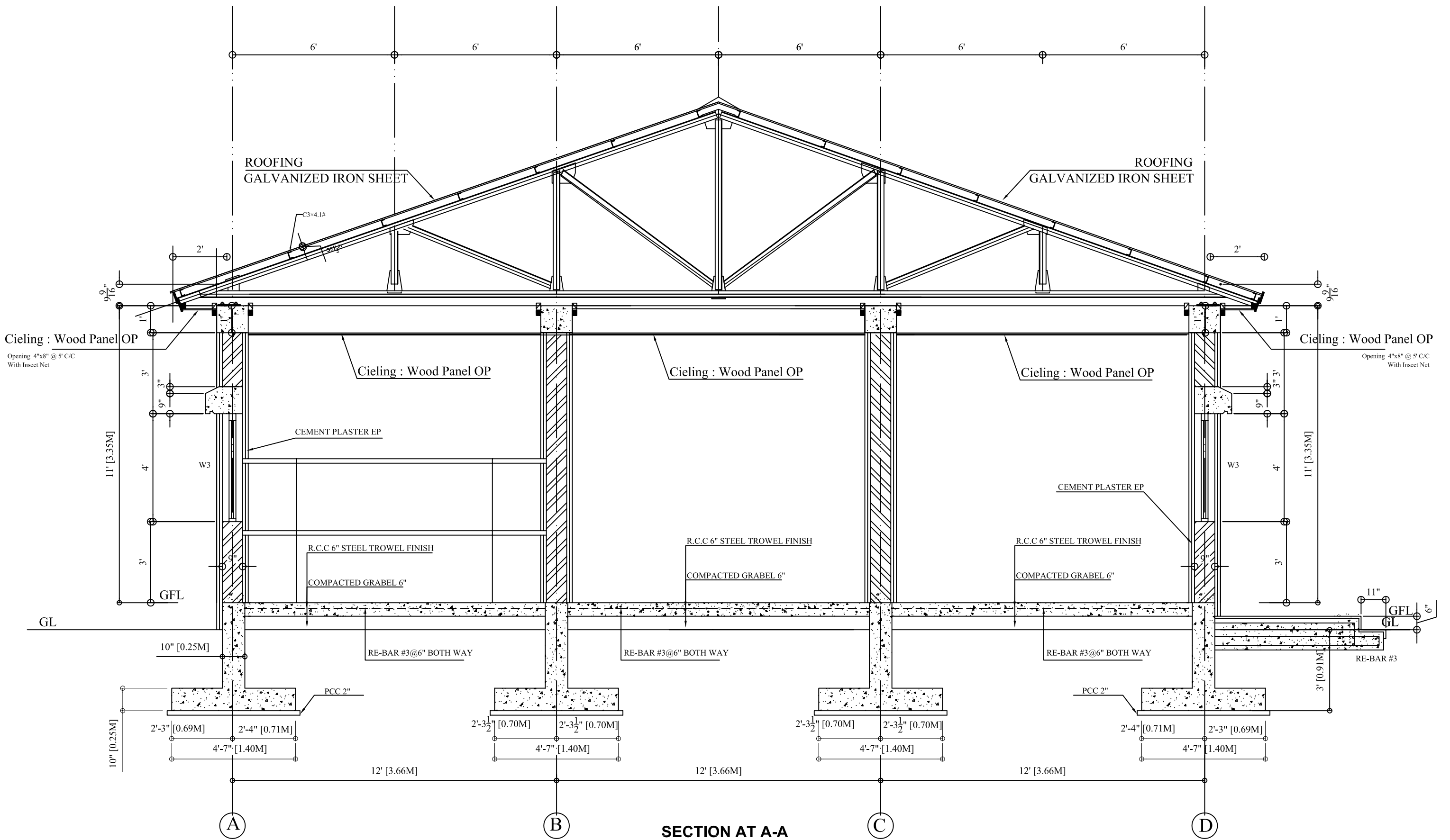
NIPPON KOEI CO., LTD IN ASSOCIATION WITH
BINKO INTERNATIONAL

DRAWING TITLE

PLAN (12G5S)

	PREPARED BY	CHECKED BY	APPROVED BY
NAME	AASIF		
SIGNATURE			
DATE	MAY.25,2006	/ /2006	/ /2006

SCALE	SHEET NO.	REV. NO.
	03	



SECTION AT A-A

NOTE:

DESIGNING PROTOTYPE BASIC HEALTH UNIT

THE OUTLINE DESIGN STUDY ON THE PROJECT FOR THE RECONSTRUCTION OF THE EARTHQUAKE FACILITIES

FEB.21,2006

**NIPPON KOEI CO., LTD IN ASSOCIATION WITH
BINKO INTERNATIONAL**

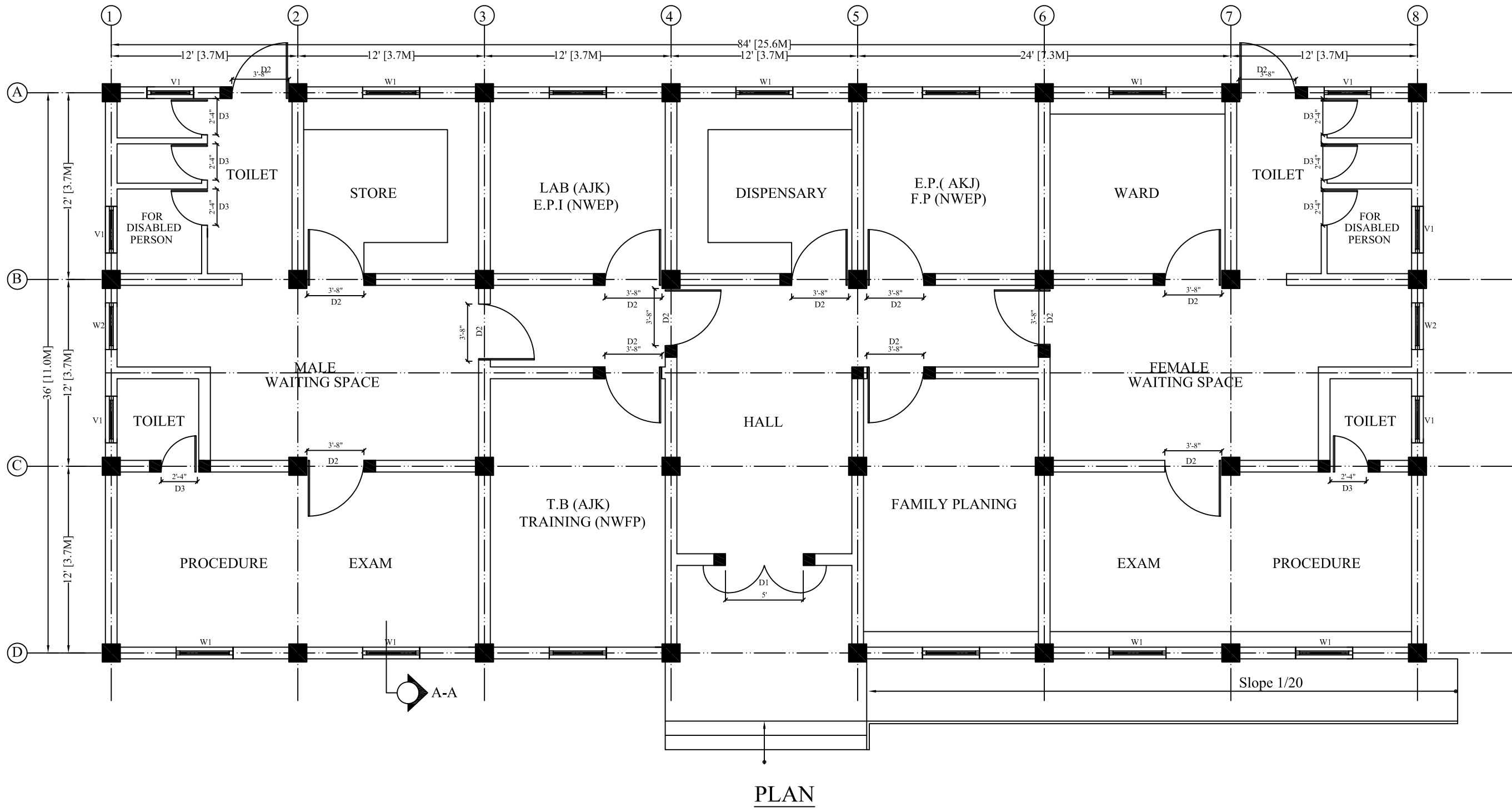
DRAWING TITLE

SECTION A-A (12G5S)

JAPAN INTERNATIONAL COOPERATION AGENCY

	PREPARED BY	CHECKED BY	APPROVED BY
NAME	AASIF		
SIGNATURE			
DATE	MAY.25,2006	/ /2006	/ /2006

SCALE	SHEET NO.	REV. NO.
	05	

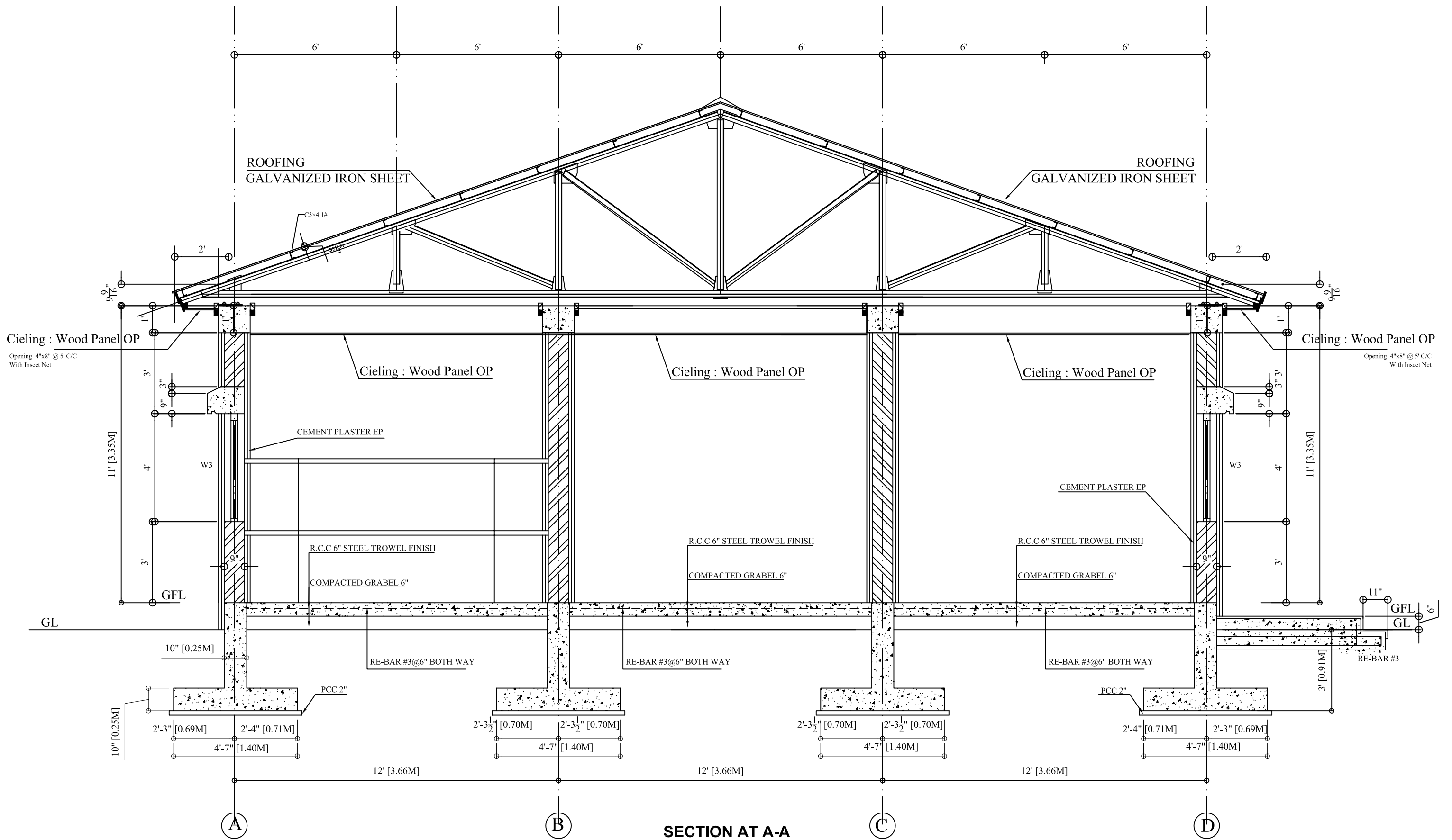


PLAN

NOTE:

DESIGNING PROTOTYPE BASIC HEALTH UNIT

THE OUTLINE DESIGN STUDY ON THE PROJECT FOR THE RECONSTRUCTION OF THE EARTHQUAKE FACILITIES					
NIPPON KOEI CO., LTD IN ASSOCIATION WITH BINKO INTERNATIONAL				DRAWING TITLE	
				PLAN (12G7S)	
	PREPARED BY	CHECKED BY	APPROVED BY	SCALE	SHEET NO.
NAME	AASIF				03
SIGNATURE					
DATE	JUNE,03,2006	/ /2006	/ /2006		
				REV. NO.	



SECTION AT A-A

NOTE:

DESIGNING PROTOTYPE BASIC HEALTH UNIT

THE OUTLINE DESIGN STUDY ON THE PROJECT FOR THE RECONSTRUCTION OF THE EARTHQUAKE FACILITIES

FEB.21,2006

**NIPPON KOEI CO., LTD IN ASSOCIATION WITH
BINKO INTERNATIONAL**

DRAWING TITLE

SECTION A-A (12G7S)

JAPAN INTERNATIONAL COOPERATION AGENCY

	PREPARED BY	CHECKED BY	APPROVED BY
NAME	AASIF		
SIGNATURE			
DATE	JUNE,03,2006	/ /2006	/ /2006

SCALE	SHEET NO.	REV. NO.
	05	