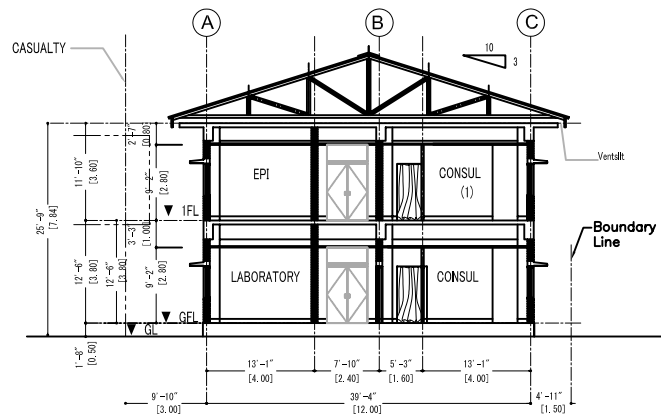
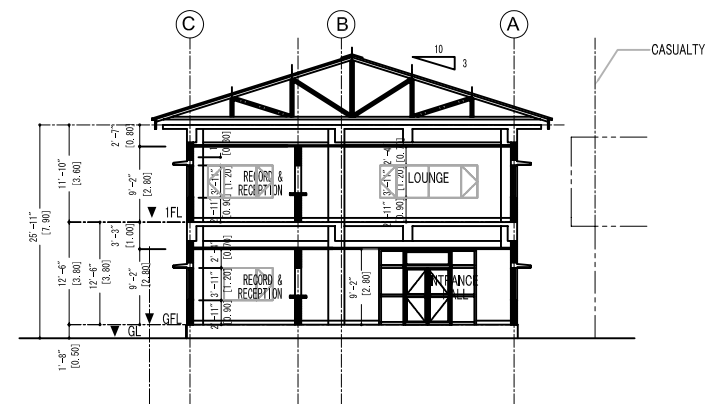


SECTION A-A



SECTION B-B



SECTION C-C

JICA
JAPAN INTERNATIONAL COOPERATION AGENCY

NOTE

DISTRICT HEADQUARTERS
HOSPITAL (DHQ)
BATTAGRAM

THE OUTLINE DESIGN STUDY ON THE PROJECT FOR THE RECONSTRUCTION OF THE EARTHQUAKE AFFECTED FACILITIES

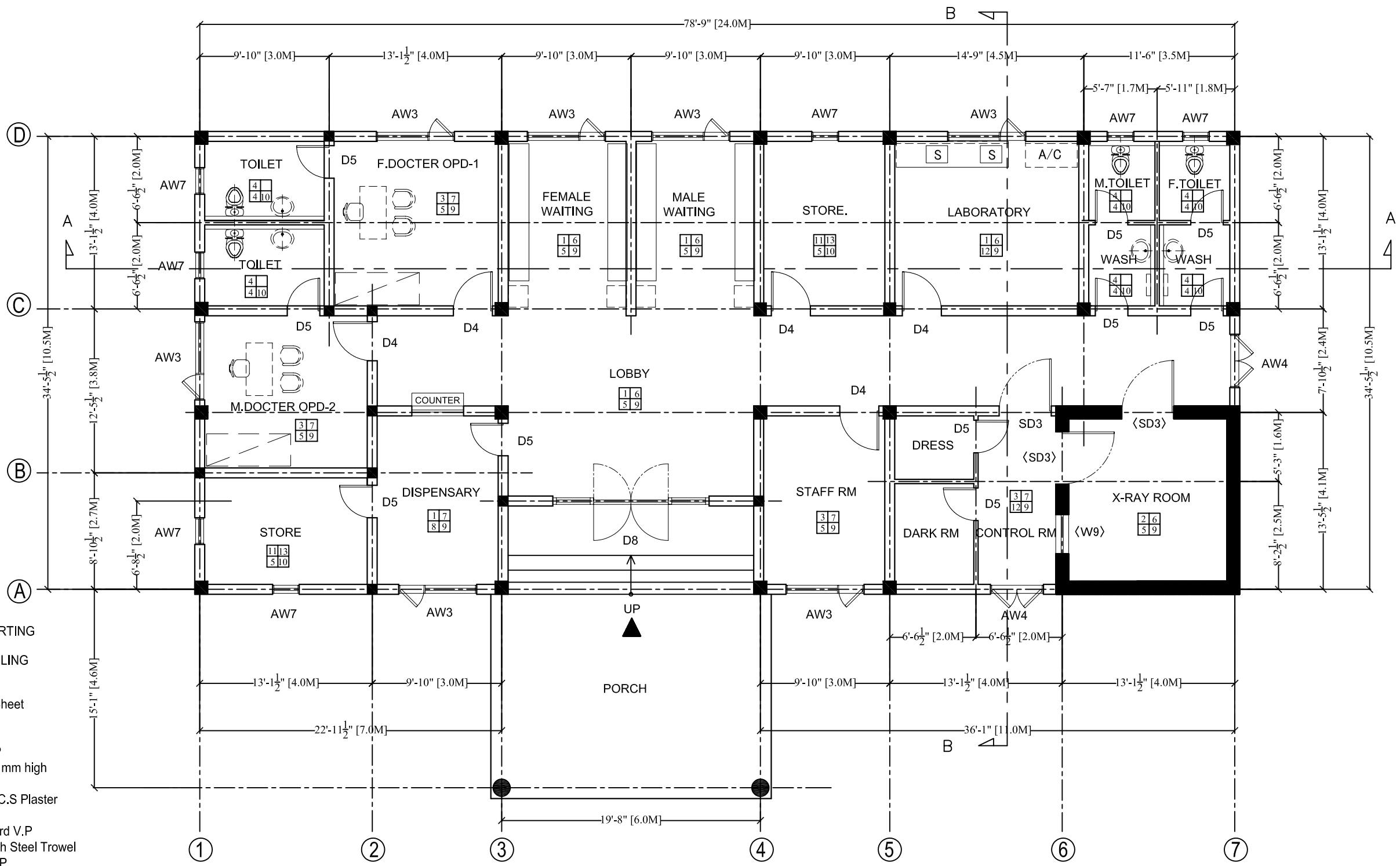
NIPPON KOEI CO., LTD IN ASSOCIATION WITH
BINKO INTERNATIONAL

DWG. TITLE: DHQ-O.P.D

SECTIONS

	PREPARED BY	CHECKED BY	APPROVED BY
NAME	M.KASHIF	A. MORIOKA	Y.INOUE
SIGNATURE			
DATE	/ /2006	/ /2006	/ /2006

SCALE	SHEET NO.	REV. NO.
1:200	A-12	



- FLOOR
- WALLS
- 1- Terrazzo block
 - 2- Composit Rubber Sheet
 - 3- Plastic Tile
 - 4- Ceramic Tile
 - 5- Cement Plaster E.P
 - 6- Terrazzo block 150 mm high
 - 7- Deodar Wood
 - 8- Vinyl Emulsion on C.S Plaster
 - 9- Acoustical Tile
 - 10- Cement Fiber Board V.P
 - 11- Cement Mortar with Steel Trowel
 - 12- Cement Plaster V.P
 - 13- Cement Mortar Skirting 150mm high



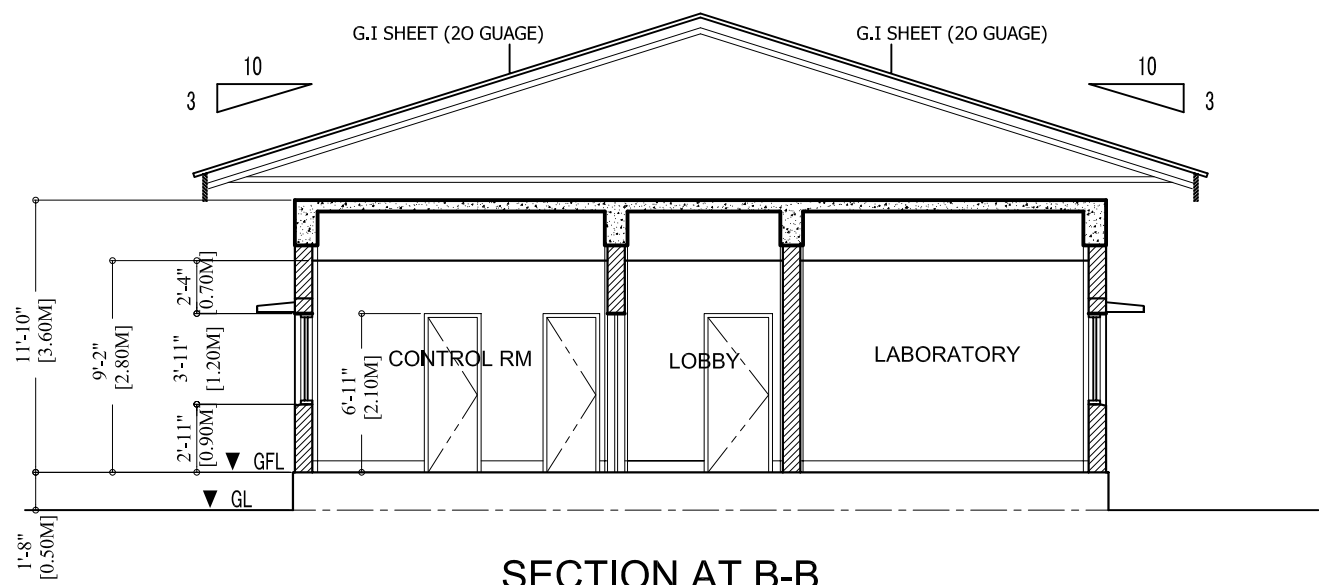
NOTE:

**DISTRICT HEADQUARTERS
HOSPITAL(DHQ)
BATTAGRAM**

THE OUTLINE DESIGN STUDY ON THE PROJECT FOR THE RECONSTRUCTION OF THE EARTHQUAKE AFFECTED FACILITIES					
NIPPON KOEI CO., LTD IN ASSOCIATION WITH BINKO INTERNATIONAL				DWG. TITLE: DHQ - T.B CENTER	
FLOOR PLAN					
PREPARED BY	CHECKED BY	APPROVED BY		SCALE	SHEET NO.
NAME	M.KASHIF	A. MORIOKA	Y.INOUE	1:100	A-2
SIGNATURE					REV. NO.
DATE	/ /2006	/ /2006	/ /2006		



SECTION AT A-A



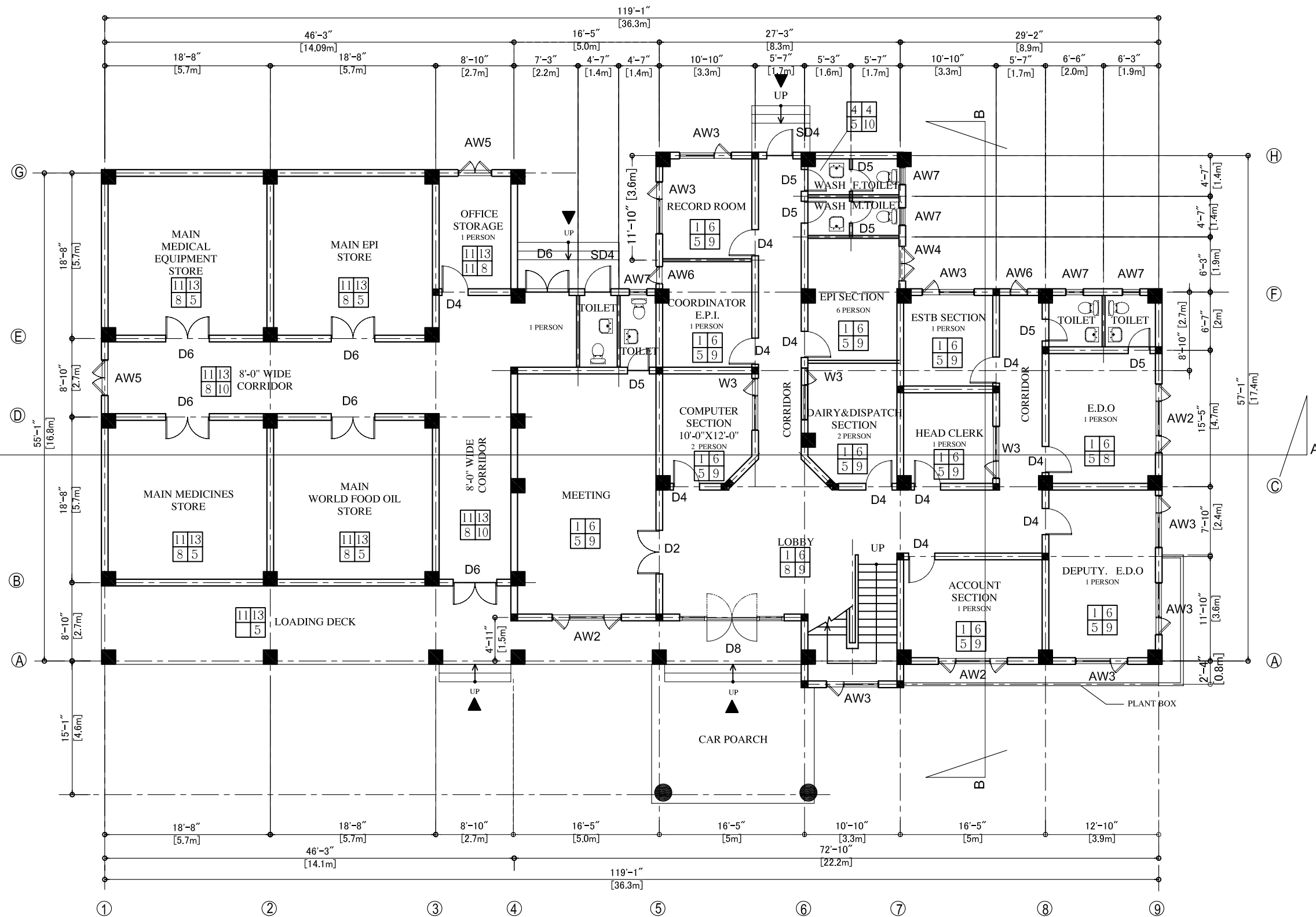
SECTION AT B-B



NOTE:
**DISTRICT HEADQUARTERS
HOSPITAL(DHQ)
BATTAGRAM**

THE OUTLINE DESIGN STUDY ON THE PROJECT FOR THE RECONSTRUCTION OF THE EARTHQUAKE AFFECTED FACILITIES						
NIPPON KOEI CO., LTD IN ASSOCIATION WITH BINKO INTERNATIONAL				DWG. TITLE: DHQ - T.B CENTER		
	PREPARED BY	CHECKED BY	APPROVED BY	SECTIONS		
NAME	M.KASHIF	A. MORIOKA	Y.INOUE			
SIGNATURE						
DATE	/ /2006	/ /2006	/ /2006			
	SCALE	SHEET NO.	REV. NO.			
	1:100	A- 4				

- FLOOR — SKIRTING
WALLS — CEILING
- 1- Terrazzo block
 - 2- Composit Rubber Sheet
 - 3- Plastic Tile
 - 4- Ceramic Tile
 - 5- Cement Plaster E.P
 - 6- Terrazzo block 150 mm high
 - 7- Deodar Wood
 - 8- Vinyl Emulsion on C.S Plaster
 - 9- Acoustical Tile
 - 10- Cement Fiber Board V.P
 - 11- Cement Mortar with Steel Trowel
 - 12- Cement Plaster V.P
 - 13- Cement Mortar Skirting 150mm high



GROUND FLOOR PLAN
S=1:150

NOTE:

**DISTRICT HEADQUARTERS
HOSPITAL(DHQ)
BATTAGRAM**

THE OUTLINE DESIGN STUDY ON THE PROJECT FOR THE RECONSTRUCTION OF THE EARTHQUAKE AFFECTED FACILITIES

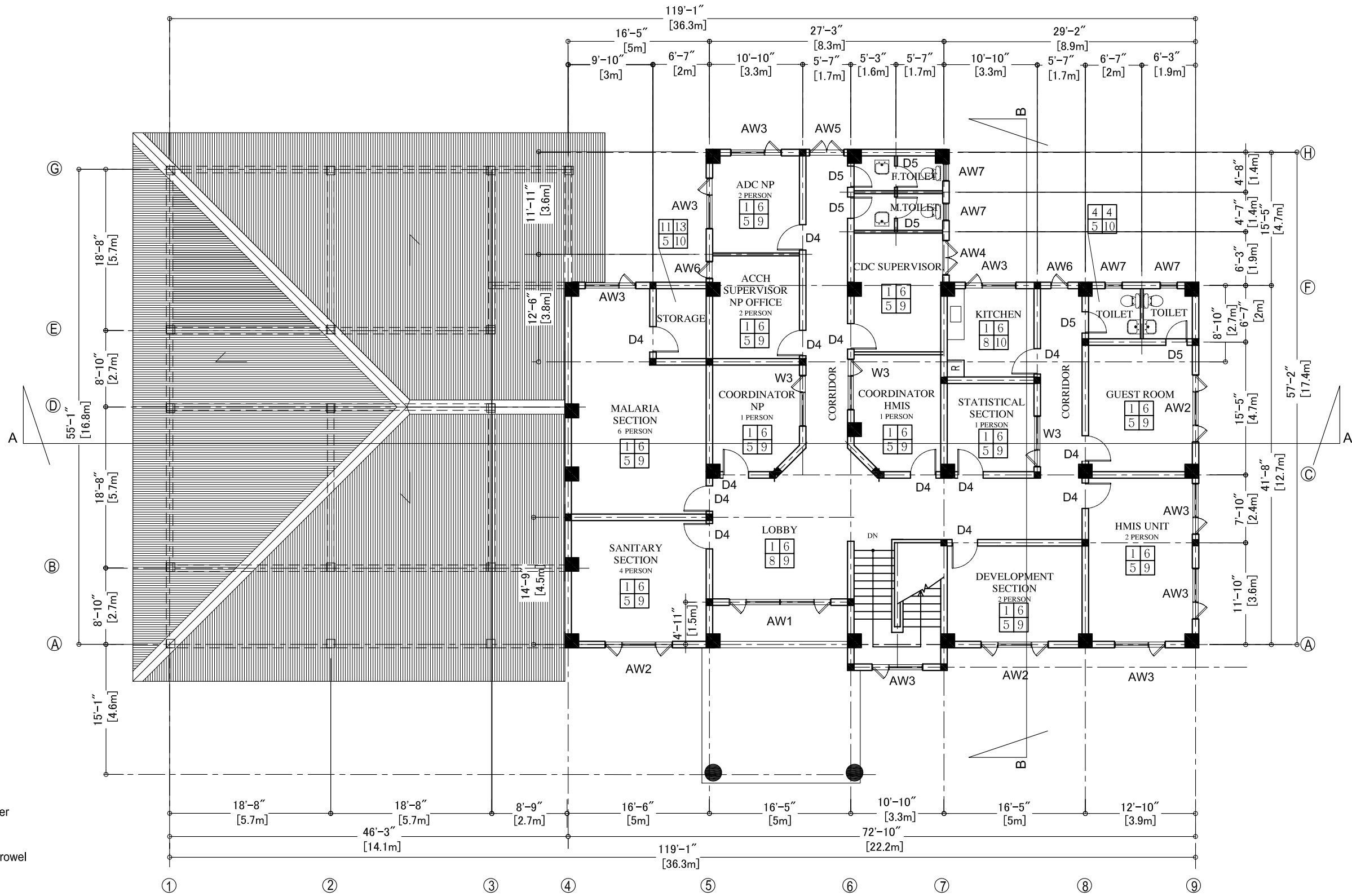
NIPPON KOEI CO., LTD IN ASSOCIATION WITH
BINKO INTERNATIONAL

DWG. TITLE: DHQ - E.D.O OFFICE

GROUND FLOOR PLAN

	PREPARED BY	CHECKED BY	APPROVED BY
NAME	M.KASHIF	A. MORIOKA	Y.INOUE
SIGNATURE			
DATE	/ /2006	/ /2006	/ /2006

SCALE	SHEET NO.	REV. NO.
1:150	A-3	



- FLOOR SKIRTING
WALLS CEILING
- 1- Terrazzo block
 - 2- Composit Rubber Sheet
 - 3- Plastic Tile
 - 4- Ceramic Tile
 - 5- Cement Plaster E.P
 - 6- Terrazzo block 150 mm high
 - 7- Deodar Wood
 - 8- Vinyl Emulsion on C.S Plaster
 - 9- Acoustical Tile
 - 10- Cement Fiber Board V.P
 - 11- Cement Mortar with Steel Trowel
 - 12- Cement Plaster V.P
 - 13- Cement Mortar Skirting 150mm high

1ST FLOOR PLAN
S=1:150

NOTE:

**DISTRICT HEADQUARTERS
HOSPITAL(DHQ)
BATTAGRAM**

THE OUTLINE DESIGN STUDY ON THE PROJECT FOR THE RECONSTRUCTION OF THE EARTHQUAKE AFFECTED FACILITIES

**NIPPON KOEI CO., LTD IN ASSOCIATION WITH
BINKO INTERNATIONAL**

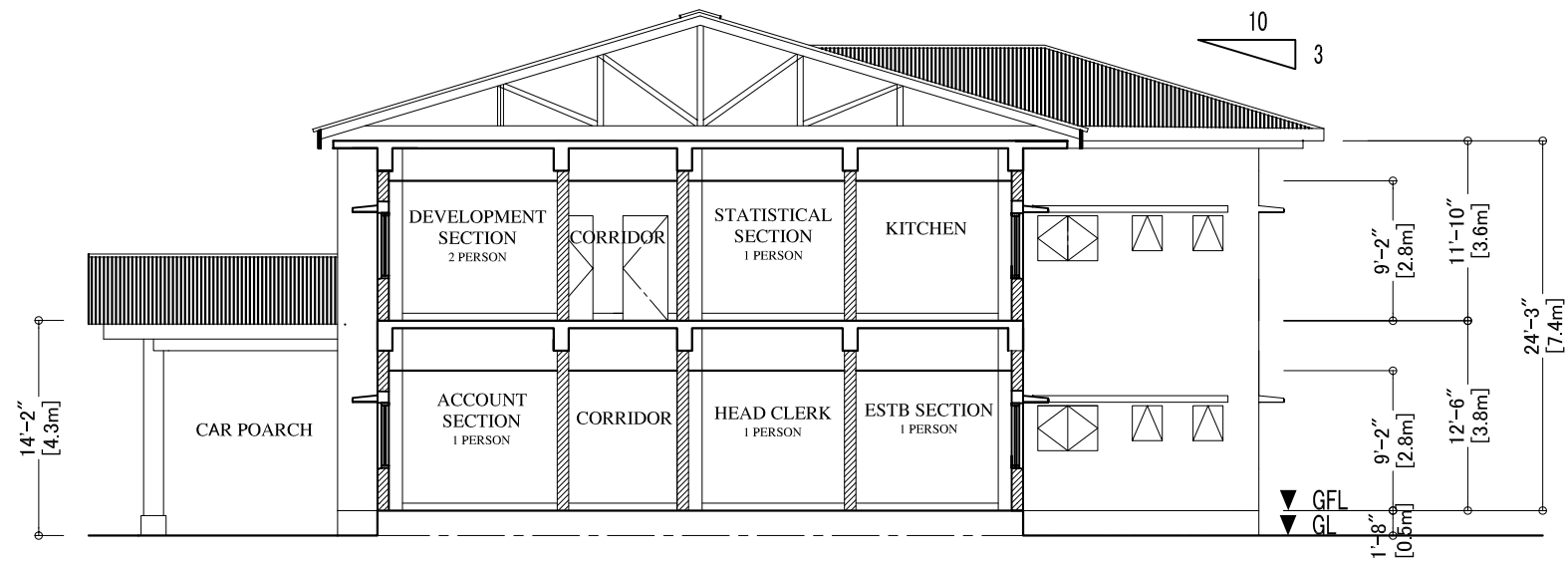
DWG. TITLE: DHQ - E.D.O OFFICE

1ST FLOOR PLAN

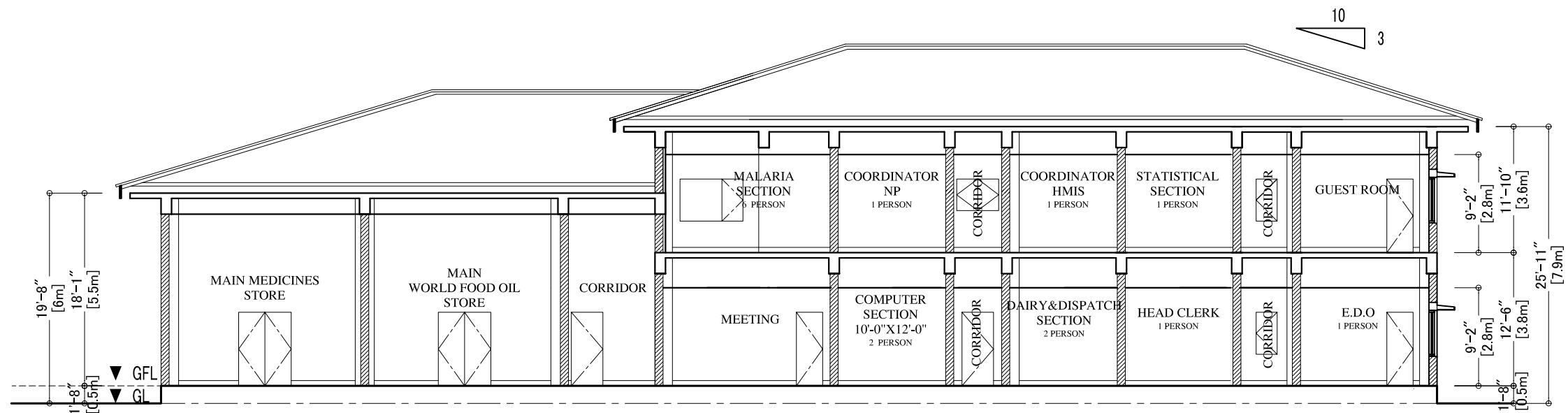
	PREPARED BY	CHECKED BY	APPROVED BY
NAME	M.KASHIF	A. MORIOKA	Y.INOUE
SIGNATURE			
DATE	/ /2006	/ /2006	/ /2006

SCALE	SHEET NO.	REV. NO.
1:150	A-4	





SECTION AT B-B



SECTION AT A-A



JAPAN INTERNATIONAL COOPERATION AGENCY

NOTE:

DISTRICT HEADQUARTERS
HOSPITAL(DHQ)
BATTAGRAM

THE OUTLINE DESIGN STUDY ON THE PROJECT FOR THE RECONSTRUCTION OF THE EARTHQUAKE - AFFECTED FACILITIES

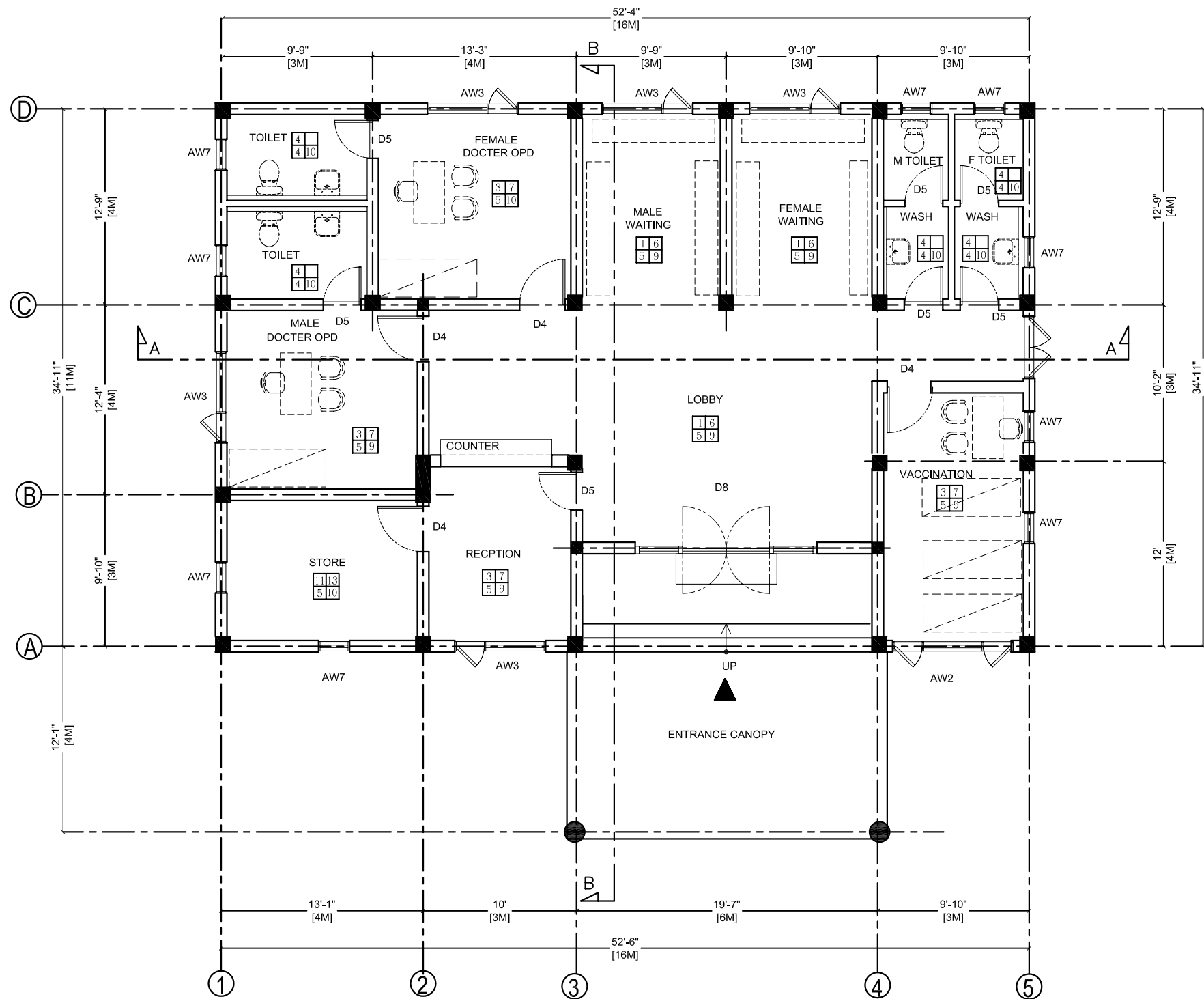
NIPPON KOEI CO., LTD IN ASSOCIATION WITH
BINKO INTERNATIONAL

DWG. TITLE: DHQ - E.D.O OFFICE

	PREPARED BY	CHECKED BY	APPROVED BY
NAME	M.KASHIF	A. MORIOKA	Y.INOUE
SIGNATURE			
DATE	/ /2006	/ /2006	/ /2006

SECTIONS

SCALE	SHEET NO.	REV. NO.
1:150	A-7	



FLOOR PLAN
S=1:100

- FLOOR ——— Skirting
WALLS ——— CEILING
- 1- Terrazzo block
 - 2- Composit Rubber Sheet
 - 3- Plastic Tile
 - 4- Ceramic Tile
 - 5- Cement Plaster E.P
 - 6- Terrazzo block 150 mm high
 - 7- Deodar Wood
 - 8- Vinyl Emulsion on C.S Plaster
 - 9- Acoustical Tile
 - 10- Cement Fiber Borard V.P
 - 11- Cement Mortar with Steel Trowel
 - 12- Cement Plaster V.P
 - 13- Cement Mortar Skirting 150mm high

NOTE:

DISTRICT HEADQUARTERS
HOSPITAL (DHQ)
BATTAGRAM

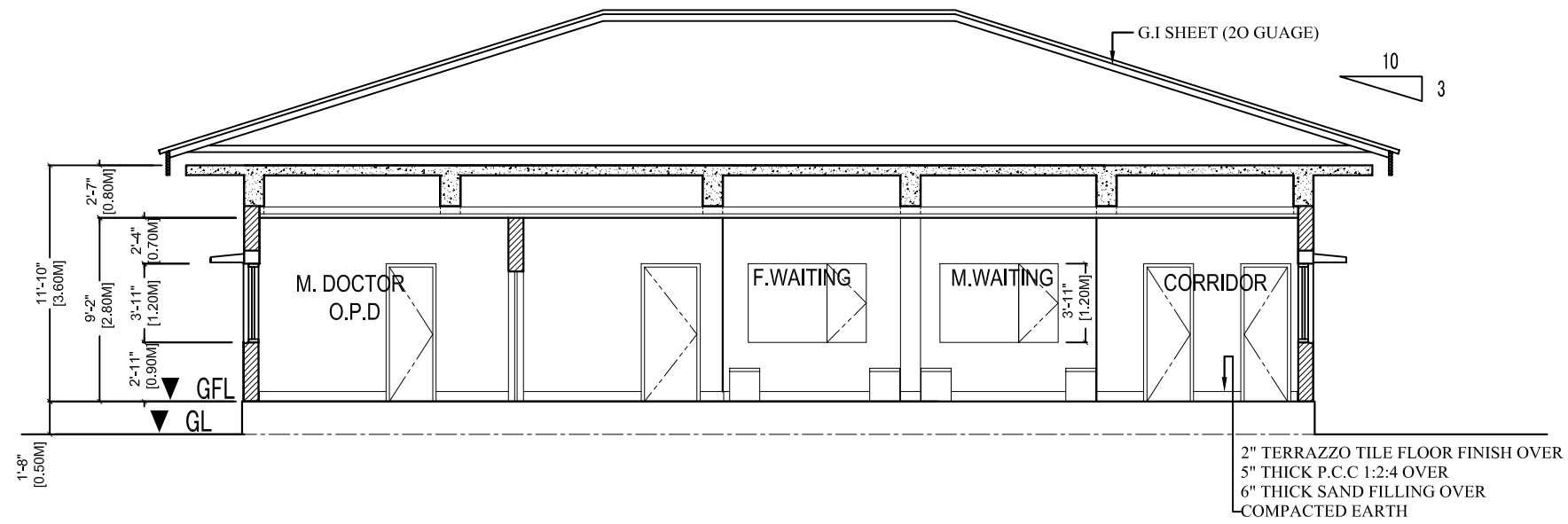
THE OUTLINE DESIGN STUDY ON THE PROJECT FOR THE RECONSTRUCTION OF THE EARTHQUAKE AFFECTED FACILITIES

NIPPON KOEI CO., LTD IN ASSOCIATION WITH
BINKO INTERNATIONAL

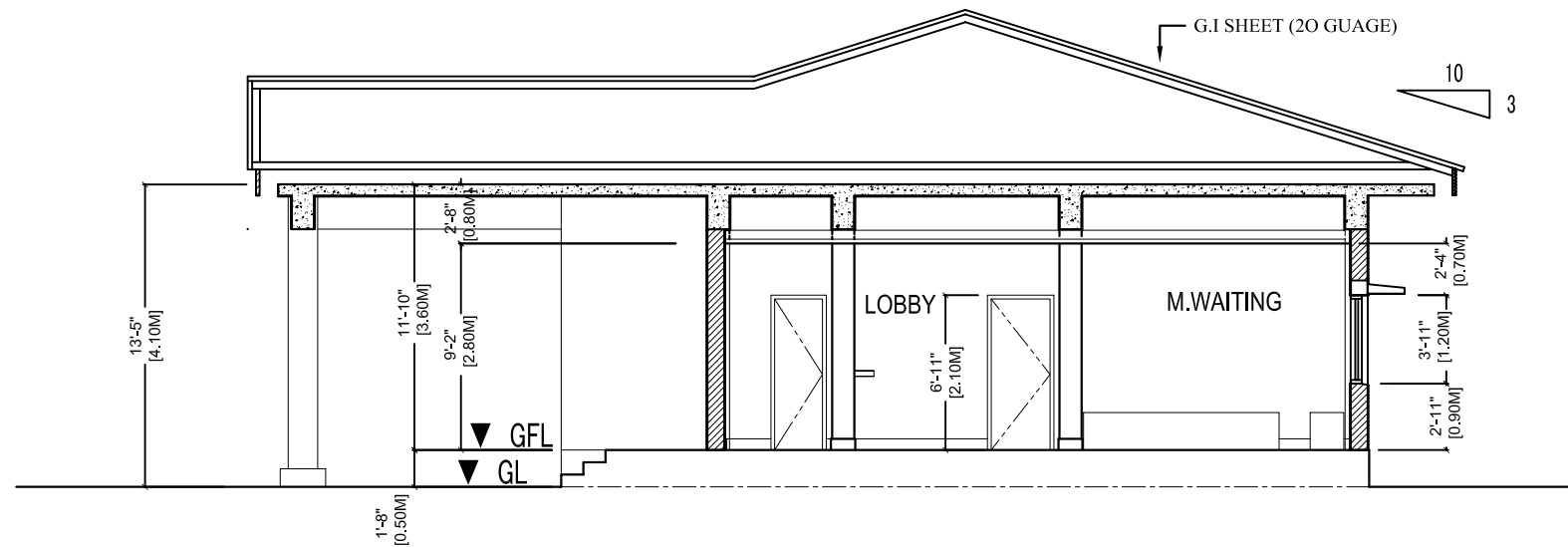
DWG. TITLE: DHQ - MCHC

	PREPARED BY	CHECKED BY	APPROVED BY
NAME	M.KASHIF	A. MORIOKA	Y.INOUE
SIGNATURE			
DATE	/ /2006	/ /2006	/ /2006

FLOOR PLAN		
SCALE	SHEET NO.	REV. NO.
1:100	A-2	



SECTION AT A-A



SECTION AT B-B

JICA
JAPAN INTERNATIONAL COOPERATION AGENCY

NOTE:

DISTRICT HEADQUARTERS
HOSPITAL (DHQ)
BATTAGRAM

THE OUTLINE DESIGN STUDY ON THE PROJECT FOR THE RECONSTRUCTION OF THE EARTHQUAKE AFFECTED FACILITIES

NIPPON KOEI CO., LTD IN ASSOCIATION WITH
BINKO INTERNATIONAL

DWG. TITLE: DHQ - MCHC

	PREPARED BY	CHECKED BY	APPROVED BY
NAME	M.KASHIF	A. MORIOKA	Y. INOUE
SIGNATURE			
DATE	/ /2006	/ /2006	/ /2006

SECTION DETAIL

SCALE	SHEET NO.	REV. NO.
1:100	A-3	