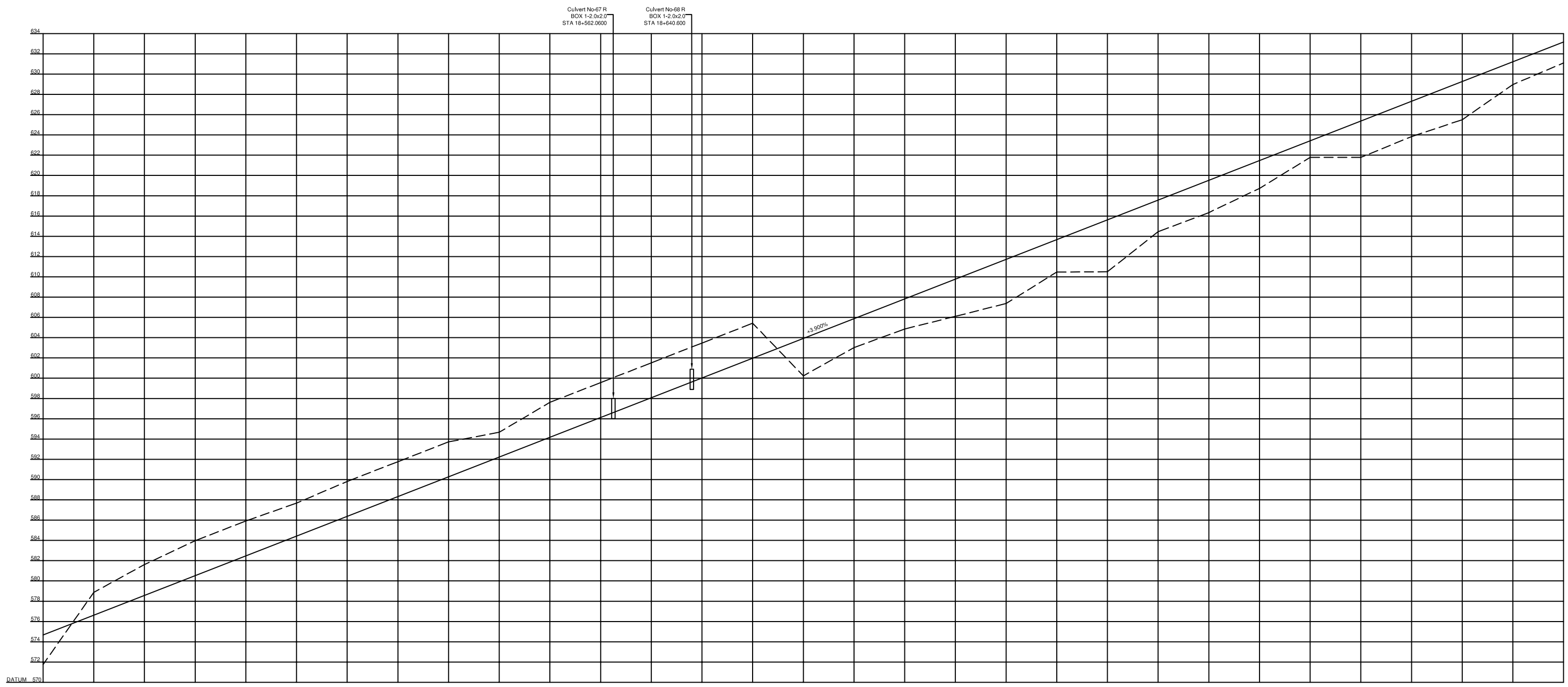


PROJECT NAME	CLIENTS	CONSULTANTS	DRAWING TITLE	SCALE	DWG NO
FEASIBILITY STUDY ON THE 2ND KOHAT TUNNEL AND ACCESS ROADS PROJECT	 GOVERNMENT OF PAKISTAN MINISTRY OF COMMUNICATIONS NATIONAL HIGHWAY AUTHORITY	 JAPAN INTERNATIONAL COOPERATION AGENCY	NIPPON KOEI CO., LTD AND ALMEC CORPORATION	PLAN 18+000 - 19+500	1:2,000 R-13



Culvert No-67 R  
BOX 1-2.0x2.0  
STA 18+562.000

Culvert No-68 R  
BOX 1-2.0x2.0  
STA 18+640.000

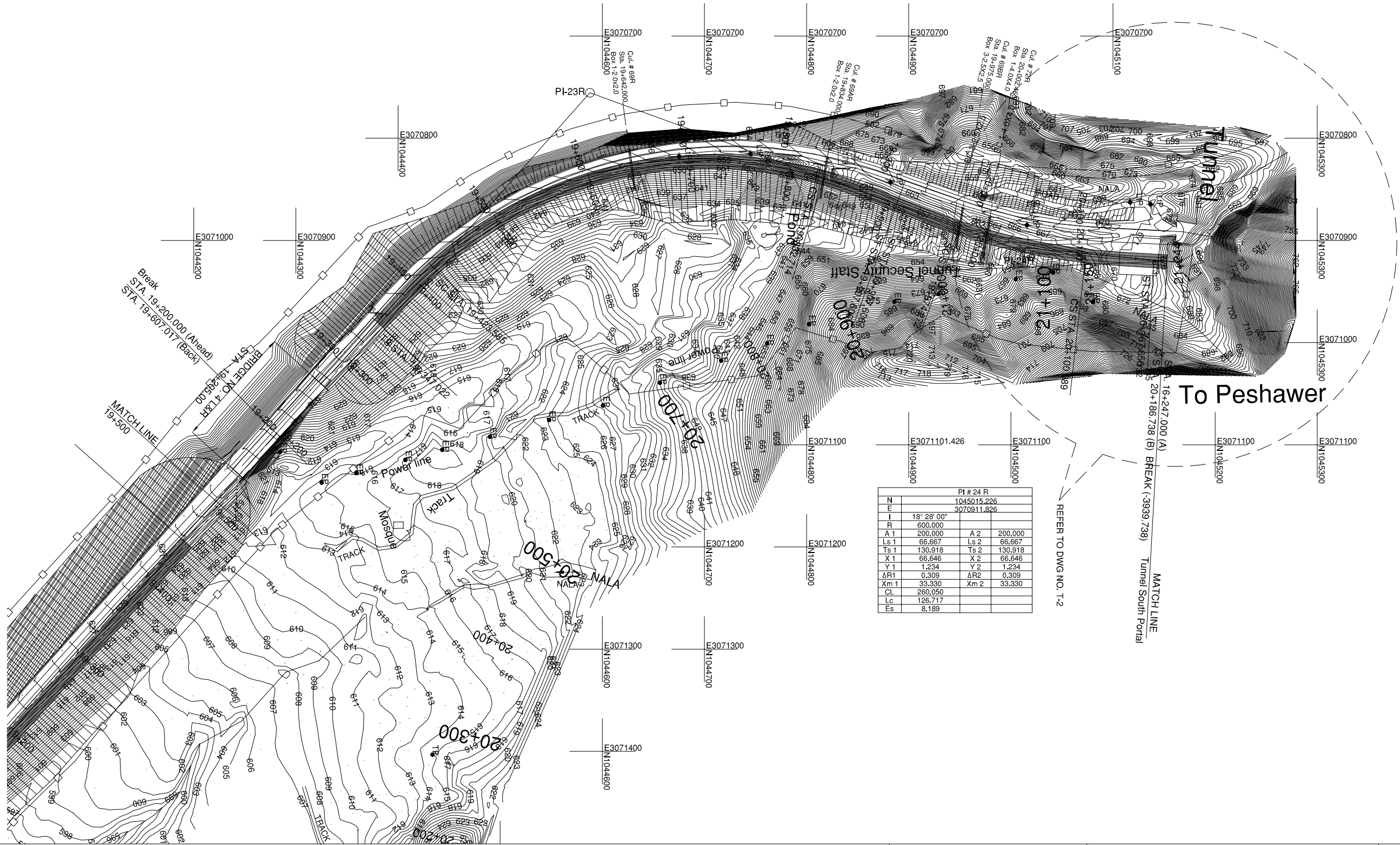
FINISHED ROAD ELEVATIONS	18+000	18+050	18+100	18+150	18+200	18+250	18+300	18+350	18+400	18+450	18+500	18+550	18+600	18+650	18+700	18+750	CS 18+782.302	18+800	18+850	ST 18+871.716	18+900	18+950	19+000	19+050	19+100	19+150	19+200	19+250	19+300	TS 19+347.022	19+350	19+400	SC 19+423.585	19+450	19+500					
EXISTING ROAD / GROUND ELEVATIONS	571.761	578.877	581.616	583.968	585.918	587.680	589.818	591.768	593.718	594.668	597.618	599.568	601.518	603.468	605.418	607.373	603.023	605.872	607.822	606.100	607.373	611.722	613.672	615.622	617.572	619.522	621.472	623.422	625.372	623.830	627.322	629.272	628.970	631.222	633.172					
CUMULATIVE DISTANCE (CD)	0	50	100	150	200	250	300	350	400	450	500	550	600	650	700	750	800	850	900	950	1000	1050	1100	1150	1200	1250	1300	1350	1400	1450	1500	1550	1600	1650	1700	1750	1800	1850	1900	1950
HORIZONTAL ALIGNMENT	R = 699															R = ∞										R = 400														
SUPPER GRADE ELEVATION % AGE	e = 5.8%															N.C.										e = -3.81%														

PROJECT NAME	CLIENTS	CONSULTANTS	DRAWING TITLE	SCALE	DWG NO
FEASIBILITY STUDY ON THE 2ND KOHAT TUNNEL AND ACCESS ROADS PROJECT	 GOVERNMENT OF PAKISTAN MINISTRY OF COMMUNICATIONS NATIONAL HIGHWAY AUTHORITY	 JAPAN INTERNATIONAL COOPERATION AGENCY	NIPPON KOEI CO., LTD AND ALMEC CORPORATION	PROFILE 18+000 - 19+500 H=1:2,000 V=1:200	R-13a

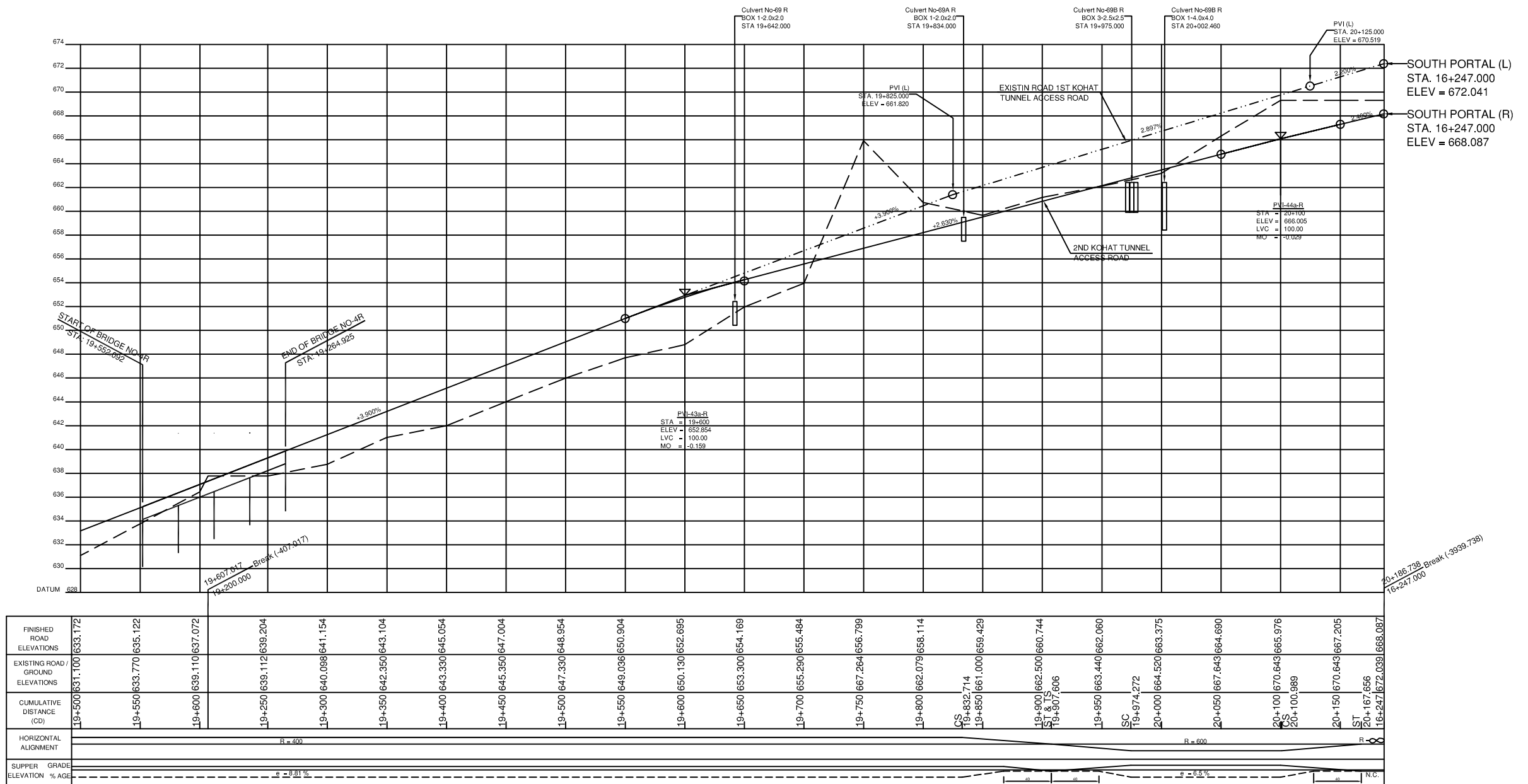


PI # 23			
23 R			
N	1044587.816		
E	3070755.473		
I	69° 27' 02"		
R	400.000		
A 1	175.000	A 2	175.000
Ls 1	76.563	Ls 2	76.563
Ts 1	315.899	Ts 2	315.899
X 1	76.492	X 2	76.492
Y 1	2.441	Y 2	2.441
ΔR1	0.610	ΔR2	0.610
Xm 1	38.270	Xm 2	38.270
CL	560.583		
Lc	409.129		
Es	87.408		

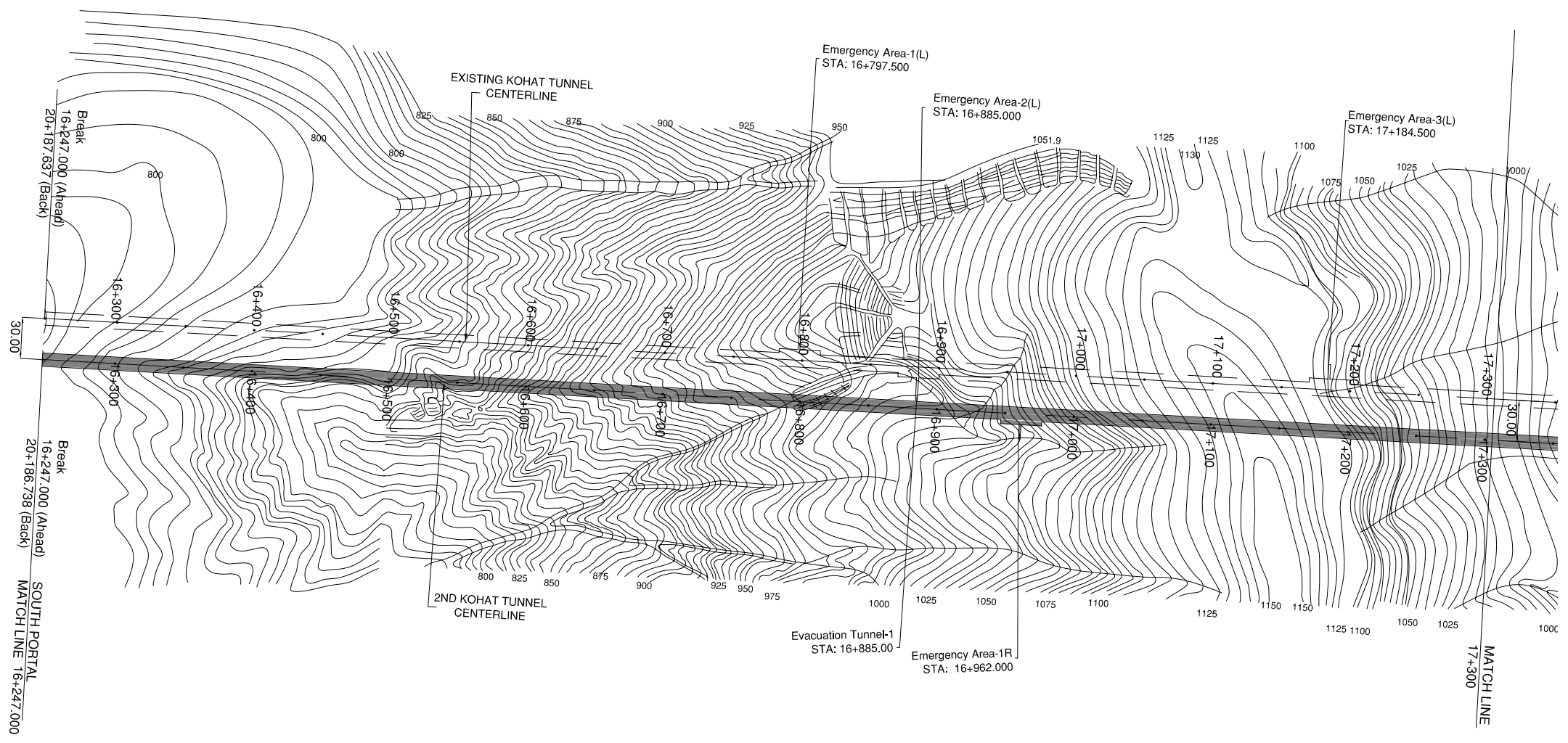
PI # 24 R			
N	1045015.226		
E	3070911.826		
I	18° 28' 00"		
R	600.000		
A 1	200.000	A 2	200.000
Ls 1	66.667	Ls 2	66.667
Ts 1	130.918	Ts 2	130.918
X 1	66.646	X 2	66.646
Y 1	1.234	Y 2	1.234
ΔR1	0.309	ΔR2	0.309
Xm 1	33.330	Xm 2	33.330
CL	260.050		
Lc	126.717		
Es	8.189		



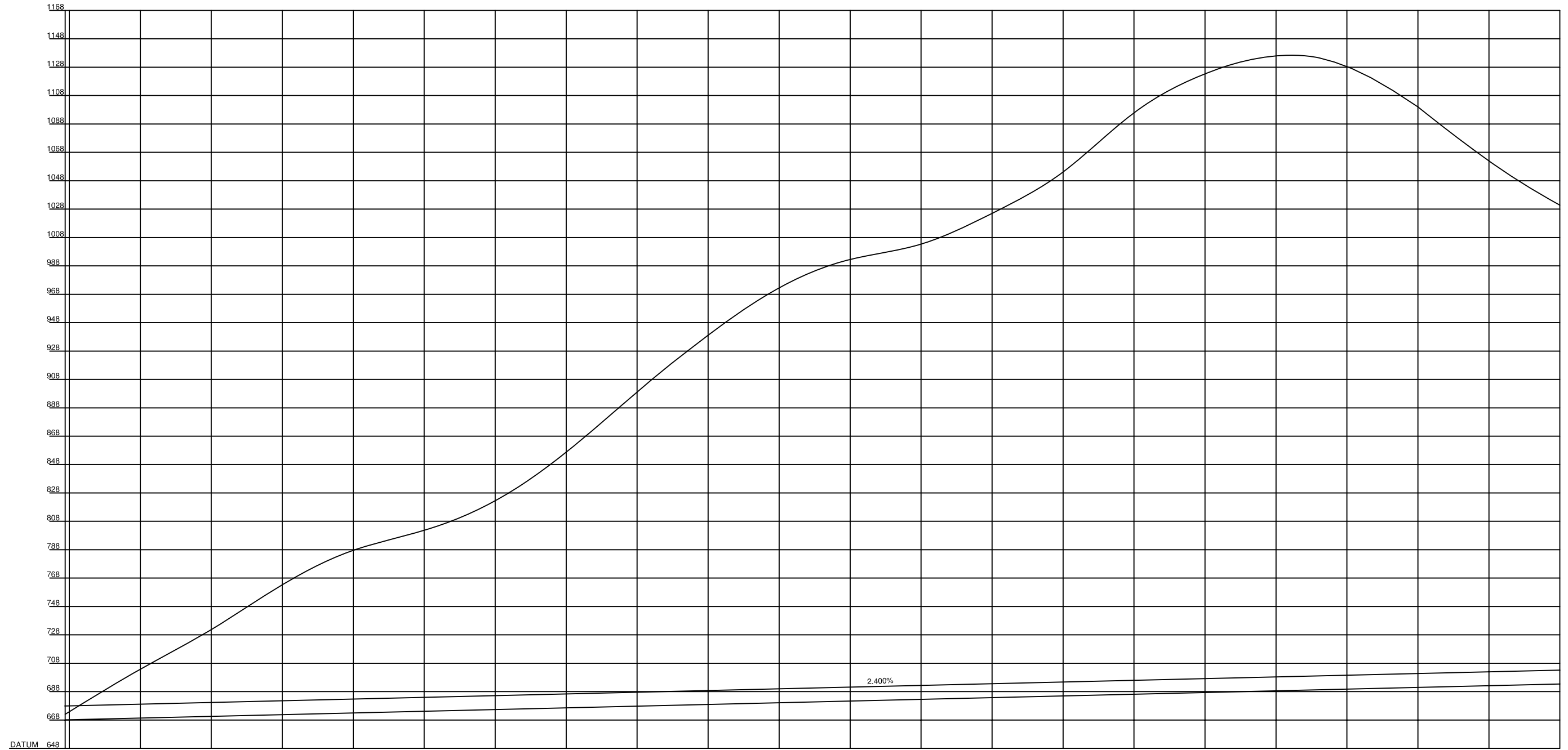
PROJECT NAME	CLIENTS	CONSULTANTS	DRAWING TITLE	SCALE	DWG NO
FEASIBILITY STUDY ON THE 2ND KOHAT TUNNEL AND ACCESS ROADS PROJECT	 GOVERNMENT OF PAKISTAN MINISTRY OF COMMUNICATIONS NATIONAL HIGHWAY AUTHORITY	 JAPAN INTERNATIONAL COOPERATION AGENCY	NIPPON KOEI CO., LTD AND ALMEC CORPORATION	PLAN 19+500 - 20+186.738	1:2,000 R-14



PROJECT NAME	CLIENTS	CONSULTANTS	DRAWING TITLE	SCALE	DWG NO
FEASIBILITY STUDY ON THE 2ND KOHAT TUNNEL AND ACCESS ROADS PROJECT	 GOVERNMENT OF PAKISTAN MINISTRY OF COMMUNICATIONS NATIONAL HIGHWAY AUTHORITY	 JAPAN INTERNATIONAL COOPERATION AGENCY	NIPPON KOEI CO., LTD AND ALMEC CORPORATION	PROFILE 19+500 - 20+186.738 H=1:2,000 V=1:200	R-14a



PROJECT NAME	CLIENTS		CONSULTANTS	DRAWING TITLE	SCALE	DWG NO
THE FEASIBILITY STUDY ON THE 2ND KOHAT TUNNEL AND ACCESS ROADS PROJECT	 GOVERNMENT OF PAKISTAN MINISTRY OF COMMUNICATIONS NATIONAL HIGHWAY AUTHORITY	 JAPAN INTERNATIONAL COOPERATION AGENCY	NIPPON KOEI CO., LTD AND ALMEC CORPORATION	PLAN 16+247-17+300	H=1:2000	R-15



FINISHED ROAD ELEVATIONS	668.087	668.159	669.359	670.559	671.759	672.959	674.159	675.359	676.559	677.759	678.959	680.159	681.359	682.559	683.759	684.959	686.159	687.359	688.559	689.759	690.959	692.159	693.359
EXISTING ROAD / GROUND ELEVATIONS	672.039	683.339	705.000	730.000	765.000	790.000	800.000	820.000	855.000	900.000	940.000	975.000	995.000	1000.000	1025.000	1050.000	1100.000	1125.000	1140.000	1135.000	1100.000	1060.000	1030.000
CUMULATIVE DISTANCE (CD)	16+247	16+250	16+300	16+350	16+400	16+450	16+500	16+550	16+600	16+650	16+700	16+750	16+800	16+850	16+900	16+950	17+000	17+050	17+100	17+150	17+200	17+250	17+300
HORIZONTAL ALIGNMENT	$R = 8$																						
SUPPER GRADE ELEVATION % AGE	N.C.																						

PROJECT NAME	CLIENTS	CONSULTANTS	DRAWING TITLE	SCALE	DWG NO
THE FEASIBILITY STUDY ON THE 2ND KOHAT TUNNEL AND ACCESS ROADS PROJECT	 <b>GOVERNMENT OF PAKISTAN MINISTRY OF COMMUNICATIONS NATIONAL HIGHWAY AUTHORITY</b>	 <b>JAPAN INTERNATIONAL COOPERATION AGENCY</b>	<b>NIPPON KOEI CO., LTD AND ALMEC CORPORATION</b>	<b>PROFILE 16+247-17+300</b>	<b>1:3,000</b>  <b>R-15-a</b>