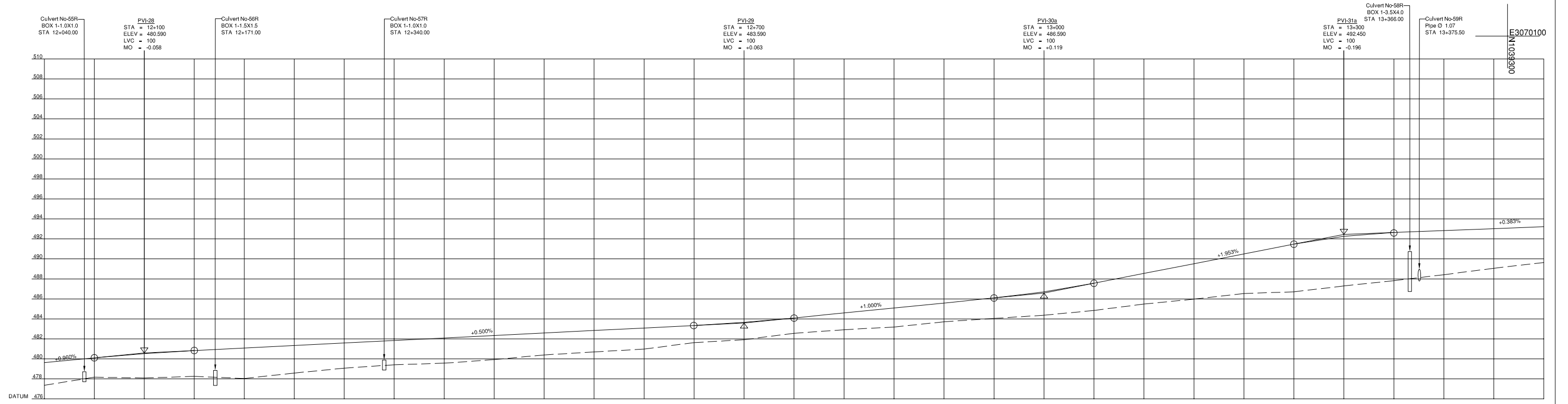
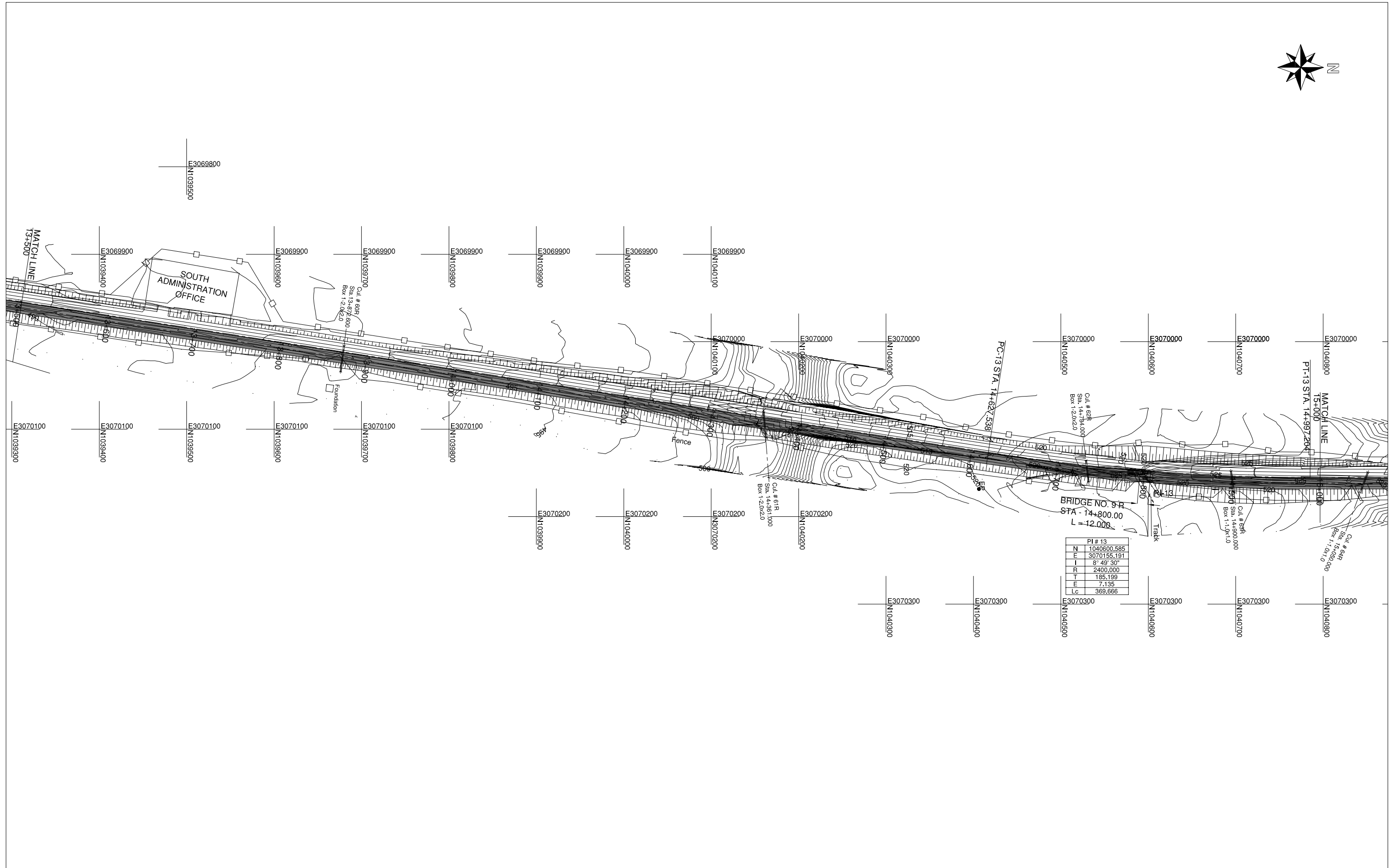


PI # 12			
N	1039000.585		
E	3069750.191		
I	23° 45' 46"		
R	990.000		
A 1	350.000	A 2	350.000
Ls 1	123.737	Ls 2	123.737
Ts 1	270.286	Ts 2	270.286
X 1	123.689	X 2	123.689
Y 1	2.577	Y 2	2.577
ΔR1	0.644	ΔR2	0.644
Xm 1	61.861	Xm 2	61.861
Cl	534.329		
Lc	286.854		
Es	22.333		

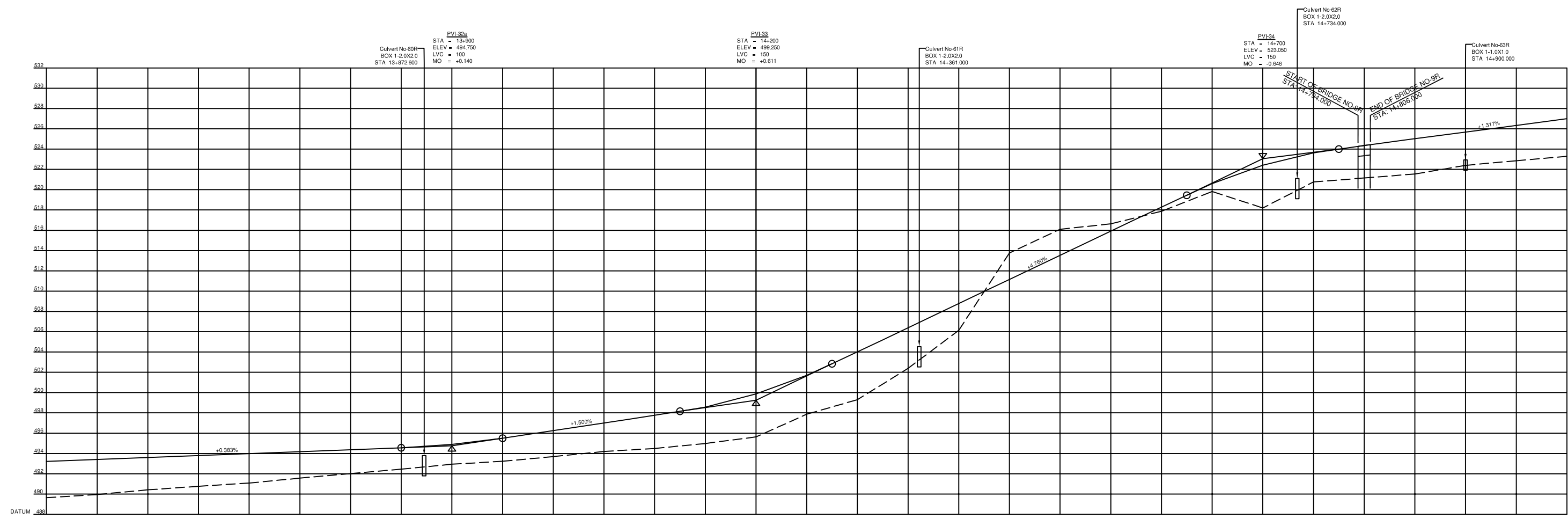


FINISHED ROAD ELEVATIONS	12+000 477.356/479.630	12+038.058 478.170/480.110	12+100 478.086/480.533	12+150 478.256/480.840	12+200 478.040/481.090	12+250 478.585/481.340	12+300 479.075/481.590	12+324.912 479.413/481.840	12+400 479.571/482.090	12+448.649 479.927/482.340	12+500 480.395/482.590	12+550 480.700/482.840	12+600 480.990/483.090	12+650 481.630/483.340	12+700 481.920/483.653	12+750 482.560/484.090	12+800 482.920/484.590	12+850 483.191/485.090	12+900 483.711/485.590	12+950 484.046/486.090	13+000 484.368/486.709	13+050 484.850/487.567	13+100 485.481/488.543	13+150 485.975/489.520	13+200 486.542/490.497	13+250 486.705/491.473	13+300 487.300/492.254	13+350 487.822/492.642	13+400 488.422/492.833	13+450 489.062/493.025	13+500 489.641/493.217
EXISTING ROAD / GROUND ELEVATIONS																															
CUMULATIVE DISTANCE (CD)	12+000	12+038.058	12+100	12+150	12+200	12+250	12+300	12+324.912	12+400	12+448.649	12+500	12+550	12+600	12+650	12+700	12+750	12+800	12+850	12+900	12+950	13+000	13+050	13+100	13+150	13+200	13+250	13+300	13+350	13+400	13+450	13+500
HORIZONTAL ALIGNMENT	R = 990																R = ∞										R = ∞				
SUPPER GRADE ELEVATION % AGE	4.2%																N.C.										N.C.				

PROJECT NAME	CLIENTS	CONSULTANTS	DRAWING TITLE	SCALE	DWG NO
FEASIBILITY STUDY ON THE 2ND KOHAT TUNNEL AND ACCESS ROADS PROJECT	GOVERNMENT OF PAKISTAN MINISTRY OF COMMUNICATIONS NATIONAL HIGHWAY AUTHORITY	NIPPON KOEI CO., LTD AND ALMEC CORPORATION	PLAN & PROFILE 12+000 - 13+500	H=1:2,000 V=1:200	R-9

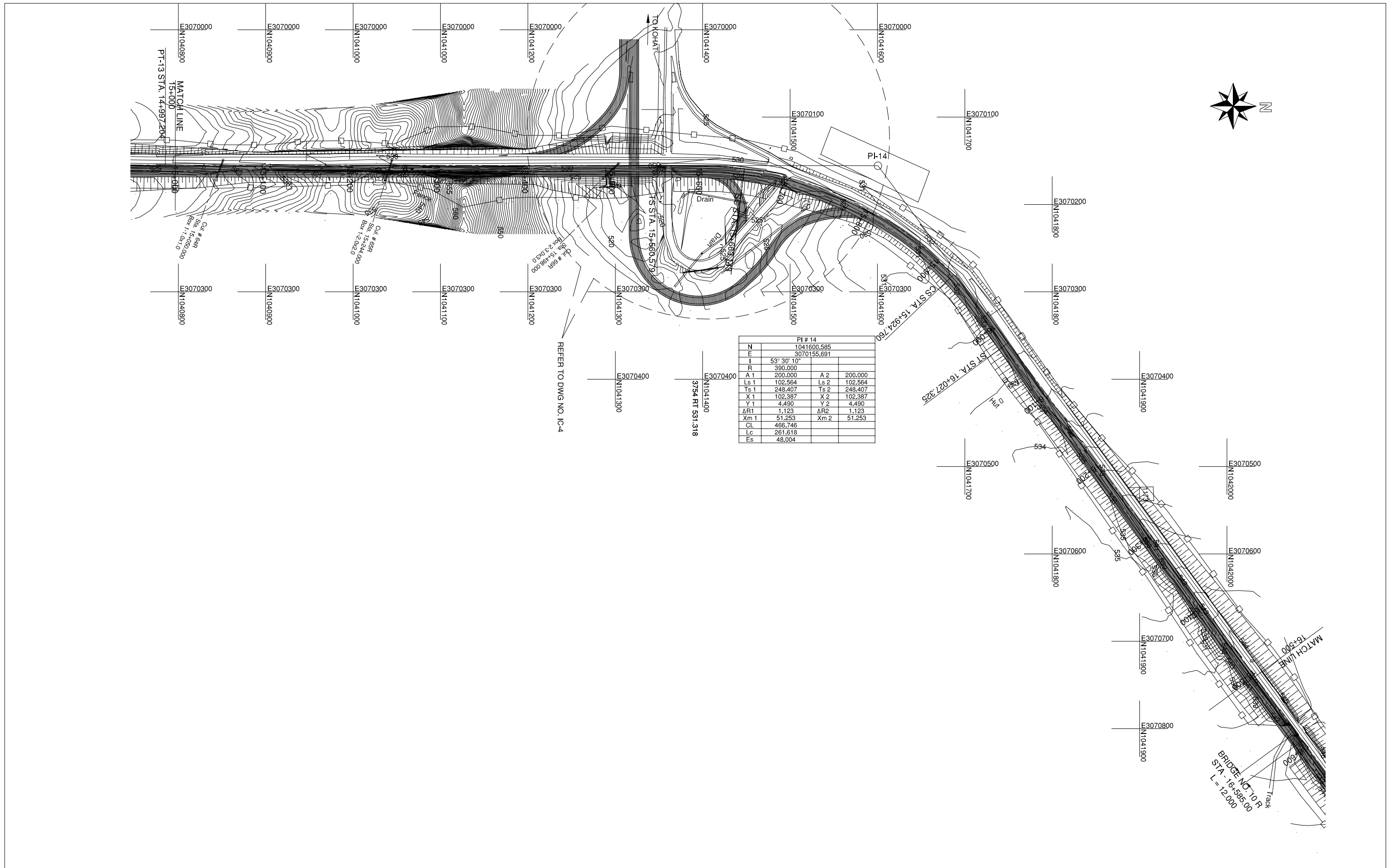


PROJECT NAME	CLIENTS		CONSULTANTS	DRAWING TITLE	SCALE	DWG NO
FEASIBILITY STUDY ON THE 2ND KOHAT TUNNEL AND ACCESS ROADS PROJECT	 GOVERNMENT OF PAKISTAN MINISTRY OF COMMUNICATIONS NATIONAL HIGHWAY AUTHORITY	 JAPAN INTERNATIONAL COOPERATION AGENCY	NIPPON KOEI CO., LTD AND ALMEC CORPORATION	PLAN 13+500 - 15+000	1:2,000 1:4,000	R-10

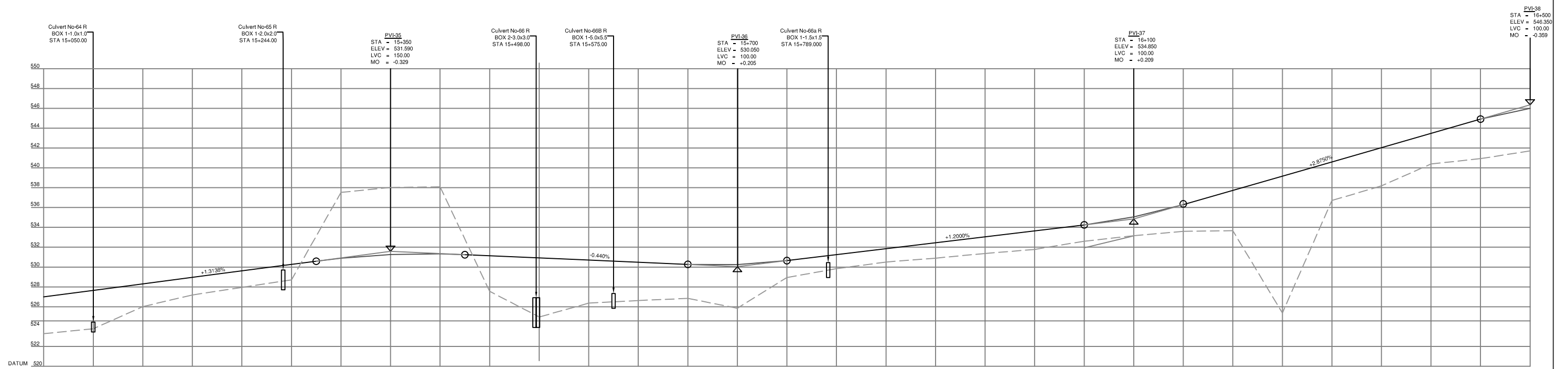


FINISHED ROAD ELEVATIONS	493.217	493.408	493.600	493.792	493.983	494.175	494.367	494.558	494.890	495.500	496.250	497.000	497.750	498.568	499.861	501.688	504.010	506.390	508.770	511.150	513.530	515.910	518.290	520.598	522.404	523.635	524.364	525.021	525.678	526.335	526.991		
EXISTING ROAD / GROUND ELEVATIONS	489.641	489.951	490.413	490.763	491.083	491.568	492.015	492.446	492.936	493.228	493.688	494.198	494.489	494.983	495.630	497.865	499.299	502.387	506.136	513.761	516.101	516.628	517.867	518.290	519.820	518.199	520.762	521.154	521.545	522.400	522.851	523.284	
CUMULATIVE DISTANCE (CD)	13+500	13+550	13+600	13+650	13+700	13+750	13+800	13+850	13+900	13+950	14+000	14+050	14+100	14+150	14+200	14+250	14+300	14+350	14+400	14+450	14+500	14+550	14+600	EC	14+624.518	14+650	14+700	14+750	14+800	14+850	14+900	14+950	15+000
HORIZONTAL ALIGNMENT	R = ∞															R = ∞										H = 2000							
SUPPER GRADE ELEVATION % AGE	N.C.															N.C.										N.C.							

PROJECT NAME	CLIENTS	CONSULTANTS	DRAWING TITLE	SCALE	DWG NO
FEASIBILITY STUDY ON THE 2ND KOHAT TUNNEL AND ACCESS ROADS PROJECT	 GOVERNMENT OF PAKISTAN MINISTRY OF COMMUNICATIONS NATIONAL HIGHWAY AUTHORITY	 JAPAN INTERNATIONAL COOPERATION AGENCY	NIPPON KOEI CO., LTD AND ALMEC CORPORATION	PROFILE 13+500 - 15+000 H=1:2,000 V=1:200	R-10a

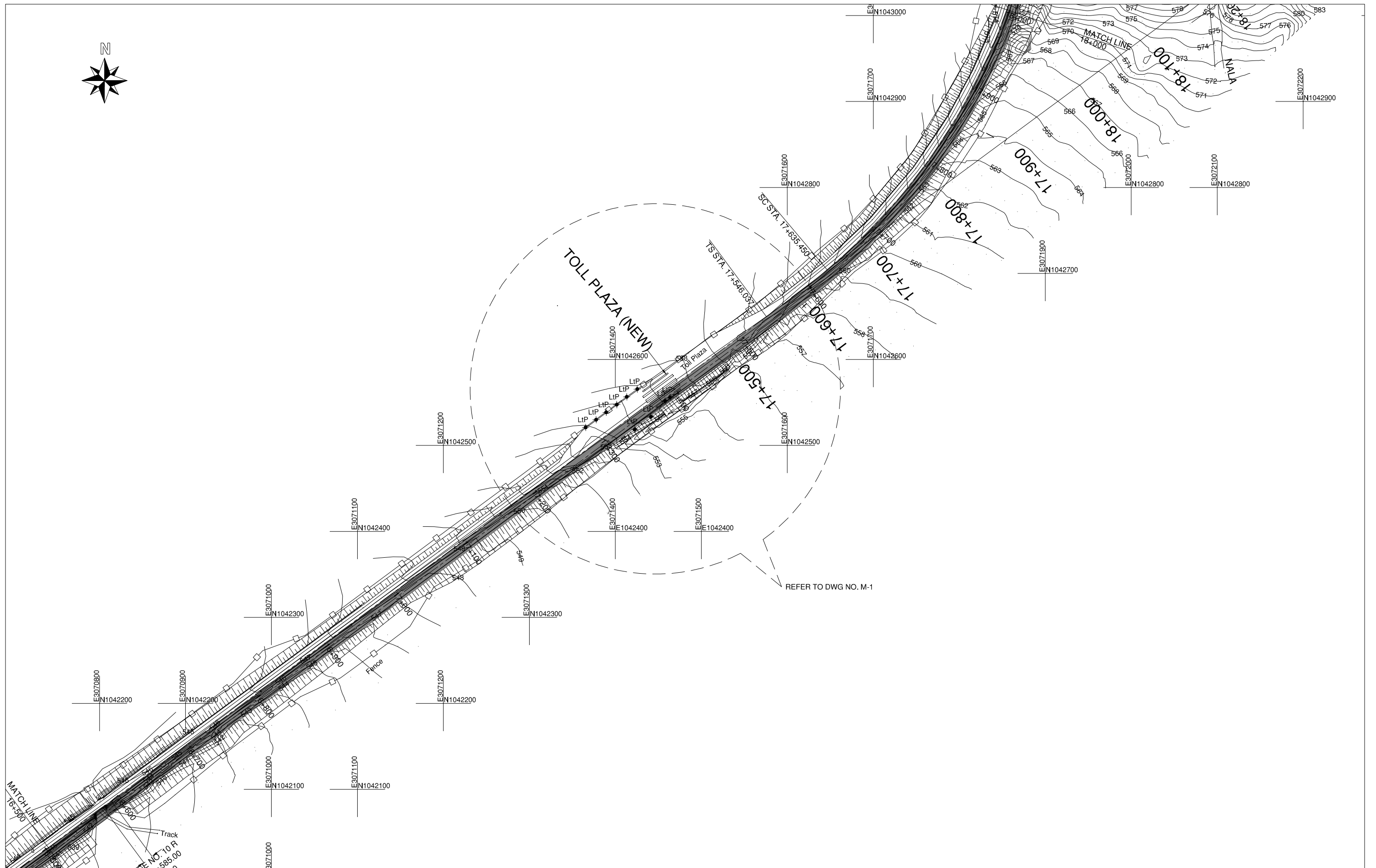


PROJECT NAME	CLIENTS	CONSULTANTS	DRAWING TITLE	SCALE	DWG NO	
FEASIBILITY STUDY ON THE 2ND KOHAT TUNNEL AND ACCESS ROADS PROJECT	 GOVERNMENT OF PAKISTAN MINISTRY OF COMMUNICATIONS NATIONAL HIGHWAY AUTHORITY	 JAPAN INTERNATIONAL COOPERATION AGENCY	NIPPON KOEI CO., LTD AND ALMEC CORPORATION	PLAN 15+000 - 16+500	1:2,000	R-11

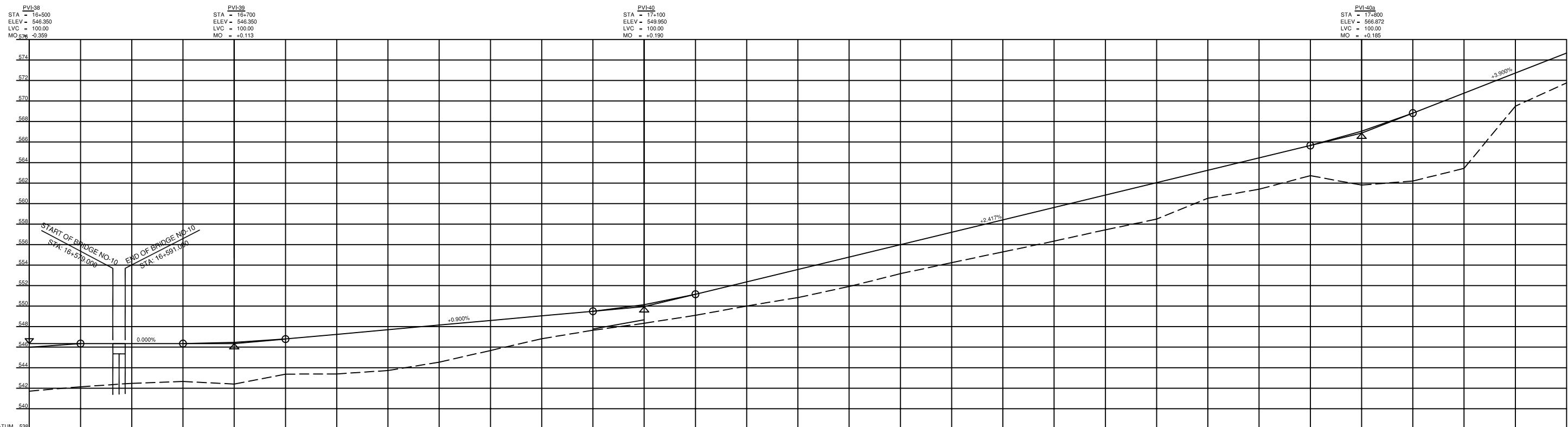


FINISHED ROAD ELEVATIONS	523.284	523.780	526.015	527.186	529.619	528.276	530.897	531.261	531.333	527.554	530.930	526.362	530.710	530.270	525.851	530.650	529.841	531.250	530.507	531.850	530.897	532.450	531.777	533.650	532.602	534.250	533.162	535.055	533.602	536.288	533.662	537.725	525.372	539.163	536.709	540.600	538.184	542.038	540.386	543.475	540.925	544.913	541.710	545.991
EXISTING ROAD / GROUND ELEVATIONS	523.284	523.780	526.015	527.186	529.619	528.276	530.897	531.261	531.333	527.554	530.930	526.362	530.710	530.270	525.851	530.650	529.841	531.250	530.507	531.850	530.897	532.450	531.777	533.650	532.602	534.250	533.162	535.055	533.602	536.288	533.662	537.725	525.372	539.163	536.709	540.600	538.184	542.038	540.386	543.475	540.925	544.913	541.710	545.991
CUMULATIVE DISTANCE (CD)	15+000	15+050	15+100	15+150	15+200	15+250	15+300	15+350	15+400	15+450	15+500	15+550	15+600	15+650	15+700	15+750	15+800	15+850	15+900	15+924.76	15+950	16+000	16+027.325	16+050	16+100	16+150	16+200	16+250	16+300	16+350	16+400	16+450	16+500											
HORIZONTAL ALIGNMENT	R = 8										R = 390										R = 8																							
SUPPER GRADE ELEVATION % AGE	N.C.										e = 8.9%										N.C.																							

PROJECT NAME	CLIENTS	CONSULTANTS	DRAWING TITLE	SCALE	DWG NO
FEASIBILITY STUDY ON THE 2ND KOHAT TUNNEL AND ACCESS ROADS PROJECT	 GOVERNMENT OF PAKISTAN MINISTRY OF COMMUNICATIONS NATIONAL HIGHWAY AUTHORITY	 JAPAN INTERNATIONAL COOPERATION AGENCY	NIPPON KOEI CO., LTD AND ALMEC CORPORATION	PROFILE 15+000 - 16+500 H=1:2,000 V=1:200	R-11a



PROJECT NAME	CLIENTS		CONSULTANTS	DRAWING TITLE	SCALE	DWG NO
FEASIBILITY STUDY ON THE 2ND KOHAT TUNNEL AND ACCESS ROADS PROJECT	 GOVERNMENT OF PAKISTAN MINISTRY OF COMMUNICATIONS NATIONAL HIGHWAY AUTHORITY	 JAPAN INTERNATIONAL COOPERATION AGENCY	NIPPON KOEI CO., LTD AND ALMEC CORPORATION	PLAN 16+500 - 18+000	H=1:2,000 V=1:200	R-12



FINISHED ROAD ELEVATIONS	16+500 541.710 545.991	16+550 542.132 546.350	16+600 542.476 546.350	16+650 542.656 546.350	16+700 542.400 546.463	16+750 543.370 546.800	16+800 543.390 547.250	16+850 543.721 547.700	16+900 544.536 548.150	16+950 545.676 548.600	17+000 546.822 549.050	17+050 547.648 549.500	17+100 548.327 550.140	17+150 549.108 551.199	17+200 550.011 552.367	17+250 550.837 553.576	17+300 551.913 554.785	17+350 553.162 555.993	17+400 554.237 557.202	17+450 555.287 558.411	17+500 556.337 559.619	17+550 557.442 560.828	17+600 558.482 562.037	17+635 563.445	17+650 560.522 563.245	17+700 561.402 564.454	17+750 562.722 565.662	17+800 561.802 567.057	17+850 562.201 568.822	17+900 563.425 570.772	17+950 569.500 572.722	18+000 571.761 574.672	
EXISTING ROAD / GROUND ELEVATIONS																																	
CUMULATIVE DISTANCE (CD)	16+500	16+550	16+600	16+650	16+700	16+750	16+800	16+850	16+900	16+950	17+000	17+050	17+100	17+150	17+200	17+250	17+300	17+350	17+400	17+450	17+500	17+550	17+600	17+635	17+650	17+700	17+750	17+800	17+850	17+900	17+950	18+000	
HORIZONTAL ALIGNMENT	R = ∞																										R = 899						
SUPPER GRADE ELEVATION % AGE	N.C.																																

PROJECT NAME	CLIENTS	CONSULTANTS	DRAWING TITLE	SCALE	DWG NO
FEASIBILITY STUDY ON THE 2ND KOHAT TUNNEL AND ACCESS ROADS PROJECT	 GOVERNMENT OF PAKISTAN MINISTRY OF COMMUNICATIONS NATIONAL HIGHWAY AUTHORITY	 JAPAN INTERNATIONAL COOPERATION AGENCY	NIPPON KOEI CO., LTD AND ALMEC CORPORATION	PROFILE 16+500 - 18+000 H=1:2,000 V=1:200	R-12a