

MINUTES OF DISCUSSIONS
ON BASIC DESIGN STUDY
ON THE RURAL HEALTH FACILITIES IMPROVEMENT
IN THE REPUBLIC OF MALAWI
(EXPLANATION ON DRAFT REPORT)

In February 2006, the Japan International Cooperation Agency (hereinafter referred to as "JICA") dispatched a Basic Design Study Team on the Project for the Rural Health Facilities Improvement (hereinafter referred to as "the Project") to the Republic of Malawi (hereinafter referred to as "Malawi"), and through discussions, field survey, and technical examination of the results in Japan, JICA prepared a draft report of the study.

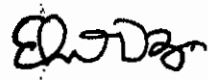
In order to explain and to consult the Malawi on the components of the draft report, JICA sent to Malawi the Draft Report Explanation Team (hereinafter referred to as "the Team"), which is headed by Mr. Kyoji Mizutani, Resident Representative, JICA Malawi Office, from 10 August to 17 August 2006.

As a result of discussions, both parties confirmed the main items described on the attached sheets.

Malawi, 16 August, 2006



Mr. Kyoji Mizutani
Leader
Draft Report Explanation Team
Japan International Cooperation Agency
Japan



Mr. Ellos E. Lodzeni
Director
Finance & Administration
Ministry of Health
Republic of Malawi

ATTACHMENT

1. Components of the Draft Report

The Malawi side accepted in principle the components of the draft report explained by the Team. As a result, both parties confirmed that the items described in Annex-1 are the final components of the Project, which the Malawi side requested.

2. Schedule of the Study

JICA will complete the final report in accordance with the confirmed items and submit it to the Malawi side around October 2006.

3. Other relevant issues

3-1 The Team confirmed that Ministry of Health (hereinafter referred to as "MOH") submitted to the Team title deed for 11 institutions as of August 15. The Team requested MOH to obtain remaining 2 from Mzimba and 3 from Lilongwe. The MOH agreed to submit them to JICA Malawi Office before August 31, 2006.

3-2 The MOH agreed to work with Ministry of Finance to allocate to the four targeted districts, Rumphi, Mzimba, Kasungu, and Lilongwe enough budget for operation and maintenance cost such as water and electricity charges for facilities, and expenses for repair services, spare parts and consumable items after hand-over of the Project.

3-3 The MOH agreed to secure the budget necessary for procurement of equipment and furniture for the facilities newly constructed, which are excluded from the scope of the Japanese grant aid. The detail list of the equipment and furniture which Malawi side will procure and install before February 2008, are shown as Annex-3.

3-3 The MOH agreed to assign a medical assistant to KHC-11 Chamwabvi Dispensary before completion of the construction.

3-4 The MOH requested to indicate the location of outside toilet for male, female and staff, elevated water tank for flush toilet and septic tank in the Health Centre plan in the final building layout plan for future construction by Malawi side.

Ka

Q

Annex-1: Components of the request by the Malawi side

1-1 Targeted Facilities

1-2 Basic Design Drawing

1-3 Equipment Plan

1-4 Breakdown of Equipment List for each health centre

Annex-2: Equipment and furniture list that Malawi side will procure

2-1 District Hospital

2-2 Health Centre

Annex-3: Tentative Implementation Schedule

KM

Q

Annex-1: Components of the request by the Malawi side

1-1 Targeted facilities

No.	ID No.	Name	Construction	Type of Building	Medical Equipment.
Rumphi District					
	RDH	Rumphi District Hospital	yes	Paediatrics	yes
			yes	Maternity	yes
1	RHC-1	Chitimba HC	no		yes
2	RHC-2	Jalawe HC	no		yes
3	RHC-3	Katowo RH	yes	Maternity	yes
4	RHC-4	Mhujju HC	no		yes
5	RHC-5	Mpompha HC	no		yes
6	RHC-6	Mwazisi HC	yes	Maternity	yes
Mzimba District					
	MDH	Mzimba District Hospital	yes	Paediatric	yes
7	MHC-1	Bulala HC	no		yes
8	MHC-2	Bwengu HC	no		yes
9	MHC-3	Choma HC	no		yes
10	MHC-4	Emfeni HC	yes	Maternity	yes
11	MHC-5	Emsizini HC	no		yes
12	MHC-6	Endindeni HC	yes	Dispensary	yes
13	MHC-7	Enukweni HC	no		yes
14	MHC-8	Engucwini HC	no		yes
15	MHC-9	Euthini HC	yes	Maternity	yes
16	MHC-10	Hoho HC	no		yes
17	MHC-11	Jenda HC	no		yes
18	MHC-12	Kafukule HC	yes	Dispensary	yes
19	MHC-13	Kamteteka HC	no		yes
20	MHC-14	Khosolo HC	no		yes
21	MHC-15	Kabuwa HC	no		yes
22	MHC-16	Kamwe HC	no		yes
23	MHC-17	Luvwere HC	no		yes
24	MHC-18	Luwerezi HC	no		yes
25	MHC-19	Luzi HC	no		yes
26	MHC-20	Madede HC	no		yes
27	MHC-21	Malidade HC	no		yes
28	MHC-22	Manyamula HC	no		yes
29	MHC-23	Mbalachanda HC	no		yes

No.	ID No.	Name	Construction	Type of Building	Medical Equipment.
30	MHC-24	Mpherembe HC	no		yes
31	MHC-25	Msese HC	no		yes
32	MHC-26	Mtende HC	no		yes
33	MHC-27	Mtwalo HC	no		yes
34	MHC-28	Mzalangwe HC	no		yes
35	MHC-29	Mzuzu Urban HC	no		yes
36	MHC-30	Njuyu HC	no		yes
37	MHC-31	Kabwafu HC	no		yes
38	MHC-32	Thunduwike HC	no		yes
39	MHC-33	Mkoma HC	no		yes
40	MHC-34	Luwawa HC	no		yes
41	MHC-35	Nkhukuyu HC	no		yes
Kasungu District					
42	KHC-1	Chulu HC	yes	Dispensary	yes
43	KHC-2	Kamboni HC	no		yes
44	KHC-3	Kapelula HC	yes	Maternity	yes
45	KHC-4	Kawamba HC	no		yes
46	KHC-5	Mkhota HC	no		yes
47	KHC-6	Mtunthama HC	no		yes
48	KHC-7	Santhe HC	no		yes
49	KHC-8	Simulemba HC	yes	Dispensary	yes
50	KHC-9	Wimbe HC	no		yes
51	KHC-10	Khola HC	yes	Dispensary	yes
52	KHC-11	Chamwabvi Dispensary	yes	Maternity	yes
Lilongwe District					
53	LHC-1	Chiwamba HC	yes	Dispensary	yes
54	LHC-2	Mtentera HC	yes	Maternity	yes
55	LHC-3	Mbangombe 1 HC	yes	Dispensary	yes

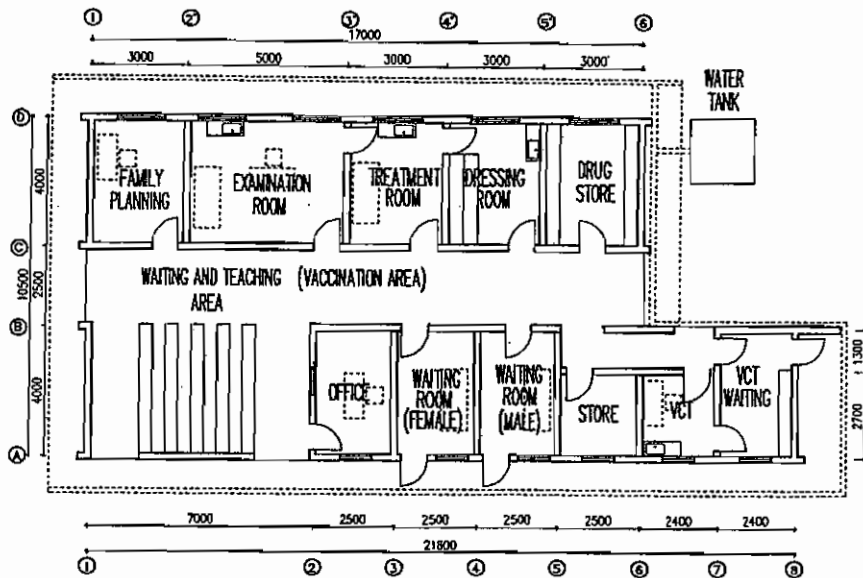
1-2 Basic Design Drawings

List of Drawings

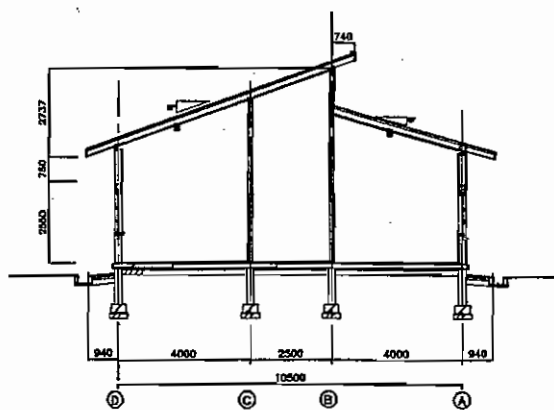
1. HC Dispensary Floor Plan and Section (Common Drawing)
2. HC Dispensary Elevation (Common Drawing)
3. HC Maternity Ward Floor Plan and Section (Common Drawing)
4. HC Maternity Ward Elevation (Common Drawing)
5. Rumphi District Hospital Layout Plan
6. Rumphi District Hospital Paediatric Ward Floor Plan
7. Rumphi District Hospital Paediatric Ward Elevation and Cross Section
8. Rumphi District Hospital Maternity Ward Floor Plan
9. Rumphi District Hospital Maternity Ward Elevation and Cross Section
10. RHC-3 Katowo Rural Hospital Layout Plan and Existing Facilities Floor Plan
11. RHC-6 Mwazisi HC Layout Plan and Existing Facilities Floor Plan
12. Mzimba District Hospital Layout Plan
13. Mzimba District Hospital Paediatric Ward Floor Plan
14. Mzimba District Hospital Paediatric Ward Elevation and Cross Section
15. MHC-4 Emfeni HC Layout Plan and Existing Facilities Floor Plan
16. MHC-6 Endindeni HC Layout Plan and Existing Facilities Floor Plan
17. MHC-9 Euthini HC Layout Plan and Existing Facilities Floor Plan
18. MHC-12 Kafukule HC Layout Plan and Existing Facilities Floor Plan
19. KHC-1 Chulu HC Layout Plan and Existing Facilities Floor Plan
20. KHC-3 Kapelula HC Layout Plan and Existing Facilities Floor Plan
21. KHC-8 Simulemba HC Layout Plan and Existing Facilities Floor Plan
22. KHC-10 Khola HC Layout Plan and Existing Facilities Floor Plan
23. KHC-11 Chamwabvi Dispensary Layout Plan and Existing Facilities Floor Plan
24. LHC-1 Chiwamba HC Layout Plan and Existing Facilities Floor Plan
25. LHC-2 Mtenthera HC Layout Plan and Existing Facilities Floor Plan
26. LHC-3 Mbangombe 1 HC Layout Plan and Existing Facilities Floor Plan

km

Q



DISPENSARY STANDARD PLAN

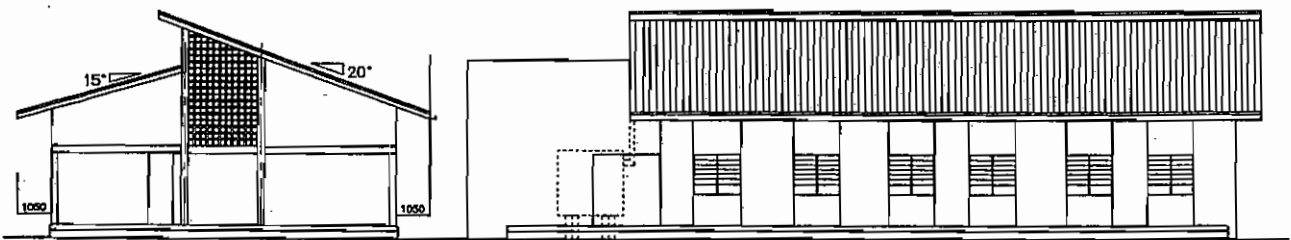
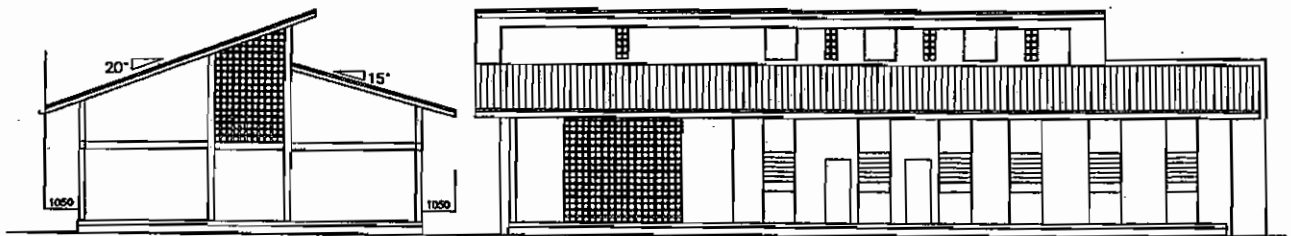


DISPENSARY STANDARD SECTION

0 5M

KM

Q



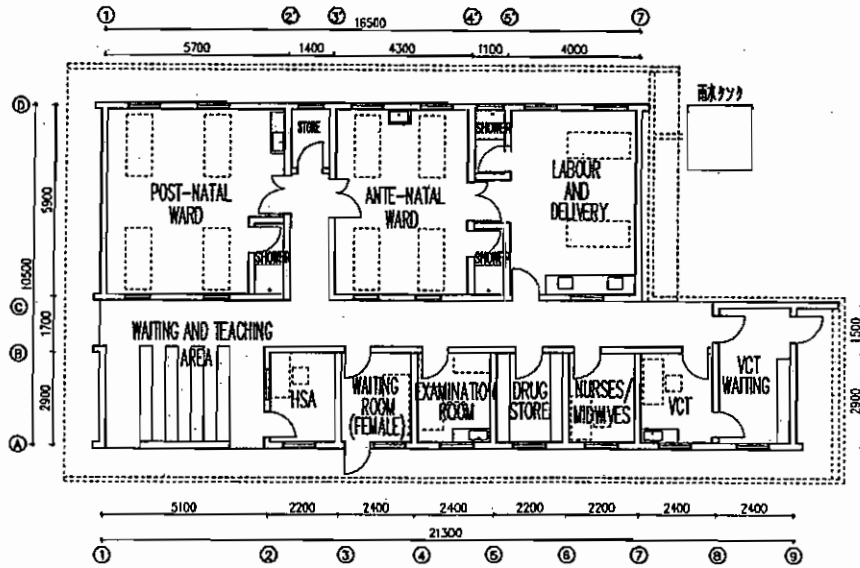
DISPENSARY STANDARD ELEVATION

THE PROJECT FOR THE RURAL HEALTH FACILITIES IMPROVEMENT IN THE REPUBLIC OF MALAWI

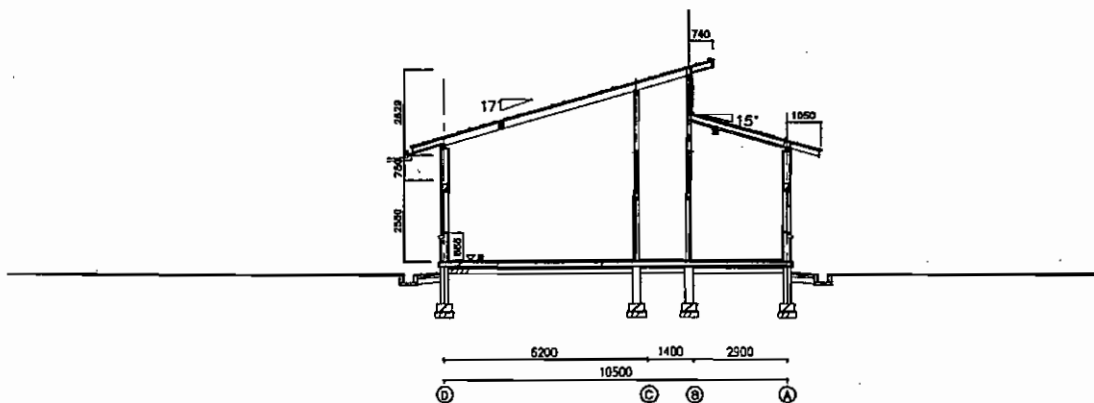
KM

A-72

2.



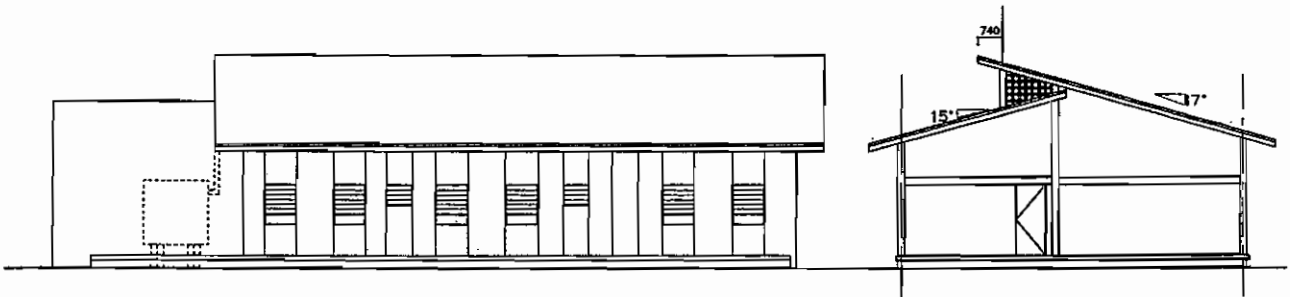
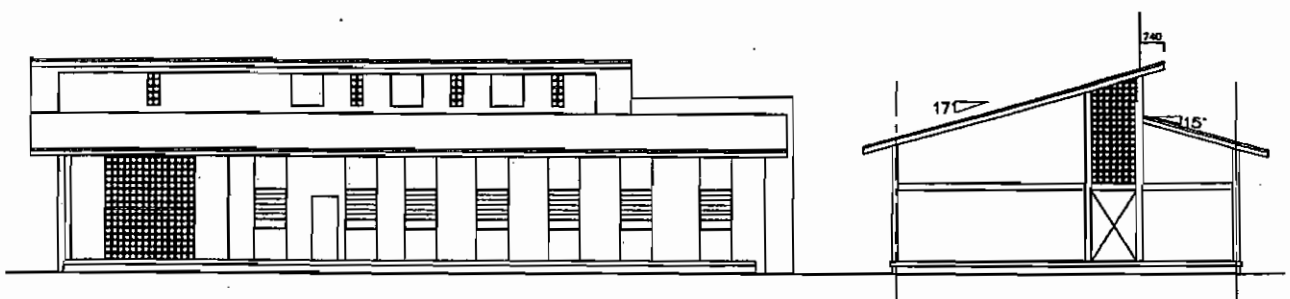
MATERNITY STANDARD PLAN



MATERNITY STANDARD SECTION

KM

Q



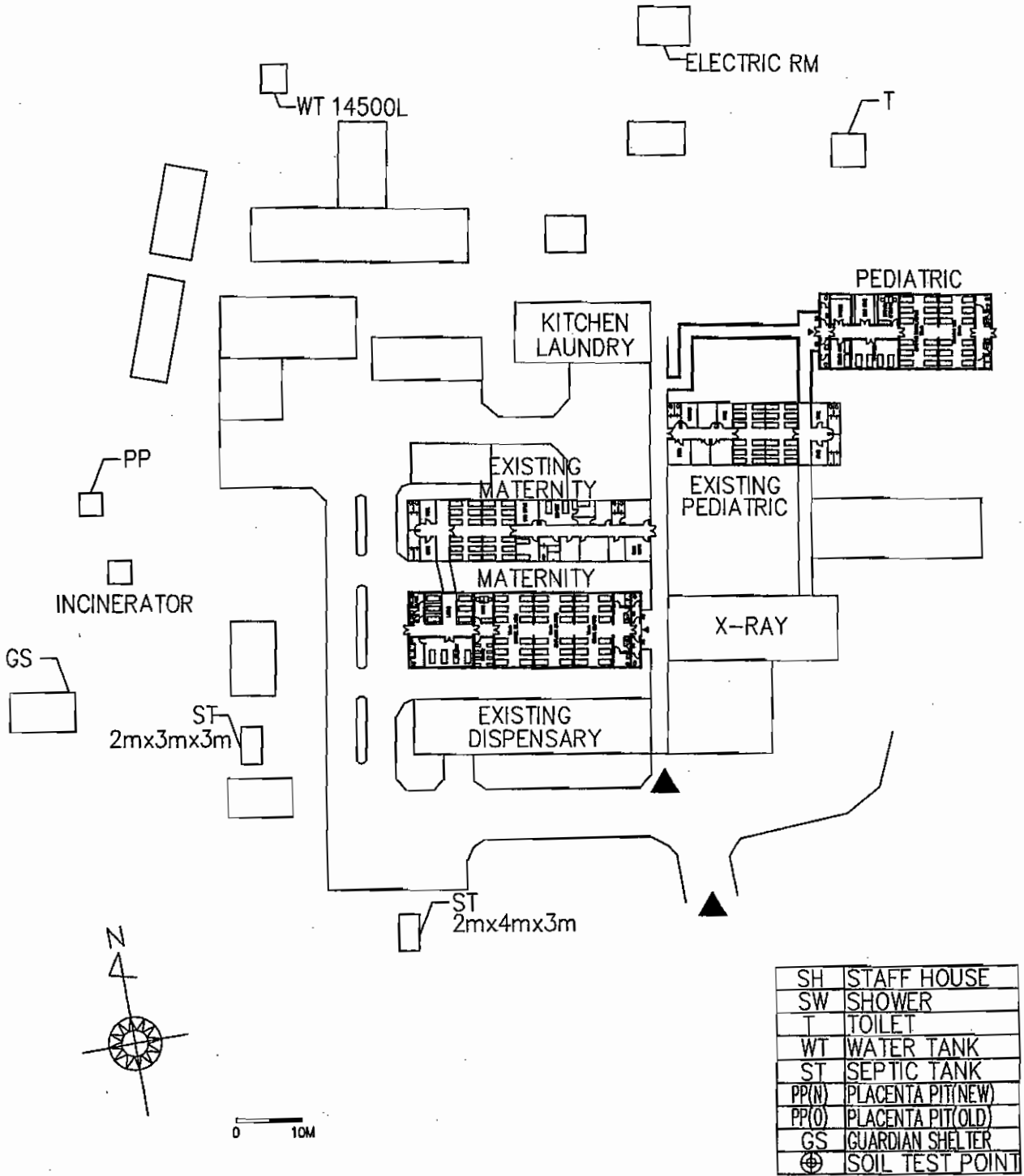
MATERNITY ELEVATION

THE PROJECT FOR THE RURAL HEALTH FACILITIES IMPROVEMENT IN THE REPUBLIC OF MALAWI

KM

A-74

4.



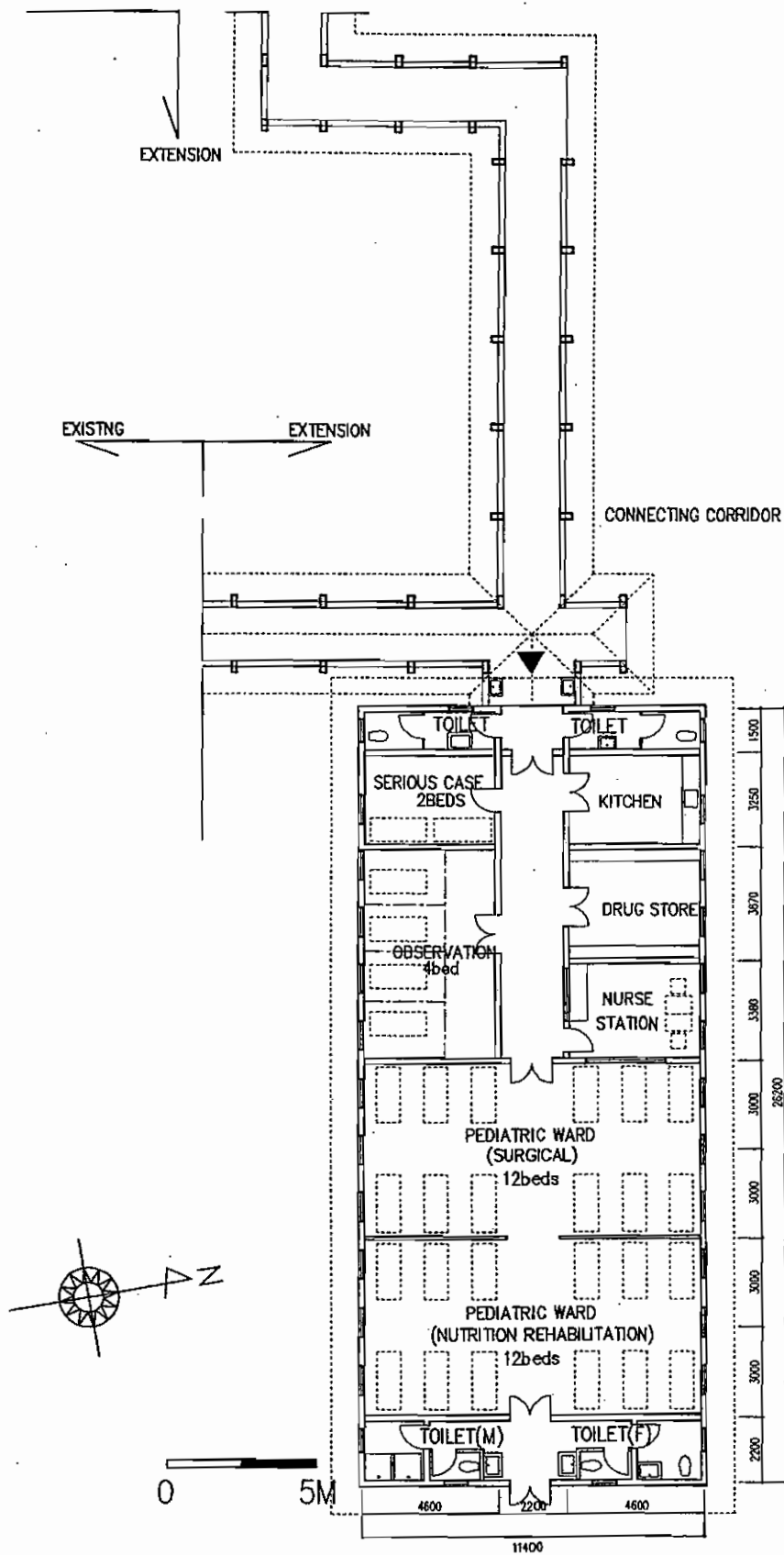
SH	STAFF HOUSE
SW	SHOWER
T	TOILET
WT	WATER TANK
ST	SEPTIC TANK
PP(N)	PLACENTA PIT(NEW)
PP(O)	PLACENTA PIT(OLD)
GS	GUARDIAN SHELTER
⊕	SOIL TEST POINT

RUMPHI DISTRICT HOSPITAL SITE PLAN

THE PROJECT FOR THE RURAL HEALTH FACILITIES IMPROVEMENT IN THE REPUBLIC OF MALAWI

KM

Q



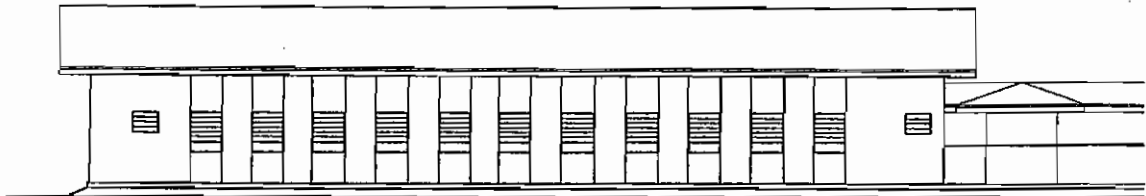
RUMPHI DISTRICT HOSPITAL PEDIATRIC PLAN

THE PROJECT FOR THE RURAL HEALTH FACILITIES IMPROVEMENT IN THE REPUBLIC OF MALAWI

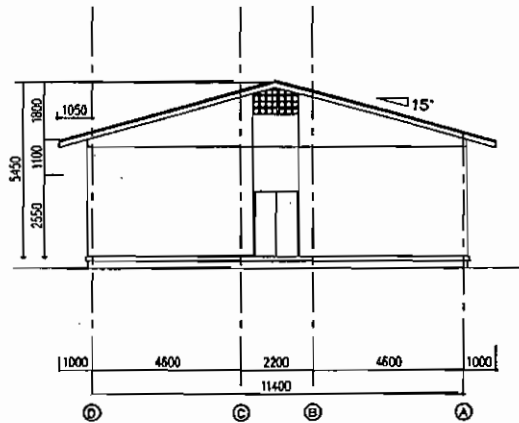
KM

A-76

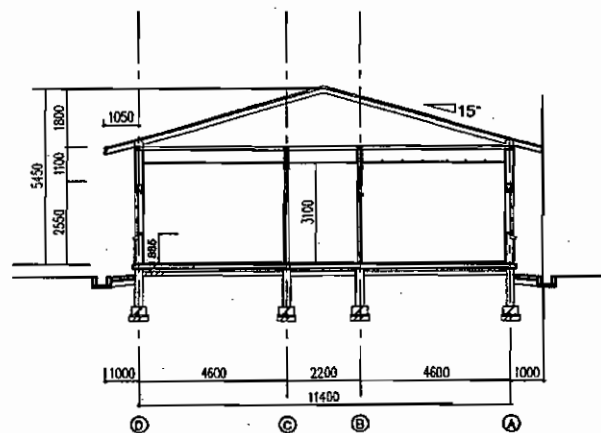
D



SOUTH, NORTH ELEVATION



EAST ELEVATION



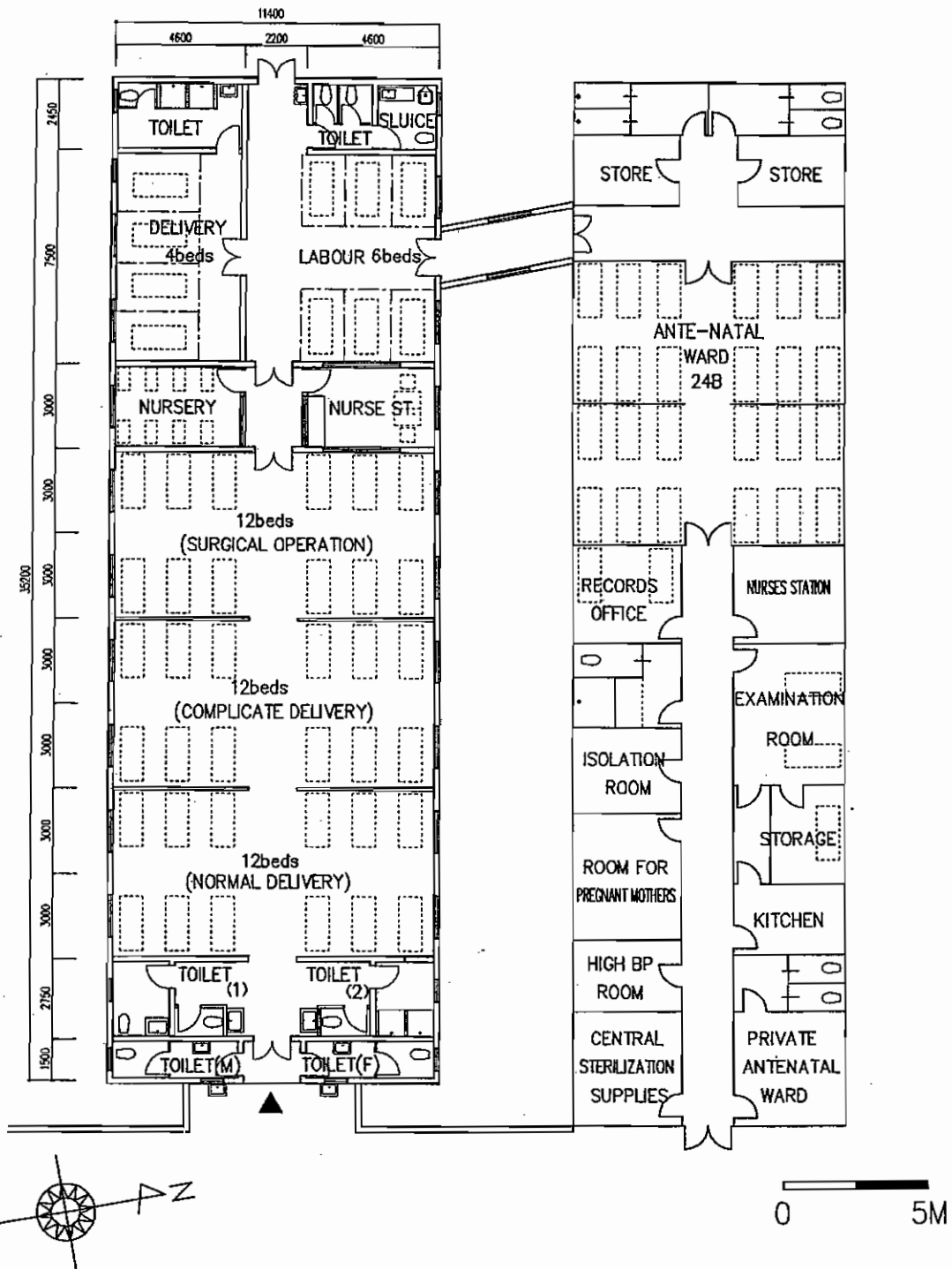
SECTION

RUMPHI DISTRICT HOSPITAL PEDIATRIC ELEVATION

THE PROJECT FOR THE RURAL HEALTH FACILITIES IMPROVEMENT IN THE REPUBLIC OF MALAWI

KM

Q



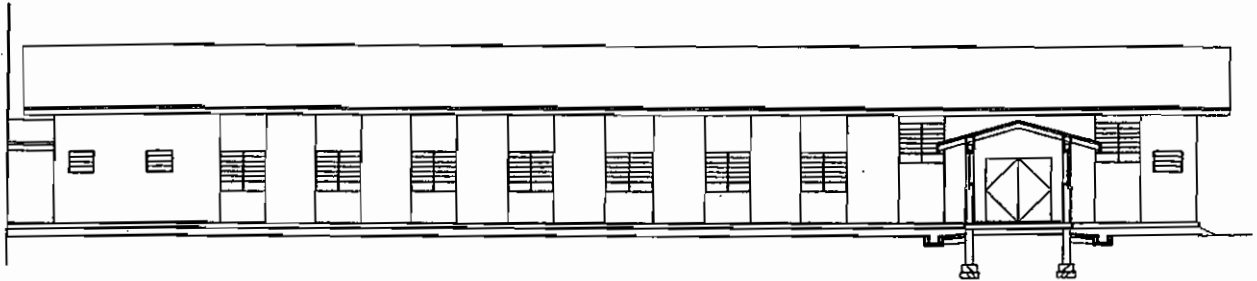
RUMPHI DISTRICT HOSPITAL MATANITY PLAN

THE PROJECT FOR THE RURAL HEALTH FACILITIES IMPROVEMENT IN THE REPUBLIC OF MALAWI

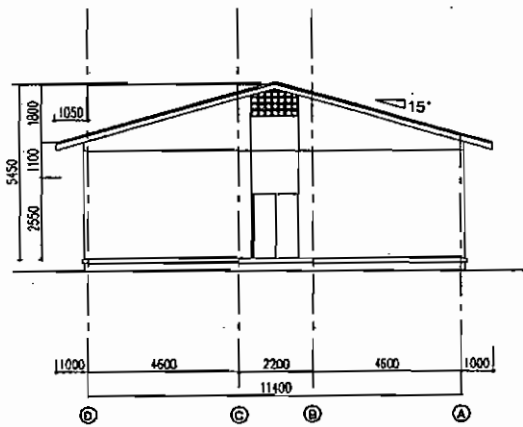
KM

A-78

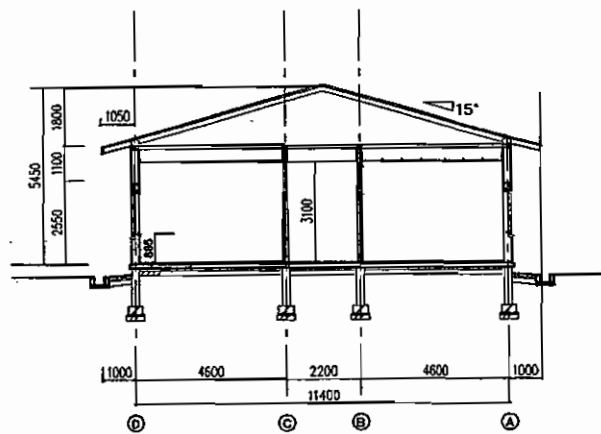
Q



SOUTH, NORTH ELEVATION



WEST ELEVATION



SECTION

RUMPHI DISTRICT HOSPITAL MATANITY ELEVATION/SECTION

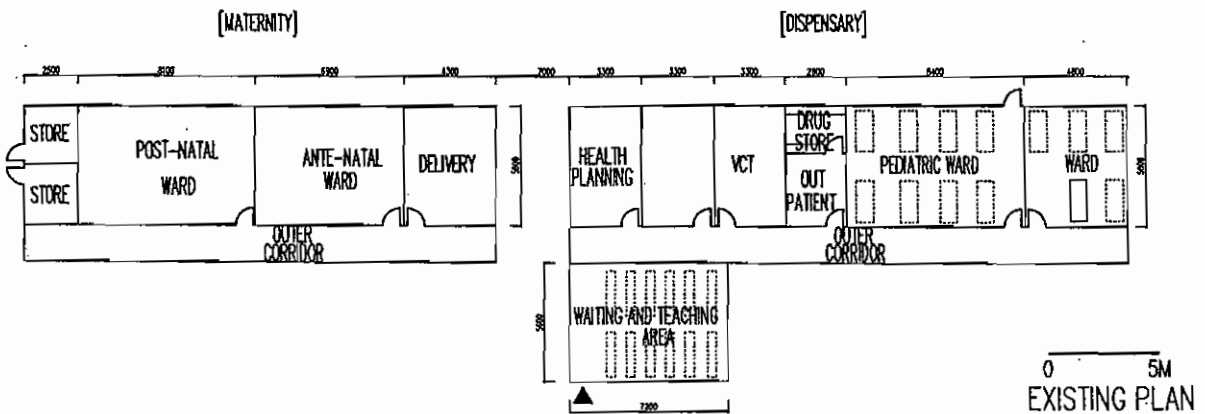
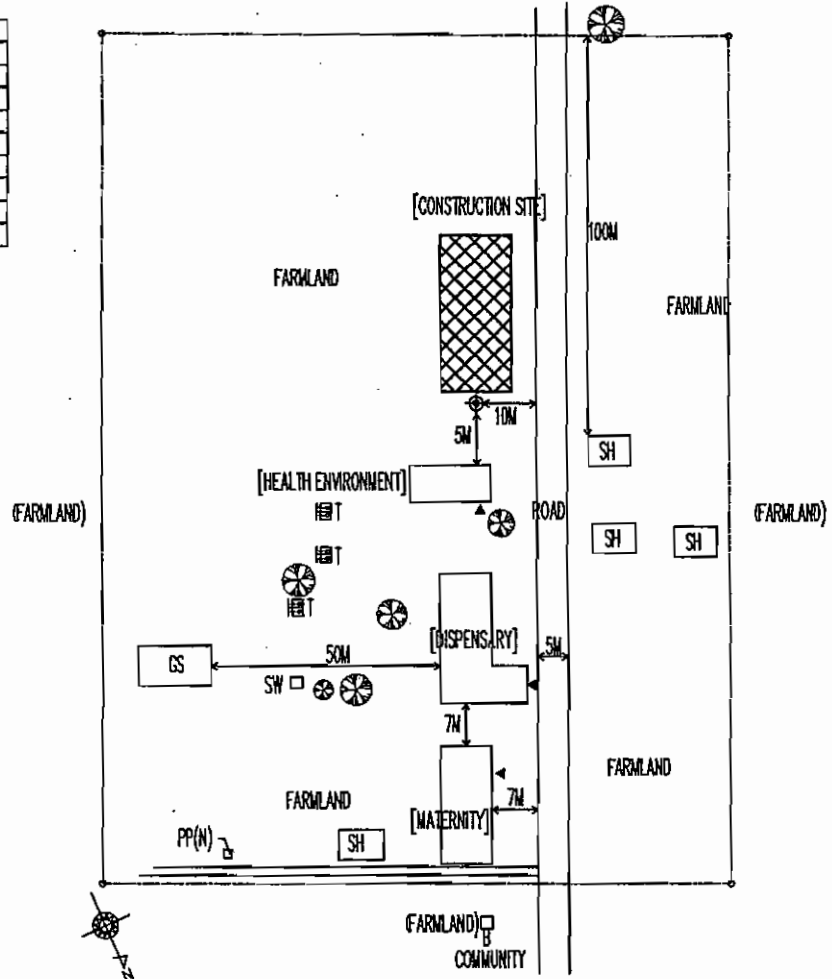
THE PROJECT FOR THE RURAL HEALTH FACILITIES IMPROVEMENT IN THE REPUBLIC OF MALAWI

KM

Q

SITE PLAN

SH	STAFF HOUSE
SW	SHOWER
T	TOILET
WT	WATER TANK
ST	SEPTIC TANK
PP(N)	PLACENTA PIT(NEW)
PP(O)	PLACENTA PIT(OLD)
GS	GUARDIAN SHELTER
⊗	SOIL TEST POINT
B	BORE HOLE

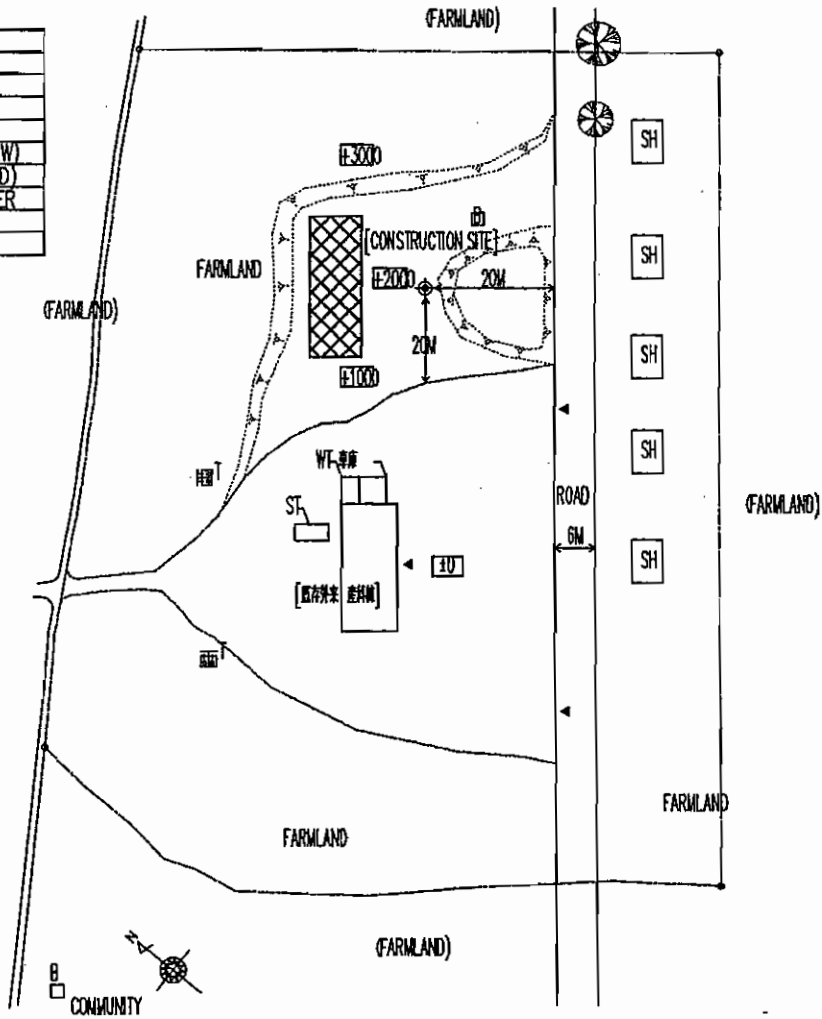


RHC-3 Katowo Rural Hospital (RUMPHI DS) MATERNITY
 THE PROJECT FOR THE RURAL HEALTH FACILITIES IMPROVEMENT IN THE REPUBLIC OF MALAWI

km

80

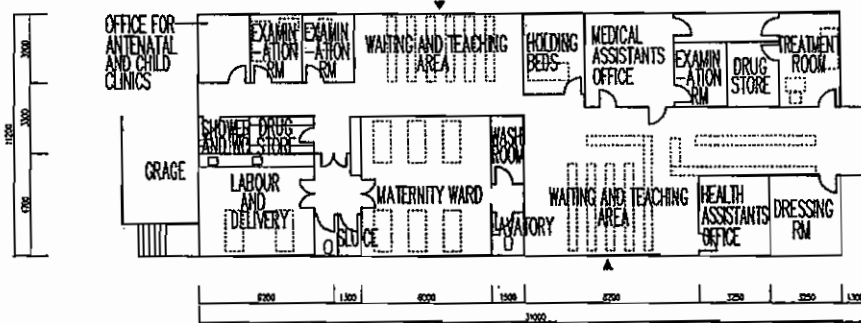
SH	STAFF HOUSE
SW	SHOWER
T	TOILET
WT	WATER TANK
ST	SEPTIC TANK
PP(N)	PLACENTA PIT(NEW)
PP(O)	PLACENTA PIT(OLD)
GS	GUARDIAN SHELTER
⊕	SOIL TEST POINT
B	BORE HOLE



SITE PLAN

[MATERNITY]

[DISPENSARY]



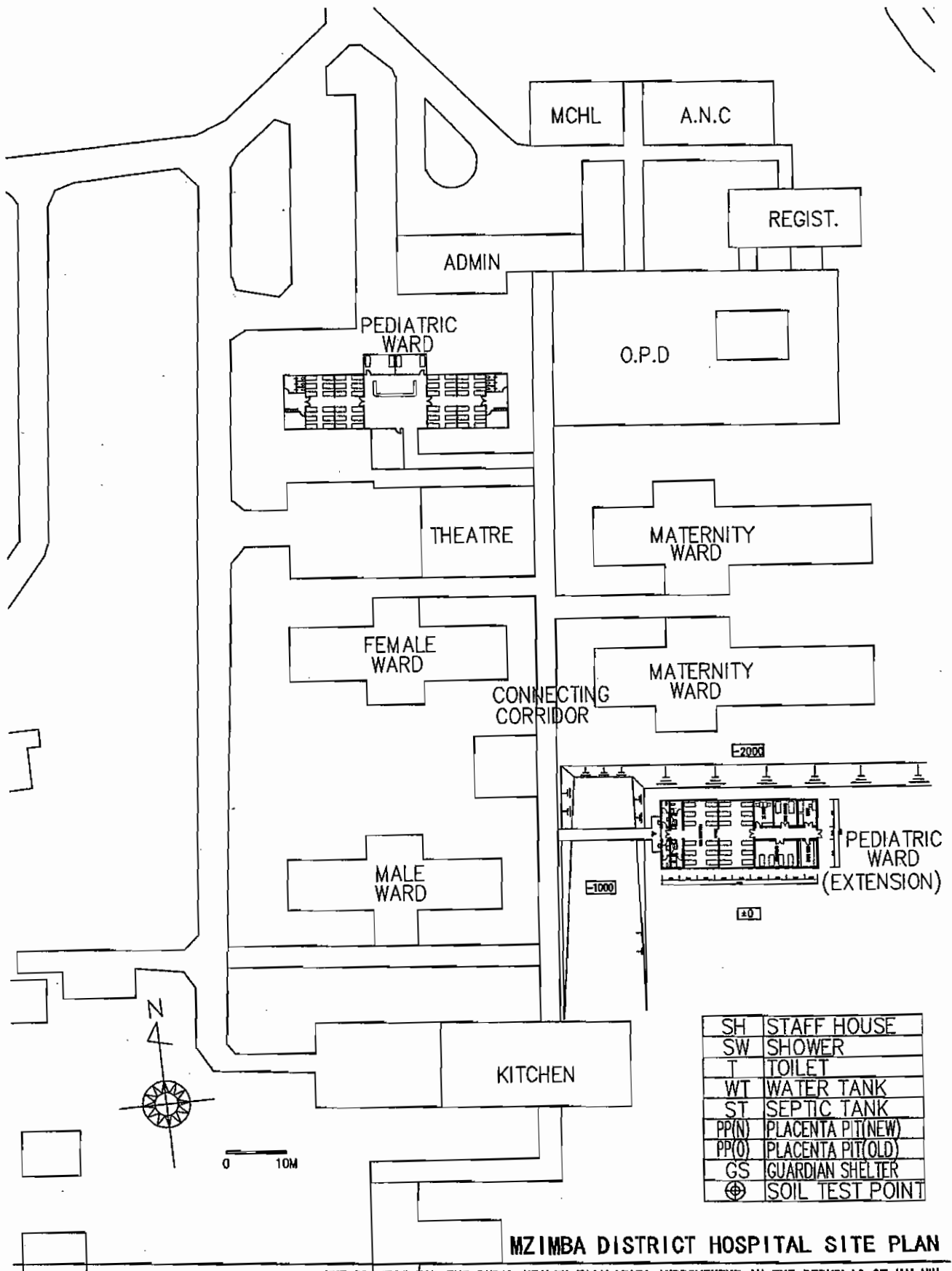
0 5M
EXISTING PLAN

RHC-6 MWAZISI HC (RUMPHI DS) MATERNITY

THE PROJECT FOR THE RURAL HEALTH FACILITIES IMPROVEMENT IN THE REPUBLIC OF MALAWI

km

Q

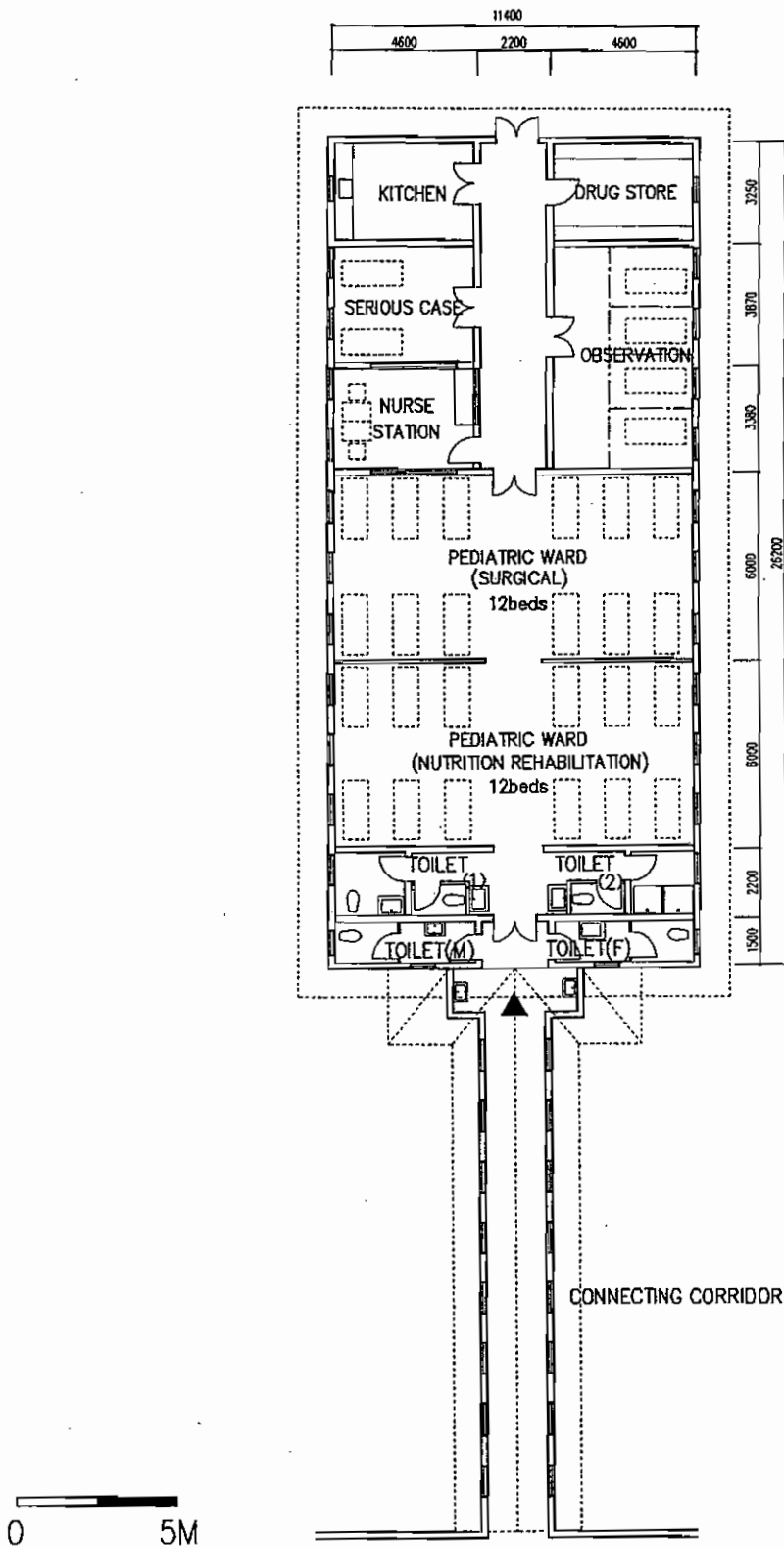


SH	STAFF HOUSE
SW	SHOWER
T	TOILET
WT	WATER TANK
ST	SEPTIC TANK
PP(N)	PLACENTA PIT(NEW)
PP(O)	PLACENTA PIT(OLD)
GS	GUARDIAN SHELTER
⊕	SOIL TEST POINT

MZIMBA DISTRICT HOSPITAL SITE PLAN
 THE PROJECT FOR THE RURAL HEALTH FACILITIES IMPROVEMENT IN THE REPUBLIC OF MALAWI

KM

Q

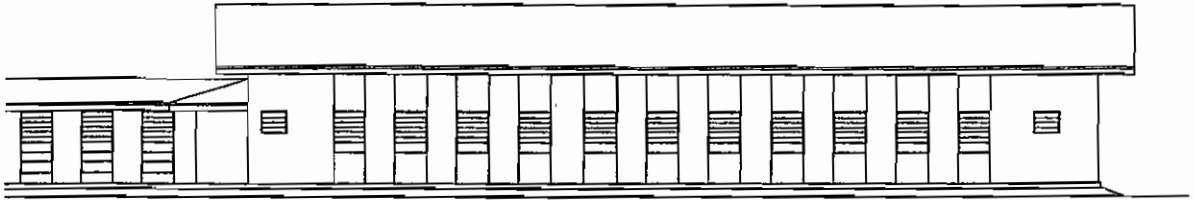


MZIMBA DISTRICT HOSPITAL PEDIATRIC PLAN

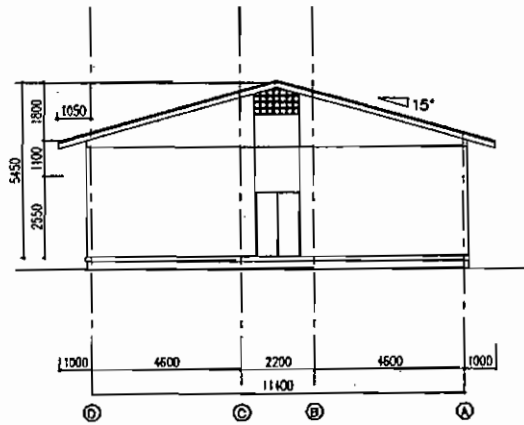
THE PROJECT FOR THE RURAL HEALTH FACILITIES IMPROVEMENT IN THE REPUBLIC OF MALAWI

KM

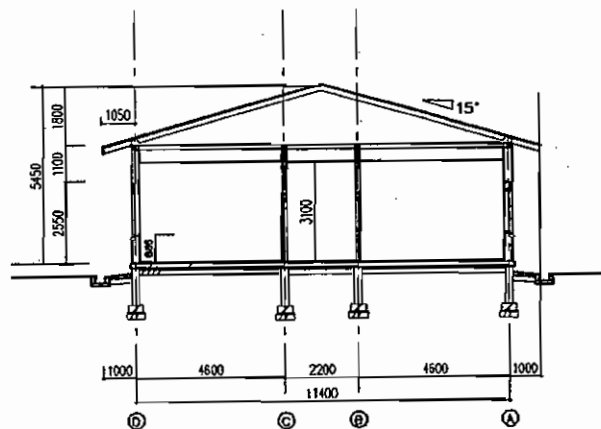
Q



SOUTH, NORTH ELEVATION



EAST ELEVATION



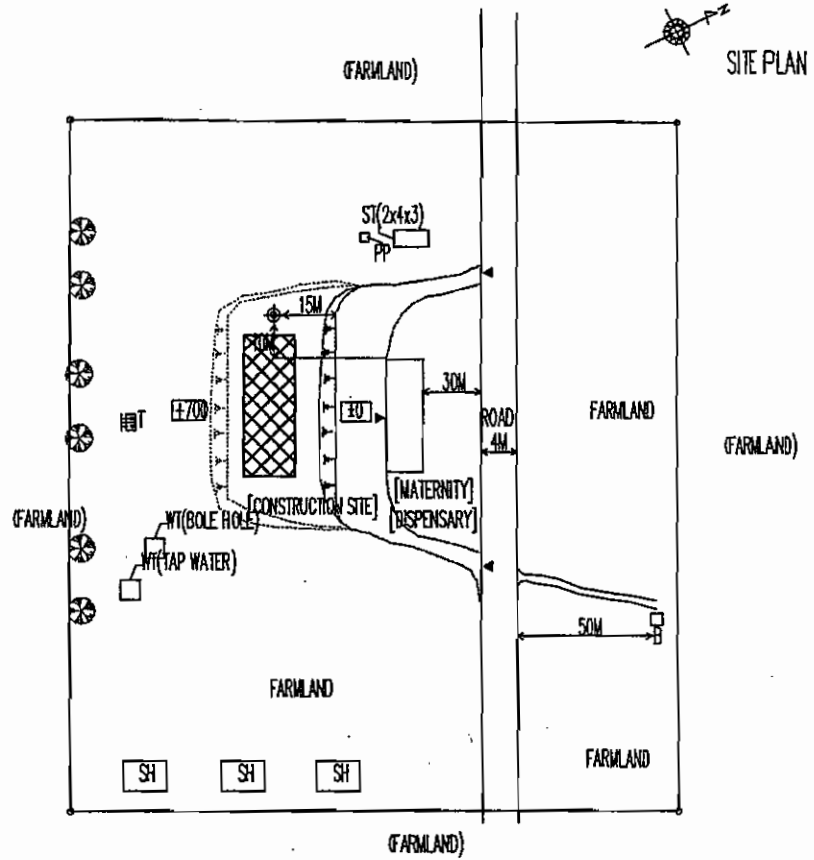
SECTION

MZIMBA DISTRICT HOSPITAL PEDIATRIC ELEVATION
 THE PROJECT FOR THE RURAL HEALTH FACILITIES IMPROVEMENT IN THE REPUBLIC OF MALAWI

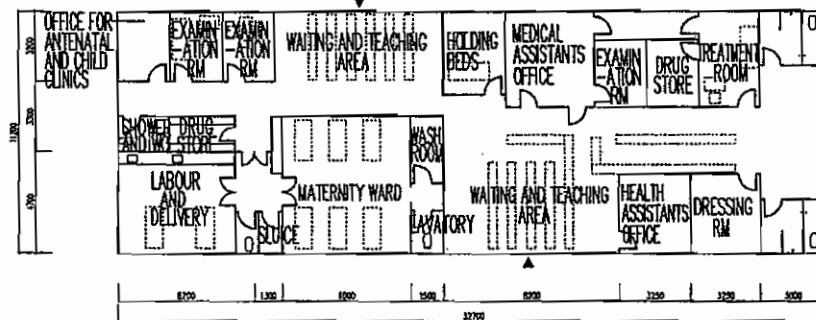
KM

Q

SH	STAFF HOUSE
SW	SHOWER
T	TOILET
WT	WATER TANK
ST	SEPTIC TANK
PP(N)	PLACENTA PIT(NEW)
PP(O)	PLACENTA PIT(OLD)
GS	GUARDIAN SHELTER
⊕	SOIL TEST POINT
B	BORE HOLE



[MATERNITY] [DISPENSARY]



0 5M
EXISTING PLAN

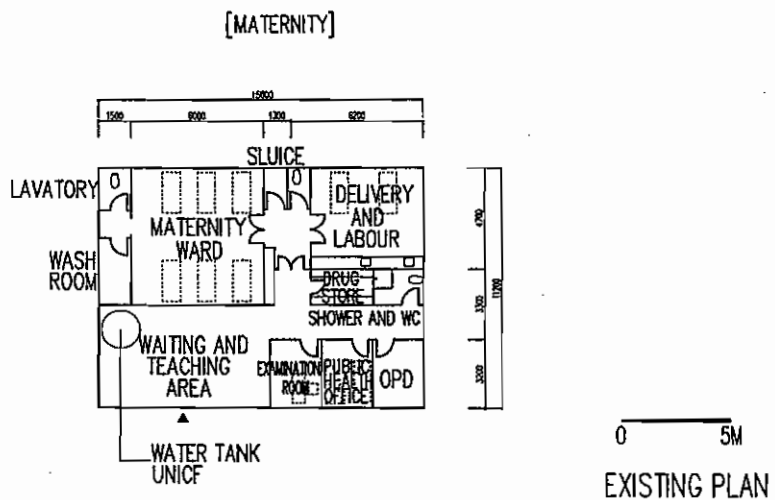
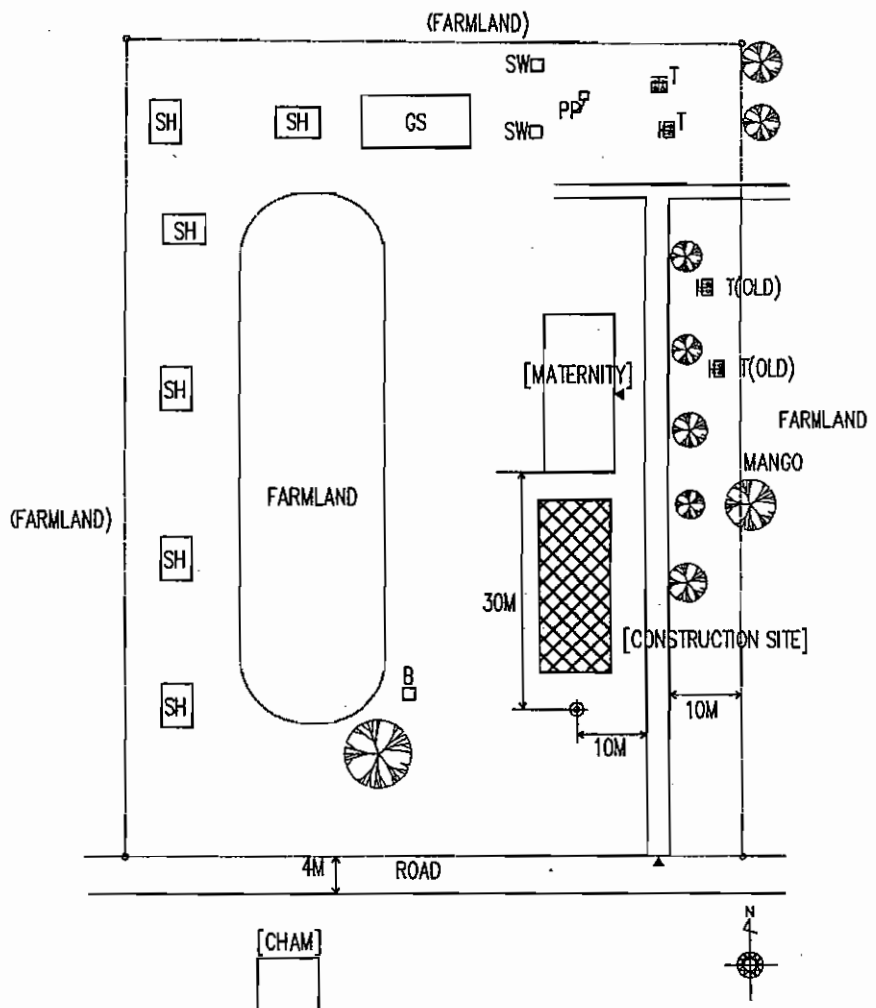
MHC-4 EMFENI HC(MZIMBA DS) MATERNITY

THE PROJECT FOR THE RURAL HEALTH FACILITIES IMPROVEMENT (IN THE REPUBLIC OF MALAWI)

KM

SITE PLAN

SH	STAFF HOUSE
SW	SHOWER
T	TOILET
WT	WATER TANK
ST	SEPTIC TANK
PP(N)	PLACENTA PIT(NEW)
PP(O)	PLACENTA PIT(OLD)
GS	GUARDIAN SHELTER
⊗	SOIL TEST POINT
B	BORE HOLE



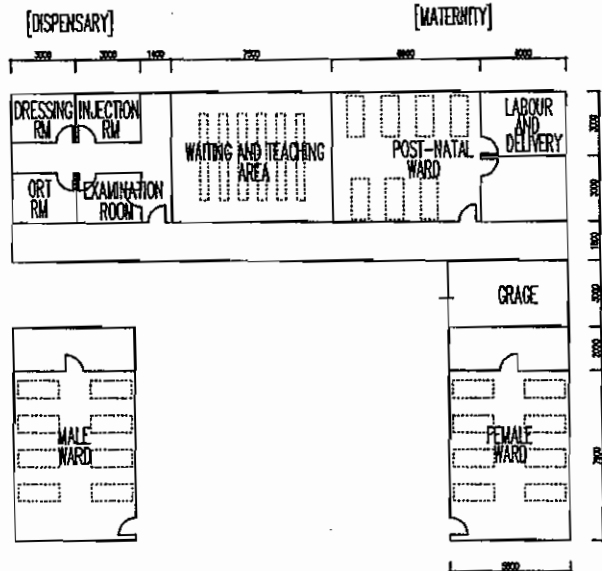
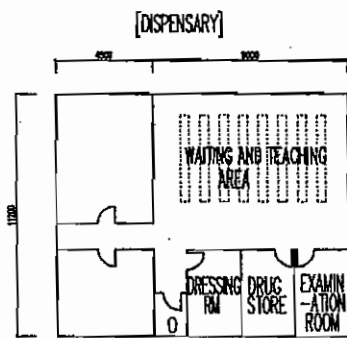
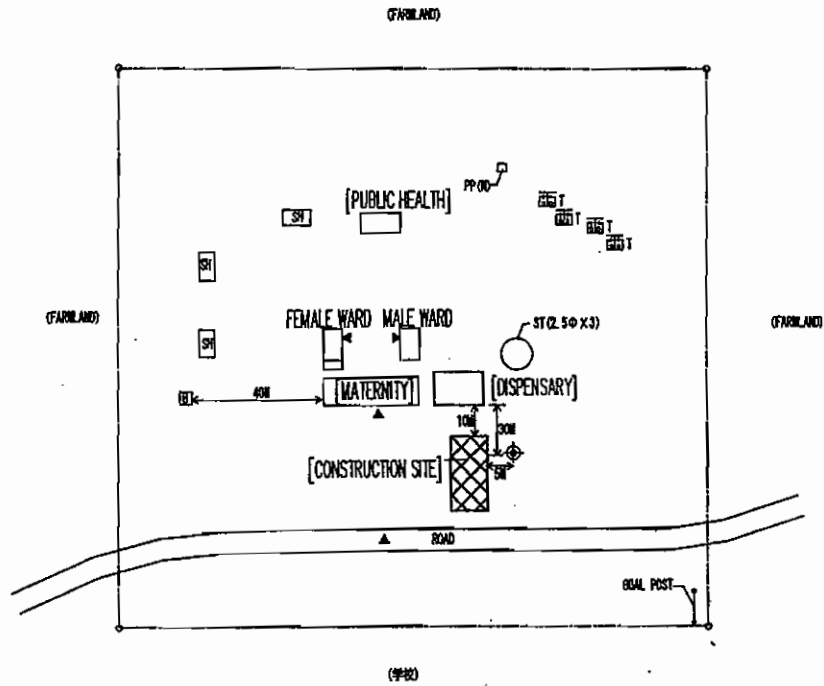
MHC-6 ENDINDENI HC(MZIMBA DS) DISPENSARY
 THE PROJECT FOR THE RURAL HEALTH FACILITIES IMPROVEMENT IN THE REPUBLIC OF MALAWI

K M

Q

SITE PLAN

SH	STAFF HOUSE
SW	SHOWER
T	TOILET
WT	WATER TANK
ST	SEPTIC TANK
PP(N)	PLACENTA PIT(NEW)
PP(O)	PLACENTA PIT(OLD)
CS	GUARDIAN SHELTER
⊕	SOIL TEST POINT
B	BORE HOLE



0 5M
EXISTING PLAN

MHC-9 EUTHINI HC(MZIMBA DS) MATERNITY

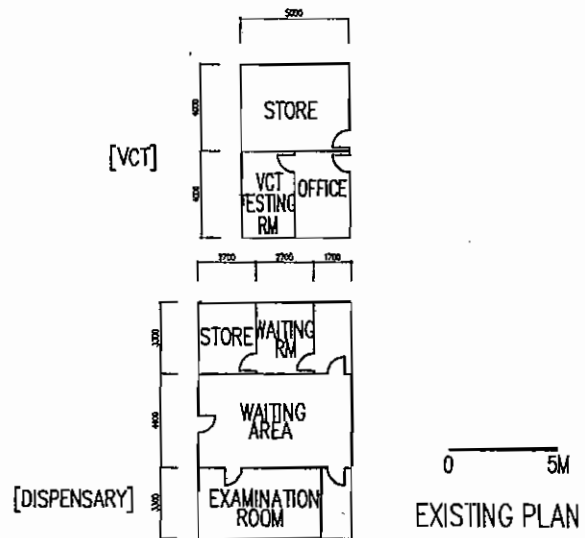
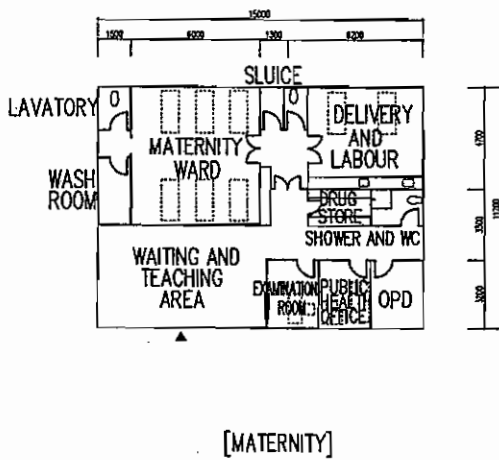
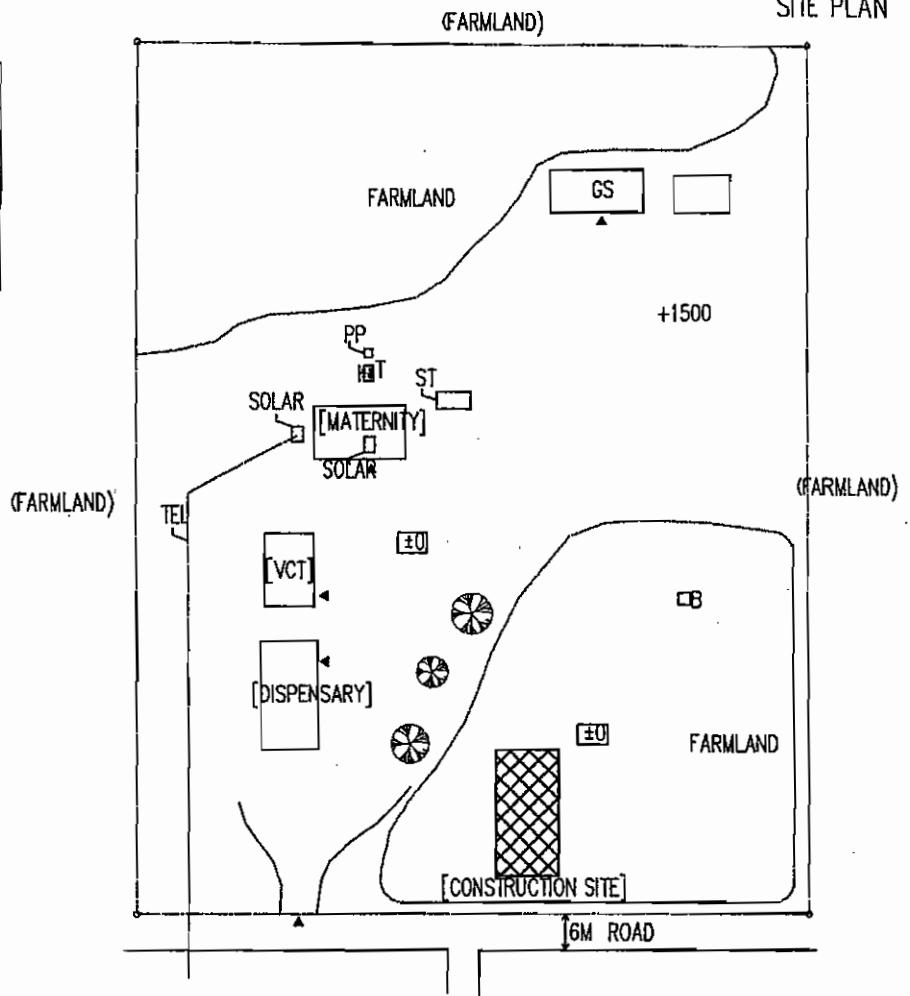
THE PROJECT FOR THE RURAL HEALTH FACILITIES IMPROVEMENT IN THE REPUBLIC OF MALAWI

km

Q

SITE PLAN

SH	STAFF HOUSE
SW	SHOWER
T	TOILET
WT	WATER TANK
ST	SEPTIC TANK
PP(N)	PLACENTA PIT(NEW)
PP(O)	PLACENTA PIT(OLD)
GS	GUARDIAN SHELTER
⊕	SOIL TEST POINT
B	BORE HOLE

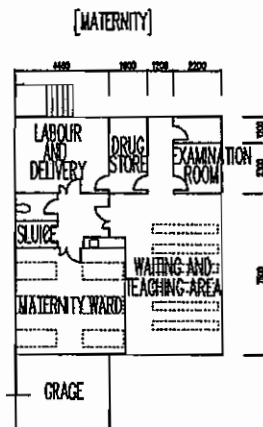
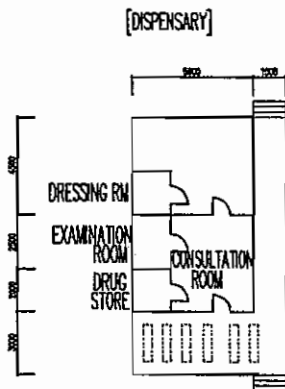
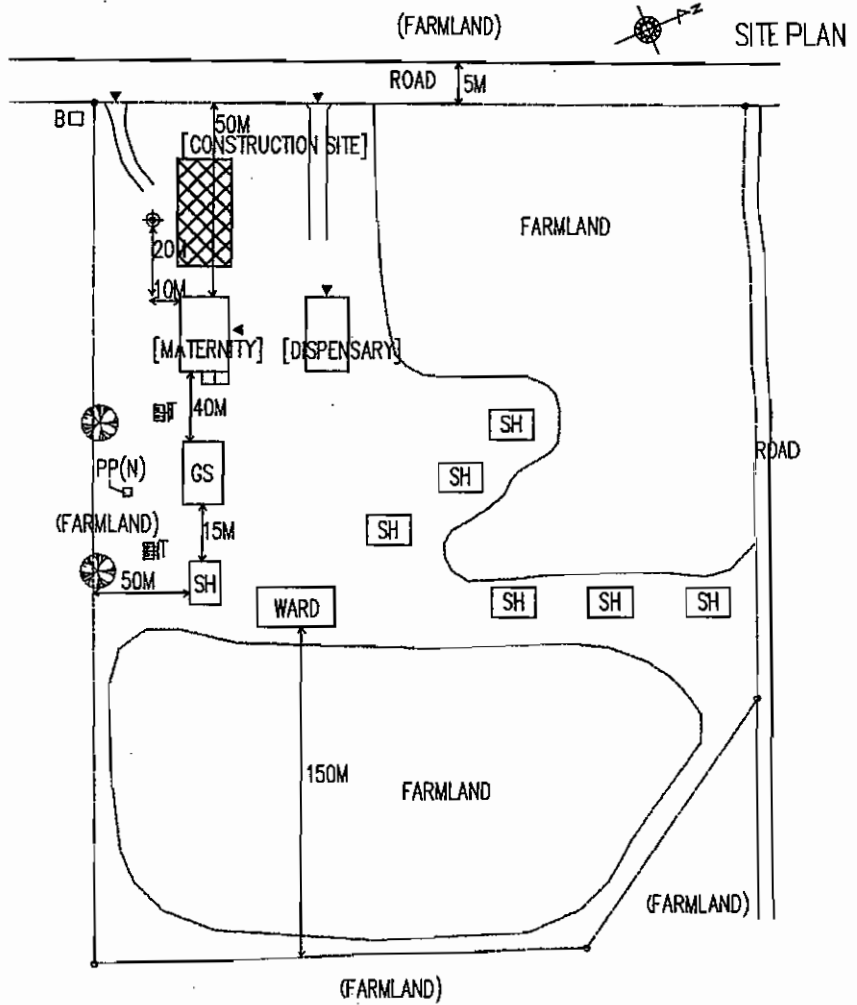


MHC-12 KAFUKULE HC (MZIMBA DS) DISPENSARY
 THE PROJECT FOR THE RURAL HEALTH FACILITIES IMPROVEMENT IN THE REPUBLIC OF MALAWI

KM

Q

SH	STAFF HOUSE
SW	SHOWER
T	TOILET
WT	WATER TANK
ST	SEPTIC TANK
PP(N)	PLACENTA PIT(NEW)
PP(O)	PLACENTA PIT(OLD)
GS	GUARDIAN SHELTER
⊕	SOIL TEST POINT
B	BORE HOLE



0 5M
EXISTING PLAN

KHC-1 CHILU HC (KASJUNGU DS) DISPENSARY

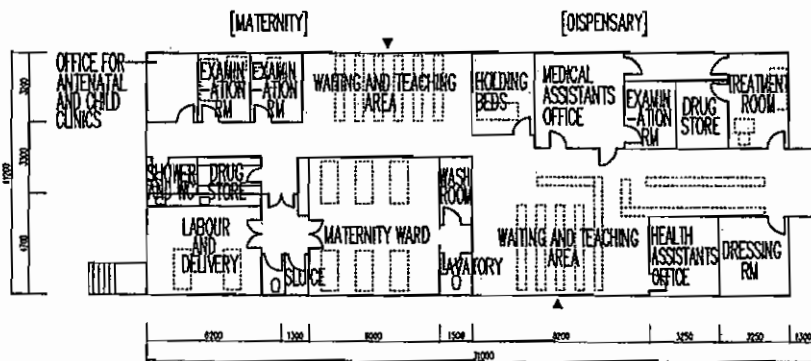
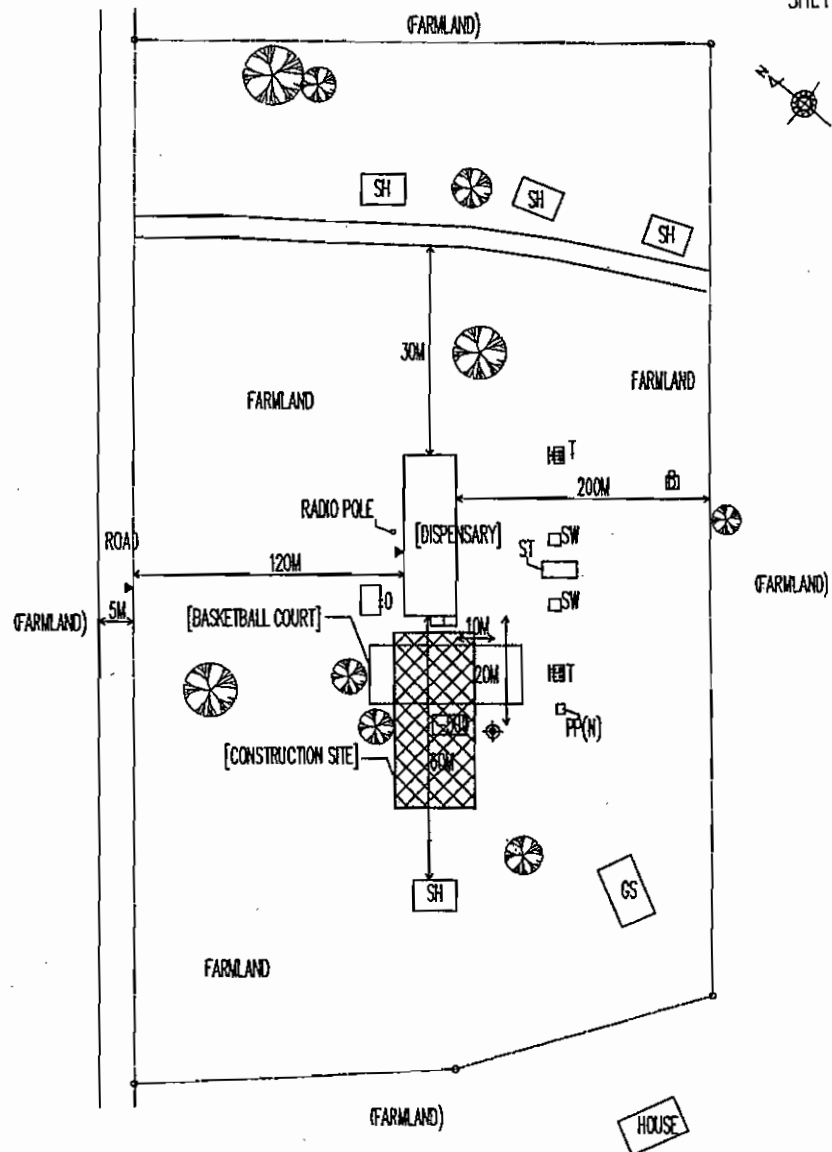
THE PROJECT FOR THE RURAL HEALTH FACILITIES IMPROVEMENT IN THE REPUBLIC OF MALAWI

KM

Q

SITE PLAN

SH	STAFF HOUSE
SW	SHOWER
T	TOILET
WT	WATER TANK
ST	SEPTIC TANK
PP(N)	PLACENTA PIT(NEW)
PP(O)	PLACENTA PIT(OLD)
GS	GUARDIAN SHELTER
⊕	SOIL TEST POINT
B	BORE HOLE



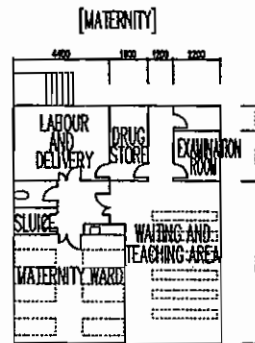
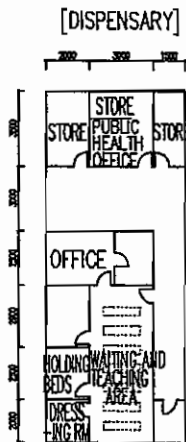
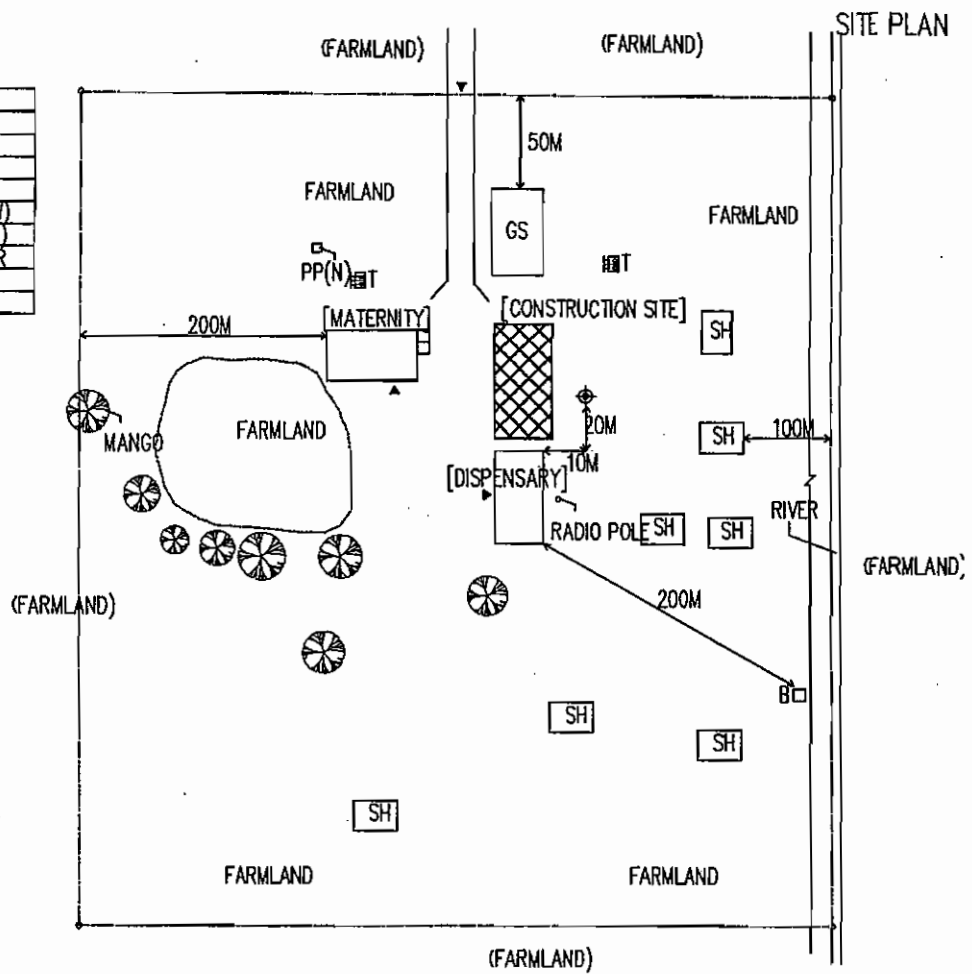
0 5M
EXISTING PLAN

KHC-3 KAPELULA HC (KASUNGU DS) MATERNITY

THE PROJECT FOR THE RURAL HEALTH FACILITIES IMPROVEMENT IN THE REPUBLIC OF MALAWI

KM

SH	STAFF HOUSE
SW	SHOWER
T	TOILET
WT	WATER TANK
ST	SEPTIC TANK
PP(N)	PLACENTA PIT(NEW)
PP(O)	PLACENTA PIT(OLD)
GS	GUARDIAN SHELTER
⊕	SOIL TEST POINT
B	BORE HOLE



0 5M
EXISTING PLAN

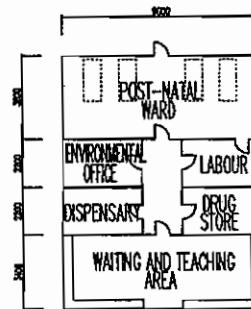
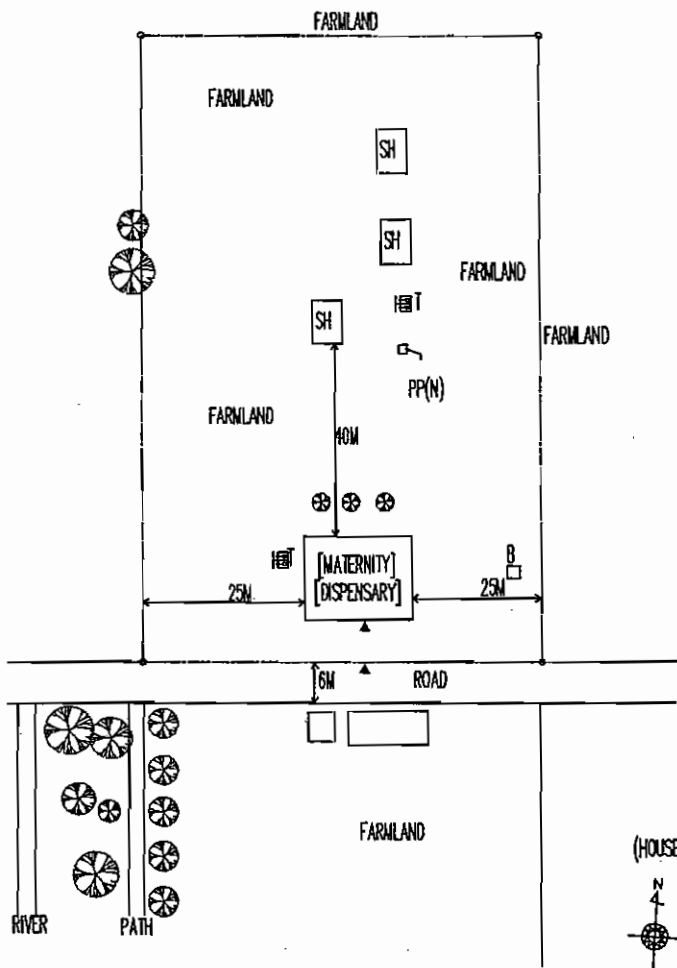
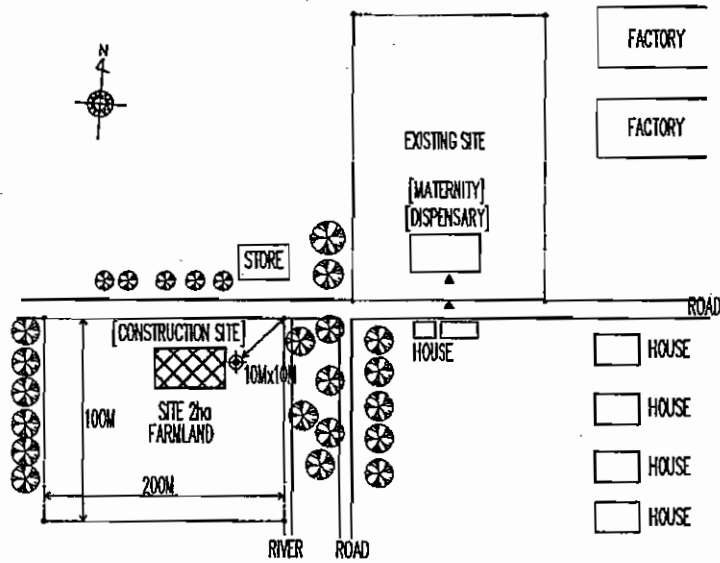
KHC-8 Simulemba HC(KASUNGU DS) DISPENSARY
THE PROJECT FOR THE RURAL HEALTH FACILITIES IMPROVEMENT IN THE REPUBLIC OF MALAWI

KM

Q

SH	STAFF HOUSE
SW	SHOWER
T	TOILET
WT	WATER TANK
ST	SEPTIC TANK
PP(N)	PLACENTA PIT(NEW)
PP(O)	PLACENTA PIT(OLD)
GS	GUARDIAN SHELTER
⊗	SOIL TEST POINT
B	BORE HOLE

SITE PLAN



EXISTING PLAN

SITE PLAN

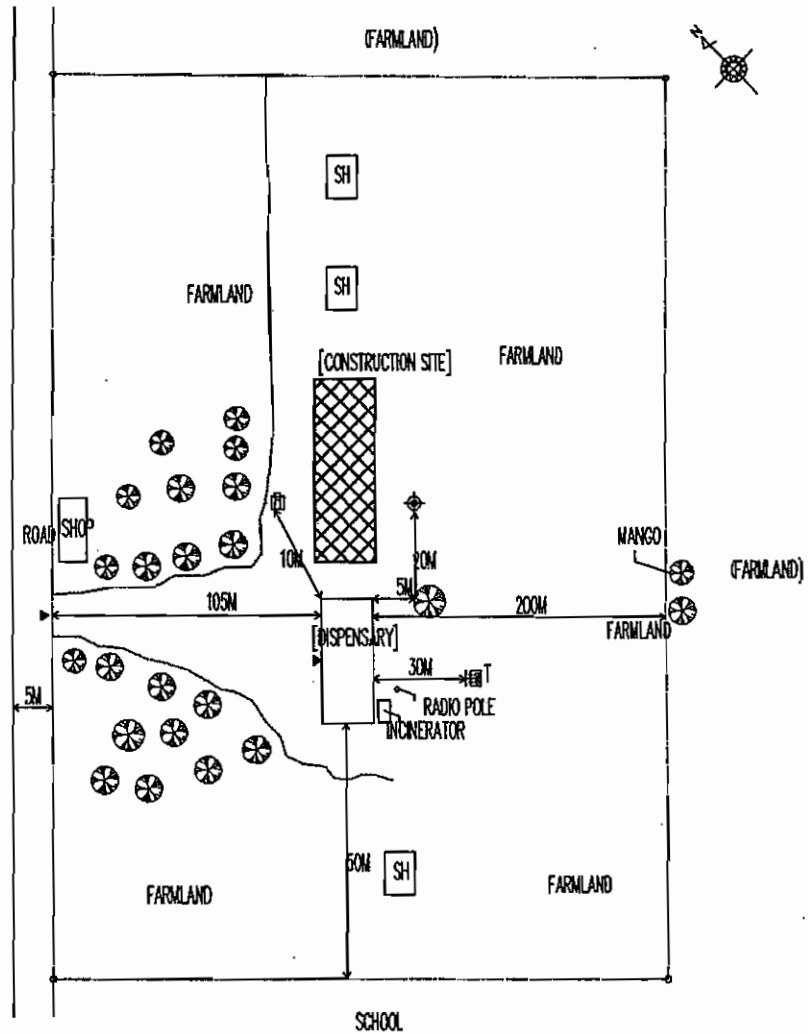
KHC-10 KHOLA HC (KASUNGU DS) DISPENSARY

THE PROJECT FOR THE RURAL HEALTH FACILITIES IMPROVEMENT IN THE REPUBLIC OF MALAWI

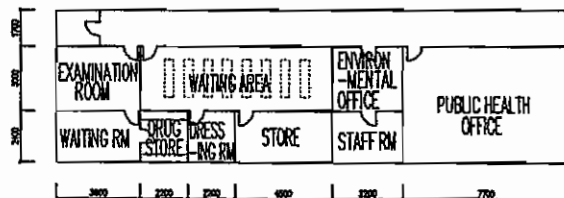
K M

SITE PLAN

SH	STAFF HOUSE
SW	SHOWER
T	TOILET
WT	WATER TANK
ST	SEPTIC TANK
PP(N)	PLACENTA PIT(NEW)
PP(O)	PLACENTA PIT(OLD)
GS	GUARDIAN SHELTER
⊕	SOIL TEST POINT
B	BORE HOLE



[DISPENSARY]



0 5M
EXISTING PLAN

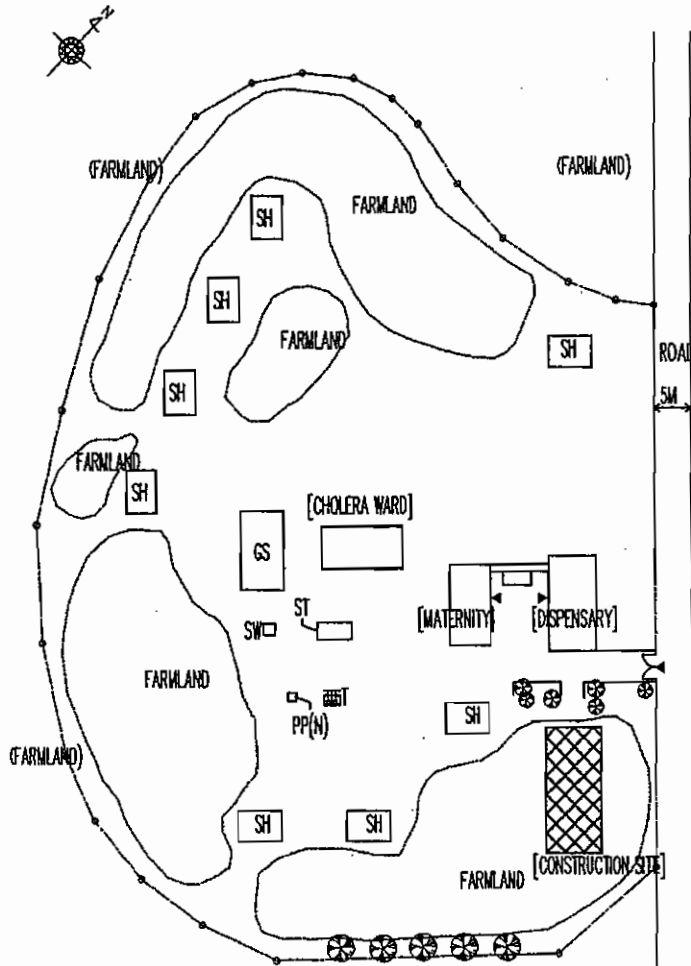
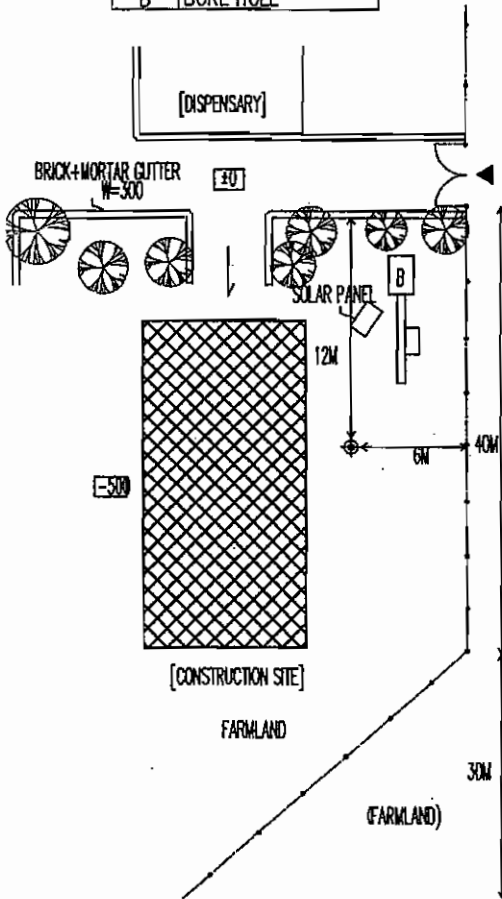
KHC-11 Chamwabvi Dispensary (KASUNGU DS) MATERNITY

THE PROJECT FOR THE RURAL HEALTH FACILITIES IMPROVEMENT IN THE REPUBLIC OF MALAWI

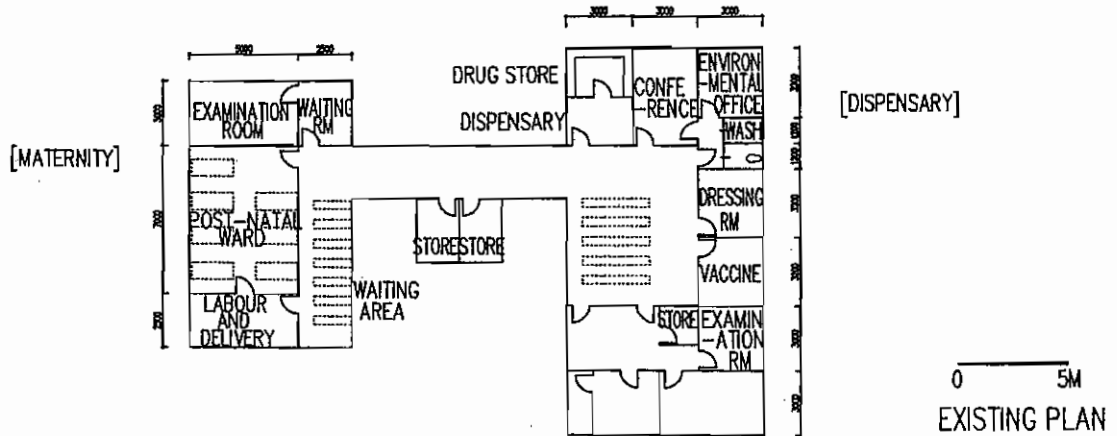
KM

SH	STAFF HOUSE
SW	SHOWER
T	TOILET
WT	WATER TANK
ST	SEPTIC TANK
PP(N)	PLACENTA PIT(NEW)
PP(O)	PLACENTA PIT(OLD)
GS	GUARDIAN SHELTER
⊕	SOIL TEST POINT
B	BORE HOLE

SITE PLAN



計画部分配置図



[DISPENSARY]

[MATERNITY]

0 5M
EXISTING PLAN

LHC-1 CHIWAMBA HC(LILONGWE DS) DISPENSARY

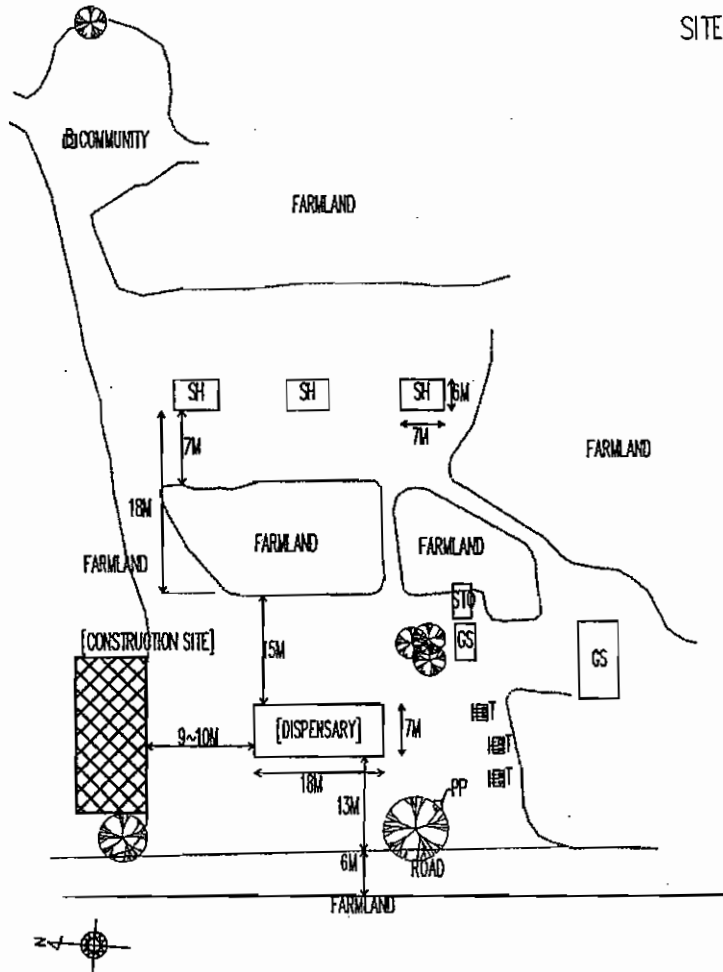
THE PROJECT FOR THE RURAL HEALTH FACILITIES IMPROVEMENT IN THE REPUBLIC OF MALAWI

KM

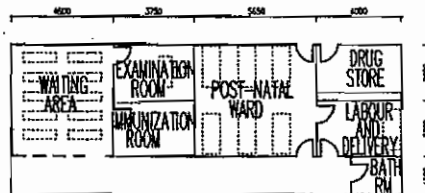
Q

SH	STAFF HOUSE
SW	SHOWER
T	TOILET
WT	WATER TANK
ST	SEPTIC TANK
PP(N)	PLACENTA PIT(NEW)
PP(O)	PLACENTA PIT(OLD)
GS	GUARDIAN SHELTER
⊕	SOIL TEST POINT
B	BORE HOLE

SITE PLAN



[MATERNITY]

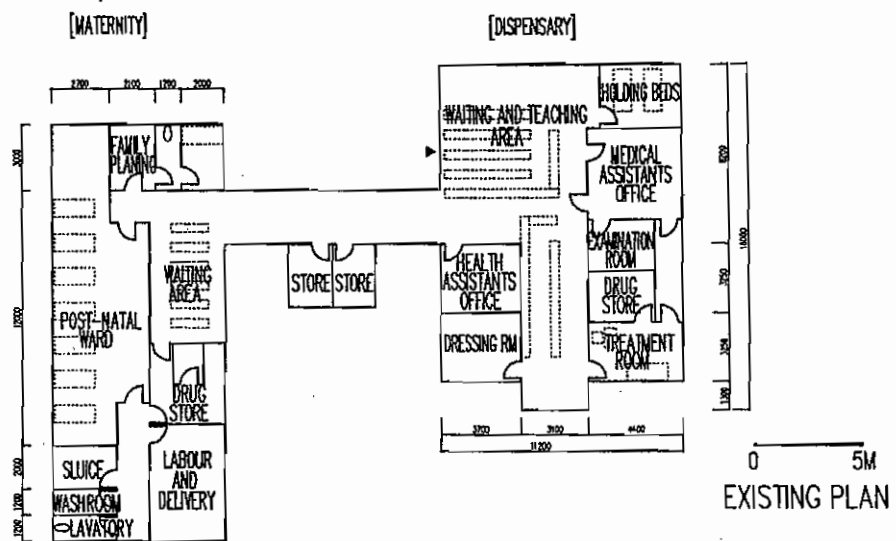
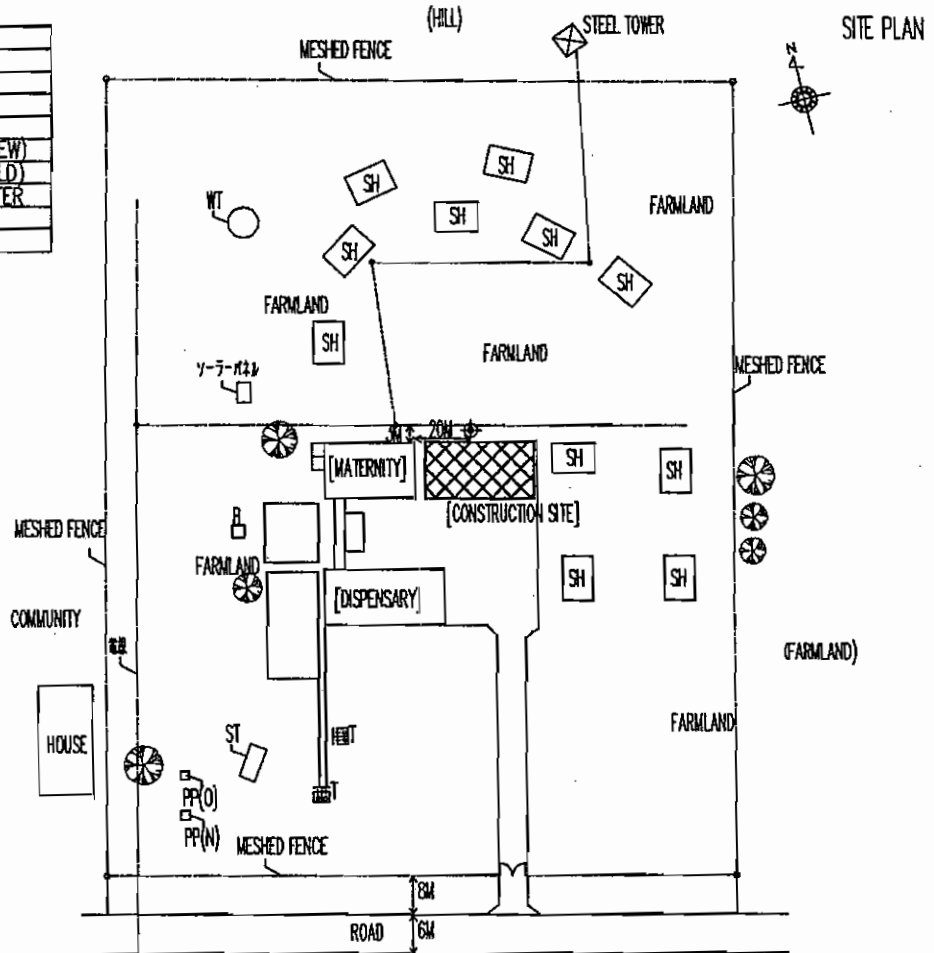


0 5M
EXISTING PLAN

LHC-3 MBANGOMBE 1 HC(LILONGWE DS) DISPENSARY
THE PROJECT FOR THE RURAL HEALTH FACILITIES IMPROVEMENT IN THE REPUBLIC OF MALAWI

KM

SH	STAFF HOUSE
SW	SHOWER
T	TOILET
WT	WATER TANK
ST	SEPTIC TANK
PP(N)	PLACENTA PIT(NEW)
PP(O)	PLACENTA PIT(OLD)
GS	GUARDIAN SHELTER
⊕	SOIL TEST POINT
B	BORE HOLE



LHC-2 MTENTHERA HC (LILONGWE DS) MATERNITY
 THE PROJECT FOR THE RURAL HEALTH FACILITIES IMPROVEMENT IN THE REPUBLIC OF MALAWI

KM

1-3 Equipment List

District hospitals (2 sites)

Target institutions	Item no.	Equipment name	Quantity
1. Rumphi district hospital			
1-1 Maternity unit	A-1	Bedside lockers	36
	A-2	Beds	36
1-2 Paediatrics unit	A-3	Bedside lockers	24
	A-4	Beds	24
2. Mzimba district hospital			
Paediatrics unit	A-5	Bedside lockers	24
	A-6	Beds	24

Health centres (55sites)

Departments	Items no.	Equipment name	Quantity
1. Dispensary block			
1-1 Examination room	B-1	Weighing scales, adult	25
	B-2	Diagnostic equipment sets	49
	B-3	Sphygmomanometers	31
	B-4	Examination couches	22
1-2 Treatment room	B-5	Instrument sets, minor surgical sets	157
	B-6	Examination couches	45
1-3 Dressing room	B-7	Instrument sets, minor surgical sets	108
2. Maternity block			
2-1 Delivery room	B-8	Delivery tables	52
	B-9	Suction units, manual	29
	B-10	Resuscitators, manual, infant and adult	47
	B-11	Instrument sets, delivery and suturing	130
	B-12	Sphygmomanometers	29
	B-13	Weighing scales, baby	5
	B-14	Light with battery back-up	52
2-2 Maternity ward	B-15	Hospital beds with mattress, adult	98
	B-16	Bedside lockers	249
2-3 Holding room	B-17	Hospital beds with mattress, adult	50
	B-18	Drip stands, double hook, with castors	31

km

Q

1-4 Break-down of Equipment List for each Health Centre

No.	Equipment name	Districts					Rumphi					Mzimba																																
		1	2	3	4	5	6	Sub-ttl	7	8	9	10	11	12	13	14	15	16	17	18	19	20	21	22	23	24	25	26	27	28	29	30												
B-1	Weighing scales, adult	0	1	0	1	1	0	3	0	0	1	0	1	0	1	0	1	0	1	0	1	0	1	0	1	1	0	1	1	0	1	1	0	1	0									
B-2	Diagnostic equipment sets	1	1	1	0	1	5	1	1	1	1	1	0	1	1	1	1	1	1	1	1	1	1	1	1	1	1	1	1	1	1	1	1	1	1									
B-3	Sphygmomanometers	1	1	0	1	1	0	4	1	0	1	1	0	0	1	0	1	0	1	1	1	0	1	0	1	1	0	1	1	0	1	1	1	1	1	1								
B-4	Examination couches	0	1	0	0	0	1	0	0	0	1	1	0	0	1	0	1	0	1	0	1	0	1	1	1	1	0	1	0	1	0	1	0	1	0	0	0							
B-5	Instrument sets, minor surgical sets	3	3	3	3	3	18	3	3	2	3	3	0	3	3	3	3	3	3	3	3	3	3	3	3	3	3	3	3	3	3	3	3	3	3	3	3	3						
B-6	Examination couches	1	1	1	0	1	5	1	1	1	1	1	0	0	1	1	1	1	1	1	1	1	1	1	1	1	1	1	1	1	1	1	1	1	1	1	0	1						
B-7	Instrument sets, minor surgical sets	2	2	2	2	2	12	2	2	2	2	2	0	2	2	2	2	2	2	2	2	2	2	2	2	2	2	2	2	2	2	2	2	2	2	2	2	2	2					
B-8	Delivery tables	0	2	2	2	2	0	8	1	1	0	0	0	0	1	1	0	1	1	0	1	1	2	0	2	0	0	1	2	1	0	1	2	1	0	1	1	1						
B-9	Suction units, manual	0	0	1	0	0	1	1	1	0	1	0	0	1	0	0	1	1	1	0	1	1	0	1	1	0	1	1	0	1	1	1	1	0	0	1	0	1	0					
B-10	Resuscitators, manual, infant and adult	0	1	0	1	1	4	1	1	1	1	1	1	0	0	1	1	1	1	1	1	1	1	1	1	1	1	1	1	1	1	1	1	1	1	1	1	1	1	1				
B-11	Instrument sets, delivery and suturing	3	3	3	3	0	3	15	3	3	0	3	3	0	0	3	3	3	3	3	3	3	3	3	3	3	3	3	3	3	3	3	3	3	3	3	3	3	3	3	3			
B-12	Sphygmomanometers	1	1	1	1	0	1	5	1	1	0	0	0	0	0	1	0	1	0	1	1	1	0	0	1	0	1	0	1	0	1	0	1	0	1	0	1	0	1	0	1			
B-13	Weighing scales, baby	0	0	0	0	0	0	0	0	0	0	0	0	0	0	1	1	1	0	0	0	0	0	0	0	0	0	0	0	0	0	0	0	0	0	0	0	0	0	0	0	0		
B-14	Light with battery back-up	1	1	1	1	1	6	1	1	1	1	1	0	1	1	1	1	1	1	1	1	1	1	1	1	1	1	1	1	1	1	1	1	1	1	1	1	1	1	1	1	1		
B-15	Hospital beds with mattress, adult	2	0	0	4	1	0	7	0	5	2	0	5	3	0	0	2	0	0	1	0	2	0	0	2	0	0	3	4	0	2	0	0	3	4	0	0	2	0	0	2	0		
B-16	Bedside lockers	1	6	8	3	3	0	21	5	5	2	8	8	6	0	8	3	4	8	2	2	0	8	2	0	8	5	0	8	8	3	0	8	3	0	8	2	0	0	0	0	0	0	
B-17	Hospital beds with mattress, adult	1	0	0	1	2	0	4	0	2	2	0	2	0	0	2	0	1	0	0	2	0	0	2	0	2	0	2	0	2	0	2	0	2	0	2	0	2	0	0	0	0	0	0
B-18	Drip stands, double hook, with castors	0	0	0	0	1	0	1	1	0	1	1	1	0	1	0	1	0	1	1	1	1	1	1	1	1	0	1	0	1	0	1	0	0	1	0	0	1	0	1	0	1	0	1

KM

Q

Districts	Districts	Mzimba												Kasungu												Lilongwe			Total												
		31	32	33	34	35	36	37	38	39	40	41	Sub-ttl	42	43	44	45	46	47	48	49	50	51	52	Sub-ttl	53	54	55		Sub-ttl											
B-1	Equipment name	0	1	1	0	0	1	0	1	0	1	0	18	0	0	1	0	1	1	0	0	0	0	3	0	0	1	0	0	1	1	1	1	3	0	0	1	1	25		
B-2	Weighing scales, adult	1	0	0	1	0	1	1	1	1	0	30	1	1	1	1	1	1	1	1	1	1	1	11	1	1	1	1	1	1	1	1	1	3	1	1	1	1	49		
B-3	Diagnostic equipment sets	0	0	1	1	0	0	1	1	0	0	20	1	1	0	0	1	1	0	0	1	1	0	6	1	0	0	1	0	0	1	0	0	1	0	0	1	0	31		
B-4	Sphygmomanometers	0	1	0	0	0	1	1	1	1	0	16	1	0	0	0	1	1	0	0	1	1	0	5	0	0	0	0	0	0	0	0	0	0	0	0	0	0	22		
B-5	Examination couches	3	3	3	3	1	3	3	3	3	3	99	3	3	3	3	3	3	3	3	3	3	3	31	3	3	3	3	3	3	3	3	3	9	3	3	3	3	157		
B-6	Instrument sets, minor surgical sets	0	0	1	1	1	1	1	1	1	0	29	1	0	1	1	1	1	0	0	1	1	1	8	1	1	1	1	1	1	1	1	1	3	1	1	1	1	45		
B-7	Examination couches	2	2	2	2	2	2	2	2	2	2	68	2	2	2	2	2	2	2	2	2	2	2	22	2	2	2	2	2	2	2	2	2	6	2	2	2	2	108		
B-8	Instrument sets, minor surgical sets	0	2	0	1	2	2	2	1	1	2	30	1	0	1	1	0	0	1	0	2	2	2	10	2	1	0	0	1	0	2	1	1	4	2	1	1	1	52		
B-9	Delivery tables	1	1	1	1	0	1	1	1	0	1	22	0	0	1	0	0	0	0	0	1	0	1	4	1	0	0	0	0	0	1	0	1	2	1	0	1	0	29		
B-10	Suction units, manual	1	1	1	1	1	1	1	1	1	0	30	1	1	1	1	1	1	1	1	1	1	1	10	1	1	1	1	1	1	1	1	1	3	1	1	1	1	47		
B-11	Resuscitators, manual, infant and adult	2	3	2	3	0	3	3	3	3	3	81	3	3	0	3	3	3	1	81	3	3	0	3	3	26	3	3	0	3	3	3	0	3	2	8	3	3	2	8	130
B-12	Instrument sets, delivery and suturing	0	0	0	1	0	0	0	0	1	0	14	1	1	1	1	0	0	1	0	1	1	1	9	1	1	1	1	0	1	1	0	0	1	1	0	0	1	29		
B-13	Sphygmomanometers	0	0	0	0	0	0	0	0	0	0	5	0	0	0	0	0	0	0	0	0	0	0	0	0	0	0	0	0	0	0	0	0	0	0	0	0	0	5		
B-14	Weighing scales, baby	1	1	1	1	1	1	1	1	1	1	32	1	1	1	1	1	1	1	1	1	1	1	11	1	1	1	1	1	1	1	1	1	3	1	1	1	1	52		
B-15	Light with battery back-up	3	4	1	3	0	4	1	6	0	2	56	2	1	2	1	2	3	1	1	2	3	1	8	3	1	2	1	2	3	1	1	2	4	1	1	2	8	98		
B-16	Hospital beds with mattress, adult	3	2	1	4	5	7	7	5	4	4	153	7	1	8	2	3	4	3	4	3	4	8	8	56	8	3	4	8	8	8	8	3	8	19	8	3	8	19	249	
B-17	Bedside lockers	0	1	2	0	2	1	1	0	1	2	27	2	1	2	1	1	2	0	0	2	2	2	15	2	1	2	1	1	2	0	2	2	4	2	0	2	4	50		
B-18	Hospital beds with mattress, adult	1	0	1	1	0	1	1	1	1	1	23	0	0	1	0	1	1	1	1	1	1	0	6	1	1	0	1	1	1	0	1	0	1	1	0	0	1	31		
B-18	Drip stands, double hook, with castors	1	0	1	1	0	1	1	1	1	1	0	23	0	0	1	0	1	1	1	1	1	0	6	1	1	0	1	1	1	0	1	0	1	1	0	0	1	31		

Annex 2: Equipment and furniture list that Malawi side will procure

2-1 District hospitals

2-1-1 Rumphi district hospital

1) Maternity ward

Departments	Equipment name	Qty
1 Delivery room	① Delivery lights	2
	② O ₂ cylinders	2
	③ Heaters	1
	④ Sterilizers	1
	⑤ Vacuum extractors	4
	⑥ Baby scale	1
	⑦ Suction units	2
	⑧ Baby cots	4
	⑨ Drug shelves	2
	⑩ Instruments cabinet	2
	⑪ Delivery tables	4
	⑫ Drip stands	4
	⑬ Doctor's chairs	4
	⑭ Instruments carts	2
	⑮ Office cabinets	2
2 Labour room	① Foetal heart detectors	2
	② Drip stands	6
	③ Labour beds	6
3 Nursery	① Incubators	2
	② O ₂ concentrators	1
	③ O ₂ cylinders	1
	④ Phototherapy units	1
	⑤ Heaters	1
	⑥ baby scales	1
	⑦ Baby cots	6
	⑧ Screens	1
	⑨ Stools	2
4 Nurse station	① Autoclaves	1
	② Stool, metallic	1
	③ Office chairs	1
	④ Cupboard, metallic	1
	⑤ Desks, metallic	1
	⑥ Shelves, metallic	1
5 Post-natal ward 1 (Surgical deliveries) (12 beds)	① Drip stands	6
	② Screen	4
	③ Treatment carts	1
	④ Instruments carts	1
	⑤ Suction units	1
6 Post-natal ward 2 (Complicated deliveries) (12 beds)	① Drip stands	6
	② Screens	4
	③ Treatment carts	1
	④ Instruments carts	1
	⑤ Suction units	1
7 Post-natal ward 3 (Normal deliveries) (12 beds)	① Drip stands	6
	② Screens	4
	③ Treatment carts	1
	④ Instruments carts	1
	⑤ Suction units	1

2) Paediatrics ward

Departments	Equipment name	Qty
1 Serious case room	① Beds	2
	② Bed side lockers	2
	③ Drip stands	1
	④ Screens	1
	⑤ Treatment carts	1
	⑥ Instruments carts	1
	⑦ Suction units	1
	⑧ Nebulizers	1
	⑨ O ₂ cylinders	1
2 Isolation room	① Beds	4
	② Bed side lockers	4
	③ Drip stands	2
	④ Screens	2
	⑤ Treatment carts	1
	⑥ Instruments carts	1
	⑦ Suction units	1
	⑧ Nebulizers	1
3 Kitchen	① Lacks	2
	② Tables	1
	③ Shelves, metallic	2
	④ Cookers	2
4 Medicine store	① Lacks	8
5 Nurse station	① Autoclaves	1
	② Stools, metallic	1
	③ Office chairs	1
	④ Cupboard, metallic	1
	⑤ Desks, metallic	1
	⑥ Shelves, metallic	1
6 Malnutrition room (12 beds)	① Drip stands	6
	② Screens	4
	③ Treatment carts	1
	④ Instruments carts	1
	⑤ Suction units	1
	⑥ Nebulizers	1
7 Paediatrics ward (12 beds)	① Drip stands	6
	② Screens	4
	③ Treatment carts	1
	④ Instruments carts	1
	⑤ Suction units	1
	⑥ Nebulizers	1

KM

Q

2-1-2 Mzimba district hospital paediatrics ward

Departments	Equipment name	Qty
1 Kitchen	① Lacks	2
	② Tables	1
	③ Shelves, metallic	2
	④ Cookers	2
2 Serious patient	① Beds	4
	② Bedside lockers	4
	③ Drip stands	2
	④ Screens	2
	⑤ Treatment carts	1
	⑥ Instrument carts	1
	⑦ Suction units	1
	⑧ Nebulizers	1
	⑨ O ₂ cylinders	1
3 Nurse station	① Autoclaves	1
	② Stools, metallie	1
	③ Stool, office	1
	④ Shelves, metallic	1
	⑤ Desks, metallic	1
	⑥ Shelves, metallic	1
4 Medicine store	① Lacks	8
5 Isolation room	① Beds	4
	② Bedside lockers	4
	③ Drip stands	2
	④ Screens	2

Departments	Equipment name	Qty
6 Malnutrition room (12 beds)	⑤ Treatment carts	1
	⑥ Instruments carts	1
	⑦ Suction units	1
	⑧ Nebulizers	1
	① Beds	12
	② Bedside lockers	12
	③ Drip stands	6
	④ Screens	4
7 Paediatrics ward (12 beds)	⑤ Treatment carts	1
	⑥ Instruments carts	1
	⑦ Suction units	1
	⑧ Nebulizers	1
	① Drip stands	6
	② Screens	4
	③ Treatment carts	1
	④ Instruments carts	1
	⑤ Suction units	1
	⑥ Nebulizers	1

KM

Q

2.2 Health Centres

2.2.1 Dispensary Block

Room	No.	Equipment	Quantity
(1) Examination room	1	Weighing scale, baby, basin type	1
	2	Weighing scale, toddler, spring type	1
	3	Screen	1
	4	Water container 20 litters	1
	5	Chair, wood	2
	6	Cupboard, low, wood	1
	7	Desk, wood	1
	8	Dustbin, with lid	1
	9	Filing cabinet	1
(2) Family planning room	10	Stool, wood	1
	11	Chair, wood	2
	12	Desk, wood	1
	13	Dustbin, with lid	1
(3) Treatment room	14	Stove, charcoal	1
	15	Stove, kerosene	1
	16	Sterilizing unit	1
	17	Drip stand	1
	18	Screen	1
	19	Stretcher	1
	20	Trolley, instrument	1
	21	Water container, 20 litters	1
	22	Cupboard, high, wood	1
	23	Dustbin, with lid	1
	24	Stool, wood	2
(4) Dressing room	25	Stove, kerosene	1
	26	Centrifuge	1
	27	haemoglobin meter	1
	28	Sterilizing unit	1
	29	Water container 20 litters	1
	30	Chair, wood	1
	31	Cupboard, low, wood	1
	32	Dustbin, with lid	1

KM

Q

Room	No.	Equipment	Quantity
	33	Shelves, wood	1
	34	Stool, wood	1
(5) Basket	35	Basket	1
	36	Cupboard, high, wood	1
	37	Shelves, wood	1
(6) Store	38	Cold box	1
	39	Refrigerator	1
	40	Vaccine carrier	2
	41	Cupboard, high, wood	1
	42	Shelves, wood	4
(7) Waiting room (male)	43	Hospital bed	1
	44	Bedside locker	1
	45	Drip stand	1
	46	Dustbin, with lid	1
(8) Waiting room (female)	47	Bedside locker	1
	48	Drip stand	1
	49	Dustbin, with lid	1
(9) Office	50	Stool, wood	1
	51	Chair, wood	1
	52	Desk, wood	1
	53	Dustbin, with lid	1
(10) VCT	54	Stool, wood	1
	55	Chair, wood	1
	56	Desk, wood	1
	57	Dustbin, with lid	1
(11) VCT waiting room	58	Bench	2

KM

Q

2-2-2 Maternity Block

Room	No.	Equipment	Quantity
(12) Labour and delivery room	59	Lamp pressure, paraffin	1
	60	Stove, charcoal	1
	61	Stove, kerosene	1
	62	Sterilizing unit	1
	63	Baby cot	1
	64	Drip stand	1
	65	Screen	1
	66	Stool, surgeon's	1
	67	Trolley, instrument	1
	68	Water container 20 liters	1
	69	Cupboard, low, metal	1
	70	Dustbin, with lid	1
(13) Store	71	Shelves, wood	2
(14) Post-natal ward Ante-natal ward	72	Lamp, pressure, paraffin	2
	73	Drip stand	2
	74	Screen	2
	75	Water container 20 liters	2
	76	Chair, wood	8
	77	Dustbin, with lid	2
(15) Examination room	78	Weighing scale, adult	1
	79	Examination couch	1
	80	Weighing scale, baby, basin type	1
	81	Water container 20 liters	1
	82	Chair, wood	2
	83	Desk, wood	1
	84	Dustbin, with lid	1
(16) Waiting room (female)	85	Bedside locker	1
	86	Dustbin, with lid	1
(17) Drug office	87	Basket	1
	88	Cupboard, high, wood	1
	89	Shelves, wood	1
(18) Office	90	Stool, wood	1
	91	Bench	1

KM

Q

Room	No.	Equipment	Quantity
	92	Desk, wood	1
	93	Dustbin, with lid	1
(19) Nurses/midwife room	94	Lamp, pressure, paraffin	1
	95	Cupboard, drugs	1
	96	Water container 20 litters	1
	97	Basket	2
	98	Bench	1
	99	Chair, wood	1
	100	Desk, wood	1
(20) VCT	101	Stool, wood	1
	102	Chair, wood	1
	103	Desk, wood	1
	104	Dustbin, with lid	1
(21) VCT waiting room	105	Bench	2

KM

Q-

Annex-3 Tentative Implementation Schedule

Schedule	Stage		Flow and Works
August 2003	Application		Request ↓
October 2005	Study	Preliminary	Preliminary study ↓
February 2006		Basic Design	Basic Design Study ↓
March 2006	Appraisal & Approval		Appraisal of project ↓
April 2006			Inter Ministerial Consultation ↓
August 2006			Presentation of Draft Notes ↓
October 2006			Approval by the Cabinet
November 2006	Implementation		E/N ↓
December 2006			Banking Arrangement ↓
December 2006			Consultant Contract ↓
December 2006			Detailed Design and Tender Documents ↓
April 2007			Tendering and Evaluation ↓
May 2007			Construction Contract ↓
February 2008			Completion of Construction ↓
March 2008			Operation

KM

Q

Appendix-6 Details of Equipment Quantity for Each Health Centre

(1) Rumphi District

Code No.	Name of Equipment	Rumphi District					
		RHC-1	RHC-3	RHC-4	RHC-5	RHC-6	RHC-7
B-1	Weighing scales, adult	0	1	0	1	1	0
B-2	Diagnostic equipment sets	1	1	1	1	0	1
B-3	Sphygmomanometers	1	1	0	1	1	0
B-4	Examination couches	0	1	0	0	0	0
B-5	Instrument sets, minor surgical sets	3	3	3	3	3	3
B-6	Examination couches	1	1	1	0	1	1
B-7	Instrument sets, minor surgical sets	2	2	2	2	2	2
B-8	Delivery tables	0	2	2	2	2	0
B-9	Suction units, manual	0	0	1	0	0	0
B-10	Resuscitators, manual, infant and adult	0	1	0	1	1	1
B-11	Instrument sets, delivery and suturing	3	3	3	3	0	3
B-12	Sphygmomanometers	1	1	1	1	0	1
B-13	Weighing scales, baby	0	0	0	0	0	0
B-14	Light with battery back-up	1	1	1	0	1	0
B-15	Hospital beds with mattress, adult	2	0	0	4	1	0
B-16	Bedside lockers	1	6	8	3	3	0
B-17	Hospital beds with mattress, adult	1	0	0	1	2	0
B-18	Drip stands, double hook, with castors	0	0	0	0	1	0

(2) Mzimba District

Code No.	Name of Equipment	Mzimba District 1											
		MHC-1	MHC-2	MHC-3	MHC-4	MHC-5	MHC-6	MHC-7	MHC-8	MHC-9	MHC-10	MHC-12	MHC-12
B-1	Weighing scales, adult	0	0	1	0	1	0	1	1	0	1	0	0
B-2	Diagnostic equipment sets	1	1	1	1	1	0	1	1	1	1	1	1
B-3	Sphygmomanometers	1	0	1	1	0	0	0	0	1	0	1	1
B-4	Examination couches	0	0	0	1	1	0	0	1	0	1	0	1
B-5	Instrument sets, minor surgical sets	3	3	2	3	3	0	3	3	3	3	3	3
B-6	Examination couches	1	1	1	1	1	0	0	1	1	1	1	1
B-7	Instrument sets, minor surgical sets	2	2	2	2	2	0	2	2	2	2	2	2
B-8	Delivery tables	1	1	0	0	0	0	0	1	1	0	1	1
B-9	Suction units, manual	1	1	0	1	0	1	0	0	1	1	1	0
B-10	Resuscitators, manual, infant and adult	1	1	1	1	1	1	0	0	1	1	1	1
B-11	Instrument sets, delivery and suturing	3	3	0	3	3	3	0	0	3	3	3	3
B-12	Sphygmomanometers	1	1	0	0	0	0	0	0	1	0	1	1
B-13	Weighing scales, baby	0	0	0	0	0	0	0	1	1	1	0	0
B-14	Light with battery back-up	1	1	1	1	1	0	0	1	1	1	0	1
B-15	Hospital beds with mattress, adult	0	5	2	0	5	3	0	0	0	2	0	0
B-16	Bedside lockers	5	5	2	8	8	6	0	8	3	4	8	2
B-17	Hospital beds with mattress, adult	0	2	2	0	2	0	0	2	0	1	0	0
B-18	Drip stands, double hook, with castors	1	0	1	1	1	1	0	1	0	1	1	1

Continued

Code No.	Name of Equipment	Mzimba District 2											
		MHC-13	MHC-14	MHC-15	MHC-16	MHC-17	MHC-18	MHC-19	MHC-20	MHC-21	MHC-22	MHC-23	MHC-24
B-1	Weighing scales, adult	1	1	1	0	1	0	0	1	1	0	0	1
B-2	Diagnostic equipment sets	1	1	1	1	1	1	1	0	0	1	0	1
B-3	Sphygmomanometers	0	1	1	1	1	1	0	0	1	1	0	0
B-4	Examination couches	1	0	1	0	0	0	0	1	0	0	0	0
B-5	Instrument sets, minor surgical sets	3	3	3	3	3	3	3	3	3	3	1	3
B-6	Examination couches	1	1	1	1	0	1	0	0	1	1	1	1
B-7	Instrument sets, minor surgical sets	2	2	2	2	2	2	2	2	2	2	2	2
B-8	Delivery tables	2	1	2	1	1	1	0	2	0	1	2	2
B-9	Suction units, manual	1	1	1	0	1	0	1	1	1	1	0	1
B-10	Resuscitators, manual, infant and adult	1	1	1	1	1	1	1	1	1	1	1	1
B-11	Instrument sets, delivery and suturing	3	3	3	3	3	3	2	3	2	3	0	3
B-12	Sphygmomanometers	0	1	1	1	0	1	0	0	0	1	0	0
B-13	Weighing scales, baby	0	0	1	0	1	0	0	0	0	0	0	0
B-14	Light with battery back-up	1	0	1	0	0	1	1	1	1	1	1	1
B-15	Hospital beds with mattress, adult	3	4	8	0	2	0	3	4	1	3	0	4
B-16	Bedside lockers	8	3	8	8	2	0	3	2	1	4	5	7
B-17	Hospital beds with mattress, adult	2	0	2	0	0	0	0	1	2	0	2	1
B-18	Drip stands, double hook, with castors	0	1	1	1	0	1	1	0	1	1	0	1

Continued

Code No.	Name of Equipment	Mzimba District 3											
		MHC-25	MHC-26	MHC-27	MHC-28	MHC-29	MHC-30	MHC-31	MHC-32	MHC-33	MHC-34	MHC-35	
B-1	Weighing scales, adult	0	1	0	1	0	0	0	1	0	1	0	0
B-2	Diagnostic equipment sets	1	1	1	1	0	1	1	1	1	1	0	0
B-3	Sphygmomanometers	1	1	1	0	0	1	1	1	1	0	0	0
B-4	Examination couches	1	1	1	1	0	1	1	1	1	1	0	0
B-5	Instrument sets, minor surgical sets	3	3	3	3	3	3	3	3	3	3	3	3
B-6	Examination couches	1	1	1	1	0	1	1	1	1	1	0	0
B-7	Instrument sets, minor surgical sets	2	2	2	2	2	2	2	2	2	2	2	2
B-8	Delivery tables	2	1	1	2	0	1	2	1	1	2	0	0
B-9	Suction units, manual	1	1	0	1	0	0	1	1	0	1	0	0
B-10	Resuscitators, manual, infant and adult	1	1	1	1	0	1	1	1	1	1	0	0
B-11	Instrument sets, delivery and suturing	3	3	3	3	1	3	3	3	3	3	1	1
B-12	Sphygmomanometers	0	0	1	0	1	1	0	0	1	0	1	1
B-13	Weighing scales, baby	0	0	1	0	0	0	0	0	1	0	0	0
B-14	Light with battery back-up	0	1	1	1	1	1	0	1	1	1	1	1
B-15	Hospital beds with mattress, adult	1	6	0	2	1	2	1	6	0	2	1	1
B-16	Bedside lockers	7	5	4	4	8	7	7	5	4	4	8	8
B-17	Hospital beds with mattress, adult	1	0	1	2	2	2	1	0	1	2	2	2
B-18	Drip stands, double hook, with castors	1	1	1	1	0	0	1	1	1	1	0	0

(3) Kasungu District

Code No.	Name of Equipment	Kasungu District										
		KHC-1	KHC-2	KHC-3	KHC-4	KHC-5	KHC-6	KHC-7	KHC-8	KHC-9	KHC-10	KHC-11
B-1	Weighing scales, adult	0	0	1	0	1	1	0	0	0	0	0
B-2	Diagnostic equipment sets	1	1	1	1	1	1	1	1	1	1	1
B-3	Sphygmomanometers	1	1	0	0	1	1	0	0	1	1	0
B-4	Examination couches	1	0	0	0	1	0	0	1	1	1	0
B-5	Instrument sets, minor surgical sets	3	3	3	3	3	3	3	3	3	1	3
B-6	Examination couches	1	0	1	1	1	0	0	1	1	1	1
B-7	Instrument sets, minor surgical sets	2	2	2	2	2	2	2	2	2	2	2
B-8	Delivery tables	1	0	1	1	0	0	1	0	2	2	2
B-9	Suction units, manual	0	0	1	0	0	0	0	1	0	1	1
B-10	Resuscitators, manual, infant and adult	1	1	1	1	1	1	1	1	0	1	1
B-11	Instrument sets, delivery and suturing	3	3	0	3	3	2	3	3	0	3	3
B-12	Sphygmomanometers	1	1	1	1	0	1	1	0	1	1	1
B-13	Weighing scales, baby	0	0	0	0	0	0	0	0	0	0	0
B-14	Light with battery back-up	1	1	1	0	1	1	1	1	1	0	1
B-15	Hospital beds with mattress, adult	2	1	2	1	2	3	1	1	2	8	8
B-16	Bedside lockers	7	1	8	2	3	4	3	4	8	8	8
B-17	Hospital beds with mattress, adult	2	1	2	1	1	2	0	0	2	2	2
B-18	Drip stands, double hook, with castors	0	0	1	0	1	1	1	0	1	0	1

(4) Lilongwe District

Code No.	Name of Equipment	Lilongwe D		
		LHC-1	LHC-2	LHC-3
B-1	Weighing scales, adult	0	0	1
B-2	Diagnostic equipment sets	1	1	1
B-3	Sphygmomanometers	1	0	0
B-4	Examination couches	0	0	0
B-5	Instrument sets, minor surgical sets	3	3	3
B-6	Examination couches	1	1	1
B-7	Instrument sets, minor surgical sets	2	2	2
B-8	Delivery tables	2	1	1
B-9	Suction units, manual	1	0	1
B-10	Resuscitators, manual, infant and adult	1	1	1
B-11	Instrument sets, delivery and suturing	3	3	2
B-12	Sphygmomanometers	1	0	0
B-13	Weighing scales, baby	0	0	0
B-14	Light with battery back-up	1	0	0
B-15	Hospital beds with mattress, adult	1	1	2
B-16	Bedside lockers	8	3	8
B-17	Hospital beds with mattress, adult	2	0	2
B-18	Drip stands, double hook, with castors	1	0	0

Appendix-7 Reference

The Project for Improvement of Rural Health Care Facilities in the Republic of Malawi

No.	Title	Type	Original/ Copy	Issued by	Date of Issue
1	Malawi: Demographic and Health Survey 2000	Booklet	E-data	USAID/Macro	Aug. 2000
2	Health Sector Support Project(HSSP) Project Appraisal Document	Booklet	E-data	WB	2004
3	Health Sector Support Project(HSSP),Environment	Booklet	E-data	WB	n.a.
4	Health Sector Support Project(HSSP),Resettlement	Booklet	E-data	WB	2004
5	Better Health Outcomes from Limited Resources, Focusing on Priority Services in Malawi	Booklet	E-data	WB	2002
6	Baseline Survey of Physical Assets Providing Medical Services to the General Population, Kasungu District	Booklet	Copy	EU/MoHP	Aug. 1998
7	Baseline Survey of Physical Assets Providing Medical Services to the General Population, Rumphi District	Booklet	Copy	EU/MoHP	Aug. 1998
8	Baseline Survey of Physical Assets Providing Medical Services to the General Population, Mzimba District	Booklet	Copy	EU/MoHP	Jan. 1998
9	Malawi: Human Resources for Health Sector Strategic Plan 2003 to 2013 (Draft)	Booklet	E-data	MoHP	Oct. 2003
10	Malawi: Health Management Information Bulletin special Issue 2002	Booklet	E-data	MoHP	2002
11	Malawi: Health Information Bulletin, Performance Data Analysis of Tertiary Care Facilities	Booklet	E-data	MoHP	2002
12	Fourth National Health Plan 1999 to 2004	Booklet	E-data	MoHP	n.a.
13	Malawi: Millennium Development Goals Report 2003	Booklet	E-data	MEPD	2003
14	Nutrition of Young Children and Mothers in Malawi	Booklet	E-data	Macro	2001
15	Malawi National Health Plan 1999 to 2004 Volume 2 National Health Facilities	Booklet	E-data	MoHP	1999
16	EHP: Malawi Essential Health Package 2002/3 FY Plan of Action "Reaching an EHP Implementation Plan"	Booklet	E-data	MoHP	2002
17	Population and Housing Census 1998	Booklet	E-data	NSO	1998
18	Malawi Poverty Reduction Strategy Paper	Booklet	E-data	MFEP	2002
19	Health Information System: National Policy and Strategy	Booklet	Copy	MoHP	n.a.
20	Master plan study on strengthening primary health care services in the Republic of Malawi : final report	Booklet	Copy	JICA	1998
21	Appraisal Report Support to the Health Sector Programme	Booklet	Copy	AfDB	Sep. 2005
22	Appraisal Report Rural Health CareSupport Project III	Booklet	Copy	AfDB	Sep. 2000
23	Human Development Report 2002 Human Development Index	Booklet	Copy	UNDP	n.a.
24	Road Map for Accelerating the Reduction Maternal and Newborn Mortality and Morbidity in Malawi	Booklet	Copy	MoH	Sep. 2005
25	Minimum Requirements Health Facilities	Booklet	Copy	CHAM	Nov. 2001
26	Malawi National Health Physical Assets Management Policy	Booklet	Copy	MoHP	Nov. 2002
27	Supply and Delivery of Medical Equipment	Booklet	Copy	MoH	Oct. 2005
28	To the Year 2020: A Vision for the Health Sector in Malawi	Booklet	Original	n.a.	n.a.
29	SWAp Financial Monitoring Report for Half Year Ended 31st December 2005	Booklet	Original	MoH	Mar. 2006
30	Rumphi District Socio Economic Profile	Booklet	Original	MoH	Jun. 2002
31	Kasungu District Implementation Plan (DIP) 2005/2006	Booklet	Copy	Kasungu DHO	Feb. 2005
32	Rumphi 2005/2006	Booklet	Original	Rumphi DHO	Feb. 2005
33	Mzimba District Implementation Plan (DIP) for 2006/2007	Booklet	Copy	Mzimba DHO	Feb. 2006