

4-2 Explanation of Draft Report

**Minutes of Discussions
on the Basic Design Study
on the Project for the Construction
of the Museum Center for Thracian Arts
of East Rodopi Mountains
in the Republic of Bulgaria
Explanation of Draft Report**

In November 2005, the Japan International Cooperation Agency (hereinafter referred to as "JICA") dispatched the Basic Design Study team on The Project for the Construction of the Museum Center for Thracian Arts of East Rodopi Mountains (hereinafter referred to as "the Project") to the Republic of Bulgaria (hereinafter referred to as "Bulgaria"), and through discussions, field survey, and technical examination of the results in Japan, JICA prepared a draft report of the study.

In order to explain and to consult with concerned officials of Bulgaria on the components of the draft report, JICA sent to Bulgaria the Draft Report Explanation Team (hereinafter referred to as "the Team"), which is headed by Mr. Keizo KAGAWA, the Resident Representative of the JICA Bulgaria Office, from February 19th to 26th, 2006.

As a result of discussions, both sides confirmed the main items described on the attached sheet.

Sofia, 24 February, 2006



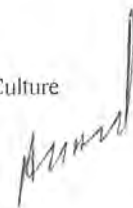
Keizo KAGAWA
Leader
Basic Design Study Team
Japan International Cooperation Agency



Ivan Danev TOKADJIEV
Deputy Minister
Ministry of Culture
The Republic of Bulgaria



Georgi Dimitrov UGRINOV
Director
National Institute for Monuments of Culture
The Republic of Bulgaria



ATTACHMENT

1. Components of the Draft Report

The Bulgarian side has agreed and accepted in principle the components of the draft report explained by the Team.

Modifications described in Annex – 1 were requested by Bulgarian side, and will be reflected in the Basic Design Study Report.

The final decision will be made by the Government of Japan based on the examination of the result of the Basic Design Study.

2. Japan's Grant Aid Scheme

The Bulgarian side has understood the Japan's Grant Aid Scheme and the necessary undertakings to be taken by the Government of Bulgaria as explained by the Team and described in Annex – 4 and Annex – 5 of the Minutes of Discussions signed by both sides on 21 November 2005. It is reconfirmed as described in Annex – 2.

3. Schedule of the Study

JICA will complete the final report in accordance with the confirmed items and send it to the Government of Bulgaria by the end of April, 2006.

4. Other Relevant Issues

4-1 Both sides have agreed that the components of Japan's grant aid for the Project are as follows:

- construction of the museum center for exhibition, lecturing and conservation/research.
- making the replica of Alexandrovo Tomb and procurement of the equipment for exhibition,
- procurement of the equipment for lecturing and research.

4-2 Right after the cabinet of Japan decides the implementation of the Project, the Ministry of Culture takes the responsibility to offer to the Council of Ministers of Bulgaria a draft resolution for the implementation of the project and for the exemption from VAT and other taxes of the Project, according to the Bulgarian legislation. The Ministry of Culture makes best efforts to finish the procedure of tax exemption within two and a half months.

4-3 The Ministry of Culture shall provide all necessary data for making the replica of Alexandrovo Tomb until the Exchange of Notes, and after the signing of agreement for the consulting services the Ministry of Culture presents that data to the Consultant.



4-4 Regarding the artifacts and archeological remains in the Project site. Japanese side received the outline survey report on it and both sides have agreed that there are no artifacts and archeological remains affecting the implementation of the Project.

4-5 The monitor cameras for the tomb should be set up by the Ministry of Culture until the opening of the Museum Center at the location indicated in the Annex - 3.

4-6 Both sides have agreed the obligations of recipient country on the following table.

Item	Estimation (BGN)	Organization	Schedule (Deadline)
Ground leveling of the construction site,	51,000 BGN	Haskovo Municipality	Before the commencement of the construction work
Cleaving the access road		Haskovo Municipality	Before the commencement of the construction work
Construction and paving of the walkway from the Museum center to the tomb		Haskovo Municipality	Before the opening of the Museum center
Electricity	152,000 BGN	Haskovo Municipality	Two mouths before the completion of the construction work
Telephone line			
Water supply			
Fixtures, office furniture and equipment including a rolling tower or a lifter	13,000 BGN	Haskovo Municipality	Before the opening of the Museum center
Attendance to the excavation work for the construction	----	Ministry of Culture	During the excavation work of the construction work
Assignment of the counterpart	-----	Ministry of Culture	Before the signing of the agreement for consulting services
Construction permission	-----	(Applicant:) Ministry of Culture	Before the commencement of the construction work

4-7 The Ministry of Culture shall guarantee the budget for working and maintenance of the Museum center

Estimated Maintenance Expense

Item	(BGN/ Year)	Computation Condition*
Cleaning Fee	7,300	
Electricity Charge	22,800	Lighting, air conditioning, etc.
Water Charge	640	For staff and visitor
Septic Tank Maintenance Fee	1,400	
Total	32,140	

*Estimated the number of visitor to be 10 thousand a year.

(73)

Amor

Bl

4-8 The Ministry of Culture shall guarantee the assignment of staff members to the Museum center.

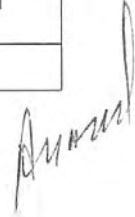
The following number of staff members will be necessary.

Position	Director	Curator	Restorer	Guide	Account-ant	Security Guard	Cleaner	Mainte-nance	Total
No.	1	1	1	*2	1	**4/4	1	***	

* The number will vary depending on the season.

** 4 shifts per day

*** By the employees of the Haskovo Historical Museum



ANNEX-1

Modifications requested by the Bulgarian side to be incorporated in the Basic Design Study Report.

1. The management and maintenance of the Museum center of the Project will be budgeted by the Ministry of Culture.
2. The signer of the Bulgarian side for the agreement of consulting services, the construction and supply equipment contract will be the Ministry of Culture.
3. The Ministry of Culture will apply the construction permission to Haskovo municipality.
4. The obligations of recipient country are showed on the table 4-6 of the ATTACHMENT.
5. The Ministry of Culture shall guarantee the assignment of staff members to the Museum center. The number of staff members is showed on the table 4-8 of the ATTACHMENT.
6. The exhibition of the small-scale tomb chamber is excluded form the Project.



Major Undertaking to be taken by Each Government

No.	Items	To be covered by Grant Aid	To be covered by Recipient Side
1	To secure land		•
2	To clear, level and reclaim the site when needed		•
3	To construct gates and fences in and around the site		•
4	To construct the parking lot	(•)	(•)
5	To construct roads		
	1) Within the site	(•)	(•)
	2) Outside the site		•
6	To construct the buildings	•	
7	To provide facilities for the distribution of electricity, water supply, drainage and other incidental facilities		
	1) Electricity		
	a. The distributing line to the site		•
	b. The drop wiring and internal wiring within the site	•	
	c. The main circuit breaker and transformer	•	
	2) Water Supply		
	a. The city water distribution main to the site.		•
	b. The supply system within the site (receiving and elevated tanks)	•	
	3) Drainage		
	a. The city drainage main (for storm, sewer and others to the site)		(•)
	b. The drainage system (for toilet sewer, ordinary waste, storm drainage and others) within the site	•	
	4) Gas Supply		
	a. The city gas main to the site	---	---
	b. The gas supply system within the site	---	---
	5) Telephone System		
	a. The telephone trunk line to the main distribution frame/panel (MDF) of the building		•
	b. The MDF and the extension after the frame/panel	•	
	6) Furniture and Equipment		
	a. General furniture		•
	b. Project equipment	•	
8	To bear the following commissions to the Japanese bank for banking services based upon the B/A		
	1) Advising commission of A/P		•
	2) Payment commission		•
9	To ensure unloading and customs clearance at port of disembarkation in recipient country		
	1) Marine (Air) transportation of the products from Japan to the recipient	•	
	2) Tax exemption and custom clearance of the products at the port of disembarkation		•
	3) Internal transportation from the port of disembarkation to the project site	•	
10	To accord Japanese nationals whose services may be required in connection with the supply of the products and the services under the verified contract, such facilities as may be necessary for their entry into the recipient country and stay therein for the performance of their work.		•
11	To exempt Japanese nationals from customs duties, internal taxes and other fiscal levies which may be imposed in the recipient country with respect to the supply of the products and services under the verified contracts.		•
12	To maintain and use properly and effectively the facilities contracted and equipment provided under the Grant.		•
13	To bear all the expenses, other than those to be borne by the Grant, necessary for construction of the facilities as well as for the transportation and installation of the equipment.		•

ANNEX 3

Re. p. 17 of the table with the duties and engagements

The construction of the five observation cameras of the mound and the original tumulus will be implemented by a specialized firm and will be financed and entrusted by the Ministry of Culture

Places of construction are located as follows:

1. On a pole in front of the mound – within the two provisional protective coverings/ or the entrance of the future permanent protective construction over the dromos.
2. On the internal side of the eastern wall of the large provisional protective covering/ or on the future permanent protective construction over the entrance of the dromos.
3. On a stand in the middle of the dromos within the second half of the dromos and the entrance of the first camera.
4. On a stand in the first camera – within the entrance of the round camera and the paintings over it.
5. On the floor in the center of the round camera – with maximum scope vertically over the whole interior.

The positions of cameras 1 and 2 are not to be changed. Two types of constructions are appointed depending on the terms of the final protection system implementation. That is not tied with the stages of the museum building construction



5. Other Relevant Data

5-1 Social Condition related to the Project

(1) Number of tourists and tourism revenue

In 2004, approximately 4.63 million tourists visited Bulgaria from abroad. The number of tourists has been increasing with the growth of 14% from 2003 to 2004.

Number of tourists to Bulgaria

	2000	2001	2002	2003	2004
Number of Tourists to Bulgaria	2,785,079	3,185,684	3,433,276	4,047,863	4,629,854
Growth (since a year before)		14.38%	7.77%	17.90%	14.38%
For Tourism and Recreation	2,354,052	2,755,717	2,992,590	3,531,567	4,010,326
Growth (since a year before)		17.06%	8.60%	18.01%	13.56%
Other purposes	431,027	429,967	440,686	516,296	619,528
Growth (since a year before)		-0.25%	2.49%	17.16%	19.99%

(Source: Department "National Policy of Tourism", Ministry of Culture)

The largest number of tourists going to Bulgaria is from Greece, totaling 707 thousand in 2004; 566 thousand from Germany, 259 thousand from the United Kingdom, and 233 thousand from Macedonia followed. The proportion of the number of tourists to Bulgaria from EU countries has shown a sharp increase; from 10.8% in 1996 to 48.1% in 2004.

According to Bulgarian Association of Travel Agents, tourists from Japan totaled 95 thousand (as of November 2005), and the increase was 13%.

Number of Tourists from Each Country

		EU Total	Greek	Germany	UK	Macedonia	Russia
1996	Number of Tourists	235,848	44,625	104,000	32,044	-	-
	Ratio	10.8%	2.0%	4.7%	1.5%	-	-
2004	Number of Tourists	1,930,429	707,453	565,337	259,092	223,031	120,523
	Ratio	48.1%	17.6%	14.1%	6.5%	5.6%	3.0%

(Source: Department "National Policy of Tourism", Ministry of Culture)

Also according to Bulgarian Association of Travel Agents, 75% of the tourism revenue depends on stays and recreation at the coast of the Black Sea; 18% of it is from cultural and historical tourism. The tourism revenue itself increased 20% from 2003 to 2004.

Change of the tourism revenue (foreign tourists)

Year	1998	1999	2000	2001	2002	2003	2004
Revenue (million Euro)	868.7	881.0	1,168.4	1,084.0	1,203.1	1,460.0	1,746.3
Yearly Growth (%)		1.4%	32.6%	-7.2%	11.0%	21.4%	19.6%

(Source: Department "Prognoses and Analyses in Tourism" Ministry of Culture)

Note: the amount of the revenue does not include transportation expenses.

(2) Tourist industry by region

The number of tourists to Sofia, the capital, is approximately 580 thousand (250 thousand from Bulgaria and 330 thousand from abroad). The further the distance of the place from the capital, the smaller the number of tourists; Plovdiv has approximately 170 thousand visitors (100 thousand domestic and 70 thousand from abroad), Kazanlak has 25 thousand (18 thousand and 7 thousand), and Haskovo has 10 thousand (8 thousand and 2 thousand).

Number of Tourist and Revenue from Tourism by municipalities

Name of Cities	Number of Tourists			Revenue from Stays		Tourism Revenue
	Bulgarians	Foreigners	Total	Foreigners	Total	
Sofia	255,321	326,720	582,041	61,185,661	75,516,967	78,615,049
Plovdiv	102,227	75,214	177,441	6,040,074	10,887,805	11,381,541
Kazanlak	18,379	7,159	25,538	301,177	839,806	939,945
Haskovo	8,448	1,894	10,342	171,080	526,263	527,460

(Source: Department "National Policy of Tourism", Ministry of Culture)

The tourist industry in Bulgaria has not recognized the tourism resources in Haskovo County, and as a result the region is off the tourist route. However, Haskovo Municipality has been actively promoting its tourism resources, based on the fact that the number of tourists to Bulgaria has been increasing.

(3) Visitors to museums

There were 27 museums in Sofia as of 2002. The total number of visitors is approximately 820 thousand, averaging 31 thousand visitors per year. There are 14 museums in Plovdiv, averaging 12 thousand visitors per year. Kazanlak has the tomb of Seuthus III, which is open to the public and it attracted approximately 25 thousand visitors between October 2004 and October 2005. Most of the visitors come in the summer.

On the other hand, though Haskovo has 6 museums, the number of visitors between 1999 and 2002 decreased from 40 thousand to 24 thousand. The average number of visitors in 2004 was 4 thousand. In 2004, 5.5 thousand people visited the Haskovo Historical Museum. The number of visitors to this museum has been the same for these five years.

Number of Visitors to Museums

	1999			2002		
	No of Museums	No of Visitors	Average No of Visitors per museum	No of Museums	No of Visitors	Average No of Visitors per museum
Sofia City	30	1,921,351	64,045	27	825,000	30,556
Plovdiv County	14	2,013,380	143,813	14	168,000	12,000
Starazagora County (including Kazanlak)	14	282,160	20,154	14	243,000	17,357
Haskovo Country	6	40,099	6,683	6	24,000	4,000

(Source : National Statistics Institute)

(4) The use of cultural and historical resource from the educational point of view

According to the educational system of Bulgaria, the elementary level is the 1st to 4th year, the secondary is the 5th to 8th, and the senior is the 9th to 12th, and most of the schools consist of those three levels. In Haskovo Municipality, there are 36 elementary schools, 23 high schools, 7 professional technical schools and 2 colleges.

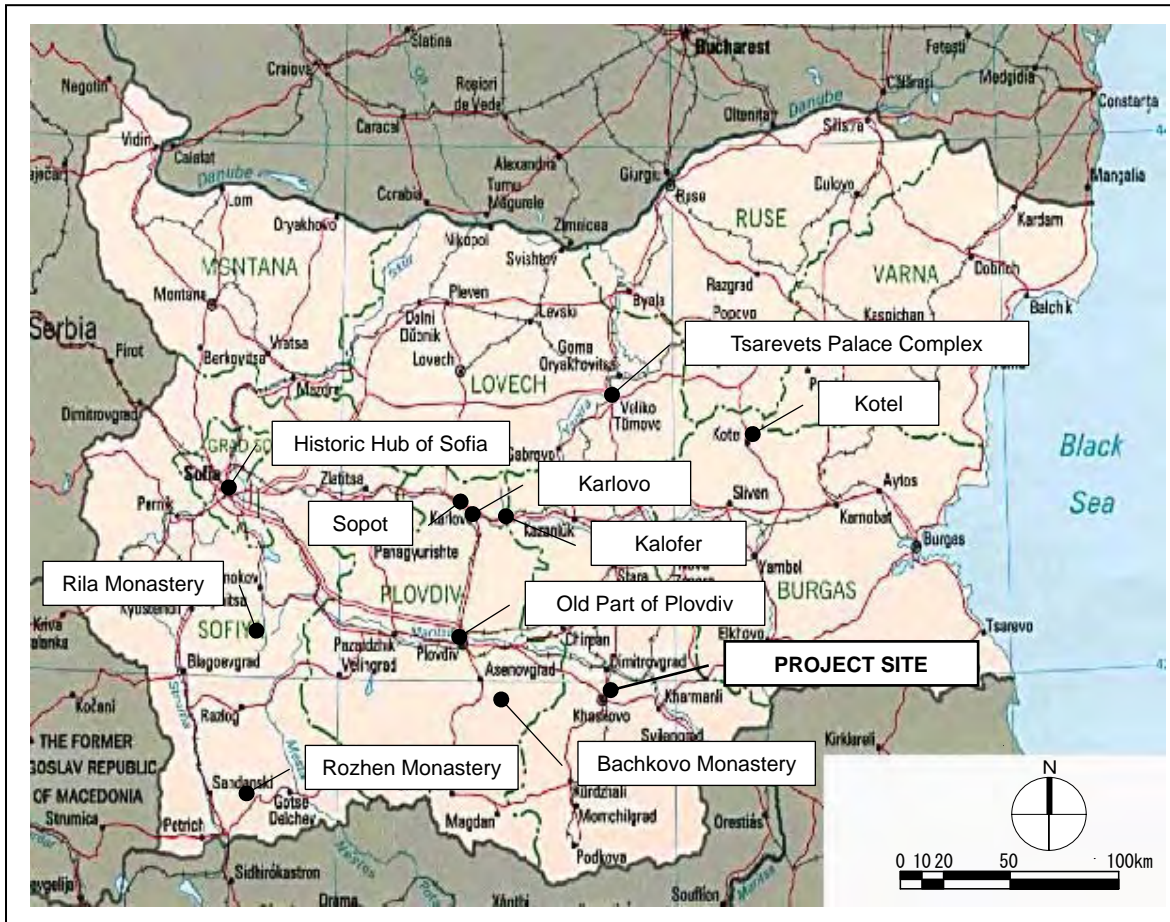
The subject of “Humans and Society” includes history and the hours used for this subject are as follows; 31 hours for 3rd and 4th grades, 51 hours for 5th and 6th grades, 71 hours for 11th grade. The students at these grades learn history, including the topic of Thracian culture. The ratio of Thracian culture accounting in the textbook of “Human and Society” is about 10%.

In the history curriculum, it is mandatory for the students to visit museums. Except for the 8th grade, most of the schools have school trips to cultural and historical sites. The students visit those sites usually by bus and the number can be from several 10 to 50.

According to the Ministry of Education, the popular sites of the school trips are monasteries, such as the Rila Monastery, the Bachkovo Monastery and the Rozhen Monastery, historical places, such as the Cultural and Historic Site in the Old Part of Plovdiv, Historic Hub of Sofia and Tsarevets Palace Complex in Veliko Tarnovo, and museums of Bulgaria’s reconstruction period in Karlovo, Kalofer, Sopot and Kotel.

The historical education in college depends on each college and faculty. The archaeological department of Sofia University implements 20-day field studies for each 1st to 3rd year student. In the field study, the students excavate and investigate excavations related to prehistory days, Thracian days, and the medieval days. The sites of the field studies are not determined by the student but the colleges. Apart from the field study, the curriculum of the college includes visits and studies at museums in and around Sofia, the Archaeological Institute with museum as the Bulgarian Academy of Science, and the National Museum of History.

The Haskovo Historical Museum opens seminars by the museum guides and history experts in a seminar room whose capacity is 100 people. Depending on the contents of the seminar, colleges and research institutions support the study. It also holds a two-hour seminar regarding archaeology every Friday and the total of 52 people (students and others those who are interested in archaeology) have attended.



Popular Sites of the School Trips in the History Curriculum

(5) The status of Thracian culture in Bulgaria

According to questionnaire results, although about 50% of people know the characteristics of Thracian culture and the Alexandrovo tomb, only 23% know the period of it. This number is not so appreciable despite the fact that the Thracian culture is included in the subject of history as well as other educational curricula such as literature.

Recognition of Thracian Culture (mark all that apply)

	Period	Excavated Site	Characteristic	Museum	Alexandrovo Tomb
Male	22.1%	52.2%	47.8%	36.3%	47.8%
Female	24.1%	56.7%	49.2%	46.0%	44.4%
Total	23.3%	55.0%	48.7%	42.3%	45.7%

(Source: the questionnaires for Bulgarians during the Basic Study of the Project)

(6) The expected role of the Project facility

According to questionnaire results, not only the people in Bulgaria but also the tourists from abroad to Bulgaria have a high interest in visiting the project site. As Thracian culture gained prosperity in the current land of Bulgaria as well as its neighboring counties, it is foreseen to

have tourists from these neighboring countries. The contents of the facility are highly expected with the exhibitions of relics, the tomb, and seminars.

Interest in the Museum Center and its Expected Contents

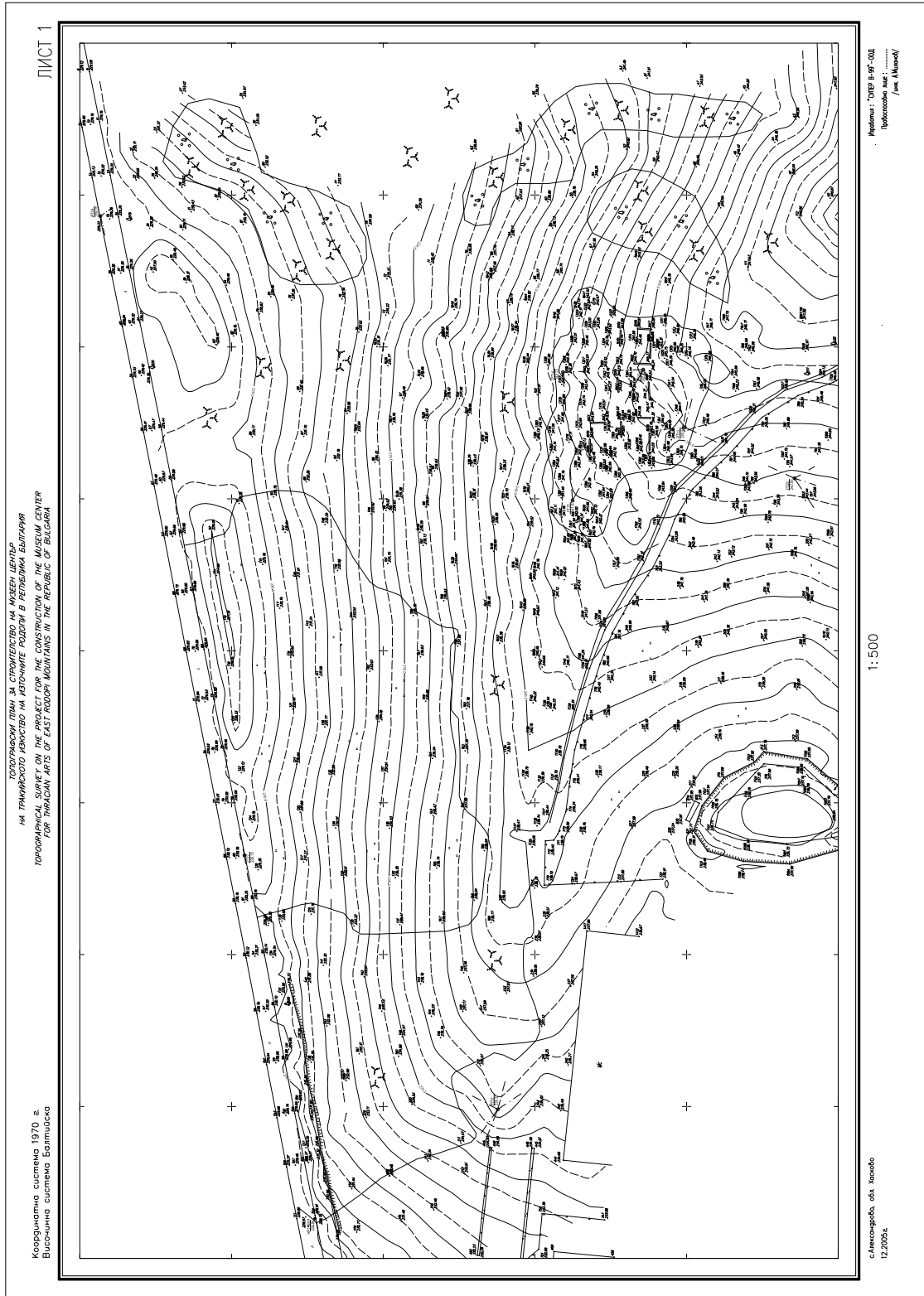
		Interest in the visit to the museum center	Expectations for the Museum Center			Expectations for the promotion of the tourist industry
			Exhibition of the tomb	Exhibition of the relics	Seminars	
Bulgarian	Male	81.4%	70.8%	70.8%	48.7%	93.8%
	Female	88.2%	68.4%	85.0%	64.2%	88.2%
	Total	85.7%	69.3%	79.7%	58.3%	90.3%
Foreigner	Male	82.1%	42.9%	51.8%	33.9%	–
	Female	62.5%	45.8%	58.3%	29.2%	–
	Total	76.3%	43.8%	53.8%	32.5%	–

(Source: the questionnaires for Bulgarians during the Basic Study of the project)

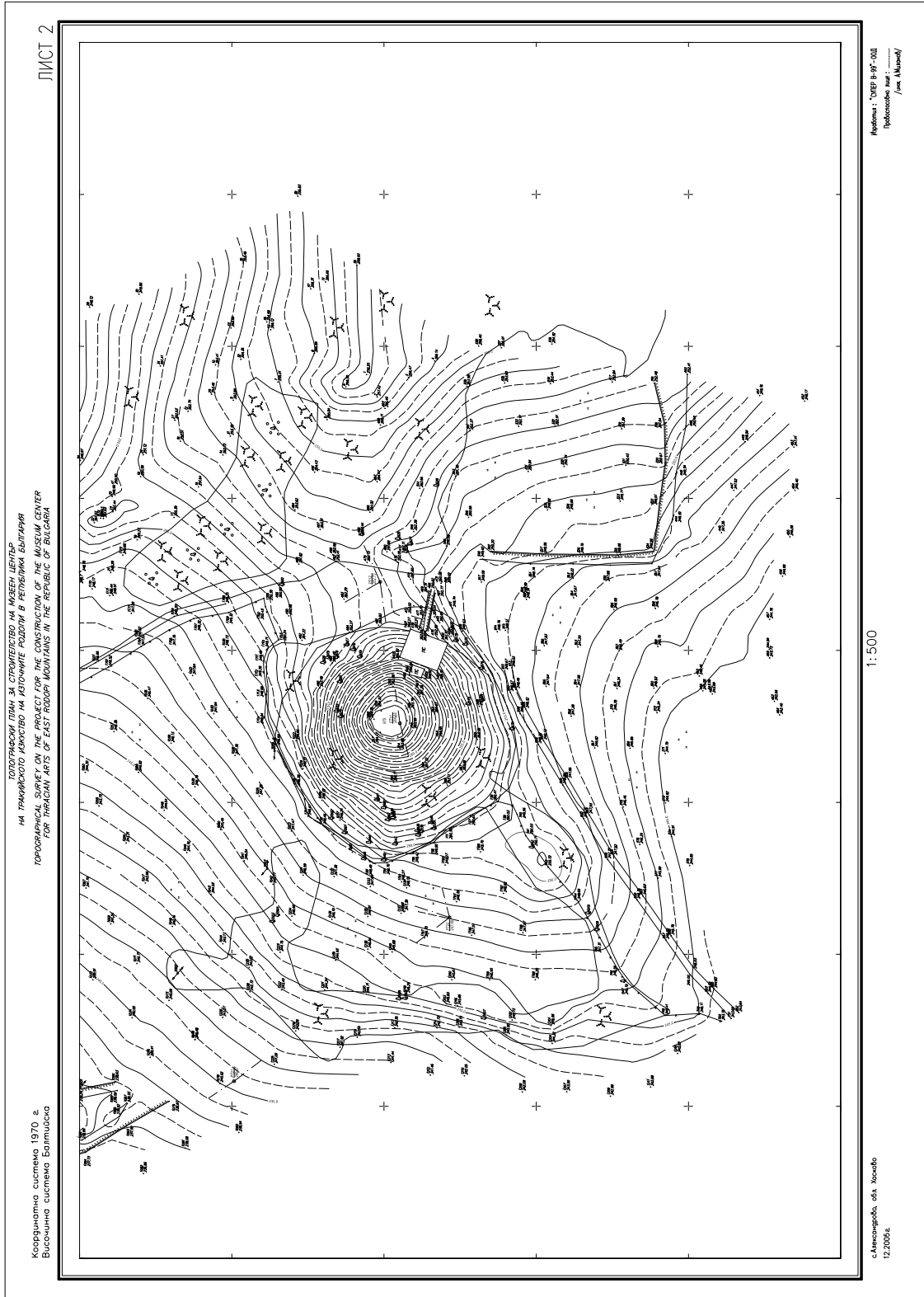
(7) Recommendations

In light of the tourist industry in Haskovo and the tendency of the visitors to museums, the active participation of the Bulgarian side will be necessary for securing visitors and contribution to the local economy. Haskovo County, especially Alexandrovo village is interested in the tourist industry and the number of tourists and the revenue from it in Bulgaria has been increasing. The potential to increase those numbers are still high. The following items can be implemented for this purpose.

- A tour basing Plovdiv, which visits Cultural and Historic Site in the Old Part of Plovdiv, Perperek site, Bachkovo Monastery, or a tour include visits to Kazanlak and Sveshtary will be produced (it could be named “Thracian road”). Perperek site is 25km away from Haskovo found in Kardzali, Rodopi Mountain.
- The Sveshtary site has been promoting itself in the exhibition targeting tourists twice a year. As the Alexandrovo tomb is not well known, an effective promotion is necessary. It is important for not only Haskovo Municipality but also the Ministry of Culture and NIMC to implement an active promotion in order to increase the visitors to the Alexandrovo tomb.



Topographic Survey Report of the Project Site (1/2)



Topographic Survey Report of the Project Site (2/2)

5-3 Geological Survey Report

LOCATION: MUSEUM CENTRE FOR THRACIAN ART OF EAST RODOPI MOUNTAINS IN BULGARIA										BOREHOLE No.: BH-1									
EQUIPMENT: ROTARY DRILL RIG										GROUND LEVEL:									
BORING METHOD: Rotary on dry										COORDS.: N: - E: -									
BOREHOLE DIAMETER: 127 mm										STARTED ON: 07.12.2005 FINISHED ON: 07.12.2005									
SAMPLES AND IN-SITU TESTS		SPT blows in cm			N ₃₀ values with depth								Casing Depth (m)	Water Depth (m)	Depth (m)	Description of strata	M.S.L. (m)	Legend	
DEPTH (m)	TYPE	15	15	15	5	10	15	20	25	30	35	40	45	50					
0.20																	Top soil – sandy to slightly silty		
0.50																	Highly weathered granite, easily crumbled with fingers to coarse sand with some fine gravels		
1.00	SPT1	30	54														Weathered granite, stronger to crumbling		
1.10																	Fractured granite with carbonate filling in the fractures, strong		
2.00																	END OF BOREHOLE		
REMARKS:																			
OPERATOR: Tzardakliev						LOGGED BY: Zahariev						REVIEWED BY: Lakov							

LOCATION: MUSEUM CENTRE FOR THRACIAN ART OF EAST RODOPI MOUNTAINS IN BULGARIA						BOREHOLE No.: BH-2										
EQUIPMENT: ROTARY DRILL RIG						GROUND LEVEL:										
BORING METHOD: Rotary on dry						COORDS.: N: - E: -										
BOREHOLE DIAMETER: 127 mm						STARTED ON: 08.12.2005 FINISHED ON: 08.12.2005										
SAMPLES AND IN-SITU TESTS		SPT blows in cm			N ₃₀ values with depth					Casing Depth (m)	Water Depth (m)	Depth (m)	Description of strata	M.S.L. (m)	Legend	
DEPTH (m)	TYPE	15	15	15	5	10	15	20	25	30	35	40	45	50		
0.0																
0.20																Top soil – sandy to slightly silty
0.30																Highly weathered granite, easily crumbled with fingers to coarse sand with some fine gravels
0.60																Weathered granite, stronger to crumbling
0.6-1.05	SPT2	15	20	26	N ₃₀ =46											
1.2-1.6 (stopped)	SPT3	20	27	30	N ₃₀ =57											
1.20																Weathered granite with carbonate filling in the fractures
1.50																Fractured granite to fragments of 3-4 cm with carbonate filling in the fractures
2.00																END OF BOREHOLE
REMARKS:																
OPERATOR: Tzardakiev						LOGGED BY: Zahariev						REVIEWED BY: Lakov				

LOCATION: MUSEUM CENTRE FOR THRACIAN ART OF EAST RODOPI MOUNTAINS IN BULGARIA										BOREHOLE No.: BH-4									
EQUIPMENT: ROTARY DRILL RIG										GROUND LEVEL:									
BORING METHOD: Rotary on dry										COORDS.: N: - E: -									
BOREHOLE DIAMETER: 127 mm										STARTED ON: 10.12.2005 FINISHED ON: 10.12.2005									
SAMPLES AND IN-SITU TESTS		SPT blows in cm			N ₃₀ values with depth							Casing Depth (m)	Water Depth (m)	Depth (m)	Description of strata	M.S.L. (m)	Legend		
DEPTH (m)	TYPE	15	15	15	5	10	15	20	25	30	35	40	45	50					
0.20																	Top soil – sandy to slightly silty		
0.50																	Highly weathered granite, easily crumbled with fingers to coarse sand with some fine gravels		
0.80																	Weathered granite, easily crumbled with fingers for silty coarse sand with fine gravels		
1.20																	Weathered granite with carbonate filling in the fractures, crumbled with fingers with some effort to silty coarse sand with fine gravels		
1.50																	Strong granite		
2.00																	END OF BOREHOLE		
REMARKS:																			
OPERATOR: Tzardakiev						LOGGED BY: Zahariev						REVIEWED BY: Lakov							

6. Reference

No.	Title	Media	Original /Copy	Organization	Year
1	Legislation and Institutions (Ministry of Culture)	Document	Copy		
2	Organization Chart of the Ministry of Culture	Document	Copy		2005
3	Regulation No. 5/14 May 1998 on the Designation of Immovable cultural Monuments	Document	Copy	Ministry of Culture	2001
4	List of the Exhibits- Haskovo Historical Museum	Document	Copy		
5	Alexandrovo Tomb - Section	Document	Copy		
6	Alexandrovo Tomb - Plan	Document	Copy		
7	Bulgarian Goblin	Book	Original		
8	Bulgarian Diplomatic Review	Book	Original		2005
9	Tour BG	Book	Original		2005
10	Haskovo (Guide)	Book	Original		
11	Haskovo (Guide)	Book	Original		
12	Travel leaflet	Book	Original	DM Travel Ltd.	
13	Summary of JICA Bulgaria Office	Document	Copy	JICA	2005
14	Latest information of Bulgaria for Short term Visitors	Document	Copy	JICA	2005