

**Minutes of Discussions
on the Basic Design Study
on the Project for the Construction
of the Museum Center for Thracian Arts
of East Rodopi Mountains
in the Republic of Bulgaria
Explanation of Draft Report**

In November 2005, the Japan International Cooperation Agency (hereinafter referred to as "JICA") dispatched the Basic Design Study team on The Project for the Construction of the Museum Center for Thracian Arts of East Rodopi Mountains (hereinafter referred to as "the Project") to the Republic of Bulgaria (hereinafter referred to as "Bulgaria"), and through discussions, field survey, and technical examination of the results in Japan, JICA prepared a draft report of the study.

In order to explain and to consult with concerned officials of Bulgaria on the components of the draft report, JICA sent to Bulgaria the Draft Report Explanation Team (hereinafter referred to as "the Team"), which is headed by Mr. Keizo KAGAWA, the Resident Representative of the JICA Bulgaria Office, from February 19th to 26th, 2006.

As a result of discussions, both sides confirmed the main items described on the attached sheet.

Sofia, 24 February, 2006



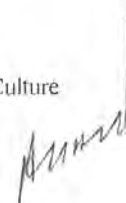
Keizo KAGAWA
Leader
Basic Design Study Team
Japan International Cooperation Agency



Ivan Danev TOKADJIEV
Deputy Minister
Ministry of Culture
The Republic of Bulgaria



Georgi Dimitrov UGRINOV
Director
National Institute for Monuments of Culture
The Republic of Bulgaria



ATTACHMENT

1. Components of the Draft Report

The Bulgarian side has agreed and accepted in principle the components of the draft report explained by the Team.

Modifications described in Annex – 1 were requested by Bulgarian side, and will be reflected in the Basic Design Study Report.

The final decision will be made by the Government of Japan based on the examination of the result of the Basic Design Study.

2. Japan's Grant Aid Scheme

The Bulgarian side has understood the Japan's Grant Aid Scheme and the necessary undertakings to be taken by the Government of Bulgaria as explained by the Team and described in Annex – 4 and Annex – 5 of the Minutes of Discussions signed by both sides on 21 November 2005. It is reconfirmed as described in Annex – 2.

3. Schedule of the Study

JICA will complete the final report in accordance with the confirmed items and send it to the Government of Bulgaria by the end of April, 2006.

4. Other Relevant Issues

4-1 Both sides have agreed that the components of Japan's grant aid for the Project are as follows:

- construction of the museum center for exhibition, lecturing and conservation/research.
- making the replica of Alexandrovo Tomb and procurement of the equipment for exhibition,
- procurement of the equipment for lecturing and research.

4-2 Right after the cabinet of Japan decides the implementation of the Project, the Ministry of Culture takes the responsibility to offer to the Council of Ministers of Bulgaria a draft resolution for the implementation of the project and for the exemption from VAT and other taxes of the Project, according to the Bulgarian legislation. The Ministry of Culture makes best efforts to finish the procedure of tax exemption within two and a half months.

4-3 The Ministry of Culture shall provide all necessary data for making the replica of Alexandrovo Tomb until the Exchange of Notes, and after the signing of agreement for the consulting services the Ministry of Culture presents that data to the Consultant.



4-4 Regarding the artifacts and archeological remains in the Project site. Japanese side received the outline survey report on it and both sides have agreed that there are no artifacts and archeological remains affecting the implementation of the Project.

4-5 The monitor cameras for the tomb should be set up by the Ministry of Culture until the opening of the Museum Center at the location indicated in the Annex - 3.

4-6 Both sides have agreed the obligations of recipient country on the following table.

Item	Estimation (BGN)	Organization	Schedule (Deadline)
Ground leveling of the construction site,	51,000 BGN	Haskovo Municipality	Before the commencement of the construction work
Cleaving the access road		Haskovo Municipality	Before the commencement of the construction work
Construction and paving of the walkway from the Museum center to the tomb		Haskovo Municipality	Before the opening of the Museum center
Electricity	152,000 BGN	Haskovo Municipality	Two mouths before the completion of the construction work
Telephone line			
Water supply			
Fixtures, office furniture and equipment including a rolling tower or a lifter	13,000 BGN	Haskovo Municipality	Before the opening of the Museum center
Attendance to the excavation work for the construction	----	Ministry of Culture	During the excavation work of the construction work
Assignment of the counterpart	-----	Ministry of Culture	Before the signing of the agreement for consulting services
Construction permission	-----	(Applicant:) Ministry of Culture	Before the commencement of the construction work

4-7 The Ministry of Culture shall guarantee the budget for working and maintenance of the Museum center

Estimated Maintenance Expense

Item	(BGN/ Year)	Computation Condition*
Cleaning Fee	7,300	
Electricity Charge	22,800	Lighting, air conditioning, etc.
Water Charge	640	For staff and visitor
Septic Tank Maintenance Fee	1,400	
Total	32,140	

*Estimated the number of visitor to be 10 thousand a year.

(7/3)

Amor

Bl

4-8 The Ministry of Culture shall guarantee the assignment of staff members to the Museum center.

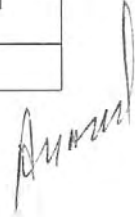
The following number of staff members will be necessary.

Position	Director	Curator	Restorer	Guide	Account-ant	Security Guard	Cleaner	Mainte-nance	Total
No.	1	1	1	*2	1	**4/4	1	***	

* The number will vary depending on the season.

** 4 shifts per day

*** By the employees of the Haskovo Historical Museum



ANNEX-1

Modifications requested by the Bulgarian side to be incorporated in the Basic Design Study Report.

1. The management and maintenance of the Museum center of the Project will be budgeted by the Ministry of Culture.
2. The signer of the Bulgarian side for the agreement of consulting services, the construction and supply equipment contract will be the Ministry of Culture.
3. The Ministry of Culture will apply the construction permission to Haskovo municipality.
4. The obligations of recipient country are showed on the table 4-6 of the ATTACHMENT.
5. The Ministry of Culture shall guarantee the assignment of staff members to the Museum center.
The number of staff members is showed on the table 4-8 of the ATTACHMENT.
6. The exhibition of the small-scale tomb chamber is excluded form the Project.



Major Undertaking to be taken by Each Government

No.	Items	To be covered by Grant Aid	To be covered by Recipient Side
1	To secure land		•
2	To clear, level and reclaim the site when needed		•
3	To construct gates and fences in and around the site		•
4	To construct the parking lot	(•)	(•)
5	To construct roads		
	1) Within the site	(•)	(•)
	2) Outside the site		•
6	To construct the buildings	•	
7	To provide facilities for the distribution of electricity, water supply, drainage and other incidental facilities		
	1) Electricity		
	a. The distributing line to the site		•
	b. The drop wiring and internal wiring within the site	•	
	c. The main circuit breaker and transformer	•	
	2) Water Supply		
	a. The city water distribution main to the site.		•
	b. The supply system within the site (receiving and elevated tanks)	•	
	3) Drainage		
	a. The city drainage main (for storm, sewer and others to the site)		(•)
	b. The drainage system (for toilet sewer, ordinary waste, storm drainage and others) within the site	•	
	4) Gas Supply		
	a. The city gas main to the site	---	---
	b. The gas supply system within the site	---	---
	5) Telephone System		
	a. The telephone trunk line to the main distribution frame/panel (MDF) of the building		•
	b. The MDF and the extension after the frame/panel	•	
	6) Furniture and Equipment		
	a. General furniture		•
	b. Project equipment	•	
8	To bear the following commissions to the Japanese bank for banking services based upon the B/A		
	1) Advising commission of A/P		•
	2) Payment commission		•
9	To ensure unloading and customs clearance at port of disembarkation in recipient country		
	1) Marine (Air) transportation of the products from Japan to the recipient	•	
	2) Tax exemption and custom clearance of the products at the port of disembarkation		•
	3) Internal transportation from the port of disembarkation to the project site	•	
10	To accord Japanese nationals whose services may be required in connection with the supply of the products and the services under the verified contract, such facilities as may be necessary for their entry into the recipient country and stay therein for the performance of their work.		•
11	To exempt Japanese nationals from customs duties, internal taxes and other fiscal levies which may be imposed in the recipient country with respect to the supply of the products and services under the verified contracts.		•
12	To maintain and use properly and effectively the facilities contracted and equipment provided under the Grant.		•
13	To bear all the expenses, other than those to be borne by the Grant, necessary for construction of the facilities as well as for the transportation and installation of the equipment.		•

ANNEX 3

Re. p. 17 of the table with the duties and engagements

The construction of the five observation cameras of the mound and the original tumulus will be implemented by a specialized firm and will be financed and entrusted by the Ministry of Culture

Places of construction are located as follows:

1. On a pole in front of the mound – within the two provisional protective coverings/ or the entrance of the future permanent protective construction over the dromos.
2. On the internal side of the eastern wall of the large provisional protective covering/ or on the future permanent protective construction over the entrance of the dromos.
3. On a stand in the middle of the dromos within the second half of the dromos and the entrance of the first camera.
4. On a stand in the first camera – within the entrance of the round camera and the paintings over it.
5. On the floor in the center of the round camera – with maximum scope vertically over the whole interior.

The positions of cameras 1 and 2 are not to be changed. Two types of constructions are appointed depending on the terms of the final protection system implementation. That is not tied with the stages of the museum building construction

(73)

[Handwritten signatures]

5. 事前評価表

事業事前評価表（基本設計時）

1. 案件名
ブルガリア共和国 東ロドピ山トラキア美術博物館センター建設計画
2. 要請の背景（協力の必要性・位置付け）
<p>2000年に発掘されたアレクサンドロヴォ古墳は、2007年にも世界遺産に登録されると期待され、観光や研修・視察を目的とした多数の訪問客が訪れると期待されているが、古墳自体は一般公開が出来る状況になく、現地及びその周辺にもアレクサンドロヴォ古墳やトラキア文明に関する情報を提供できる適切な施設がない。また、適切な保存措置が実施されてきたとは言い難く、内部の壁画には劣化が生じている。美術的にも歴史資料としても価値が高いと考えられるため、早急な対策が必要となっている。</p> <p>ブルガリア共和国（以下、「ブ」国）の国家経済開発計画において、観光分野発展のため文化に根ざした観光も開発目標に掲げられている。また「国民はブルガリアの財産である」と題する政策綱領の中で堅実な経済発展、ビジネス環境の改善として観光開発が項目の一つに掲げられている。本プロジェクトはこれらに合致したものである。あわせて「ブ」国では、国家政策レベルでトラキア文明を含む考古学・歴史遺産の保存のための枠組みを策定しており、本プロジェクトはこの枠組みの中で計画されたプロジェクトである。これまで整備されてきた北部・中央ブルガリアと異なり、アレクサンドロヴォ古墳は南部地域でのトラキア文明を特徴づける文化財として認識されている。以上のように、本プロジェクトは国家文化財保護・観光開発政策の一環として位置づけられている。</p> <p>以上から、アレクサンドロヴォ古墳やトラキア文明に関する情報提供と修復保存の研究促進を目的とした博物館センターの施設及び機材の整備が必要となっている。</p>
3. プロジェクト全体計画概要
(1)プロジェクト全体計画の目標（裨益対象の範囲及び規模）
<p>調達された機材及び博物館センターを活用することにより、トラキア文明に関する修復保存研究が促進され、同センターにおける展示、教育及び研修を通じて「ブ」国民及び周辺国民のトラキア文明に関する関心と理解が高まる。</p> <p>裨益対象はトラキア文明の研究者、博物館センター訪問者及びブルガリア全国民（約 776 万人）である。</p>
(2)プロジェクト全体計画の成果
<p><u>トラキア文明文化財（古墳レプリカを含む）が展示される</u></p> <p><u>トラキア文明文化財の修復保存研究用機材が整備される</u></p>
(3)プロジェクト全体計画の主要活動
<p><u>アレクサンドロヴォ古墳近辺に、博物館センターが建設される</u></p> <p><u>博物館センターに、ハスコヴォ市近辺で発掘された出土品等の展示物が整備される</u></p> <p><u>博物館センターに、視聴覚研修に必要な機材が調達される</u></p> <p><u>博物館センターに、視聴覚研修に必要なソフトが整備される</u></p> <p><u>博物館センターに、修復保存研究に必要な機材が調達される</u></p>

(4)投入 (インプット)

- 1)日本側 (=本案件) : 無償資金協力 2.91 億円
- 2)相手国側 :
 - ①博物館センター職員の配置
 - ②展示品・展示案内等の展示に関するビデオ、パネル等作成
 - ③施設・機材の運営・維持管理にかかる経費 : 3.2 万ブルガリア・レバ
 - ④建設敷地の整地、アクセス道路の造成、博物館から古墳までの遊歩道工事
 - ⑤インフラ (電気・電話・水道) の延長敷設工事

(5)実施体制

主管官庁 : 文化省
実施機関 : 国立文化財研究所

4. 無償資金協力案件の内容

(1)サイト

ブルガリア国南西部 ハスコヴォ県アレクサンドロヴォ村、
アレクサンドロヴォ古墳近辺

(2)概要

アレクサンドロヴォ古墳付近へのトラキア美術博物館センターの施設
同センターで使用する展示・研修・保存修復研究用機材の整備

(3)相手国側負担事項

建設敷地の整地
アクセス道路の造成
インフラ (電気・電話・水道) の延長敷設工事

(4)概算事業費

概算事業費 3.06 億円 (無償資金協力 2.91 億円、「ブ」国側負担 0.15 億円)

(5)工期

詳細設計 (実施設計) を含め、約 15.5 か月 (予定)

(6)環境面の配慮

「ブ」国が実施した埋蔵文化財調査によれば、プロジェクト・サイトには実施に影響する文化財等は存在しない。万が一工事中に文化財等が発見された場合は関係各機関に報告のうえ、適切な方策を講じる。また、工事中に文化省職員を立ち合わせる。

5. 外部要因リスク

建設工事中に、プロジェクト・サイトで埋蔵文化財等が発見される

6. 過去の類似案件からの教訓の活用

特になし。

7. プロジェクト全体計画の事後評価に係る提案

(1)プロジェクト全体計画の目標達成を示す成果指標

ア. 見学、研修

指標	現状	計画値(※)
博物館センターにおける 研修・教育活動の実施回数	0回	24回/年
博物館センターへの入館者数	0人	5,000人/年

※ 計画値は博物館センターでの各種活動、センターへの入館動向が安定する時点での値とし、事業実施（施設完工及び機材稼働開始後）から3年後とする。

イ. 研究、保存

アレクサンドロヴォ近辺におけるトラキア文明文化財に関する修復・保存研究が促進される

事業効果発現状況の定量的把握は困難なため、アレクサンドロヴォ古墳及び周辺における研究活動の状況から検討した。現在、同古墳の近辺には研究施設が存在していないが、本計画により同古墳近辺で修復・保存研究が可能な施設が建ち、内部壁画劣化状況等の実情に応じた適切な対策が実施できるようになる。

(2)その他の成果指標

特になし。

(3)評価のタイミング

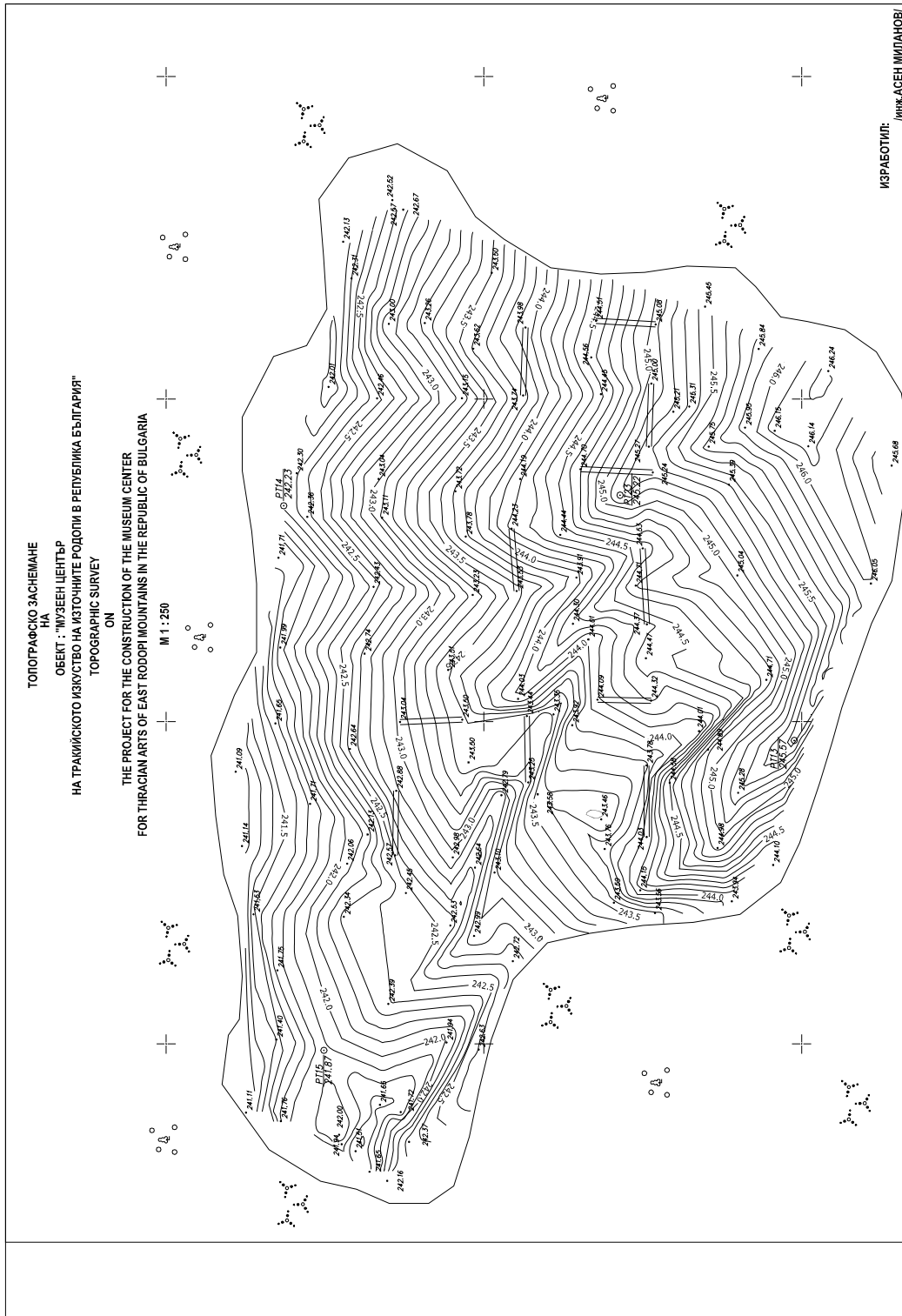
2012年以降（施設完工および機材稼働開始3年後以降）

6. 参考資料／入手資料リスト

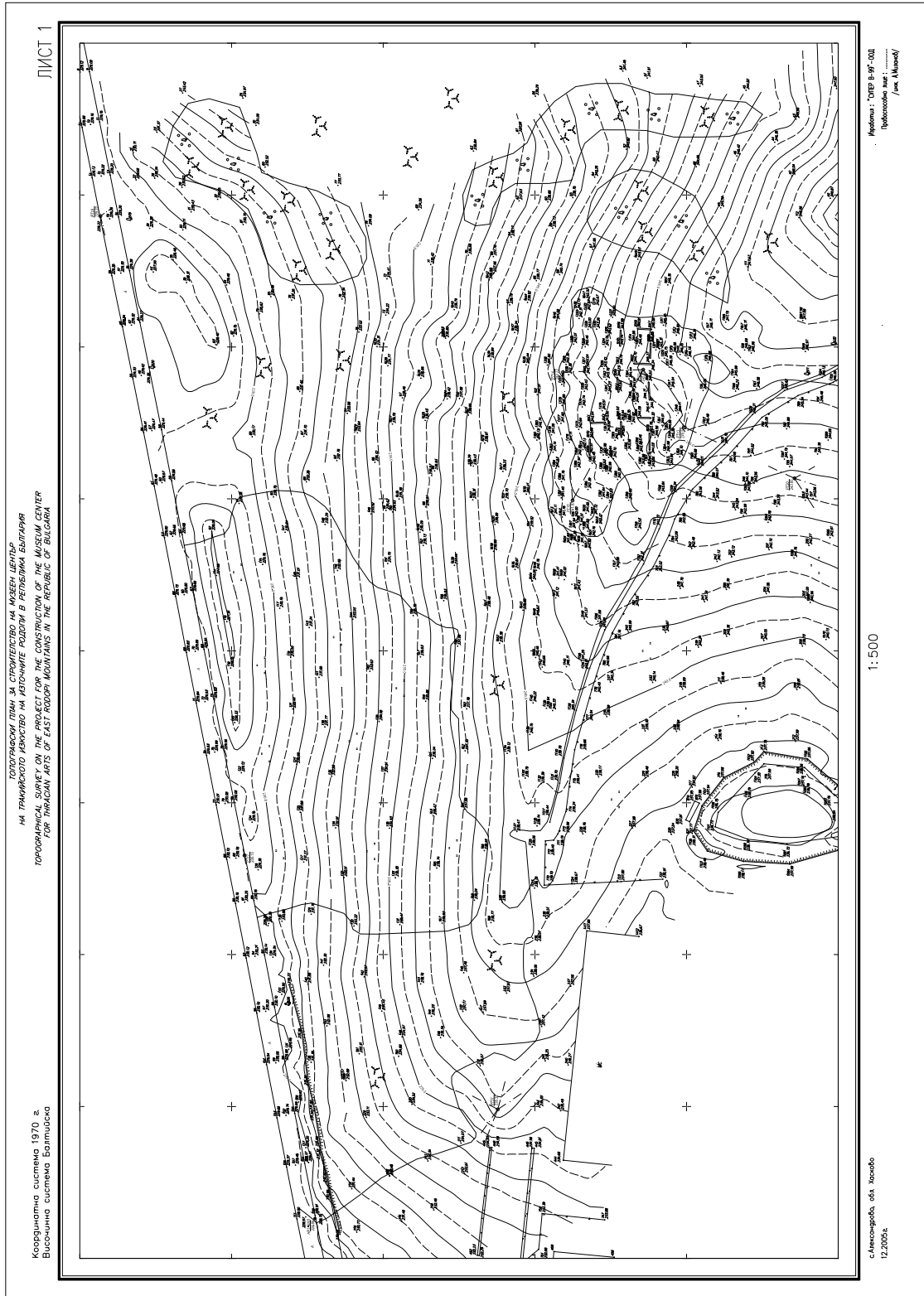
番号	名 称	形態	オリジナル ・コピー	発行機関	発行 年
1	Legislation and Institutions(Ministry of Culture)	図書	コピー		
2	Organization Chart of the Ministry of Culture	図書	コピー		2005
3	Regulation No. 5/14 May 1998 on the Disignatio of Immovable cultural Monuments	図書	コピー	Ministry of Culture	2001
4	List of the Exhibits- Haskovo Historical Museum	図書	コピー		
5	Alexandrovo Tomb - Section	図書	コピー		
6	Alexandrovo Tomb - Plan	図書	コピー		
7	Bulgarian Goblin	図書	オリジナル		
8	Bulgarian Diplomatic Review	図書	オリジナル		2005
9	Tour BG	図書	オリジナル		2005
10	Haskovo 案内	図書	オリジナル		
11	Haskovo 案内	図書	オリジナル		
12	旅行案内リーフレット	図書	オリジナル	DM Travel Ltd.	
13	ブルガリア駐在員事務所の現状	図書	コピー	香川敬三氏	2005
14	短期滞在者用国別最新情報（ブルガリア）	図書	コピー	JICAブルガリア駐在員事務所	2005

7. その他の資料・情報

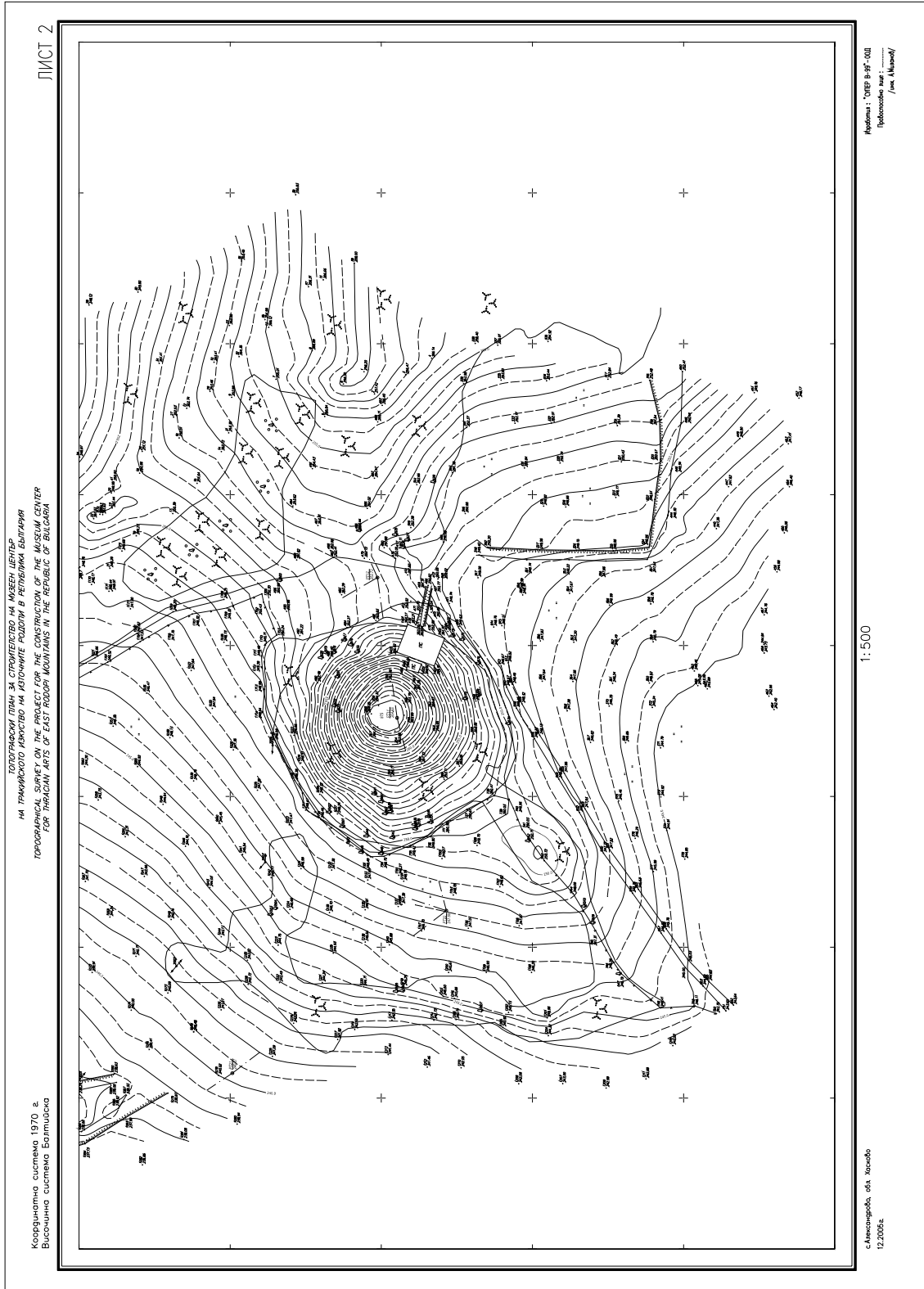
7-1 プロジェクト・サイト現況測量結果



博物館センター建設予定地測量結果



プロジェクト・サイト測量結果 (1/2)



プロジェクト・サイト測量結果 (2 / 2)

7-2 地質調查結果

LOCATION: MUSEUM CENTRE FOR THRACIAN ART OF EAST RODOPI MOUNTAINS IN BULGARIA						BOREHOLE No.: BH-1									
EQUIPMENT: ROTARY DRILL RIG						GROUND LEVEL:									
BORING METHOD: Rotary on dry						COORDS.: N: - E: -									
BOREHOLE DIAMETER: 127 mm						STARTED ON: 07.12.2005 FINISHED ON: 07.12.2005									
SAMPLES AND IN-SITU TESTS		SPT blows in cm			N ₃₀ values with depth			Casing Depth (m)	Water Depth (m)	Depth (m)	Description of strata	M.S.L. (m)	Legend		
DEPTH (m)	TYPE	15	15	15	5	10	15	20	25	30	35	40	45		
0.20													Top soil – sandy to slightly silty		
0.50													Highly weathered granite, easily crumbled with fingers to coarse sand with some fine gravels		
1.10	SPT1	30	54										Weathered granite, stronger to crumbling		
1.50													Fractured granite with carbonate filling in the fractures, strong		
2.00													END OF BOREHOLE		
REMARKS:															
OPERATOR: Tzardakliev				LOGGED BY: Zahariev				REVIEWED BY: Lakov							

LOCATION: MUSEUM CENTRE FOR THRACIAN ART OF EAST RODOPI MOUNTAINS IN BULGARIA						BOREHOLE No.: BH-2										
EQUIPMENT: ROTARY DRILL RIG						GROUND LEVEL:										
BORING METHOD: Rotary on dry						COORDS.: N: - E: -										
BOREHOLE DIAMETER: 127 mm						STARTED ON: 08.12.2005 FINISHED ON: 08.12.2005										
SAMPLES AND IN-SITU TESTS		SPT blows in cm			N ₃₀ values with depth					Casing Depth (m)	Water Depth (m)	Depth (m)	Description of strata	M.S.L. (m)	Legend	
DEPTH (m)	TYPE	15	15	15	5	10	15	20	25	30	35	40	45	50		
0.0																
0.20																Top soil – sandy to slightly silty
0.30																Highly weathered granite, easily crumbled with fingers to coarse sand with some fine gravels
0.60																Weathered granite, stronger to crumbling
0.6-1.05	SPT2	15	20	26	N ₃₀ =46											
1.20																Weathered granite with carbonate filling in the fractures
1.2-1.6 (stopped)	SPT3	20	27	30	N ₃₀ =57											
1.5																Fractured granite to fragments of 3-4 cm with carbonate filling in the fractures
2.00																END OF BOREHOLE
REMARKS:																
OPERATOR: Tzardakiev						LOGGED BY: Zahariev						REVIEWED BY: Lakov				

LOCATION: MUSEUM CENTRE FOR THRACIAN ART OF EAST RODOPI MOUNTAINS IN BULGARIA						BOREHOLE No.: BH-3												
EQUIPMENT: ROTARY DRILL RIG						GROUND LEVEL:												
BORING METHOD: Rotary on dry						COORDS.: N: - E: -												
BOREHOLE DIAMETER: 127 mm						STARTED ON: 08.12.2005 FINISHED ON: 08.12.2005												
SAMPLES AND IN-SITU TESTS		SPT blows in cm			N ₃₀ values with depth					Casing Depth (m)	Water Depth (m)	Depth (m)	Description of strata	M.S.L. (m)	Legend			
DEPTH (m)	TYPE	15	15	15	5	10	15	20	25	30	35	40	45	50				
0.7-1.15	SPT4	16	24	36	N ₃₀ =60							0.30	Top soil – sandy to slightly silty					
0.5																0.50	Highly weathered granite, easily crumbled with fingers to coarse sand with some fine gravels	
																0.80	Weathered granite, easily crumbled with fingers for silty coarse sand with fine gravels	
1.0																1.10	Weathered granite with carbonate filling in the fractures, crumbled with fingers with same effort to silty coarse sand with fine gravels	
1.5																2.00	Strong granite	
2.0																2.00	END OF BOREHOLE	
REMARKS:																		
OPERATOR: Tzardakiev						LOGGED BY: Zahariev						REVIEWED BY: Lakov						

LOCATION: MUSEUM CENTRE FOR THRACIAN ART OF EAST RODOPI MOUNTAINS IN BULGARIA										BOREHOLE No.: BH-4									
EQUIPMENT: ROTARY DRILL RIG										GROUND LEVEL:									
BORING METHOD: Rotary on dry										COORDS.: N: - E: -									
BOREHOLE DIAMETER: 127 mm										STARTED ON: 10.12.2005 FINISHED ON: 10.12.2005									
SAMPLES AND IN-SITU TESTS		SPT blows in cm			N ₃₀ values with depth							Casing Depth (m)	Water Depth (m)	Depth (m)	Description of strata	M.S.L. (m)	Legend		
DEPTH (m)	TYPE	15	15	15	5	10	15	20	25	30	35	40	45	50					
0.20																	Top soil – sandy to slightly silty		
0.50																	Highly weathered granite, easily crumbled with fingers to coarse sand with some fine gravels		
0.80																	Weathered granite, easily crumbled with fingers for silty coarse sand with fine gravels		
1.20																	Weathered granite with carbonate filling in the fractures, crumbled with fingers with some effort to silty coarse sand with fine gravels		
1.50																	Strong granite		
2.00																	END OF BOREHOLE		
REMARKS:																			
OPERATOR: Tzardakiev						LOGGED BY: Zahariev						REVIEWED BY: Lakov							