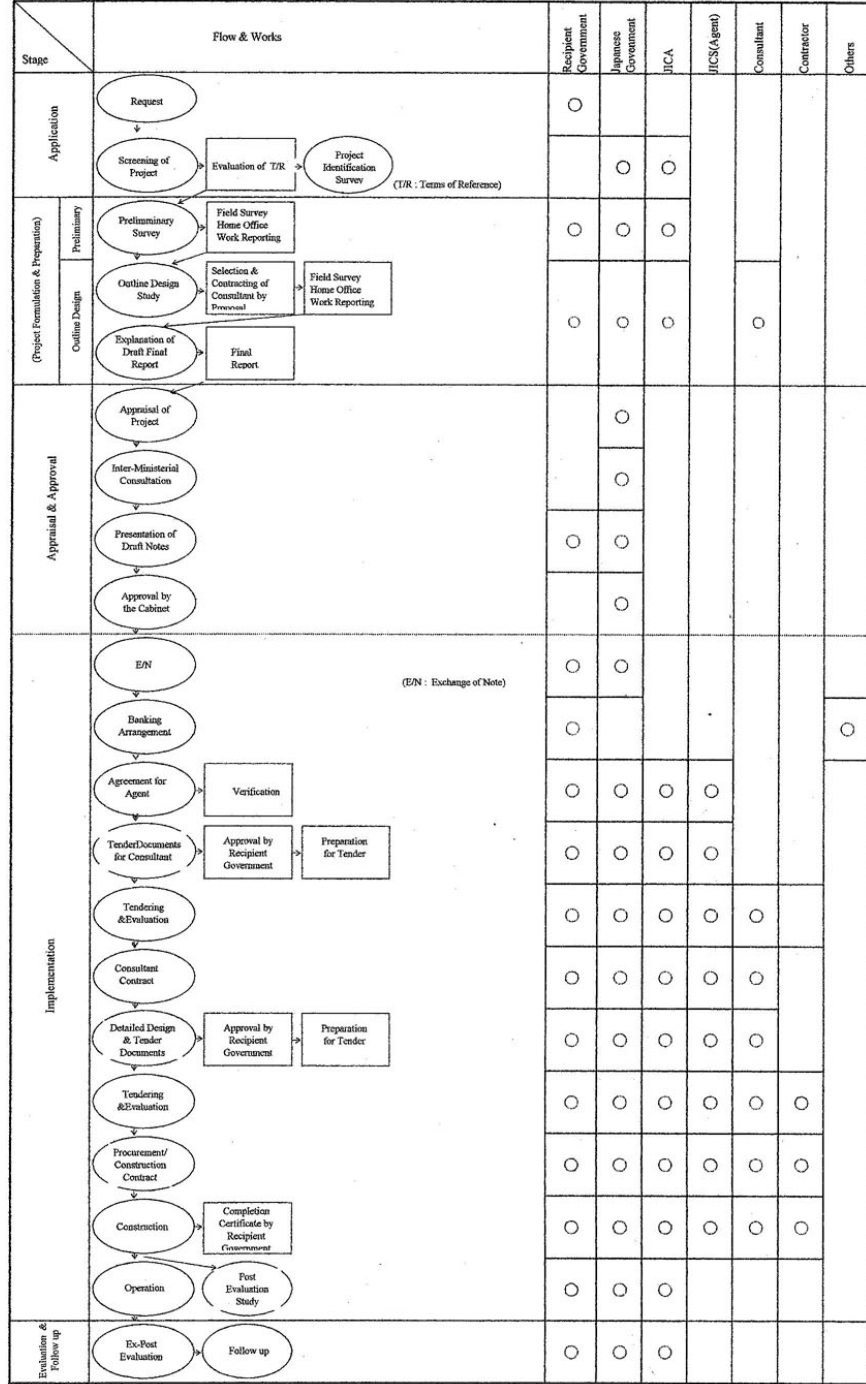


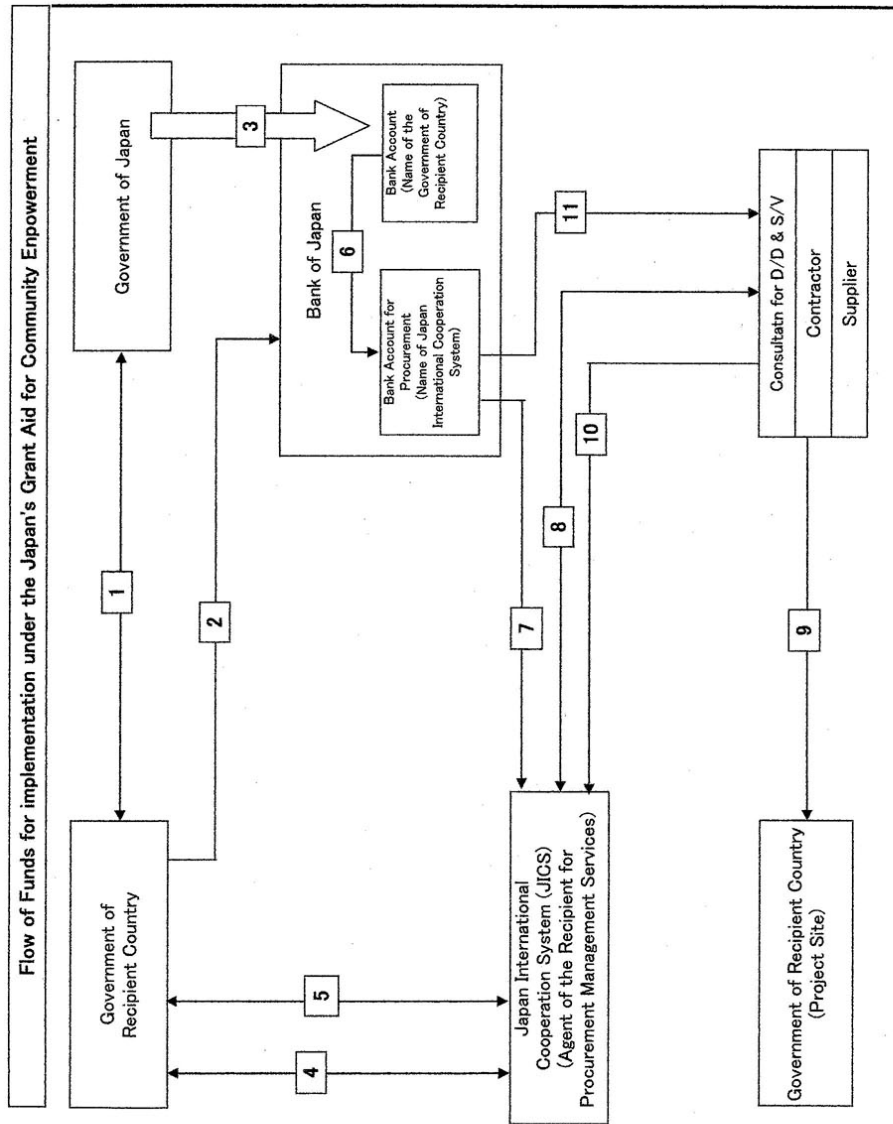
Annex 4-2: Flow Chart of Japan's Grant Aid Procedures for Community Empowerment (Tentative)

FLOW CHART OF JAPAN'S GRANT AID PROCEDURES FOR COMMUNITY EMPOWERMENT (Tentative)



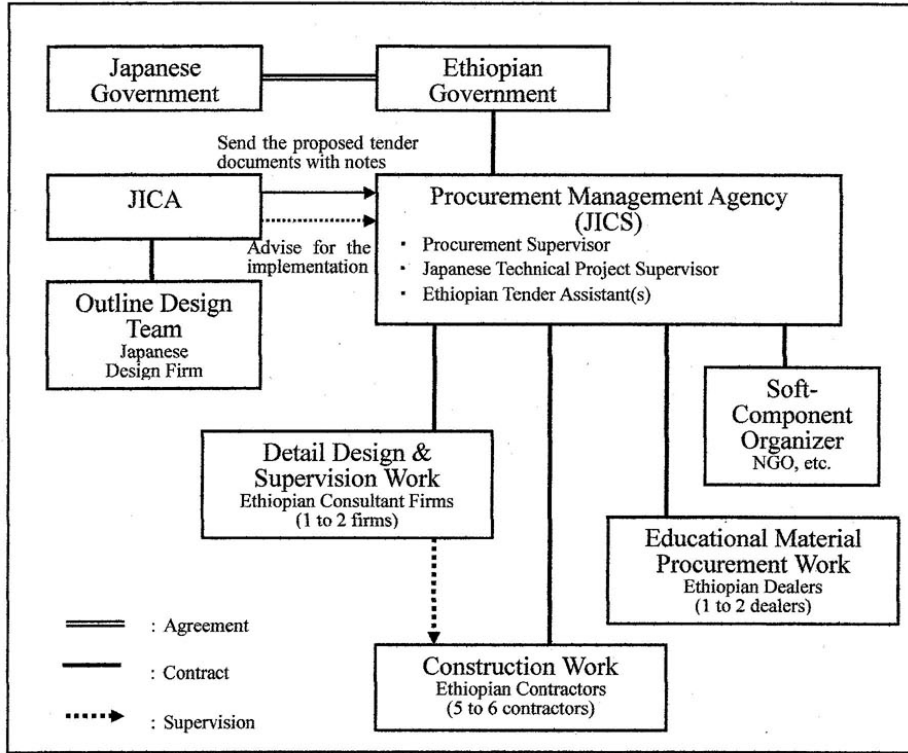
[Handwritten signatures and initials]

ANNEX 4-3: Flow of Funds for implementation under the Japan's Grant Aid for Community Empowerment



[Handwritten signatures and initials]

Chart of the Project Implementation Organization
under the Japan's Grant Aid Scheme for Community Empowerment in Ethiopia
(Tentative)



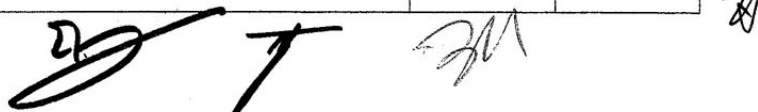
Handwritten signatures and initials, including a large signature on the left and initials 'T' and 'SM' on the right.

Handwritten mark resembling a star or asterisk.

Annex-5

Major Undertaking to be taken by Each Government

No	Items	To be covered by Grant Aid	To be covered by Recipient Side
1	To secure land		●
2	To clear, level and reclaim the site when needed		●
3	To construct gates and fences in and around the site		●
4	To construct the parking lot	●	
5	To construct roads		
	1) Within the Site	●	
	2) Outside the site		●
6	To construct the buildings	●	
7	To provide facilities for the distribution of electricity, water supply, drainage and other incidental facilities		
	1) Electricity		
	a. The distributing line to the site		●
	b. The drop wiring and internal wiring within the site	●	
	c. The main circuit breaker and transformer	●	
	2) Water Supply		
	a. The city water distribution main to the site		●
	b. The supply system within the site (receiving and elevated tanks)	●	
	3) Drainage		
	a. The city drainage main (for storm, sewer and others) to the site		●
	b. The drainage system (for toilet sewer, ordinary waste, storm drainage and others) within the site	●	
	4) Gas Supply		
	a. The city gas main to the site		●
	b. The gas supply system within the site	●	
	5) Telephone System		
	a. The telephone trunk line to the main distribution frame/panel (MDF) of the building		●
	b. The MDF and the extension after the frame/panel	●	
	6) Furniture and Equipment		
	a. General furniture	●	●
	b. Project equipment	●	
8	To bear the following commissions to the Japanese bank for the banking services based upon the B/A		
	1) Advising commission of A/P		●
	2) Payment commission		●
9	To ensure unloading and customs clearance at port of disembarkation in recipient country		
	1) Marine (Air) transportation of the products from Japan to the recipient country	●	
	2) Tax exemption and custom clearance of the products at the port of disembarkation		●
	3) Internal transportation from the port of disembarkation to the project site	(●)	(●)
10	To accord Japanese nationals whose services may be required in connection with the supply of the products and the services under the verified contract such facilities as may be necessary for their entry into the recipient country and stay therein for the performance of their work.		●



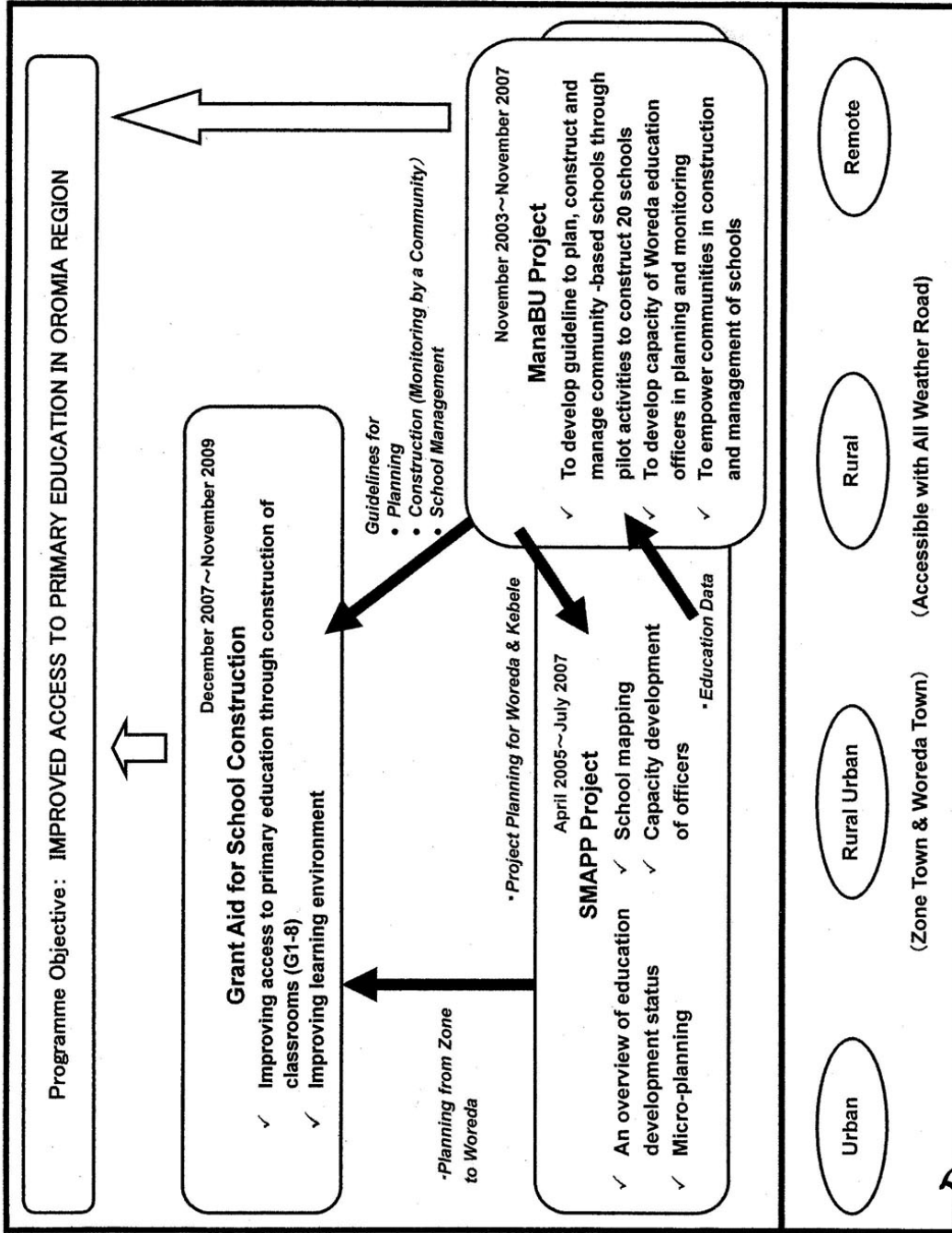
11	To exempt Japanese nationals from customs duties, internal taxes and other fiscal levies which may be imposed in the recipient country with respect to the supply of the products and services under the verified contracts.		●
12	To maintain and use properly and effectively the facilities constructed and equipment provided under the Grant.		●
13	To bear all the expenses, other than those to be borne by the Grant, necessary for construction of the facilities as well as for the transportation and installation of the equipment.		●

(B/A: Banking Arrangement, A/P: Authorization to Pay)

Handwritten signature and initials, possibly 'T' and '2011'.

Small handwritten mark or signature.

Annex 6: Programme for Improving Access to Primary Education in Oromia Region



Annex 7

Criteria for the selection of the Zones/Woredas and of the School Sites for the Project

To maximize the effect of the Project, it is recommended that the zones and woredas for the Project shall be concentrated into certain areas instead of dispersed areas. Criteria for the selection of the zones and woredas for the Project are indicated below.

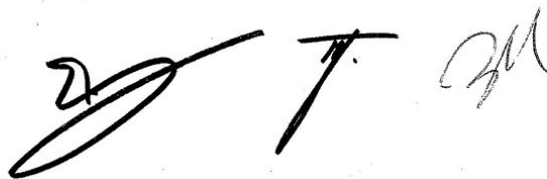
Criteria for the Selection of the zones/woredas for the Project

1. 3 ManaBU Project zones shall be prioritized.
2. The zones/woredas where more classrooms are in shortage shall be prioritized.
3. The zones/woredas where the main roads are in good conditions shall be prioritized.
4. The zones/woredas where primary school constructions were not or will not be implemented by the other donors shall be prioritized.

It is also recommended that the recipient schools of the Project shall be selected in accordance with the following criteria for the smooth implementation of the Project;

Criteria for the Selection of the School Sites for the Project

1. The school sites where classrooms are more in shortage and where there are more school-aged children shall be prioritized.
2. The school sites where the complete schools were or will be constructed according to the High Standard shall be eliminated from the Project.
3. For newly established school sites, the sites where there is no other school within the radius of 3 km shall be prioritized.
4. The school sites where the vehicles for the construction activities are accessible shall be prioritized.
5. The school sites without any natural calamities such as landslides and flooding etc. shall be prioritized
6. The school sites with land ownership documents shall be prioritized.
7. The school sites with available space of the construction for the additional classrooms will be prioritized.
8. The school sites where additional teachers are secured to be assigned shall be prioritized.
9. The school sites where Kebele Education and Training Management Boards are established with adequate operating and maintenance budgets shall be prioritized.

Handwritten signatures and initials in black ink, including a large stylized signature on the left, a vertical mark in the center, and a cursive signature on the right.A small handwritten mark or signature in the bottom right corner of the page.