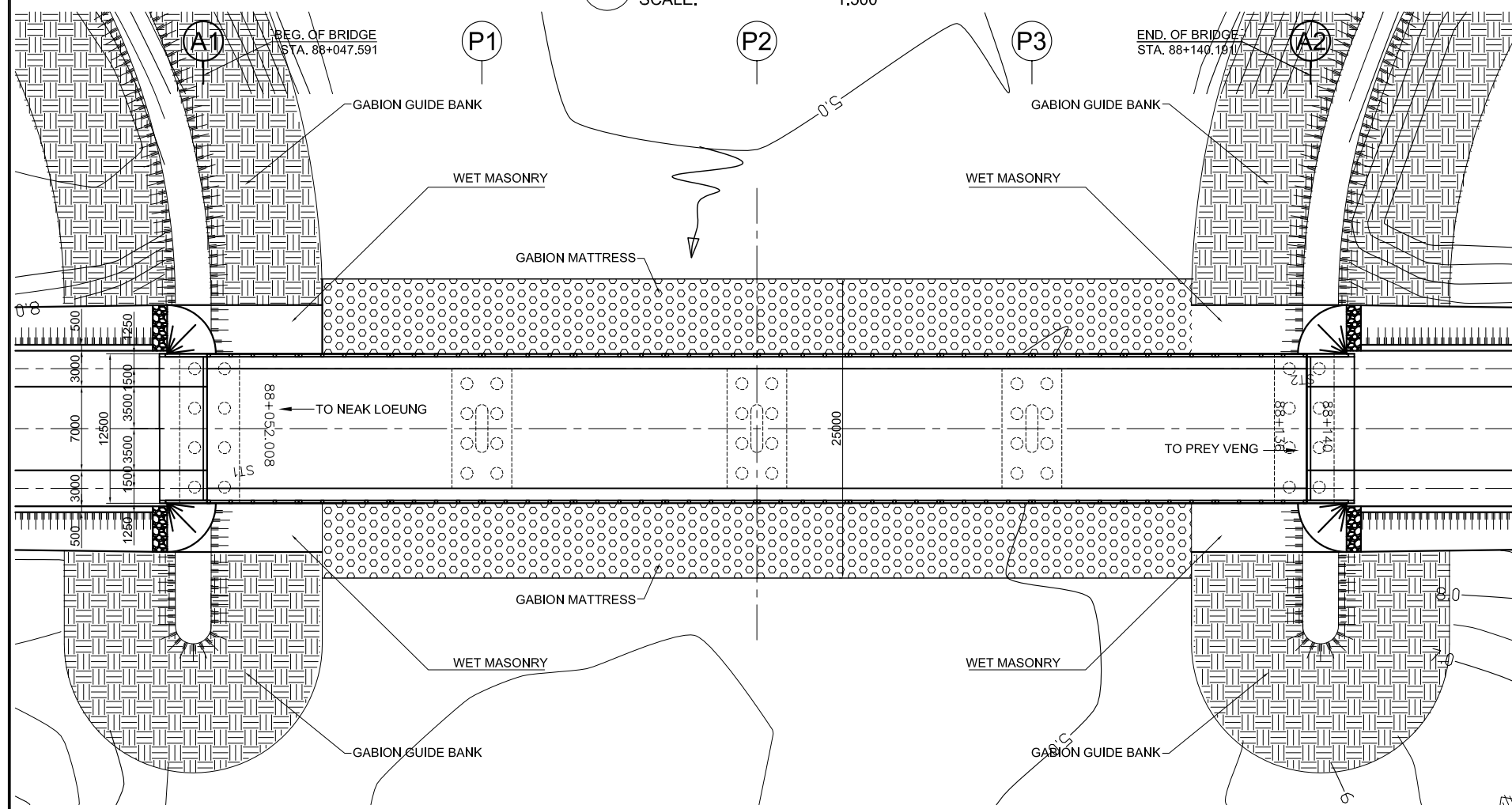
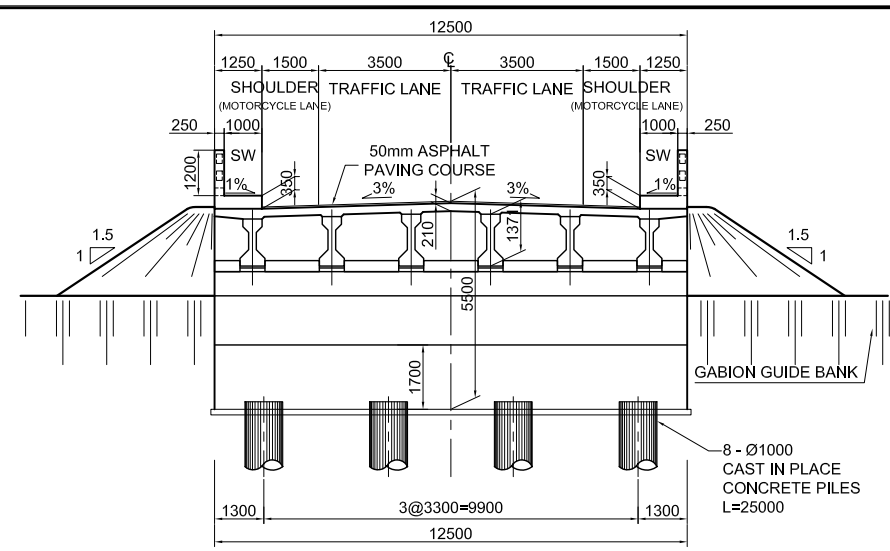


1 BRIDGE ELEVATION
SCALE: 1:500

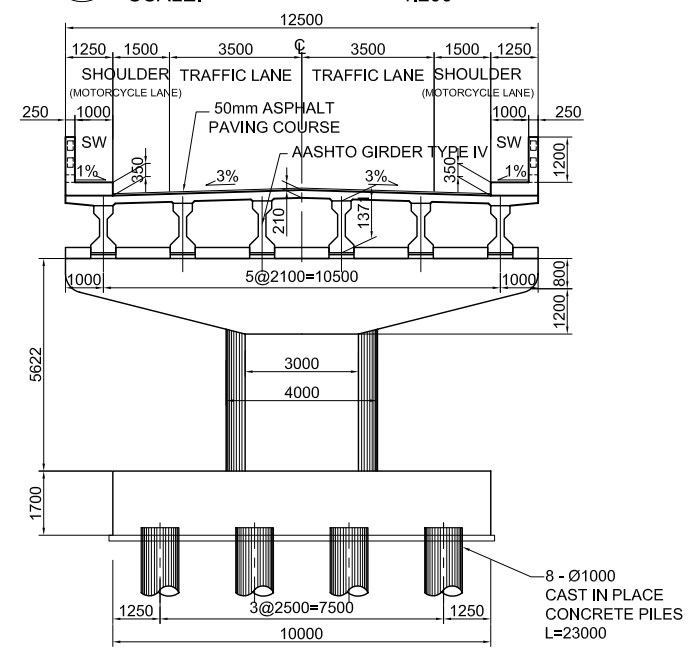


2 PLAN VIEW
SCALE: 1:500

NOTE: EXISTING GABION GUIDE BANK SHALL BE ADJUSTED TO NEW BRIDGE LENGTH.



3 ABUTMENT SECTION
SCALE: 1:200



4 PIER SECTION
SCALE: 1:200

GENERAL NOTES:

- BASIC DESIGN SPECIFICATION : "CAMBODIAN BRIDGE DESIGN STANDARD (CBDS), CAM PW. 04.102.99, MPWT, 2003".
- MATERIALS
 - CONCRETE STRENGTHS SHALL BE :

TYPE	MEMBER	28 TH DAY COMPRESSIVE STRENGTH (MPa)
1. REINFORCED CONCRETE	DECK SLAB, RAILINGS, SIDEWALK, RC GIRDERS, DIAPHRAGMS, COPING BEAMS, PIER COLUMNS, FOOTING, PILE CAP, RC DRIVEN PILES, RC CAST-IN-PLACE PILES, ABUTMENT	32
2. PRESTRESSED CONCRETE	PRESTRESSED CONCRETE BEAMS (AASHTO TYPE)	42
3. LEAN CONCRETE	LEAN CONCRETE BELOW FOOTING	18
 - REINFORCING STEEL
YIELD STRENGTH FOR REINFORCING BARS (ASTM A615) SHALL BE:
PLAIN, $F_y = 250\text{MPa}$
DEFORMED, $F_y = 400\text{MPa}$
 - PRESTRESSING STEEL SHALL BE 7-WIRE ASTM A416 $f_p = 1860\text{MPa}$.
 - BRIDGE BEARING SHALL BE ELASTOMERIC TYPE WITH HARDNESS OF DURO 60.
- SLOPE PROTECTION FOR BRIDGE SHALL BE WET MASONRY TYPE WITH BOULDER SIZE GREATER THAN 200MM.
- THE RIVER SECTION (WATERWAY) SHALL BE CLEARED OF ALL OBSTRUCTION INCLUDING EXISTING OLD BRIDGE STRUCTURES. EXISTING BRIDGE AND OTHER STRUCTURES SHALL BE DEMOLISHED AND REMOVED FROM THE RIVER WATERWAY.



MINISTRY OF PUBLIC WORKS AND TRANSPORT
Cnr Norodom Blvd & St 106, Phnom Penh, Kingdom Cambodia
Tel : (855) 23 426099 - Fax : (855) 23 426098

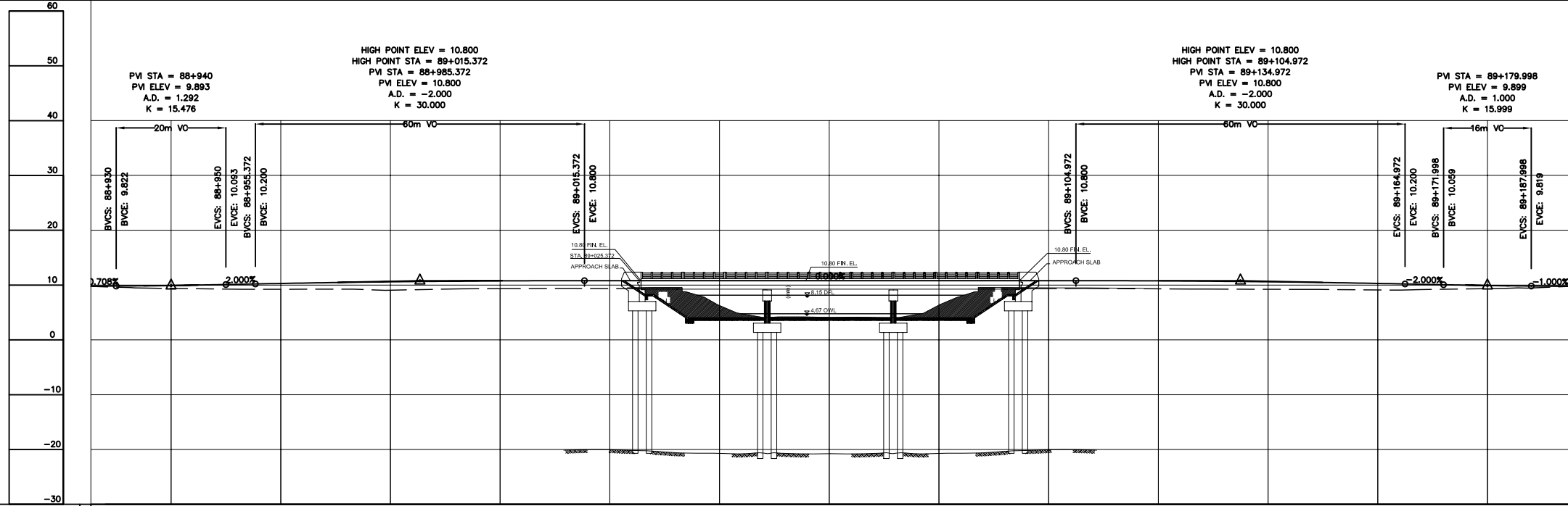
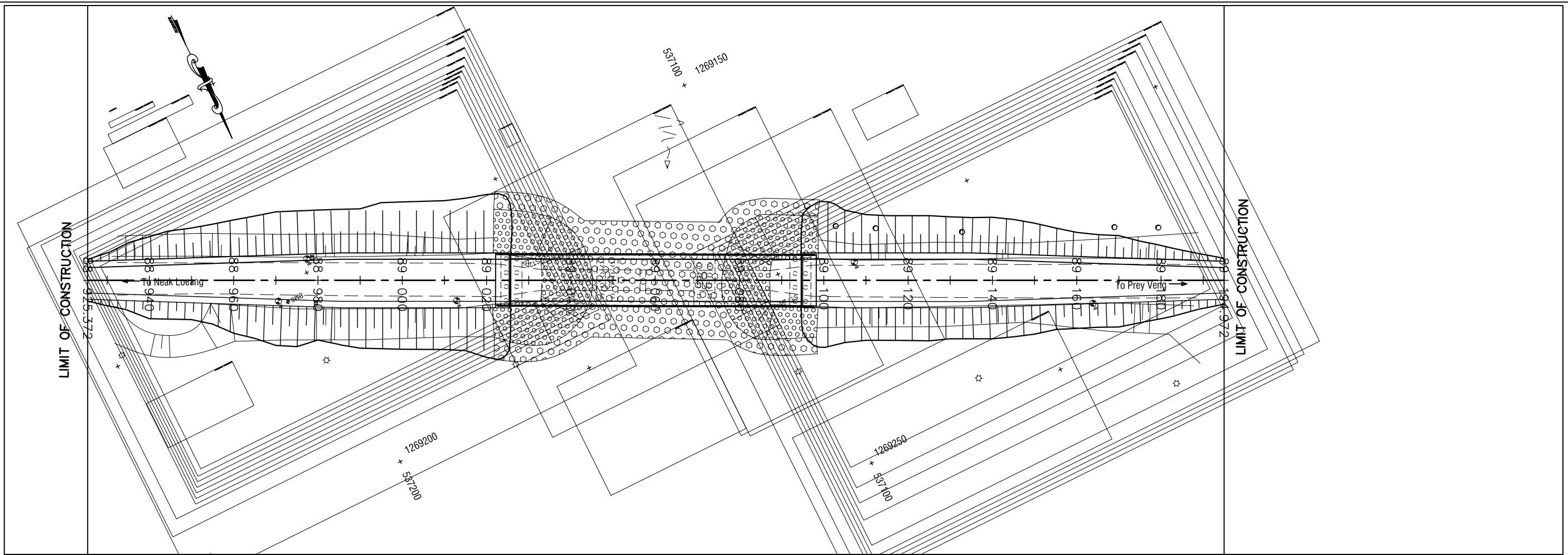
THE STUDY ON THE ROAD NETWORK DEVELOPMENT IN THE KINGDOM OF CAMBODIA
PRE-FEASIBILITY STUDY ON URGENT BRIDGE REHABILITATION

JAPAN INTERNATIONAL COOPERATION AGENCY
NIPPON KOEI CO., LTD. & KATAHIRA & ENGINEERS INTERNATIONAL

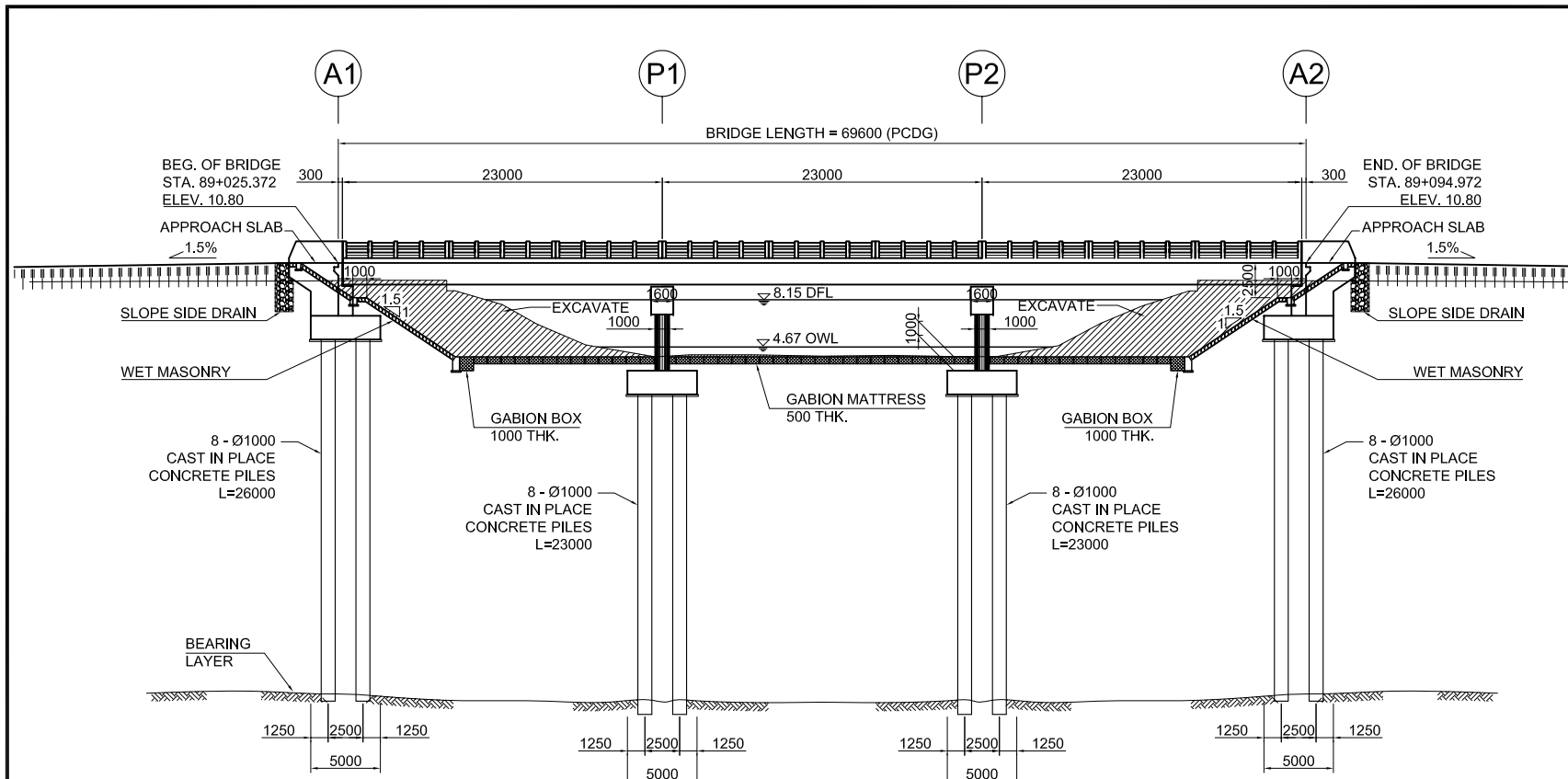
TITLE :
BRIDGE No.5 NR-11 STA.88+047.591
GENERAL PLAN, ELEVATION, AND SECTION

SCALE
AS SHOWN

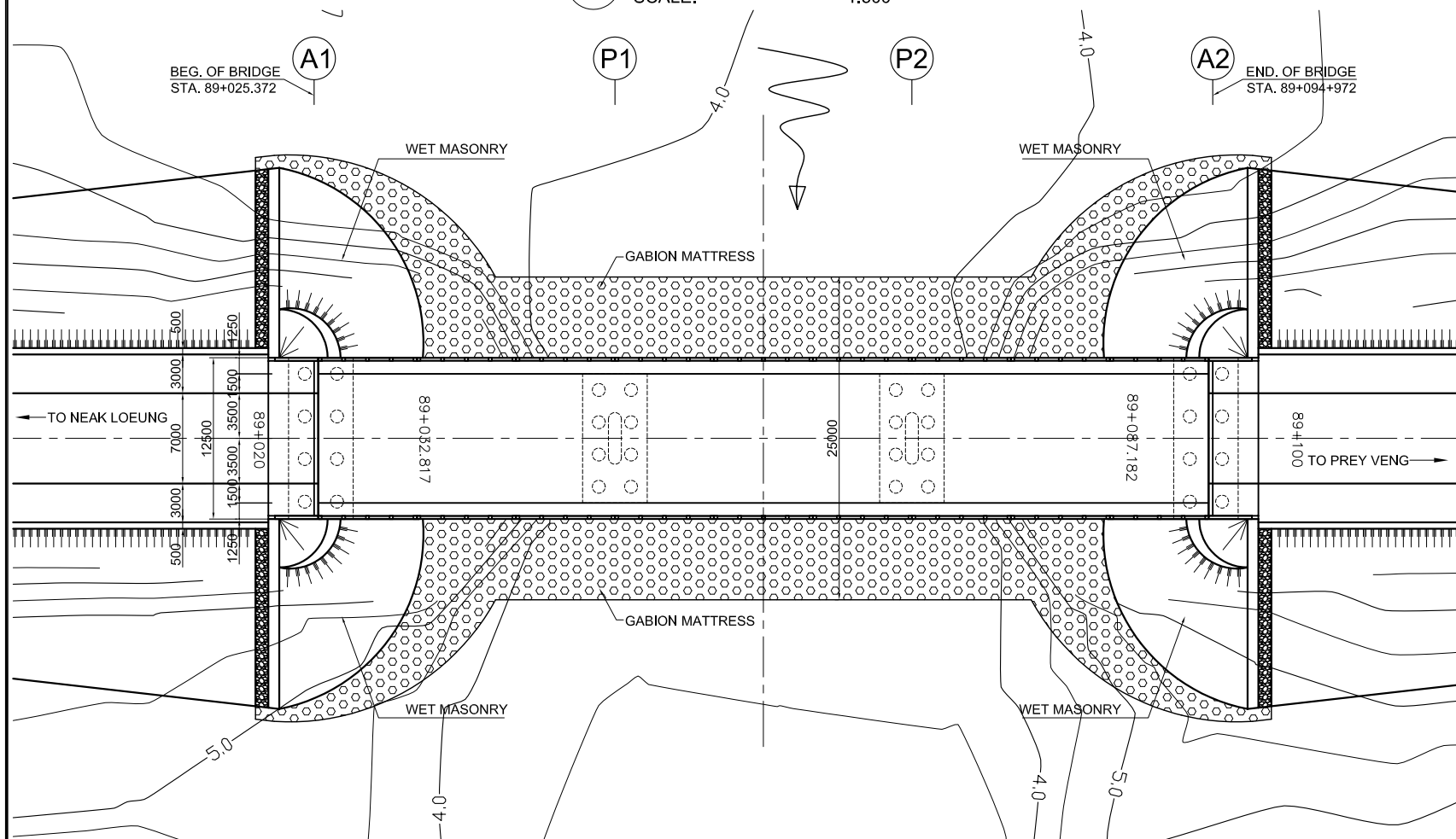
DRAWING No :
B-14



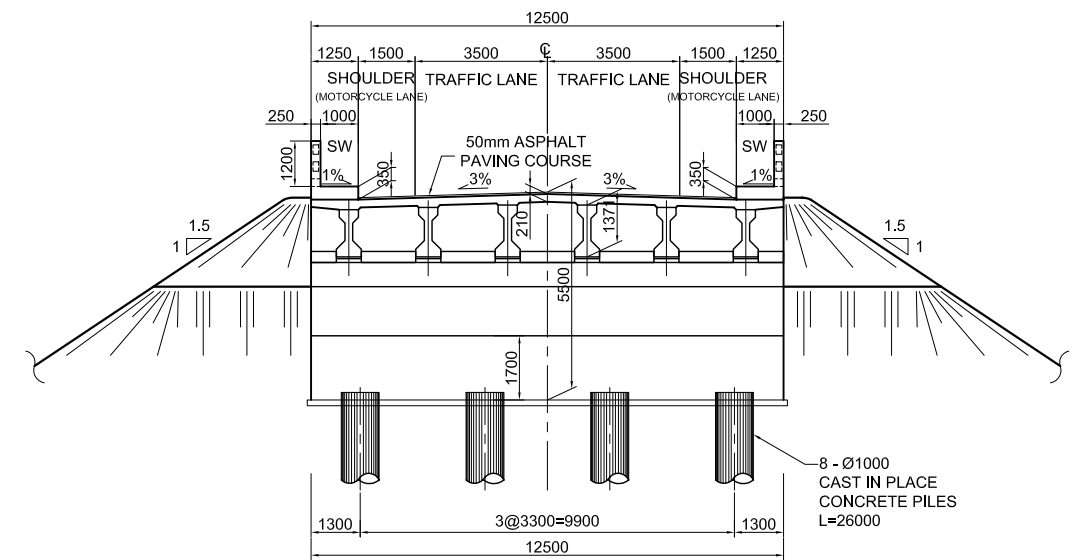
PROPOSED HEIGHT	9.759	9.925	10.289	10.591	10.761	10.800	10.800	10.800	10.800	10.800	10.762	10.596	10.295	9.919	9.750
EXISTING HEIGHT	9.368	9.208	9.232	9.063	9.344	9.359	6.008	3.830	5.746	9.341	9.308	9.227	9.100	9.127	
STATION	88+925	88+940	88+960	88+980	89+000	89+020	89+040	89+060	89+080	89+100	89+120	89+140	89+160	89+180	89+195



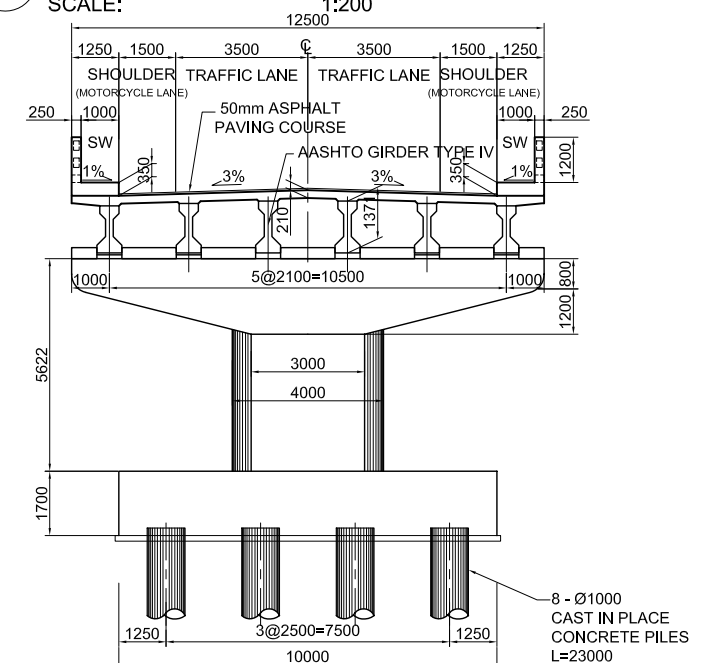
1 BRIDGE ELEVATION
SCALE: 1:500



2 PLAN VIEW
SCALE: 1:500



3 ABUTMENT SECTION
SCALE: 1:200



4 PIER SECTION
SCALE: 1:200

GENERAL NOTES:

- BASIC DESIGN SPECIFICATION : "CAMBODIAN BRIDGE DESIGN STANDARD (CBDS), CAM PW. 04.102.99, MPWT, 2003".
- MATERIALS
 - CONCRETE STRENGTHS SHALL BE :

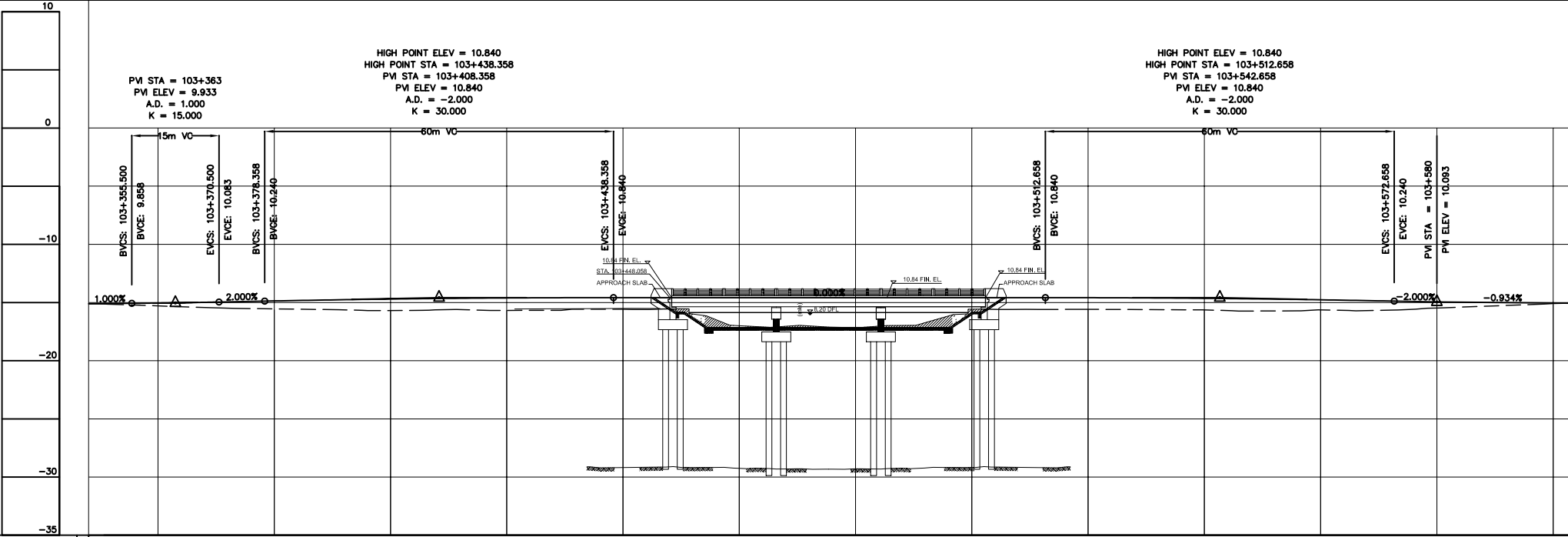
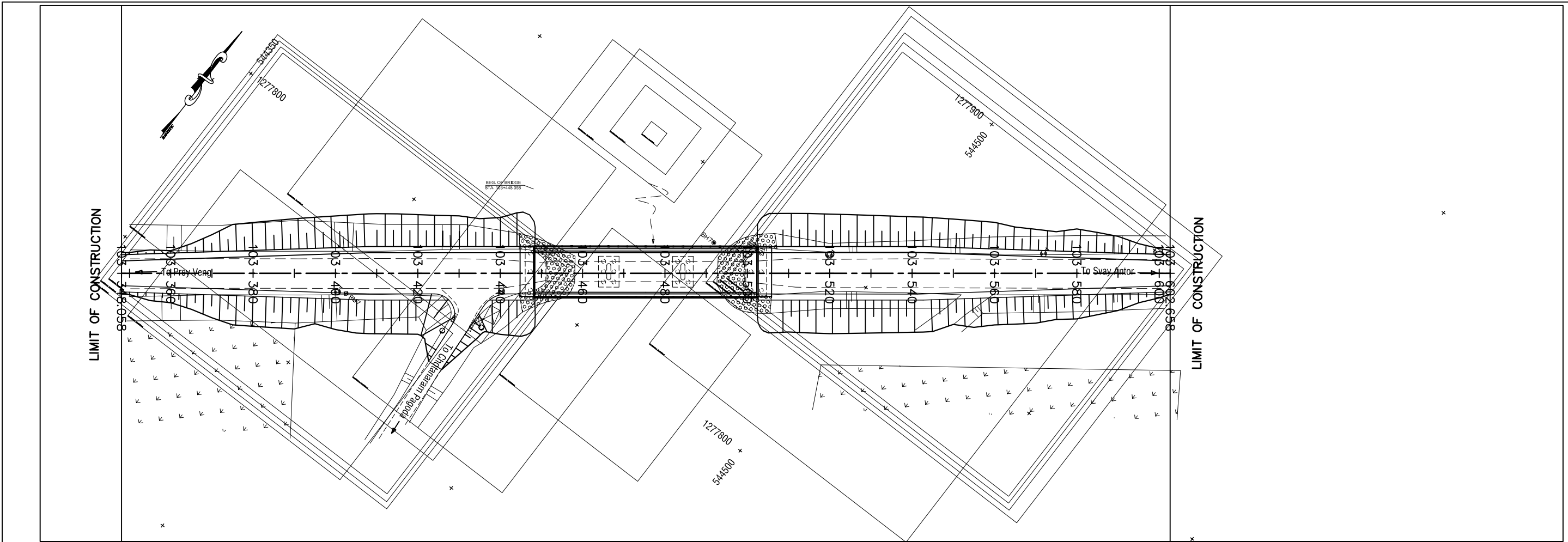
TYPE	MEMBER	28 TH DAY COMPRESSIVE STRENGTH (MPa)
1. REINFORCED CONCRETE	DECK SLAB, RAILINGS, SIDEWALK, RC GIRDERS, DIAPHRAGMS, COPING BEAMS, PIER COLUMNS, FOOTING, PILE CAP, RC DRIVEN PILES, RC CAST-IN-PLACE PILES, ABUTMENT	32
2. PRESTRESSED CONCRETE	PRESTRESSED CONCRETE BEAMS (AASHTO TYPE)	42
3. LEAN CONCRETE	LEAN CONCRETE BELOW FOOTING	18

- REINFORCING STEEL
YIELD STRENGTH FOR REINFORCING BARS (ASTM A615) SHALL BE:
PLAIN, $F_y = 250$ MPa
DEFORMED, $F_y = 400$ MPa

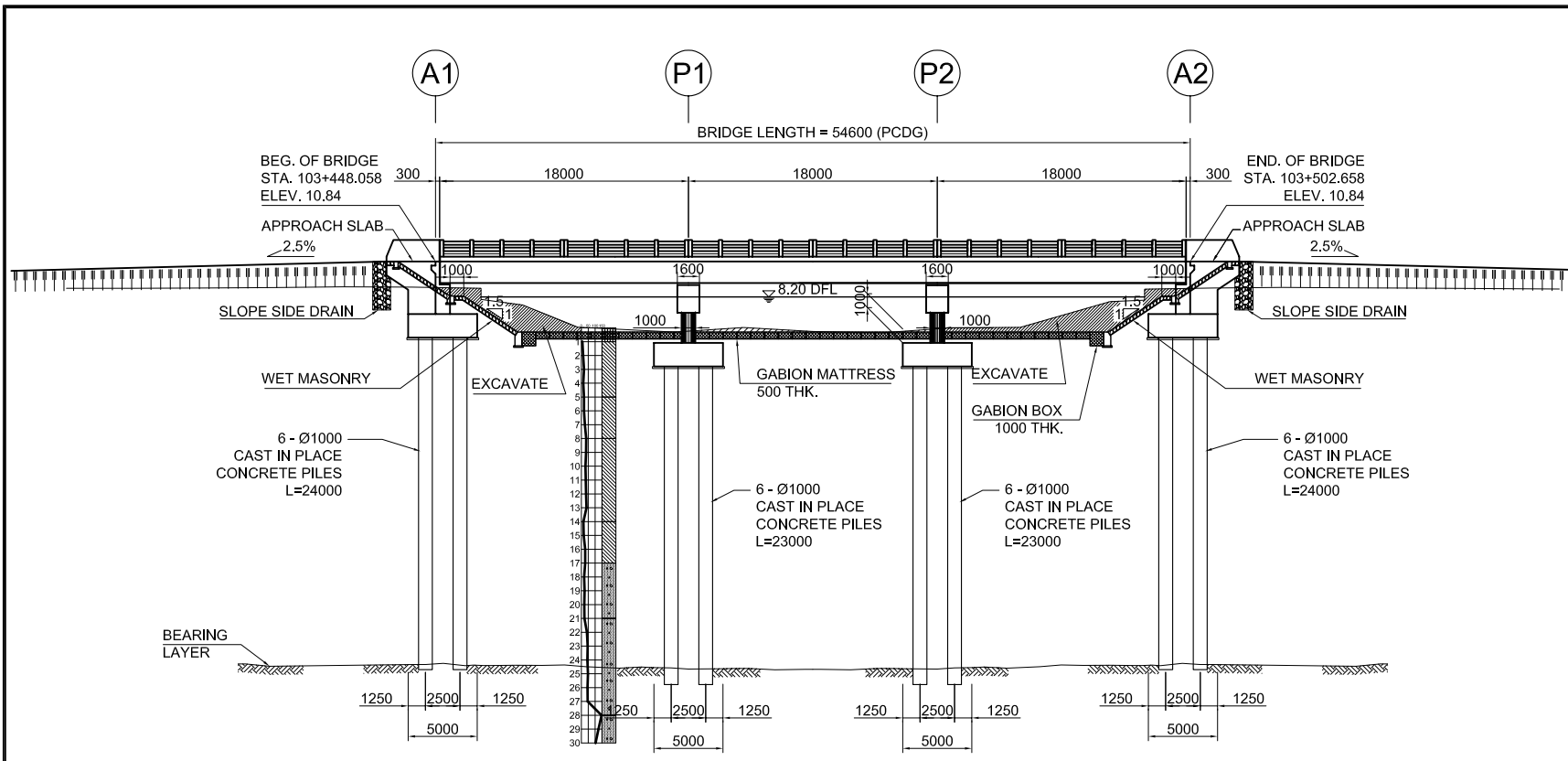
- PRESTRESSING STEEL SHALL BE 7-WIRE ASTM A416 $f_p = 1860$ MPa.
- BRIDGE BEARING SHALL BE ELASTOMERIC TYPE WITH HARDNESS OF DURO 60.

- SLOPE PROTECTION FOR BRIDGE SHALL BE WET MASONRY TYPE WITH BOULDER SIZE GREATER THAN 200MM.
- THE RIVER SECTION (WATERWAY) SHALL BE CLEARED OF ALL OBSTRUCTION INCLUDING EXISTING OLD BRIDGE STRUCTURES. EXISTING BRIDGE AND OTHER STRUCTURES SHALL BE DEMOLISHED AND REMOVED FROM THE RIVER WATERWAY.

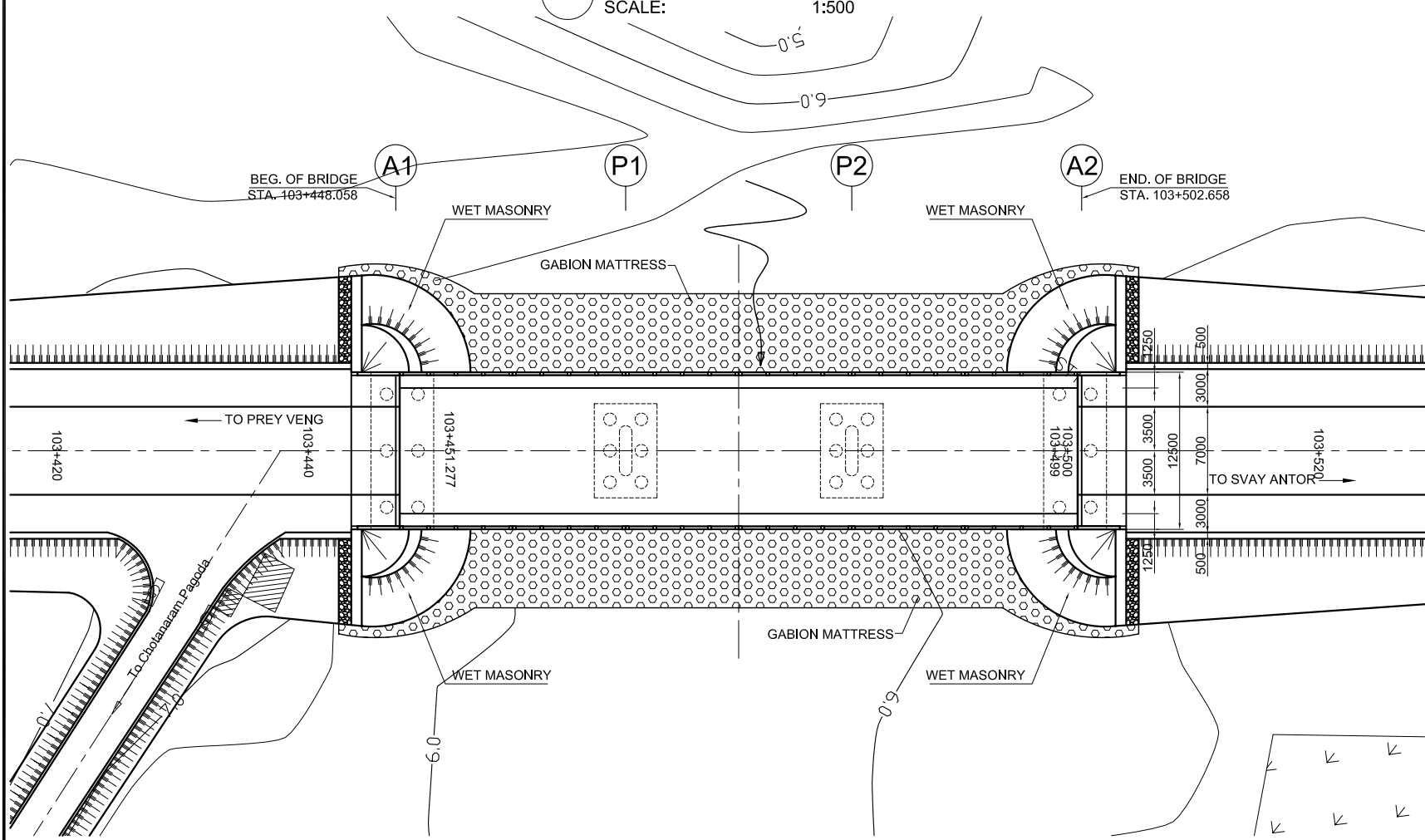




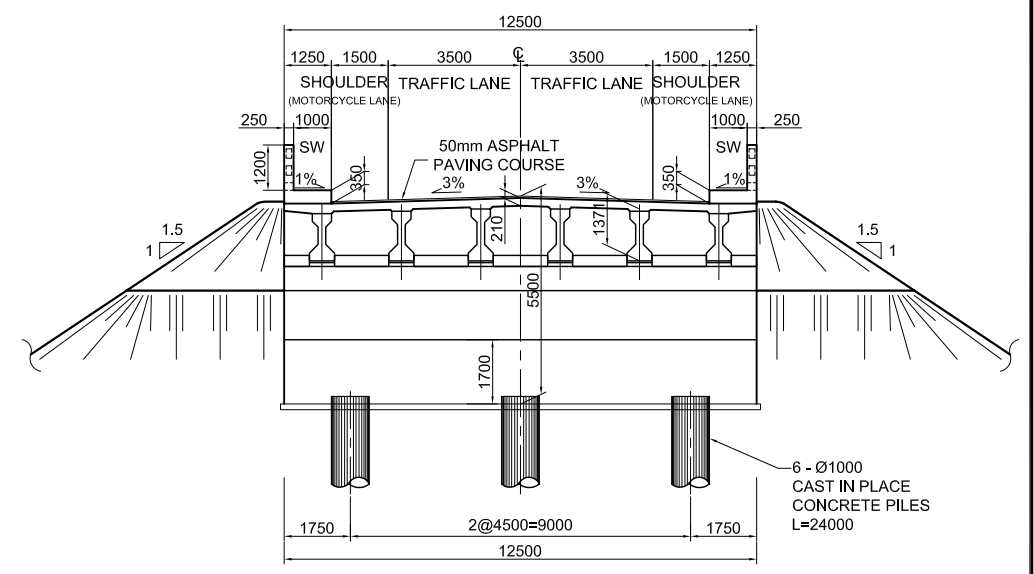
PROPOSED HEIGHT	9.783	9.910	10.272	10.595	10.784	10.840	10.840	10.840	10.840	10.831	10.715	10.466	10.093	9.906	9.881
EXISTING HEIGHT	9.736	9.293	8.753	8.623	8.638	8.841	6.027	6.065	8.766	8.825	8.729	8.734	8.734	9.696	9.881
STATION	103+348	103+360	103+380	103+400	103+420	103+440	103+460	103+480	103+500	103+520	103+540	103+560	103+580	103+600	103+603



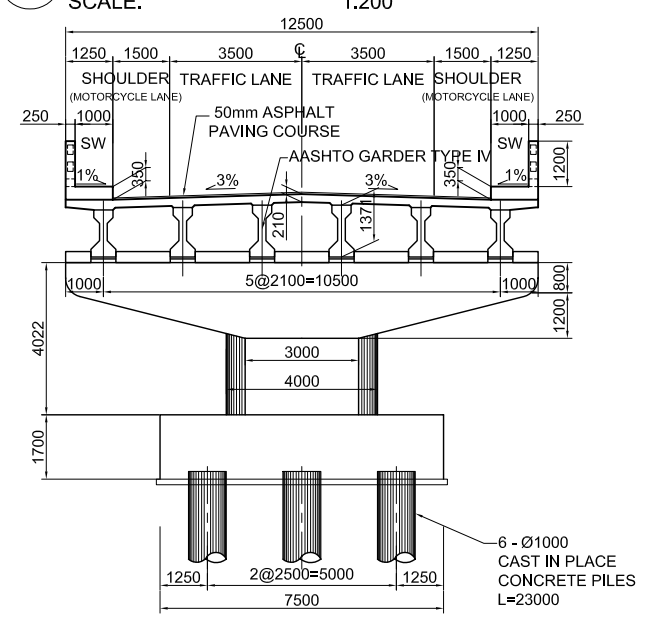
1 BRIDGE ELEVATION
SCALE: 1:500



2 PLAN VIEW
SCALE: 1:500



3 ABUTMENT SECTION
SCALE: 1:200



4 PIER SECTION
SCALE: 1:200

GENERAL NOTES:

- BASIC DESIGN SPECIFICATION : "CAMBODIAN BRIDGE DESIGN STANDARD (CBDS), CAM PW. 04.102.99, MPWT, 2003".
- MATERIALS
 - CONCRETE STRENGTHS SHALL BE :

TYPE	MEMBER	28 TH DAY COMPRESSIVE STRENGTH (MPa)
1. REINFORCED CONCRETE	DECK SLAB, RAILINGS, SIDEWALK, RC GIRDBERS, DIAPHRAGMS, COPING BEAMS, PIER COLUMNS, FOOTING, PILE CAP, RC DRIVEN PILES, RC CAST-IN-PLACE PILES, ABUTMENT	32
2. PRESTRESSED CONCRETE	PRESTRESSED CONCRETE BEAMS (AASHTO TYPE)	42
3. LEAN CONCRETE	LEAN CONCRETE BELOW FOOTING	18
 - REINFORCING STEEL
YIELD STRENGTH FOR REINFORCING BARS (ASTM A615) SHALL BE:
PLAIN, $F_y = 250\text{MPa}$
DEFORMED, $F_y = 400\text{MPa}$
 - PRESTRESSING STEEL SHALL BE 7-WIRE ASTM A416 $f_p = 1860\text{MPa}$.
 - BRIDGE BEARING SHALL BE ELASTOMERIC TYPE WITH HARDNESS OF DURO 60.
- SLOPE PROTECTION FOR BRIDGE SHALL BE WET MASONRY TYPE WITH BOULDER SIZE GREATER THAN 200MM.
- THE RIVER SECTION (WATERWAY) SHALL BE CLEARED OF ALL OBSTRUCTION INCLUDING EXISTING OLD BRIDGE STRUCTURES. EXISTING BRIDGE AND OTHER STRUCTURES SHALL BE DEMOLISHED AND REMOVED FROM THE RIVER WATERWAY.