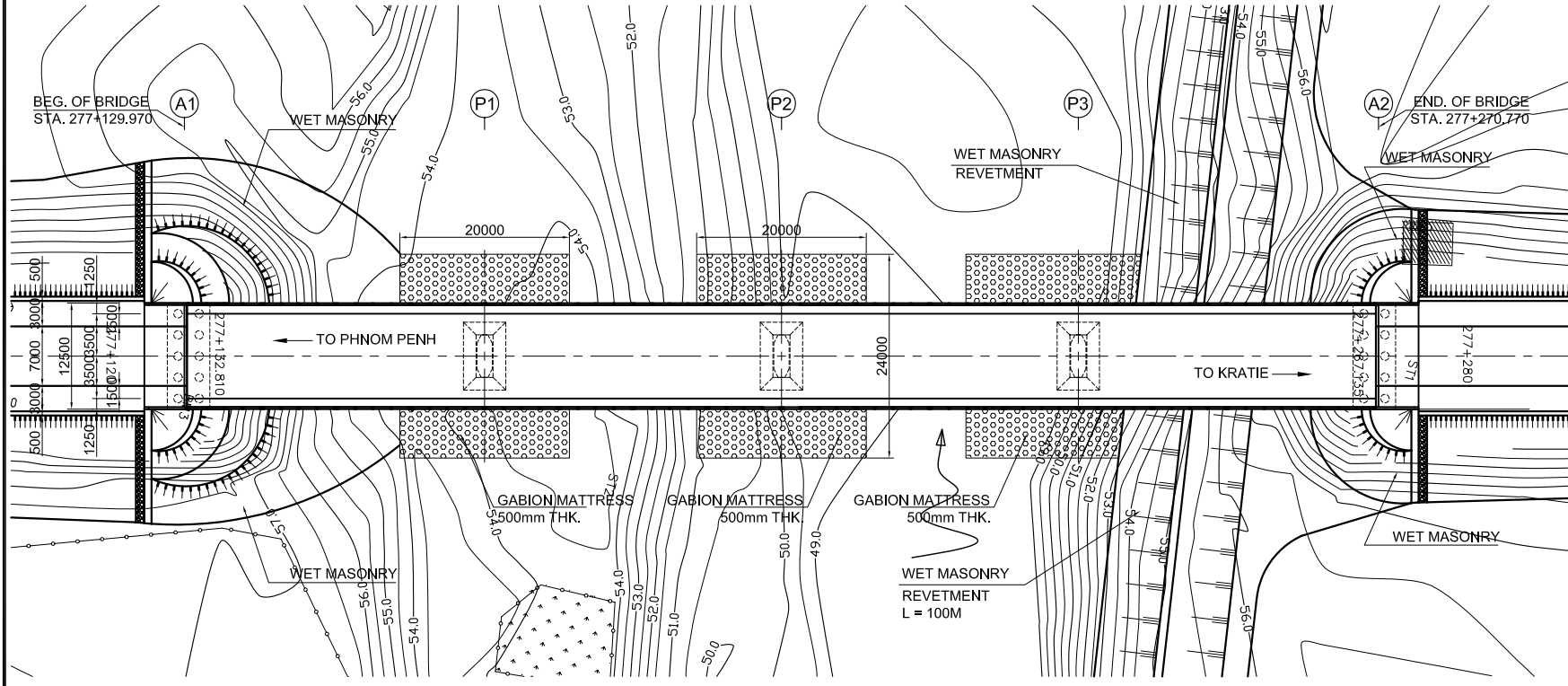
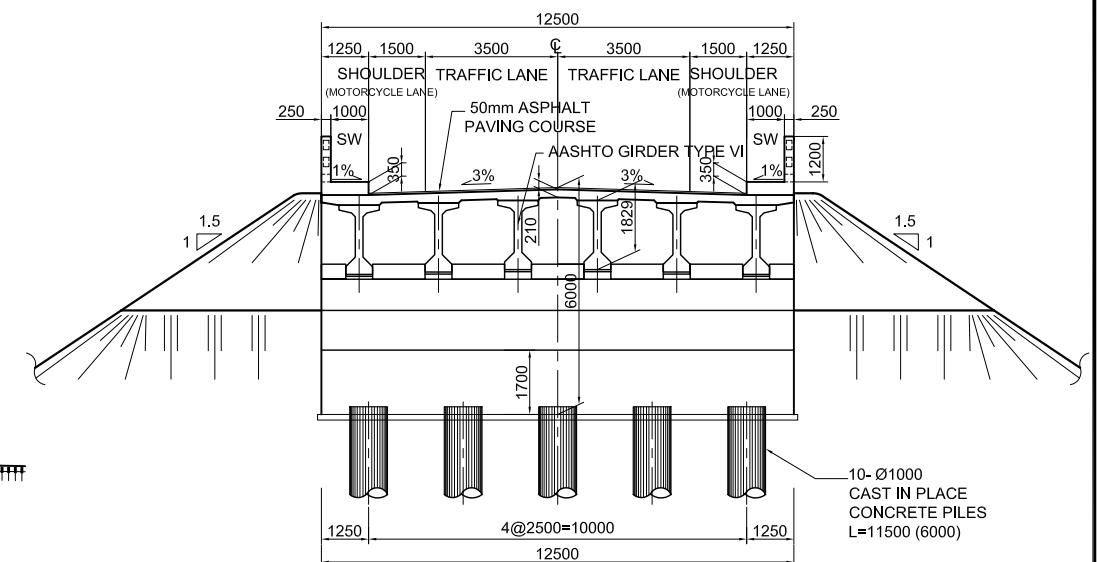


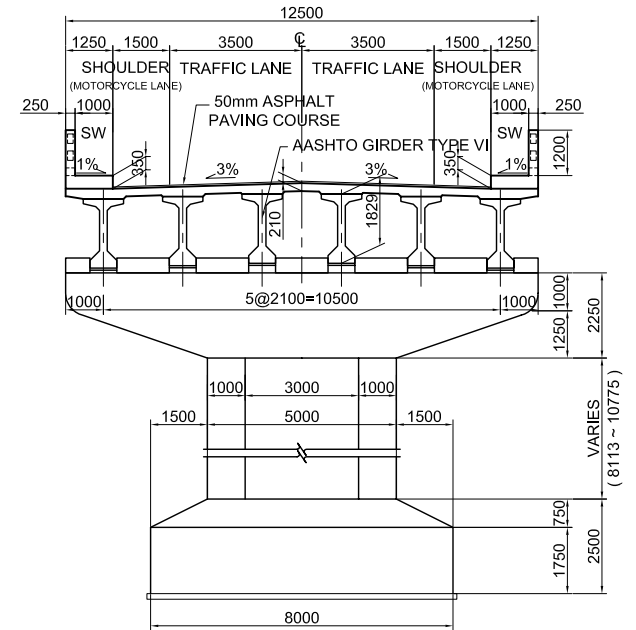
1 BRIDGE ELEVATION
SCALE: 1:800



2 PLAN VIEW
SCALE: 1:800



3 ABUTMENT SECTION
SCALE: 1:200

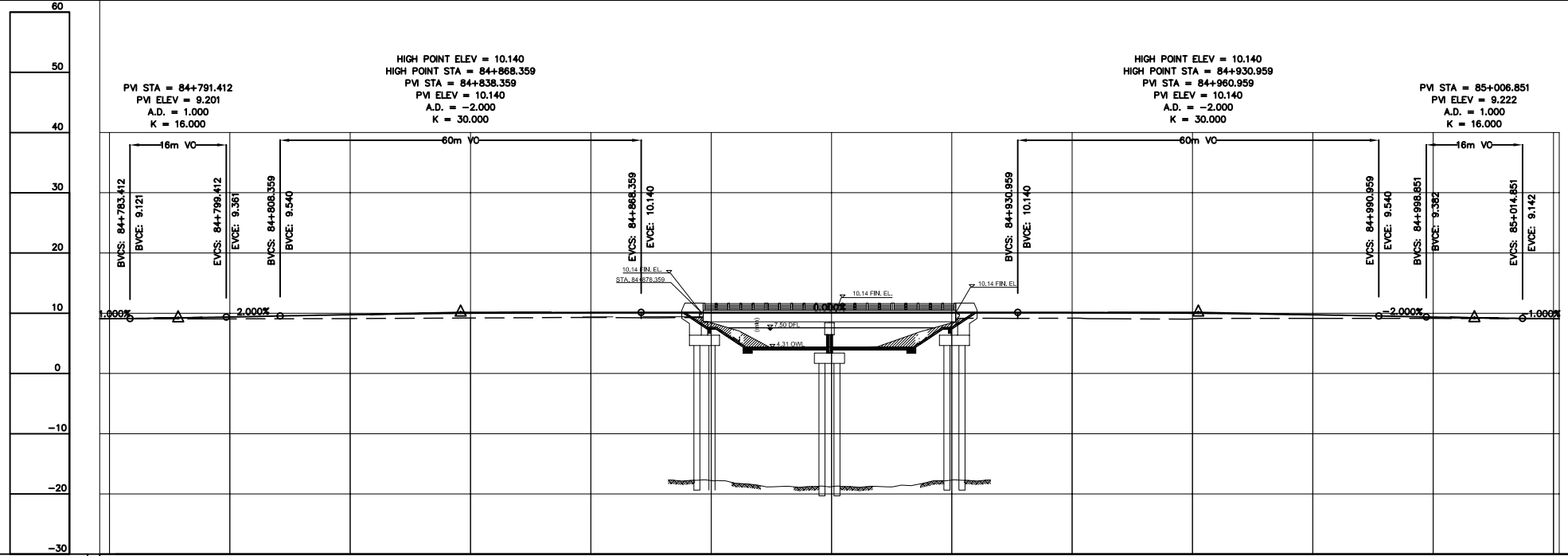
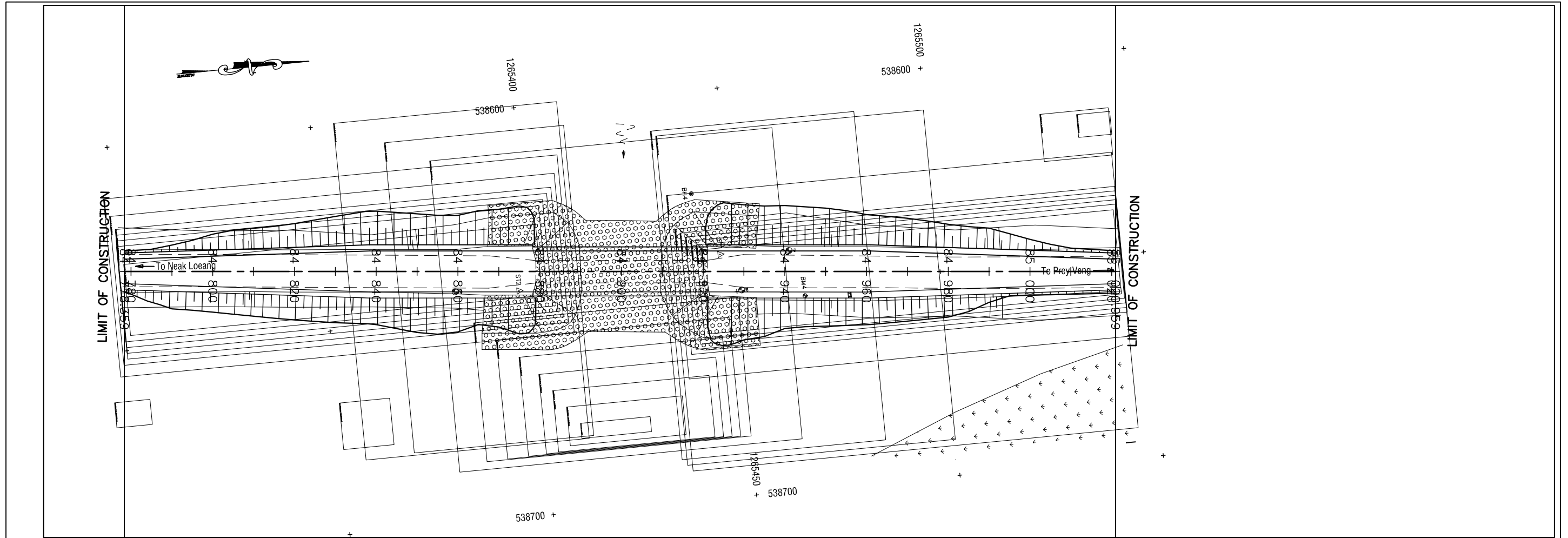


4 PIER SECTION
SCALE: 1:200

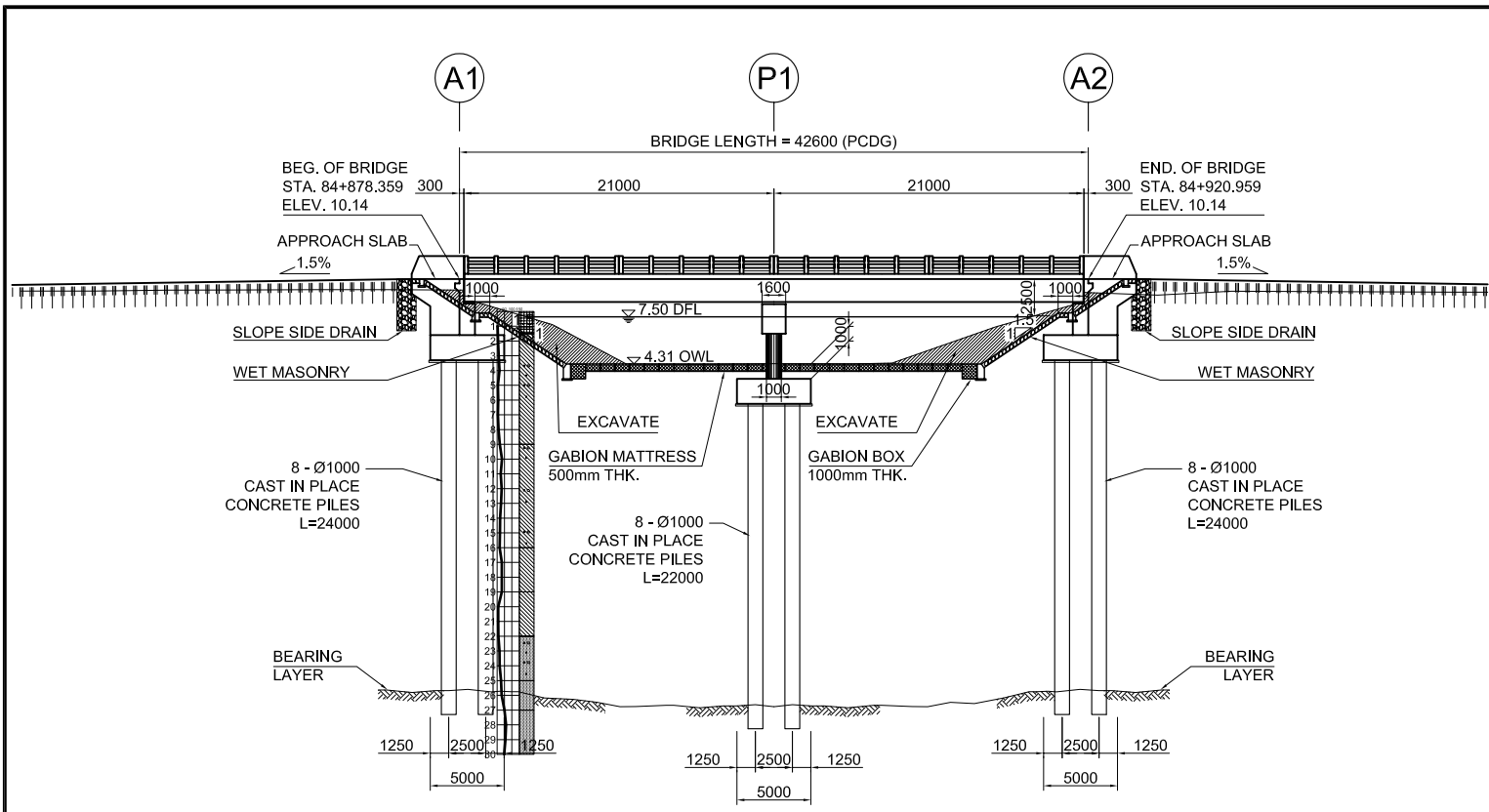
GENERAL NOTES:

- BASIC DESIGN SPECIFICATION : "CAMBODIAN BRIDGE DESIGN STANDARD (CBDS), CAM PW. 04.102.99, MPWT, 2003".
- MATERIALS
 - CONCRETE STRENGTHS SHALL BE :

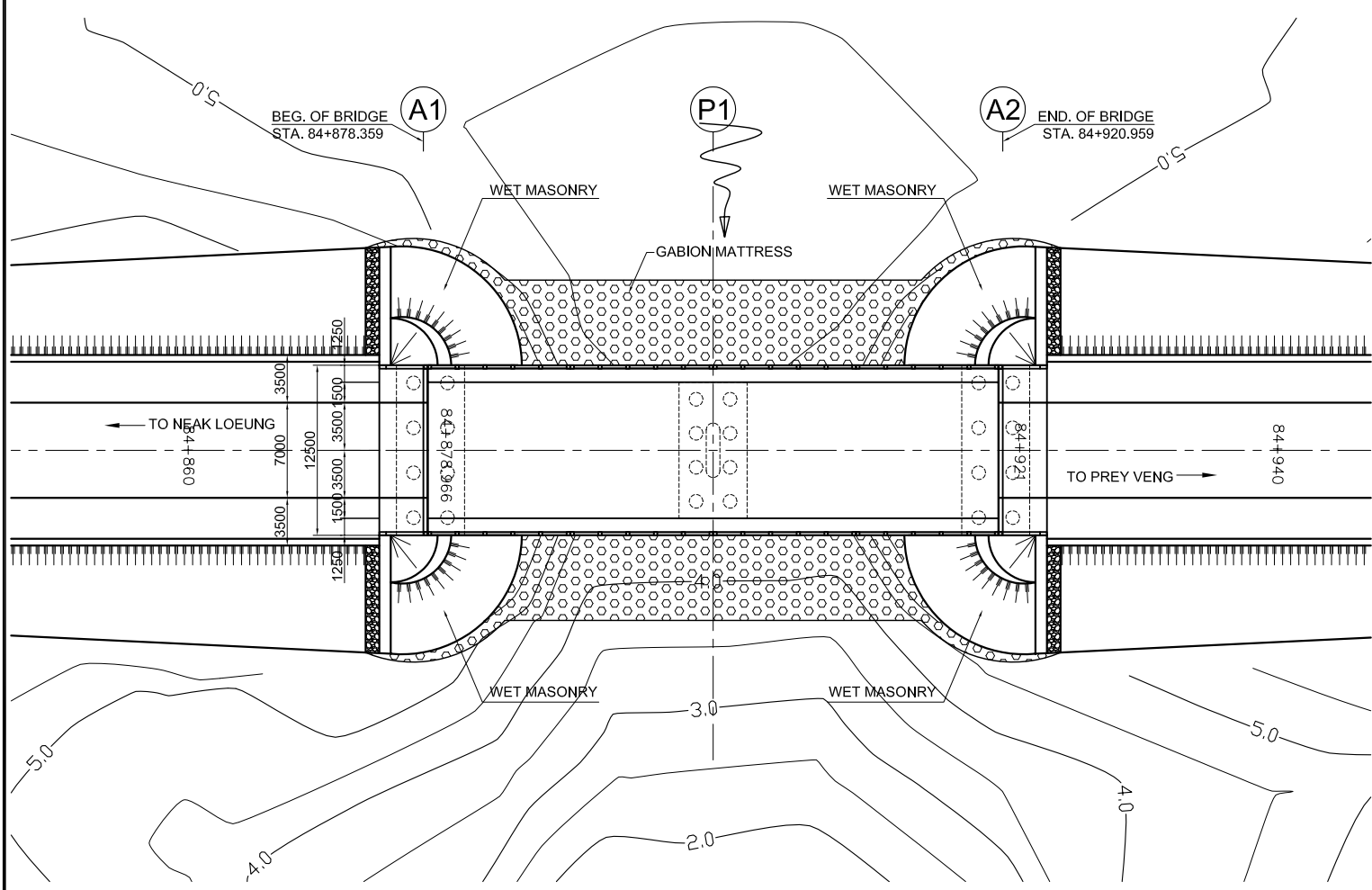
TYPE	MEMBER	28 TH DAY COMPRESSIVE STRENGTH (MPa)
1. REINFORCED CONCRETE	DECK SLAB, RAILINGS, SIDEWALK, RC GIRDERS, DIAPHRAGMS, COPING BEAMS, PIER COLUMNS, FOOTING, PILE CAP, RC DRIVEN PILES, RC CAST-IN-PLACE PILES, ABUTMENT	32
2. PRESTRESSED CONCRETE	PRESTRESSED CONCRETE BEAMS (AASHTO TYPE)	42
3. LEAN CONCRETE	LEAN CONCRETE BELOW FOOTING	18
 - REINFORCING STEEL
YIELD STRENGTH FOR REINFORCING BARS (ASTM A615) SHALL BE:
PLAIN, $F_y = 250\text{MPa}$
DEFORMED, $F_y = 400\text{MPa}$
 - PRESTRESSING STEEL SHALL BE 7-WIRE ASTM A416 $f_p = 1860\text{MPa}$.
 - BRIDGE BEARING SHALL BE ELASTOMERIC TYPE WITH HARDNESS OF DURO 60.
- SLOPE PROTECTION FOR BRIDGE SHALL BE WET MASONRY TYPE WITH BOULDER SIZE GREATER THAN 200MM.
- THE RIVER SECTION (WATERWAY) SHALL BE CLEARED OF ALL OBSTRUCTION INCLUDING EXISTING OLD BRIDGE STRUCTURES. EXISTING BRIDGE AND OTHER STRUCTURES SHALL BE DEMOLISHED AND REMOVED FROM THE RIVER WATERWAY.



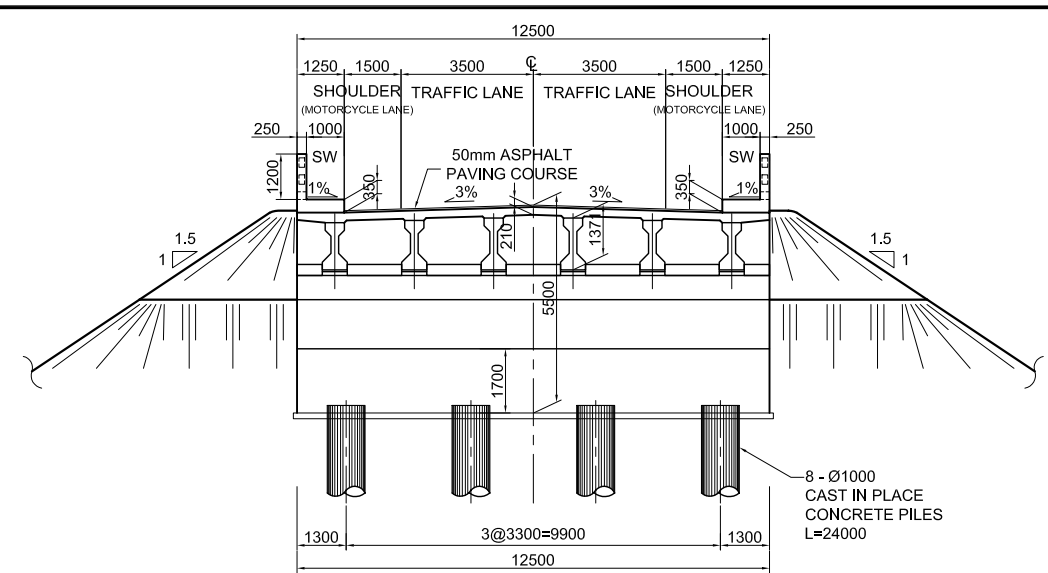
PROPOSED HEIGHT	9.071 9.087	9.373	9.750	10.006	10.128	10.140	10.140	10.140	10.126	9.999	9.739	9.360	9.091 9.081
EXISTING HEIGHT	9.081 9.078	9.065	9.113	9.210	9.296	8.865	4.453	8.658	9.185	9.076	9.147	9.138	9.082
STATION	84+780 84+780	84+800	84+820	84+840	84+860	84+880	84+900	84+920	84+940	84+960	84+980	85+000	85+020 85+021



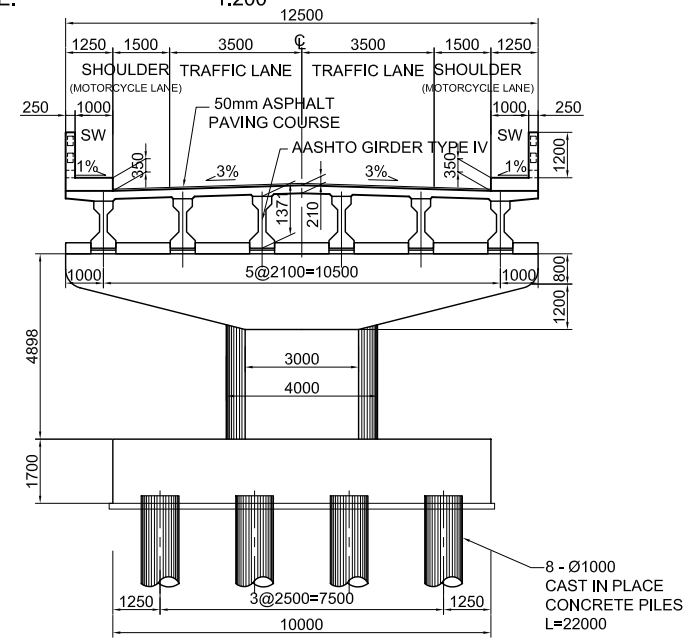
1 BRIDGE ELEVATION
SCALE: 1:500



2 PLAN VIEW
SCALE: 1:500



3 ABUTMENT SECTION
SCALE: 1:200

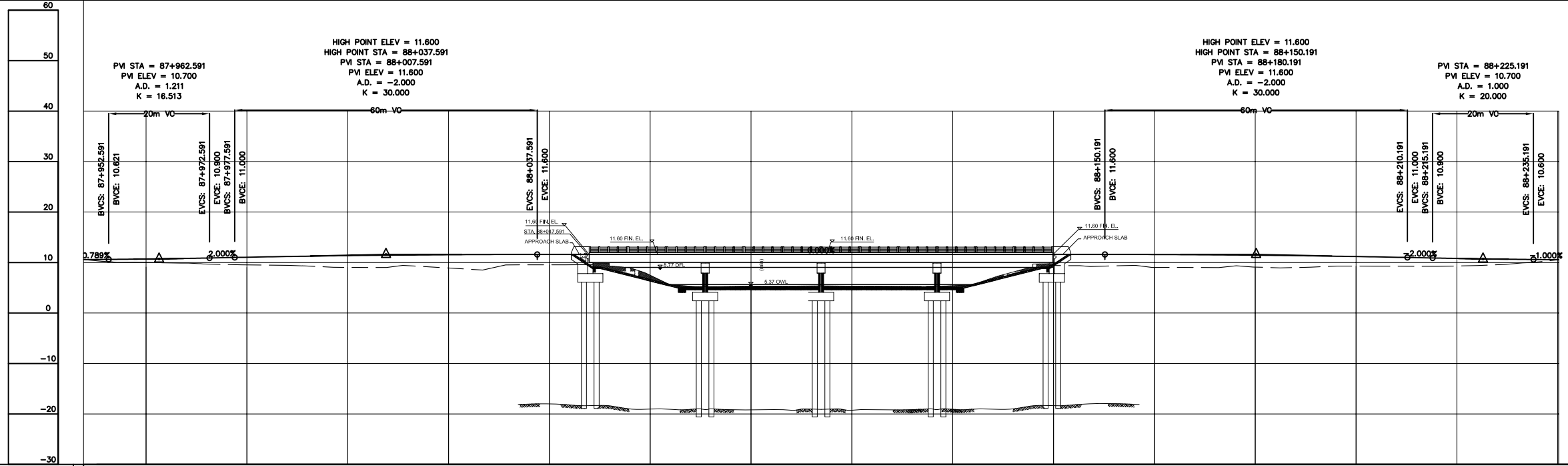
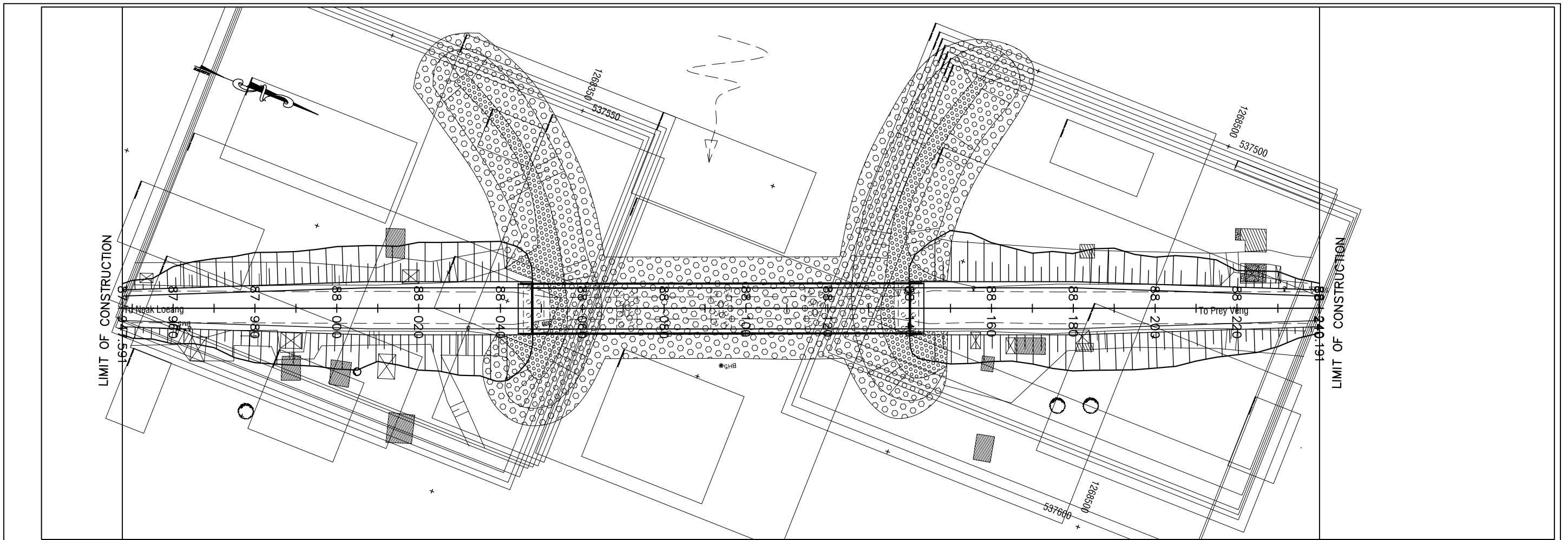


4 PIER SECTION
SCALE: 1:200

GENERAL NOTES:

- BASIC DESIGN SPECIFICATION : "CAMBODIAN BRIDGE DESIGN STANDARD (CBDS), CAM PW. 04.102.99, MPWT, 2003".
- MATERIALS
 - CONCRETE STRENGTHS SHALL BE :

TYPE	MEMBER	28 TH DAY COMPRESSIVE STRENGTH (MPa)
1. REINFORCED CONCRETE	DECK SLAB, RAILINGS, SIDEWALK, RC GIRDERS, DIAPHRAGMS, COPING BEAMS, PIER COLUMNS, FOOTING, PILE CAP, RC DRIVEN PILES, RC CAST-IN-PLACE PILES, ABUTMENT	32
2. PRESTRESSED CONCRETE	PRESTRESSED CONCRETE BEAMS (AASHTO TYPE)	42
3. LEAN CONCRETE	LEAN CONCRETE BELOW FOOTING	18
 - REINFORCING STEEL
YIELD STRENGTH FOR REINFORCING BARS (ASTM A615) SHALL BE:
PLAIN, $F_y = 250\text{MPa}$
DEFORMED, $F_y = 400\text{MPa}$
 - PRESTRESSING STEEL SHALL BE 7-WIRE ASTM A416 $f_p = 1860\text{MPa}$.
 - BRIDGE BEARING SHALL BE ELASTOMERIC TYPE WITH HARDNESS OF DURO 60.
- SLOPE PROTECTION FOR BRIDGE SHALL BE WET MASONRY TYPE WITH BOULDER SIZE GREATER THAN 200MM.
- THE RIVER SECTION (WATERWAY) SHALL BE CLEARED OF ALL OBSTRUCTION INCLUDING EXISTING OLD BRIDGE STRUCTURES. EXISTING BRIDGE AND OTHER STRUCTURES SHALL BE DEMOLISHED AND REMOVED FROM THE RIVER WATERWAY.



PROPOSED HEIGHT	10.582	10.696	11.047	11.364	11.548	11.600	11.600	11.600	11.600	11.600	11.600	11.584	11.452	11.187	10.810	10.550
EXISTING HEIGHT	9.691	9.103	9.044	9.043	8.910	9.544	7.084	4.995	4.974	5.265	9.408	9.041	9.027	9.285	9.139	9.888
STATION	87+948	87+960	87+980	88+000	88+020	88+040	88+060	88+080	88+100	88+120	88+140	88+160	88+180	88+200	88+220	88+240