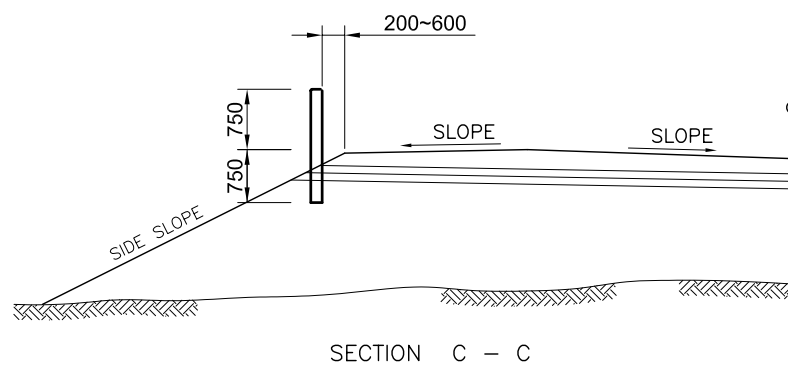
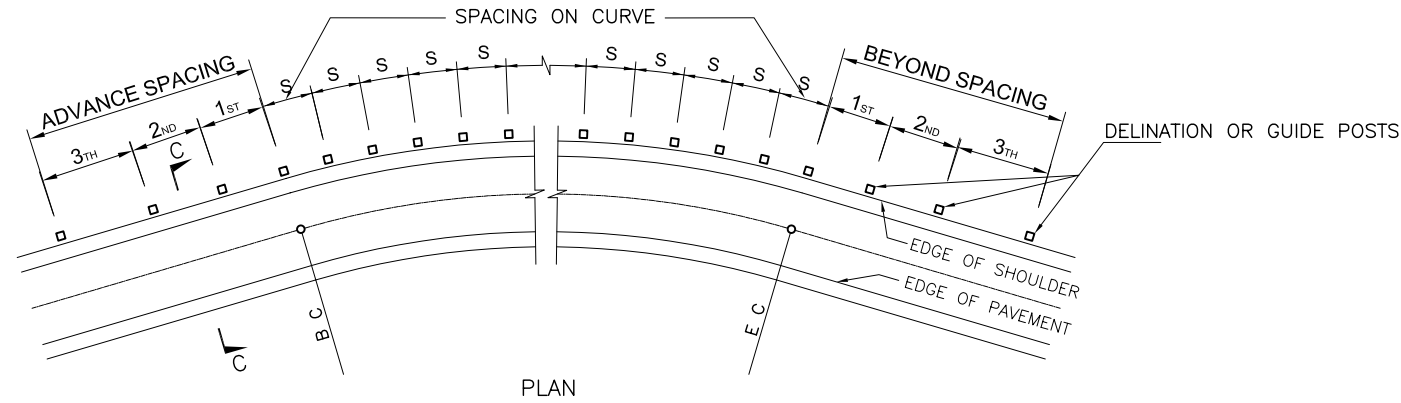
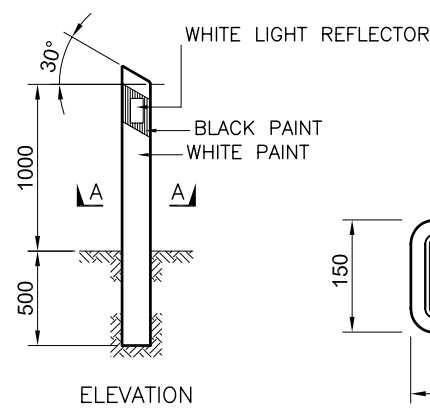
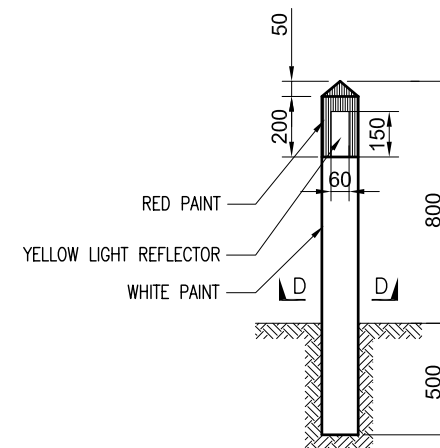
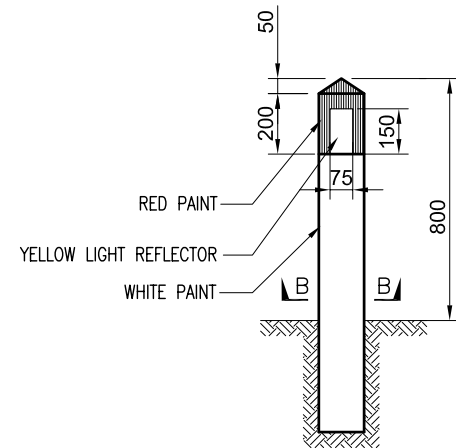


**SPACING FOR DELINEATION AND GUIDE POSTS**

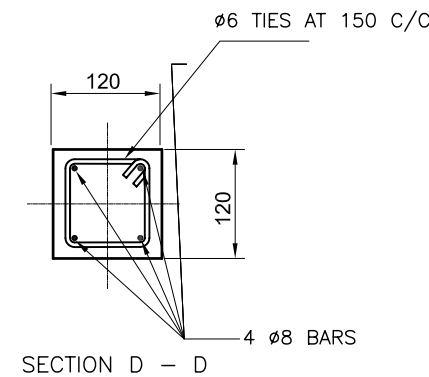
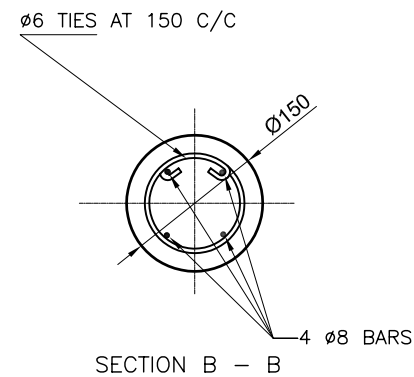
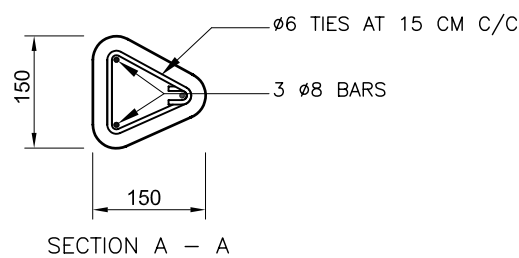
RADIUS IN m	SPACING ON CURVE	SPACING IN ADVANCE & BEYOND CURVE		
		1st SPACE	2nd SPACE	3th SPACE
15-74	4m	7m	12m	24m
75-99	6m	11m	18m	36m
100-149	7m	13m	21m	42m
150-199	8m	14m	24m	48m
200-299	9m	16m	27m	54m
300-499	10m	18m	30m	60m
500-999	15m	27m	45m	60m
1000-1500	21m	38m	60m	60m



**DELINEATION OR GUIDE POSTS INSTALLATION**



**DELINEATION POST**

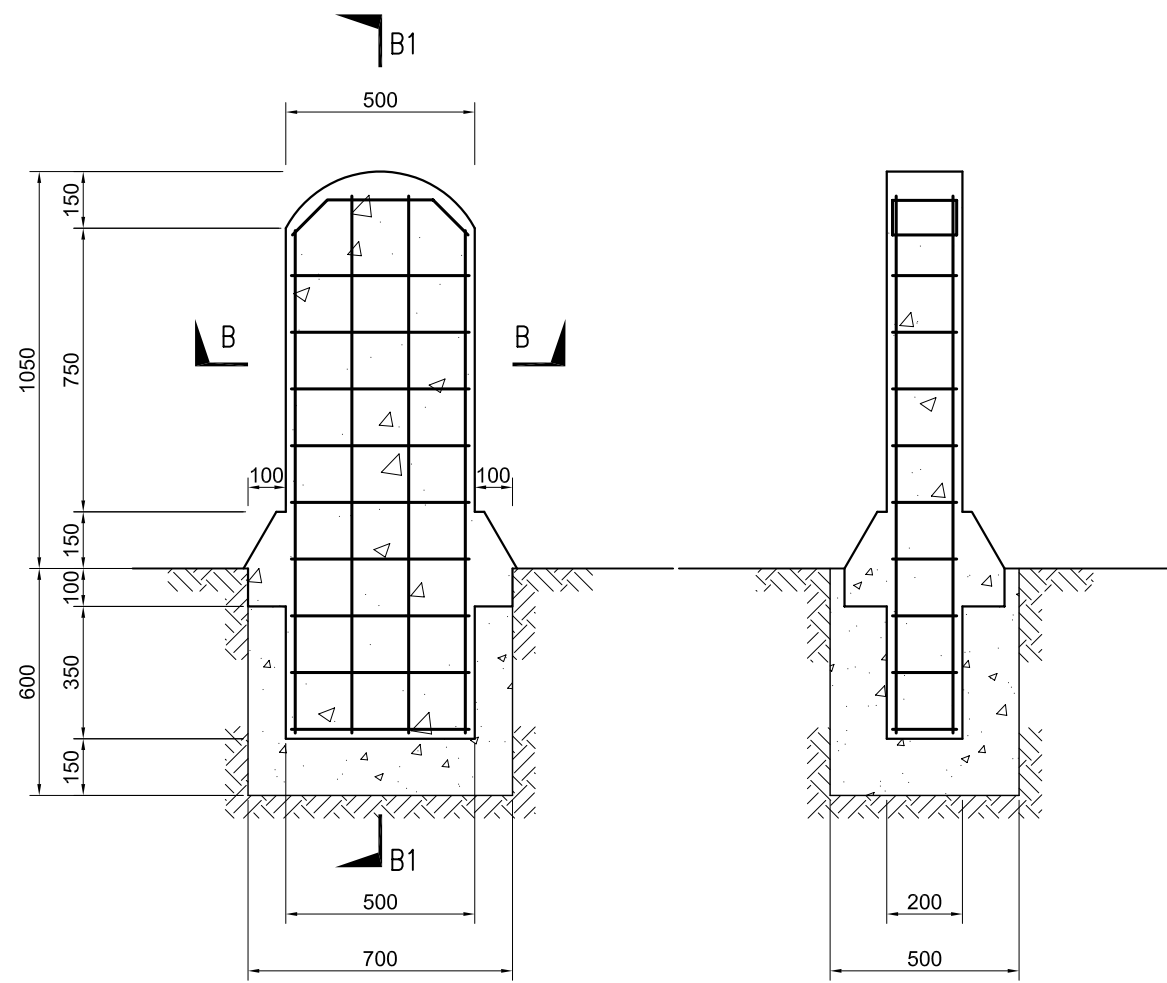


**GUIDE POST**

**NOTES**

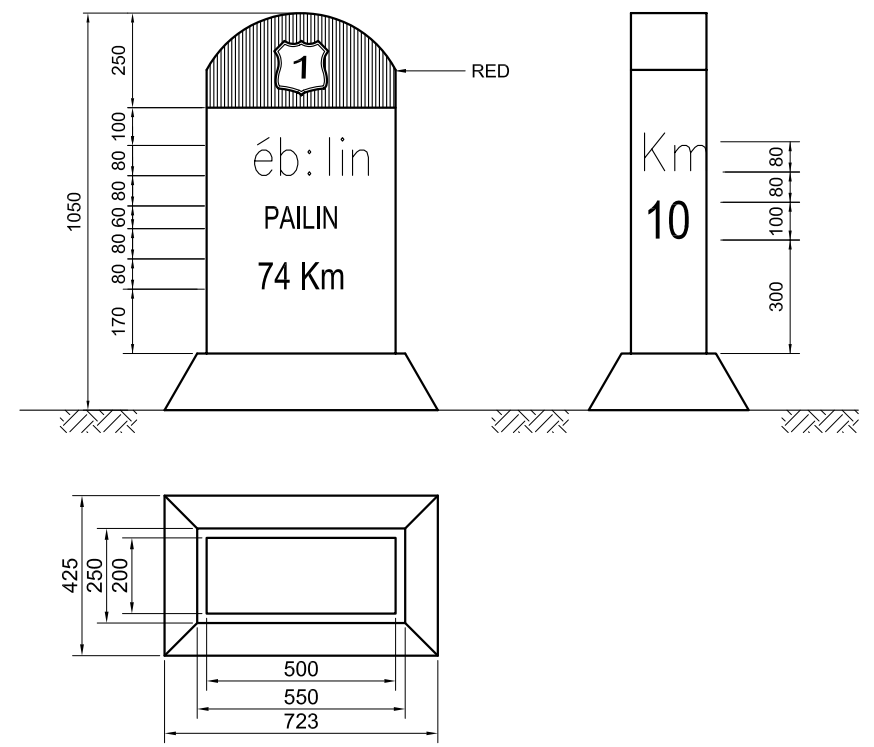
1. ALL DIMENSIONS ARE IN MILLIMETRES UNLESS OTHERWISE INDICATED.
2. DELINEATION POST, GUIDE POST CONCRETE SHALL BE CLASS D. NO POST SHALL BE INSTALLED AND PAINTED UNLESS THE CONCRETE IS 20 DAYS OLD.
3. CONCRETE COVER SHALL BE 20 MM.





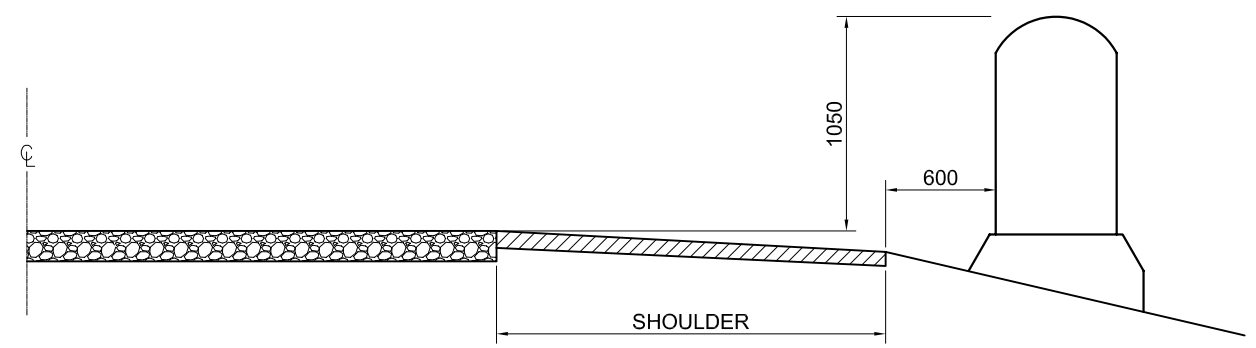
SECTIONAL ELEVATION

SECTION B1 - B1



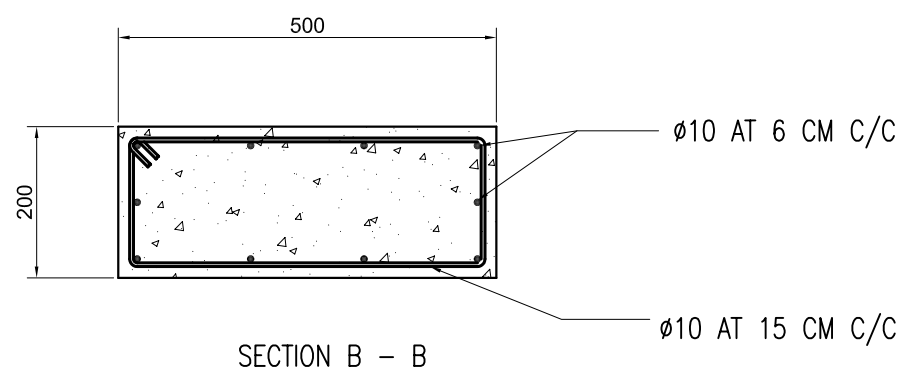
KILOMETER POST PLACEMENT

TYPICAL SECTION

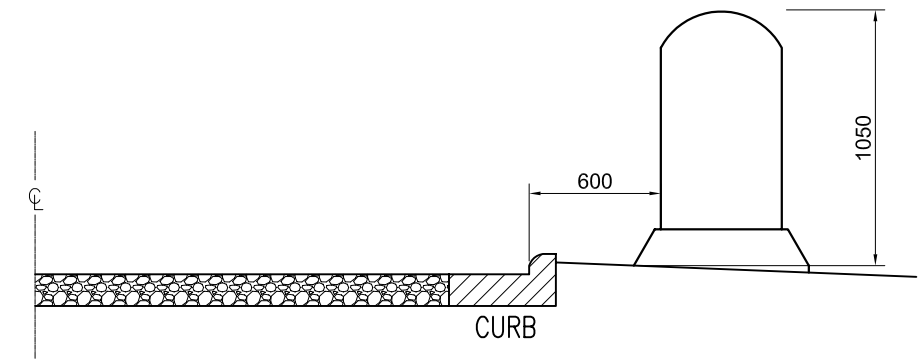


KILOMETER POST PLACEMENT

TYPICAL SECTION



SECTION B - B



KILOMETER POST PLACEMENT

TYPICAL SECTION WITH CURBING

NOTES

1. ALL DIMENSIONS ARE IN MILIMETRES UNLESS OTHERWISE INDICATED.



MINISTRY OF PUBLIC WORKS AND TRANSPORT  
Cnr Norodom Blvd & St 106, Phnom Penh, Kingdom Cambodia  
Tel : (855) 23 426099 - Fax : (855) 23 426098

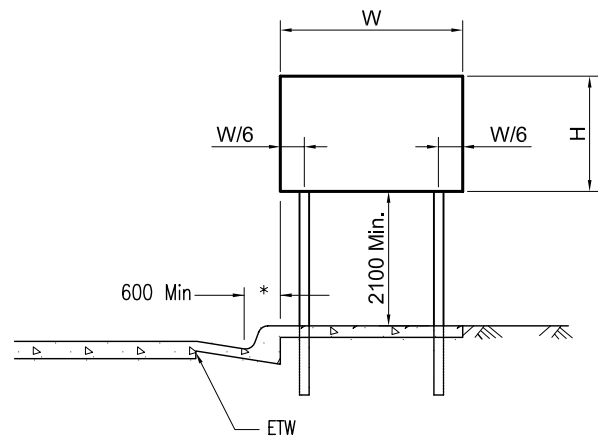
THE STUDY ON THE ROAD NETWORK  
DEVELOPMENT IN THE KINGDOM OF CAMBODIA  
**PRE-FEASIBILITY STUDY ON  
IMPROVEMENT OF NATIONAL ROAD No. 57**

JAPAN INTERNATIONAL COOPERATION AGENCY  
NIPPON KOEI CO., LTD. &  
KATAHIRA & ENGINEERS INTERNATIONAL

TITLE :  
**KILOMETER POST**

SCALE  
AS SHOWN

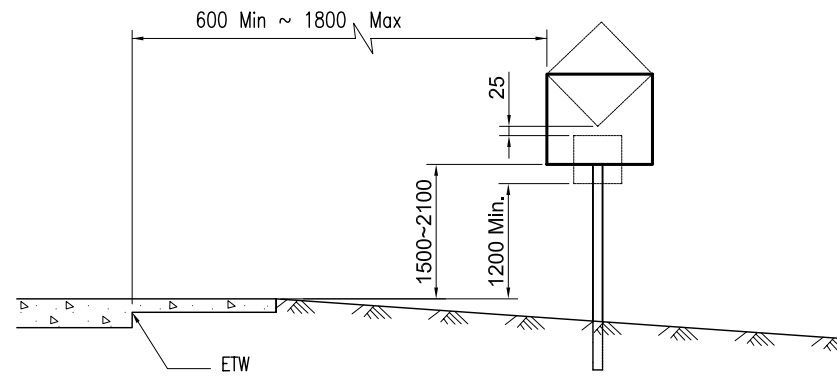
DRAWING No :  
A-55



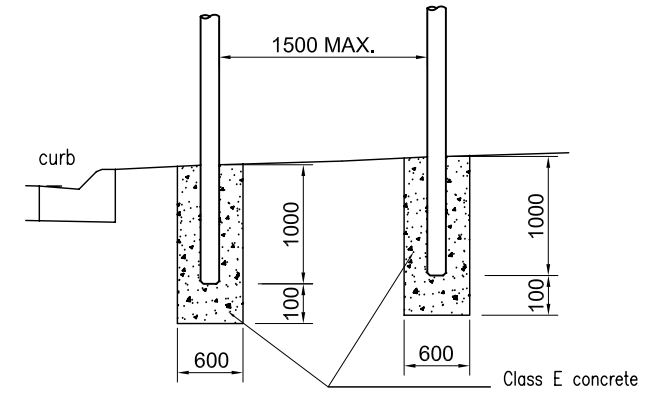
\* 200 to 600 Min. where lateral clearance limited

URBAN LOCATIONS

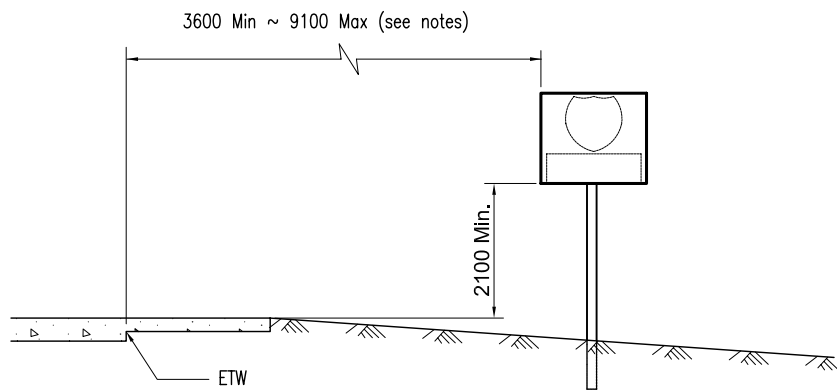
CONVENTIONAL HIGHWAYS AND INTERCHANGE AREAS



RURAL LOCATIONS

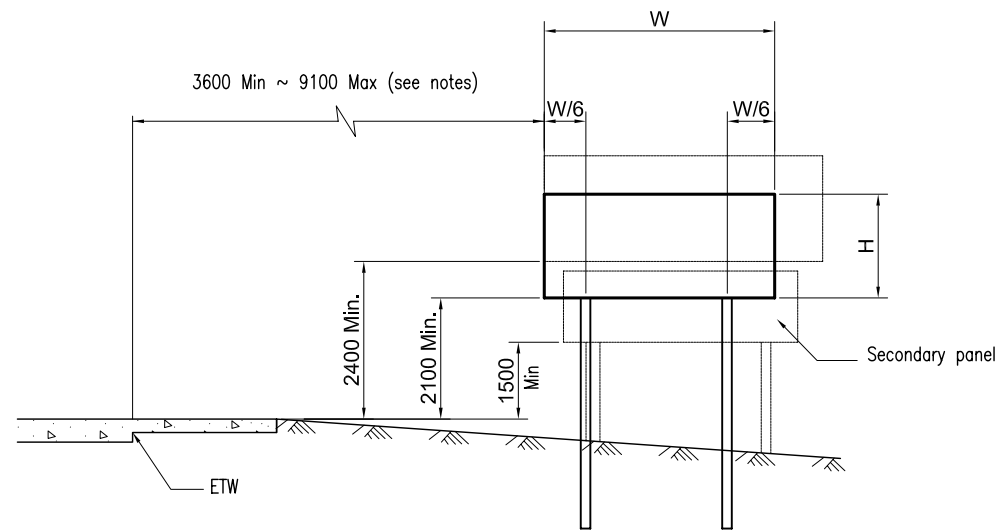


DIRECTION SIGN INSTALLATION DETAIL

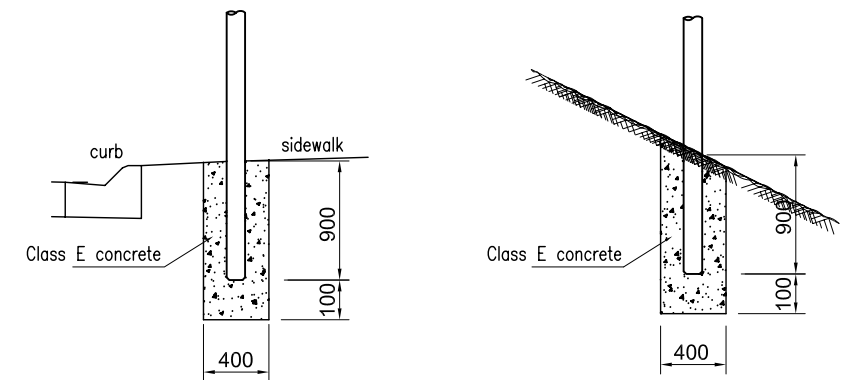


REGULATORY AND WARNING SIGNS  
AND ROUTE SHIELDS

FREEWAY AND EXPRESSWAY LOCATIONS



GUIDE SIGNS



SIGN POST INSTALLATION DETAIL

NOTES

1. ALL DIMENSIONS ARE IN MILLIMETRES UNLESS OTHERWISE INDICATED.
  2. WHEN CLEAR ROADSIDE RECOVERY AREAS ARE PROVIDED, SIGNS SHALL BE PLACED AS FAR FROM THE EDGE OF TRAVELED WAY AS POSSIBLE, UP TO A MAXIMUM OF 9.1M. WHEN POSSIBLE THEY SHALL BE PLACED IN PROTECTED LOCATIONS.
  2. SIGNS IN MEDIANS SHALL BE PLACED AT MIDPOINT OF MEDIAN UP TO A MAXIMUM DISTANCE OF 9.1M FROM EDGE OF TRAVELED WAY. WHEN APPROPRIATE, SIGNS FOR OPPOSING DIRECTIONS SHALL BE PLACED BACK TO BACK.
- ETW = EDGE OF TRAVELED WAY

FOR DETAILS OF SIGN FACES PLEASE REFER TO:  
"ROAD SIGNS SPECIFICATIONS  
PUBLIC WORKS STANDARD PW 03-300-2003"  
REVISED BY THE MINISTRY OF PUBLIC WORKS AND TRANSPORT  
IN MARCH 2003

SIGN SIZES					
URBAN	850	1000 x 865	850	700 x 700	700 x 700
RURAL	1050	1250 x 1080	1050	900 x 900	900 x 900



MINISTRY OF PUBLIC WORKS AND TRANSPORT  
Cnr Norodom Blvd & St 106, Phnom Penh, Kingdom Cambodia  
Tel : (855) 23 426099 - Fax : (855) 23 426098

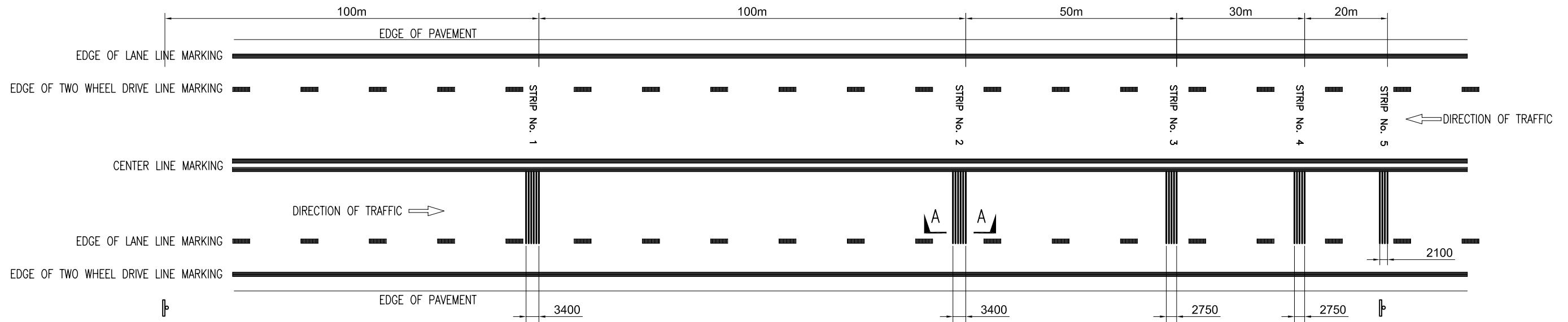
THE STUDY ON THE ROAD NETWORK  
DEVELOPMENT IN THE KINGDOM OF CAMBODIA  
**PRE-FEASIBILITY STUDY ON  
IMPROVEMENT OF NATIONAL ROAD No. 57**

JAPAN INTERNATIONAL COOPERATION AGENCY  
NIPPON KOEI CO., LTD. &  
KATAHIRA & ENGINEERS INTERNATIONAL

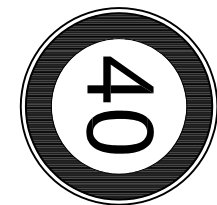
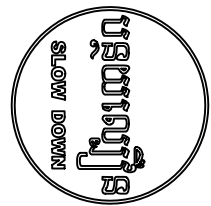
TITLE :  
**ROADSIDE SIGN**

SCALE  
AS SHOWN

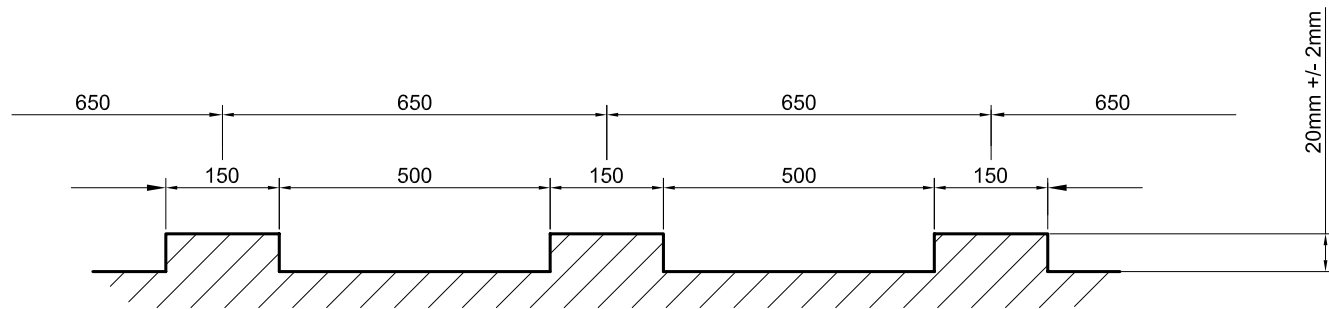
DRAWING No :  
A-56



PLAN VIEW



OR



SECTION A - A

NOTES

1. ALL DIMENSIONS ARE IN METRES UNLESS OTHERWISE SHOWN.
2. FOR DETAILS OF SIGN FACES PLEASE REFER TO:  
"ROAD SIGNS SPECIFICATIONS PUBLIC WORKS STANDARD PW 03-300-2003"  
REVISED BY THE MINISTRY OF PUBLIC WORKS AND TRANSPORT IN MARCH 2003.
3. NUMBER OF BARS:  
- STRIP No. 1 IS 6  
- STRIP No. 2 IS 6  
- STRIP No. 3 IS 5  
- STRIP No. 4 IS 5  
- STRIP No. 5 IS 4
4. RUMBLE STRIPS EXTEND FROM CENTERLINE TO LANE LINE MARKING ONLY.
5. EACH STRIP SURFACE SHOULD BE PAINTED WITH YELLOW THERMOPLASTIC MARKING.



MINISTRY OF PUBLIC WORKS AND TRANSPORT  
Cnr Norodom Blvd & St 106, Phnom Penh, Kingdom Cambodia  
Tel : (855) 23 426099 - Fax : (855) 23 426098

THE STUDY ON THE ROAD NETWORK  
DEVELOPMENT IN THE KINGDOM OF CAMBODIA  
**PRE-FEASIBILITY STUDY ON  
IMPROVEMENT OF NATIONAL ROAD No. 57**

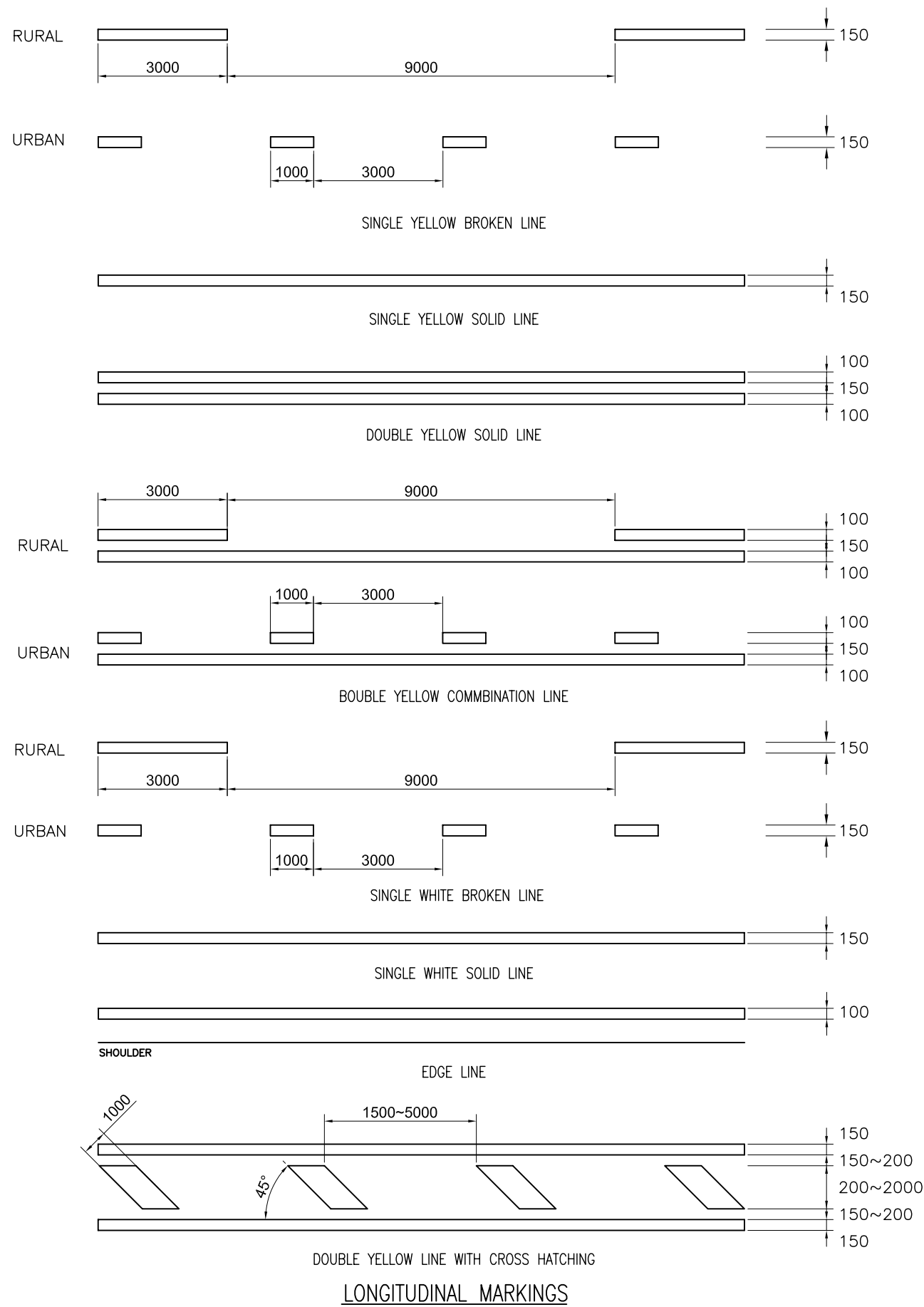
JAPAN INTERNATIONAL COOPERATION AGENCY  
NIPPON KOEI CO., LTD. &  
KATAHIRA & ENGINEERS INTERNATIONAL

TITLE :

**RUMBLE STRIPS**

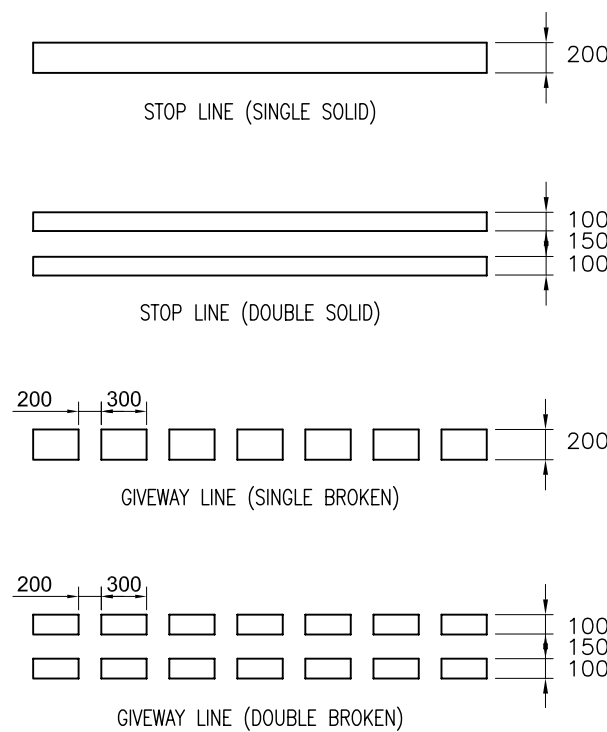
SCALE  
AS SHOWN

DRAWING No :  
A-57



**ROAD STUD INSTALLATION**

TYPE OF LINE	COLOUR OF REFLECTOR	SPACING OF ROAD STUD (M)		LOCATION
		RURAL	URBAN	
CENTRE LINE SINGLE BROKEN LINE	YELLOW	24.00	12.00	BETWEEN BROKEN LINE
SINGLE SOLID LINE	YELLOW	12.00	4.00	ON SOLID LINE
DOUBLE SOLID LINE	YELLOW	12.00	4.00	BETWEEN DOUBLE SOLID LINES
LANE LINE BROKEN LINE	YELLOW	24.00	12.00	BETWEEN BROKEN LINE
SINGLE LINE	YELLOW	24.00	12.00	ON SOLID LINE



**NOTES**

1. ALL DIMENSIONS ARE IN METRES UNLESS OTHERWISE SHOWN.
2. ALL ROAD STUDS TO BE REFLECTING TYPE.

