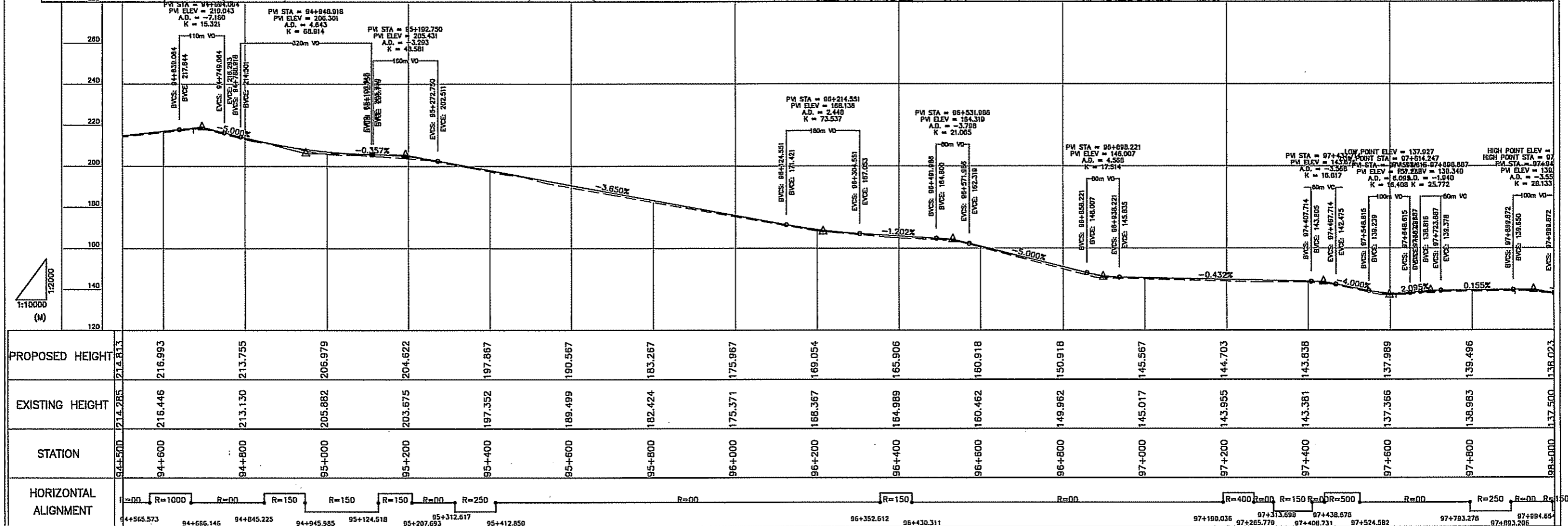
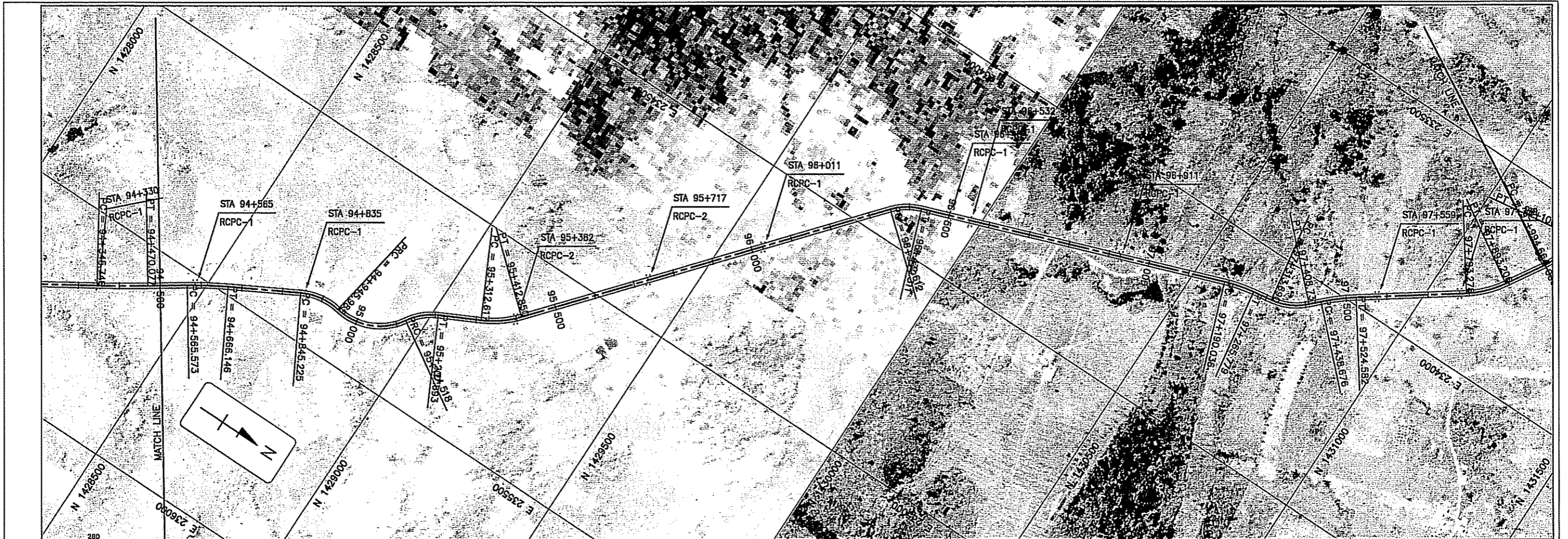
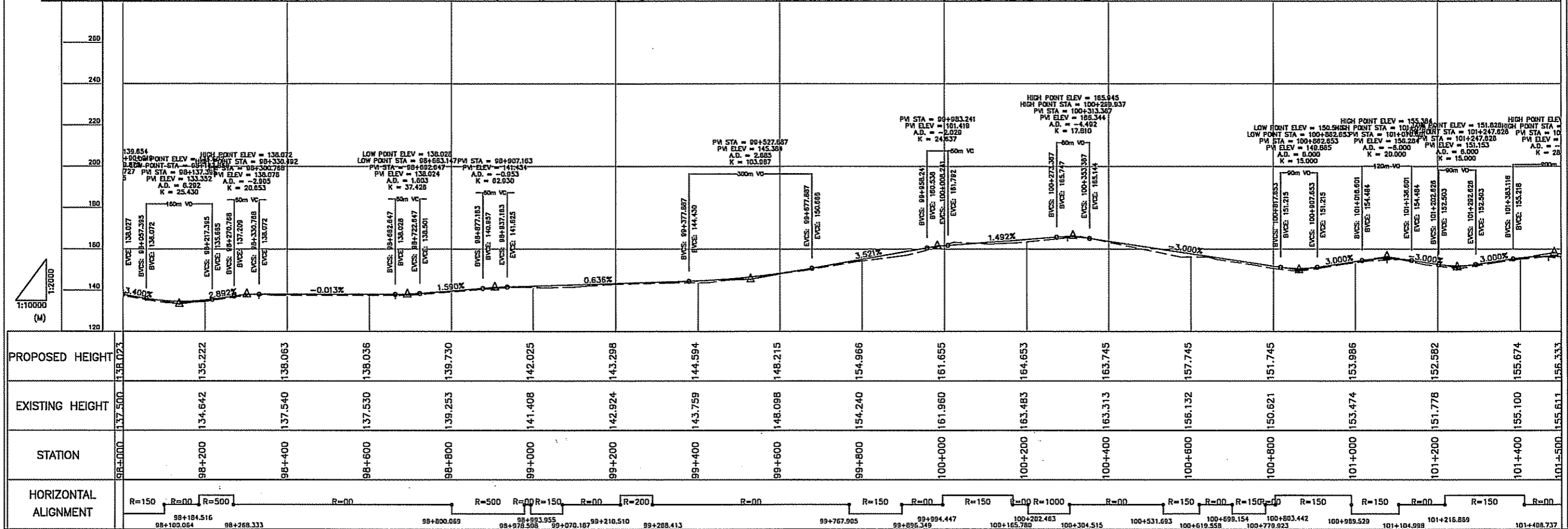
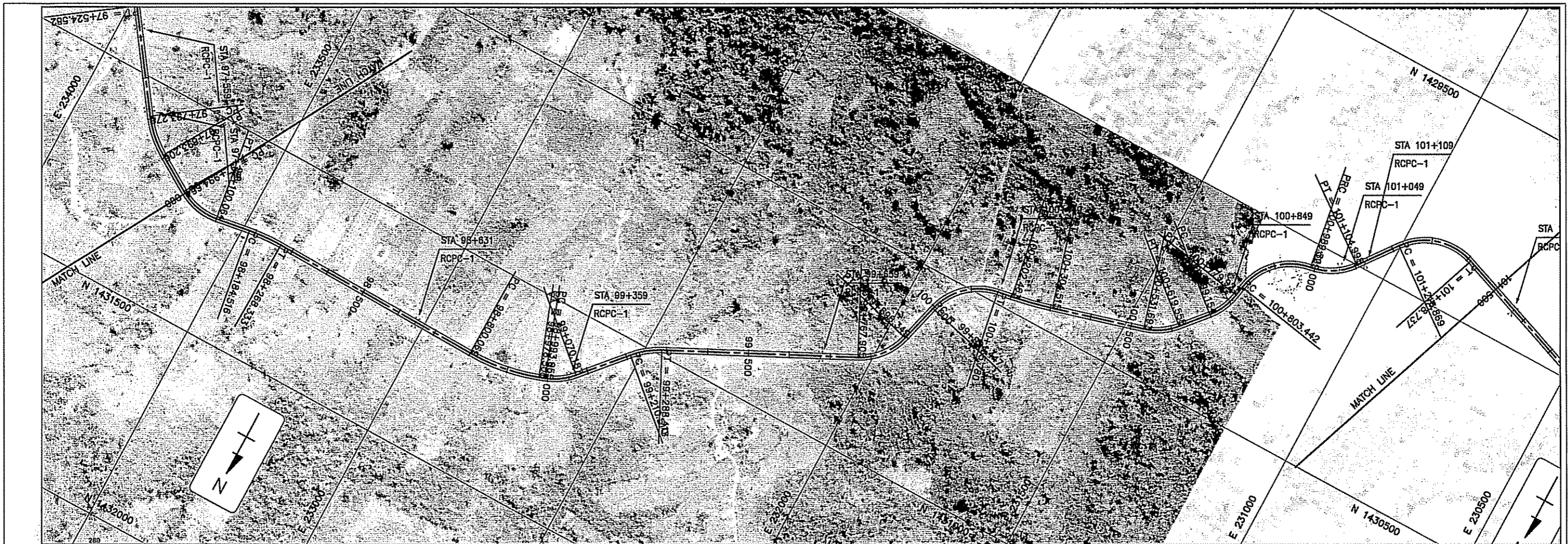


PROPOSED HEIGHT	EXISTING HEIGHT	STATION	HORIZONTAL ALIGNMENT
159.407	158.922	91+000	R=0
157.853	157.117	91+200	R=1000
160.221	159.715	91+400	R=0
159.770	159.023	91+600	R=150
167.831	167.073	91+800	R=0
177.016	176.235	92+000	R=400
182.663	182.253	92+200	R=0
188.916	188.423	92+400	R=200
189.234	188.749	92+600	R=0
184.047	183.540	92+800	R=1500
180.250	179.721	93+000	R=400
181.369	180.780	93+200	R=0
185.561	184.778	93+400	R=300
192.760	192.166	93+600	R=200
198.366	197.303	93+800	R=0
203.379	202.943	94+000	R=250
208.274	207.801	94+200	R=0
212.634	212.124	94+400	R=300
214.813	214.285	94+500	R=0





PROPOSED HEIGHT	138.023	135.222	138.063	138.036	139.730	142.025	143.298	144.594	148.215	154.966	161.655	164.653	163.745	157.745	151.745	153.986	152.582	155.674	155.333	
EXISTING HEIGHT	137.500	134.642	137.540	137.530	139.253	141.408	142.924	143.759	148.098	154.240	161.980	163.483	163.313	156.132	150.621	153.474	151.778	155.100	155.611	
STATION	98+000	98+200	98+400	98+600	98+800	99+000	99+200	99+400	99+600	99+800	100+000	100+200	100+400	100+600	100+800	101+000	101+200	101+400	101+500	
HORIZONTAL ALIGNMENT	R=150 R=00 R=500 R=00 R=500 R=00 R=150 R=00 R=200 R=00 R=150 R=00 R=150 R=00 R=1000 R=00 R=150 R=00 R=150 R=00 R=150 R=00 R=150 R=00																			



MINISTRY OF PUBLIC WORKS AND TRANSPORT  
 Cnr Norodom Blvd & St 106, Phnom Penh, Kingdom Cambodia  
 Tel : (855) 23 426099 - Fax : (855) 23 426098

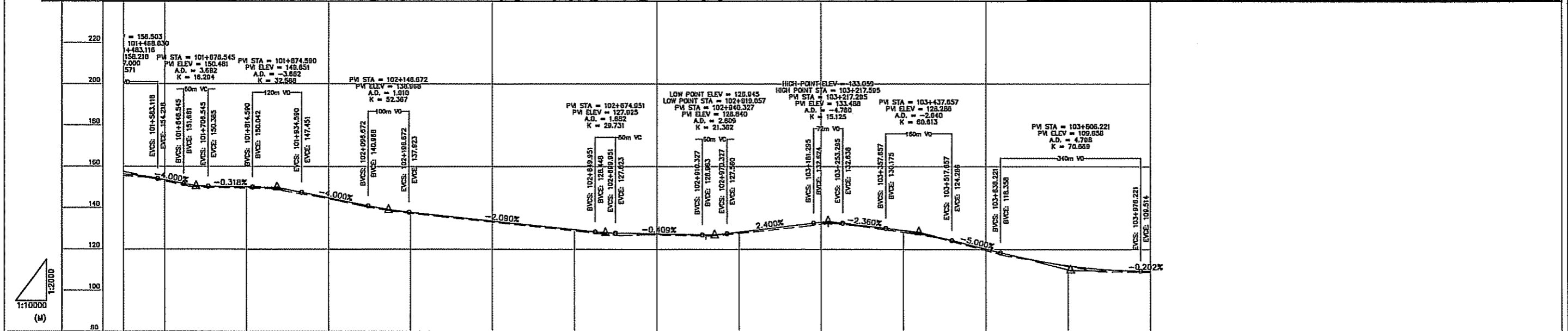
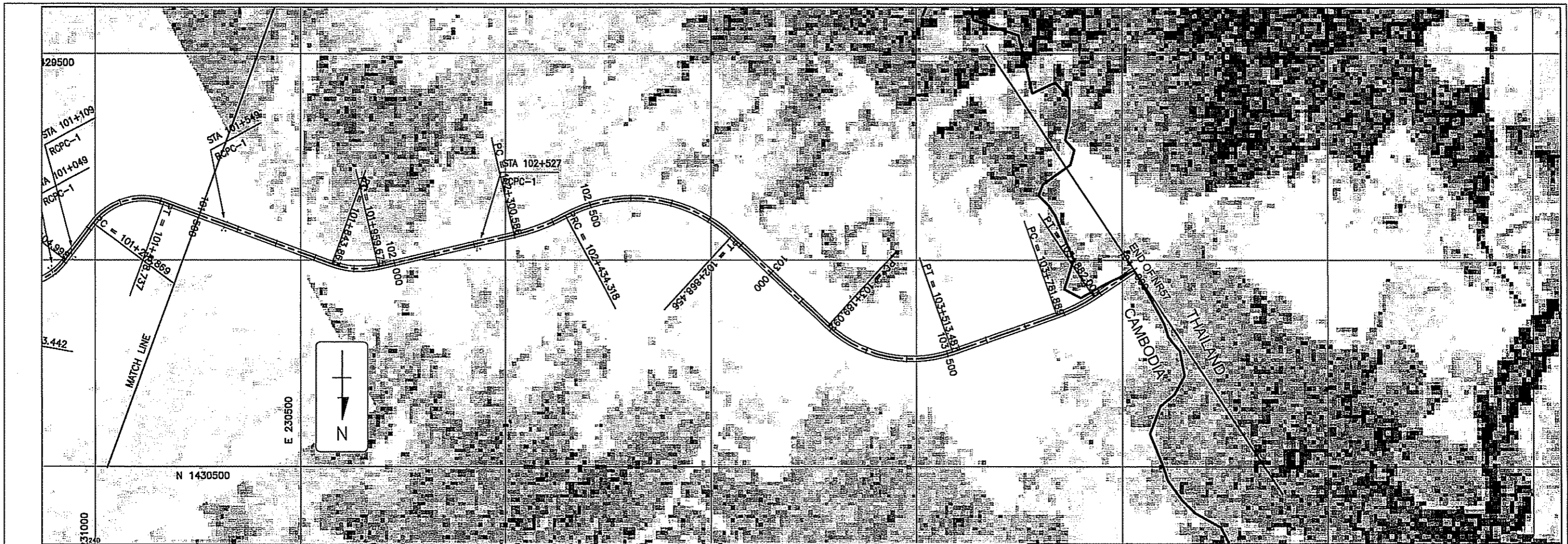
THE STUDY ON THE ROAD NETWORK  
 DEVELOPMENT IN THE KINGDOM OF CAMBODIA  
 PRE-FEASIBILITY STUDY ON  
 IMPROVEMENT OF NATIONAL ROAD NO.57

JAPAN INTERNATIONAL COOPERATION AGENCY  
 NIPPON KOEI CO., LTD. &  
 KATAHIRA & ENGINEERS INTERNATIONAL

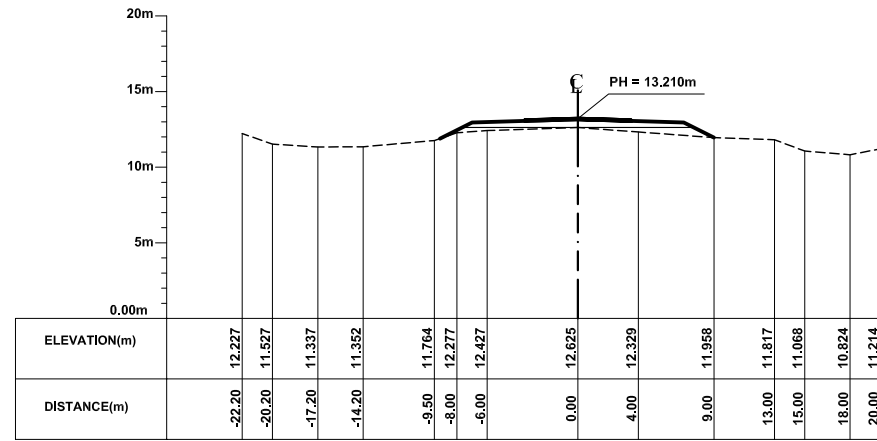
TITLE:  
 PLAN AND PROFILE

SCALE  
 H 1:10,000  
 V 1:2,000

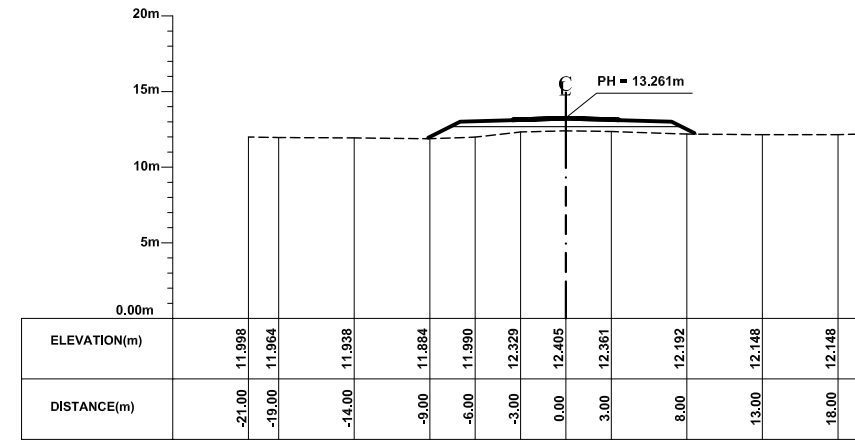
DRAWING No :  
 A-33



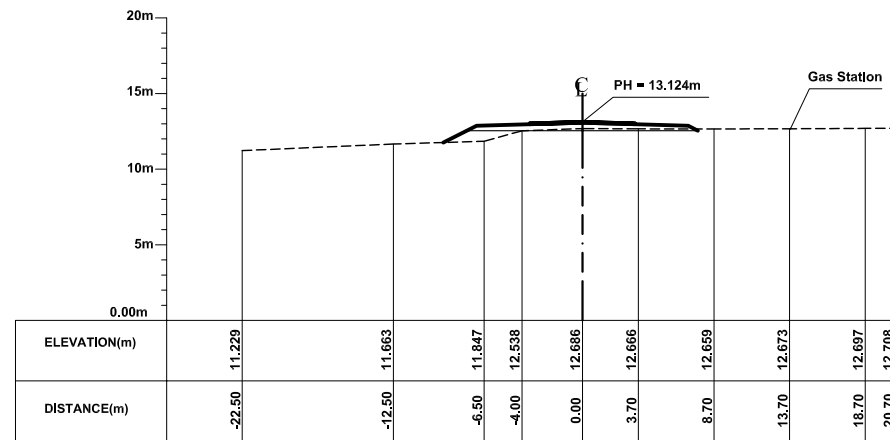
PROPOSED HEIGHT	156.333	153.542	150.088	144.835	137.853	133.673	129.492	127.414	128.273	132.957	129.027	120.169	112.062	109.466
EXISTING HEIGHT	155.611	153.033	149.518	144.390	137.432	133.161	128.953	127.000	127.727	132.228	128.299	119.496	111.787	108.966
STATION	101+500	101+600	101+800	102+000	102+200	102+400	102+600	102+800	103+000	103+200	103+400	103+600	103+800	104+000
HORIZONTAL ALIGNMENT	R=00		R=200		R=00		R=500		R=350		R=00		R=400	
	101+843.863		101+959.675		102+300.586		102+434.318		102+888.456		103+189.092		103+513.487	



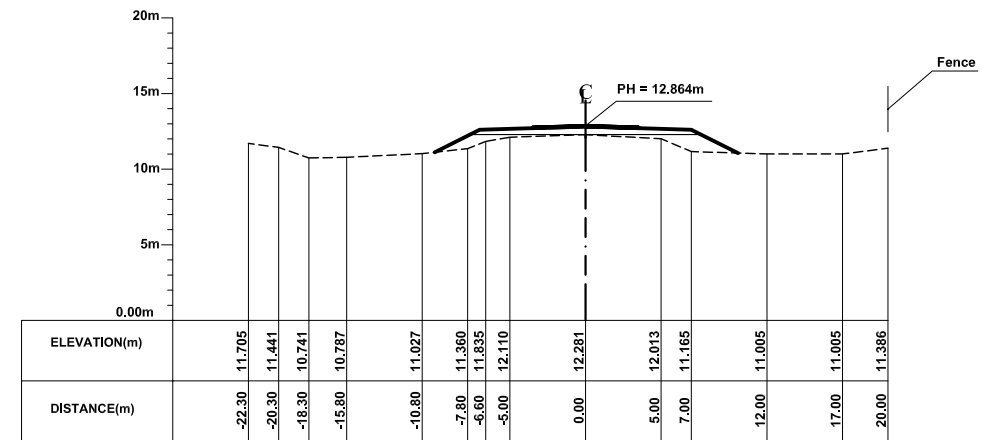
STA 6+979.8



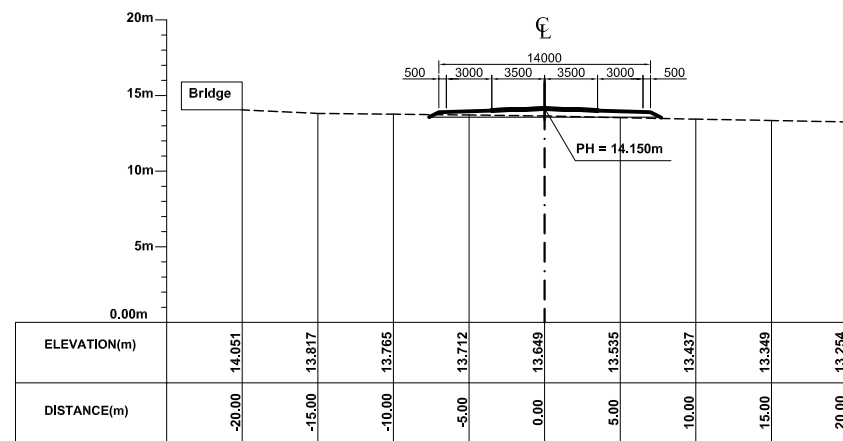
STA 17+620.2



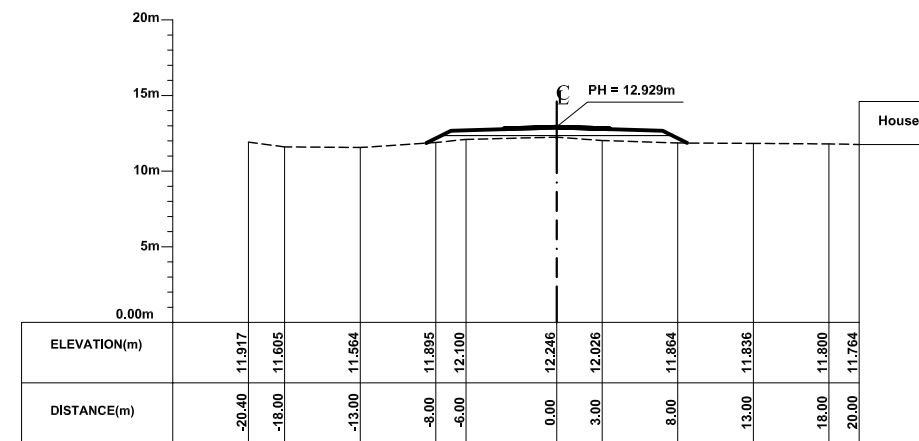
STA 3+481



STA 13+988.6

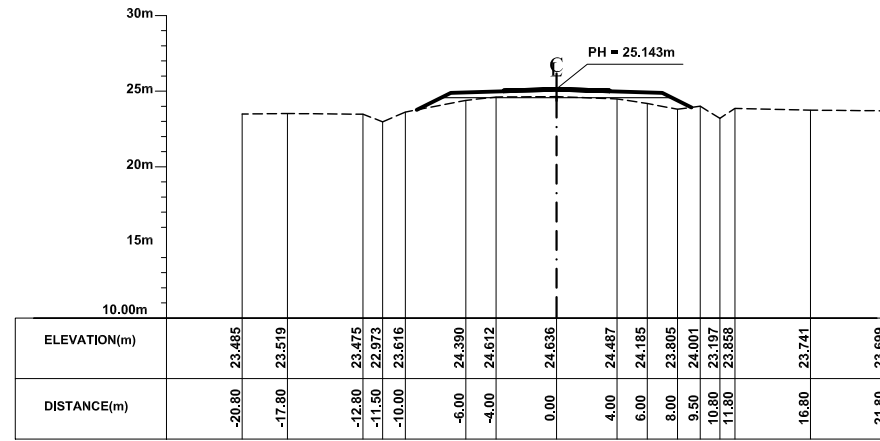


STA 0+000

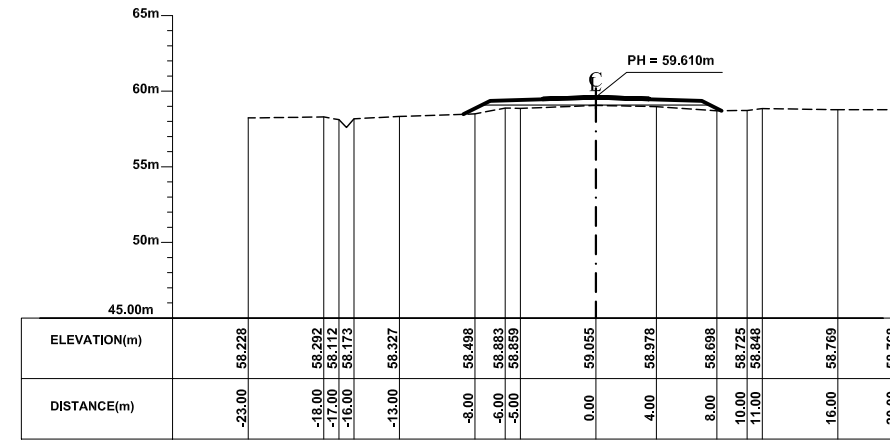


STA 10+492.6

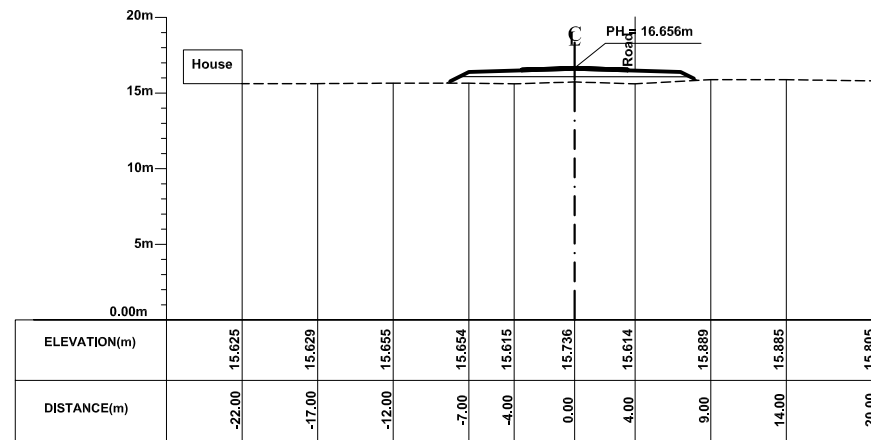




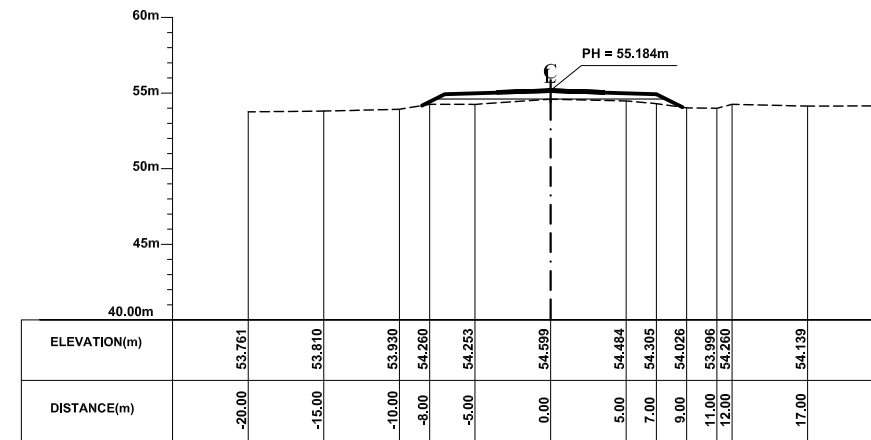
STA 28+108.2



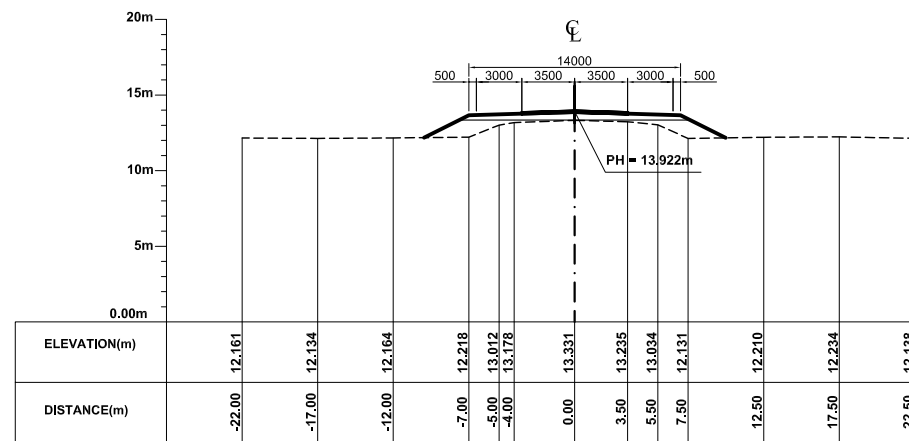
STA 38+502.8



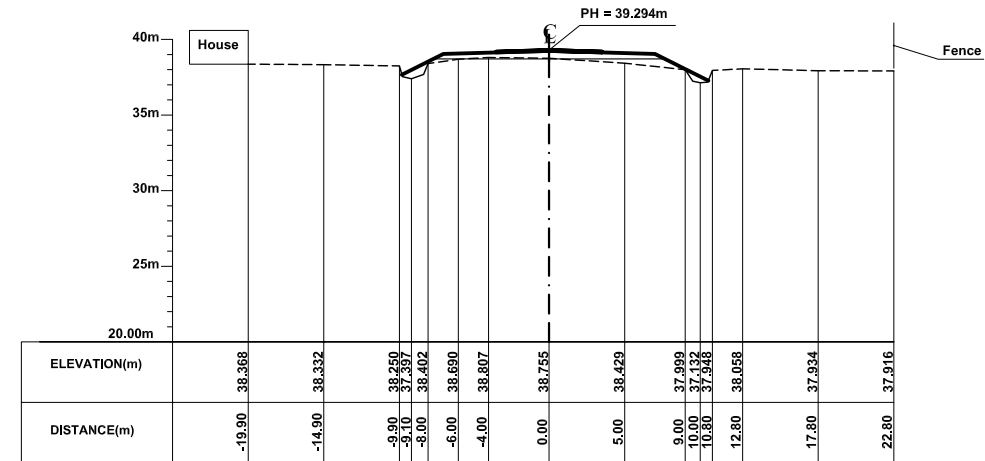
STA 24+690.2



STA 35+138.8

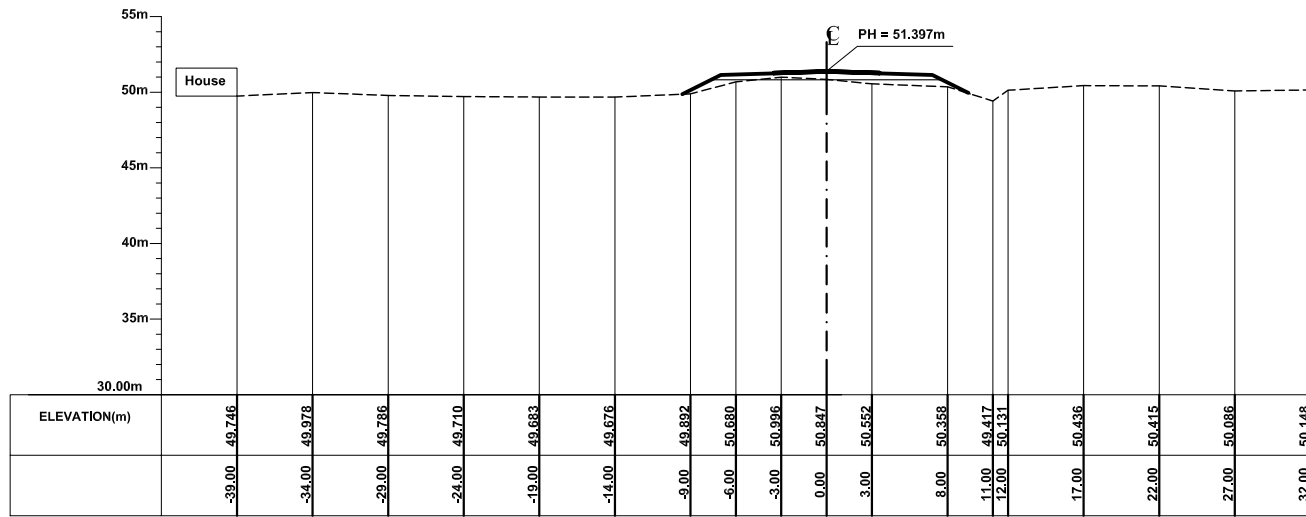


STA 21+112.2

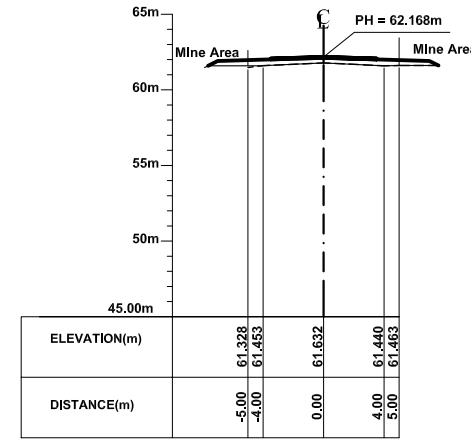


STA 31+614.2

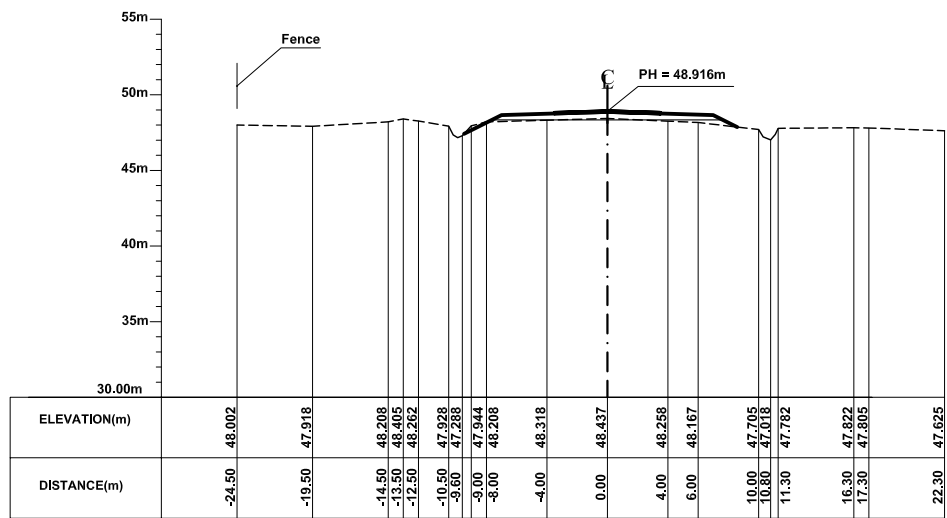




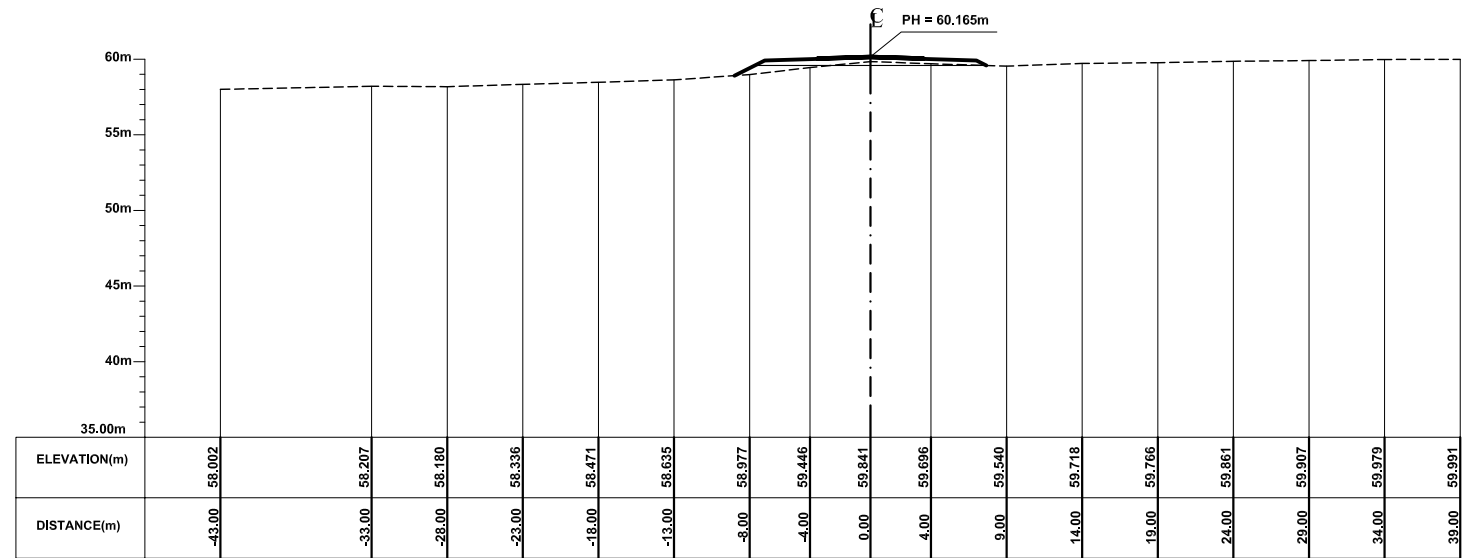
STA 47+007



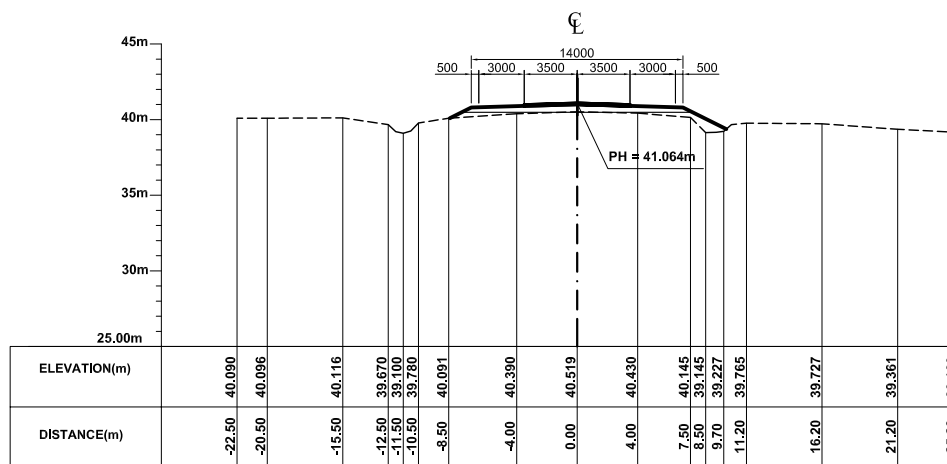
STA 52+402



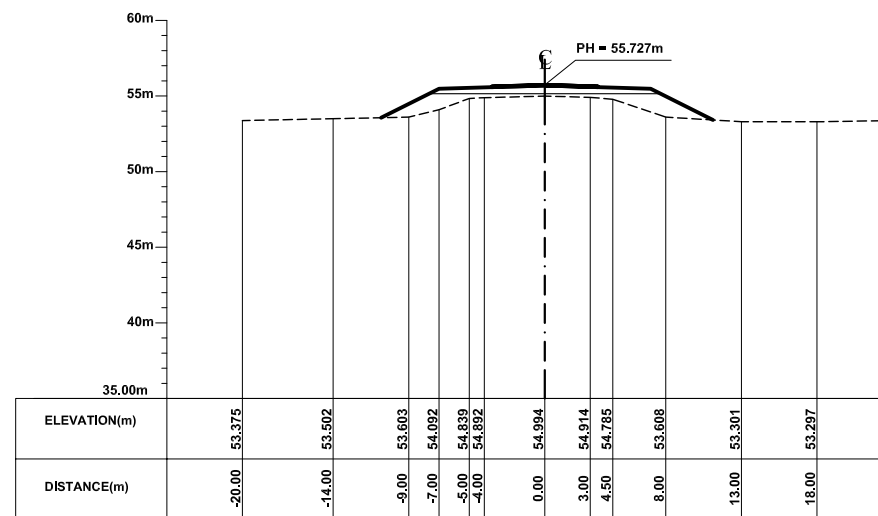
STA 45+453



STA 51+646.8



STA 41+963



STA 48+935.8



MINISTRY OF PUBLIC WORKS AND TRANSPORT  
 Cnr Norodom Blvd & St 106, Phnom Penh, Kingdom Cambodia  
 Tel : (855) 23 426099 - Fax : (855) 23 426098

THE STUDY ON THE ROAD NETWORK  
 DEVELOPMENT IN THE KINGDOM OF CAMBODIA  
**PRE-FEASIBILITY STUDY ON  
 IMPROVEMENT OF NATIONAL ROAD NO.57**

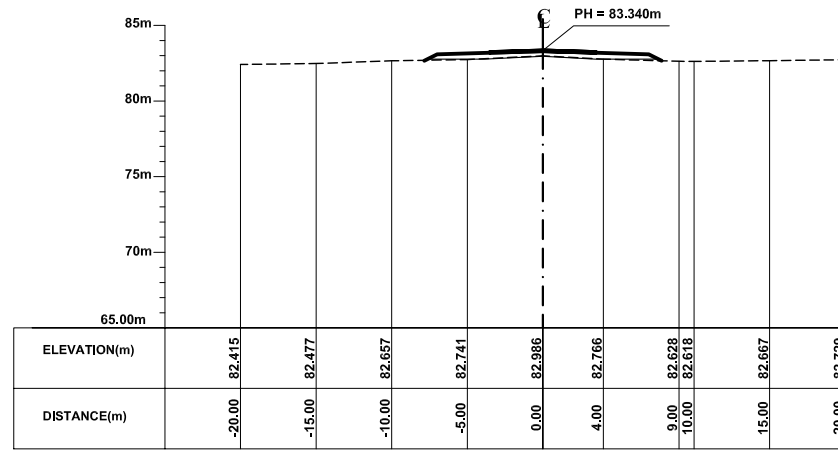
JAPAN INTERNATIONAL COOPERATION AGENCY  
 NIPPON KOEI CO., LTD. &  
 KATAHIRA & ENGINEERS INTERNATIONAL

TITLE :

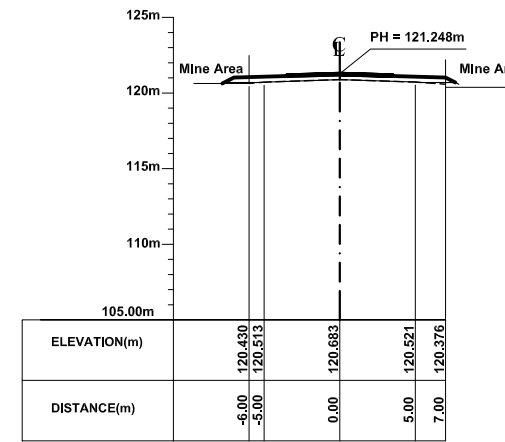
**CROSS SECTION**

SCALE  
 1:500

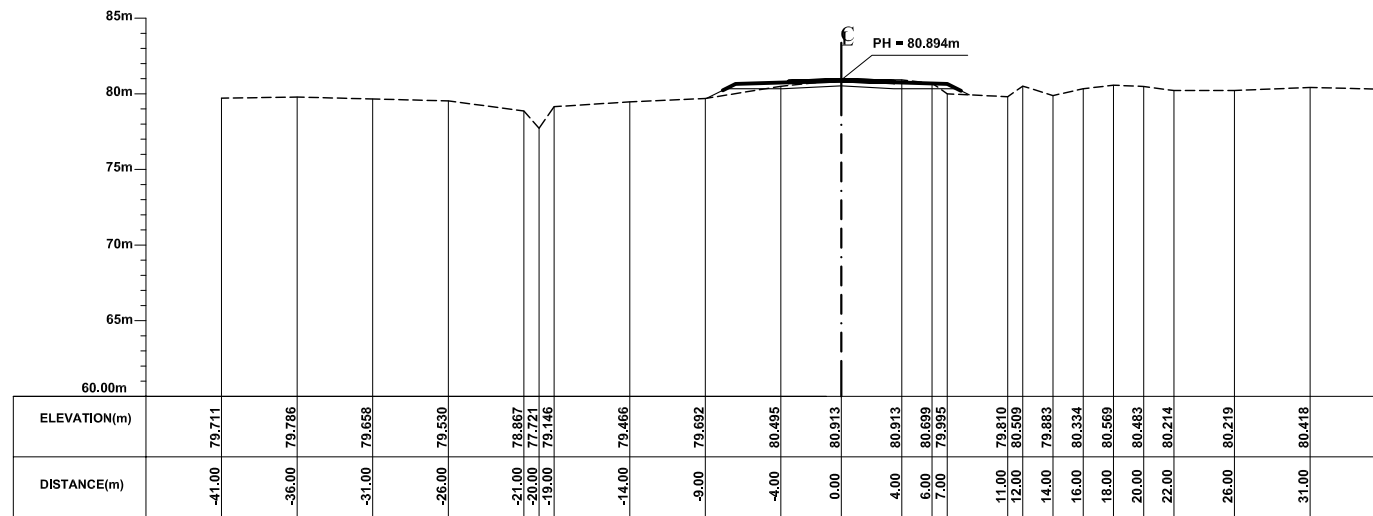
DRAWING No :  
 A-37



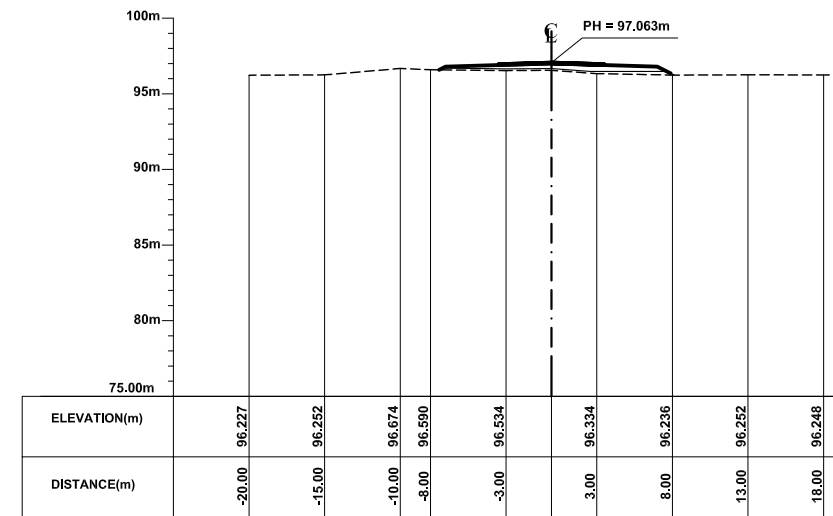
STA 59+492



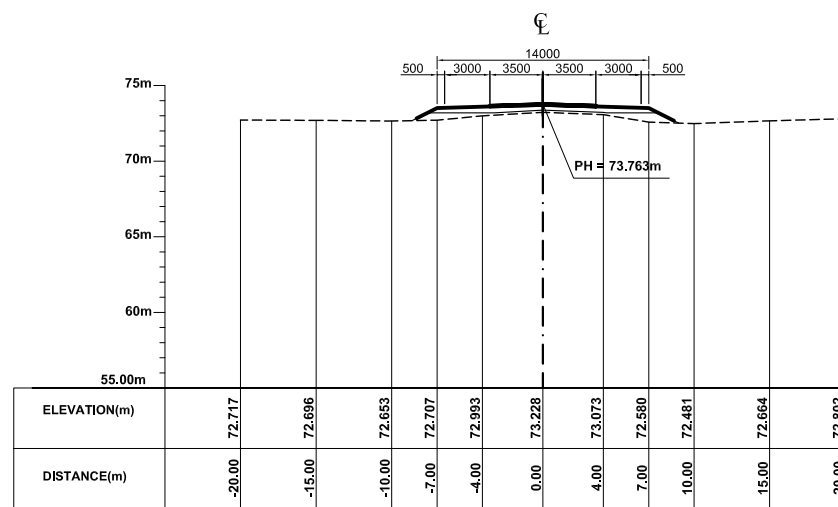
STA 66+765



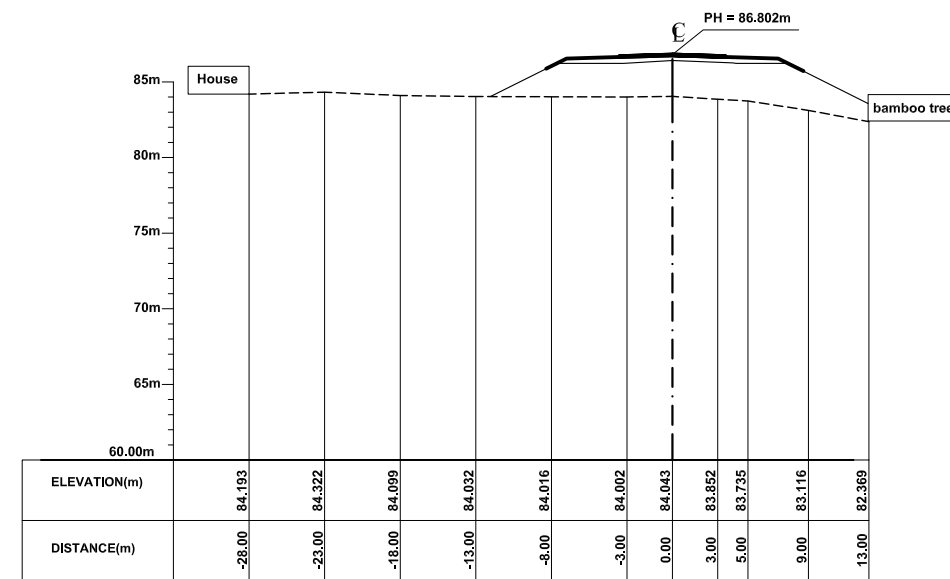
STA 58+488



STA 62+975



STA 56+032



STA 60+016

