

PROPOSED HEIGHT	EXISTING HEIGHT	STATION	HORIZONTAL ALIGNMENT
120.855	120.190	66+500	R=00
121.003	120.366	66+600	R=00
121.300	120.743	66+800	R=500
121.636	121.353	67+000	R=00
122.457	121.949	67+200	R=250
123.668	123.114	67+400	R=00
124.886	124.451	67+600	R=400
126.021	125.619	67+800	R=00
123.751	123.240	68+000	R=380
123.375	122.986	68+200	R=00
125.145	124.578	68+400	R=400
128.233	127.763	68+600	R=00
130.568	130.059	68+800	R=00
132.238	131.752	69+000	R=00
133.909	133.446	69+200	R=00
135.579	135.066	69+400	R=00
137.250	136.642	69+600	R=250
138.920	138.144	69+800	R=00
140.588	140.053	70+000	R=00



MINISTRY OF PUBLIC WORKS AND TRANSPORT
 Cnr Norodom Blvd & St 106, Phnom Penh, Kingdom Cambodia
 Tel : (855) 23 426099 - Fax : (855) 23 426098

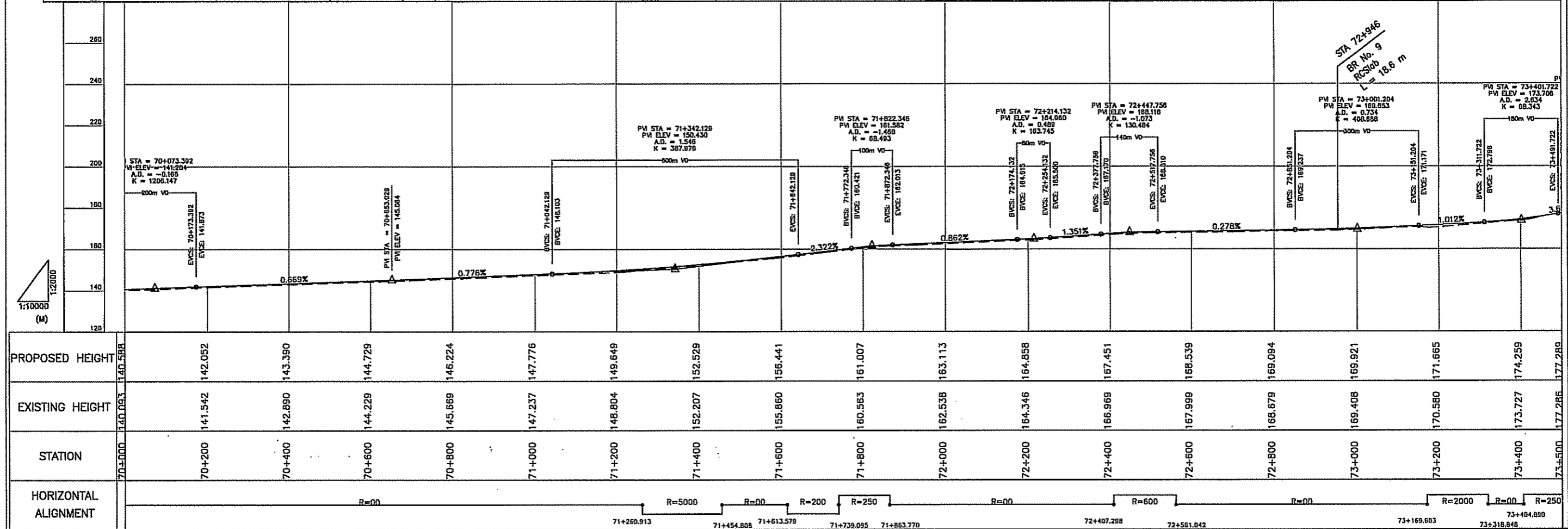
THE STUDY ON THE ROAD NETWORK
 DEVELOPMENT IN THE KINGDOM OF CAMBODIA
 PRE-FEASIBILITY STUDY ON
 IMPROVEMENT OF NATIONAL ROAD NO.57

JAPAN INTERNATIONAL COOPERATION AGENCY
 NIPPON KOEI CO., LTD. &
 KATAHIRA & ENGINEERS INTERNATIONAL

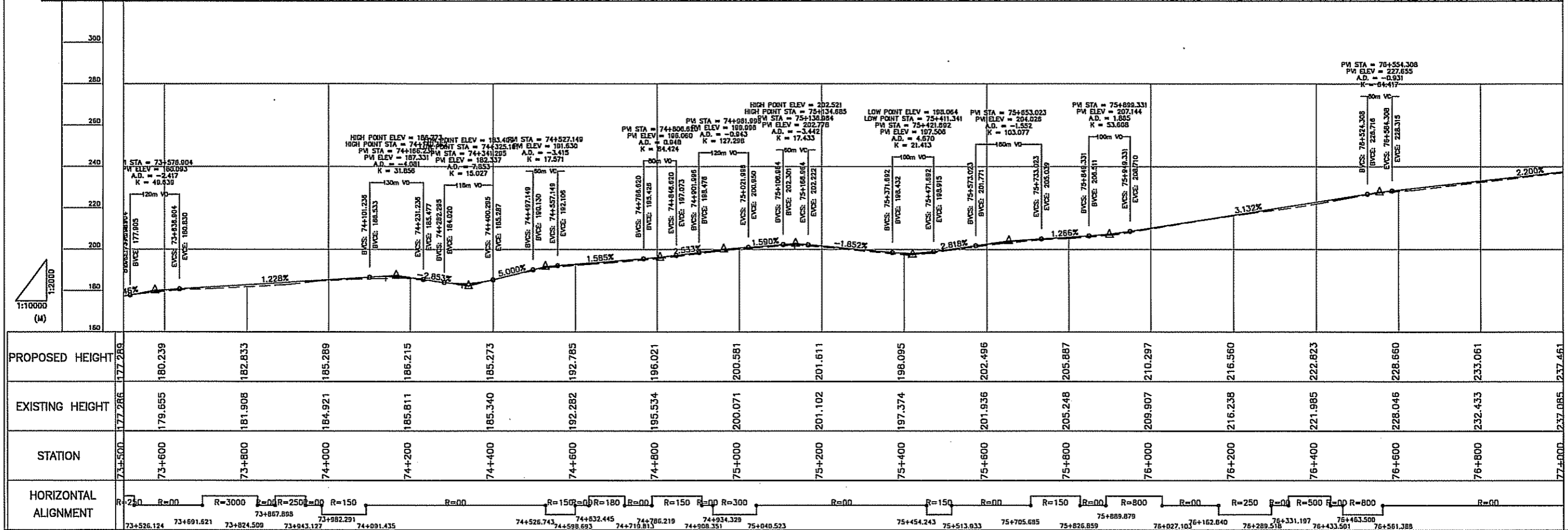
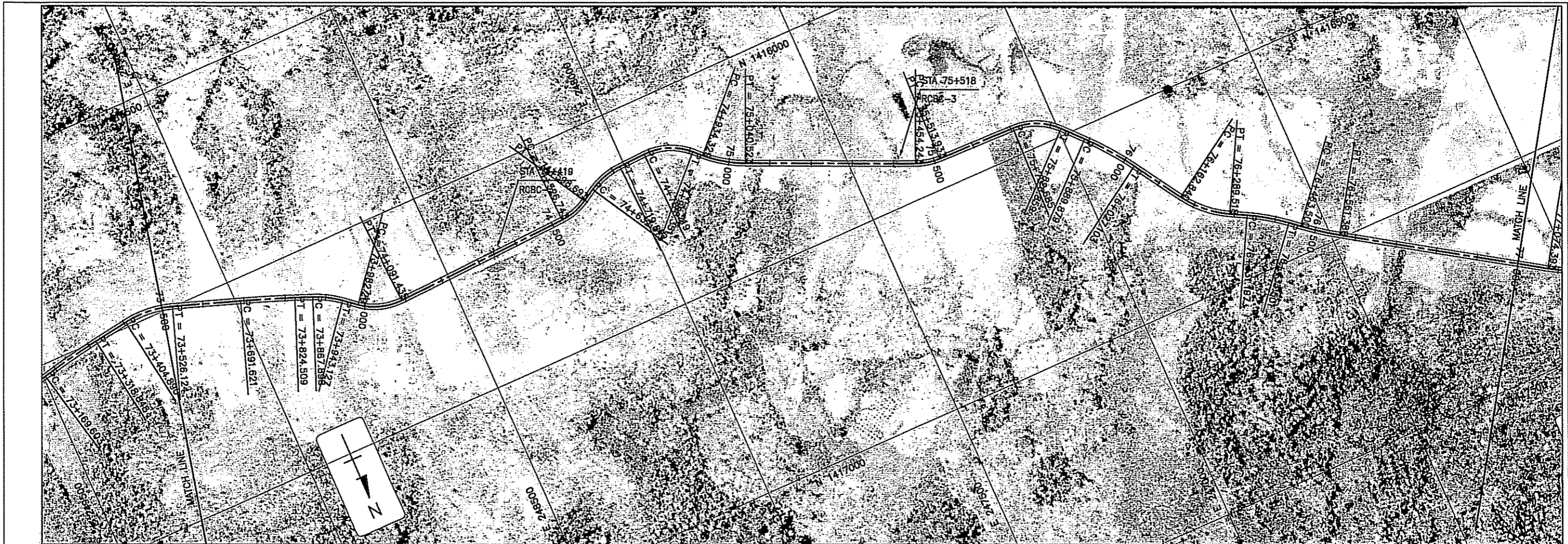
TITLE:
 PLAN AND PROFILE

SCALE
 H 1:10,000
 V 1:2,000

DRAWING No :
 A-24



PROPOSED HEIGHT	140.588	142.052	143.390	144.729	146.224	147.776	149.649	152.529	156.441	161.007	163.113	164.858	167.451	168.539	169.094	169.921	171.665	174.259	177.289
EXISTING HEIGHT	140.093	141.542	142.890	144.229	145.669	147.237	148.804	152.207	155.860	160.563	162.538	164.346	166.969	167.999	168.679	169.408	170.580	173.727	177.286
STATION	70+000	70+200	70+400	70+600	70+800	71+000	71+200	71+400	71+600	71+800	72+000	72+200	72+400	72+600	72+800	73+000	73+200	73+400	73+500
HORIZONTAL ALIGNMENT	<p style="text-align: center;"> R=00 R=5000 R=00 R=200 R=250 R=00 R=600 R=00 R=2000 R=00 R=250 </p> <p style="text-align: center;"> 71+260.913 71+454.808 71+613.578 71+739.095 71+863.770 72+407.288 72+581.042 73+169.603 73+404.890 </p>																		



PROPOSED HEIGHT	EXISTING HEIGHT	STATION	HORIZONTAL ALIGNMENT
177.289	177.286	73+500	R=250
180.239	179.655	73+600	R=00
182.833	181.908	73+800	R=3000
185.289	184.921	74+000	R=00
186.215	185.811	74+200	R=2500
185.273	185.340	74+400	R=00
192.785	192.282	74+600	R=150
196.021	195.534	74+800	R=00
200.581	200.071	75+000	R=150
201.611	201.102	75+200	R=00
198.095	197.374	75+400	R=150
202.496	201.936	75+600	R=00
205.887	205.248	75+800	R=150
210.297	209.907	76+000	R=00
216.560	216.238	76+200	R=800
222.823	221.985	76+400	R=00
228.660	228.046	76+600	R=250
233.061	232.433	76+800	R=00
237.461	237.085	77+000	R=500



MINISTRY OF PUBLIC WORKS AND TRANSPORT
 Car Norodom Blvd & St 106, Phnom Penh, Kingdom Cambodia
 Tel: (855) 23 426099 - Fax: (855) 23 426098

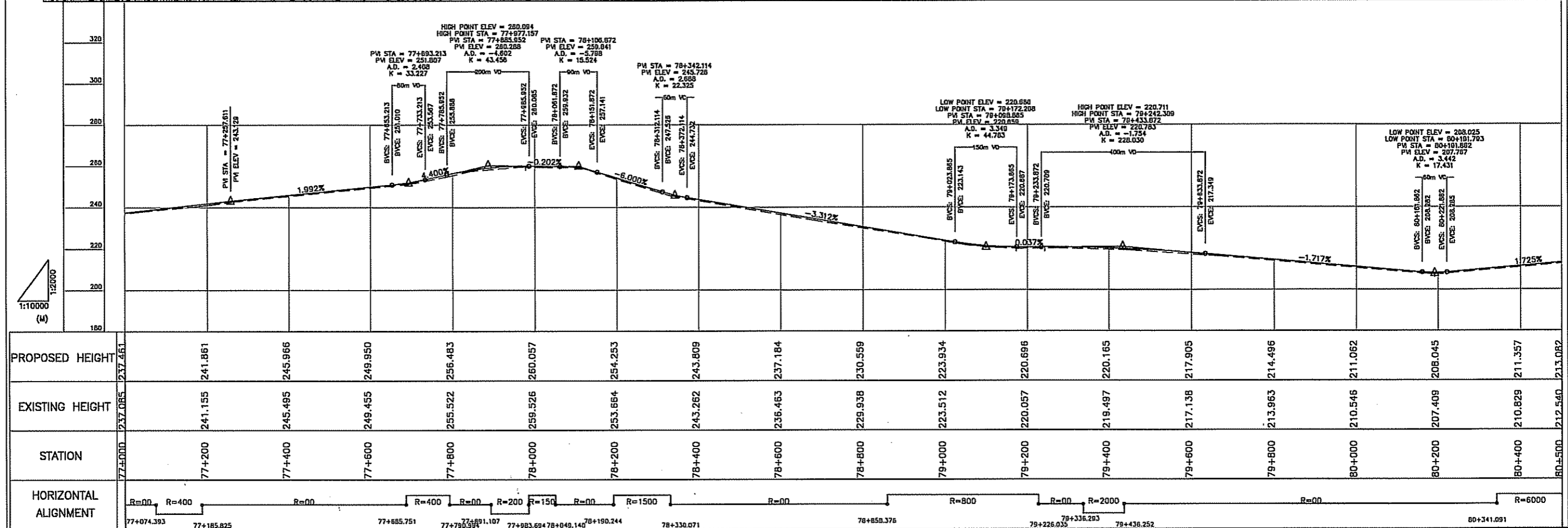
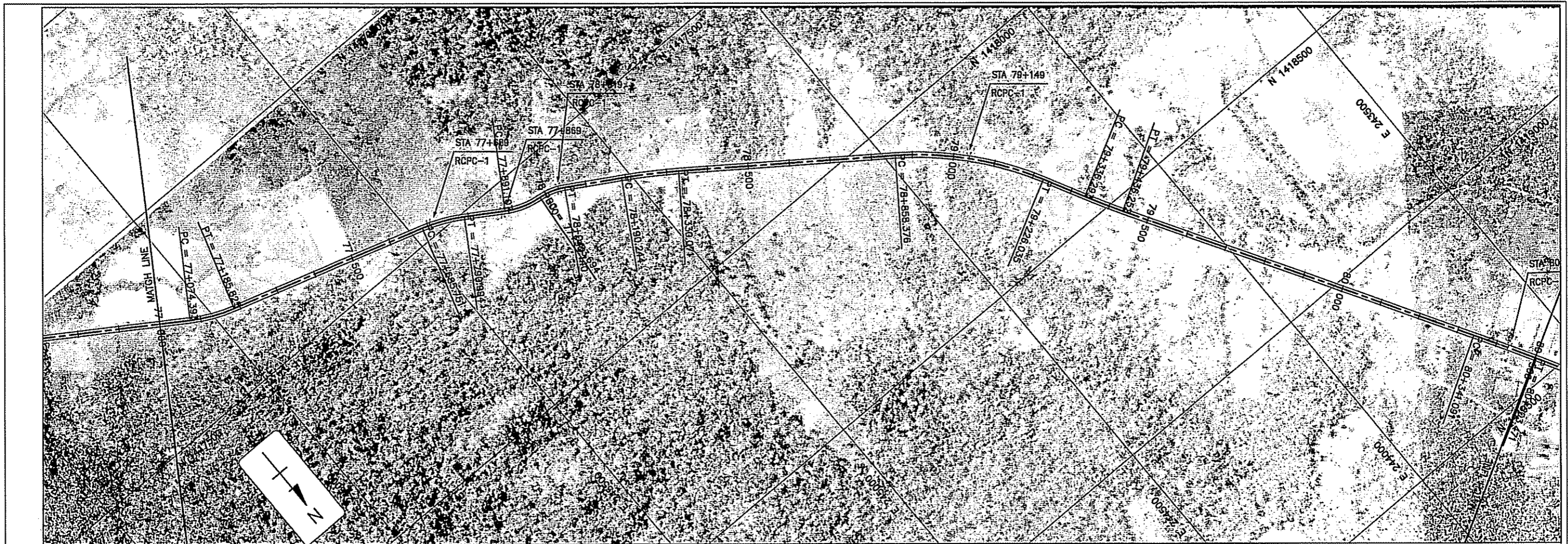
THE STUDY ON THE ROAD NETWORK
 DEVELOPMENT IN THE KINGDOM OF CAMBODIA
 PRE-FEASIBILITY STUDY ON
 IMPROVEMENT OF NATIONAL ROAD NO.57

JAPAN INTERNATIONAL COOPERATION AGENCY
 NIPPON KOEI CO., LTD. &
 KATAHIRA & ENGINEERS INTERNATIONAL

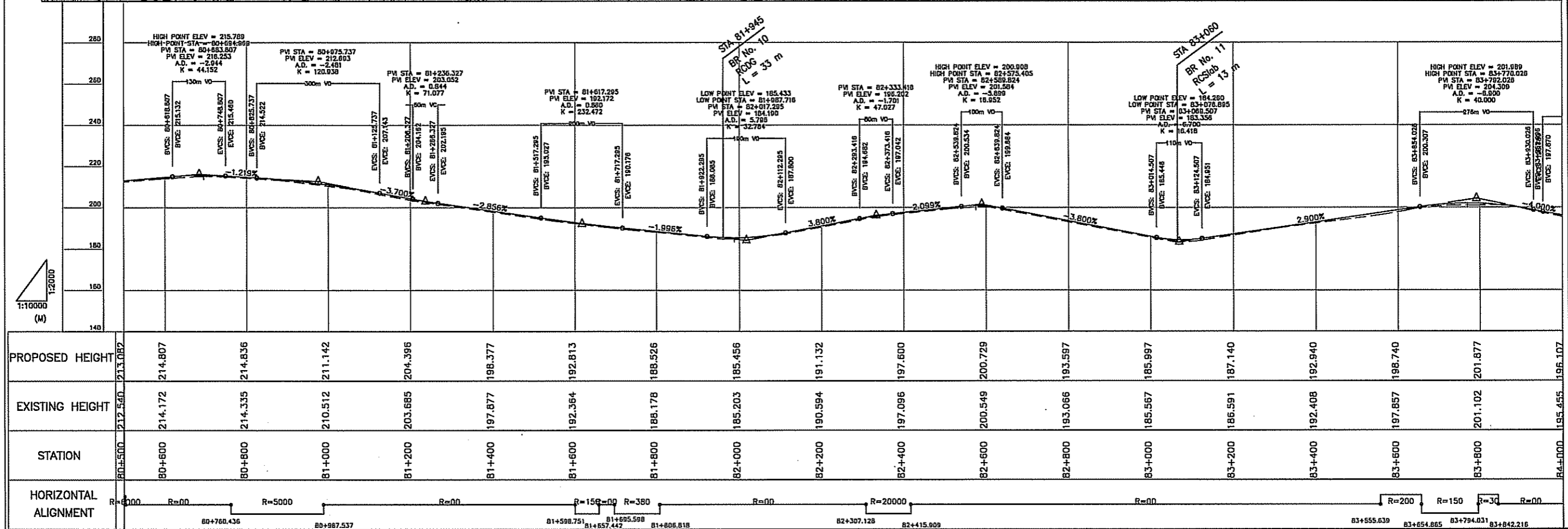
TITLE:
 PLAN AND PROFILE

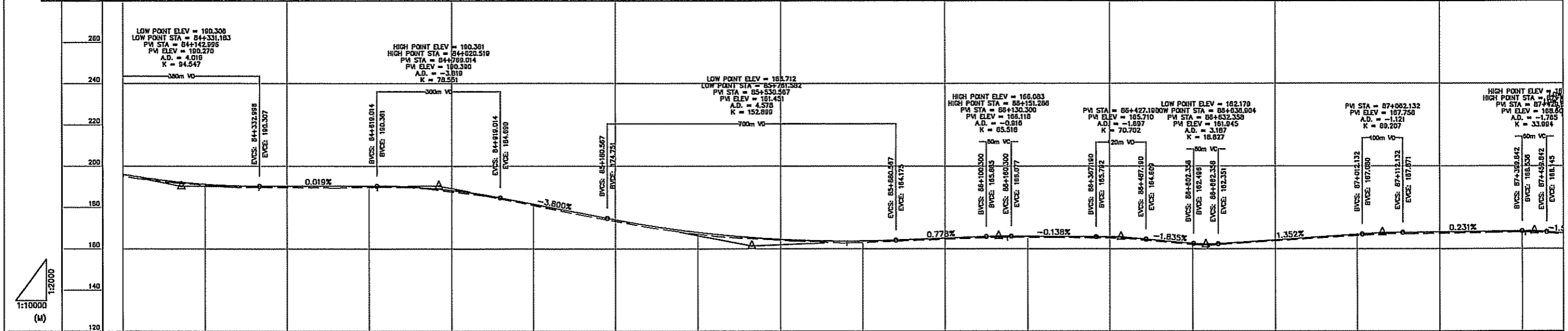
SCALE
 H 1:10,000
 V 1:2,000

DRAWING No :
 A-26

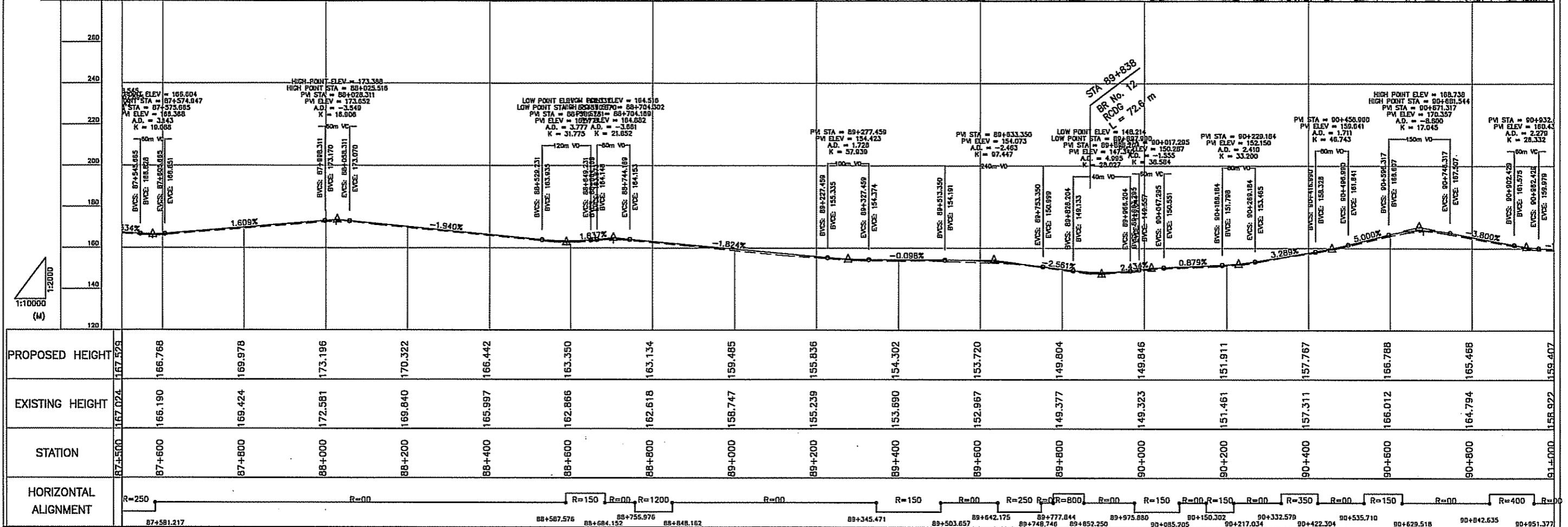
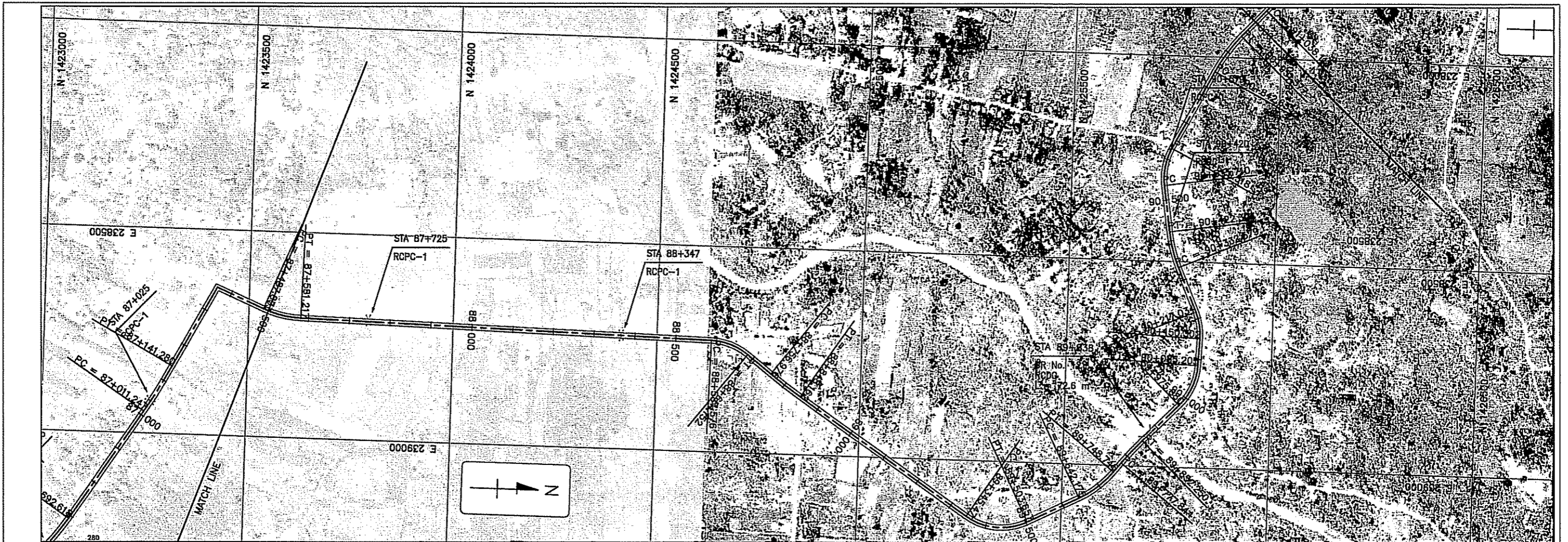


PROPOSED HEIGHT	EXISTING HEIGHT	STATION	HORIZONTAL ALIGNMENT
237.461	237.065	77+000	R=00
241.861	241.155	77+200	R=400
245.966	245.495	77+400	R=00
249.950	249.455	77+600	R=400
256.483	255.522	77+800	R=00
260.057	259.526	78+000	R=200
254.253	253.664	78+200	R=150
243.809	243.262	78+400	R=00
237.184	236.463	78+600	R=1500
230.559	229.938	78+800	R=00
223.934	223.512	79+000	R=800
220.696	220.057	79+200	R=00
220.165	219.497	79+400	R=2000
217.905	217.136	79+600	R=00
214.496	213.963	79+800	R=00
211.062	210.546	80+000	R=00
208.045	207.409	80+200	R=00
211.357	210.829	80+400	R=6000
213.082	212.540	80+500	R=6000





PROPOSED HEIGHT	196.107	191.216	190.319	190.358	188.311	181.613	174.025	167.987	164.566	163.760	165.104	166.022	165.671	162.539	164.212	166.916	168.074	168.536	167.529	
EXISTING HEIGHT	195.455	190.775	189.666	189.791	187.615	180.990	173.315	167.126	164.201	163.047	164.605	165.528	165.098	161.992	163.801	166.319	167.393	168.027	167.024	
STATION	84+000	84+200	84+400	84+600	84+800	85+000	85+200	85+400	85+600	85+800	86+000	86+200	86+400	86+600	86+800	87+000	87+200	87+400	87+500	
HORIZONTAL ALIGNMENT	<p>R=00 R=1000 R=00 R=00 R=600 R=450 R=00 R=150 R=00 R=800 R=00 R=500 R=00 R=500 R=00 R=1500 R=00 R=00 R=00 R=250</p> <p>84+423.528 84+570.387 84+682.895 85+141.169 85+252.768 85+387.517 85+404.722 85+441.056 85+846.045 86+148.053 86+372.498 86+516.425 86+892.618 87+011.247 87+141.280 87+487.873</p>																			



PROPOSED HEIGHT	167.529	166.768	169.978	173.196	170.322	166.442	163.350	163.134	159.485	155.836	154.302	153.720	149.804	149.846	151.911	157.767	166.788	165.468	159.407	
EXISTING HEIGHT	167.024	166.190	169.424	172.581	169.840	165.997	162.866	162.618	158.747	155.239	153.690	152.967	149.377	149.323	151.461	157.311	166.012	164.794	158.922	
STATION	87+500	87+600	87+800	88+000	88+200	88+400	88+600	88+800	89+000	89+200	89+400	89+600	89+800	90+000	90+200	90+400	90+600	90+800	91+000	
HORIZONTAL ALIGNMENT	<p>R=250 R=00 R=150 R=00 R=1200 R=00 R=150 R=00 R=250 R=00 R=800 R=00 R=150 R=00 R=150 R=00 R=350 R=00 R=150 R=00 R=400 R=00</p> <p>87+581.217 88+587.576 88+684.152 88+755.976 88+848.182 88+345.471 89+503.657 89+642.175 89+777.844 89+748.746 89+852.250 89+975.880 90+150.302 90+332.578 90+422.304 90+535.710 90+629.518 90+842.635 90+951.377</p>																			