

PROPOSED HEIGHT	59.620	59.266	58.560	57.781	56.865	55.949	55.289	55.113	54.936	54.095	53.014	49.806	48.669	48.447	48.225	46.748	45.127	40.726	41.363	
EXISTING HEIGHT	58.068	58.708	57.995	57.282	56.317	55.422	54.766	54.514	54.288	53.587	52.269	49.152	48.094	47.917	47.721	46.022	44.633	40.183	40.860	
STATION	38+500	38+600	38+800	39+000	39+200	39+400	39+600	39+800	40+000	40+200	40+400	40+600	40+800	41+000	41+200	41+400	41+600	41+800	42+000	
HORIZONTAL ALIGNMENT																				



MINISTRY OF PUBLIC WORKS AND TRANSPORT
 Cur Norodom Blvd & St 106, Phnom Penh, Kingdom Cambodia
 Tel : (855) 23 426099 - Fax : (855) 23 426098

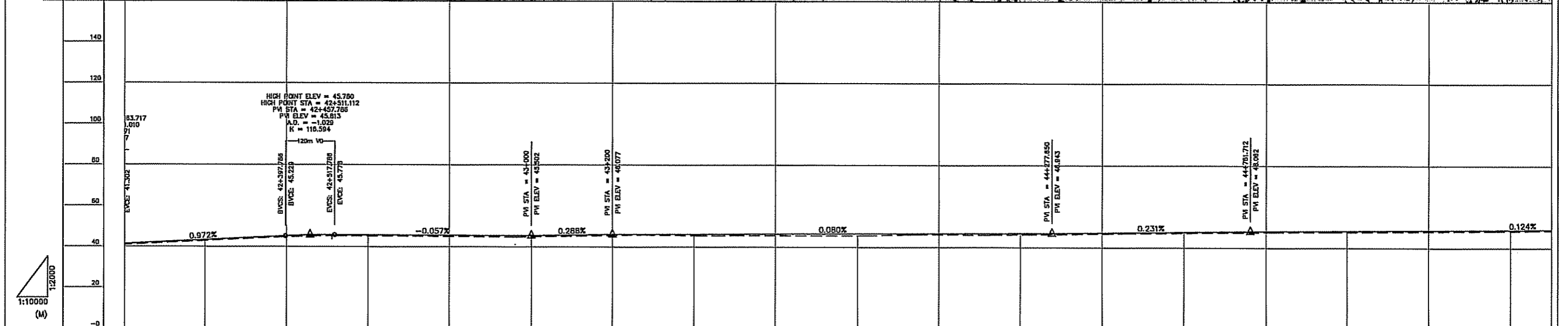
THE STUDY ON THE ROAD NETWORK
 DEVELOPMENT IN THE KINGDOM OF CAMBODIA
 PRE-FEASIBILITY STUDY ON
 IMPROVEMENT OF NATIONAL ROAD NO.57

JAPAN INTERNATIONAL COOPERATION AGENCY
 NIPPON KOEI CO., LTD. &
 KATAHIRA & ENGINEERS INTERNATIONAL

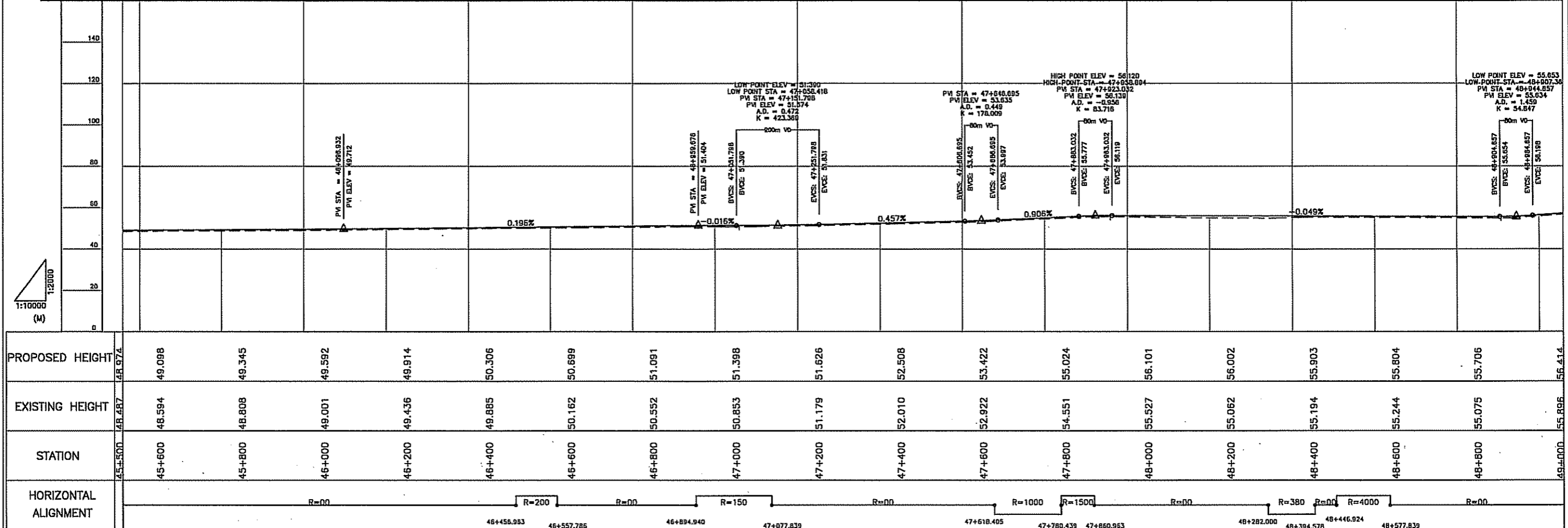
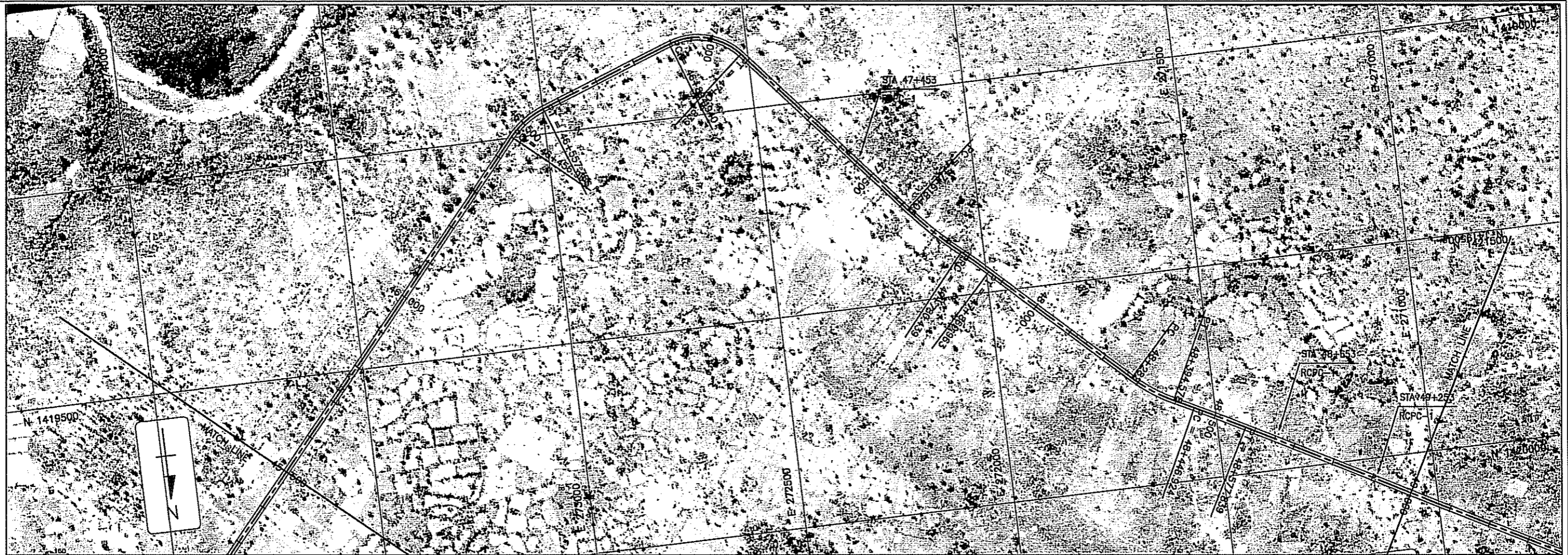
TITLE :
 PLAN AND PROFILE

SCALE
 H 1:10,000
 V 1:2,000

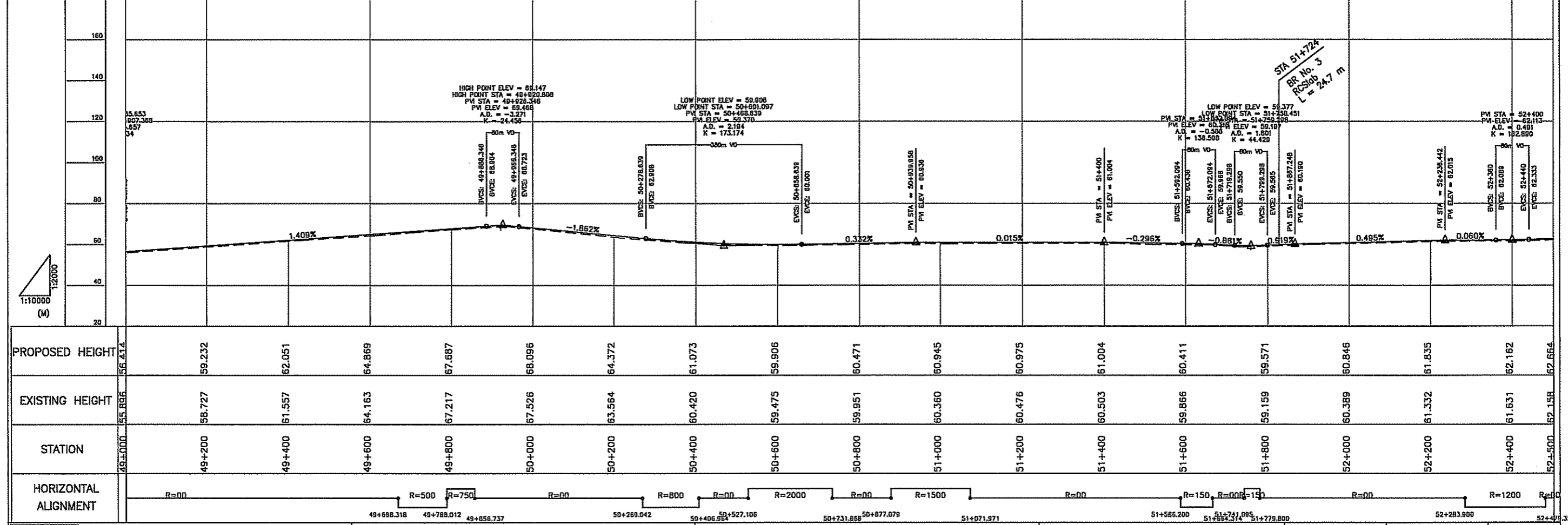
DRAWING No :
 A-16



PROPOSED HEIGHT	42+000	42+200	42+400	42+600	42+800	43+000	43+200	43+400	43+600	43+800	44+000	44+200	44+400	44+600	44+800	45+000	45+200	45+400	45+500	
PROPOSED HEIGHT	41.353	43.307	45.251	45.731	45.617	45.502	46.077	46.238	46.398	46.559	46.720	46.880	47.226	47.688	48.110	48.357	48.604	48.851	48.974	
EXISTING HEIGHT	40.880	42.832	44.746	45.203	45.002	44.946	45.577	45.582	45.695	45.662	46.220	46.235	46.758	47.198	47.593	47.770	48.036	48.326	48.487	
STATION	42+000	42+200	42+400	42+600	42+800	43+000	43+200	43+400	43+600	43+800	44+000	44+200	44+400	44+600	44+800	45+000	45+200	45+400	45+500	
HORIZONTAL ALIGNMENT																				



PROPOSED HEIGHT	48.974	49.098	49.345	49.592	49.914	50.306	50.699	51.091	51.398	51.626	52.508	53.422	55.024	56.101	56.002	55.903	55.804	55.706	56.414	
EXISTING HEIGHT	48.487	48.594	48.808	49.001	49.436	49.885	50.162	50.552	50.853	51.179	52.010	52.922	54.551	55.527	55.062	55.194	55.244	55.075	55.896	
STATION	45+500	45+600	45+800	46+000	46+200	46+400	46+600	46+800	47+000	47+200	47+400	47+600	47+800	48+000	48+200	48+400	48+600	48+800	49+000	
HORIZONTAL ALIGNMENT	<p style="text-align: center;"> R=00 R=200 R=00 R=150 R=00 R=1000 R=1500 R=00 R=380 R=00 R=4000 R=00 </p>																			



PROPOSED HEIGHT	EXISTING HEIGHT	STATION	HORIZONTAL ALIGNMENT
56.414	55.896	49+000	R=00
59.232	58.727	49+200	R=00
62.051	61.557	49+400	R=00
64.869	64.163	49+600	R=500
67.687	67.217	49+800	R=750
68.096	67.526	50+000	R=00
64.372	63.564	50+200	R=800
61.073	60.420	50+400	R=00
59.906	59.475	50+600	R=2000
60.471	59.951	50+800	R=00
60.945	60.360	51+000	R=1500
60.975	60.476	51+200	R=00
61.004	60.503	51+400	R=00
60.411	59.866	51+600	R=150
59.571	59.159	51+800	R=008
60.846	60.389	52+000	R=150
61.835	61.332	52+200	R=00
62.162	61.651	52+400	R=1200
62.654	62.158	52+500	R=00



MINISTRY OF PUBLIC WORKS AND TRANSPORT
 Cor Norodom Blvd & St 106, Phnom Penh, Kingdom Cambodia
 Tel : (855) 23 426099 - Fax : (855) 23 426098

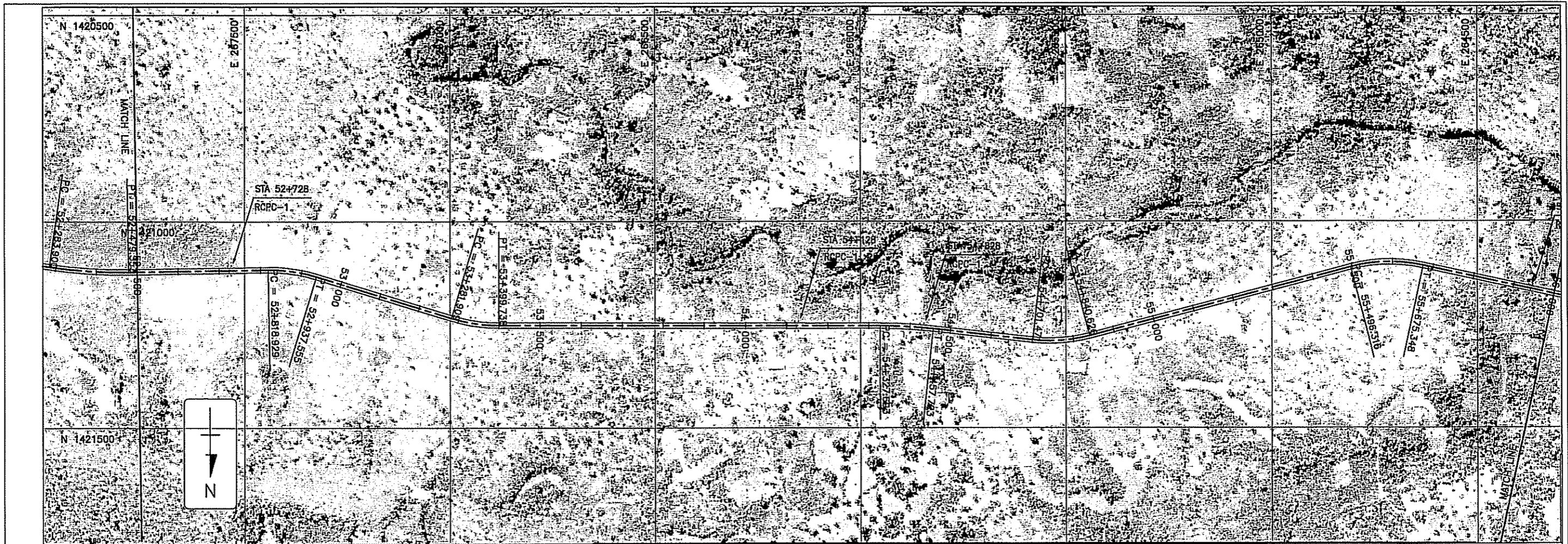
THE STUDY ON THE ROAD NETWORK
 DEVELOPMENT IN THE KINGDOM OF CAMBODIA
 PRE-FEASIBILITY STUDY ON
 IMPROVEMENT OF NATIONAL ROAD NO.57

JAPAN INTERNATIONAL COOPERATION AGENCY
 NIPPON KOEI CO., LTD. &
 KATAHIRA & ENGINEERS INTERNATIONAL

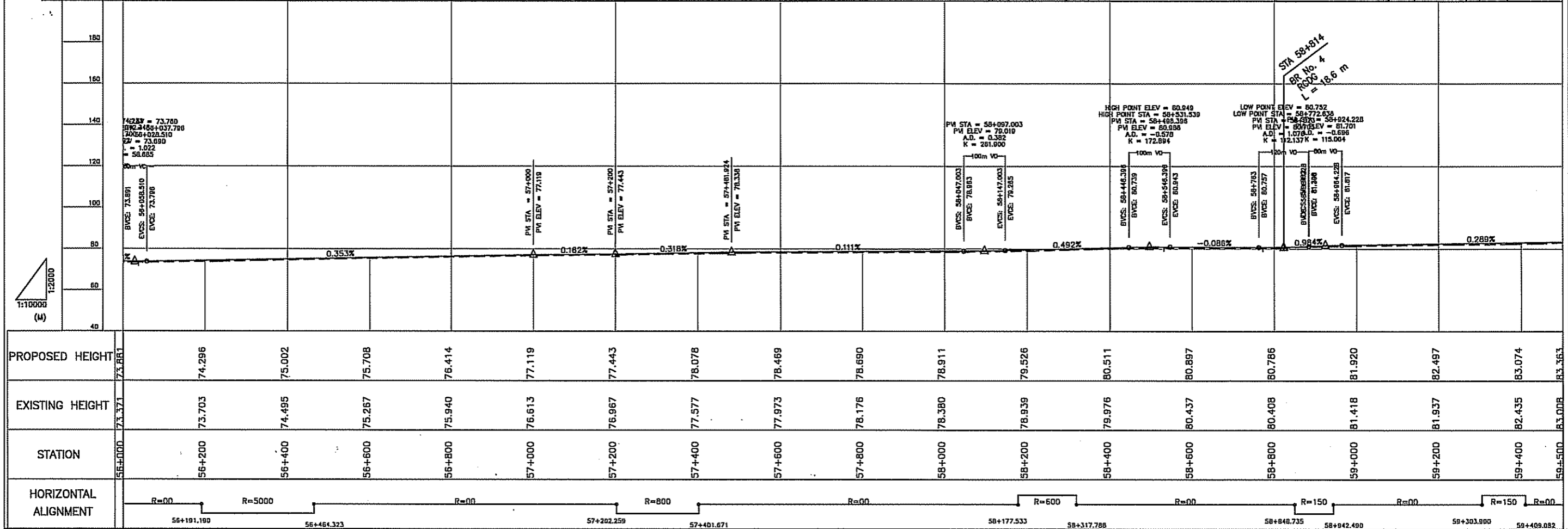
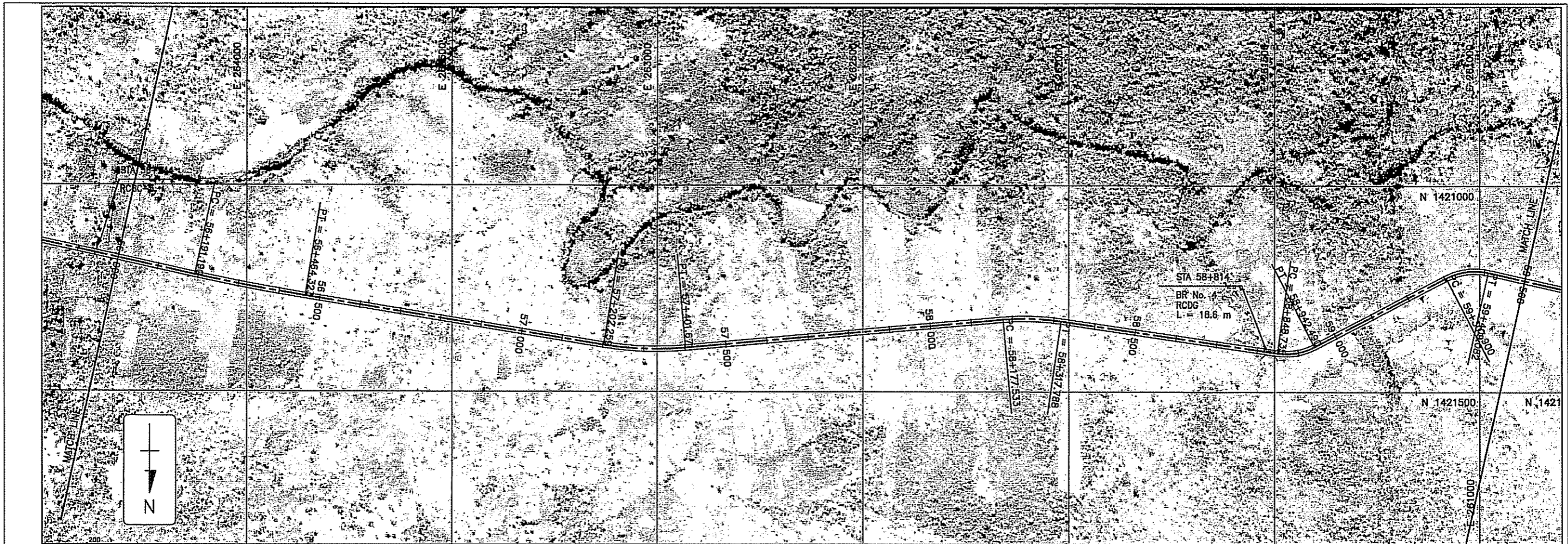
TITLE:
 PLAN AND PROFILE

SCALE
 H 1:10,000
 V 1:2,000

DRAWING No :
 A-19



180 140 120 100 80 60 40 20																			HIGH POINT ELEVATION HIGH POINT STA = 55+594 PM ELEV = 89.612 A.D. = -1.483 K = 15.484																			
	BVC STA = 55+850.700 ELEV = 85.748 CYCE = 74.188 BVC STA = 55+888.510																																					
PROPOSED HEIGHT	52+500	52+600	52+800	53+000	53+200	53+400	53+600	53+800	54+000	54+200	54+400	54+600	54+800	55+000	55+200	55+400	55+600	55+800	56+000	52.664	63.214	64.244	64.949	65.653	66.030	66.408	66.990	67.573	68.155	68.738	69.175	69.577	69.979	70.558	71.271	71.984	73.204	73.881
EXISTING HEIGHT	52+500	52+600	52+800	53+000	53+200	53+400	53+600	53+800	54+000	54+200	54+400	54+600	54+800	55+000	55+200	55+400	55+600	55+800	56+000	62.158	62.695	63.768	64.448	65.148	65.422	65.908	66.406	66.995	67.628	68.297	68.624	68.916	69.561	70.104	70.648	71.491	72.636	73.371
STATION	52+500	52+600	52+800	53+000	53+200	53+400	53+600	53+800	54+000	54+200	54+400	54+600	54+800	55+000	55+200	55+400	55+600	55+800	56+000																			
HORIZONTAL ALIGNMENT																																						



PROPOSED HEIGHT	EXISTING HEIGHT	STATION	HORIZONTAL ALIGNMENT
73.881	73.371	56+000	R=00
74.296	73.703	56+200	R=5000
75.002	74.495	56+400	R=00
75.708	75.267	56+600	R=00
76.414	75.940	56+800	R=800
77.119	76.613	57+000	R=00
77.443	76.967	57+200	R=00
78.078	77.577	57+400	R=00
78.469	77.973	57+600	R=00
78.690	78.176	57+800	R=00
78.911	78.380	58+000	R=600
79.526	78.939	58+200	R=00
80.511	79.976	58+400	R=00
80.897	80.437	58+600	R=150
80.786	80.408	58+800	R=00
81.920	81.418	59+000	R=150
82.497	81.937	59+200	R=00
83.074	82.435	59+400	R=150
83.363	83.008	59+500	R=00



MINISTRY OF PUBLIC WORKS AND TRANSPORT
 Cnr Norodom Blvd & St 106, Phnom Penh, Kingdom Cambodia
 Tel : (855) 23 426099 - Fax : (855) 23 426098

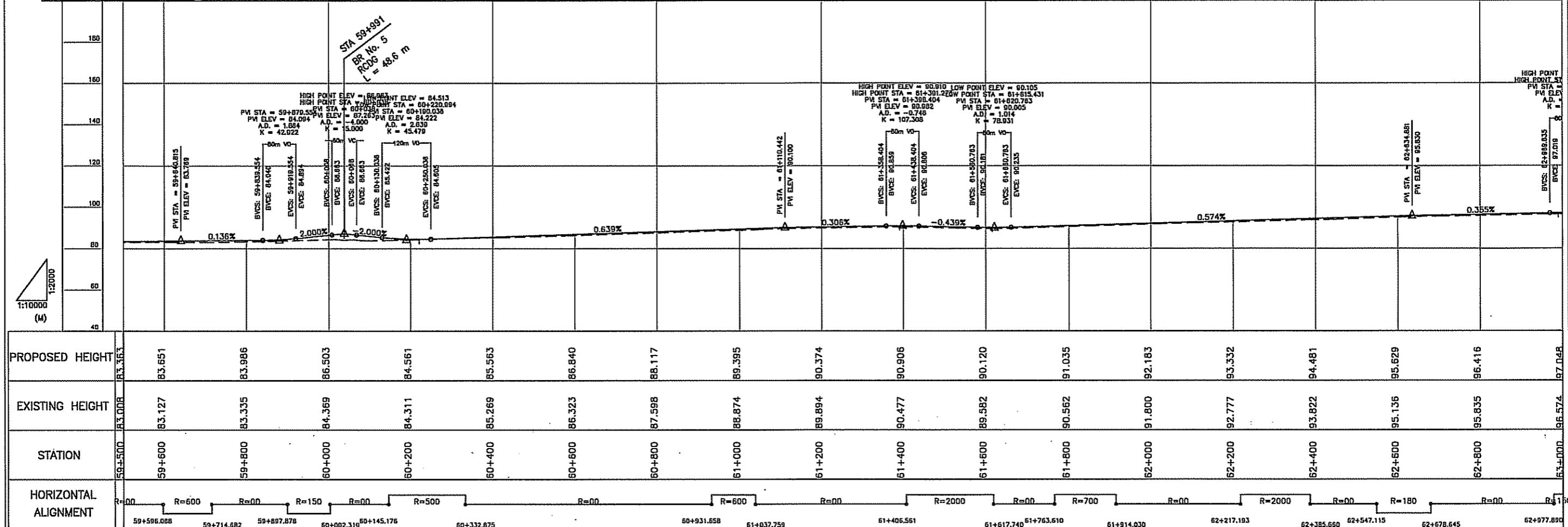
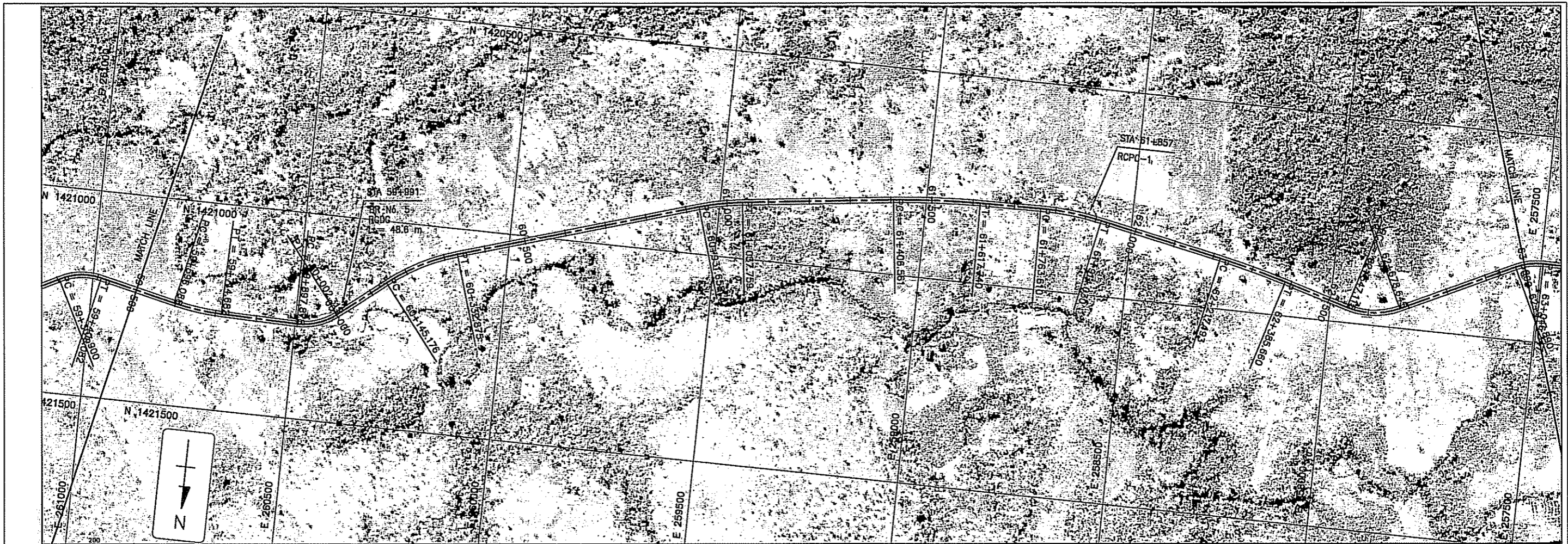
THE STUDY ON THE ROAD NETWORK
 DEVELOPMENT IN THE KINGDOM OF CAMBODIA
 PRE-FEASIBILITY STUDY ON
 IMPROVEMENT OF NATIONAL ROAD NO.57

JAPAN INTERNATIONAL COOPERATION AGENCY
 NIPPON KOEI CO., LTD. &
 KATAHIRA & ENGINEERS INTERNATIONAL

TITLE:
 PLAN AND PROFILE

SCALE
 H 1:10,000
 V 1:2,000

DRAWING No :
 A-21



PROPOSED HEIGHT	EXISTING HEIGHT	STATION	HORIZONTAL ALIGNMENT
83.363	83.008	59+500	R=00
83.651	83.127	59+600	R=600
83.986	83.335	59+800	R=00
86.503	84.369	60+000	R=150
84.561	84.311	60+200	R=00
85.563	85.269	60+400	R=500
86.840	86.323	60+600	R=00
88.117	87.598	60+800	R=00
89.395	88.874	61+000	R=600
90.374	89.894	61+200	R=00
90.906	90.477	61+400	R=00
90.120	89.582	61+600	R=2000
91.035	90.562	61+800	R=00
92.183	91.800	62+000	R=700
93.332	92.777	62+200	R=00
94.481	93.822	62+400	R=2000
95.629	95.136	62+600	R=00
96.416	95.835	62+800	R=180
97.048	96.574	63+000	R=00



MINISTRY OF PUBLIC WORKS AND TRANSPORT
 Cnr Norodom Blvd & St 106, Phnom Penh, Kingdom Cambodia
 Tel : (855) 23 426099 - Fax : (855) 23 426098

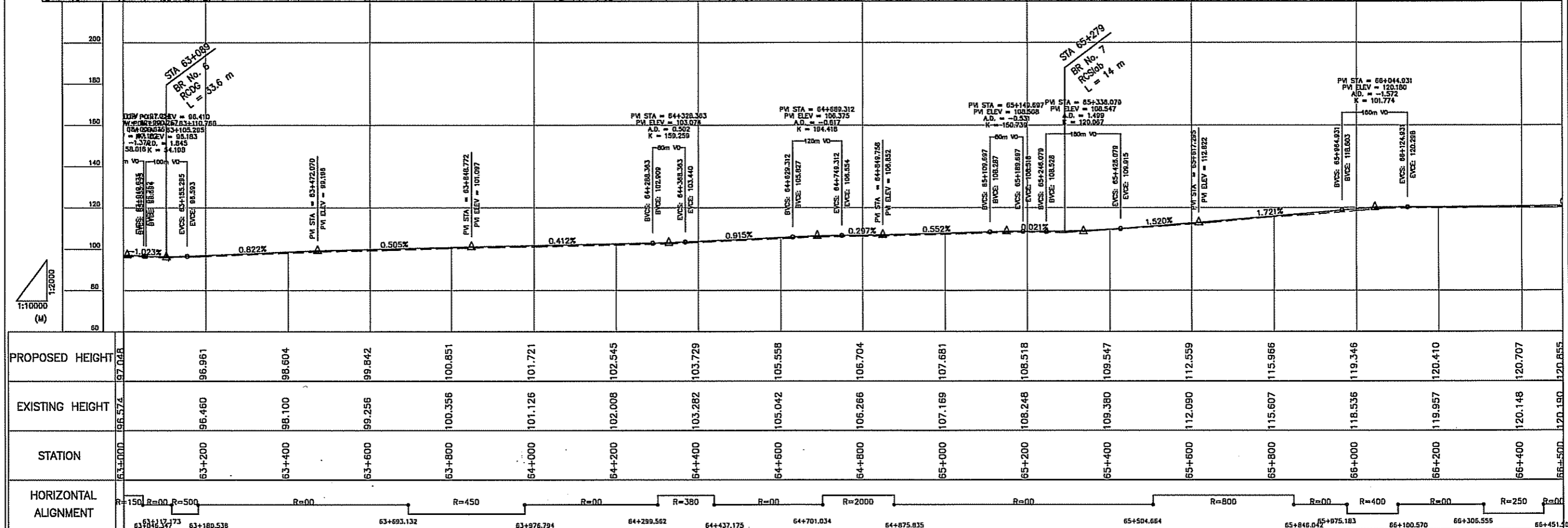
THE STUDY ON THE ROAD NETWORK
 DEVELOPMENT IN THE KINGDOM OF CAMBODIA
 PRE-FEASIBILITY STUDY ON
 IMPROVEMENT OF NATIONAL ROAD NO.57

JAPAN INTERNATIONAL COOPERATION AGENCY
 NIPPON KOEI CO., LTD. &
 KATAHIRA & ENGINEERS INTERNATIONAL

TITLE:
 PLAN AND PROFILE

SCALE
 H 1:10,000
 V 1:2,000

DRAWING No :
 A-22



PROPOSED HEIGHT	97.048	96.961	98.604	99.842	100.851	101.721	102.545	103.729	105.558	106.704	107.681	108.518	109.547	112.559	115.966	119.346	120.410	120.707	120.855
EXISTING HEIGHT	96.574	96.460	98.100	99.256	100.356	101.126	102.008	103.282	105.042	106.266	107.169	108.248	109.380	112.090	115.607	118.536	119.957	120.148	120.190
STATION	63+000	63+200	63+400	63+600	63+800	64+000	64+200	64+400	64+600	64+800	65+000	65+200	65+400	65+600	65+800	66+000	66+200	66+400	66+500
HORIZONTAL ALIGNMENT	R=150	R=500	R=00	R=00	R=450	R=00	R=00	R=380	R=00	R=2000	R=00	R=00	R=800	R=00	R=400	R=00	R=00	R=250	R=00



MINISTRY OF PUBLIC WORKS AND TRANSPORT
 Cnr Norodom Blvd & St 106, Phnom Penh, Kingdom Cambodia
 Tel: (855) 23 426099 - Fax: (855) 23 426098

THE STUDY ON THE ROAD NETWORK
 DEVELOPMENT IN THE KINGDOM OF CAMBODIA
 PRE-FEASIBILITY STUDY ON
 IMPROVEMENT OF NATIONAL ROAD NO.57

JAPAN INTERNATIONAL COOPERATION AGENCY
 NIPPON KOEI CO., LTD. &
 KATAHIRA & ENGINEERS INTERNATIONAL

TITLE:
 PLAN AND PROFILE

SCALE
 H 1:10,000
 V 1:2,000

DRAWING No :
 A-23