
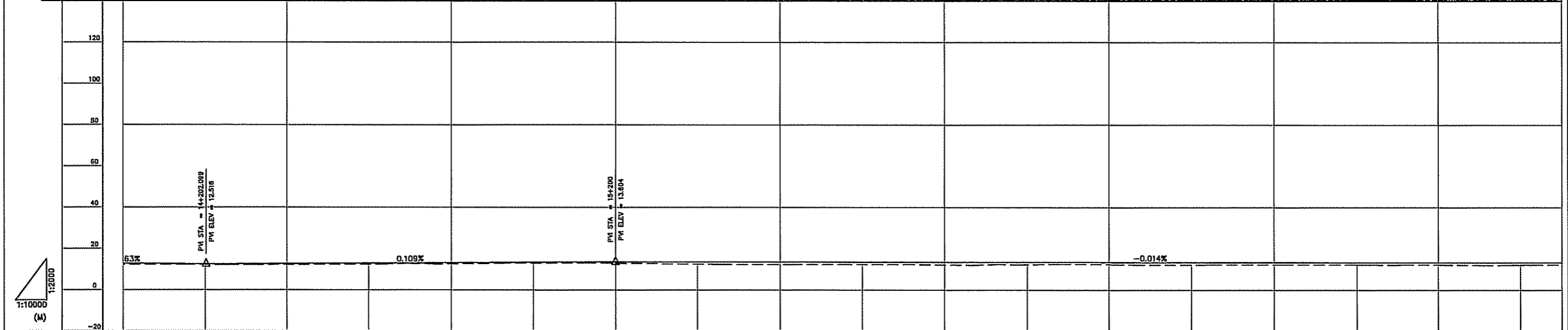
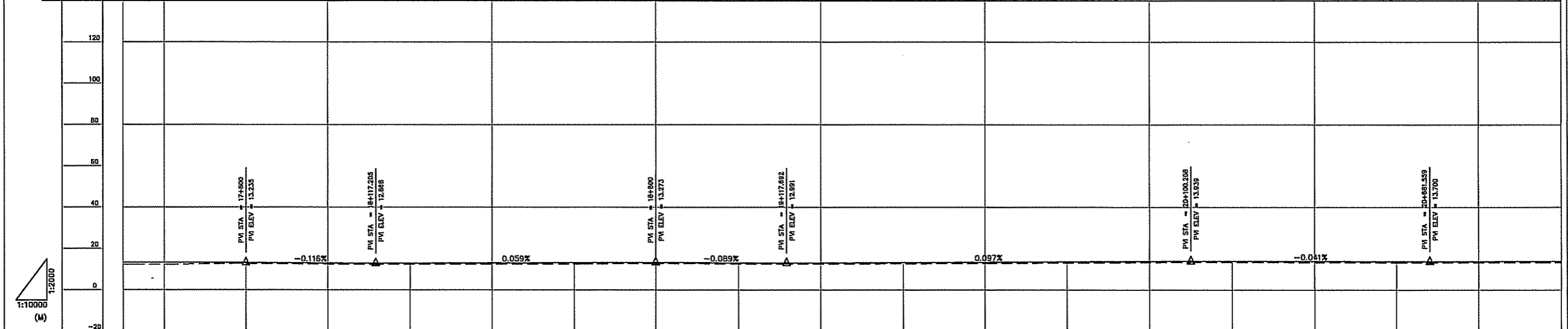
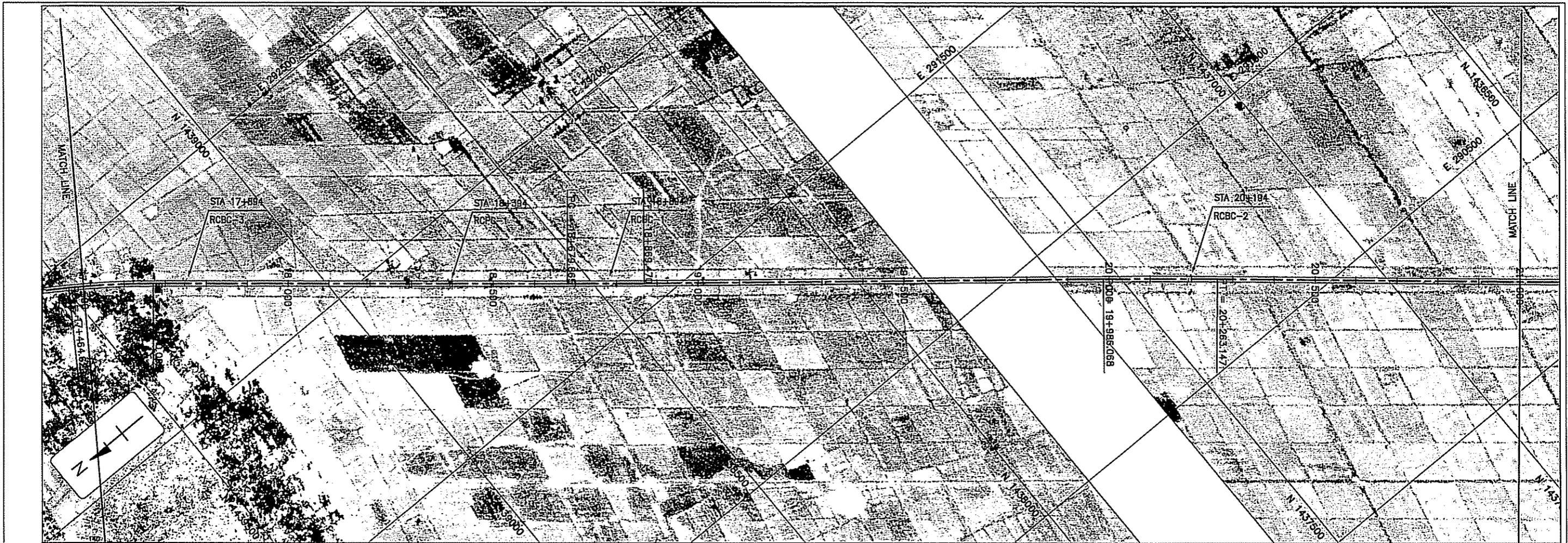


PROPOSED HEIGHT	12.933	12.986	13.093	13.048	13.003	12.962	12.921	12.880	12.839	12.798	12.757	12.976	13.108	13.121	13.133	13.146	13.158	13.171	12.845
EXISTING HEIGHT	12.745	12.197	12.549	12.064	12.503	12.058	12.426	12.105	11.889	12.323	12.257	12.401	12.335	12.253	12.643	12.639	12.662	12.669	12.282
STATION	10+500	10+600	10+800	11+000	11+200	11+400	11+600	11+800	12+000	12+200	12+400	12+600	12+800	13+000	13+200	13+400	13+600	13+800	14+000
HORIZONTAL ALIGNMENT	R=600		R=00				R=10000				R=00		R=10000		R=00				

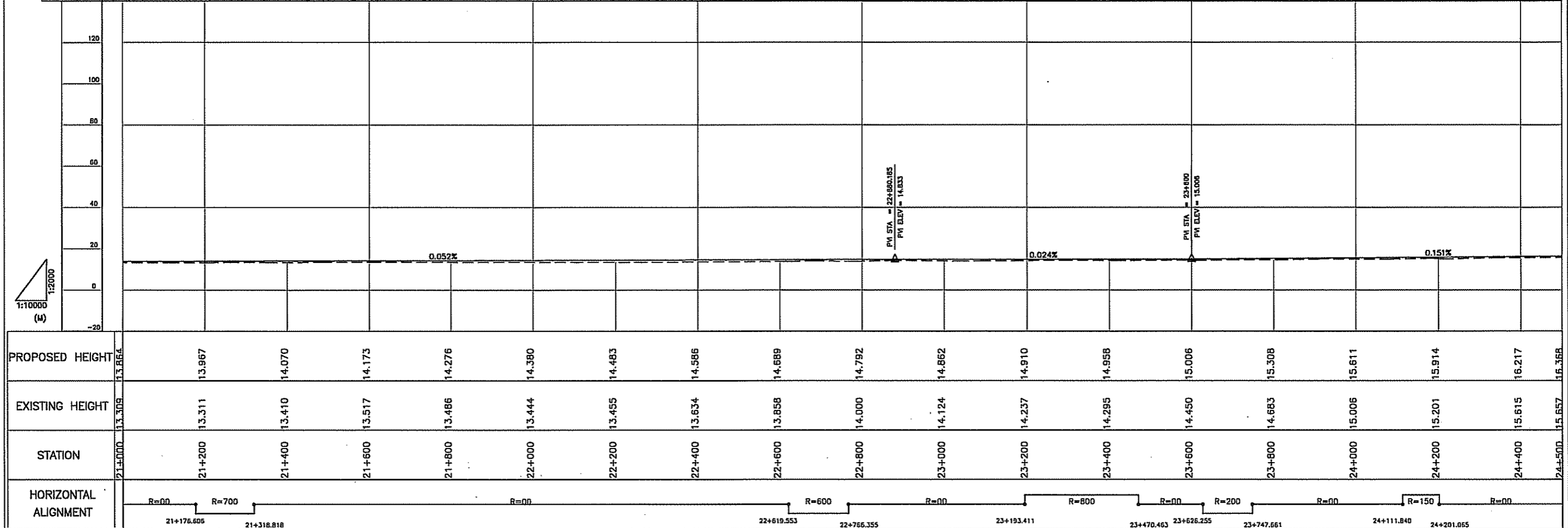
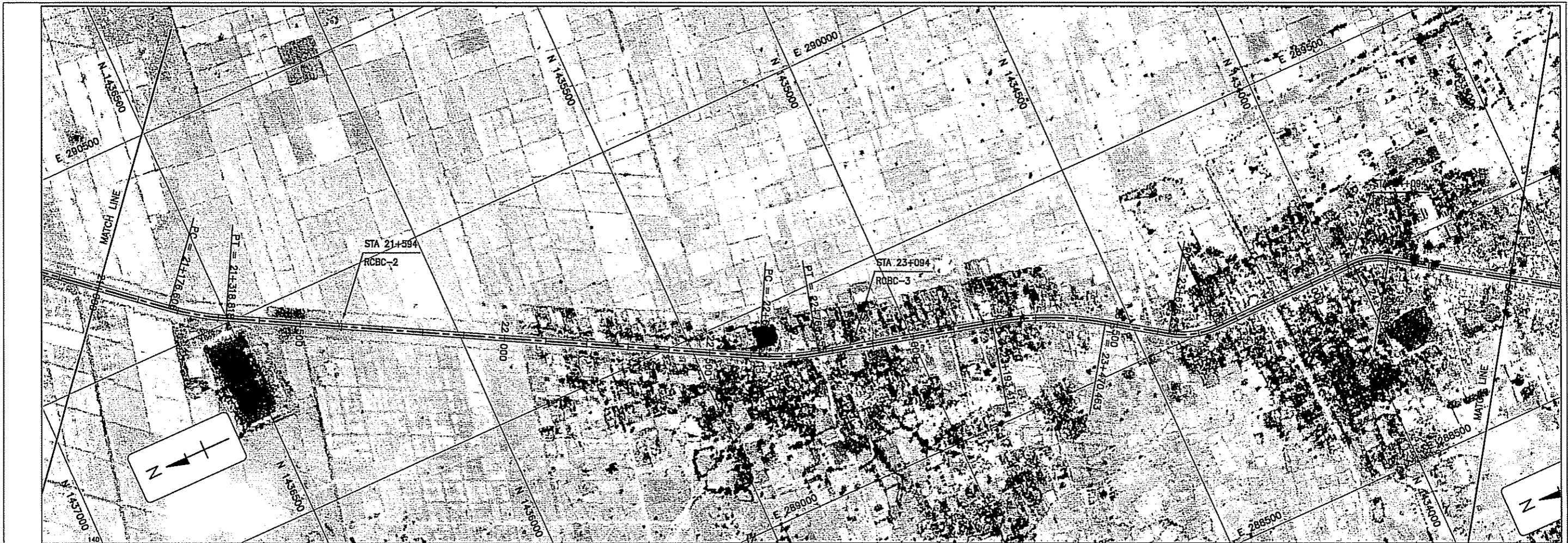
 <p>MINISTRY OF PUBLIC WORKS AND TRANSPORT          Cnr Norodom Blvd &amp; St 106, Phnom Penh, Kingdom Cambodia          Tel : (855) 23 426099 - Fax : (855) 23 426098</p>	<p>THE STUDY ON THE ROAD NETWORK          DEVELOPMENT IN THE KINGDOM OF CAMBODIA          PRE-FEASIBILITY STUDY ON          IMPROVEMENT OF NATIONAL ROAD NO.57</p>	<p>JAPAN INTERNATIONAL COOPERATION AGENCY          NIPPON KOEI CO., LTD. &amp;          KATAHIRA &amp; ENGINEERS INTERNATIONAL</p>	<p>TITLE:          PLAN AND PROFILE</p>	<p>SCALE          H 1:10,000          V 1:2,000</p>	DRAWING No.:
					A-08



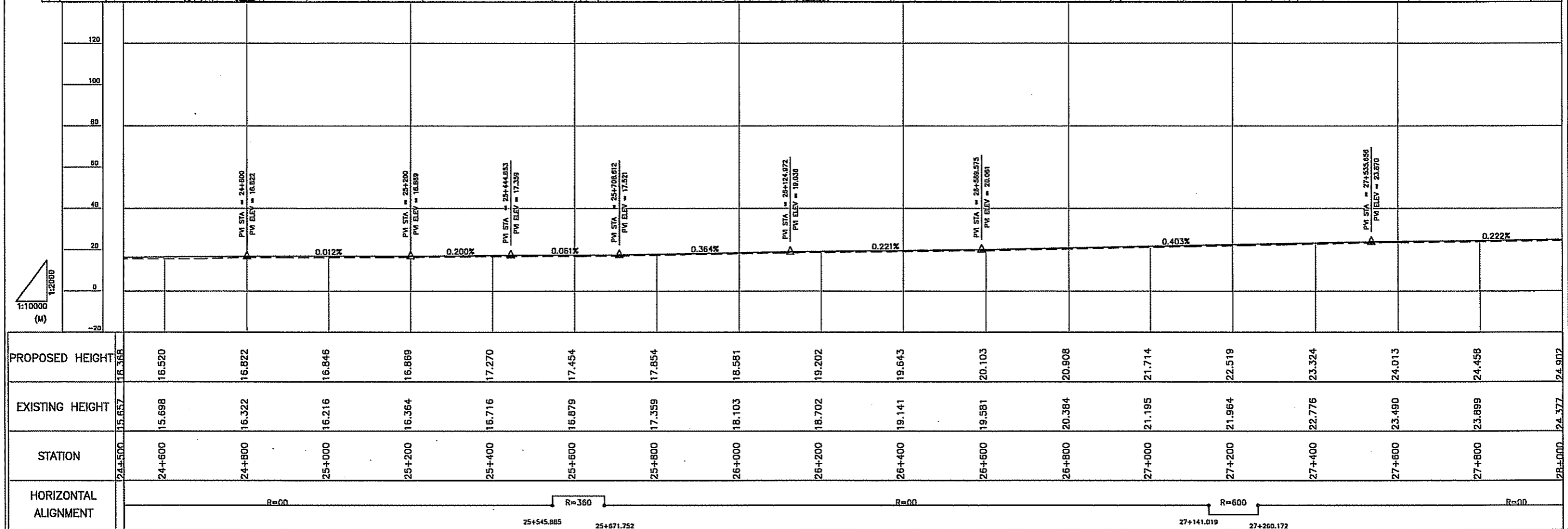
PROPOSED HEIGHT	12.845	12.519	12.732	12.950	13.168	13.386	13.604	13.576	13.548	13.519	13.491	13.462	13.434	13.406	13.377	13.349	13.320	13.292	13.278							
EXISTING HEIGHT	12.282	12.227	12.269	12.457	12.618	12.966	12.965	12.573	12.359	12.381	12.184	12.278	12.413	12.208	12.313	12.332	12.254	12.211	12.282							
STATION	14+000	14+200	14+400	14+600	14+800	15+000	15+200	15+400	15+600	15+800	16+000	16+200	16+400	16+600	16+800	17+000	17+200	17+400	17+500							
HORIZONTAL ALIGNMENT	R=00		R=400		R=00			R=2000		R=00		R=2000		R=00		R=250		R=00		R=6000		R=00		R=2000		
	14+186.200	14+329.307					15+260.584		15+648.079	15+951.284	16+249.658	16+395.303	16+509.315	16+822.811	16+980.816			17+464.620								



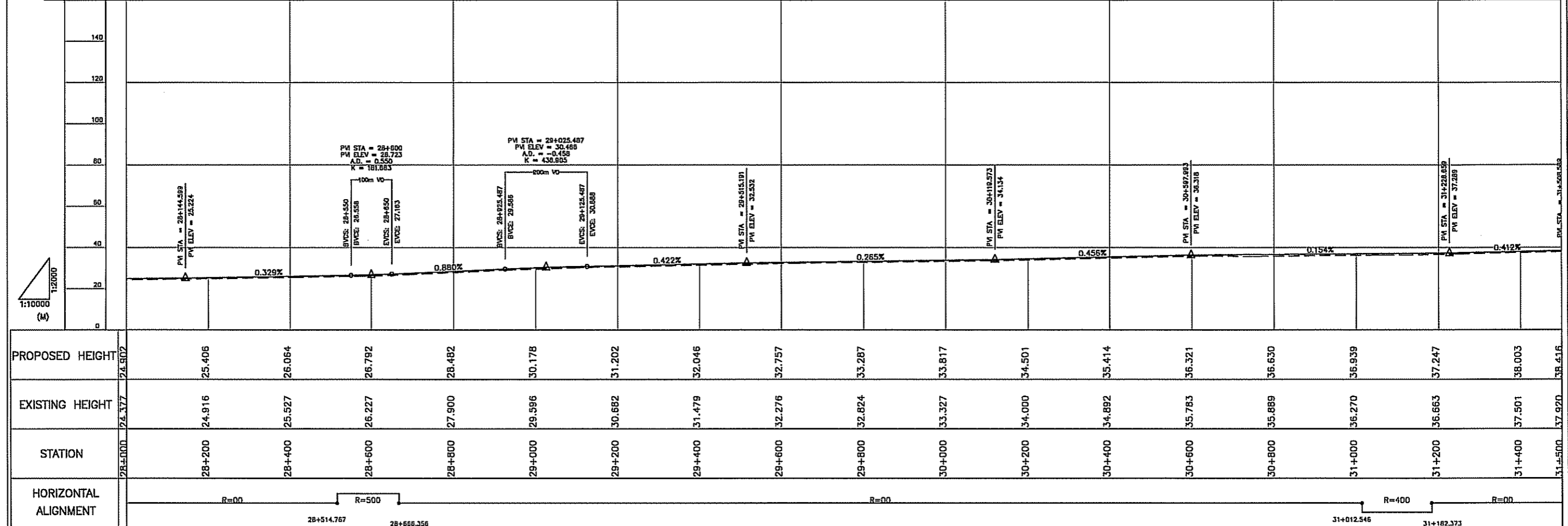
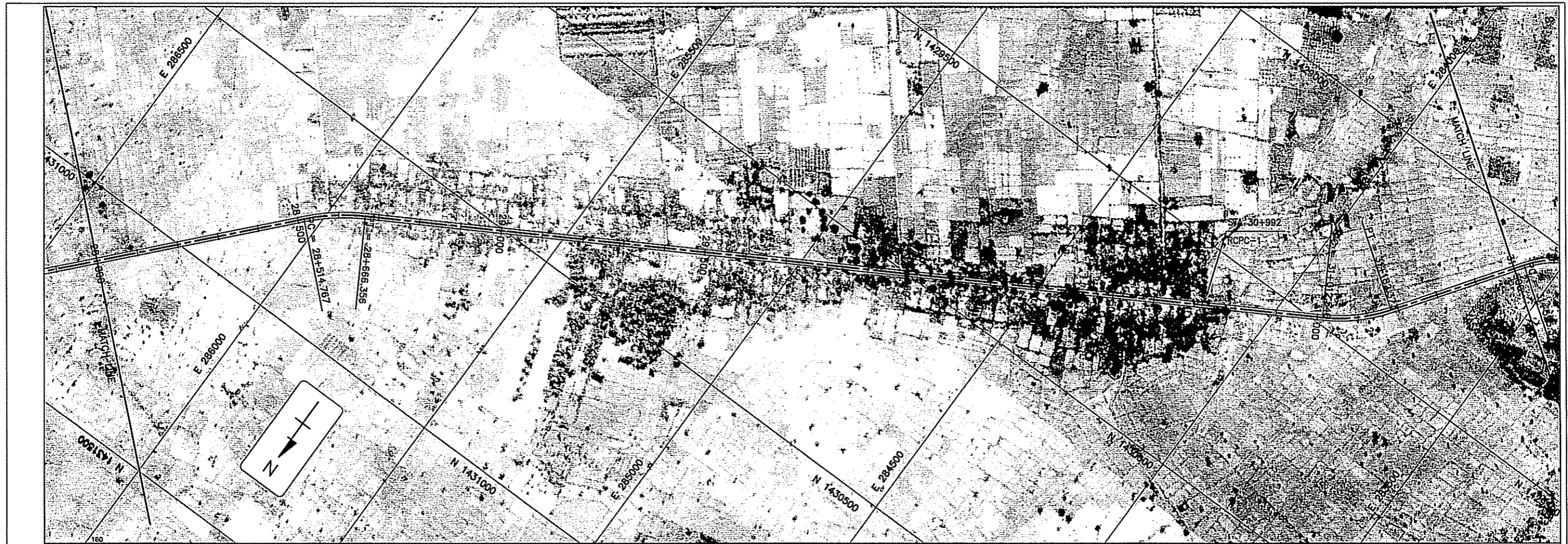
PROPOSED HEIGHT	17+500	17+600	17+800	18+000	18+200	18+400	18+600	18+800	19+000	19+200	19+400	19+600	19+800	20+000	20+200	20+400	20+600	20+800	21+000
PROPOSED HEIGHT	13.278	13.264	13.235	13.004	12.917	13.036	13.154	13.273	13.095	13.070	13.263	13.456	13.649	13.843	13.898	13.816	13.734	13.761	13.864
EXISTING HEIGHT	12.282	12.376	12.735	12.504	12.403	12.489	12.575	12.773	12.595	12.555	12.700	12.845	13.074	13.309	13.398	13.316	13.234	13.272	13.309
STATION	17+500	17+600	17+800	18+000	18+200	18+400	18+600	18+800	19+000	19+200	19+400	19+600	19+800	20+000	20+200	20+400	20+600	20+800	21+000
HORIZONTAL ALIGNMENT	R=2000		R=00				R=20000		R=00				R=15000		R=00				

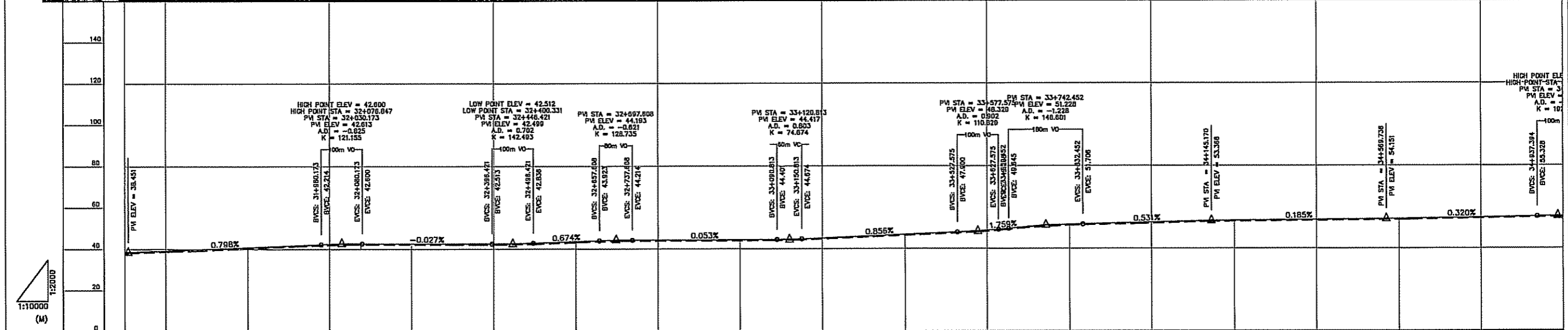


PROPOSED HEIGHT	13.864	13.967	14.070	14.173	14.276	14.380	14.483	14.586	14.689	14.792	14.862	14.910	14.958	15.006	15.308	15.611	15.914	16.217	16.368				
EXISTING HEIGHT	13.309	13.311	13.410	13.517	13.486	13.444	13.455	13.634	13.858	14.000	14.124	14.237	14.295	14.450	14.683	15.005	15.201	15.615	15.657				
STATION	21+000	21+200	21+400	21+600	21+800	22+000	22+200	22+400	22+600	22+800	23+000	23+200	23+400	23+600	23+800	24+000	24+200	24+400	24+500				
HORIZONTAL ALIGNMENT	R=00		R=700		R=00			R=600		R=00		R=800		R=00		R=200		R=00		R=150		R=00	
	21+176.605	21+318.818						22+619.553	22+766.355			23+193.411		23+470.403	23+626.255	23+747.661		24+111.840	24+201.055				

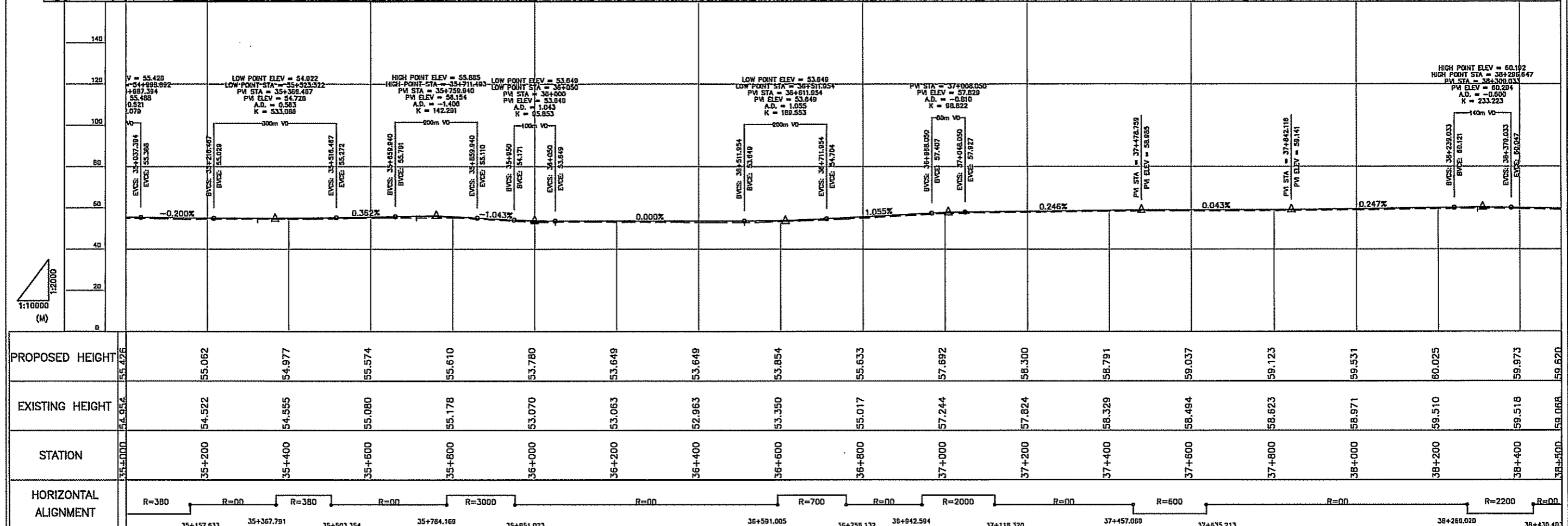
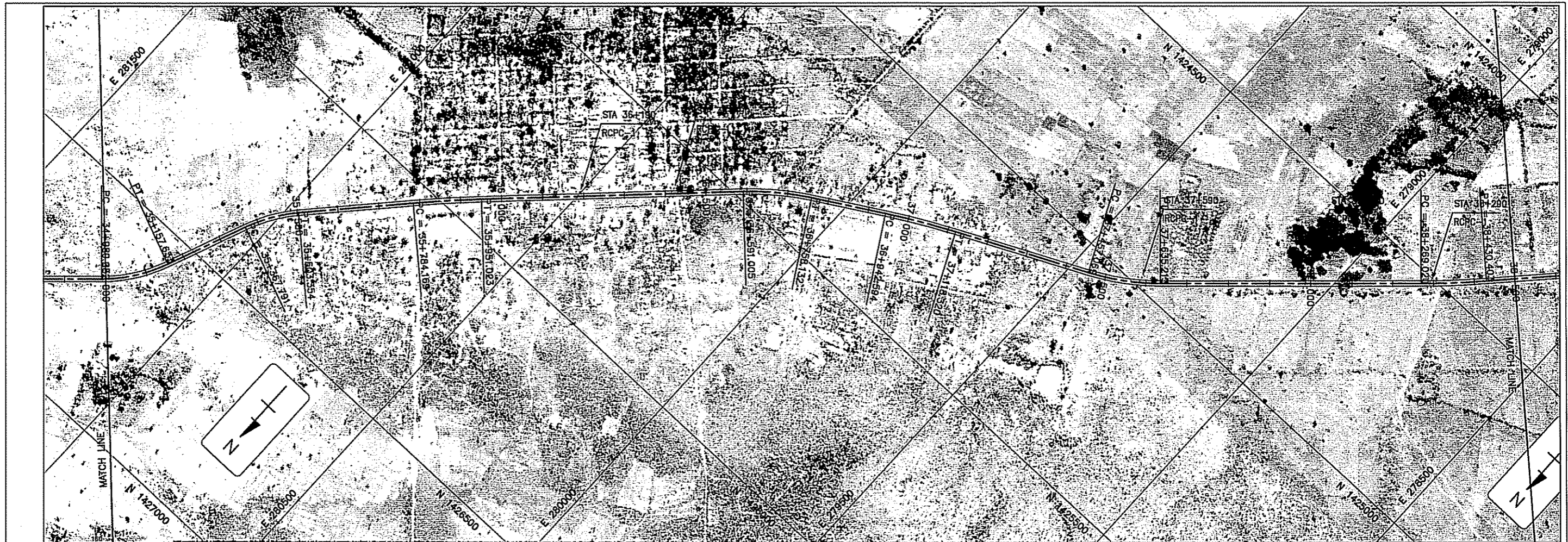


PROPOSED HEIGHT	16.368	16.520	16.822	16.846	16.869	17.270	17.454	17.854	18.581	19.202	19.643	20.103	20.908	21.714	22.519	23.324	24.013	24.458	24.907
EXISTING HEIGHT	15.657	15.698	16.322	16.216	16.364	16.716	16.879	17.359	18.103	18.702	19.141	19.581	20.384	21.195	21.964	22.776	23.490	23.899	24.377
STATION	24+500	24+600	24+800	25+000	25+200	25+400	25+600	25+800	26+000	26+200	26+400	26+600	26+800	27+000	27+200	27+400	27+600	27+800	28+000
HORIZONTAL ALIGNMENT	R=00		R=360				R=00				R=600		R=00						





PROPOSED HEIGHT	38.416	39.181	40.777	42.356	42.567	42.512	43.535	44.247	44.353	45.095	46.808	48.757	51.498	52.595	53.467	53.837	54.248	54.888	55.426
EXISTING HEIGHT	37.970	38.649	40.186	41.755	42.030	42.001	43.028	43.741	43.815	44.595	46.307	48.222	51.110	52.012	52.967	53.337	53.707	54.388	54.954
STATION	31+500	31+600	31+800	32+000	32+200	32+400	32+600	32+800	33+000	33+200	33+400	33+600	33+800	34+000	34+200	34+400	34+600	34+800	35+000
HORIZONTAL ALIGNMENT	R=250		R=00		R=180		R=00		R=400		R=00		R=00		R=00		R=00		R=80
	31+5349	31+666.813			32+328.044	32+453.619				33+579.468	33+714.685								



PROPOSED HEIGHT	EXISTING HEIGHT	STATION	HORIZONTAL ALIGNMENT
55.476	54.954	35+000	R=380
55.062	54.522	35+200	R=00
54.977	54.555	35+400	R=380
55.574	55.080	35+600	R=00
55.610	55.178	35+800	R=3000
53.780	53.070	36+000	R=00
53.649	53.063	36+200	R=700
53.649	52.863	36+400	R=00
53.854	53.350	36+600	R=2000
55.633	55.017	36+800	R=00
57.692	57.244	37+000	R=600
58.300	57.824	37+200	R=00
58.791	58.329	37+400	R=2200
59.037	58.494	37+600	R=00
59.123	58.623	37+800	R=00
59.531	58.971	38+000	R=00
60.025	59.510	38+200	R=00
59.973	59.518	38+400	R=00
59.620	59.068	38+500	R=00



MINISTRY OF PUBLIC WORKS AND TRANSPORT  
 Car Norodom Blvd & St 106, Phnom Penh, Kingdom Cambodia  
 Tel : (855) 23 426099 - Fax : (855) 23 426098

THE STUDY ON THE ROAD NETWORK  
 DEVELOPMENT IN THE KINGDOM OF CAMBODIA  
 PRE-FEASIBILITY STUDY ON  
 IMPROVEMENT OF NATIONAL ROAD NO.57

JAPAN INTERNATIONAL COOPERATION AGENCY  
 NIPPON KOEI CO., LTD. &  
 KATAHIRA & ENGINEERS INTERNATIONAL

TITLE :  
 PLAN AND PROFILE

SCALE  
 H 1:10,000  
 V 1:2,000

DRAWING No :  
 A-15