

No.

--

Japan International Cooperation Agency (JICA)
Nicaraguan Institute of Territorial Studies (INETER)

The Study for Establishment of Base Maps and Hazard Maps for GIS in the Republic of Nicaragua

Final Report (English Edition)

Summary

October, 2006

**Pasco Corporation
OYO International Corporation**

SD
JR
06-080

Names of companies and software are trademarks. In this report, ® or TM is not included after each trademark.

Preface

In response to the request from the Government of Nicaragua, the Government of Japan decided to conduct the Study for Establishment of Base Maps and hazard Maps for GIS in the Republic of Nicaragua and entrusted the study to Japan International Cooperation Agency (JICA).

JICA organized and dispatched a study team headed by Mr. Fujio Ito of Pasco Corporation and composed of Pasco Corporation and OYO International Co., to Nicaragua six times from January 2004 to October 2006.

The study was completed as scheduled with submission of the base maps, hazard maps and associated products. The study also included technology transfer to the counterpart agency.

We strongly believe that all the outputs of this project are important to protect lives and properties of people in Nicaragua from various types of natural hazards. We hope that the digital topographic maps and hazard maps are shared by all the people in the Republic of Nicaragua and utilized as the foundations of national development. It is clear that continued endeavors for establishing sound and effective policies and projects on disaster management and for implementing them at national, local and community levels are inevitable to achieve sustainable development in the Republic of Nicaragua. For this purpose, we have no doubt that all stakeholders will benefit from the study results. We also hope that this study will contribute to promote future projects and enhance friendly relationship between two countries.

Finally, we wish to express our sincere appreciation to the officials concerned in the Government of Nicaragua for their close cooperation extended to the Study.

Kazuhisa MATSUOKA

Vice President

Japan International Cooperation Agency

Contents

1	INTRODUCTION	1
1-1	Objectives of the Study	1
1-2	Scope of the Study	2
1-2-1	Scope of the Study	2
1-2-2	Additional Study Items	2
1-3	Study Area.....	2
1-4	Implementing Organizations	4
1-5	Study Team.....	4
1-6	Host Agencies	5
1-6-1	INETER	5
1-6-2	Organizing Steering Committee	7
1-7	Work Flow of the Study	7
1-8	Final Products	9
2	ACHIEVEMENTS	10
2-1	Aerial Photography	10
2-2	Topographic Mapping in Managua (1/5,000)	11
2-3	Topographic Mapping (1/50,000)	12
2-4	GIS Database of Infrastructures for Disaster Mitigation	13
2-5	Earthquake Hazard Map.....	14
2-6	Volcanic Hazard Map.....	15
2-7	Flood Hazard Map	17
2-8	Tsunami Hazard Map.....	19
3	TECHNOLOGY TRANSFER	20
3-1	Introduction.....	20
3-1-1	Targets.....	20
3-1-2	Method.....	20
3-1-3	Installation of Equipment for OJT	20
3-2	Programs for INETER	21
3-2-1	Topographic Mapping.....	22
3-2-2	Hazard Mapping	28
3-2-3	Training in Japan	32
3-3	Seminars.....	32
4	DISCUSSIONS	34
4-1	Steering Committee.....	34
4-2	Technology Transfer.....	34
4-3	Additional Work Items	34
4-4	Specifications and Others.....	34
5	PROCESSES OF TOPOGRAPHIC MAPPING FOR 1/50,000	36
5-1	Data Collection	37
5-2	Approach to GIS Database.....	37
5-3	Aerial Photography (1/40,000 and 1/20,000)	37
5-4	Control Point Survey and Pricking	38
5-5	Aerial Photograph Scanning	39
5-6	Aerial Triangulation	39

5-7	Preparation of Ortho-photographs for Field identification	41
5-8	Field Identification	41
5-9	Digital Plotting.....	42
5-10	Map Symbolization	44
5-11	Field Completion.....	46
5-12	Supplementary Digital Plotting and Map symbolization	46
5-13	GIS Data Creation	46
5-14	Film Output for Map Printing Plate	47
5-15	Printing.....	47
6	PROCESSES OF TOPOGRAPHIC MAPPING (1/5,000)	49
6-1	Existing Data Collection	49
6-2	Ground Control Point Survey.....	49
6-3	Changes of Mapping Scope	49
6-4	Aerial Triangulation	49
6-5	Field Identification	50
6-6	Plotting.....	50
6-7	Field Completion for Topographic Mapping.....	50
6-8	Final Data delivery of Topographic map at a scale of 1/5,000.....	50
7	GIS DATABASE OF INFRASTRUCTURES FOR DISASTER MITIGATION	52
8	PROCESSES OF THE HAZARD MAPPING	53
8-1	Earthquake	53
8-2	Volcano.....	57
8-2-1	Target Area.....	57
8-2-2	Target Phenomena.....	57
8-2-3	Collection and Analyses of Existing Sources on Volcanic Geology	57
8-2-4	Volcanic Aerial Photograph Interpretation.....	58
8-2-5	Field Identification on Volcanic Geomorphology/Geology	58
8-2-6	Volcanic Hazard Simulation	59
8-2-7	Hazard Mapping	61
8-3	Flood	62
8-3-1	General.....	62
8-3-2	Characteristics of the Area.....	62
8-3-3	Flood Simulation	63
8-3-4	Flood Hazard Mapping	64
8-3-5	The Draft Hazard Map.....	66
8-4	Tsunami.....	66
8-4-1	Simulation Method	67
8-4-2	Bathymetry Survey in the Shallow Coastal Area in Front of Masachapa and Its Vicinity for the Tsunami Analysis.....	70
9	RECOMMENDATIONS	72
9-1	Recommendations to INETER.....	72
9-1-1	Basic Topographic and Geographic Information	72
9-1-2	Hazard Mapping	72
9-1-3	Uses and Development of GIS Technology	74
9-1-4	Georiesgos GIS	74
9-2	Recommendations to other institutions and the National System.....	75
9-2-1	Uses of Hazard Maps.....	75
9-2-2	Strengthening Disaster Prevention.....	76

Figures

Figure 1-1	Study Area.....	3
Figure 1-2	Study Organization.....	4
Figure 1-3	Organization Chart.....	6
Figure 1-4	Work Flow.....	8
Figure 2-1	Black & White Aerial Photographs Over Managua City.....	10
Figure 2-2	Topographic Map (Managua City at A Scale of 1/5,000).....	11
Figure 2-3	Sample of Topographic Map.....	12
Figure 2-4	GIS Database of Infrastructures for Disaster Mitigation.....	13
Figure 2-5	Hazard Map of Aeropuerto Fault Earthquake.....	14
Figure 2-6	Geological Map of the Target Region in Map 1.....	15
Figure 2-7	Hazard Map 2 of Pyroclastic Flow, Lahar and Bomb.....	16
Figure 2-8	Large Size (Type G) Hazard Map for City.....	17
Figure 2-9	Small Size (Type P) Hazard Map for Inhabitants.....	18
Figure 2-10	Examples of Tsunami Hazard Maps.....	19
Figure 3-1	System Diagram.....	21
Figure 5-1	Topographic Mapping Work Flow.....	36
Figure 5-2	Photo Index.....	38
Figure 5-3	Aerial Triangulation Blocks.....	40
Figure 5-4	Ortho-photographs.....	42
Figure 5-5	Planimetric Feature.....	43
Figure 5-6	Work Flow of DEM Generation.....	43
Figure 5-7	Topology Checking and Created Shapes.....	44
Figure 5-8	Plotted Data (DXF) of Map Sheet Name "MATEARE".....	45
Figure 5-9	Symbolization Sample Map Sheet Name "MATEARE".....	45
Figure 5-10	Process of GIS Data Creation.....	47
Figure 6-1	Original Planning Area.....	49
Figure 6-2	Final Mapped Area.....	49
Figure 6-3	Generalized Built-Up Area.....	51
Figure 6-4	No Generalized Built-Up Area.....	51
Figure 7-1	GIS Database of Infrastructures for Disaster Mitigation.....	52
Figure 8-1	Fundamental Flow of Analysis for the Ground Motion Calculation.....	53
Figure 8-2	Ground Model of the Study Area.....	56
Figure 8-3	Example of Earthquake Hazard Map (Cofradia Fault).....	57
Figure 8-4	Geological map of Telica – El Hoyo volcanic complex area.....	59
Figure 8-5	Example of Simulation on Tephra fall from the Summit of the Volcán Telica.....	60
Figure 8-6	Geology (top) and Lava Flow (bottom).....	61
Figure 8-7	Location of the Maravilla River.....	62
Figure 8-8	Catchment Areas of the Maravilla River.....	62
Figure 8-9	Shade Map of the Lower Part of the Maravilla River.....	62
Figure 8-10	Return Period 200 Years.....	63
Figure 8-11	Hydrograph: Return Period 200 Years.....	64
Figure 8-12	Image of Water Depth.....	65
Figure 8-13	Draft Hazard Map (Type G).....	66
Figure 8-14	Draft Hazard Map (Type P).....	66
Figure 8-15	Location of Fault Models.....	67
Figure 8-16	Grid System Developed for Analysis.....	68
Figure 8-17	An Example of Maximum Inundation Depth.....	69
Figure 8-18	Comparison of Observed Data and Simulation Result.....	69
Figure 8-19	Comparison of Tide Height in Masachapa with Predicted One at Pt. Sandino.....	70
Figure 8-20	The Area which the sounding was completed by March 6, 2005.....	71

Tables

Table 1-1	Study Areas by Type and Zone	2
Table 1-2	JICA Technical Advisors.....	4
Table 1-3	JICA Study Team	5
Table 1-4	Member Lists of Main Counterparts Agency.....	7
Table 1-5	Steering Committee Members.....	7
Table 1-6	Outputs.....	9
Table 3-1	Training Sessions for Digital Topographic Mapping	22
Table 3-2	Training Sessions for Hazard Mapping.....	22
Table 3-3	List of Participants (Control Point Survey).....	23
Table 3-4	List of Participants (Field Identification).....	23
Table 3-5	List of Participants (Introduction to GIS)	25
Table 3-6	List of Participants (ERDAS IMAGINE)	26
Table 3-7	List of Participants (Earthquake)	28
Table 3-8	List of Participants (Volcano).....	29
Table 3-9	List of Participants (Flood)	30
Table 3-10	Topics and Items of OJT (Tsunami)	30
Table 3-11	List of Participants (Tsunami).....	30
Table 3-12	List of Participants (Bathymetry Survey)	31
Table 3-13	Training in Japan.....	32
Table 5-1	Collected Existing Dataset.....	37
Table 5-2	Residuals at Control Points Used for Bundle adjustment	40
Table 5-3	Printing detail.....	48
Table 6-1	Control-Point Residual (RMS).....	50
Table 8-1	Parameter of Scenario Earthquake	55
Table 8-2	Daily Rainfall by Return Period.....	62
Table 8-3	Hydrograph	63
Table 8-4	Parameter of Tsunami Models.....	68

Photos

Photo 2-1	Leica RC 30 Aerial Camera	10
Photo 2-2	Aircraft on the Ground.....	10
Photo 5-1	Land Marking Training	38
Photo 5-2	GPS Observation.....	38
Photo 5-3	Field identification	42
Photo 5-4	Digital plotting work.....	43

1 INTRODUCTION

The government of the Republic of Nicaragua included the prevention and mitigation of disasters in the strategy to relieve poverty. After Hurricane Mitch in 1998, the National System for the Prevention, Mitigation and Attention of Disasters (hereinafter referred to as SINAPRED) was established in 2000 to strengthen measures against disasters at the national level. The Nicaraguan Institute of Territorial Studies (hereinafter referred to as INETER) is in charge of the preparation of hazard maps and national base maps for prevention and mitigation of disasters.

In the strategy, preparation of basic maps of the Pacific region and hazard maps are considered the first priority. However, the existing maps were not updated and they had accuracy problems to represent the actual situations of the territory. Therefore, the existing topographic maps at a scale of 1/50,000 were not adequate as a basic geographic information source for hazard map preparation. Taking those circumstances into consideration, the government of Nicaragua requested the "Study for Establishment of Base Maps and Hazard Maps for GIS in the Republic of Nicaragua" (hereinafter referred to as "the Study") to the government of Japan in June of 2002.

In response to the request, the Japan International Cooperation Agency (hereinafter referred to as JICA), the official agency responsible for the implementation of the technical international cooperation programs of Japan, dispatched a preparatory Study Team to investigate the situation of basic maps and hazard maps in Nicaragua. After a thorough investigation by the preparatory Study Team, the Scope of Work was signed on August 27, 2003. The Nicaraguan Institute of Territorial Studies (hereinafter referred to as INETER) was assigned as the counterpart agency for the implementation of the Study.

The JICA Study Team (hereinafter referred to as "the Study Team") consisting of joint venture entities of PASCO Corporation and OYO International Corporation commenced the Study from January, 2004 and completed in October 2006. This Final Report is compiled to summarize all the Study contents from January 2004 until October 2006.

1-1 Objectives of the Study

The objectives of the Study are the followings:

- (1) Establishment of the national digital base maps (1/50,000) and GIS database in about 20,000 km² of the Pacific-ocean region;
- (2) Establishment of hazard maps;
- (3) Technology transfer regarding the digital national base maps, the GIS database, and the hazard maps.

1-2 Scope of the Study

1-2-1 Scope of the Study

Scope of work is shown in Table 1-1 and the areas by each theme are shown in Figure 1-1.

Table 1-1 Study Areas by Type and Zone

Work Type	Region	Area	Scale
Aerial Photography	Pacific Ocean Region in B/W	12,000 km ²	1/40,000
Aerial Photography	Volcanic area in Color	1,350 km ²	1/20,000
Topographic mapping and GIS database	Pacific Ocean Region	20,000 km ²	1/50,000
Basic facility information map for natural disaster prevention	Pacific Ocean Region	20,000 km ²	1/250,000
Topographic mapping	Managua City	300 km ²	1/5,000
Volcanic Hazard Map	Telica-El Hoyo Volcanic Zone	1,300 km ²	1/50,000
Seismic Hazard Map	Managua Metropolitan Area	700 km ²	1/50,000
Flood Hazard Map	Maravilla River (Masachapa)	100 km ²	1/50,000
Tsunami Hazard Map	The southern coast of the Pacific Ocean region (Corinto, Puerto Sandino, Masachapa, and San Juan del Sur)	120 km	1/50,000

1-2-2 Additional Study Items

INETER requested four additional work items during the meeting held in September in the first year. JICA and the Study Team had discussed the matter and recognized the significance of the work items. The work items were decided to be conducted during the second year of the Study. Followings were the items added to the scope of the Study:

- (a) Topographic-map preparation at a scale of 1/5,000 in the City of Managua
- (b) Preparation of information maps on disaster prevention related-facilities in the Study area
- (c) Bathymetry survey in the shallow coastal area in front of Masachapa and its vicinity for tsunami hazard analysis
- (d) Profile and cross sectional leveling of a river for flood simulation

1-3 Study Area

The study area of topographic maps at a scale of 1/50,000 covers about 20,000 km² of the Pacific-ocean region.

The study area of topographic maps at a scale of 1/5,000 covers about 300 km² in the Managua City area. Basic facility information map for natural disaster prevention covers about 20,000 km² of the Pacific-ocean region. The hazard mapping areas within the topographic mapping area are shown in Figure 1-1.

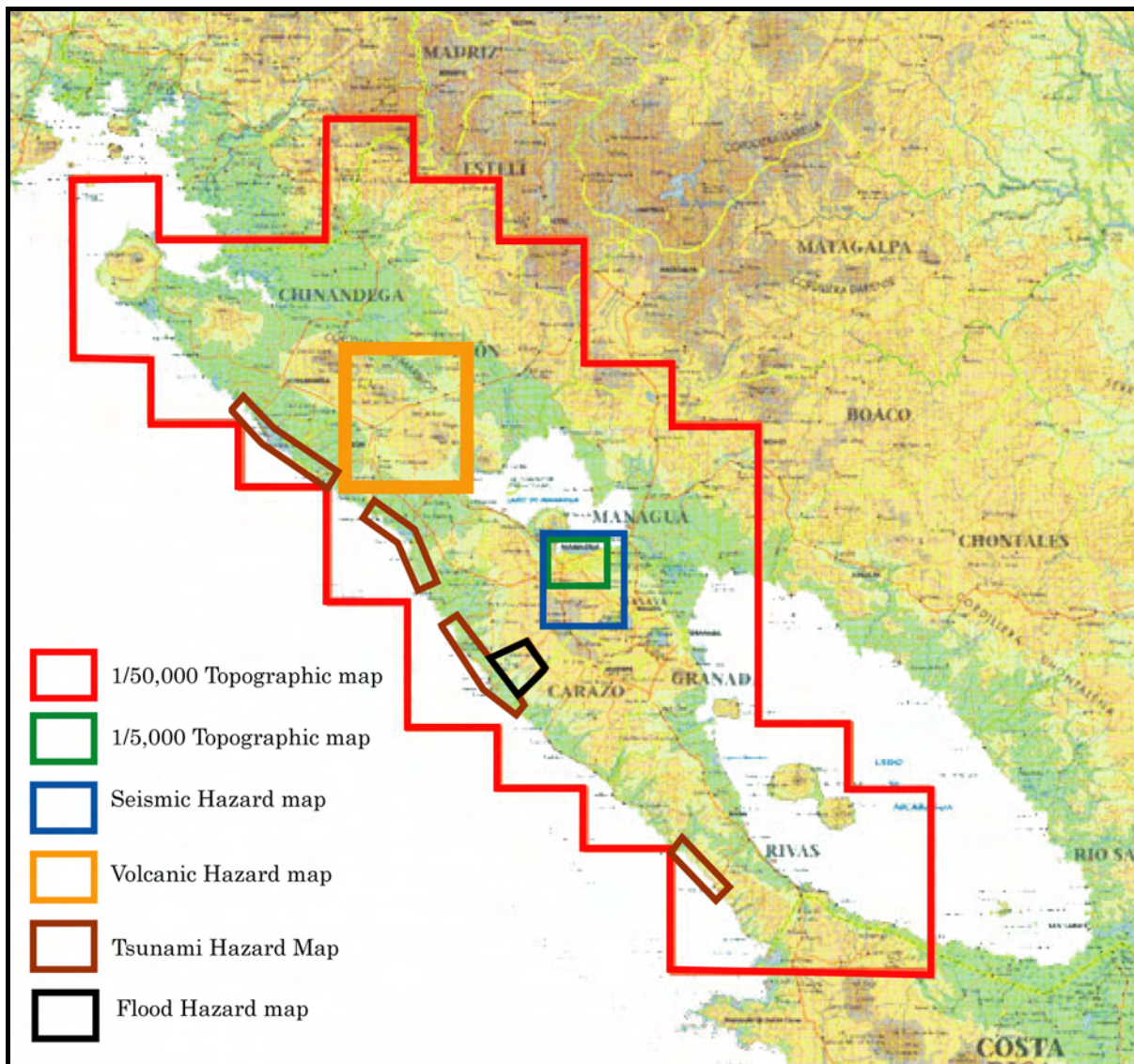


Figure 1-1 Study Area

1-4 Implementing Organizations

The Study was carried out through the joint efforts of the JICA Study Team and Nicaraguan counterpart personnel, who formed the Study implementing body. The JICA Study Team was comprised of members from Pasco Corporation and OYO International Corporation. The Nicaraguan counterparts were delegated from INETER.

In Nicaragua, INETER is the exclusively authorized agencies to prepare a national base map and hazard map for research and disaster management activities. Considering the necessity of involving relevant organization concerned in the Study, the Nicaraguan side established the Steering Committee consist of INETER, Ministry Foreign Affairs and SINAPRED. The responsibility of the Steering Committee was to advise to proper directions to INETER and the Study Team on appropriate technologies to be applied in the Study, and to provide relevant information.

Figure 1-2 shows the relationship of study organizations. The members of the Steering Committee are shown in Table 1-5.

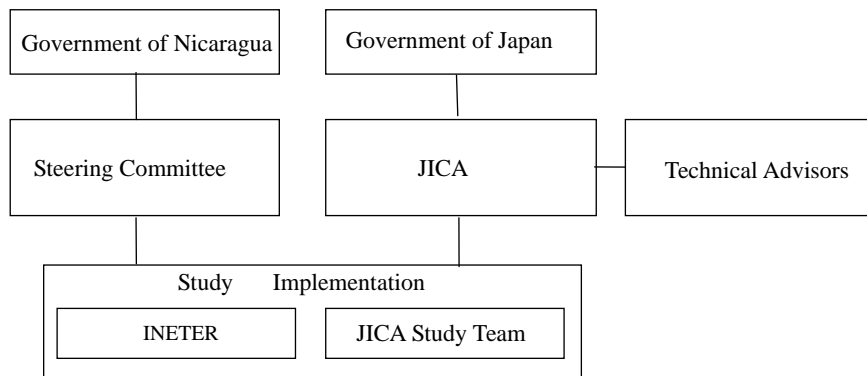


Figure 1-2 Study Organization

1-5 Study Team

The Japan International Cooperation Agency organized the Study Team and technical advisors for implementation of the Study. The members assigned are listed in Table 1-2 and 1-3.

Table 1-2 JICA Technical Advisors

Name	Affiliation
Kenji CHUJO	Infrastructure Development Institute
Kouisei OTOI	Infrastructure Development Institute
Tuneo TANAKA	Infrastructure Development Institute

Table 1-3 JICA Study Team

Name	Title	Remarks
Fujio ITO	Leader	Pasco Corporation
Yoshiaki OTOKU	Deputy Leader for Topographic mapping	Pasco Corporation
Osamu NISHII	Deputy Leader for Hazard Mapping	OYO International
Daikichi Nakajima	Supervisor of Field Work	Pasco Corporation
Kiyofumi TAMARI	Supervisor of Field Work	DMS
Minori ONAKA	Supervisor of Digital Plotting	DMS
Takeo MUTOH	Supervisor of Digital Plotting	Pasco Corporation
Awadh Kishor SAH	Supervisor of GIS database	Pasco Corporation
Hidetoshi KAKIUCHI	Supervisor of GIS analysis	Pasco Corporation
Choi Jaeyoung	Supervisor of GIS analysis	Pasco Corporation
Yoshinori Takahashi	Supervisor of GIS analysis	Pasco Corporation
Kozo YAMAYA	Supervisor of map symbolization	Pasco Corporation
Yoshitaka YAMAZAKI	Supervisor of Volcanic Hazard	OYO International
Toshihiro ASAHINA	Supervisor of Tsunami Hazard	Pasco Corporation
Toshiaki UDONO	Supervisor of Flood/Geomorphology	Pasco Corporation
Carlos VILLACIS	Simulation Technology Transfer	OYO International
Ikuo KATAYAMA	Special Technical Adviser for Hazard Mapping	Pasco Corporation
Hisashi MORI	Coordinator	Pasco Corporation

1-6 Host Agencies

1-6-1 INETER

According to the Scope of Work Mission, INETER acted since the beginning as the principal counterpart body.

In 1981, the National Geographic Institute of the Ministry of Defense, the National Meteorological Service back then Ministry of Transport and the Seismic Investigations Institute back then Ministry of Construction united and it INETER was established. Those days, INETER functioned as a very important technical and scientific organization of the country. It supplied fundamental information for the society in general (maps, land registry, meteorology, hydrology, geology, etc.) carrying out investigations and studies about the physical environment which promotes the social-economical development and at the same time it reduces vulnerability caused by natural disasters. It also carried out continuous security measures toward natural disasters.

The Department of Geodesy and Cartography, the Department of Hydrology and the Department of Geophysics were assigned as the counterparts of the project. The organization chart is shown in Figure 1-3. Major activities of the departments are as follows:

(1) Department of Geodesy and Cartography

The Department of Geodesy and Cartography consists of Geodesy Section, Photogrammetry Section and Cartography Section. It is in charge of administration, coordination, preparation of maps, operation and maintenance of the basic maps system of the territory, creation of thematic maps, operation and maintenance of the geodesic network of the national system of coordinates and coordination and implementation of the aerial photographs of the country. It is the body responsible for the creation of geo-space data using as a foundation the aerial photographs and the satellite images and it supplies information for the GIS. It also publishes its products as maps.

(2) Department of Hydrology

It participates in the observation network of the USGS through the meteorological satellite GEOS of the U.S.A. In the five stations of the country the water level of the river and its precipitation are noticeable. It is measured every 15 minutes and the information is sent every three hours. When the water level surpasses the alert level, the data is automatically sent every 15 minutes. There is a continuous observation of the water level in 23 stations nationally.

(3) Department of Geophysics

Department of Geophysics has been on duty for 24 hours monitoring of earthquake and strong motion, Tsunami, and volcanic activities by operating its observation network consisting from 57 stations with using Telemetric, Radio, and Internet, and is working as an important base within National Disaster Prevention and Mitigation Information System. When an earthquake the magnitude of which is larger than 7.0 should occur, Tsunami Alert System is activated and releases timely information to responsible National organizations. The eruptions and release of hazardous gases of active volcanoes San Cristobal, Telica, and Cerro Negro in the northern area and Concepcion in the southern area are continuously monitored by web cameras installed respectively in Leon and Isle of Ometepe. These hazard related information will be transmitted to hazard mitigation related Governmental and Public Institutions through wire lines directly connected with the National Agency for Civil Defense (Defensa Civil). For this obligation, the department is operated by the personnel in charge of research, observation, and maintenance.

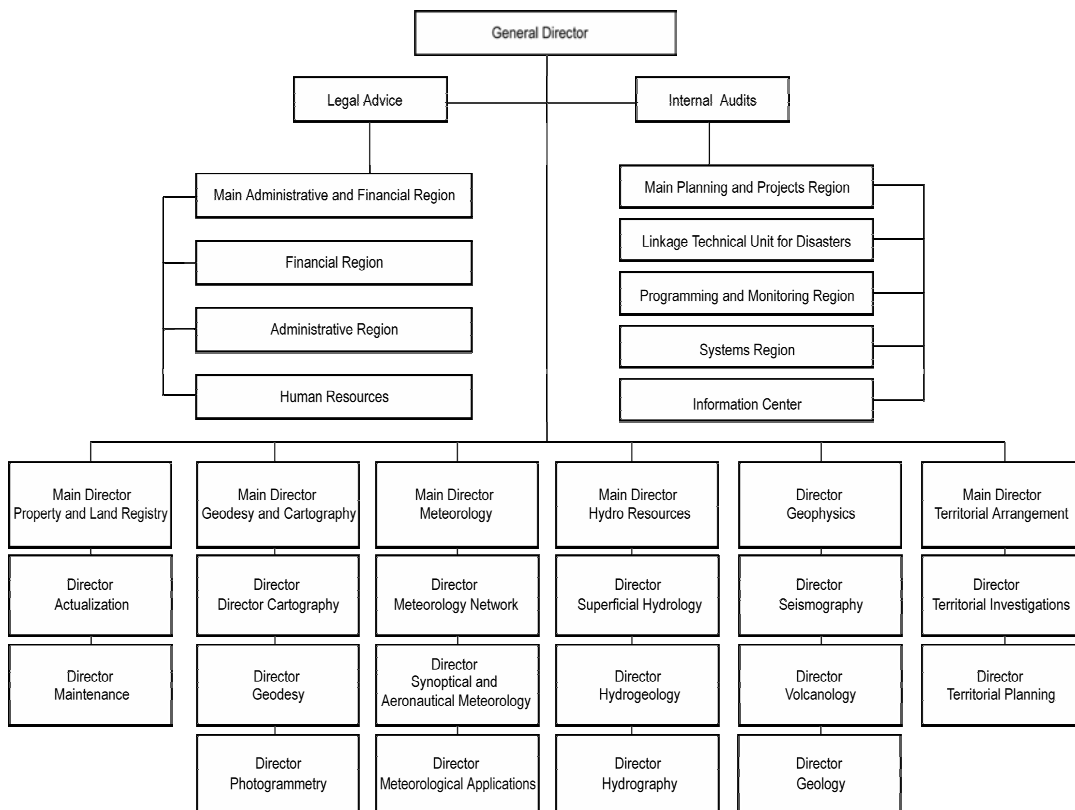


Figure 1-3 Organization Chart

Table 1-4 Member Lists of Main Counterparts Agency

Name	Title
Claudio Gutiérrez Huete	Executive Director of INETER
Pedro Miguel Vargas Carvajal	General Director of Geodesy and Cartography
Gonzalo Medina Pérez	Technical Director of Geodesy and Cartography
Isidro Jarquín Vélez	Director of Cartography
Ramón Avilés	Director of Geodesy
Josué Donado Figueroa	Director of Photogrammetry
Wilfried Strauch	General Director of Geophysics
Manuel Traña	Director of Vulcanology
Martha Navarro	Vulcanologist
Carlos Guzmán	Superficial Seismologist
Guillermo Chávez	GIS Specialist
Luis Palacios Ruíz	General Director of Hydro Resources
Isaías Montoya	Technical Director of Superficial Hydrology
Jamil Robleto	Forecaster Hydrologist
Sergio Cordonero	Director of Hydrology

1-6-2 Organizing Steering Committee

In response to request from the Study Team, INETER side agreed to set up the Steering Committee consisting of the Executive Directors of INETER, SINAPRED (Systema Nacional de Mitigación y Prevención de Desastres) and a representative of the Ministry of Foreign Affairs for the Study. The first meeting was held in the beginning of February 2004, the second meeting was held on August 18, 2004. In the first meeting, the Study Team and the counterpart reported results of investigation in the field to the committee. The Study Team reported the progress of the Study during the second meeting also. Representative of Managua City and ENACAL participated in the third meeting held on February 22, 2005. The fourth meeting was held on November 21, 2006. During the final meeting, which was held on August 21, 2006, the final report was presented, and the report was accepted.

Table 1-5 Steering Committee Members

Name	Title
Claudio Gutiérrez Huete	Executive Director of INETER
Jerónimo Giuston Robelo/ Geronimo Giusto	Executive Secretary of SINAPRED
Isolda Frixione Miranda/ Miriam Fonseca	General Director of Bilateral Management of Ministry of Foreign Affairs

1-7 Work Flow of the Study

Work Plan of the Four-Year Study is shown in Figure 1-4.

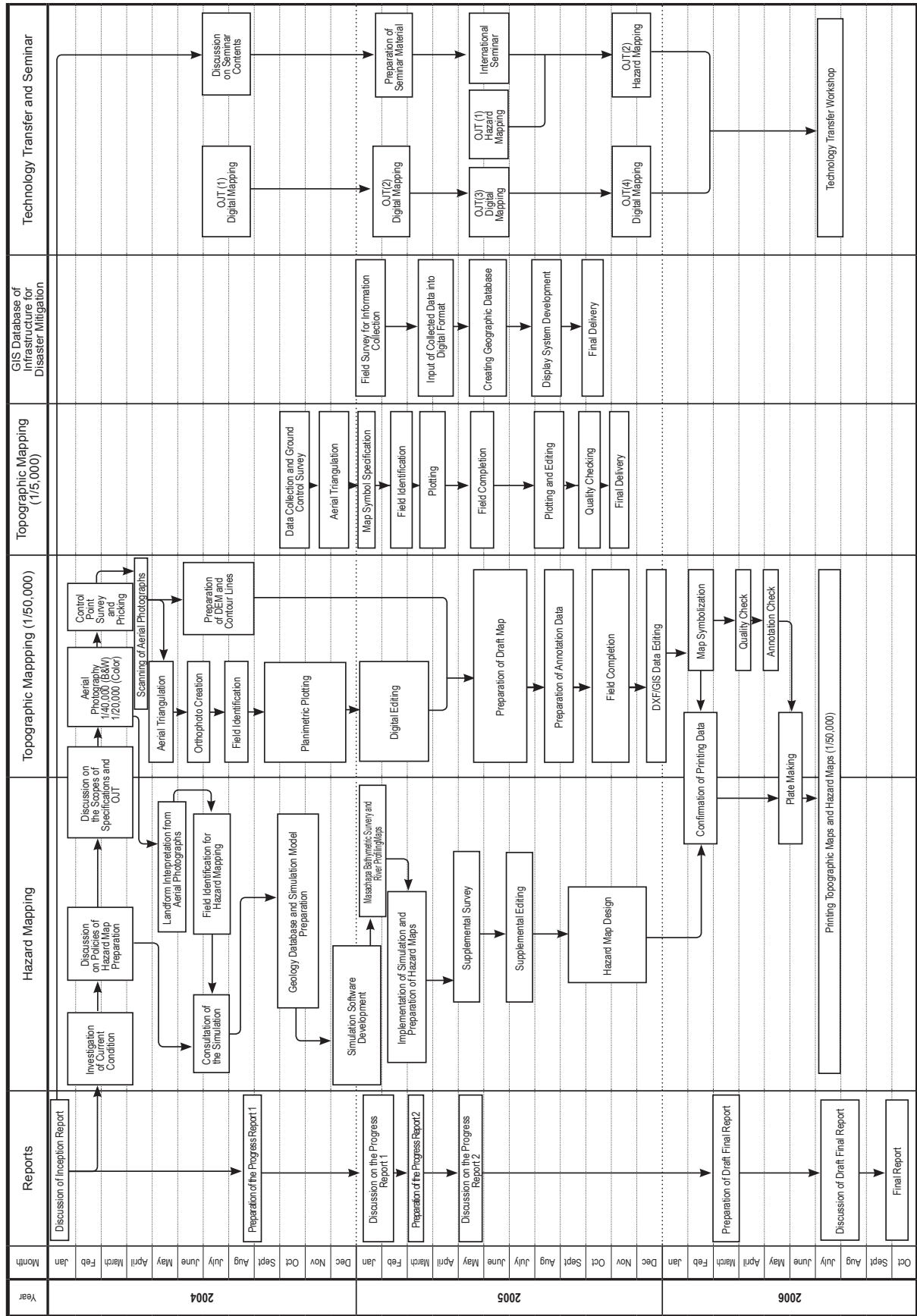


Figure 1-4 Study Flow Chart

1-8 Final Products

The following is a list of output.

Table 1-6 Outputs

	Item	Number	Note
(1)	Study Report		
1)	Inception Report (English)	20 copies	
	Inception Report (Spanish)	20 copies	
2)	Progress Report 1 (English)	20 copies	
	Progress Report 1 (Spanish)	20 copies	
3)	Progress Report 2 (English)	20 copies	
	Progress Report 2 (Spanish)	20 copies	
4)	Draft Final Report		
	Main Report (English)	20 copies	
	Summary (English)	20 copies	
	Main Report (Spanish)	20 copies	
	Summary (Spanish)	20 copies	
5)	Final Report		
	Main Report (English)	20 copies	
	Summary (English)	20 copies	
	Main Report (Spanish)	20 copies	
	Summary (Spanish)	20 copies	
	CD-ROM	2 Sets	
	Manuals	2 Sets	CD-ROM (.pdf)
(2)	Study Results		
1)	Aerial photography		
	Negative film	1 set	1/40,000 B&W; 1/20,000 color
	Digital Data File	1 set	1/40,000 B&W
	Contact print photographs	1 set	1/40,000; 1/20,000 color
	Index map	1 set	1/40,000; 1/20,000 color
2)	Results of Field Survey	1 set	
3)	Results of aerial triangulation	1 set	
4)	Plate film for Printing		
	Film for Topographic Maps	1 set	1/50,000
	Film for Hazard Maps	1 set	1/50,000
5)	Digital Data File		
	Topographic Maps for Managua city and GIS Database	2 set	1/5,000
	Topographic Maps and GIS Database	2 set	1/50,000
	GIS Database of Infrastructures for Disaster Mitigation	2 set	1/250,000
	Hazard Maps	2 set	1/50,000
6)	Printing Maps		
	Topographic Maps	500 copy each for 60 sheet	1/50,000
	Earthquake Hazard Maps	500 copy each for 5 scenario	1/125,000
	Volcano Hazard Maps	200 copy for Lava flow	1/100,000
		200 copy for Pyroclastic flow, lahar and bomb	1/100,000
		200 copy for Tephra fall	1/200,000
	Flood Hazard Maps	100 sets	1/3,500-1/7,000
	Tsunami Hazard Maps	a) 125 copy for Corint b) 55 copy for Puerto Sandino c) 45 copy for Masachapa d) 75 copy for San Juan del Sur	1/50,000