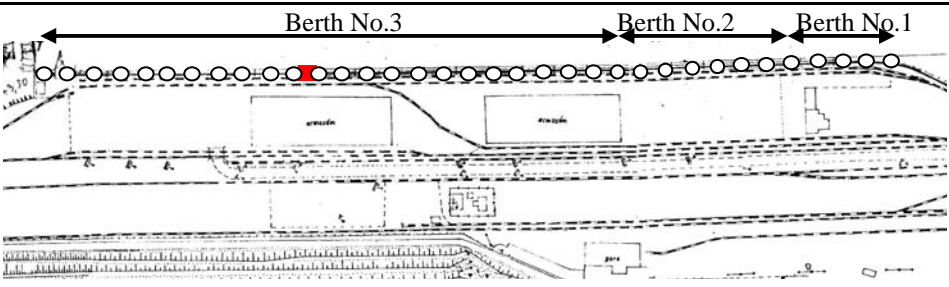


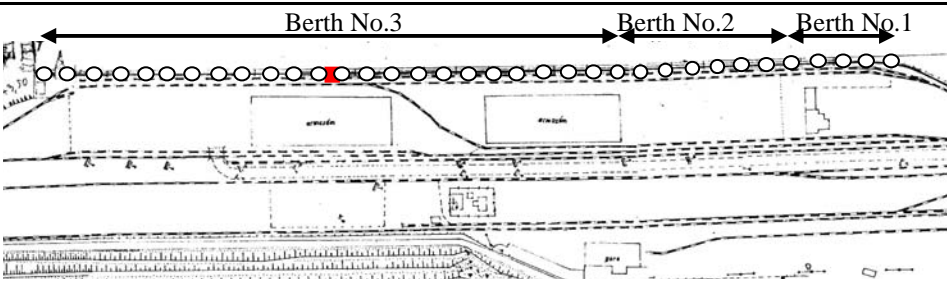
**THE STUDY ON URGENT REHABILITATION PROGRAM OF PORTS IN THE REPUBLIC OF ANGOLA**

<b>Facility ID</b>	Na -02 -012	<b>Survey Date</b>	2005/05/17, 10/12
<b>Port Name</b>	Namibe	<b>Category</b>	Coping Concrete
<b>Year Constructed</b>	1953-1957		
<b>Maintenance Record</b>	unknown		
<b>Facility Description</b>	Berth No.3 From Bollard No.11 to No.12 A crane socket is found.		
<b>Existing Condition</b>	The edges of the coping concrete are chipped off throughout the length of interval.		
<b>Structural Condition Assessment</b>	<b>Grade 2</b>		
	The facility is in structurally bad condition. It will become the object of rehabilitation plan.		
<b>Location</b>			

**Photos**



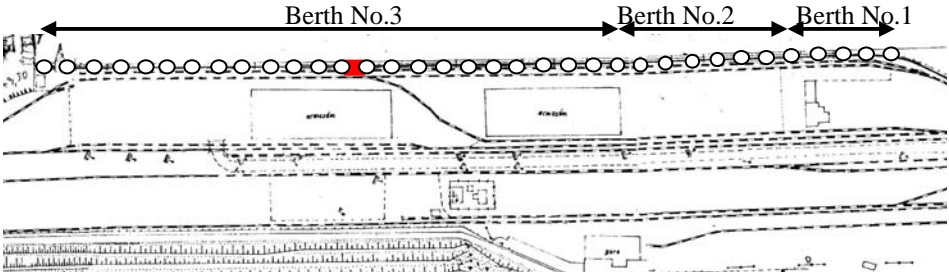
## THE STUDY ON URGENT REHABILITATION PROGRAM OF PORTS IN THE REPUBLIC OF ANGOLA

<b>Facility ID</b>	Na -02 -013	<b>Survey Date</b>	2005/05/17, 10/12
<b>Port Name</b>	Namibe	<b>Category</b>	Coping Concrete
<b>Year Constructed</b>	1953-1957		
<b>Maintenance Record</b>	unknown		
<b>Facility Description</b>	Berth No.3 From Bollard No.12 to No.13 A sewage discharge point is found.		
<b>Existing Condition</b>	The edges of the coping concrete are chipped off throughout the length of interval.		
<b>Structural Condition Assessment</b>	<b>Grade 2</b>		
	The facility is in structurally bad condition. It will become the object of rehabilitation plan.		
<b>Location</b>			

## Photos



**THE STUDY ON URGENT REHABILITATION PROGRAM OF PORTS IN THE REPUBLIC OF ANGOLA**

<b>Facility ID</b>	Na -02 -014	<b>Survey Date</b>	2005/05/17, 10/12
<b>Port Name</b>	Namibe	<b>Category</b>	Coping Concrete
<b>Year Constructed</b>	1953-1957		
<b>Maintenance Record</b>	unknown		
<b>Facility Description</b>	Berth No.3 From Bollard No.13 to No.14 An water supply bulb is found.		
<b>Existing Condition</b>	The edges of the coping concrete are chipped off throughout the length of interval.		
<b>Structural Condition Assessment</b>	<b>Grade 2</b>		
	The facility is in structurally bad condition. It will become the object of rehabilitation plan.		
<b>Location</b>			

**Photos**



**THE STUDY ON URGENT REHABILITATION PROGRAM OF PORTS IN THE REPUBLIC OF ANGOLA**

<b>Facility ID</b>	Na -02 -015	<b>Survey Date</b>	2005/05/17, 10/12
<b>Port Name</b>	Namibe	<b>Category</b>	Coping Concrete
<b>Year Constructed</b>	1953-1957		
<b>Maintenance Record</b>	unknown		
<b>Facility Description</b>	Berth No.3 From Bollard No.14 to No.15 A crane socket is found.		
<b>Existing Condition</b>	The edges of the coping concrete are chipped off throughout the length of interval.		
<b>Structural Condition Assessment</b>	<b>Grade 2</b>		
	The facility is in structurally bad condition. It will become the object of rehabilitation plan.		
<b>Location</b>			

**Photos**



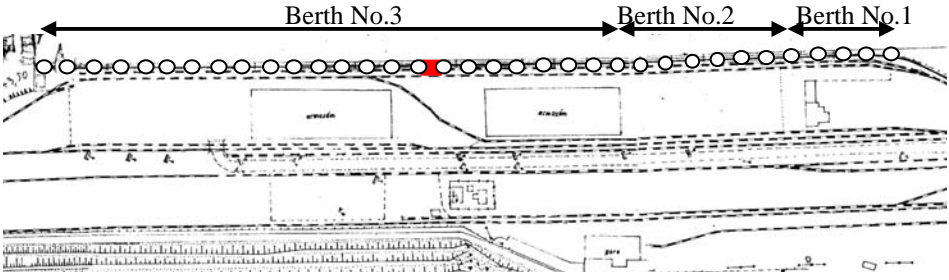
**THE STUDY ON URGENT REHABILITATION PROGRAM OF PORTS IN THE REPUBLIC OF ANGOLA**

<b>Facility ID</b>	Na -02 -016	<b>Survey Date</b>	2005/05/17, 10/12
<b>Port Name</b>	Namibe	<b>Category</b>	Coping Concrete
<b>Year Constructed</b>	1953-1957		
<b>Maintenance Record</b>	unknown		
<b>Facility Description</b>	Berth No.3 From Bollard No.15 to No.16		
<b>Existing Condition</b>	The edges of the coping concrete are chipped off throughout the length of interval. There can be seen lack of the coping concrete (encircled part in the photo hereunder).		
<b>Structural Condition Assessment</b>	<b>Grade 2</b>		
	The facility is in structurally bad condition. It will become the object of rehabilitation plan.		
<b>Location</b>			

**Photos**



**THE STUDY ON URGENT REHABILITATION PROGRAM OF PORTS IN THE REPUBLIC OF ANGOLA**

<b>Facility ID</b>	Na -02 -017	<b>Survey Date</b>	2005/05/17, 10/12
<b>Port Name</b>	Namibe	<b>Category</b>	Coping Concrete
<b>Year Constructed</b>	1953-1957		
<b>Maintenance Record</b>	unknown		
<b>Facility Description</b>	Berth No.3 From Bollard No.16 to No.17 A sewage discharge point, an water supply bulb and crane socket are found.		
<b>Existing Condition</b>	The edges of the coping concrete are chipped off throughout the length of interval.		
<b>Structural Condition Assessment</b>	<b>Grade 2</b>		
	The facility is in structurally bad condition. It will become the object of rehabilitation plan.		
<b>Location</b>			

**Photos**



**THE STUDY ON URGENT REHABILITATION PROGRAM OF PORTS IN THE REPUBLIC OF ANGOLA**

<b>Facility ID</b>	Na -02 -018	<b>Survey Date</b>	2005/05/17, 10/12
<b>Port Name</b>	Namibe	<b>Category</b>	Coping Concrete
<b>Year Constructed</b>	1953-1957		
<b>Maintenance Record</b>	unknown		
<b>Facility Description</b>	Berth No.3 From Bollard No.17 to No.18 A crane socket is found.		
<b>Existing Condition</b>	The edges of the coping concrete are chipped off throughout the length of interval.		
<b>Structural Condition Assessment</b>	<b>Grade 2</b>		
	The facility is in structurally bad condition. It will become the object of rehabilitation plan.		
<b>Location</b>			

**Photos**



**THE STUDY ON URGENT REHABILITATION PROGRAM OF PORTS IN THE REPUBLIC OF ANGOLA**

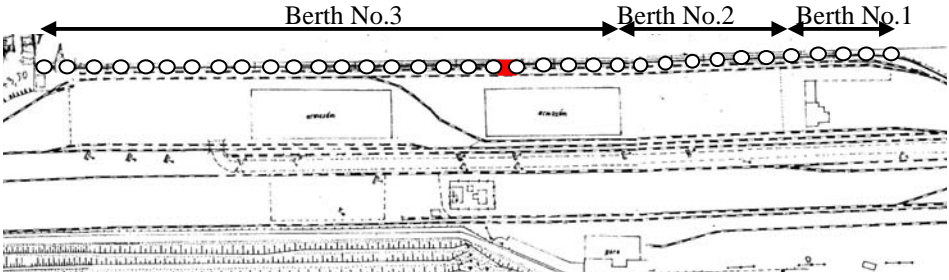
<b>Facility ID</b>	Na -02 -019	<b>Survey Date</b>	2005/05/17, 10/12
<b>Port Name</b>	Namibe	<b>Category</b>	Coping Concrete
<b>Year Constructed</b>	1953-1957		
<b>Maintenance Record</b>	unknown		
<b>Facility Description</b>	Berth No.3 From Bollard No.18 to No.19 A crane socket is found.		
<b>Existing Condition</b>	The edges of the coping concrete are chipped off throughout the length of interval. There can be seen some broken parts of the coping concrete (encircled part in the photo hereunder).		
<b>Structural Condition Assessment</b>	<b>Grade 2</b>		
	The facility is in structurally bad condition. It will become the object of rehabilitation plan.		
<b>Location</b>			

**Photos**

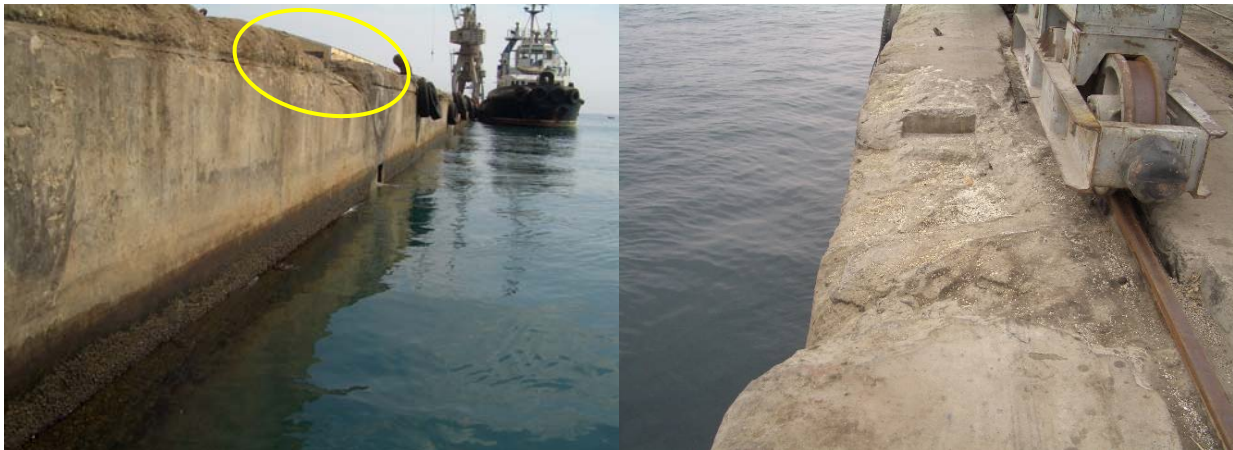




**THE STUDY ON URGENT REHABILITATION PROGRAM OF PORTS IN THE REPUBLIC OF ANGOLA**

<b>Facility ID</b>	Na -02 -020	<b>Survey Date</b>	2005/05/17, 10/12
<b>Port Name</b>	Namibe	<b>Category</b>	Coping Concrete
<b>Year Constructed</b>	1953-1957		
<b>Maintenance Record</b>	unknown		
<b>Facility Description</b>	Berth No.3 From Bollard No.19 to No.20		
<b>Existing Condition</b>	The edges of the coping concrete are chipped off throughout the length of interval. There can be seen lack of the coping concrete (encircled part in the photo hereunder).		
<b>Structural Condition Assessment</b>	<b>Grade 2</b>		
	The facility is in structurally bad condition. It will become the object of rehabilitation plan.		
<b>Location</b>			

**Photos**



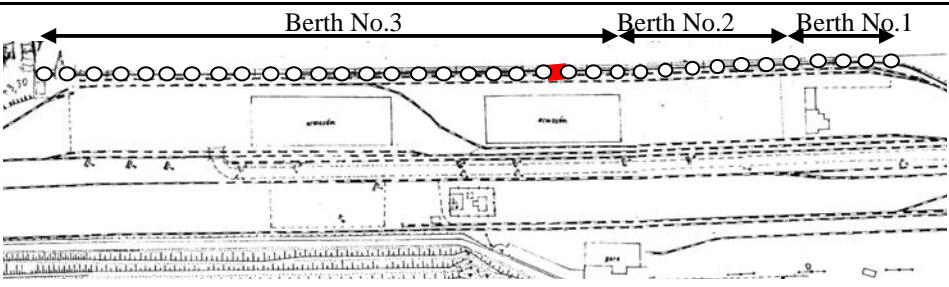
**THE STUDY ON URGENT REHABILITATION PROGRAM OF PORTS IN THE REPUBLIC OF ANGOLA**

<b>Facility ID</b>	Na -02 -021	<b>Survey Date</b>	2005/05/17, 10/12
<b>Port Name</b>	Namibe	<b>Category</b>	Coping Concrete
<b>Year Constructed</b>	1953-1957		
<b>Maintenance Record</b>	unknown		
<b>Facility Description</b>	Berth No.3 From Bollard No.20 to No.21 An water supply bulb and a crane socket is found.		
<b>Existing Condition</b>	The edges of the coping concrete are chipped off throughout the length of interval.		
<b>Structural Condition Assessment</b>	<b>Grade 2</b>		
	The facility is in structurally bad condition. It will become the object of rehabilitation plan.		
<b>Location</b>			

**Photos**



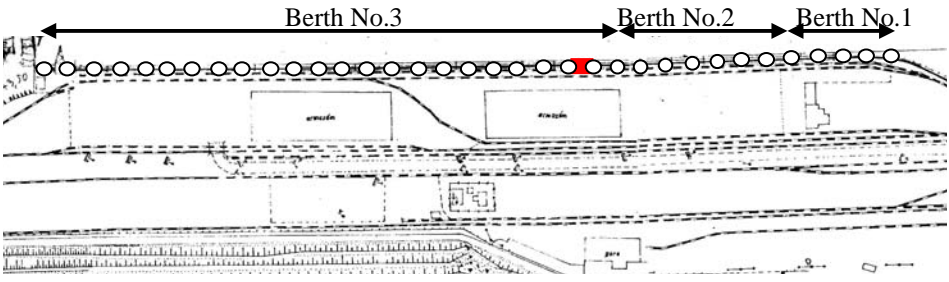
**THE STUDY ON URGENT REHABILITATION PROGRAM OF PORTS IN THE REPUBLIC OF ANGOLA**

<b>Facility ID</b>	Na -02 -022	<b>Survey Date</b>	2005/05/17, 10/12
<b>Port Name</b>	Namibe	<b>Category</b>	Coping Concrete
<b>Year Constructed</b>	1953-1957		
<b>Maintenance Record</b>	unknown		
<b>Facility Description</b>	Berth No.3 From Bollard No.21 to No.22 A crane socket is found.		
<b>Existing Condition</b>	The edges of the coping concrete are chipped off throughout the length of interval.		
<b>Structural Condition Assessment</b>	<b>Grade 2</b>		
	The facility is in structurally bad condition. It will become the object of rehabilitation plan.		
<b>Location</b>			

**Photos**



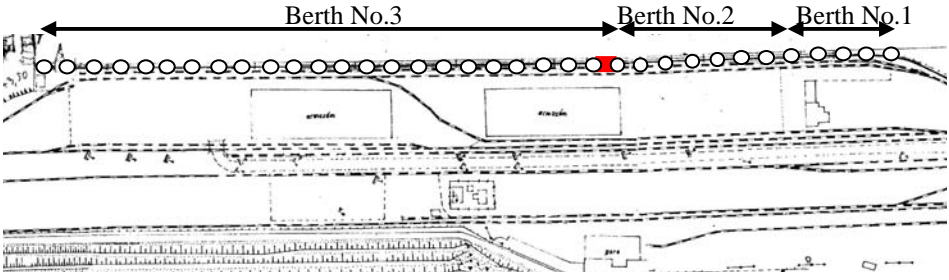
**THE STUDY ON URGENT REHABILITATION PROGRAM OF PORTS IN THE REPUBLIC OF ANGOLA**

<b>Facility ID</b>	Na -02 -023	<b>Survey Date</b>	2005/05/17, 10/12
<b>Port Name</b>	Namibe	<b>Category</b>	Coping Concrete
<b>Year Constructed</b>	1953-1957		
<b>Maintenance Record</b>	unknown		
<b>Facility Description</b>	Berth No.3 From Bollard No.22 to No.23 A sewage discharge point and a crane socket are found.		
<b>Existing Condition</b>	The edges of the coping concrete are chipped off throughout the length of interval.		
<b>Structural Condition Assessment</b>	<b>Grade 2</b>		
	The facility is in structurally bad condition. It will become the object of rehabilitation plan.		
<b>Location</b>			

**Photos**



**THE STUDY ON URGENT REHABILITATION PROGRAM OF PORTS IN THE REPUBLIC OF ANGOLA**

<b>Facility ID</b>	Na -02 -024	<b>Survey Date</b>	2005/05/17, 10/12
<b>Port Name</b>	Namibe	<b>Category</b>	Coping Concrete
<b>Year Constructed</b>	1953-1957		
<b>Maintenance Record</b>	unknown		
<b>Facility Description</b>	Berth No.3 From Bollard No.23 to No.24 A crane socket is found.		
<b>Existing Condition</b>	The edges of the coping concrete are chipped off throughout the length of interval.		
<b>Structural Condition Assessment</b>	<b>Grade 2</b>		
	The facility is in structurally bad condition. It will become the object of rehabilitation plan.		
<b>Location</b>			

**Photos**



**THE STUDY ON URGENT REHABILITATION PROGRAM OF PORTS IN THE REPUBLIC OF ANGOLA**

<b>Facility ID</b>	Na -02 -025	<b>Survey Date</b>	2005/05/17, 10/12
<b>Port Name</b>	Namibe	<b>Category</b>	Coping Concrete
<b>Year Constructed</b>	1953-1957		
<b>Maintenance Record</b>	unknown		
<b>Facility Description</b>	Berth No.2 From Bollard No.24 to No.25 A sewage discharge point and an water supply bulb are found.		
<b>Existing Condition</b>	The edges of the coping concrete are chipped off throughout the length of interval. There can be seen some broken parts of the coping concrete (encircled part in the photo hereunder).		
<b>Structural Condition Assessment</b>	<b>Grade 2</b>		
	The facility is in structurally bad condition. It will become the object of rehabilitation plan.		
<b>Location</b>			

**Photos**

