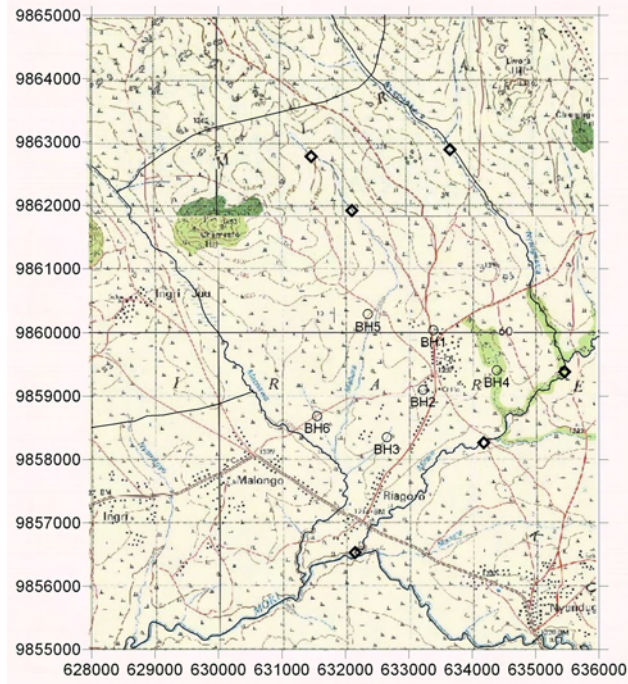
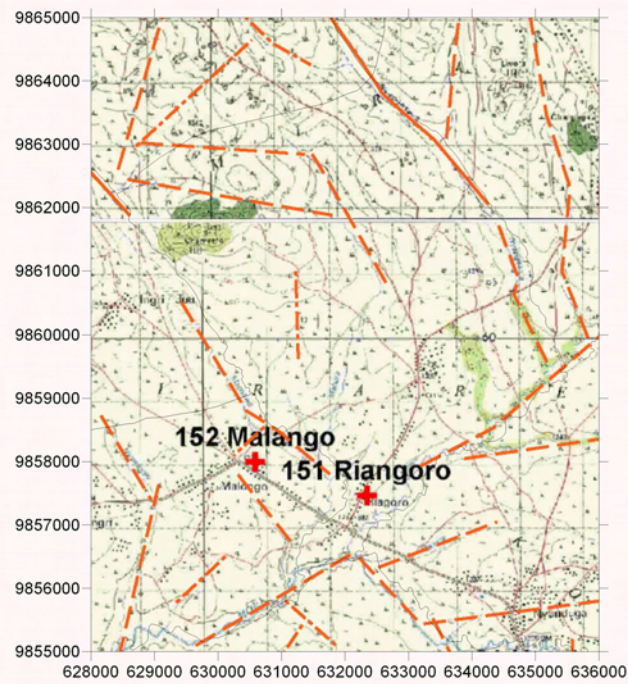


Survey Date	District	ID	Village	Population	Access	Topographic, Geological Overview	Existing Water Source					Alternative Bore Hole Location					Attended Villager		
							Condition of Water Source	Type of Source	Coordination	Function	Seasonal	Remarks	BH Number	Coordination	Description of Selected point (Geology, Topography, Structure)	Yield (probability of yielding -well)		Remarks	
2006/2/21	Tarime	151	Ryagoro	2,902	40 min from Tarime town through the rough road in good condition	Mainly occupied by hills and ridges with narrow valleys. Lineament of NE-SW direction is abundant. Shist and shales of Nyanzan Series.	5 stream ponds (hand dug open well) and streams. Mori river is the only source of water at dry season.							BH1	633432 9860056	Flatland with small depression at the close to the hill top	C	Req. RS	VC: Agalia Ernst, VEO: Okechi Osem.
														BH2	633269 9859114	Almost flat hill side. Laterite (ferocrete?) and Weathered quartzitic rocks. Side of school.	C	Req. RS	
														BH3	632697 9858368	Depression at the the small valley. Yellowish weathered rocks and black soil at the top.	B		
														BH4	634432 9859426	Widw valley center. Occupied by joint rich shist and shale with granitic vein intrusion.	B		
														BH5	632400 9860300	On the minor lineament.	A	Road rehabilitation will be required.	
														BH6	631600 9858700	On the clear lineament	B	Road rehabilitation will be required.	



Groundwater Development Plan



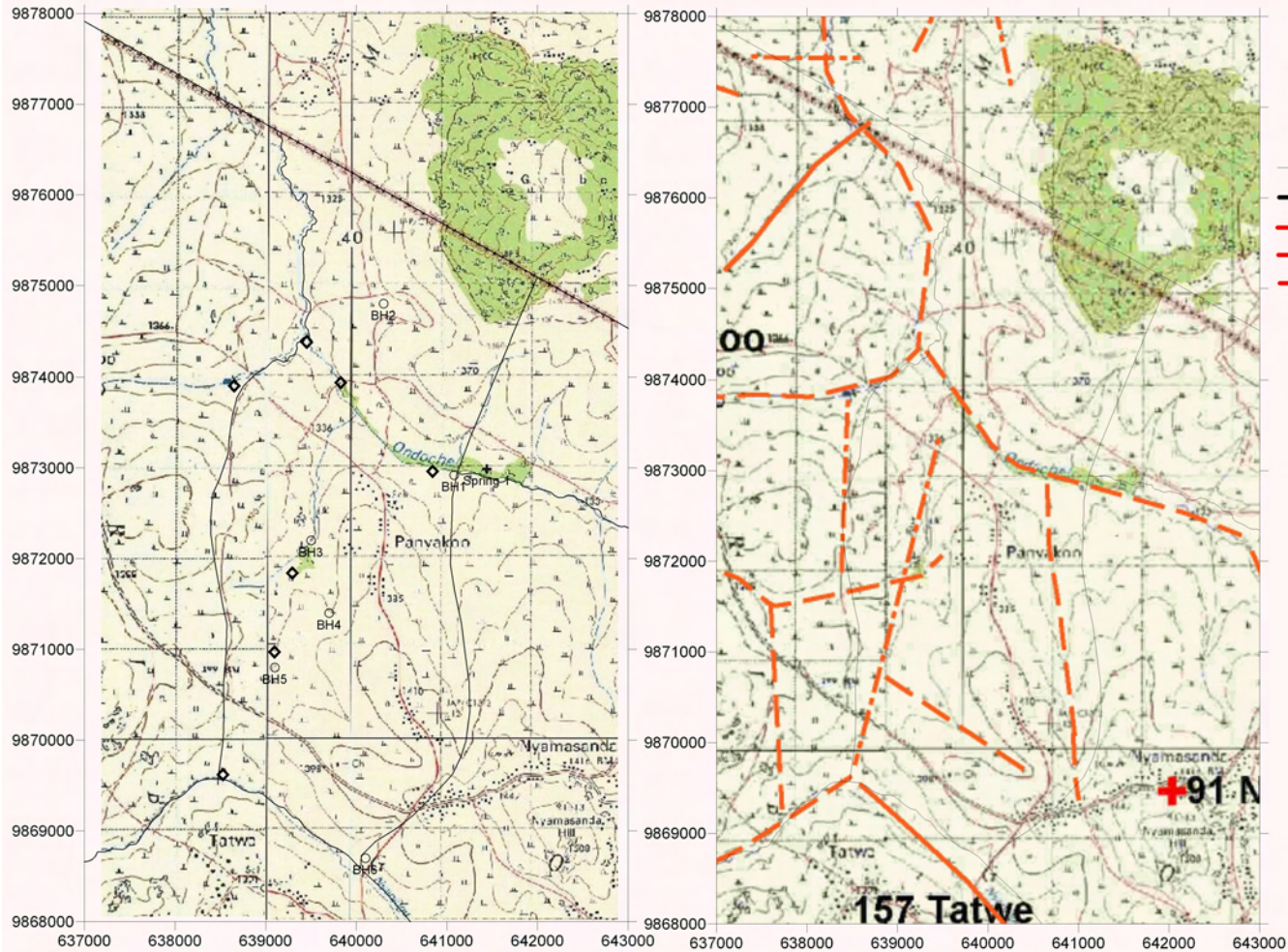
Lineament Map

LEGEND

- Existing Water Source
- Alternative Bore Hole Site
- Recommended Site for the Drilling
- Village Boundary from Statics Office (2004)
- Estimated Village Boundary at Survey (March 2006)
- Clear Lineament from Aerial Photograph Interpretation
- Minor Lineament from Aerial Photograph Interpretation
- Trace Lineament from Aerial Photograph Interpretation
- Past Drilling Records (source DDCA, SIDA)  
D = Depth (GL-m), SWL = Static Water Level (GL-m), Yield = m3/h, WS = Water Struck Depth (GL-m)



Village	Population	Access	Topographic, Geological Overview	Existing Water Source						Alternative Bore Hole Location							
				Condition of Water Source	Type of Source	Coordination	Function	Seasonal	Remarks	BH Number	Coordination	Description of Selected point (Geology, Topography, Structure)	score (probability of yielding yield)	Remarks	Attended Villager		
Nyamsi	1,766	1 h from the Tarime town through the rough road in good condition	Consist of hills and ridges of granite inselberg with several valleys (lineament).	2 permanent springs, and 6 seasonal springs.	Spring 1	641440	9872988	-	no	Clear water with some bubble. Never dries up, and the water seems to be increase at the dry season: according to the villagers.	BH1	641079	9872922	At river Ondoche. On the lineament. Lower side of the spring and altered granite outcrops can observed in the valley.	A	Road rehabilitation will be required.	Due to the absence of VC and the long walking distance to the permanent spring, location of the BH was selected on the map with advice of Chairman of Ward: Ossoro Adrian
											BH2	640300	9874800	On the lineament. Downside of inselberg.	B	Road rehabilitation will be required.	
											BH3	639500	9872200	On the minor lineament	B	Road rehabilitation will be required.	
											BH4	639700	9871400	On the minor lineament	C	Road rehabilitation will be required.	
											BH5	639100	9870800	Intersection of two lineament.	B	Road rehabilitation will be required.	
											BH6	640100	9868700	At the side of the river.	A	Road rehabilitation will be required.	

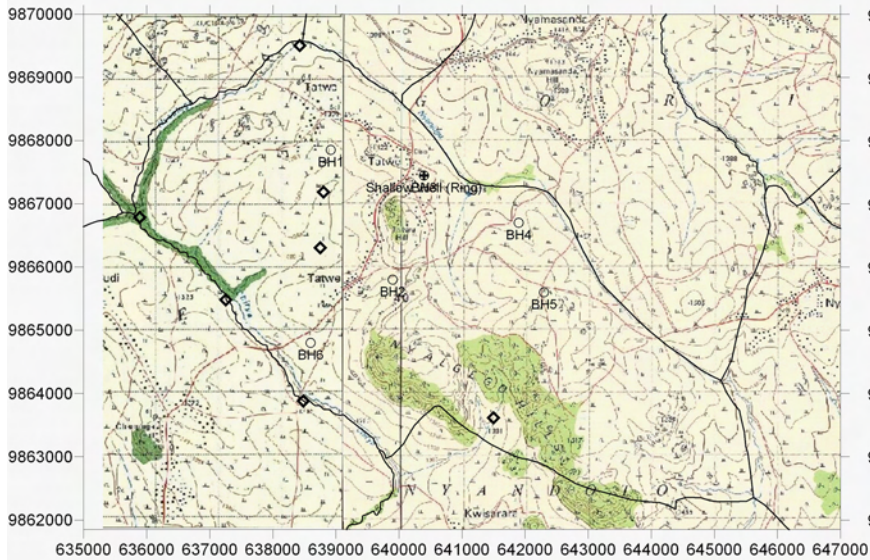


**LEGEND**

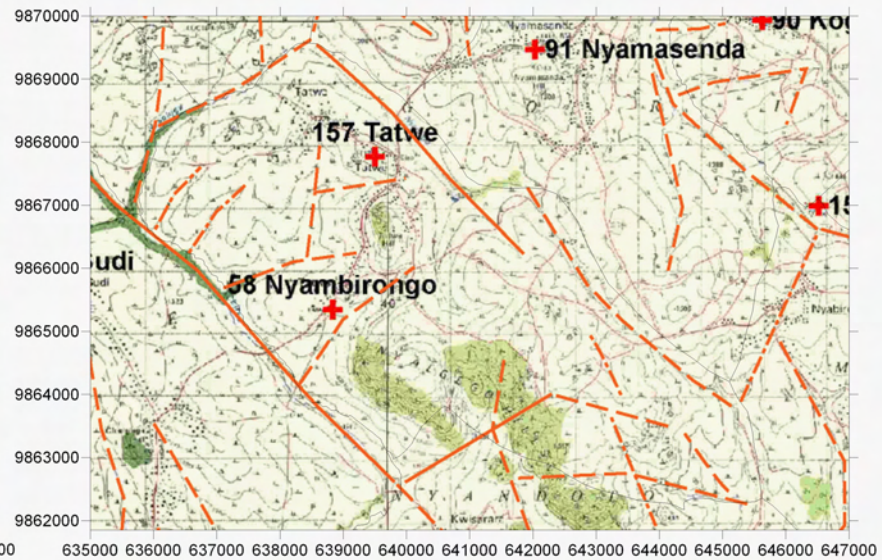
- +** Existing Water Source
- Alternative Bore Hole Site
- ◇** Recommended Site for the Drilling
- Village Boundary from Statics Office (2004)
- - -** Estimated Village Boundary at Survey (March 2006)
- Clear Lineament from Aerial Photograph Interpretation
- - -** Minor Lineament from Aerial Photograph Interpretation
- · - · -** Trace Lineament from Aerial Photograph Interpretation
- Past Drilling Records (source DDCA, SIDA)  
 D = Depth (GL-m)  
 SWL = Static Water Level (GL-m), Yield = m3/h,  
 WS = Water Struck Depth (GL-m)



Survey Date	District	ID	Village	Population	Access	Topographic, Geological Overview	Condition of Water Source	Existing Water Source				Remarks	BH Number	Alternative Bore Hole Location			Remarks	Attended Villager		
								Type of Source	Coordination	Function	Seasonal			Description of Selected point (Geology, Topography, Structure)	Score (probability of yielding well)					
2006/3/21	Tarime	157	Tatwe	4,087	1 h from Tarime town through the rough road in good condition	Consist of hills and ridges of granite inselberg with several valleys (lineament).	2 permanent springs, and 6 seasonal springs.	Spring 1			-	no	Intersection of two major valley.	BH1	638920	9867850	At the upper side of small valley with depression. Wet area. Granitic sand and dark grey soil.	B		Chairman of Ward: Ossoro Adrian, VC
								Shallow Well (Ring)	640397	9867446	no	yes	The well was not completed by the contractor, and left as it is since 1960s.	BH2	639900	9865800	On the lineament. Extension of col between granite inselberg.	A	Road rehabilitation will be required.	
														BH3	640397	9867446	At the center of wide valley. Laterites and granitic sand at the slope. Close to the ring well.	B	Road rehabilitation will be required.	
														BH4	641900	9866700	At the side of the road of a valley with clear lineament.	B	Road rehabilitation will be required.	
														BH5	642300	9865600	Junction of road in the village. Lineament at col structure.	B	Road rehabilitation will be required.	
														BH6	638600	9864800	Low end of a narrow valley.	B	Road rehabilitation will be required.	



Groundwater Development Plan



Lineament Map

LEGEND

- Existing Water Source
- Alternative Bore Hole Site
- Recommended Site for the Drilling
- Village Boundary from Statics Office (2004)
- Estimated Village Boundary at Survey (March 2006)
- Clear Lineament from Aerial Photograph Interpretation
- Minor Lineament from Aerial Photograph Interpretation
- Trace Lineament from Aerial Photograph Interpretation
- Past Drilling Records (source DDCA, SIDA)  
D = Depth (GL-m), SWL = Static Water Level (GL-m), Yield = m<sup>3</sup>/h, WS = Water Struck Depth (GL-m)