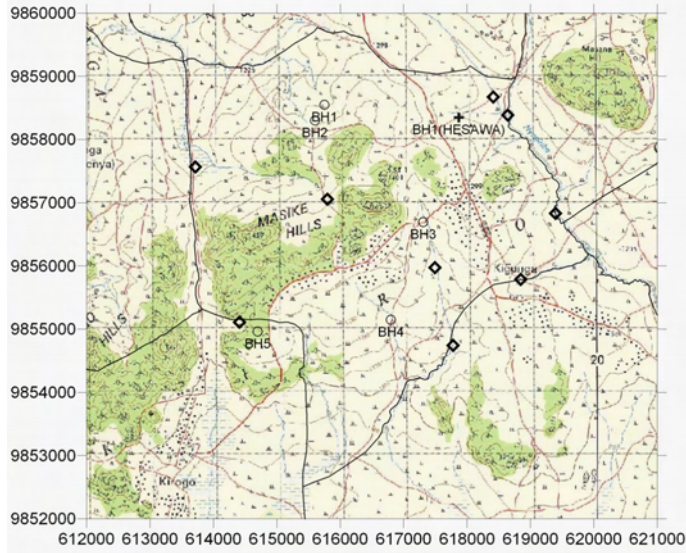
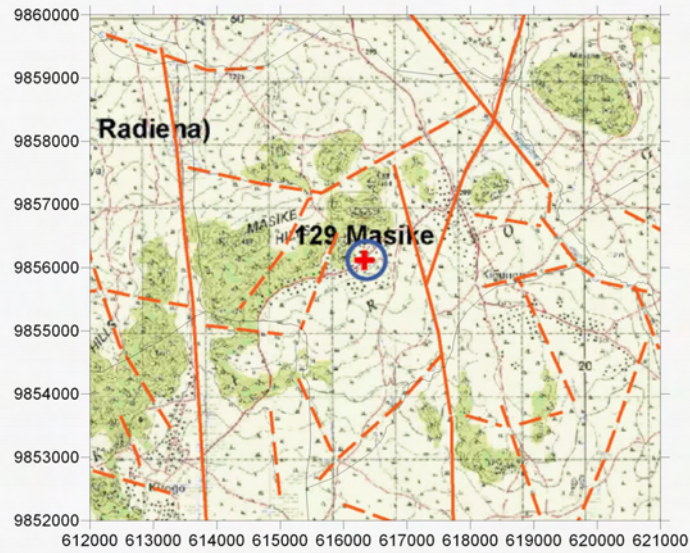


Survey Date	District	ID	Village	Population	Access	Topographic, Geological Overview	Condition of Water Source	Existing Water Source					Alternative Bore Hole Location					Attended Villager		
								Type of Source	Coordination	Function	Seasonal	Remarks	BH Number	Coordination	Description of Selected point (Geology, Topography, Structure)	Score (probability of yielding well)	Remarks			
2006/3/22	Tarime	129	Masike	2,552	1 h from Tarime town through the well maintained rough road. The Village center is 10 min through bumpy road.	Large and steep granite inserberg is common. Characterized by hilly terrain and narrow valley.	2 BH and 5 hand dug open wells and some stream ponds. In dry season, no water source except 1BH, and the villagers depend on the water of the Lake Victoria.	BH 1	617869	9858350	no	no	The BH was constructed by HESAWA in 1998, and the depth of 120 m (about). The pump is not functioning since 2004.	BH1	615750	9858550	At the side of granite inserberg, on the lineament.	B	Road rehabilitation will be required.	VC: William A Ogo#
								BH 2			no	yes	The shallow well was made by RIDEP. But pump has been broken followed by open up the concrete cap and its functioning as open shallow well.	BH2	615600	9858300	Between two granite inserberg. At the center of the valley.	B	Road rehabilitation will be required.	
								BH3	617309	9856692	On the clear lineament. Between two large inserberg. Grey sand soil distributes at the valley.	A								
								BH4	616800	9855150	Intersection of two major lineament.	A	Road rehabilitation will be required.							
								BH5	614697	9854960	Between two granite inserberg. At the center of the valley.	A	Road rehabilitation will be required.							
								BH6			not located as the BH by HESAWA has water.	A								



Groundwater Development Plan

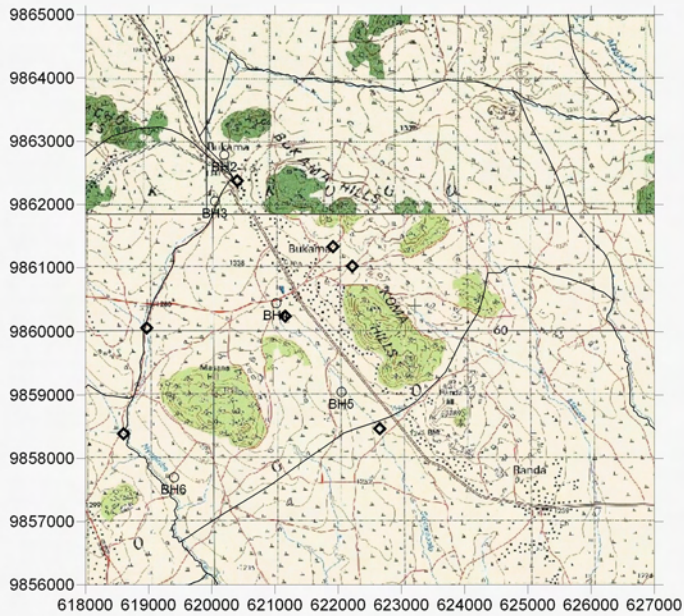


Lineament Map

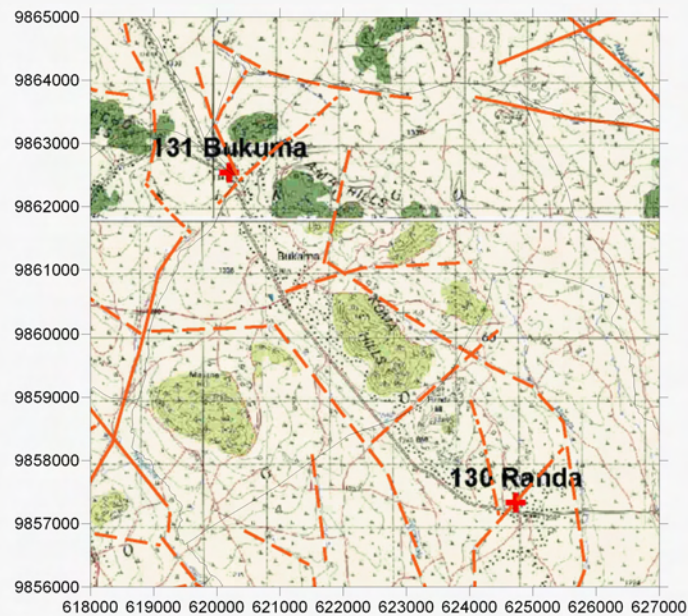
LEGEND

- Existing Water Source
- Alternative Bore Hole Site
- Recommended Site for the Drilling
- Village Boundary from Statics Office (2004)
- Estimated Village Boundary at Survey (March 2006)
- Clear Lineament from Aerial Photograph Interpretation
- Minor Lineament from Aerial Photograph Interpretation
- Past Drilling Records (source DDCA, SIDA)  
 D = Depth (GL-m), SWL = Static Water Level (GL-m), Yield = m<sup>3</sup>/h, WS = Water Struck Depth (GL-m)
- Trace Lineament from Aerial Photograph Interpretation

Survey Date	District	ID	Village	Population	Access	Topographic, Geological Overview	Condition of Water Source	Existing Water Source				Remarks	Alternative Bore Hole Location				Remarks	Attended Villager
								Type of Source	Coordination	Function	Seasonal		BH Number	Coordination	Description of Selected point (Geology, Topography, Structure)	Score (probability of yielding well)		
2006/3/23	Tarime	131	Bukama	4,017	50 min from Tarime through well maintained rough road.	Granite inserberg exists both at west and east, and the hills are splitted by narrow valley with lineament.	More than 13 springing points (hand dug open well or pond) exist, but all of them dry up in dry season. The villagers depend on the SW in Omoche or water sellers.						BH1	612400 9863900	Clear lineament at the valley between granite inserberg.	A	Road rehabilitation will be required.	VEO: Jose Ngalla
													BH2	620199 9862786	Upper side of creek. Close to the lineamt. Almost flatland.	B		
													BH3	620050 9862050	Upper portion of small valley. On the lineament.	B	Road rehabilitation will be required.	
													BH4	621017 9860454	At the wide valley. Extension of two minor lineaments.	A		
													BH5	622050 9859050	At the center of a valley. Clear lineament.	A	Road rehabilitation will be required.	
													BH6	619400 9857700	At the center of a valley. Clear lineament.	A	Road rehabilitation will be required.	



Groundwater Development Plan

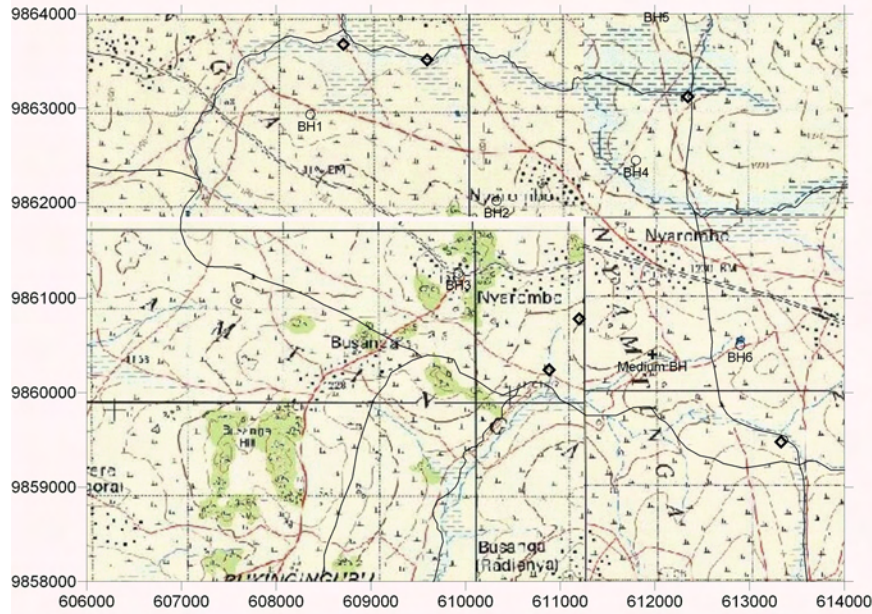


Lineament Map

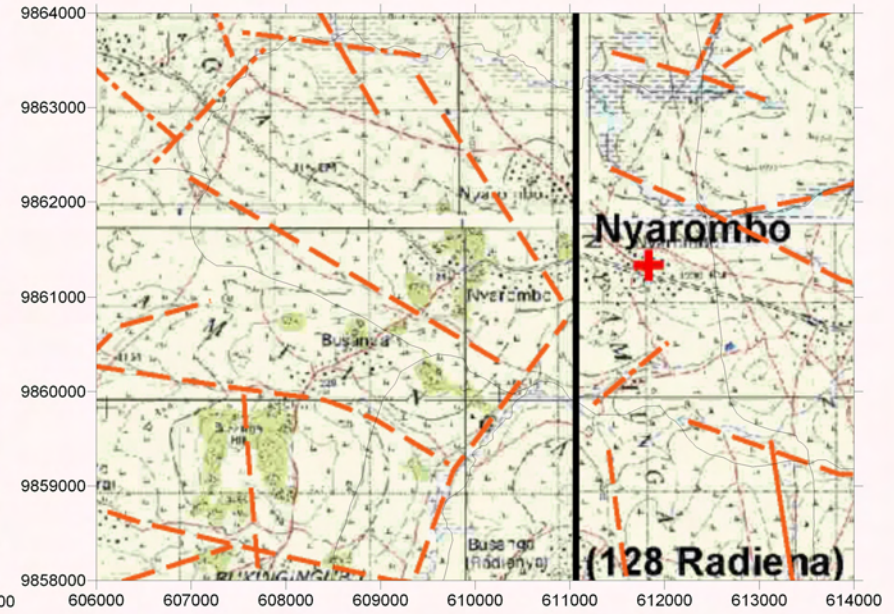
LEGEND

- Existing Water Source
- Alternative Bore Hole Site
- Recommended Site for the Drilling
- Village Boundary from Statics Office (2004)
- Estimated Village Boundary at Survey (March 2006)
- Clear Lineament from Aerial Photograph Interpretation
- Minor Lineament from Aerial Photograph Interpretation
- Past Drilling Records (source DDCA, SIDA)  
D = Depth (GL-m), SWL = Static Water Level (GL-m), Yield = m<sup>3</sup>/h, WS = Water Struck Depth (GL-m)
- Trace Lineament from Aerial Photograph Interpretation

Survey Date	District	ID	Village	Population	Access	Topographic, Geological Overview	Condition of Water Source	Existing Water Source					Alternative Bore Hole Location						
								Type of Source	Coordination	Function	Seasonal	Remarks	BH Number	Coordination	Description of Selected point (Geology, Topography, Structure)	Score (probability of yielding well)	Remarks	Attended Villager	
2006/3/22	Tarime	137	Nyarombo	2,049	1h 10 min through well maintained rough road.	Low lying valley at north. Granite hills and ridges occupy southern portion. Outcrops of granite (coarse - medium grained) is common at the hill side and top hill.	1 SW and 1BH, about 6 hand dug wells at the stream. In dry season, villagers depend on the water source from Lake Victoria.	Medium BH	611975	9860402	no	no	A bishop in the village privately drilled. Even the water is existing in the hole, it is not open to the public and the hole is not yet completed.	BH1	608360	9862936	At the center of wide valley. Laterites and granitic sand at the slope.	A	Because of the government program for drought area, VC and VEO was mentioned that they are busy. Therefore, two members of water committee attended. VVC: Johannes Kanyongo, Lucas Orudo (no photo has taken as the camera was broken)
								BH2	610328	9862020	At the center of wide valley. Laterites and granitic sand at the slope.	A							
								BH3	609924	9861264	Between two granite insberg. At the small depression.	A							
								BH4	611800	9862450	At the center of wide valley.	A	Road rehabilitation will be required.						
								BH5	612016	9864090	At the intersection of two wide valley. Close to the existing BH.	A							
								BH6	612900	9860500	At the two wide valley. Upper portion of the BH.	A	Road rehabilitation will be required.						



Groundwater Development Plan

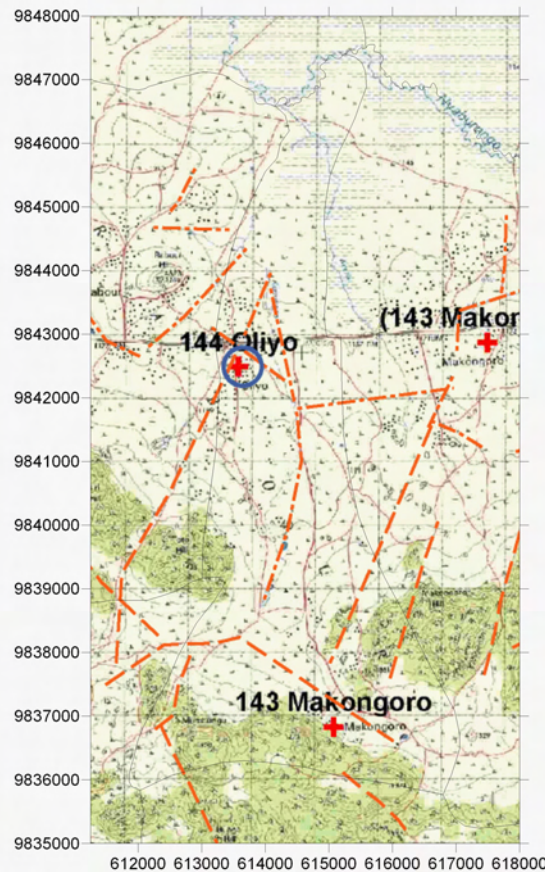
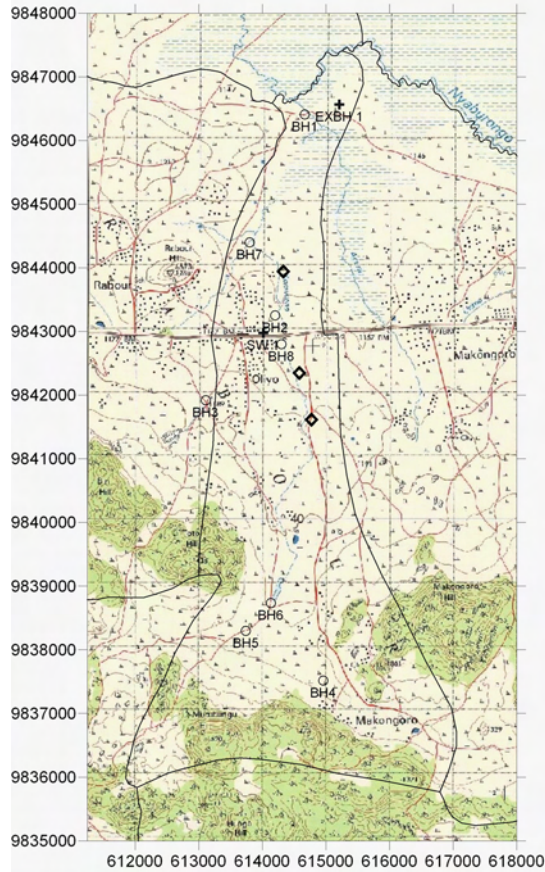


Lineament Map

LEGEND

- Existing Water Source
- Alternative Bore Hole Site
- Recommended Site for the Drilling
- Village Boundary from Statics Office (2004)
- Estimated Village Boundary at Survey (March 2006)
- Clear Lineament from Aerial Photograph Interpretation
- Minor Lineament from Aerial Photograph Interpretation
- Past Drilling Records (source DDCA, SIDA)  
D = Depth (GL-m), SWL = Static Water Level (GL-m), Yield = m<sup>3</sup>/h, WS = Water Struck Depth (GL-m)

Survey Date	District	ID	Village	Population	Access	Topographic, Geological Overview	Condition of Water Source	Existing Water Source					Alternative Bore Hole Location					Attended Villager
								Type of Source	Coordination	Function	Seasonal	Remarks	BH Number	Coordination	Description of Selected point (Geology, Topography, Structure)	Score (probability of yielding water)	Remarks	
2006/020	Tarime	144	Oliyo	3,494	1 h to the junction of Nyaburongo River at the north and granite inserbergs at south. Lineament is generally trace at north, and clear at south.	3 Shallow Well (2 is not functioning), 1BH, Stream. 2 wells are available at dry season.	EXBH 1	615212 9846566	yes	no	Drilled by Geo China funded by IFAD. Salty taste.	BH1	614670 9846410	At the flatland with small depression, swamp. Grey sand soil and	B	Req. RS	VEO: John Odouo, Ward executive officer; Ismal Noiege Otak.	
							SW 1	614015 9842976	no	-	Pump is functioning but no water in the well.	BH2	614201 9843252	At the lineament center. The valley consist of weathered granite.	A			
												BH3	613110 9841920	Gentle slope on the lineament. Granitic sandy soil.	B	Req. RS		
												BH4	614958 9837516	Depression of wide valley. Fan deposit shall be distribute.	A			
												BH5	613742 9838296	Close to the intersection of two lineament. Consist of loose granitic sand.	A			
												BH6	614135 9838736	On the lineament. Small creek and depression. Consist of loose granitic sand.	B	Req. RS		
												BH7	613800 9844400	Intersection of two small creek or gully.	B	Req. RS		
												BH8	614300 9842800	On the lineament. Close to the bridge at village center.	A			



LEGEND

- +** Existing Water Source
- Alternative Bore Hole Site
- ◇** Recommended Site for the Drilling
- Village Boundary from Statics Office (2004)
- - -** Estimated Village Boundary at Survey (March 2006)
- Clear Lineament from Aerial Photograph Interpretation
- - -** Minor Lineament from Aerial Photograph Interpretation
- - -** Trace Lineament from Aerial Photograph Interpretation
- Past Drilling Records (source DDCA, SIDA)  
D = Depth (GL-m)  
SWL = Static Water Level (GL-m), Yield = m3/h,  
WS = Water Struck Depth (GL-m)