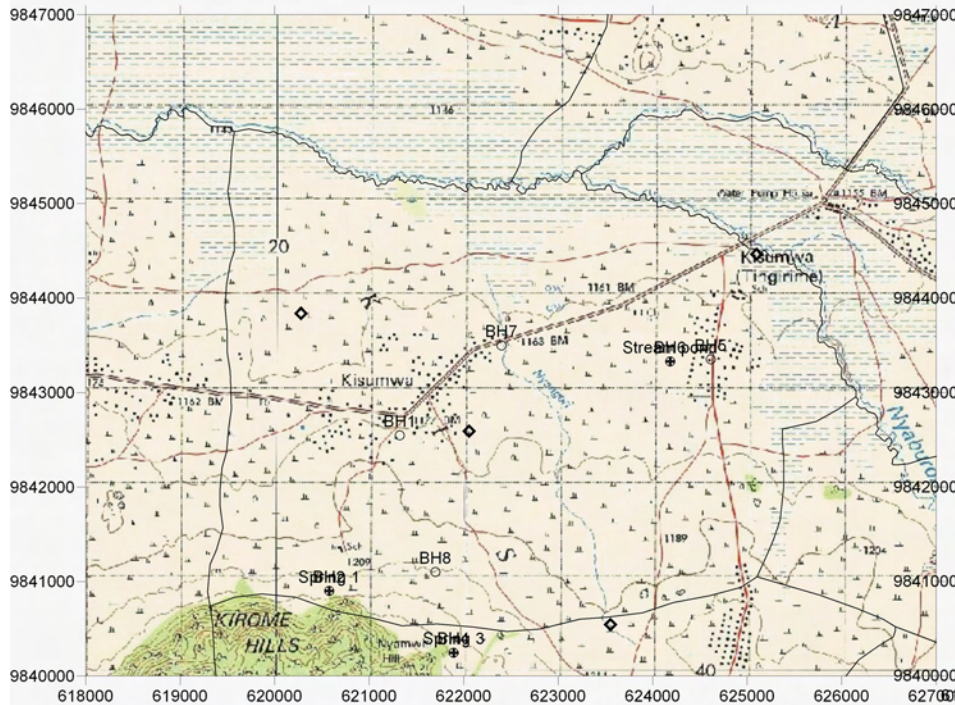
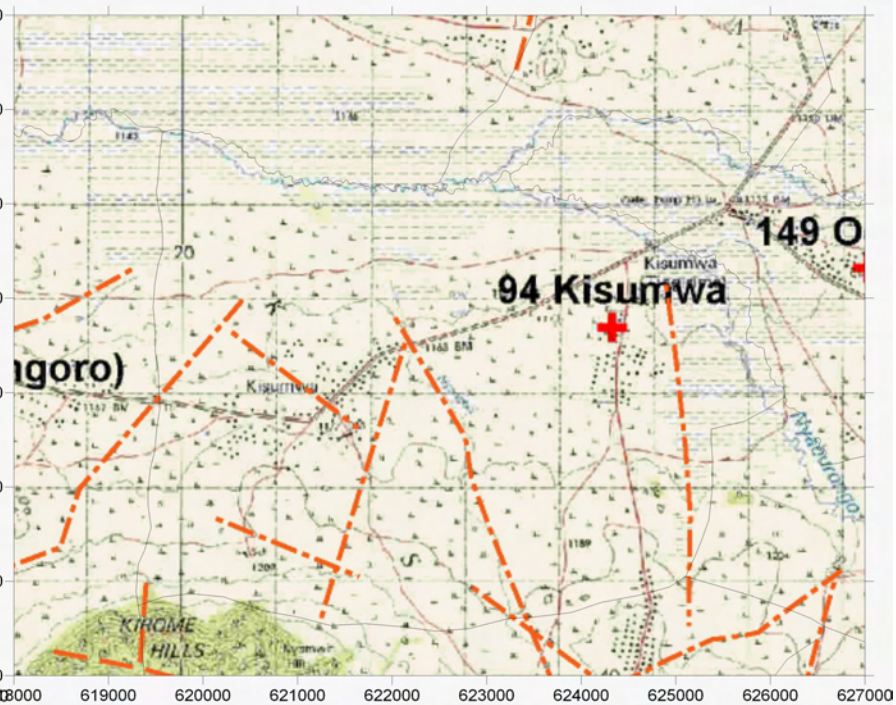


Survey Date	District	ID	Village	Population	Access	Topographic, Geological Overview	Condition of Water Source	Existing Water Source					Alternative Bore Hole Location					Remarks	Attended Villager	
								Type of Source	Coordination		Function	Seasonal	Remarks	BH Number	Coordination		Description of Selected point (Geology, Topography, Structure)			Score (probability of yielding well)
2006/3/20	Tarime	94	Kisumwa	2,069	10 min from Olyo village center. 40 min to Tarime through the Musoma - Kenia road.	Nyaburongo River at the north and granite insbergs at south. Village is almost occupied by flatland, gentle slope and hard to identify clear lineament.	3 Springs (permanent) and 3 stream pond, Wetland.	Spring 1	620578	9840900	-	no	At fan deposit of granite. Seems like pond.	BH1	621325	9842548	At the gentle hill side of laterites and gravels. Small depression.	C	Req, RS	VEO: Marwa Mkwena, Member of village water committee:Stanford Magori
								Spring 2	620011	9838642	-	no	Discharge is very little. But never dries up.	BH2	620578	9840900	Fan deposit of granite insberg with some laterite and Ngr.	B	Req, RS	
								Spring 3	621896	9840246	-	yes	At the side of the hill. Close to the granite insberg.	BH3	620011	9838642	At the side of the hill of granite with vegetation. Road is bumpy and	A	Road rehabilitation will be required.	
								Stream pond	624185	9843330	-	no	Flatland.	BH4	621892	9840246	At the lower depression of granite insberg	B	Road rehabilitation will be required.	
														BH5	624615	9843352	Gravels and vegetation. No indication of lineament.	C	Req, RS	
														BH6	624185	9843330	Flatland with small depression. Vegetation.	B	Req, RS	
														BH7	622400	9843500	Intersection of two lineament.	A	Road rehabilitation will be required.	
														BH8	621700	9841100	Intersection of two lineament.	A	Road rehabilitation will be required.	



Groundwater Development Plan



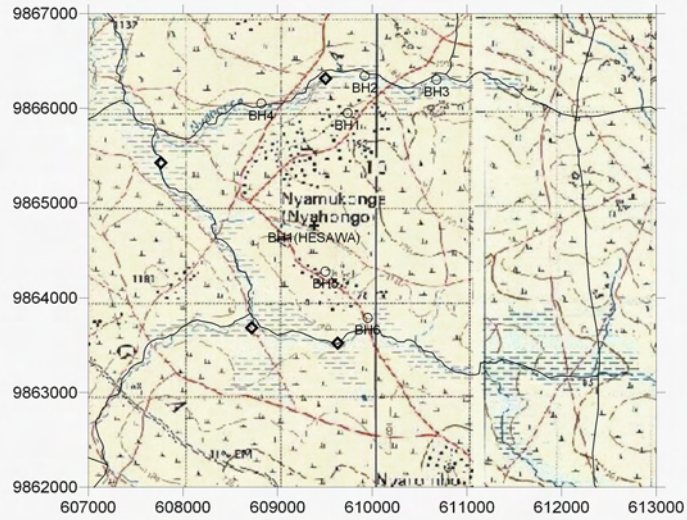
Lineament Map

LEGEND

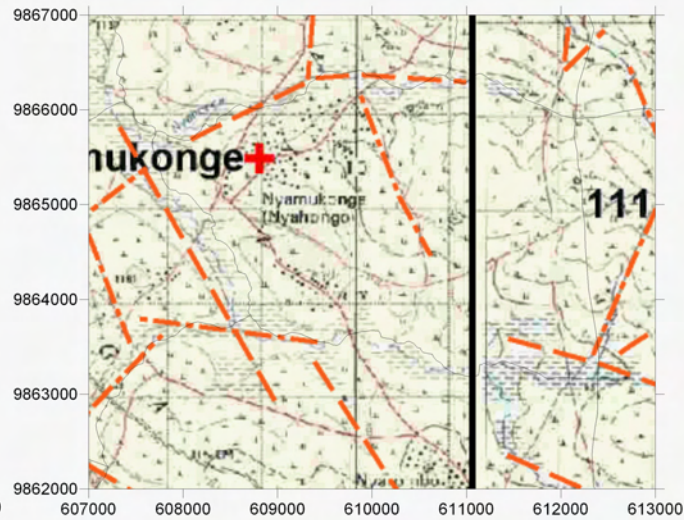
- Existing Water Source
- Alternative Bore Hole Site
- Recommended Site for the Drilling
- Village Boundary from Statics Office (2004)
- Estimated Village Boundary at Survey (March 2006)
- Clear Lineament from Aerial Photograph Interpretation
- Minor Lineament from Aerial Photograph Interpretation
- Trace Lineament from Aerial Photograph Interpretation
- Past Drilling Records (source DDCA, SIDA)  
D = Depth (GL-m), SWL = Static Water Level (GL-m), Yield = m<sup>3</sup>/h, WS = Water Struck Depth (GL-m)

2-47

Survey Date	District	ID	Village	Population	Access	Topographic, Geological Overview	Condition of Water Source	Existing Water Source				Remarks	Alternative Bore Hole Location				Attended Villager			
								Type of Source	Coordination	Function	Seasonal		BH Number	Coordination	Description of Selected point (Geology, Topography, Structure)	Score (probability of yielding well)		Remarks		
2006/9/22	Tarime	112	Nyamkonge	1,593	1h 10 min through well maintained rough road, 20 min from the junction of Nyarombo through bumpy rough road.	Surrounded by wide valleys, Granite hills and ridges occupies at the center of the village.	1 BH, 3 hand dug open wells at stream. Except 1BH, Lake Victoria is the main water source in the dry season.	BH1	609385	9864764	no	no	Made in 1995 by HESAWA. Due to the failure of the pump, the exploitation is limited. But small amount can be exploited.	BH1	609737	9865948	At the hill side with some granite outcrops.	C	Req. RS	VC: Joochi D. Makenge
														BH2	609921	9866342	At the center of wide valley with granitic sandy soil.	B		
														BH3	610679	9866302	Between two granite inserberg. At the center of the valley.	A		
														BH4	608827	9866050	In the wide valley with grey sandy	B		
														BH5	609505	9864278	At the hill side with some granite outcrops.	C	Req. RS	
														BH6	609950	9863790	At the center of wide valley.	A		



Groundwater Development Plan

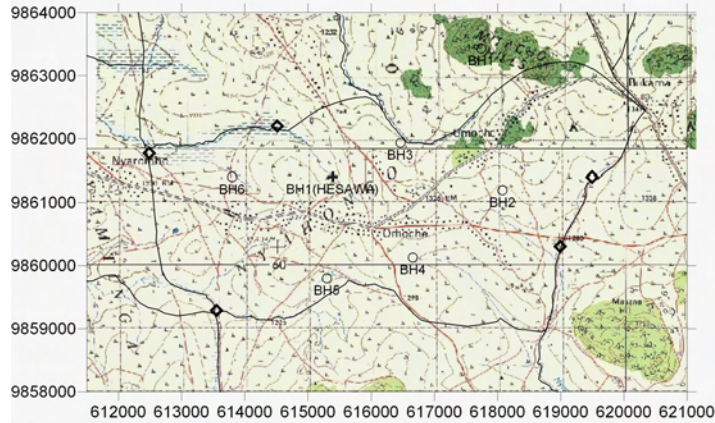


Lineament Map

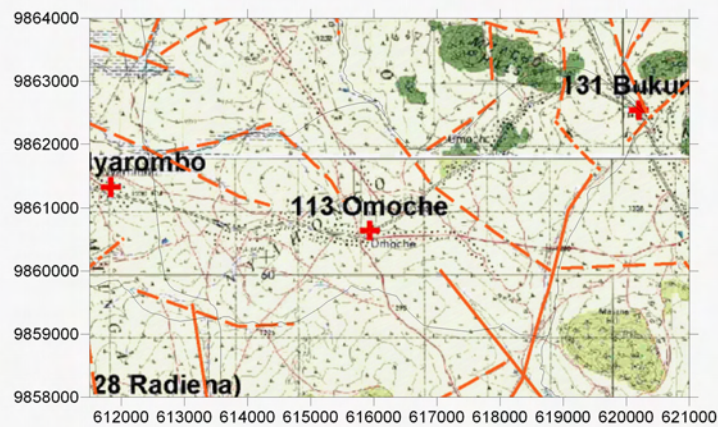
LEGEND

- +** Existing Water Source
- Alternative Bore Hole Site
- ◇** Recommended Site for the Drilling
- Village Boundary from Statics Office (2004)
- - -** Estimated Village Boundary at Survey (March 2006)
- Clear Lineament from Aerial Photograph Interpretation
- - -** Minor Lineament from Aerial Photograph Interpretation
- Past Drilling Records (source DDCA, SIDA)  
D = Depth (GL-m), SWL = Static Water Level (GL-m), Yield = m<sup>3</sup>/h, WS = Water Struck Depth (GL-m)
- - -** Trace Lineament from Aerial Photograph Interpretation

Survey Date	District	ID	Village	Population	Access	Topographic, Geological Overview	Condition of Water Source	Existing Water Source				Remarks	Alternative Bore Hole Location			Score (probability of yielding well)	Remarks	Attended Villager		
								Type of Source	Coordination	Function	Seasonal		BH Number	Coordination	Description of Selected point (Geology, Topography, Structure)					
2006/3/23	Tarime	113	Omoche	3,539	1 h from Tarime town through the well maintained rough road.	Mostly occupied by low lying hills and ridges of granite. Narrow valleys developed in direction of NW-SE	1 BH, 5 handdug open wells along the stream. BH is the only source in dry season.	BH1	615391	9861406	yes	no	Hesawa Medium BH constructed in 229/7/1998.	BH1	617742	9863432	At the center of a valley. Minor lineament. Coarse granite with joints, weathered granite distributes at Wide valley center. Granite outcrops are common at the area.	A	Road rehabilitation will be required.	VWC member: Samson Mwita
								BH2	618077	9861196				Intersection of two small valley. Wide valley. Line of granite outcrops are commonly found.	A					
								BH3	616462	9861936				At the wide valley. Intersection of two small valley.	B	Road rehabilitation will be required.				
								BH4	616660	9860130				At the intersection of two wide valley. On the clear lineament.	A	Road rehabilitation will be required.				
								BH5	615300	9859800				On the clear lineament. Granite outcrops at the hillside.	A					
								BH6	613800	9861400										



Groundwater Development Plan

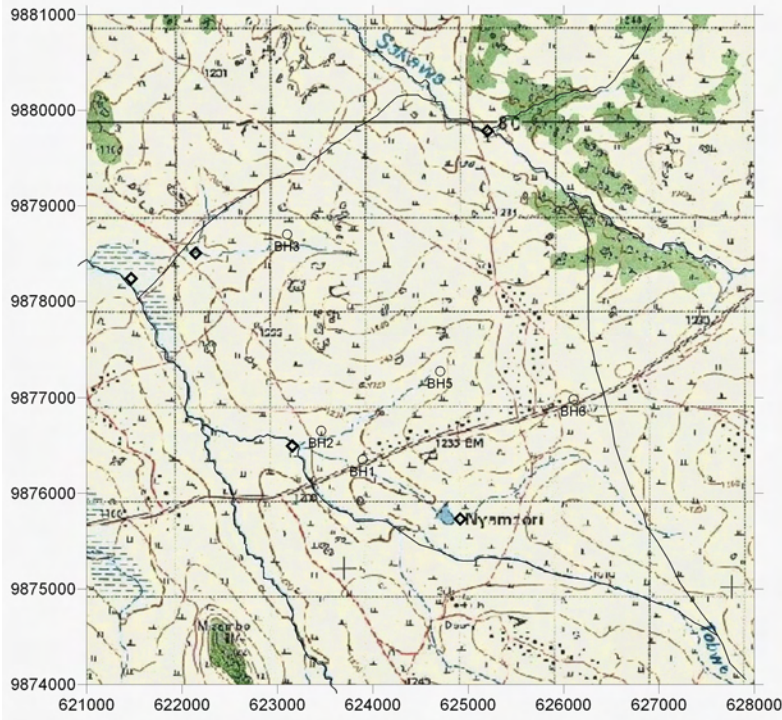


Lineament Map

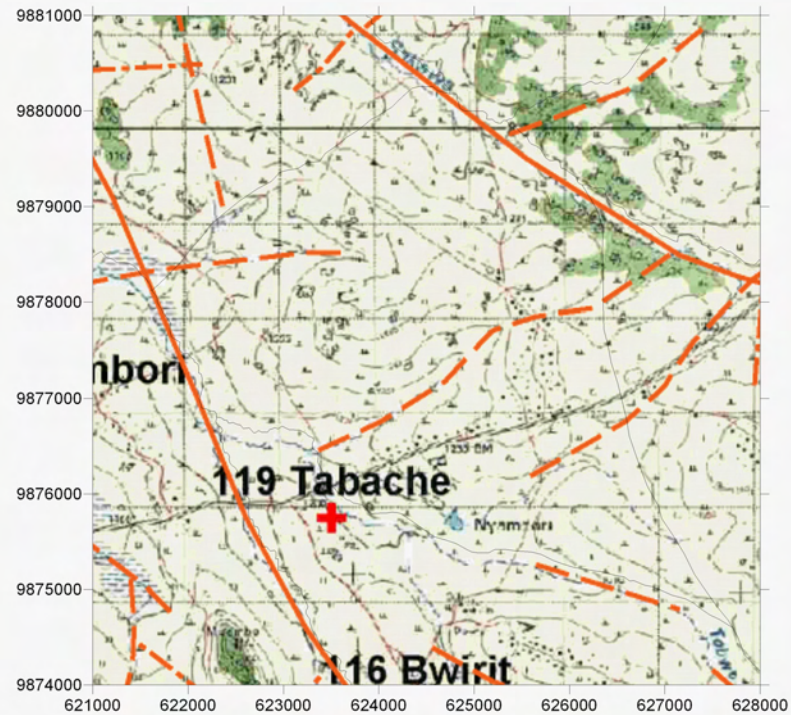
LEGEND

- Existing Water Source
- Alternative Bore Hole Site
- Recommended Site for the Drilling
- Village Boundary from Statics Office (2004)
- Estimated Village Boundary at Survey (March 2006)
- Clear Lineament from Aerial Photograph Interpretation
- Minor Lineament from Aerial Photograph Interpretation
- Past Drilling Records (source DDCA, SIDA)  
D = Depth (GL-m), SWL = Static Water Level (GL-m), Yield = m<sup>3</sup>/h, WS = Water Struck Depth (GL-m)

Survey Date	District	ID	Village	Population	Access	Topographic, Geological Overview	Condition of Water Source	Existing Water Source				Alternative Bore Hole Location								
								Type of Source	Coordination	Function	Seasonal	Remarks	BH Number	Coordination	Description of Selected point (Geology, Topography, Structure)	SCORE (probability of yielding well)	Remarks	Attended Villager		
2006/3/21	Tarime	119	Thabache		1 h 30 min from Tarime through rough road in good condition.	Consist of clear inlayment with narrow valleys. In general, the mountain side is occupied by granite outcrops.	Some springing points can be observed in rainy season, but the water source is mainly charcoal dam and the lake.							BH1	623891	9876354	Road side within a valley. On the inlayment with grey and granitic sand - gravel.	A		
														BH2	523457	9876654	At the valley on the lineament. Some water remain in the stream.	A		
														BH3	623100	9878700	At the valley on the lineament.	A	Road rehabilitation will be required.	
														BH4	635200	9875850	Upper stream of charco dam. At the intersection of two lineaments.	A	Road rehabilitation will be required.	
														BH5	624704	9877278	At the center of the valley with inlayment. Some granite outcrops at the side of the hill.	B		
														BH6	626102	9876986	Small depression close to the road with coarse sand soil	B	Req. RS	



Groundwater Development Plan



Lineament Map

LEGEND

- Existing Water Source
- Alternative Bore Hole Site
- Recommended Site for the Drilling
- Village Boundary from Statics Office (2004)
- Estimated Village Boundary at Survey (March 2006)
- Clear Lineament from Aerial Photograph Interpretation
- Minor Lineament from Aerial Photograph Interpretation
- Past Drilling Records (source DDCA, SIDA)
- D = Depth (GL-m), SWL = Static Water Level (GL-m), Yield = m<sup>3</sup>/h, WS = Water Struck Depth (GL-m)