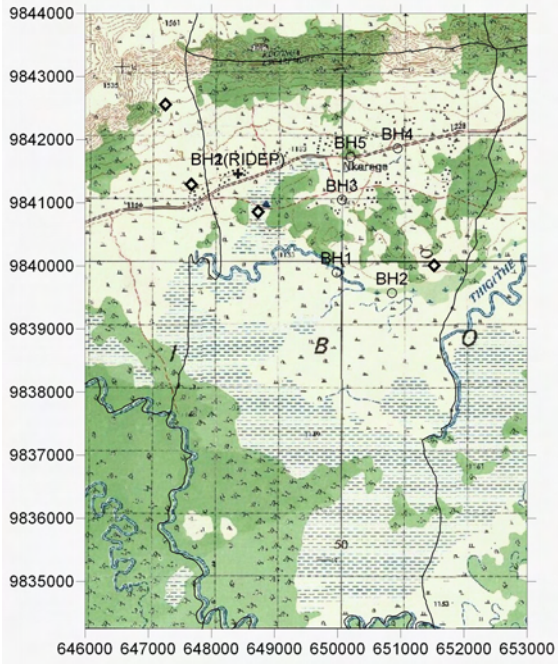
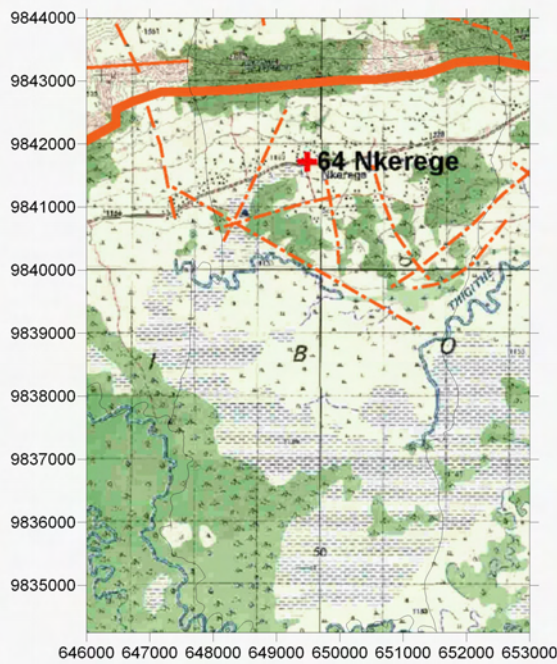


Survey Date	District	ID	Village	Population	Access	Topographic, Geological Overview	Condition of Water Source	Existing Water Source					Alternative Bore Hole Location							
								Type of Source	Coordination	Function	Seasonal	Remarks	BH Number	Coordination	Description of Selected point (Geology, Topography, Structure)	Score (probability of yielding well)	Remarks	Attended Villager		
2006/3/26	Tarime	64	Nkerege	2,686	1h from Tarime town through paved road and rough road.	Fault cliff at the north bound. Consist of gentle slope and lowland. Hills of volcanic rocks at the down side of cliff.	2 BH and 3 springs. 1 Spring is permanent. 1 hand pump in installed BH is private use (water vender).	BH1	648423	9841462	yes	no	Both BH1 and BH2 is drilled by the RIDEP. BH1 is with hand pump owned by a water vender (water is sold)	BH1	649983	9839894	At the valley of cut of lake of the Thegite river. Basalt with large cristal feldspes outcrops.	A	Road rehabilitation will be required.	VC: Gmanuwa Gibe
								BH2	648423	9841462	no	no	Due to the fallen rocks during fetching the water, it is sealed.	BH2	650859	9839570	Flatland with swamp at sorth and basalt hills at north. Outcrops of basalt.	B	Road rehabilitation will be required.	
														BH3	650068	9841044	At the hill side of volcanic hill. Joint rich basalt is common.	A		
														BH4	650952	9841862	At the valley between fault cliff and volcanic hill.	A		
														BH5	650203	9841724	At the valley between fault cliff and volcanic hill.	B		



Groundwater Development Plan

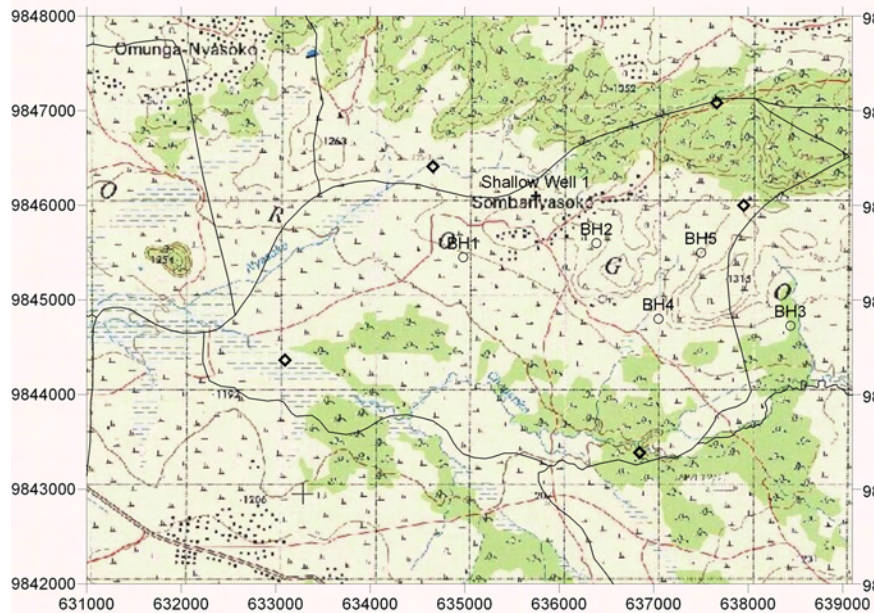


Lineament Map

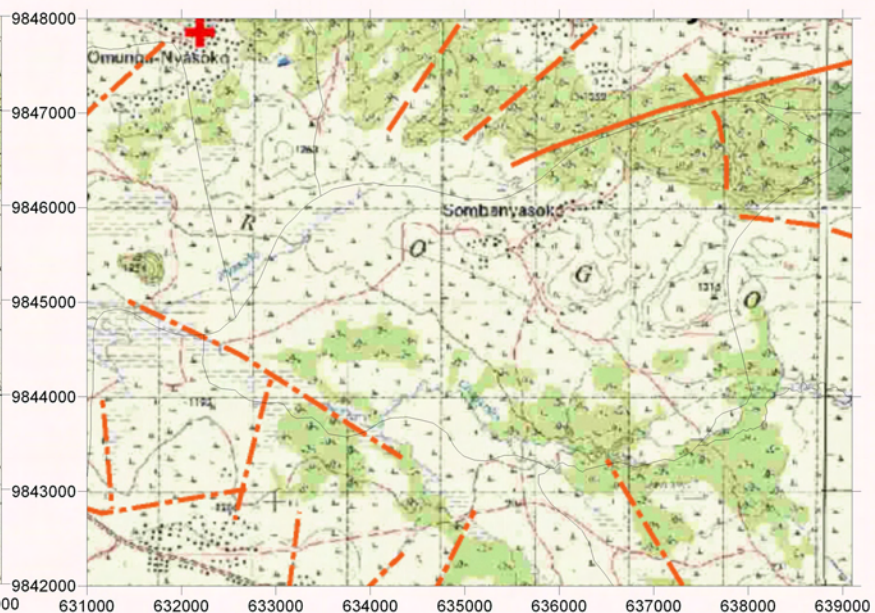
LEGEND

- Existing Water Source
- Alternative Bore Hole Site
- Recommended Site for the Drilling
- Village Boundary from Statics Office (2004)
- Estimated Village Boundary at Survey (March 2006)
- Clear Lineament from Aerial Photograph Interpretation
- Minor Lineament from Aerial Photograph Interpretation
- Past Drilling Records (source DDCA, SIDA)
- D = Depth (GL-m), SWL = Static Water Level (GL-m), Yield = m³/h, WS = Water Struck Depth (GL-m)
- Trace Lineament from Aerial Photograph Interpretation

Survey Date	District	ID	Village	Population	Access	Topographic, Geological Overview	Existing Water Source					Alternative Bore Hole Location												
							Condition of Water Source	Type of Source	Coordination	Function	Seasonal	Remarks	BH Number	Coordination	Description of Selected point (Geology, Topography, Structure)	Score (probability of yielding well)	Remarks	Attended Villager						
2006/3/23	Tarime	69	Sombanyasoko	916	30 min from Tarime through paved road (Musoma - Kenya road)	Hills and ridges at north eastern portion. Mostly occupied by lowland, gentle slopes and swamp along the river.	1 SW, 2 stream pond and 2 springs, several ponds. Only 1 SW is water source during dry season.	Shallow Well 1	635753	9846098	yes	no	Constructed by HESAWA in 1998. At the small valley of Nyanzan shists.	BH1	634985	9845450	At the gentle slope. Some springing point at the area. Shists of Nyanzan series is common.	C	Req. RS	VC: Charles Nyhande, VEO: Sinda Sandariya.				
																BH2	636395	9845600	Upper portion of small valley. Redish clayey soil at the top with weathered shists.		B			



Groundwater Development Plan

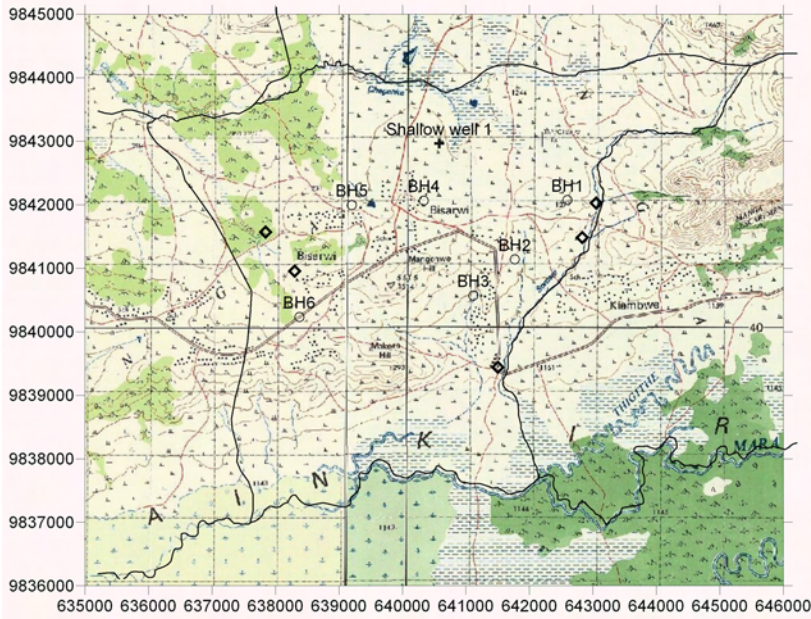


Lineament Map

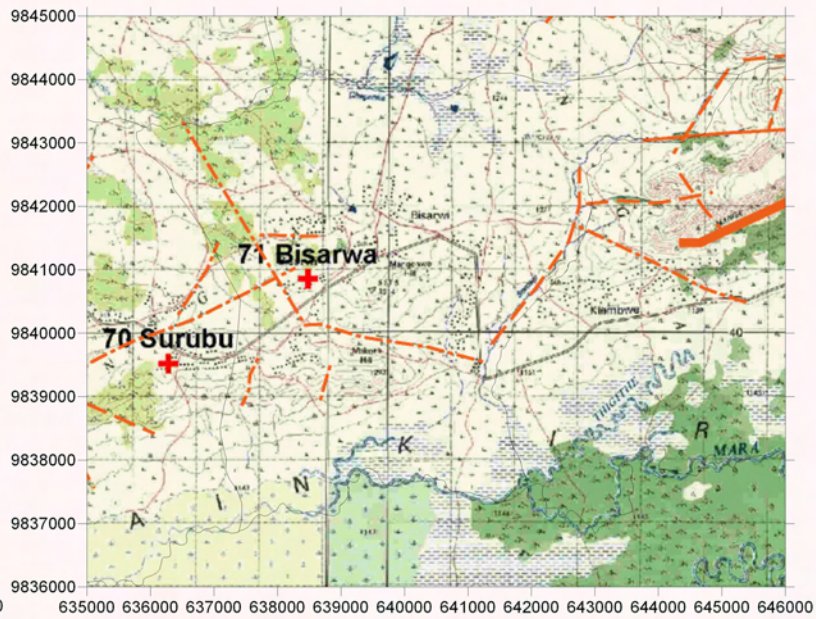
LEGEND

- + Existing Water Source
- Alternative Bore Hole Site
- ◇ Recommended Site for the Drilling
- Village Boundary from Statics Office (2004)
- Estimated Village Boundary at Survey (March 2006)
- Clear Lineament from Aerial Photograph Interpretation
- Minor Lineament from Aerial Photograph Interpretation
- Trace Lineament from Aerial Photograph Interpretation
- Past Drilling Records (source DDCA, SIDA)
D = Depth (GL-m), SWL = Static Water Level (GL-m), Yield = m³/h, WS = Water Struck Depth (GL-m)

Survey Date	District	ID	Village	Population	Access	Topographic, Geological Overview	Condition of Water Source	Existing Water Source					Alternative Bore Hole Location					Attended Villager				
								Type of Source	Coordination	Function	Seasonal	Remarks	BH Number	Coordination	Description of Selected point (Geology, Topography, Structure)	Score (probability of yielding well)	Remarks					
2006/3/26	Tarime	71	Bisarwi	2,833	40 min from Tarime town through paved road and some rough road in good condition	Bounded by Mara river at south edge, generally occupied by steep ridges of metamorphosed rock member.	1 Shallow Well, 8 springs, 8 springs dry up in dry season. The water source in dry season is 1 SW and Mara river.	Shallow well 1	640578	9842964	yes	yes	Providing good discharge through a year. But in dry season, as this well is water source for village, long time waiting and far away from some village.	BH1	642598	9842074	Upper portion of a small valley and depression. Consist of gneiss and meta granite.	B		VC: Habel Chacha		
																BH2	641770	9841140	At the side slope of the valley on clear lineament. Shist and gneiss outcrops at hill side.		A	
																BH3	641117	9840570	Down side of dam. Beside the small valley with mafic rich gneiss.		A	
																BH4	640336	9842068	At the flat land of basin shape valley. Grey sandy soil dritributes at the surface soil.		B	Req RS
																BH5	639202	9841996	Down side of dam. Almost flat land with some outcrops of metamorphic members.		C	Req RS
																BH6	638375	9840234	At the flat land with some pebbles and cobble of quartz rich gneiss.		C	Req RS



Groundwater Development Plan



Lineament Map

LEGEND

- Existing Water Source
- Alternative Bore Hole Site
- Recommended Site for the Drilling
- Village Boundary from Statics Office (2004)
- Estimated Village Boundary at Survey (March 2006)
- Clear Lineament from Aerial Photograph Interpretation
- Minor Lineament from Aerial Photograph Interpretation
- Past Drilling Records (source DDCA, SIDA)
D = Depth (GL-m), SWL = Static Water Level (GL-m), Yield = m³/h, WS = Water Struck Depth (GL-m)