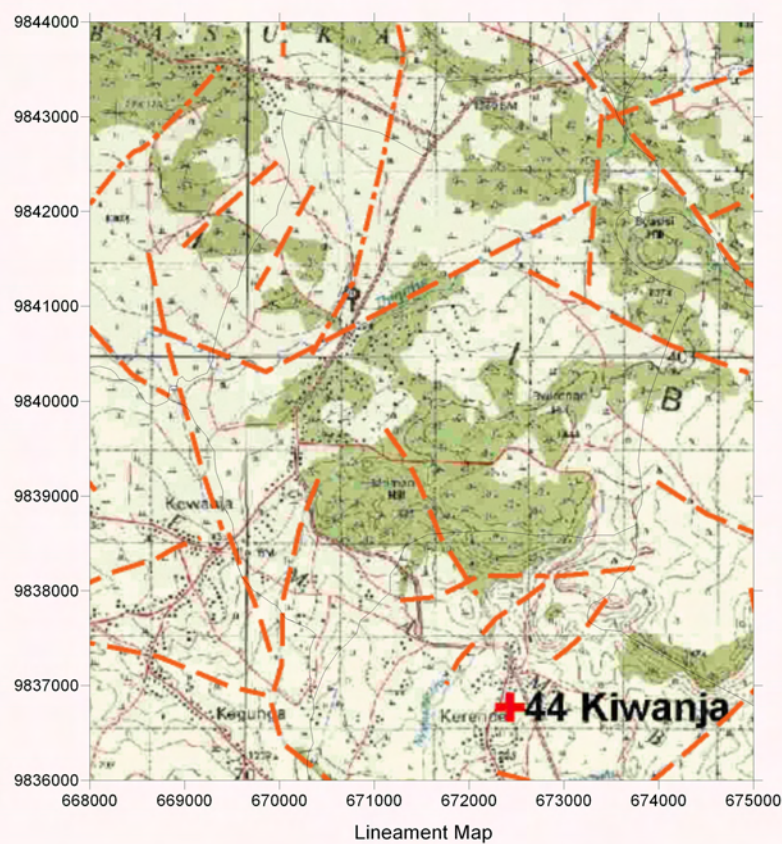
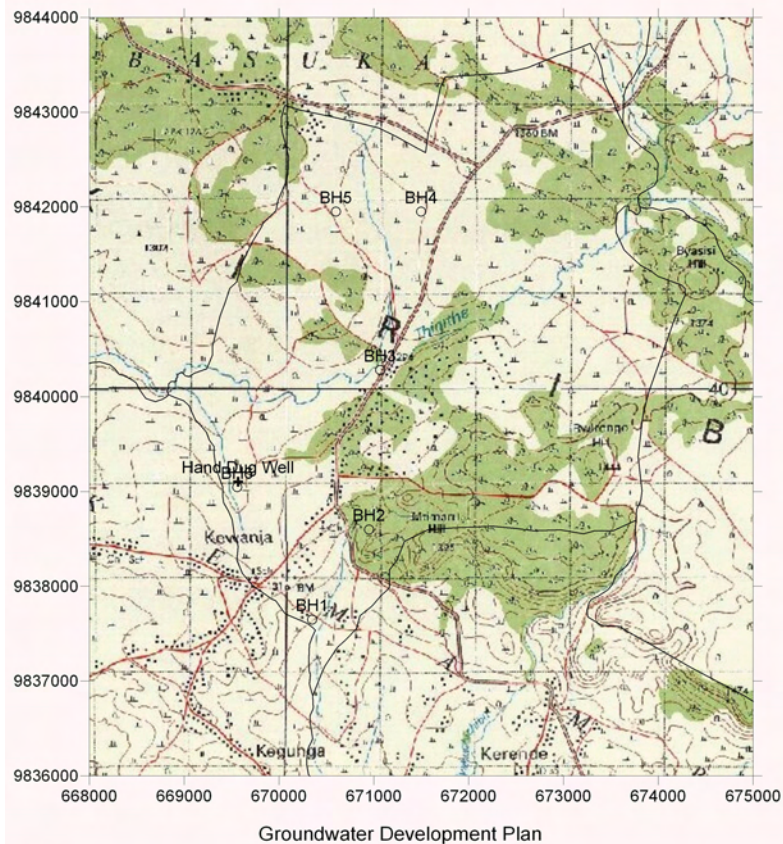


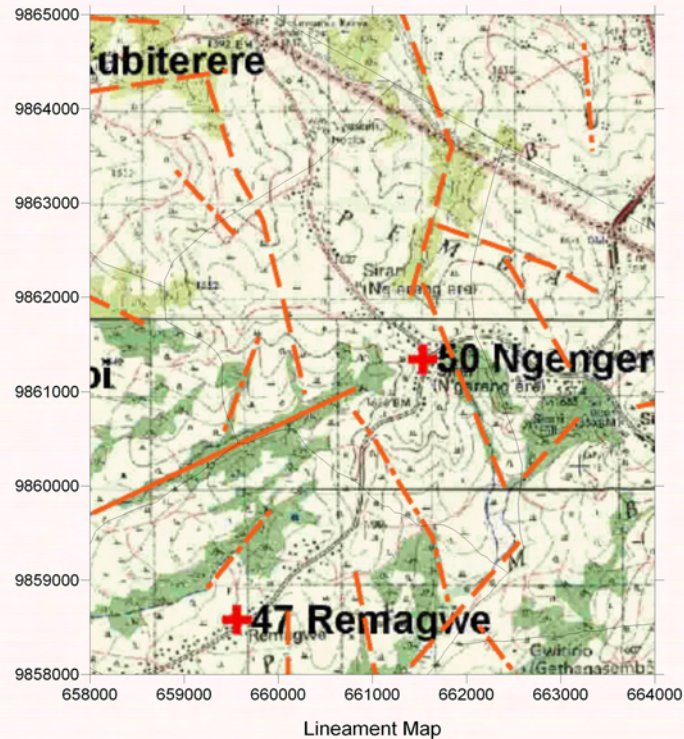
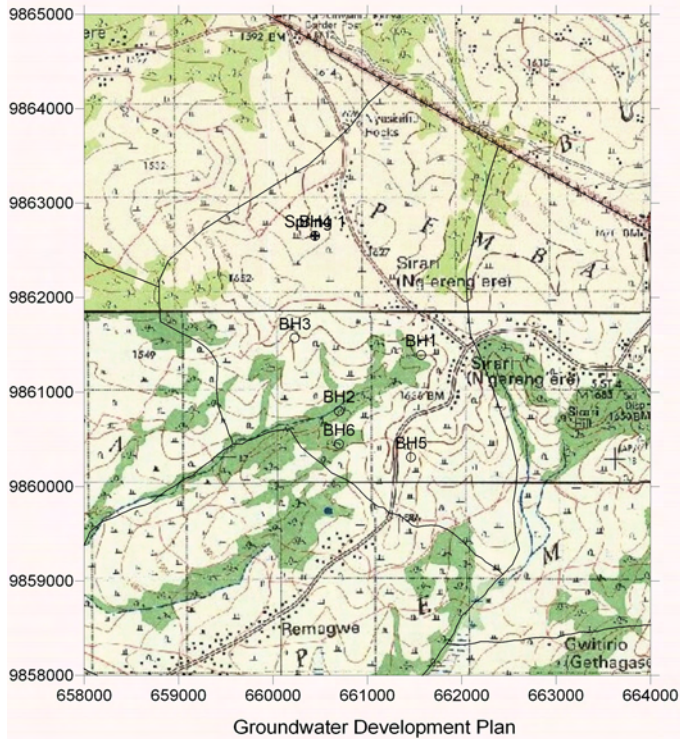
Survey Date	District	ID	Village	Population	Access	Topographic, Geological Overview	Existing Water Source					Alternative Bore Hole Location					Attended Villager			
							Condition of Water Source	Type of Source	Coordination	Function	Seasonal	Remarks	BH Number	Coordination	Description of Selected point (Geology, Topography, Structure)	Score (probability of yielding well)		Remarks		
2006/3/25	Tarime	44	Kwanja	3,981	1 h from Tarime town through rough and bumpy road.	Mostly occupied by low lying hills and ridges of gneiss of Nyanzan Series. Quartzite, chert and some dacite intrusions can be observed.	10 hand dug open wells, ponds and 1 dam are available only in wet season. They depend the water source mostly from water vender.	Hand Dug Well	669569	9839104	-	yes	Dries up in the dry season. At the hill side, outcrops of quartz rich gneiss can be found.	BH1	670350	9837650	At the valley with some seasonal spring. Quartz rich semi metamorphosed rocks at slope.	B	Road rehabilitation will be required.	VC: Bugomba Makonge
														BH2	670950	9838600	Between two hills. At the high profile of the gentle slope. Fan deposits.	B	Road rehabilitation will be required.	
														BH3	671066	9840278	At the Thigithi river side. Dark grey clayey soil at the surface.	B	Road rehabilitation will be required.	
														BH4	671500	9841950	At the small depression of gentle slope.	C	Road rehabilitation will be required.	
														BH5	670600	9841950	At the wide valley with gentle slope. Some small hills of Nyanzan members distributes at both side of	B	Road rehabilitation will be required.	
														BH6	669559	9839046	At the side of relatively wide valley. At the side of joint and quartz rich	A		



LEGEND

- Existing Water Source
- Alternative Bore Hole Site
- Recommended Site for the Drilling
- Village Boundary from Statics Office (2004)
- Estimated Village Boundary at Survey (March 2006)
- Clear Lineament from Aerial Photograph Interpretation
- Minor Lineament from Aerial Photograph Interpretation
- Past Drilling Records (source DDCA, SIDA)
 D = Depth (GL-m), SWL = Static Water Level (GL-m), Yield = m³/h, WS = Water Struck Depth (GL-m)
- Trace Lineament from Aerial Photograph Interpretation

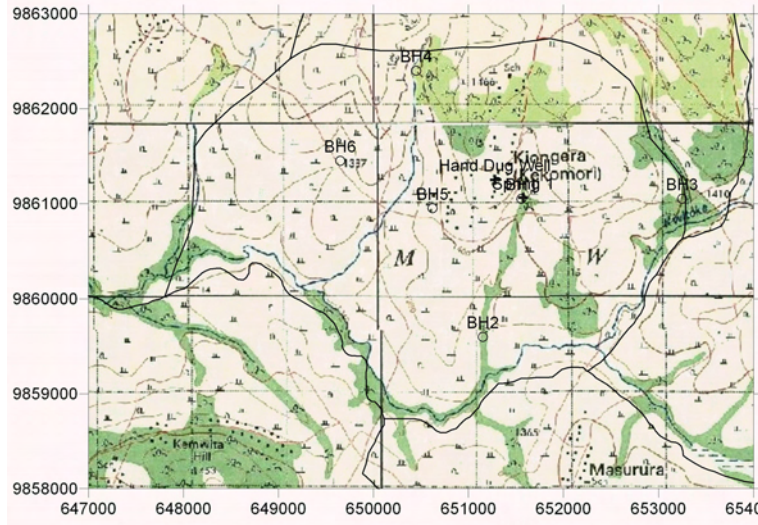
Survey Date	District	ID	Village	Population	Access	Topographic, Geological Overview	Condition of Water Source	Existing Water Source					Alternative Bore Hole Location					Attended Villager		
								Type of Source	Coordination	Function	Seasonal	Remarks	BH Number	Coordination	Description of Selected point (Geology, Topography, Structure)	Score (probability of yielding well)	Remarks			
2006/3/24	Tarime	50	Ng'ereng'ere	2,274	30 min from Tarime through paved road (Musoma - Kenya road)	Generally gentle hills and slopes of Granite and its members. The valleys are developed in irregular direction.	2 Shallow Wells, 6 improved springs and 8 springs. One pond and river.	Spring 1	660447	9862654	yes	no	Sealed by the concrete at the joint of the granite to concentrate the water. Some seepage observed. Rehabilitation will be required.	BH1	661570	9861394	At the valley of clear lineament. Vegetation and granite outcrops.	A	Road rehabilitation will be required.	VC: Willam Nyaruhanga, VEO Jhon Mundebe.
														BH2	660700	9860800	Same valley with BH1. Clear lineament at the intersection with	A	Road rehabilitation will be required.	
														BH3	660231	9861574	Upper portion of the valley with granite outcrops.	A	Road rehabilitation will be required.	
														BH4	660447	9862654	Upper portion of the valley with granite outcrops.	A	Road rehabilitation will be required.	
														BH5	661463	9860312	On the lineament at the valley. Granite interberg and outcrops exist at both side of the valley.	A	Road rehabilitation will be required.	
														BH6	660700	9860450	At the small valley. Downward of improved HESAWA spring.	B	Road rehabilitation will be required.	



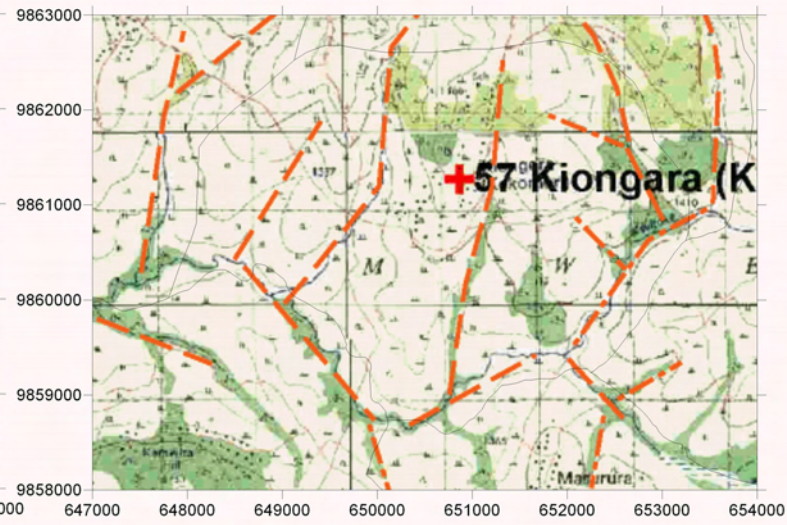
LEGEND

- | | | | | | |
|---|-----------------------------------|---------|---|-----|--|
| + | Existing Water Source | — | Village Boundary from Statics Office (2004) | --- | Trace Lineament from Aerial Photograph Interpretation |
| ○ | Alternative Bore Hole Site | - - - - | Estimated Village Boundary at Survey (March 2006) | ● | Past Drilling Records (source DDCA, SIDA)
D = Depth (GL-m), SWL = Static Water Level (GL-m), Yield = m3/h, WS = Water Struck Depth (GL-m) |
| ◇ | Recommended Site for the Drilling | — | Clear Lineament from Aerial Photograph Interpretation | | |
| | | - - - - | Minor Lineament from Aerial Photograph Interpretation | | |

Survey Date	District	ID	Village	Population	Access	Topographic, Geological Overview	Existing Water Source					Alternative Bore Hole Location								
							Condition of Water Source	Type of Source	Coordination	Function	Seasonal	Remarks	BH Number	Coordination	Description of Selected point (Geology, Topography, Structure)	Score (probability of yielding well)	Remarks	Attended Villager		
2006/3/24	Tarime	59	Kikomori	2,071	1h from Tarime town through rough and bumpy road.	At the hilly terrain of granite. Some clear lineaments developed at derrection of N-S.	5 springs and 5 hand dug wells. 2 hand dug wells and the spring survives through a year, but the discharge is limited in dry season.	Hand Dug Well	651277	9861250	yes	no	Dug through laterite up to 15 m. SWL of 8-9 meter. The well is privately owned.	BH1	651558	9861050	At the center of the valley. Close to a permanent spring. Granite outcrops and laterite distribute in the valley.	A	Road rehabilitation will be required.	
								Spring 1	651576	9861062	yes	no	Permanent spring. Seeping out from the granite outcrops.	BH2	651150	9859600	Down side of BH1 at the same valley.	A	Road rehabilitation will be required.	
														BH3	653250	9861050	Intersection of a river and a valley.	A	Road rehabilitation will be required.	
														BH4	650450	9862400	On the clear lineament.	A	Road rehabilitation will be required.	
														BH5	650620	9860950	On the clear lineament.	A	Road rehabilitation will be required.	
														BH6	649650	9861450	At the small valley along the road.	A	Road rehabilitation will be required.	



Groundwater Development Plan



Lineament Map

LEGEND

- + Existing Water Source
- Alternative Bore Hole Site
- ◆ Recommended Site for the Drilling
- Village Boundary from Statics Office (2004)
- Estimated Village Boundary at Survey (March 2006)
- Clear Lineament from Aerial Photograph Interpretation
- Minor Lineament from Aerial Photograph Interpretation
- Trace Lineament from Aerial Photograph Interpretation
- Past Drilling Records (source DDCA, SIDA)
D = Depth (GL-m), SWL = Static Water Level (GL-m), Yield = m³/h, WS = Water Struck Depth (GL-m)