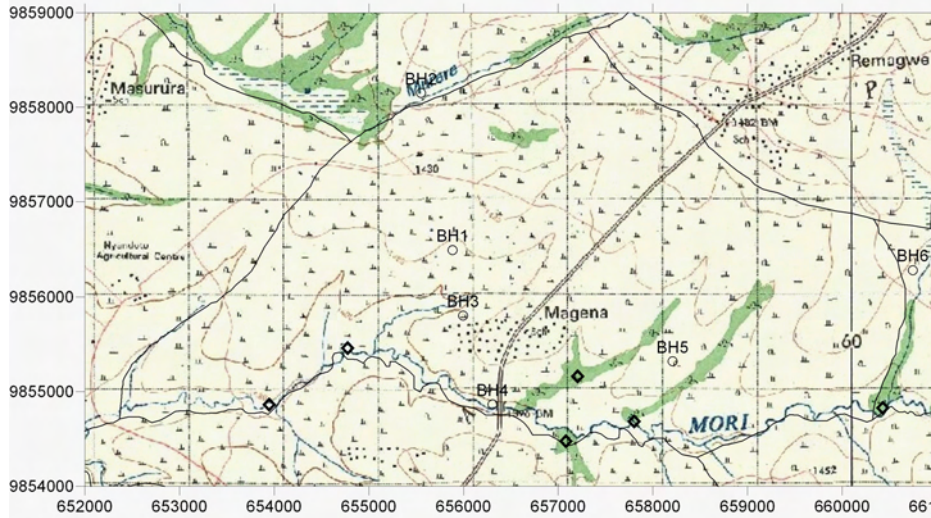
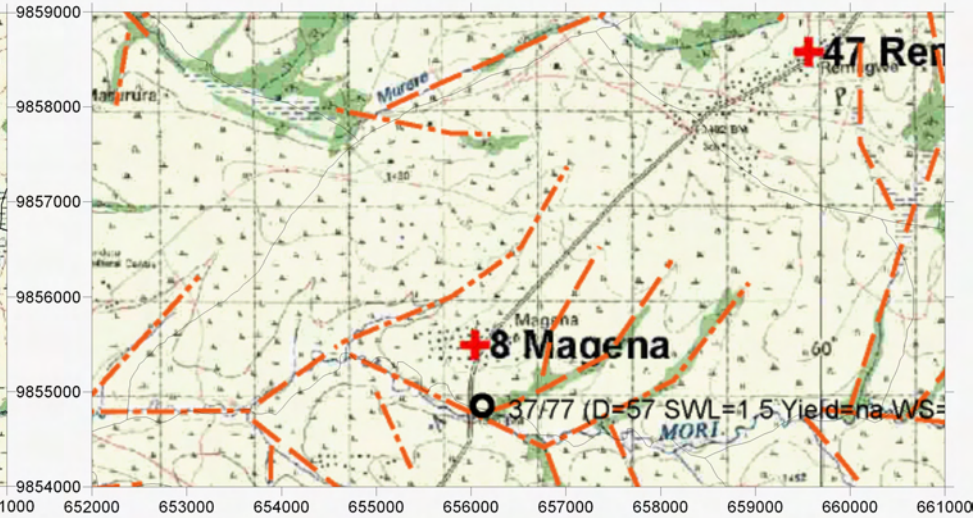


Survey Date	District	ID	Village	Population	Access	Topographic, Geological Overview	Existing Water Source					Alternative Bore Hole Location					Attended Villager			
							Condition of Water Source	Type of Source	Coordination	Function	Seasonal	Remarks	BH Number	Coordination	Description of Selected point (Geology, Topography, Structure)	Score (probability of yielding well)		Remarks		
2006/3/24	Tarime	8	Magena	2,504	10 min from Tarime through paved road (Musoma - Kenya road)	Generally gentle hills and slopes of Nyanzan metamorphic rocks. South end of the village is bounded by Mori river, and creeks at NW-SE direction.	6 Shallow wells, 11 hand dug open well and 8 springs. All water source dries up in dry season, and they depend on the source at Mori river.							BH1	655884	9856490	At the upper side of small valley with depression. Wet area. Mafic rich gneiss and clayey surface soil.	C	Req. RS, Road rehabilitation	VC: Constantino Munko
														BH2	655550	9858150	At the valley center on lineament. Weathered gneiss at the slope.	B	Req. RS, Road rehabilitation	
														BH3	655996	9855804	Center of a wide valley covered with dark grey clayey soil.	B	Req. RS, Road rehabilitation	
														BH4	656306	9854866	At the side of Mori river. Gentle slope with clayey soil.	B	Req. RS	
														BH5	658207	9855320	At the hill side of wide valley. Clayey dark soil.	C	Req. RS, Road rehabilitation	
														BH6	660745	9856282	At valley with minor lineament. Side of the	C	Req. RS, Road rehabilitation	



Groundwater Development Plan

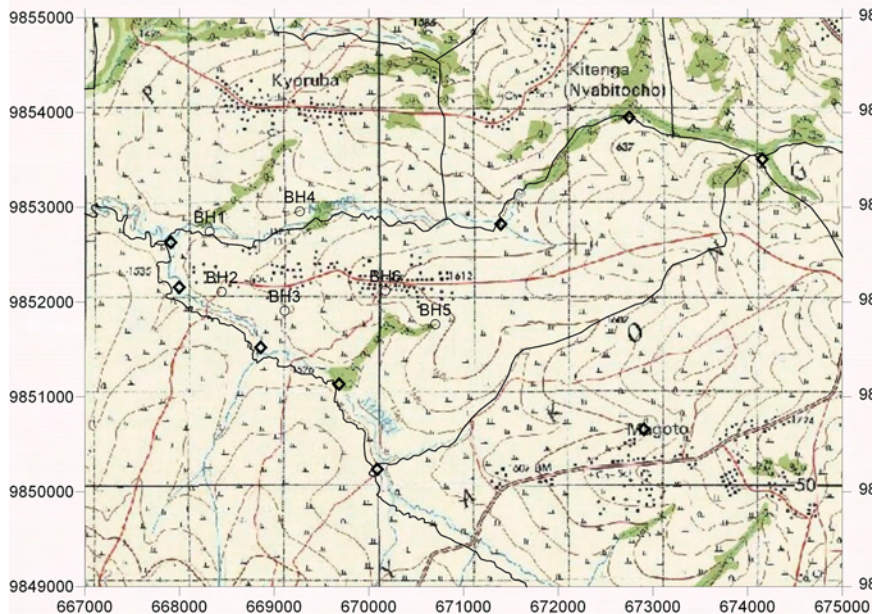


Lineament Map

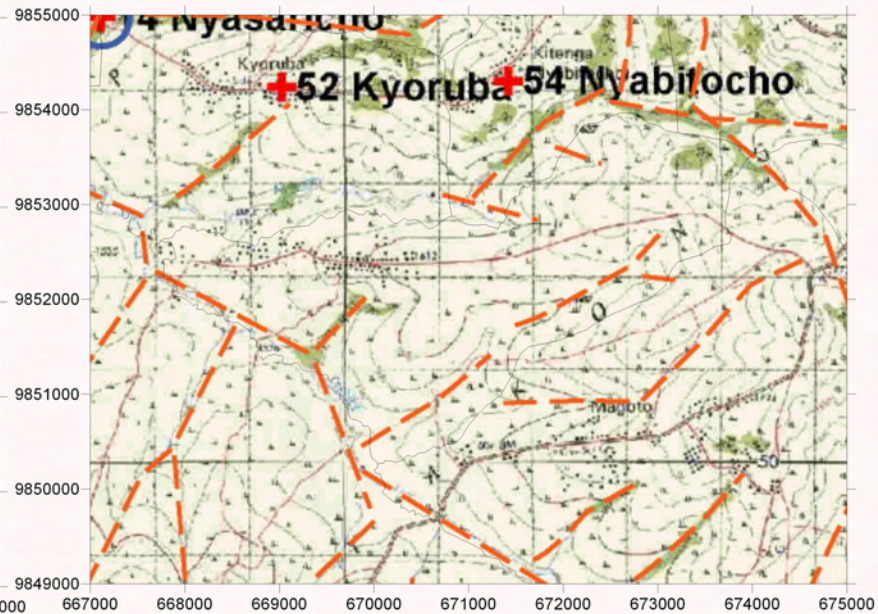
LEGEND

- Existing Water Source
- Alternative Bore Hole Site
- Recommended Site for the Drilling
- Village Boundary from Statics Office (2004)
- Estimated Village Boundary at Survey (March 2006)
- Clear Lineament from Aerial Photograph Interpretation
- Minor Lineament from Aerial Photograph Interpretation
- Trace Lineament from Aerial Photograph Interpretation
- Past Drilling Records (source DDCA, SIDA)
D = Depth (GL-m), SWL = Static Water Level (GL-m), Yield = m³/h, WS = Water Struck Depth (GL-m)

Survey Date	District	ID	Village	Population	Access	Topographic, Geological Overview	Condition of Water Source	Existing Water Source					Alternative Bore Hole Location					
								Type of Source	Coordination	Function	Seasonal	Remarks	BH Number	Coordination	Description of Selected point (Geology, Topography, Structure)	Score (probability of yielding well)	Remarks	Attended Villager
2006/3/25	Tarime	22	Kebweye	2,278	2 h drive through bumpy and swampy rough road thru Sirati. Short cut road from Tarime town is not passable during wet season.	High profile ridge consist of metamorphic rocks and its members at east, and bounded its boundary at Mori river.	There are several hand dug open wells, but non of them survives in dry season. They depend on the Mori river in dry season, but they think the river is dirty for the portable purpose.						BH1	668319 9852744	At the wide valley. Most likely that the valley is composed metamorphic rocks and its weathered zone.	B	Road rehabilitation will be required.	WEO Paulo Maisori, VC: Ambrose Basiri.
													BH2	668446 9852110	At the side of Mori river. Gentle slope with clayey soil.	B	Road rehabilitation will be required.	
													BH3	669111 9851910	Upper portion of wide valley with highly weathered metamorphic rock unit.	C	Road rehabilitation will be required.	
													BH4	669270 9852956	Wide valley with clear lineament. Slope consist of dark brown - grey clayey soil.	C	Road rehabilitation will be required.	
													BH5	670700 9851766	At the upper section of a valley. Quartz rich formations distributes.	B	Road rehabilitation will be required.	
													BH6	670175 9852122	At the upper section of a valley.	C	Road rehabilitation will be required.	



Groundwater Development Plan

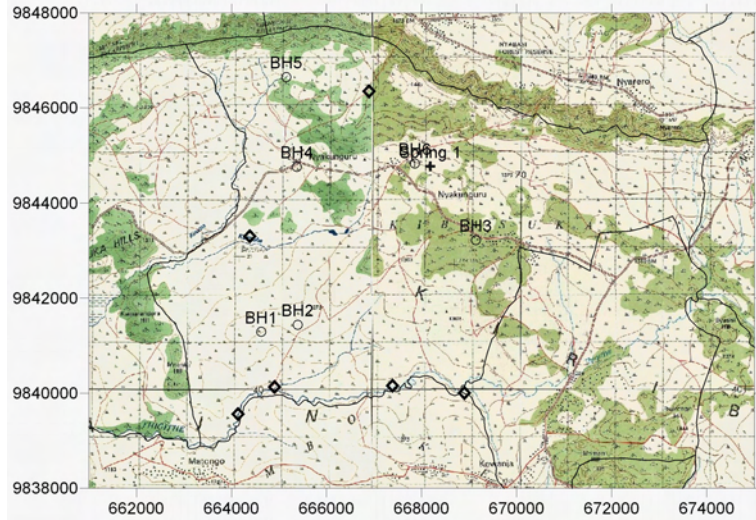


Lineament Map

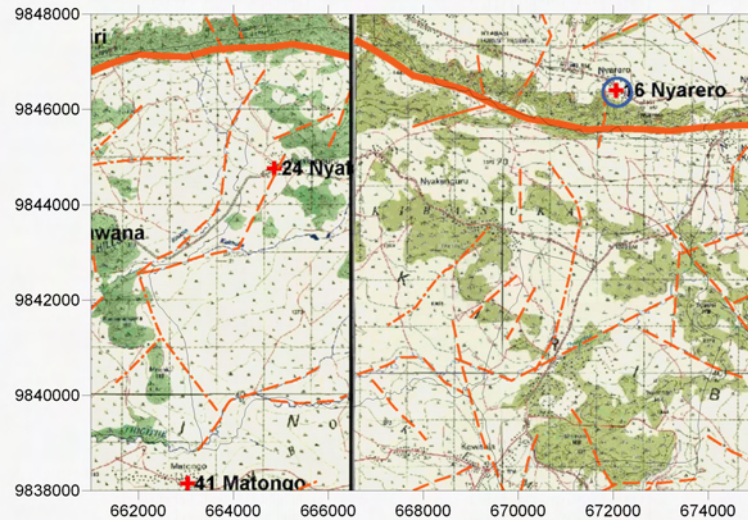
LEGEND

- Existing Water Source
- Alternative Bore Hole Site
- Recommended Site for the Drilling
- Village Boundary from Statics Office (2004)
- Estimated Village Boundary at Survey (March 2006)
- Clear Lineament from Aerial Photograph Interpretation
- Minor Lineament from Aerial Photograph Interpretation
- Past Drilling Records (source DDCA, SIDA)
D = Depth (GL-m), SWL = Static Water Level (GL-m), Yield = m³/h, WS = Water Struck Depth (GL-m)

Survey Date	District	ID	Village	Population	Access	Topographic, Geological Overview	Existing Water Source					Alternative Bore Hole Location					Attended Villager			
							Condition of Water Source	Type of Source	Coordination	Function	Seasonal	Remarks	BH Number	Coordination	Description of Selected point (Geology, Topography, Structure)	Score (probability of yielding well)		Remarks		
2006/3/26	Tarime	24	Nyankunguru	4,438	1h 10 min from Tarime town through paved road and rough road.	Along the fault cliff. North faces to the crest of cliff and gentle slope - flatland at north bounded by Mara river. Volcanic rocks (Basalt) at low ridges and gneiss at north.	Total of 36 springs and stream pond, of which 14 springs are permanent source.	Spring 1	668183	9844768	-	no	Oosing out from the taulus deposit at the toe of fault cliff.	BH1	664624	9841290	At the top of low lying hill with col. Andesite outcrops are abundant.	B	Road rehabilitation will be required. Req.RS	Secretary of WUG: Nashon Muita.
														BH2	665395	9841438	At the side of wide but small valley. Some pebbles of angular quartz are found in the area.	C	Road rehabilitation will be required. Req.RS	
														BH3	669139	9843224	At the side of the road with some outcrops of basalt.	C	Road rehabilitation will be required. Req.RS	
														BH4	665377	5844758	At small depression of upper side of valley. Basalt (pillow lava) distributes at the area.	A		
														BH5	665150	9846650	Between fault cliff and volcanic hill. Col. Fan deposit distributes.	A	Road construction will be required.	
														BH6	667860	9844828	At the small depression of gentle slope with some basalt outcrops.	A	Road rehabilitation will be required.	



Groundwater Development Plan

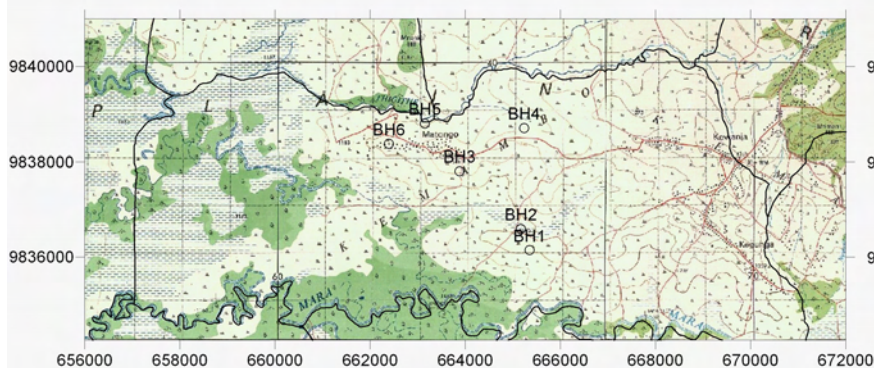


Lineament Map

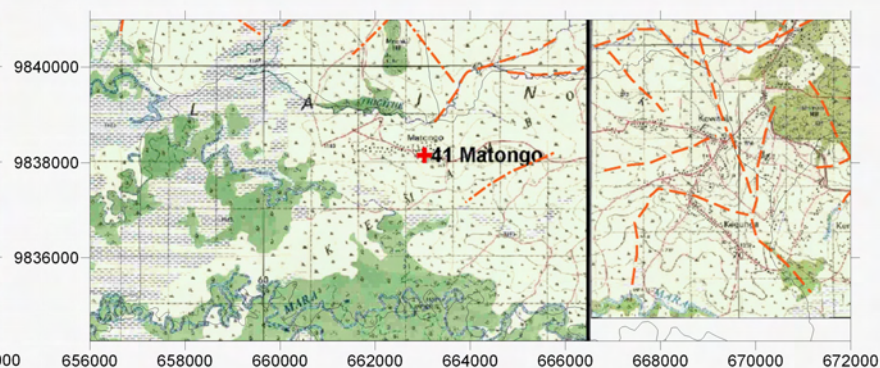
LEGEND

- Existing Water Source
- Alternative Bore Hole Site
- Recommended Site for the Drilling
- Village Boundary from Statics Office (2004)
- Estimated Village Boundary at Survey (March 2006)
- Clear Lineament from Aerial Photograph Interpretation
- Minor Lineament from Aerial Photograph Interpretation
- Past Drilling Records (source DDCA, SIDA)
D = Depth (GL-m), SWL = Static Water Level (GL-m), Yield = m³/h, WS = Water Struck Depth (GL-m)
- Trace Lineament from Aerial Photograph Interpretation

Survey Date	District	ID	Village	Population	Access	Topographic, Geological Overview	Existing Water Source					Alternative Bore Hole Location					Attended Villager				
							Condition of Water Source	Type of Source	Coordination	Function	Seasonal	Remarks	BH Number	Coordination	Description of Selected point (Geology, Topography, Structure)	Score (probability of yielding well)		Remarks			
2006/3/25	Tarime	41	Matongo	3,175	1 h 10 min from Tarime town through rough and bumpy road.	Generally, low profile hills and ridges with swamp and rever deposits. Hills are consist of quartzite and chart.	No facilities for water supply. Villagers depend on its water source to the Mara river, but they think that the water quality is risky because of the mine activity.							BH1	665352 9836144	At the high profile of the hill with quartzite at col structure.	B	Req. RS	WEO: Lival Nkororo, VC: Jhon Nyangi		
																BH2	665165 9836594	At the center of the valley with quartz pebbles and grey sandy soil.		B	Road rehabilitation will be required.
																BH3	663877 9837806	At the side of the hill. Small col structure. Alternation of quartzite and shist.		C	Req. RS
																BH4	665238 9838702	On the clear lineament.		B	Road rehabilitation will be required.
																BH5	663150 9838800	Side of Thigthe river. Quartz rich metamorphics (gneiss) distributes at hill side.		A	Road rehabilitation will be required.
																BH6	662395 9838370	Almost flat hill side. Laterite and Weathered quartzitic rocks.		C	Req. RS



Groundwater Development Plan



Lineament Map

LEGEND

- Existing Water Source
- Alternative Bore Hole Site
- Recommended Site for the Drilling
- Village Boundary from Statics Office (2004)
- Estimated Village Boundary at Survey (March 2006)
- Clear Lineament from Aerial Photograph Interpretation
- Minor Lineament from Aerial Photograph Interpretation
- Past Drilling Records (source DDCA, SIDA)
- D = Depth (GL-m), SWL = Static Water Level (GL-m), Yield = m³/h, WS = Water Struck Depth (GL-m)