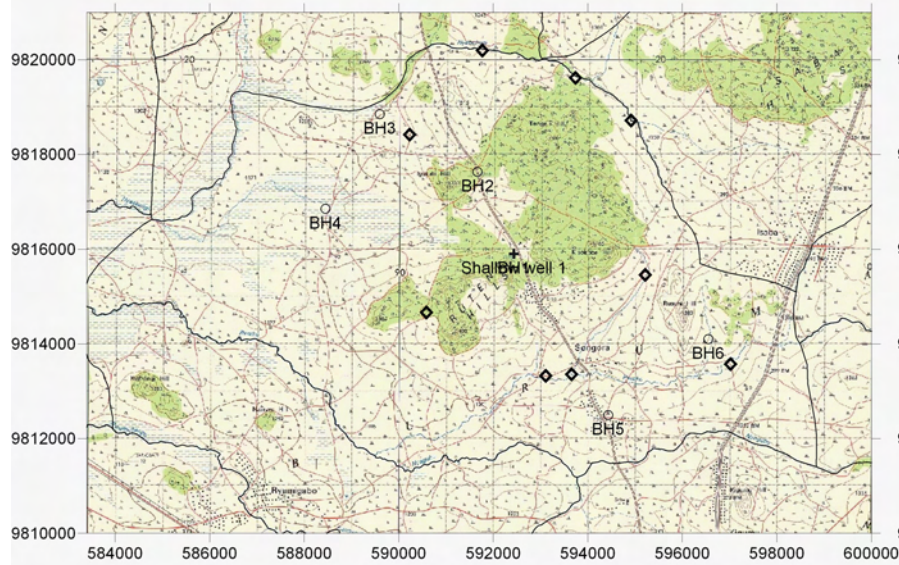
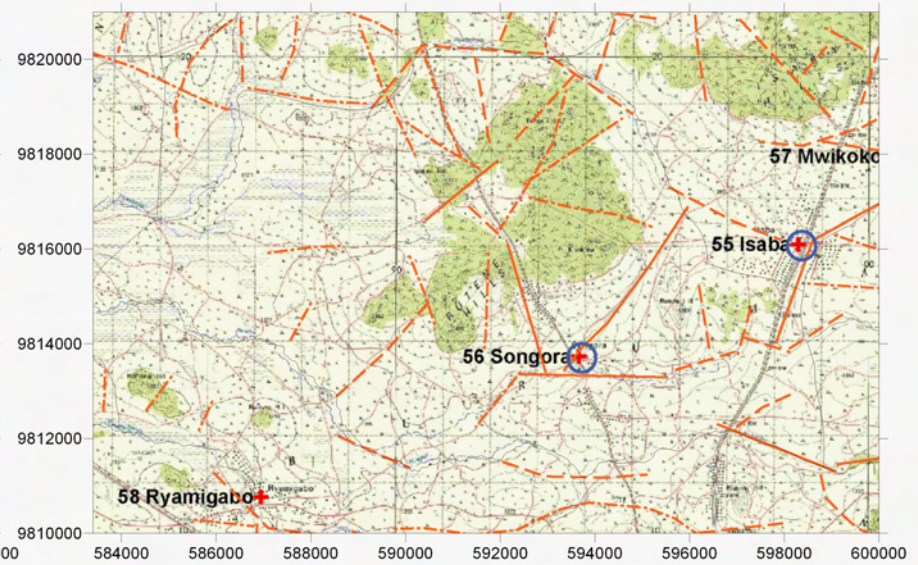


Survey Date	District	ID	Village	Population	Access	Topographic, Geological Overview	Condition of Water Source	Existing Water Source					Alternative Bore Hole Location							
								Type of Source	Coordination	Function	Seasonal	Remarks	BH Number	Coordination	Description of Selected point (Geology, Topography, Structure)	Score (probability of yielding wells)	Remarks	Attended Villager		
2006/3/30	Musoma	56	Songora	5,984	30 min through paved road and 20 min through rough road from the junction of Kiyabakari.	Granite inserbergs distribute at the eastern portion. Valleys, low lying hills and swamps at the western portion. Clear lineaments can be observed mainly at eastern area.	There are some local springs and ponds, but most of them are dry up in dry season. One shallow well (open hole) is only a source during dry season.	BH1	592438	9815908	no	no	The pump has been broken. Japanese agriculture aid made in 1974, according to the villagers.	BH1	592438	9815908	Between two granite inserberg, col structure. Granite boulders are found.	A		VC
								Shallow well 1	592438	9815908	no	no	The pump has been broken. Japanese agriculture aid made in 1975, according to the villagers.	BH2	591670	9817634	Surrounded by granite inserberg. The valley with small depression. At col.	A		
														BH3	589600	9818850	At the intersection of two valleys with clear lineament. Side of granite inserberg.	A	Road rehabilitation required.	
														BH4	588450	9816850	At the wide valley with minor lineament. The center of the valley will be swamp at rainy season.	B	Road construction required.	
														BH5	594433	9812496	Upper portion of small depression. Wide valley.	C	Road rehabilitation required. Req. RS	
														BH6	596550	9814100	Between granite inserberg and volcanics(?). On the clear lineament.	A	Road construction required.	



Groundwater Development Plan

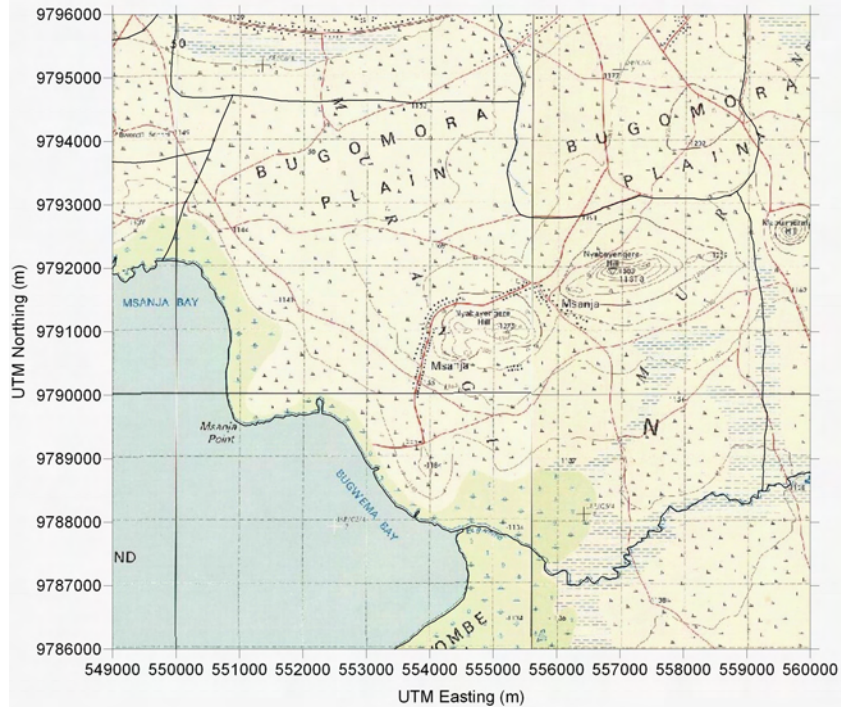


Lineament Map

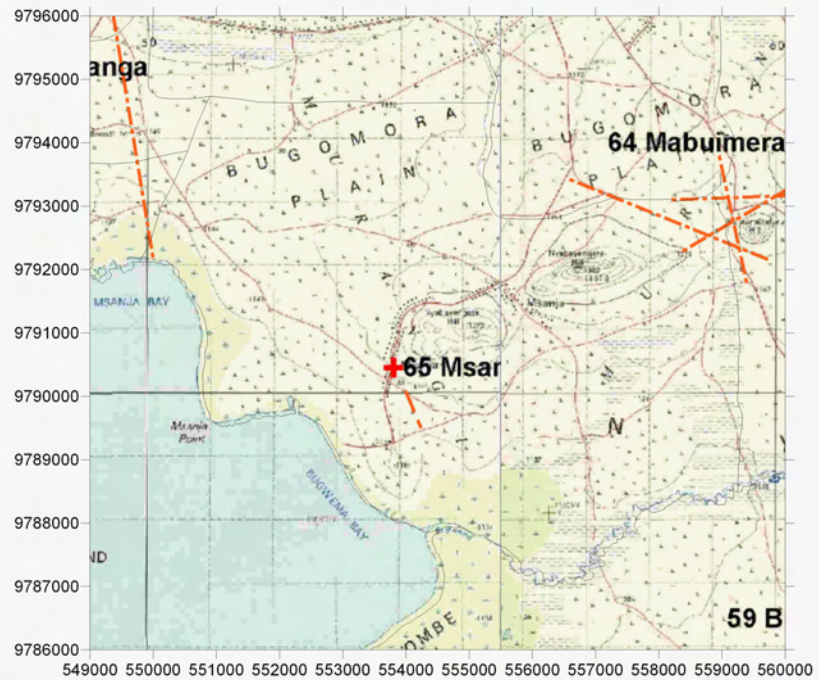
LEGEND

- Existing Water Source
- Village Boundary from Statics Office (2004)
- Estimated Village Boundary at Survey (March 2006)
- Clear Lineament from Aerial Photograph Interpretation
- Minor Lineament from Aerial Photograph Interpretation
- Past Drilling Records (source DDCA, SIDA)
- D = Depth (GL-m), SWL = Static Water Level (GL-m), Yield = m<sup>3</sup>/h, WS = Water Struck Depth (GL-m)

Survey Date	District	ID	Village	Population	Access	Topographic, Geological Overview	Existing Water Source					Alternative Bore Hole Location					Attended Villager		
							Condition of Water Source	Type of Source	Coordination	Function	Seasonal	Remarks	BH Number	Coordination	Description of Selected point (Geology, Topography, Structure)	SCORE (probability of yielding water)		Remarks	
2006/4/1	Musoma	65	Musanja	4,191	Almost 2 h drive from Bunda through rough and bumpy road.	Hill and ridges of Metamorphic rock member. Mafic rich. Gentle slope at the hillside. Lineaments are not clearly recognized.	4 local springs which are no water in the dry season. Although the village faces to the Lake Victoria, water is not able to fetch due to swampy nature of the lake shore.	Lake Victoria	-	-	-	-	Due to the swamp lake shore, the villagers fetch water from the other side of the cape of 8 km distance from the village.	-	-	Due to covered with thick clay, most of the points fall into C category.			VC: Joel Magoti



Groundwater Development Plan

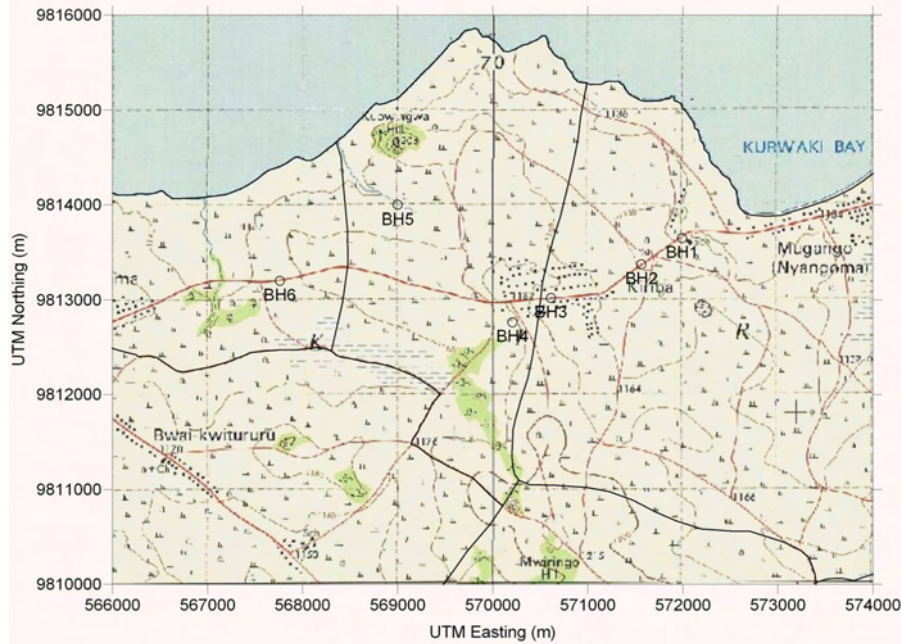


Lineament Map

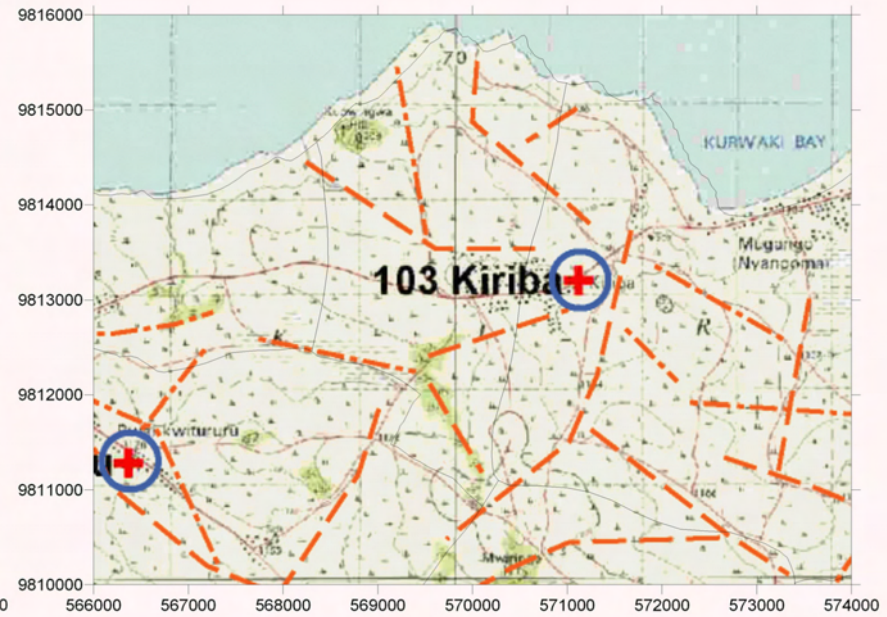
LEGEND

- Existing Water Source
- Alternative Bore Hole Site
- Recommended Site for the Drilling
- Village Boundary from Statics Office (2004)
- Estimated Village Boundary at Survey (March 2006)
- Clear Lineament from Aerial Photograph Interpretation
- Minor Lineament from Aerial Photograph Interpretation
- Trace Lineament from Aerial Photograph Interpretation
- Past Drilling Records (source DDCA, SIDA)  
D = Depth (GL-m), SWL = Static Water Level (GL-m), Yield = m<sup>3</sup>/h, WS = Water Struck Depth (GL-m)

Survey Date	District	ID	Village	Population	Access	Topographic, Geological Overview	Existing Water Source					Alternative Bore Hole Location								
							Condition of Water Source	Type of Source	Coordination	Function	Seasonal	Remarks	BH Number	Coordination	Description of Selected point (Geology, Topography, Structure)	score (probability of yielding water)	Remarks	Attended Villager		
2006/4/1	Musoma	103	Kiriba	2,955	1 h 40 min from Bunda through rough road. The road is generally in good condition.	Mainly consist of low profile hills and ridges of granite. Wide valley with gentle slope is abundant. No clear lineaments.	1 Shallow Well and several springs exist in the village which are dry up in dry season. The villagers depend on the water source at Lake Victoria.	Lake Victoria	-	-	-	-	The village facing to the Lake Victoria. Within 5 km.	BH1	571992	9813652	At the small depression of the valley.	C	Req. RS	VEO
														BH2	571565	9813376	Almost flatland.	C	Req. RS	
														BH3	570612	9813020	At the valley center.	B	Road construction required.	
														BH4	570208	9812764	At the cross section of two valley.	B	Road construction required.	
														BH5	569000	9814000	At the valley center.	B	Road construction required.	
														BH6	567760	9813200	At the top of the hill.	C	Req. RS	



Groundwater Development Plan



Lineament Map

LEGEND

- Existing Water Source
- Alternative Bore Hole Site
- Recommended Site for the Drilling
- Village Boundary from Statics Office (2004)
- Estimated Village Boundary at Survey (March 2006)
- Clear Lineament from Aerial Photograph Interpretation
- Minor Lineament from Aerial Photograph Interpretation
- Trace Lineament from Aerial Photograph Interpretation
- Past Drilling Records (source DDCA, SIDA)  
D = Depth (GL-m), SWL = Static Water Level (GL-m), Yield = m<sup>3</sup>/h, WS = Water Struck Depth (GL-m)