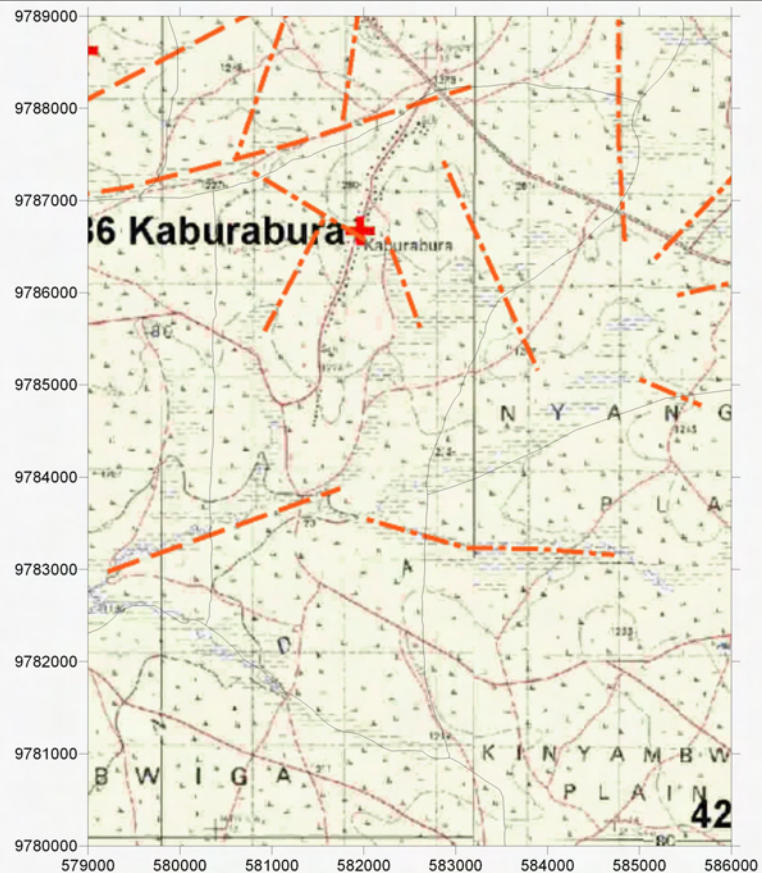
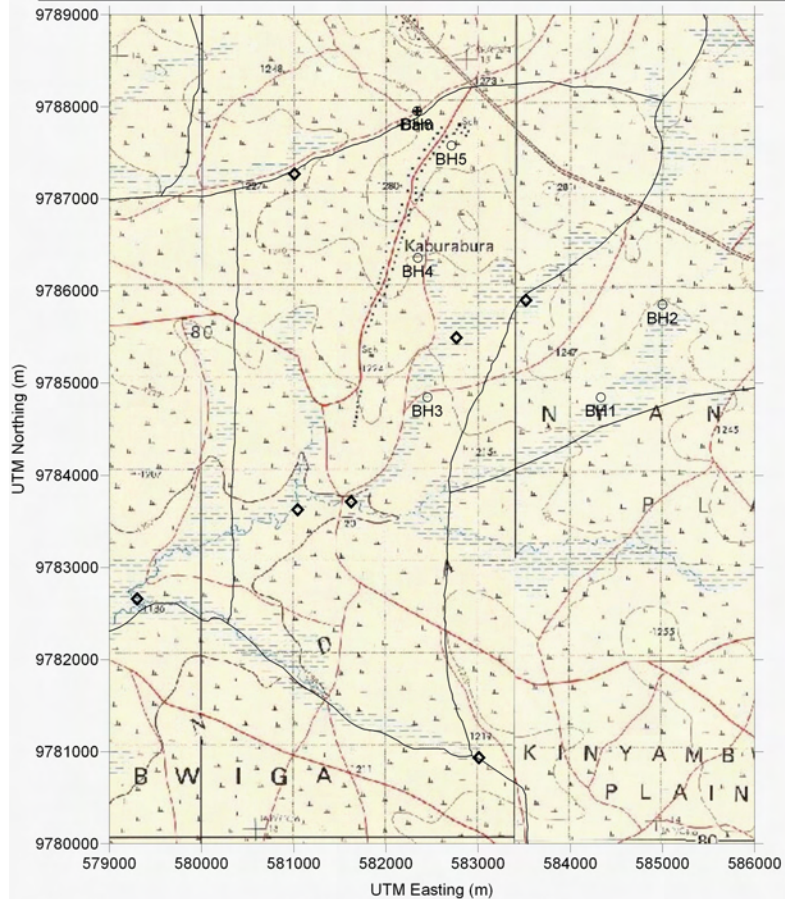


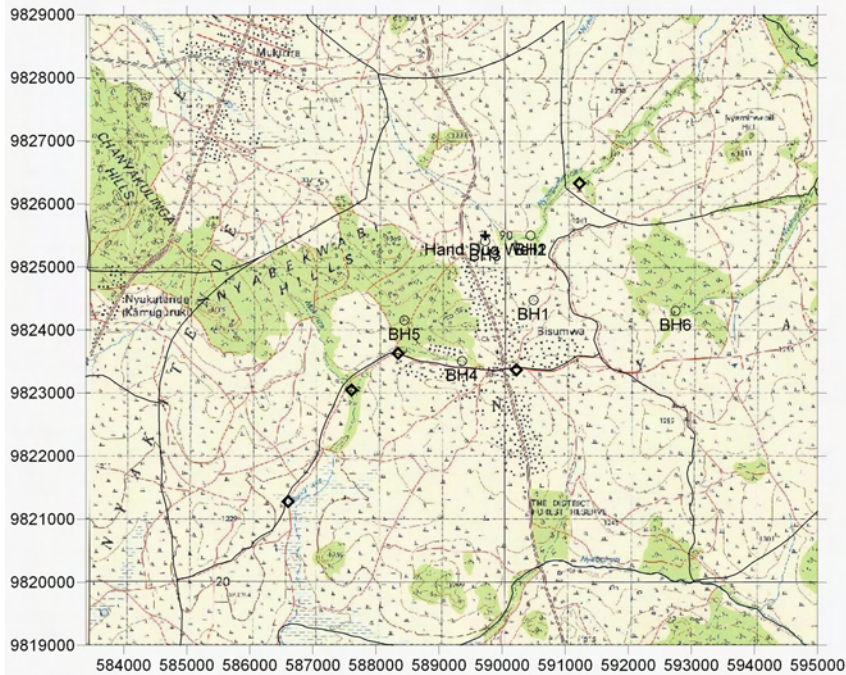
Survey Date	District	ID	Village	Population	Access	Topographic, Geological Overview	Condition of Water Source	Existing Water Source					Alternative Bore Hole Location					Attended Villager		
								Type of Source	Coordination	Function	Seasonal	Remarks	BH Number	Coordination	Description of Selected point (Geology, Topography, Structure)	Score (probability of yielding well)	Remarks			
2006/3/31	Musoma	36	Kaburabura	1,825	20 min from Bunda through some paved road and rough road with good condition.	Almost flatland with little undulation. Wide valleys developed at direction of NE	Only some seasonal open dugwells and dams. No reliable water source. Villagers fetch water from neighbouring villages.	Dam	582339	9787954	-	yes	At the basin surrounded by the hills. Almost flatland.	BH1	584332	9784844	Almost flatland. Some thick plant growth with Mbuga clay.	C	Road rehabilitation required. Req. RS	VEO. George V. Stima
														BH2	585000	9785850	Same valley with BH1. Upper portion. Mbuga clay and quartz rich	C	Req. RS	
														BH3	582450	9784844	At the center of wide valley with trace lineament.	C	Road construction required. Req. RS	
														BH4	582347	9786358	Upper side of the same valley of BH3.	B	Road construction required. Req. RS	
														BH5	582709	9787580	At the hilltop. Close of the village center. Flatland.	C	Req. RS	
														BH6	582339	9787954	Flatland. Surrounded by small hills. No depression. Side of the dam.	C	Req. RS	



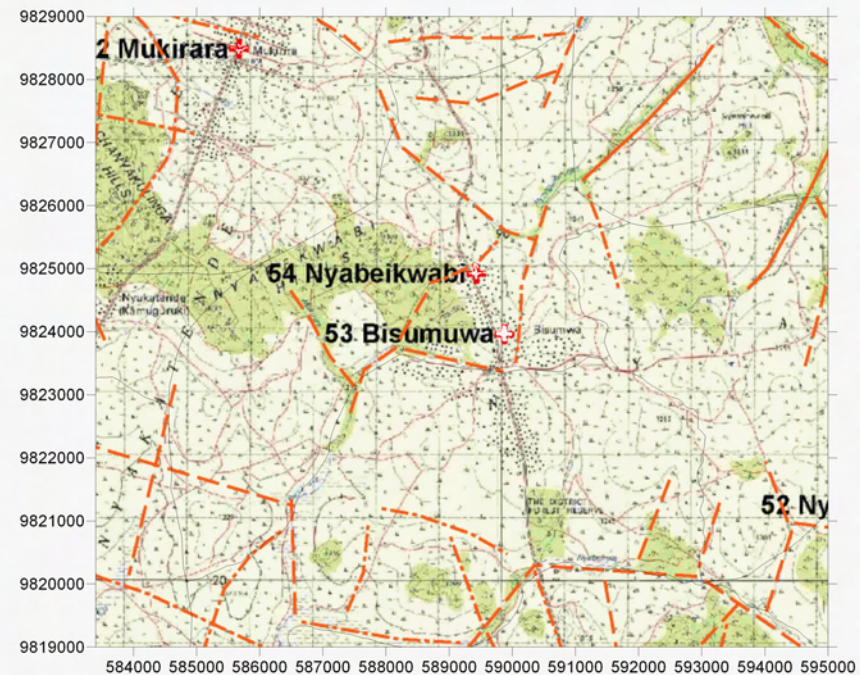
LEGEND

- | | | |
|--------------------------------------------|-------------------------------------------------------|--------------------------------------------------------------------------------------------------------------|
| + Existing Water Source | Village Boundary from Statics Office (2004) | Trace Lineament from Aerial Photograph Interpretation |
| ○ Alternative Bore Hole Site | Estimated Village Boundary at Survey (March 2006) | ● Past Drilling Records (source DDCA, SIDA) |
| ◇ Recommended Site for the Drilling | Clear Lineament from Aerial Photograph Interpretation | D = Depth (GL-m), SWL = Static Water Level (GL-m), Yield = m ³ /h, WS = Water Struck Depth (GL-m) |
| | Minor Lineament from Aerial Photograph Interpretation | |

Survey Date	District	ID	Village	Population	Access	Topographic, Geological Overview	Condition of Water Source	Existing Water Source					Alternative Bore Hole Location									
								Type of Source	Coordination	Function	Seasonal	Remarks	BH Number	Coordination	Description of Selected point (Geology, Topography, Structure)	Score (probability of yielding well)	Remarks	Attended Villager				
2006/3/30	Musoma	54	Nyabekwabi	4,345	20 min from Musoma through rough road.	Generally occupied by gentle slopes at side of granite inserberg. Major valleys are developed at direction of NW-SE.	3 permanent local hand dug open wells. However the discharge of these well are limited.	Hand dug well 1	589732	9825500	-	no	Discharge in the dry season is limited.	BH1	590499	9824472	On the clear lineament. Gentle hillside composed of granitic sand and granite outcrops.	B	Road rehabilitation required.			
																BH2	590450	9825500	At the intersection of two valleys with clear lineament. Side of granite inserberg.		A	Road construction required.
																BH3	589732	9825408	At the valley. Granite outcrops (medium grained) distribute at the side of inserberg.		A	
																BH4	589363	9823506	Upper portion of wide valley. On the minor lineament. Weathered granite at the hillside.		B	Road rehabilitation required.
																BH5	588448	9824152	On the clear lineament. Between two granite inserberg.		A	
																BH6	592750	9824300	Wide valley. On the trace lineament.		B	Road construction required.



Groundwater Development Plan

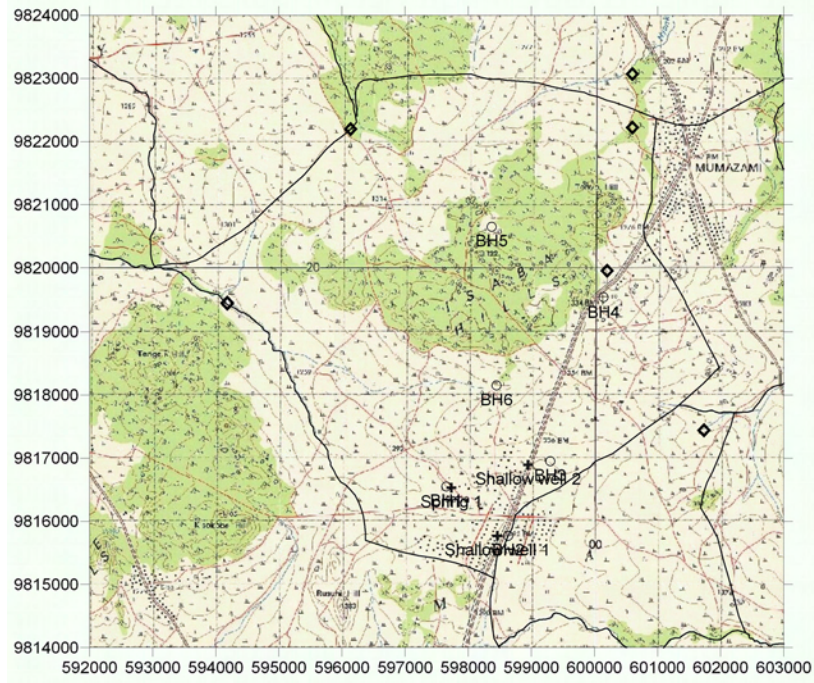


Lineament Map

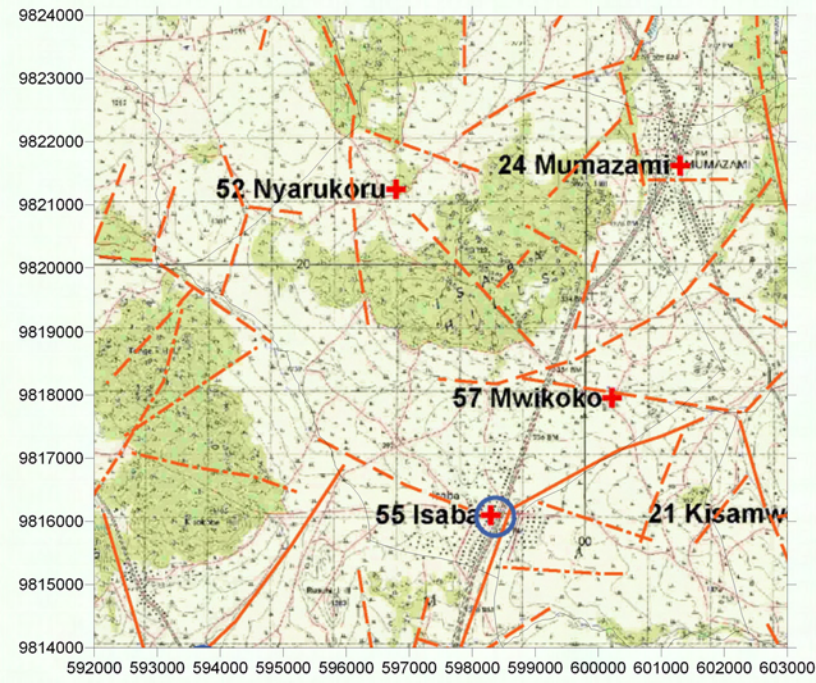
LEGEND

- Existing Water Source
- Alternative Bore Hole Site
- Recommended Site for the Drilling
- Village Boundary from Statics Office (2004)
- Estimated Village Boundary at Survey (March 2006)
- Clear Lineament from Aerial Photograph Interpretation
- Minor Lineament from Aerial Photograph Interpretation
- Past Drilling Records (source DDCA, SIDA)
 D = Depth (GL-m), SWL = Static Water Level (GL-m), Yield = m³/h, WS = Water Struck Depth (GL-m)

Survey Date	District	ID	Village	Population	Access	Topographic, Geological Overview	Condition of Water Source	Existing Water Source					Alternative Bore Hole Location					Attended Villager		
								Type of Source	Coordination	Function	Seasonal	Remarks	BH Number	Coordination	Description of Selected point (Geology, Topography, Structure)	Score (probability of yielding well)	Remarks			
2006/3/31	Musoma	55	Isaba	3,364	25 min through paved road from Musoma.	Isaba hill at the center of the village consist of granite inseberg. The valleys are mostly developed at the direction of NE-SW and NW-SE.	2 shallow wells and local springs. Only one shallow well reserves the water in dry season, but the amount is limited. Villagers visit other villages for water.	Spring 1	597735	9816532	-	yes	Discharge in the dry season is limited.	BH1	597650	9816550	At the hill side with small depression. Close to the local spring with granite sand.	C	Road rehabilitation required. Req. RS	Chairman of Water Committee: Julius Mabila, Member of Water Committee: Jhon Mazala.
								Shallow well 1	598464	9815770	yes	no	HESAWA well. Sittely salty. Discharge is small in dry season.	BH2	598632	9815770	At the center of a valley. Some water pond exist. Laterite outcrops at the side of the hill.	B	Road rehabilitation required. Req. RS	
								Shallow well 2	598949	9816892	yes	yes	HESAWA well. No water in the dry season.	BH3	599300	9816950	At the upper portion of a valley. Under a spring consist of granitic	B	Road rehabilitation required. Req. RS	
														BH4	600146	9819536	Surrounded by granite inseberg. The valley with small depression.	A		
														BH5	598371	9820650	Surrounded by granite inseberg. The valley with small depression.	A	Road construction required.	
														BH6	598450	9818150	At a valley center on the clear lineament. Granite inseberg distributes along the valley side.	A	Road construction required.	



Groundwater Development Plan



Lineament Map

LEGEND

- Existing Water Source
- Alternative Bore Hole Site
- Recommended Site for the Drilling
- Village Boundary from Statics Office (2004)
- Estimated Village Boundary at Survey (March 2006)
- Clear Lineament from Aerial Photograph Interpretation
- Minor Lineament from Aerial Photograph Interpretation
- Past Drilling Records (source DDCA, SIDA)
D = Depth (GL-m), SWL = Static Water Level (GL-m), Yield = m³/h, WS = Water Struck Depth (GL-m)
- Trace Lineament from Aerial Photograph Interpretation