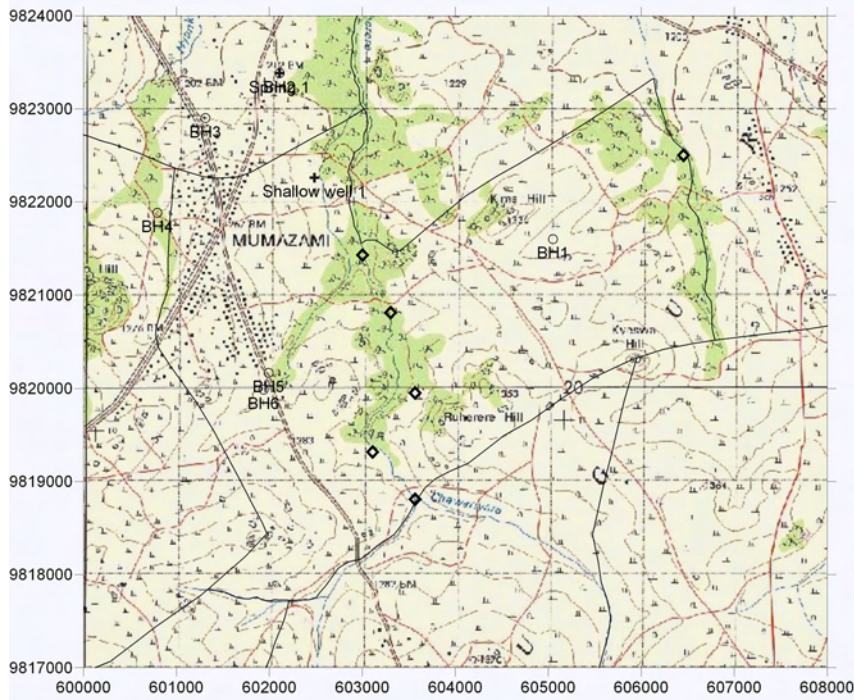
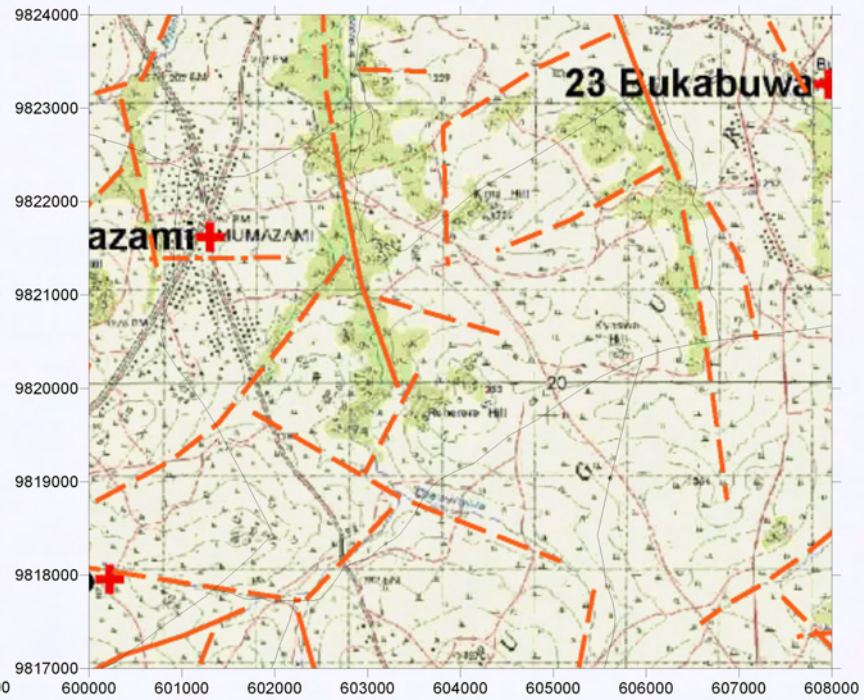


Survey Date	District	ID	Village	Population	Access	Topographic, Geological Overview	Condition of Water Source	Existing Water Source					Alternative Bore Hole Location					Attended Villager			
								Type of Source	Coordination	Function	Seasonal	Remarks	BH Number	Coordination	Description of Selected point (Geology, Topography, Structure)	Score (probability of yielding well)	Remarks				
2006/3/30	Musoma	24	Mmazami	4,058	20 min from Musoma through paved road.	Consist of relatively low profile hills and ridges of granite inserberg. Valley at direction of NE-SW with clear lineament is well developed.	4 Shallow wells and 2 springs of which 1 shallow wells and 2 springs are permanent. Due to the increase of population, 3 water sources is not enough for the villager.	Shallow well 1	602485	9822260	no	yes	Constructed by IFAD program. No water in the dry season.	BH1	605050	9821600	On the valley beside the granite inserberg. On the clear lineament.	A	Road rehabilitation required.	VC: Raphael Komogo. Village Water Committee member: Erege Matiku	
								Spring 1	602108	9823382	-	no	At small depression. Only few amount water can be extracted at dry season.	BH2	602108	9823382	At the side of seasonal spring. Small depression with brownish sand.	B	Road construction required. Req. RS		
															BH3	601313	9822900	At the hillside of a valley. Small depression.	C		Road construction required. Req. RS
															BH4	600796	9821882	At the side of granite inserberg. Wide valley with small depression. Granite outcrops and sand distributes.	B		Road rehabilitation required. Req. RS
															BH5	601991	9820166	At the side of granite inserberg. Granite outcrops and sand distributes at site. On the clear	A		
															BH6	601937	9819986	At the side of granite inserberg. Granite outcrops and sand distributes at site. On the clear	A		



Groundwater Development Plan

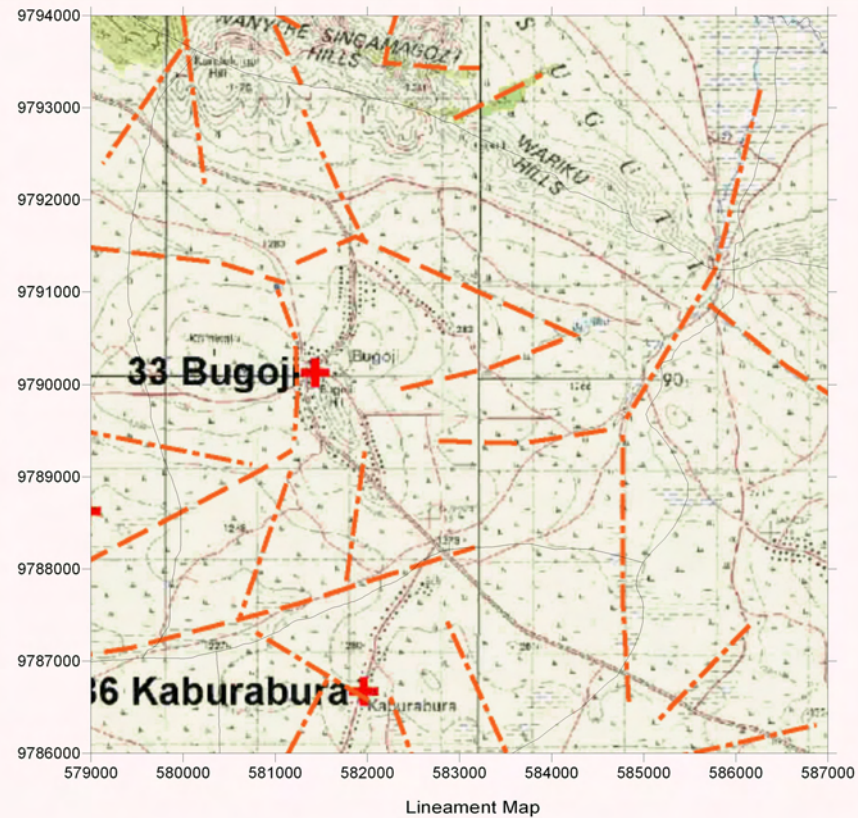
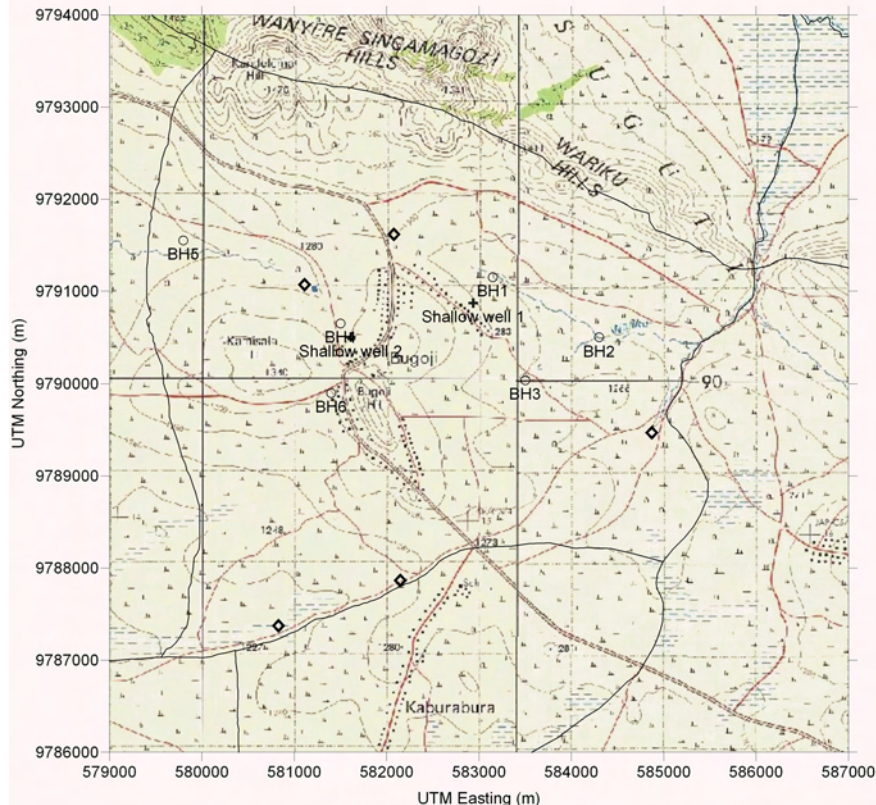


Lineament Map

LEGEND

- |   |                                   |         |   |         |  |         |   |
|---|-----------------------------------|---------|---|---------|--|---------|---|
| + | Existing Water Source             | —       | Village Boundary from Statics Office (2004)           | — — — — | Estimated Village Boundary at Survey (March 2006)  | — — — — | Trace Lineament from Aerial Photograph Interpretation |
| ○ | Alternative Bore Hole Site        | — — — — | Clear Lineament from Aerial Photograph Interpretation | ●       | Past Drilling Records (source DDCA, SIDA)  |         |   |
| ◇ | Recommended Site for the Drilling | — — — — | Minor Lineament from Aerial Photograph Interpretation |         | D = Depth (GL-m), SWL = Static Water Level (GL-m), Yield = m <sup>3</sup> /h, WS = Water Struck Depth (GL-m) |         |   |

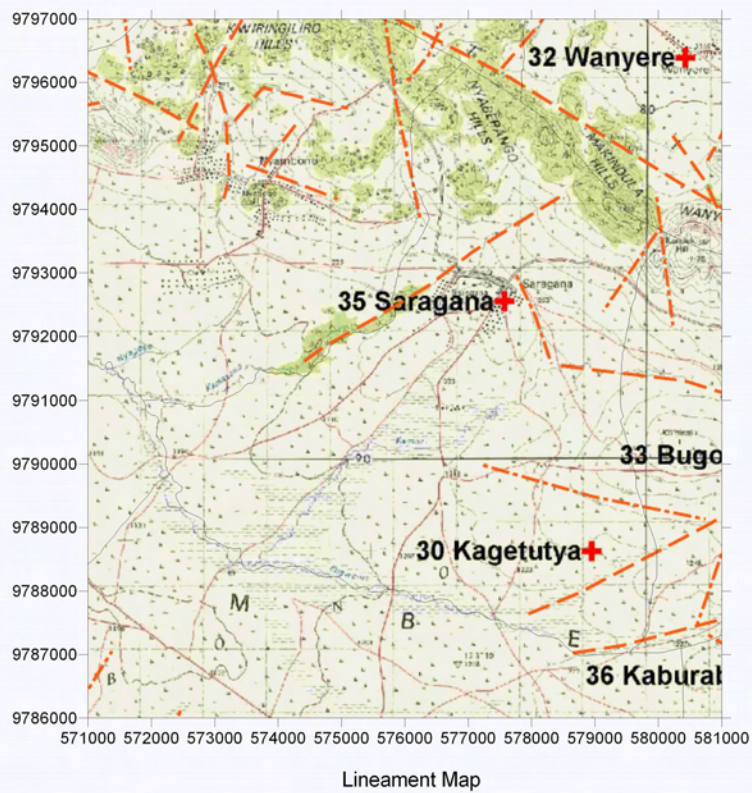
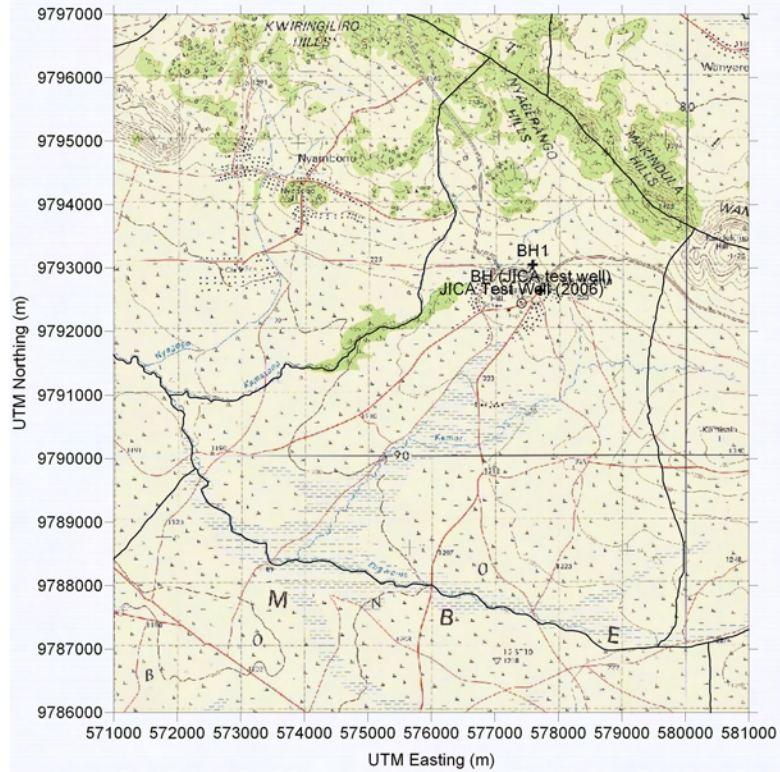
Survey Date	District	ID	Village	Population	Access	Topographic, Geological Overview	Existing Water Source					Alternative Bore Hole Location								
							Condition of Water Source	Type of Source	Coordination	Function	Seasonal	Remarks	BH Number	Coordination	Description of Selected point (Geology, Topography, Structure)	Score (probability of yielding well)	Remarks	Attended Villager		
2006/3/31	Musoma	33	Bugoji	4,423	30 min from Bunda through some paved road and rough road with good condition.	Small hills consist of quartz rich gneiss (Nyanzan series). Mostly occupied by gentle hill slope and flatland.	3 Shallow wells and some local pond and streams are main water source in the wet season. No water source in the dry season. Villagers fetch water from neighbouring villages and buy from water vendors.	Shallow well 1	582938	9790670	yes	yes	Constructed by the councillor. But no water in dry season. The location of the well is technically.	BH1	583150	9791150	At the valley with clear lineament. Quartz rich gneiss at the hillside.	A	Road construction required.	Acting VEO: Bigambo Mahauri.
							Shallow well 2	581611	9790502	yes	yes	Constructed by the councillor. But no water in dry season. The location of the well is technically.	BH2	584300	979050	At the intersection of two valleys with clear lineament. Side of hills of Nyanzan series.	A	Road construction required.		
														BH3	583500	9790038	At the valley with clear lineament. Quartz rich gneiss at the hillside.	B	Road construction required.	
														BH4	581500	9790650	At upper side of the valley. Extension of lineament through col structure.	B	Road construction required.	
														BH5	579800	9791550	At the wide valley between two hills consist of Nyanzan series.	B	Road construction required.	
														BH6	581400	9789900	At extension of trace lineament along the col between two hills of Nyanzan. Outcrops of quartzite can be observed.	B	Req. RS	



LEGEND

- +** Existing Water Source
- Alternative Bore Hole Site
- ◇** Recommended Site for the Drilling
- Village Boundary from Statics Office (2004)
- - -** Estimated Village Boundary at Survey (March 2006)
- Clear Lineament from Aerial Photograph Interpretation
- - -** Minor Lineament from Aerial Photograph Interpretation
- · — ·** Trace Lineament from Aerial Photograph Interpretation
- Past Drilling Records (source DDCA, SIDA)  
D = Depth (GL-m), SWL = Static Water Level (GL-m), Yield = m<sup>3</sup>/h, WS = Water Struck Depth (GL-m)

Survey Date	District	ID	Village	Population	Access	Topographic, Geological Overview	Existing Water Source					Alternative Bore Hole Location						
							Condition of Water Source	Type of Source	Coordination	Function	Seasonal	Remarks	BH Number	Coordination	Description of Selected point (Geology, Topography, Structure)	Score (probability of yielding well)	Remarks	Attended Villager
2006/2/31	Musoma	35	Saragana	3,767	30 min from Bunda through some paved road and rough road with good condition.	North ridges are consist of gneiss and shists of Nyanzan group. Granite in seberg in between. South portion is mainly occupied by gentle slope and wide valleys.	1 BH and some stream ponds. As the BH is not functioning and salty taste, there are no actual water source in dry season.	BH1	577599 9793050	no	no	IFAD well no. 245/200 constructed by China Geo Construction.	BH1		At the 200m south of the JICA Well (2005), to confirm the target yield.	A		
								BH (JICA test well)	577723 9792642	no	no	JICA well drilled in 2006. Confirmed the yield of 50l/min.						



LEGEND

- + Existing Water Source
- Alternative Bore Hole Site
- ◇ Recommended Site for the Drilling
- Village Boundary from Statics Office (2004)
- Estimated Village Boundary at Survey (March 2006)
- Clear Lineament from Aerial Photograph Interpretation
- Minor Lineament from Aerial Photograph Interpretation
- - - - - Trace Lineament from Aerial Photograph Interpretation
- Past Drilling Records (source DDCA, SIDA)  
D = Depth (GL-m), SWL = Static Water Level (GL-m), Yield = m<sup>3</sup>/h, WS = Water Struck Depth (GL-m)