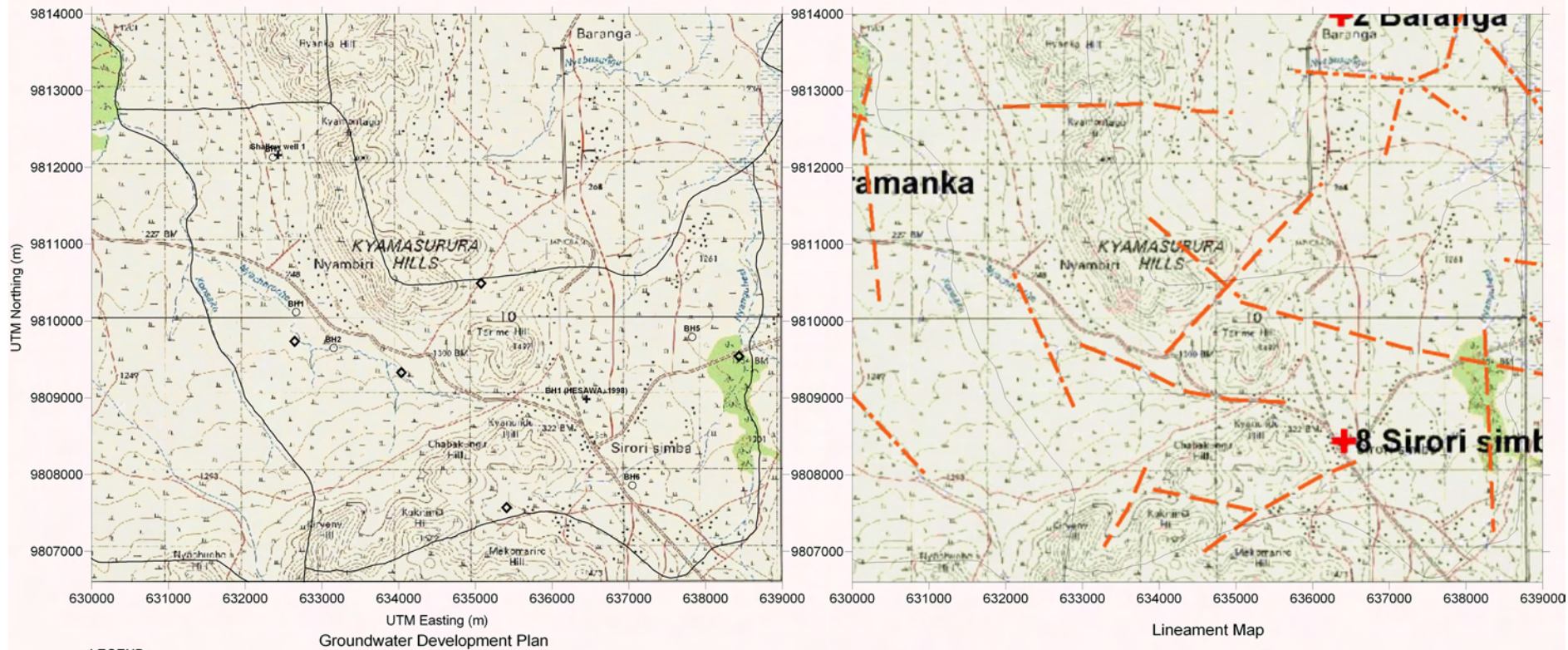


Survey Date	District	ID	Village	Population	Access	Topographic, Geological Overview	Condition of Water Source	Existing Water Source				Alternative Bore Hole Location								
								Type of Source	Coordination	Function	Seasonal	Remarks	BH Number	Coordination	Description of Selected point (Geology, Topography, Structure)	Score (probability of yielding well)	Remarks	Attended Villager		
2006/3/28	Musoma	6	Shirorisimba	3,244	1 h 30 min through rough and bumpy road from Musoma.	Hill and ridges of Metamorphic rock member. Mafic rich. Gentle slope at the hillside. Lineaments are at the col of ridges.	1 BH and 3 Shallow wells. Only BH is functioning during dry season.	Shallow well 1	632426	9812160	yes	yes	Made by HESAWA. No water in the well.	BH1	632663	9810116	At the small depression of the valley. Nyacharoche river	B	Req. RS	VC
								BH1	636449	9808982	yes	no	Made by HESAWA in 1998. About 60 m deep. Provides water through a year.	BH2	633150	9809650	Intersection of two valleys on the minor lineament.	A	Road construction and RS.	
														BH3	632362	9812130	At the gentle hill side under horse shoe shaped valley (catchment)	C	Road rehabilitation required. Req. RS	
														BH4	631150	9814850	At the gentle hill side under horse shoe shaped valley (catchment)	C	Road construction required. Req. RS	
														BH5	637825	9809794	In the small depression. BH by the local miners to confirm the water. Mbuga (black clay soil) distributes.	A	Road rehabilitation required.	
														BH6	637043	9807858	At a small depression of gentis hill side slope. Down side of HESAWA BH.	A		

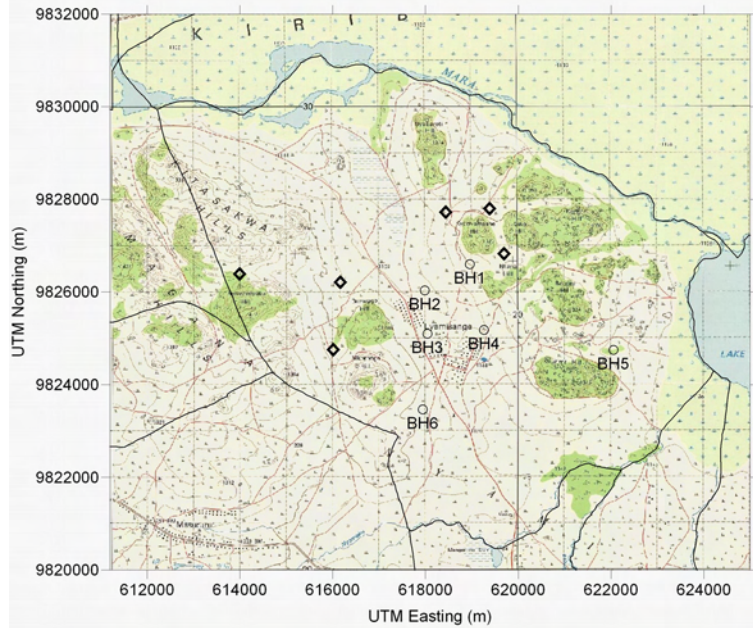
2-25



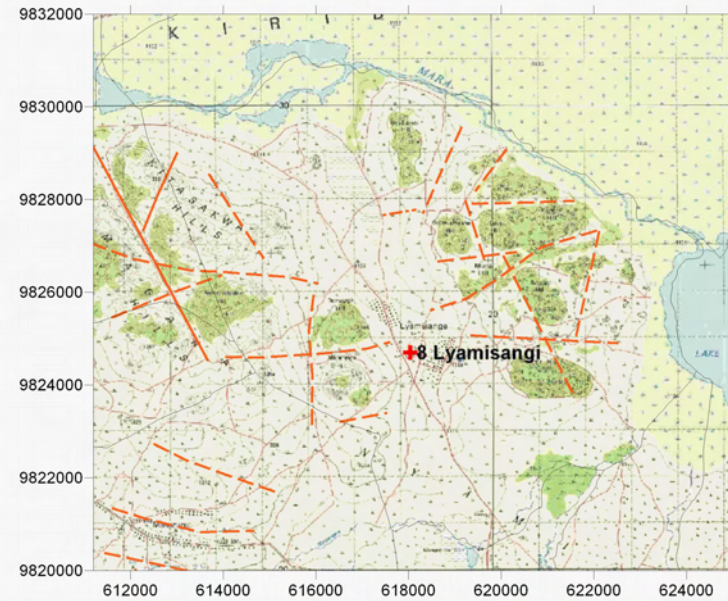
LEGEND

- ✚ Existing Water Source
- Alternative Bore Hole Site
- ◇ Recommended Site for the Drilling
- Village Boundary from Statics Office (2004)
- - - Estimated Village Boundary at Survey (March 2006)
- Clear Lineament from Aerial Photograph Interpretation
- - - Minor Lineament from Aerial Photograph Interpretation
- Past Drilling Records (source DDCA, SIDA)  
D = Depth (GL-m), SWL = Static Water Level (GL-m), Yield = m<sup>3</sup>/h, WS = Water Struck Depth (GL-m)

Survey Date	District	ID	Village	Population	Access	Topographic, Geological Overview	Condition of Water Source	Existing Water Source				Remarks	Alternative Bore Hole Location				Attended Villager		
								Type of Source	Coordination	Function	Seasonal		BH Number	Coordination	Description of Selected point (Geology, Topography, Structure)	Score (probability of yielding wells)		Remarks	
2006/3/29	Musoma	8	Ryamisanga	3,871	1 h drive from Musoma through both paved road and rough road.	Mara river at the north boundary of village. Scattered granite inserberg. Wide valley with gentle slope hills at the center of village.	9 Shallow wells and local springs. All sources are dry up in dry season. Mara river is the only source of water in dry season.						BH1	618956	9826602	At the small depression between a lineament with som granite pebbles. Flat - gentle slope.	B	Req. RS	VEO: Alphonse Mancheyie
													BH2	617985	9826036	Almost flat land at very small depression.	C	Req. RS	
													BH3	618043	9825098	At small depression. Upper side of a valley. Between granite inserberg.	C	Req. RS	
													BH4	619261	9825182	Almost flat land. Some plant grows at surrounding area, and greyish sandy soil. Extension of lineament between inserberg.	B	Req. RS	
													BH5	622050	9824750	Between two inserberg with some traditional stream pond.	A	Road rehabilitation required.	
													BH6	617942	9823464	Flatland at the toe of granite inserberg. Small depression with	C	Req. RS	



Groundwater Development Plan

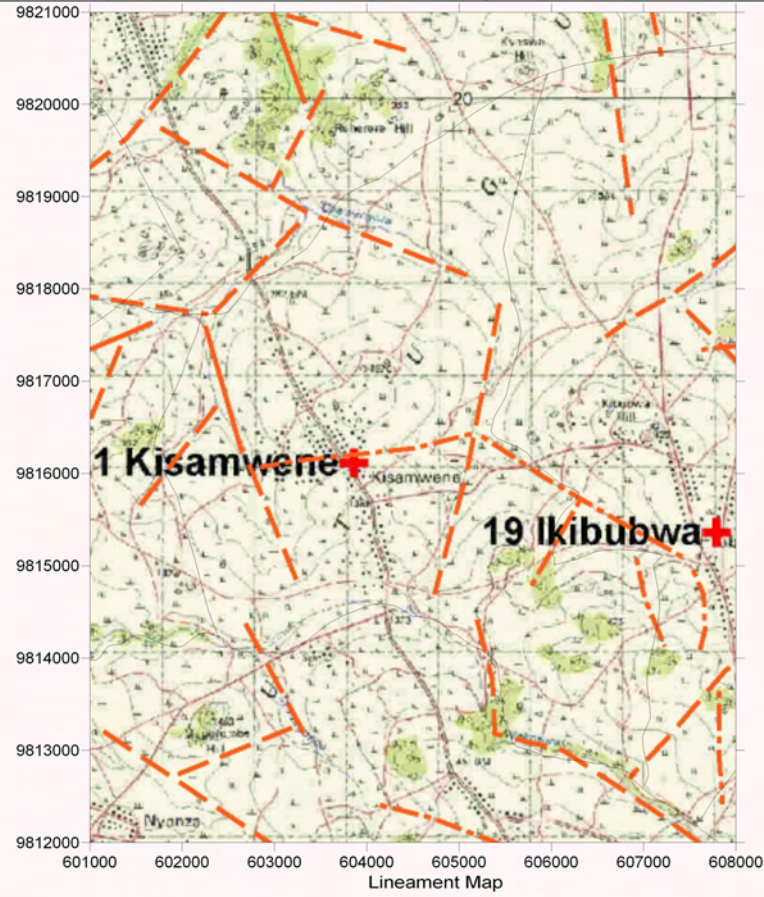
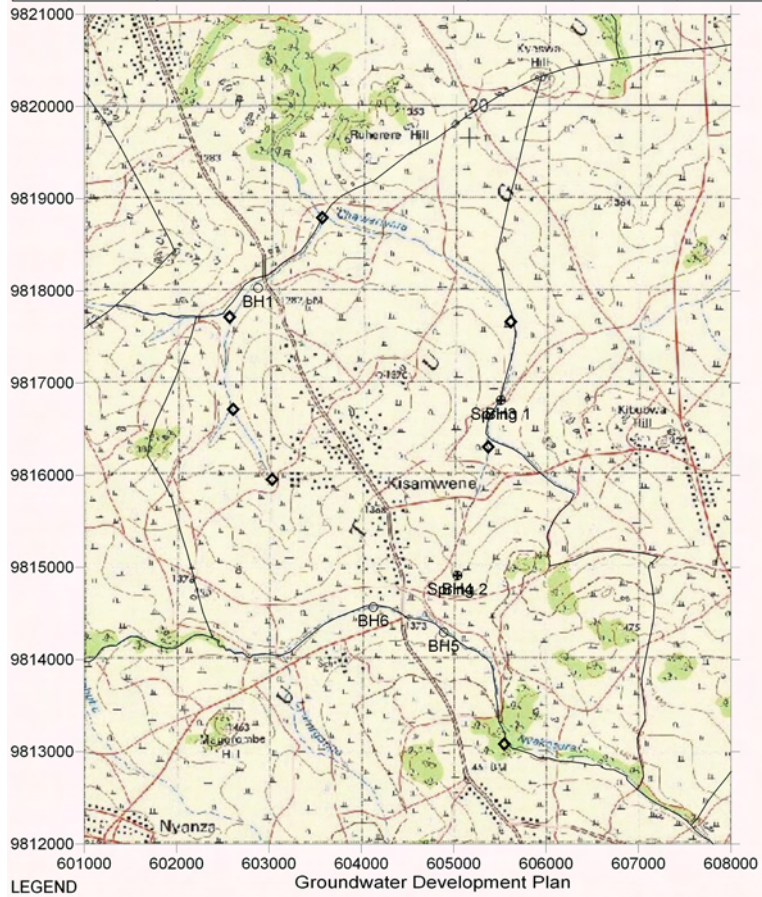


Lineament Map

LEGEND

- Existing Water Source
- Alternative Bore Hole Site
- Recommended Site for the Drilling
- Village Boundary from Statics Office (2004)
- Estimated Village Boundary at Survey (March 2006)
- Clear Lineament from Aerial Photograph Interpretation
- Minor Lineament from Aerial Photograph Interpretation
- Past Drilling Records (source DDCA, SIDA)  
D = Depth (GL-m), SWL = Static Water Level (GL-m), Yield = m<sup>3</sup>/h, WS = Water Struck Depth (GL-m)
- Trace Lineament from Aerial Photograph Interpretation

Survey Date	District	ID	Village	Population	Access	Topographic, Geological Overview	Existing Water Source				Alternative Bore Hole Location									
							Condition of Water Source	Type of Source	Coordination	Function	Seasonal	Remarks	BH Number	Coordination	Description of Selected point (Geology, Topography, Structure)	Score (probability of yielding well)	Remarks	Attended Villager		
2006/3/29	Musoma	21	Kisamwene	4,593	40 min from Musoma through paved road and rough, bumpy road.	Mostly occupied by granite inserberg hills. Main valleys are in NE-SW, NW-SE direction.	8 local spring (mostly in shape of stream pond). No permanent source in the village. Villagers forced to get water from next village in dry season.	Spring 1	605510	9816812	-	yes	At the valley under the granite inserberg. Dries up in dry season.	BH1	602883	9818030	At relatively deep valley. Intersection of two valleys with granitic sand.	A	Road rehabilitation required.	VC: Mwita Charles.
								Spring 2	605039	9814912	-	yes	At the valley under the granite inserberg. Dries up in dry season.	BH2	602650	9810750	At intersection of two lineaments. Between granite inserberg.	A	Road construction required.	
														BH3	605510	9816812	At the valley of toe of the granite inserberg. On the clear lineament. Local stream pond.	A	Road rehabilitation required.	
														BH4	605039	9814912	At the center of wide valley. Granite inserberg at side. Some seasonal ponds around.	B	Road construction required. Req. RS	
														BH5	604891	9814294	In the wide valley consist of recent river deposit.	B	Road rehabilitation required. Req. RS	
														BH6	604129	9814568	At the same valley and lower portion of BH5.	B	Road rehabilitation required. Req. RS	



- |   |         |     |
|---|---------|-----|
| + | —       | --- |
| ○ | - - - - | ●   |
| ◇ | —       |     |
|   | ---     |     |