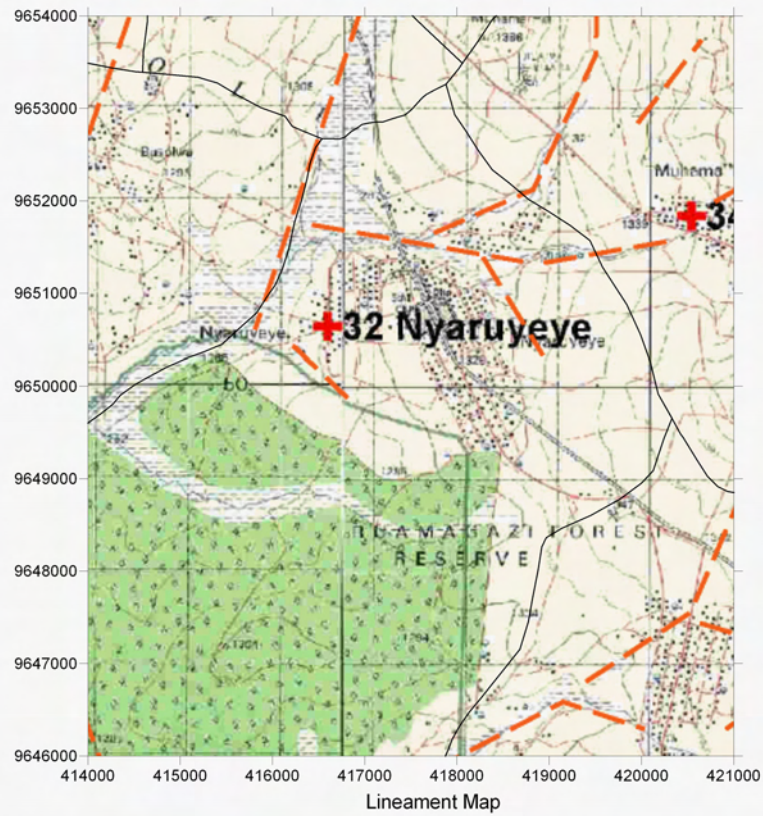
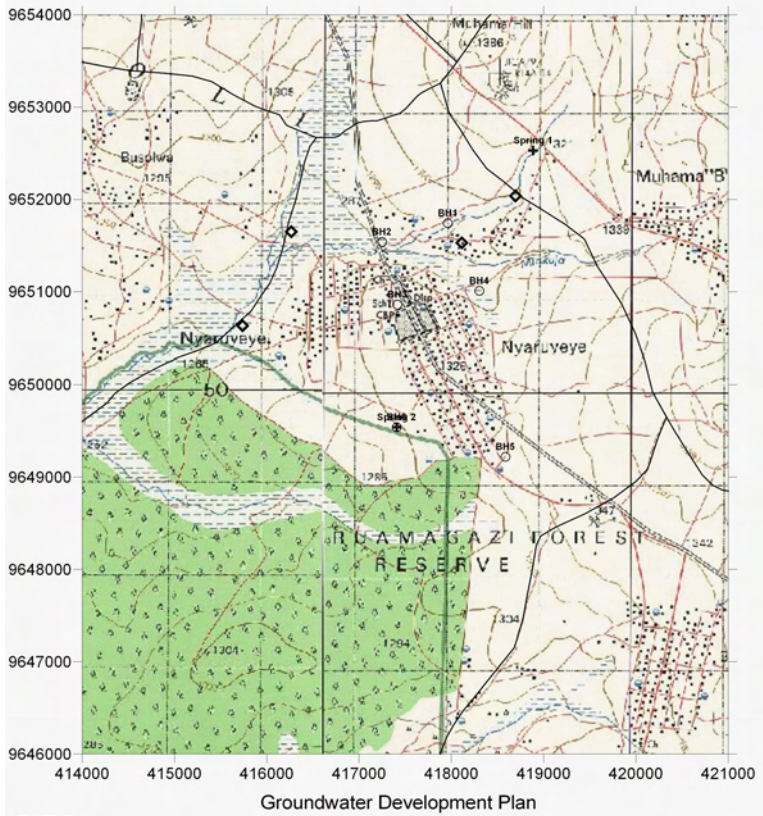


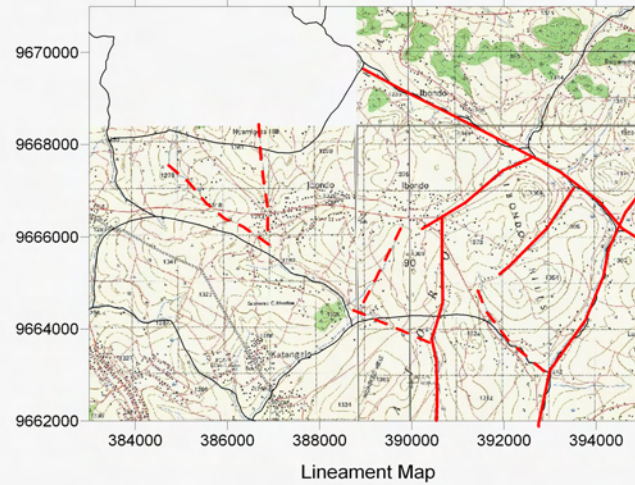
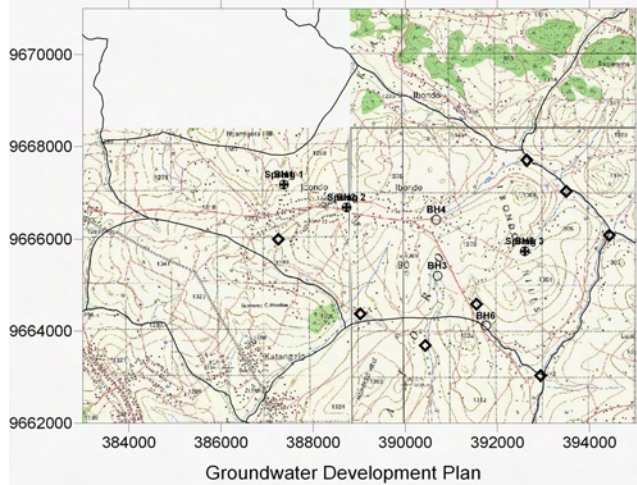
Survey Date	District	ID	Village	Population	Access	Topographic, Geological Overview	Condition of Water Source	Existing Water Source					Alternative Bore Hole Location					Additional Comments, Attended Villager		
								Type of Source	Coordination	Function	Seasonal	Remarks	BH Number	Coordination	Description of Selected point (Geology, Topography, Structure)	Score (probability of yielding well)	Remarks			
2006/3/15	Geita	32	Nyaruyeye	4,106	1h20 min from Geita town. The road is generally in good condition.	The boundary of granite and Nyanzani series (gneiss, chart) exist at the center of the village. Relatively steep hills exist at the northern portion.	3 springs (1 Spring and 2 Stream pond). 2 of them are permanent. 2 charcoal dam.	Spring 1	418886	9652532	yes	no	Discharge of more than 10 l/min seeping out from the ferocrete.	BH1	417961	9651744	At the center of wide valley. Ferocrete at the hill side and the valley consist of grey fine sand.	A		VEO: Musa Nyanda, Member of Village Committee: Arony Nyanda
								Spring 2	417408	9649540	yes	no	Small amount of water extractable in the dry season.	BH2	417248	9651540	Same valley of BH1. Intersection of 2 clear lineament.	A		
														BH3	417416	9650862	At the school yard beside quartz	B		
														BH4	418303	9651010	Small depression of wide valley, Sandy granitic soil.	C	Req RS	
														BH5	418586	9649220	Small depression of wide valley, Sandy granitic soil.	C	Req RS	
														BH6	417408	9649540	Small depression of wide valley, Sandy granitic soil.	B		



LEGEND

- Existing Water Source
- Alternative Bore Hole Site
- Recommended Site for the Drilling
- Village Boundary from Statics Office (2004)
- Estimated Village Boundary at Survey (March 2006)
- Clear Lineament from Aerial Photograph Interpretation
- Minor Lineament from Aerial Photograph Interpretation
- Trace Lineament from Aerial Photograph Interpretation
- Past Drilling Records (source DDCA, SIDA)
D = Depth (GL-m), SWL = Static Water Level (GL-m), Yield = m³/h, WS = Water Struck Depth (GL-m)

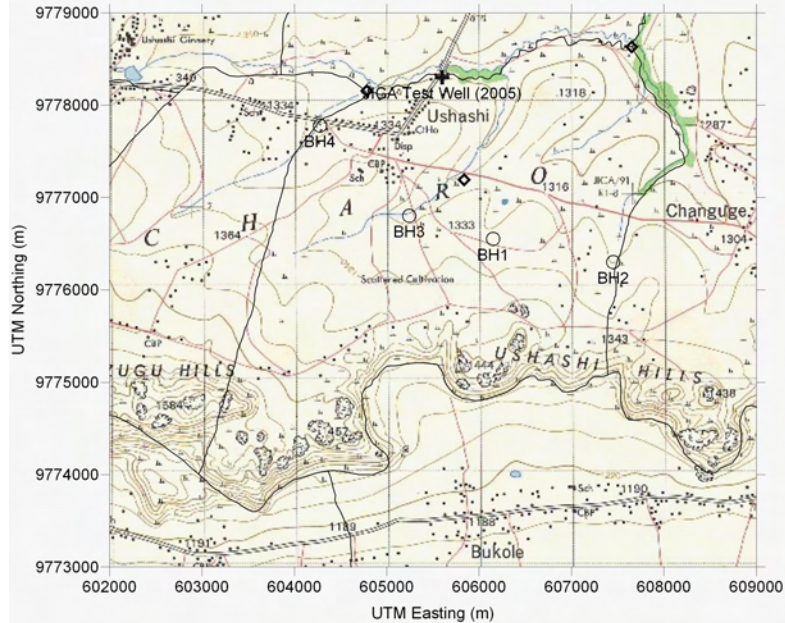
Survey Date	District	ID	Village	Population	Access	Topographic, Geological Overview	Condition of Water Source	Existing Water Source				Alternative Bore Hole Location				Additional Comments, Attended Villager	
								Type of Source	Coordination	Function	Seasonal	Remarks	BH Number	Coordination	Description of Selected point (Geology, Topography, Structure)		Remarks
2006/3/17	Geta	42	Ibondo	5,428	1h30 min through Geta-Kagera road. From the junction of Kataro road is rough and bumpy.	Hilly terrain with Inseinberg. Outcrops of fine granite can commonly found. Clear lineaments exist at the valley.	3 springs (1 Spring and 2 Stream pond). 2 of them are permanent.	Spring 1	387369 9667186	yes	no	Small amount of water extractable in the dry season. Oozing out from the talus or recent deposits (grey sand)	BH1	387369 9667186	At the center of narrow valley. 30 m down side of the spring 1. Laterite at the hill side and the valley consist of grey fine sand.	A	The points selected seems all promising for the groundwater. However, the road condition in the village is bad. According to the village executives, it takes about a month to construct the road by the villagers contribution. VC: Julius Samuel, VEO: William Paulo.
								Spring 2	388728 9666688	yes	no	Oozing out from the boundary of laterite and weathered granite. In the Upper side of narrow valley.	BH2	388728 9666688	At the center of narrow valley. 50 m down side of the spring 2.	A	
								Spring 3	392596 9665738	yes	no	Only small amount observed in dry season.	BH3	390700 9665200	Not reachable by the car, but on the upper side of the valley.	A	
													BH4	390678 9666424	Center of small depression.	A	
													BH5	392596 9665738	Narrow valley on the sharp lineament. Outcrops granite exist at the side of the valley.	A	
													BH6	391754 9664118	Narrow valley on the sharp lineament. Outcrops granite exist at the side of the valley.	A	



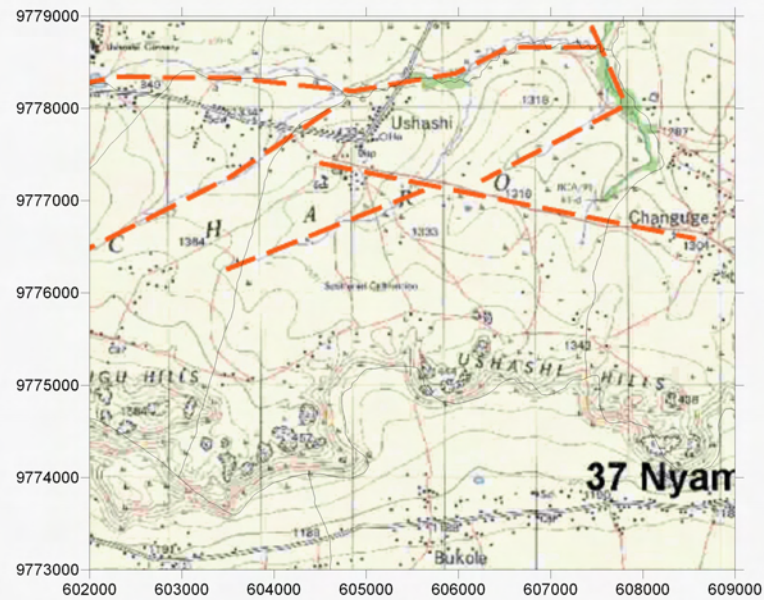
LEGEND

- Existing Water Source
 - Alternative Bore Hole Site
 - Recommended Site for the Drilling
 - Village Boundary from Statics Office (2004)
 - Estimated Village Boundary at Survey (March 2006)
 - Clear Lineament from Aerial Photograph Interpretation
 - Minor Lineament from Aerial Photograph Interpretation
 - Past Drilling Records (source DDCA, SIDA)
- D = Depth (GL-m), SWL = Static Water Level (GL-m), Yield = m³/h, WS = Water Struck Depth (GL-m)

Survey Date	District	ID	Village	Population	Access	Topographic, Geological Overview	Existing Water Source						Alternative Bore Hole Location				Attended Villager			
							Condition of Water Source	Type of Source	Coordination	Function	Seasonal	Remarks	BH Number	Coordination	Description of Selected point (Geology, Topography, Structure)	Score (probability of yielding well)		Remarks		
2006/4/1	Bunda	33	Mcharo	1077 (due to the immigrants, the village population is 2,105 at 2006 according to VEO)	20 min through Bunda through rough and bumpy road.	Granite in-seberg exist at the south portion of the village. The valley exist at the northern section. Widely occupied by gentle hills and slopes with the valley direction of ENE-WSW.	Hand dug wells and improved traditional water source. No water source available at the dry season. The villagers fetch the water from a spring located in the next village (Ingamba B)	JICA test well	605600	9778300	-	no	Good water quality and good yield of 83 l/min. No pump installation.	BH1	606150	9776550	At the small depression of the side of granite in-seberg. Some granite outcrops observed at the side slope of the valley.	B	Road construction required.	VEO: Matwiga Muga
														BH2	607450	9776300	At the small valley of the low portion of granite in-seberg. Weathered granite outcrops observed at the	B	Road rehabilitation required.	
														BH3	605244	9776800	At the valley surrounded by two line of granite in-seberg crest. Mbuga clay and granitic sand.	A	Minor road construction.	
														BH4	604277	9777777	Center of a valley with small depression.	A		



Water Source Development Plan



Lineament Map

LEGEND

- Existing Water Source
- Alternative Bore Hole Site
- Recommended Site for the Drilling
- Past Drilling Records (source DDCA, SIDA)
D = Depth (GL-m), SWL = Static Water Level (GL-m), Yield = m³/h, WS = Water Struck Depth (GL-m)
- Village Boundary from Statics Office (2004)
- Estimated Village Boundary at Survey (March 2006)
- Clear Lineament from Aerial Photograph Interpretation
- Minor Lineament from Aerial Photograph Interpretation
- Trace Lineament from Aerial Photograph Interpretation