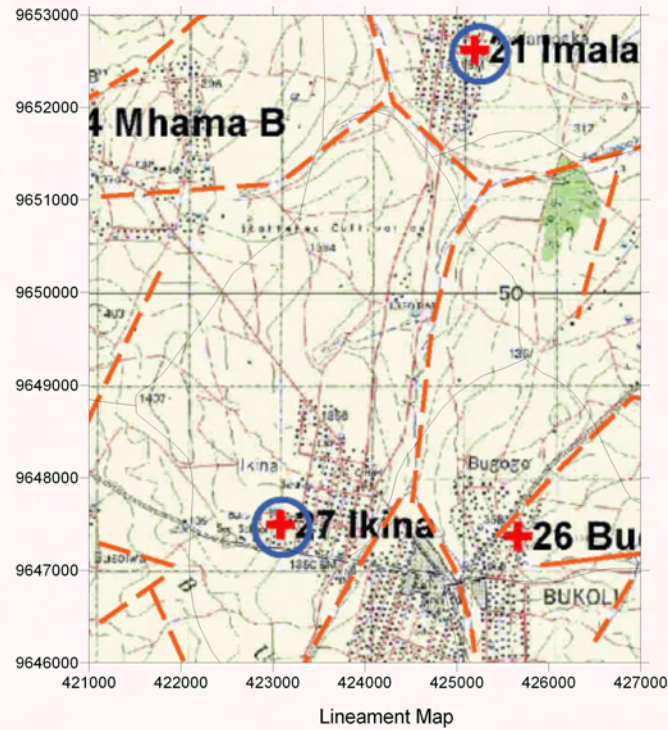
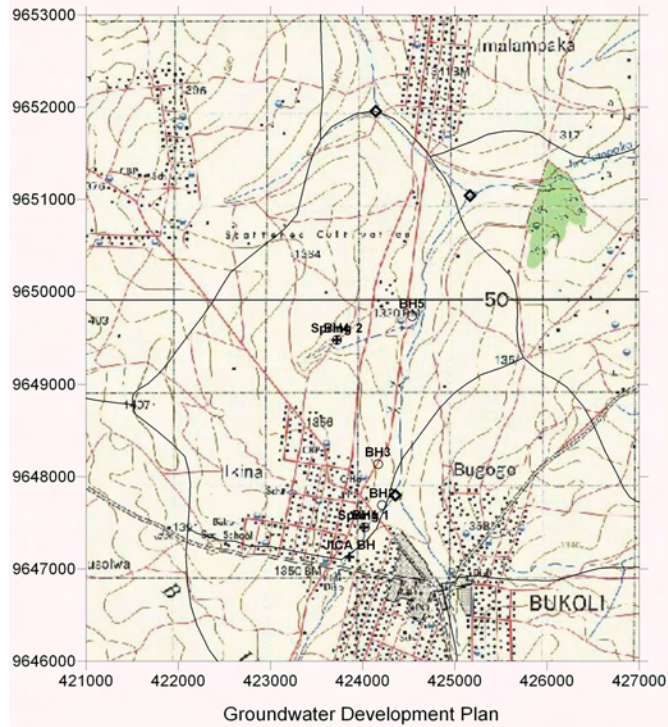


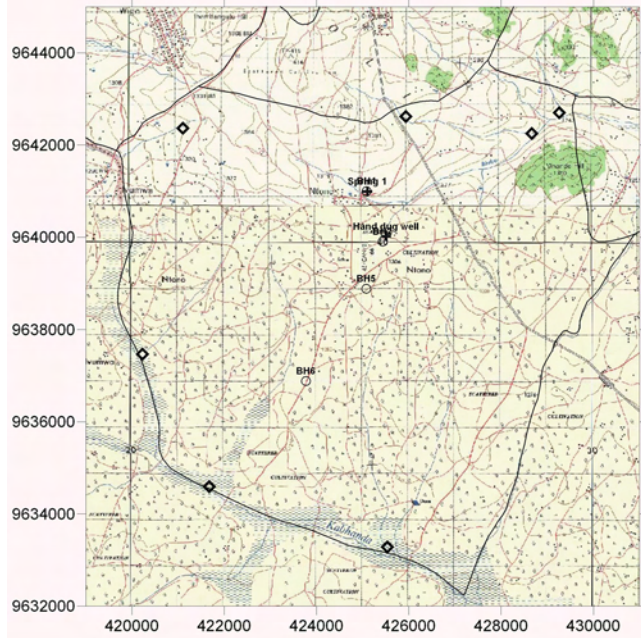
Survey Date	District	ID	Village	Population	Access	Topographic, Geological Overview	Condition of Water Source	Existing Water Source					Alternative Bore Hole Location					Additional Comments, Attended Villager		
								Type of Source	Coordination	Function	Seasonal	Remarks	BH Number	Coordination	Description of Selected point (Geology, Topography, Structure)	Score (probability of yielding well)	Remarks			
2006/3/14	Getta	27	Ikina	1,766	1h from Galla town. The road is generally in good condition	Consist of Granite and its members. Recent deposit of granitic sand distributes along the valleys. 2 major lineaments	1 Spring (permanent), and a stream pond.	Spring 1	424013	9647452	yes	no	Permanent spring.	BH1	424025	9647452	Beside the spring. Intersection of 2 lineament. Lateritic rock and granite out crops at the hill side.	A		VC: Faustin Ntalyo
								Spring 2	423719	9649482	yes	yes	Seeping out from consolidated lateritic rock. Dries up in dry	BH2	424209	9647692	At the same lineament as BH1. At the depression of valley.	A		
								JICA BH	423858	9647130	no	yes	The well itself is located in the territory of Bugogo.	BH3	424167	9648136	At the same lineament as BH2. At the depression of valley.	A		
														BH4	423719	9649482	On the lineament. Consolidated laterite. Downward of spring2	B		
														BH5	424535	9649740	Small depression of wide valley. Sandy granitic soil.	B		



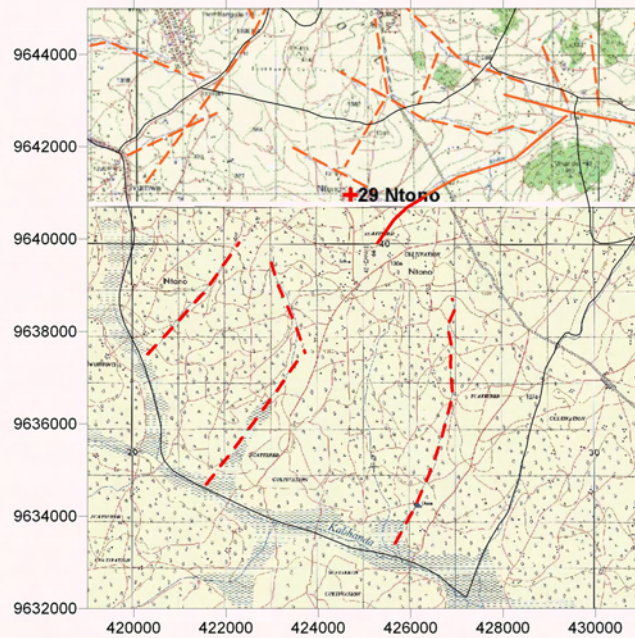
LEGEND

- | | | | | | |
|---|-----------------------------------|---------|---|-----|---|
| + | Existing Water Source | — | Village Boundary from Statics Office (2004) | --- | Trace Lineament from Aerial Photograph Interpretation |
| ○ | Alternative Bore Hole Site | - - - - | Estimated Village Boundary at Survey (March 2006) | — | Clear Lineament from Aerial Photograph Interpretation |
| ◇ | Recommended Site for the Drilling | - - - - | Minor Lineament from Aerial Photograph Interpretation | ● | Past Drilling Records (source DDCA, SIDA)
D = Depth (GL-m), SWL = Static Water Level (GL-m), Yield = m ³ /h, WS = Water Struck Depth (GL-m) |

Survey Date	District	ID	Village	Population	Access	Topographic, Geological Overview	Existing Water Source					Alternative Bore Hole Location								
							Condition of Water Source	Type of Source	Coordination	Function	Seasonal	Remarks	BH Number	Coordination	Description of Selected point (Geology, Topography, Structure)	Score (probability of yielding well)	Remarks	Additional Comments, Attended Villager		
2006/3/13	Geita	29	Ntono	6,898	1h20 min from the Geita town. On the main rout of Geita-Kahama road. It is a rough road but road condition is generally good and the village road is also in good condition.	Consist of Granite, and its secondary deposits. Polous consolidated lateritic rock distributes. The village occupies huge land area, and rarely found outcrops. Almost Flat land.	More than 10 springs or dug wells. Most of the water source available through a year, but the discharge is minimal at the dry season.	Spring 1	425101	9640992	yes	no	Seeping out from the consolidated lateritic rock. Very few water in the dry season.	BH1	425083	9641000	Upper portion of the Spring .On the high end of the valley with trace lineament.	A		VC
								Hand dug well	425506	9640016	yes	yes		BH2	425431	9639906	Covered with granitic sand soil. At the center of wide valley.	B	Req RS	
														BH3	437293	9636406	Flat land. Surrounded by coarse granite outcrops.	B	Req RS	
														BH4	422001	9699924	Flat land with small depression, whitish grey sand at the top soil.	C	Req RS, to move to the valley center may required	
														BH5	425076	9638886	Any indication of water source.	C	Req RS, to move to the valley center may required	
														BH6	423772	9636886	Any indication of water source.	C	Req RS, to move to the valley center may required	



Groundwater Development Plan

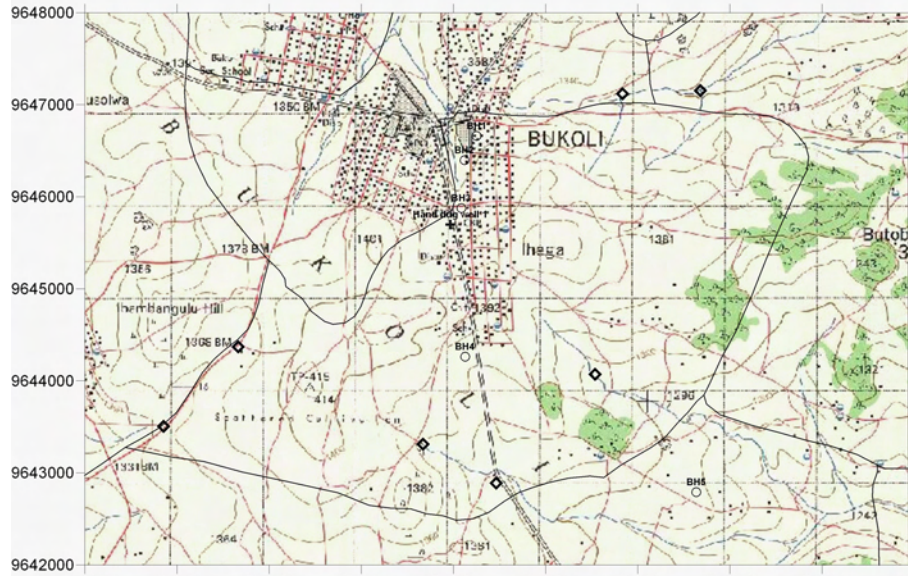


Lineament Map

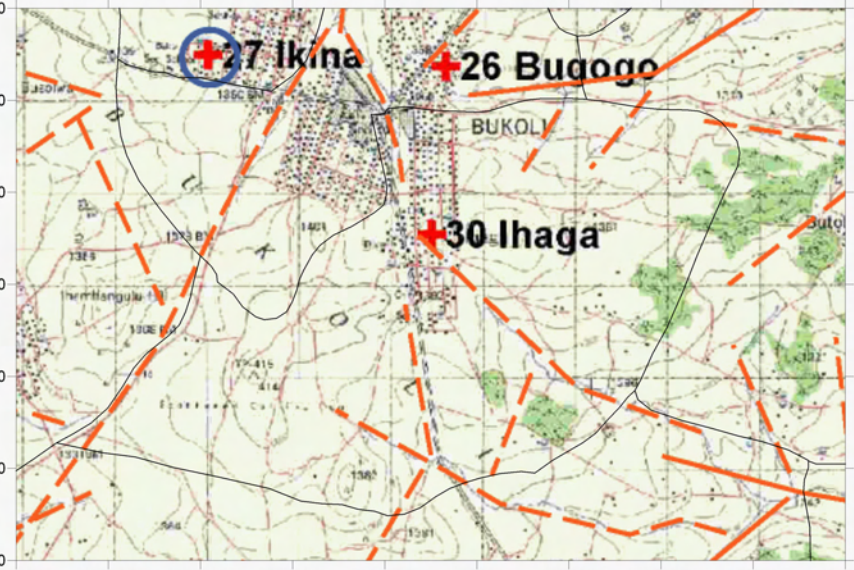
LEGEND

- Existing Water Source
- Alternative Bore Hole Site
- Recommended Site for the Drilling
- Village Boundary from Statics Office (2004)
- Estimated Village Boundary at Survey (March 2006)
- Clear Lineament from Aerial Photograph Interpretation
- Minor Lineament from Aerial Photograph Interpretation
- Past Drilling Records (source DDCA, SIDA)
 D = Depth (GL-m), SWL = Static Water Level (GL-m), Yield = m³/h, WS = Water Struck Depth (GL-m)
- Trace Lineament from Aerial Photograph Interpretation

Survey Date	District	ID	Village	Population	Access	Topographic, Geological Overview	Condition of Water Source	Existing Water Source				Alternative Bore Hole Location								
								Type of Source	Coordination	Function	Seasonal	Remarks	BH Number	Coordination	Description of Selected point (Geology, Topography, Structure)	Score (probability of yielding well)	Remarks	Additional Comments, Attended Villager		
2006/3/14	Geta	30	Ihega	2,807	1h15 min from Geta town. The road is generally in good condition.	Consist of Granite, and its secondary deposits. Polius consolidated lateritic rock distributes. No obvious rigde found in the area and consist of wide valley and gentle hill.	6 springs at the stream line (stream pond), 2 Hand dug wells with no pump facility.	Hand dug well 1	424967	9645698	yes	yes	Depth is about 6m and SWL of 7m. Dug through semi consolidated secondary lateritic gravel. Small amount of water extractable in the dry season.	BH1	425252	9646660	No indication of water source. Flat land.	C	Req RS. to move to the valley center may required	VEO: Paulo Semu, Vice Charman of Village Committee: Rubeni Mtasima. The village is well organized by VEO.
								Hand dug well 2	424789	9654062	yes	yes		BH2	425120	9646398	At small depression with granite boulders and sandy soil.	B	Req RS	
														BH3	425086	9645876	At small depression with granite boulders and sandy soil. Side of main road.	B	Req RS	
														BH4	425127	9644262	At small valley with recent brownish sand.	B	Req RS	
														BH5	427637	9642790	Gentle hill side with some medium grained granite outcrops. Vegetation	B	Req RS	
														BH6	424789	9654062	Center of wide valley. Close to the spring 2	C	Req RS	



Groundwater Development Plan



Lineament Map

LEGEND

- Existing Water Source
- Alternative Bore Hole Site
- Recommended Site for the Drilling
- Village Boundary from Statics Office (2004)
- Estimated Village Boundary at Survey (March 2006)
- Clear Lineament from Aerial Photograph Interpretation
- Minor Lineament from Aerial Photograph Interpretation
- Past Drilling Records (source DDCA, SIDA)
D = Depth (GL-m), SWL = Static Water Level (GL-m), Yield = m³/h, WS = Water Struck Depth (GL-m)
- Trace Lineament from Aerial Photograph Interpretation