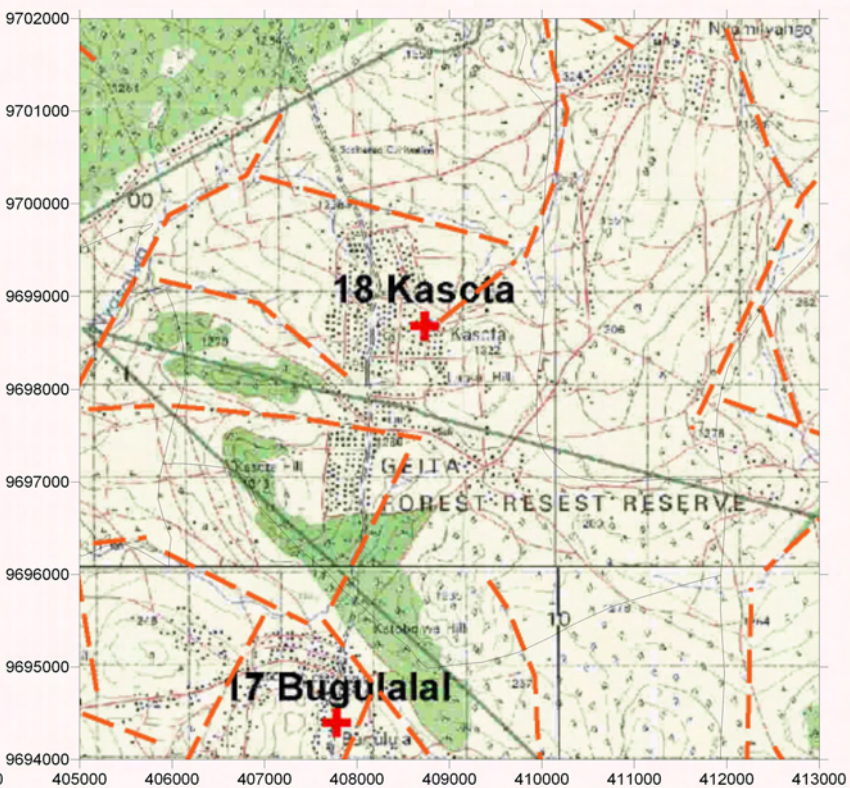
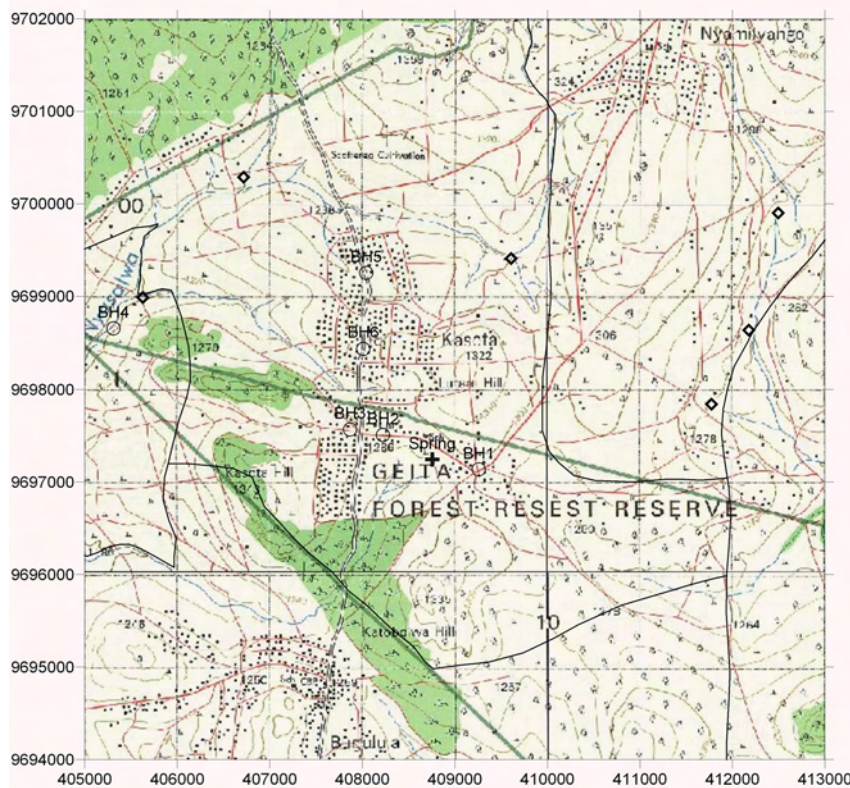


Survey Date	District	ID	Village	Population	Access	Topographic, Geological Overview	Existing Water Source					Alternative Bore Hole Location										
							Condition of Water Source	Type of Source	Coordination	Function	Seasonal	Remarks	BH Number	Coordination	Description of Selected point (Geology, Topography, Structure)	Score (probability of yielding well)	Remarks	Additional Comments, Attended Villager				
2006/3/9	Geita	18	Kasota	7,233	40 min with rough road. Road condition is generally good as some areas are rehabilitated by the Geita Goldmine	Mainly consist of granite hills with some minor valleys trending NW-SE.	8 Springs (5 are seasonal)	Spring	408755	9697244	yes	no	Seeping out from the boundary of semi consolidated taulus and weathered granite. Discharge is about 18l/min if gathered all	BH1	409259	9697136	Flat land on the terrace at extension of a weak lineament. Decomposed granite sand at the top soil.	B		VC		
																BH2	408224	9697510	At the city center with extension of a lineament. Granite outcrops and sand and fine sandy material on the surface.		C	Req RS
																BH3	407867	9697570	Intersection of two lineament at the ridge. Mainly granitic sandy soil.		B	Req RS
																BH4	405309	9698656	At the depression. Coarse to Medium grained granite outcrops.		A	
																BH5	408041	9699256	Flat land. Small depression		C	down to the valley by making new road
																BH6	408010	9698440	Flat land. Small depression		C	down to the valley by making new road



LEGEND

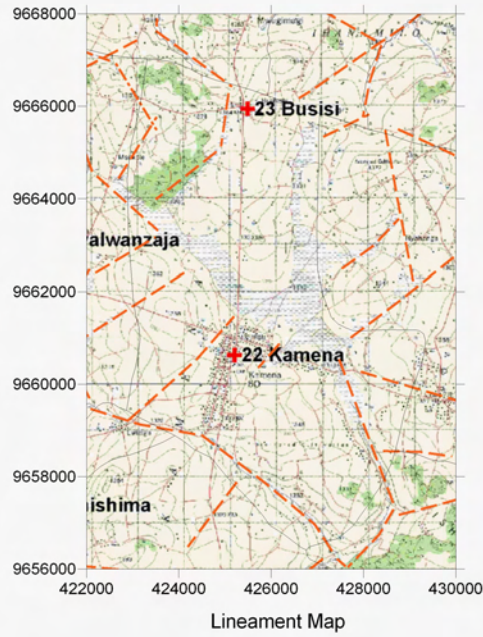
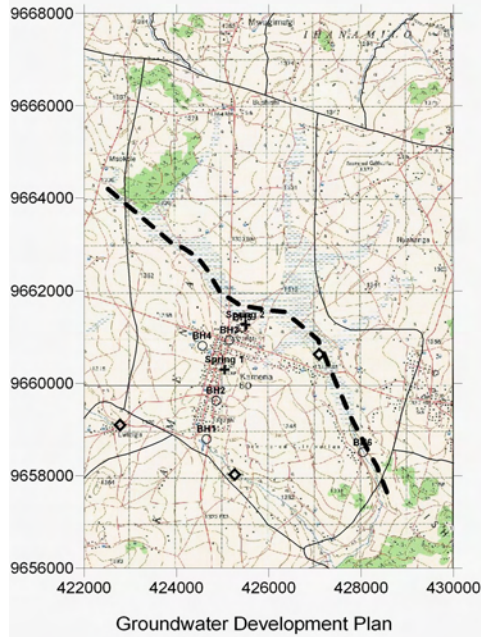
Groundwater Development Plan

- + Existing Water Source
- Alternative Bore Hole Site
- ◆ Recommended Site for the Drilling
- Village Boundary from Statics Office (2004)
- Estimated Village Boundary at Survey (March 2006)
- Clear Lineament from Aerial Photograph Interpretation
- Minor Lineament from Aerial Photograph Interpretation

Lineament Map

- - - Trace Lineament from Aerial Photograph Interpretation
- Past Drilling Records (source DDCA, SIDA)
D = Depth (GL-m), SWL = Static Water Level (GL-m), Yield = m³/h, WS = Water Struck Depth (GL-m)

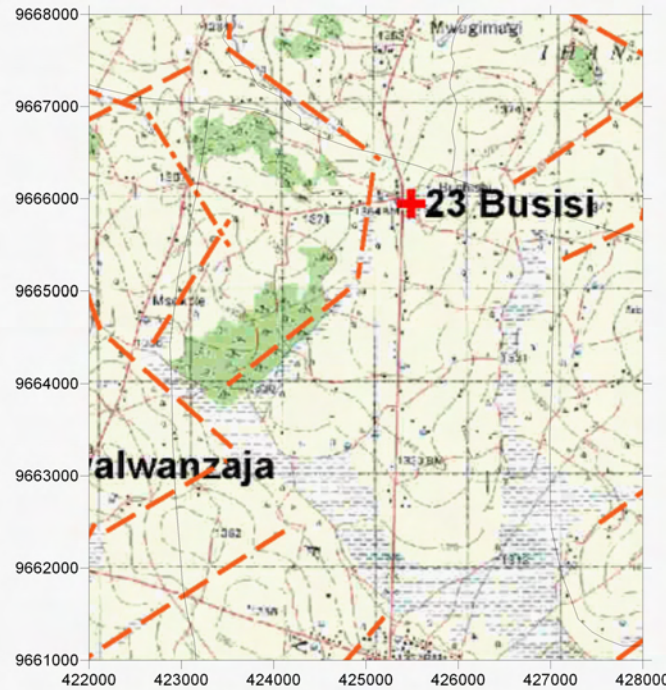
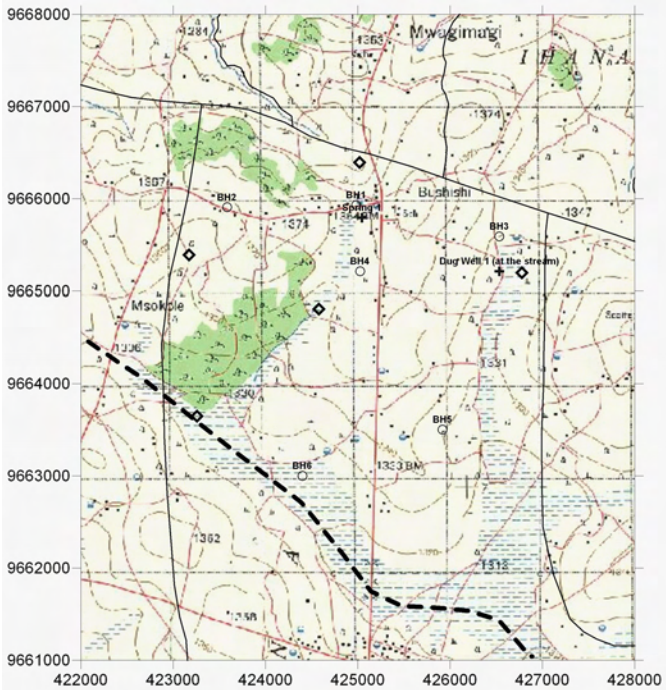
Survey Date	District	ID	Village	Population	Access	Topographic, Geological Overview	Existing Water Source						Alternative Bore Hole Location							
							Condition of Water Source	Type of Source	Coordination	Function	Seasonal	Remarks	BH Number	Coordination	Description of Selected point (Geology, Topography, Structure)	Score (probability of yielding well)	Remarks	Additional Comments, Attended Villager		
2006/3/16	Geita	22	Kamena	6,128	1h from Gaita town. The road is generally in good condition	Bounded by wide valley and lowland at the north portion. Composed of granite hilly terrain at the south.	10 Stream ponds (stream ponds). 3 are permanent although the few amount of water discharge.	Spring 1	425043	9660298	yes	yes	On the linear and narrow valley center. Dries up in the wet season.	BH1	424653	9658794	At the side of the main road on the lineament.	B		VC:Kambona Rugalla, Chairman of sub village: Elias Mahenge.
								Spring 2	425494	9661270	yes	no	In the whitish grey sand. Never dries up.	BH2	424858	9659624	On the center of col.	B		
														BH3	425148	9660936	At the center of the village. Some col and small lineament.	C	Req RS	
														BH4	424559	9660814	At the col of the ridge. Some dug wells but no outcrops can be found. Vegetation	A		
														BH5	425436	9661212	Hard laterite (ferocrete?). Upper side of the spring.	B		
														BH6	428037	9658504	Close to the small valley of granite (coarse - medium) Close to the permanent spring.	A		



LEGEND

- Existing Water Source
- Alternative Bore Hole Site
- Recommended Site for the Drilling
- Village Boundary from Statics Office (2004)
- Estimated Village Boundary at Survey (March 2006)
- Clear Lineament from Aerial Photograph Interpretation
- Minor Lineament from Aerial Photograph Interpretation
- Past Drilling Records (source DDCA, SIDA)
- D = Depth (GL-m), SWL = Static Water Level (GL-m), Yield = m³/h, WS = Water Struck Depth (GL-m)
- Trace Lineament from Aerial Photograph Interpretation

Survey Date	District	ID	Village	Population	Access	Topographic, Geological Overview	Condition of Water Source	Existing Water Source				Alternative Bore Hole Location					Additional Comments, Attended Villager			
								Type of Source	Coordination	Function	Seasonal	Remarks	BH Number	Coordination	Description of Selected point (Geology, Topography, Structure)	Score (probability of yielding well)		Remarks		
2006/3/16	Getta	23	Bushishi	3,498	1h from Gaita town. 10 min of bumpy road from the Junction n of Kamena.	Generally low profile of hills with wide valleys. Clear lineaments are at the north portion and low profile wide valleys at the south. Granite outcrops at the top of the hill and hill side.	8 Stream ponds (Spring). 4 remains some water in the dry season. 3 Charco Dam.	Spring 1	425044	9665794	yes	yes	Stream pond. Greyish sand at the seeping point.	BH1	424981	9665930	Small depression of wide valley. Sandy granitic soil and some fine granite outcrops.	B	Req RS	VC: Julias Muenda Mukono, VEO: Mulu Msafiri.
								Dug Well 1 (at the stream)	426535	9665212	yes	no	Grey sand soil with vegetation at surrounding area	BH2	423584	9665906	At the upper portion of the wide valley - trace lineament. Some granite outcrops but filled with grey sand.	C	Req RS	
														BH3	426535	9665590	At the minor depression with thick grey sand.	B	Req RS	
														BH4	425025	9665212	Grey sandy soil. Close to the dug well 1.	B	Req RS	
														BH5	425918	9663502	Wide depression, wet land. Loose sand at the top soil.	B		
														BH6	424400	9663000	No reachable road to the valley center. At the center of the valley.	A		



LEGEND

- Existing Water Source
- Alternative Bore Hole Site
- Recommended Site for the Drilling
- Village Boundary from Statics Office (2004)
- Estimated Village Boundary at Survey (March 2006)
- Clear Lineament from Aerial Photograph Interpretation
- Minor Lineament from Aerial Photograph Interpretation
- Past Drilling Records (source DDCA, SIDA)
 D = Depth (GL-m), SWL = Static Water Level (GL-m), Yield = m³/h, WS = Water Struck Depth (GL-m)
- Trace Lineament from Aerial Photograph Interpretation