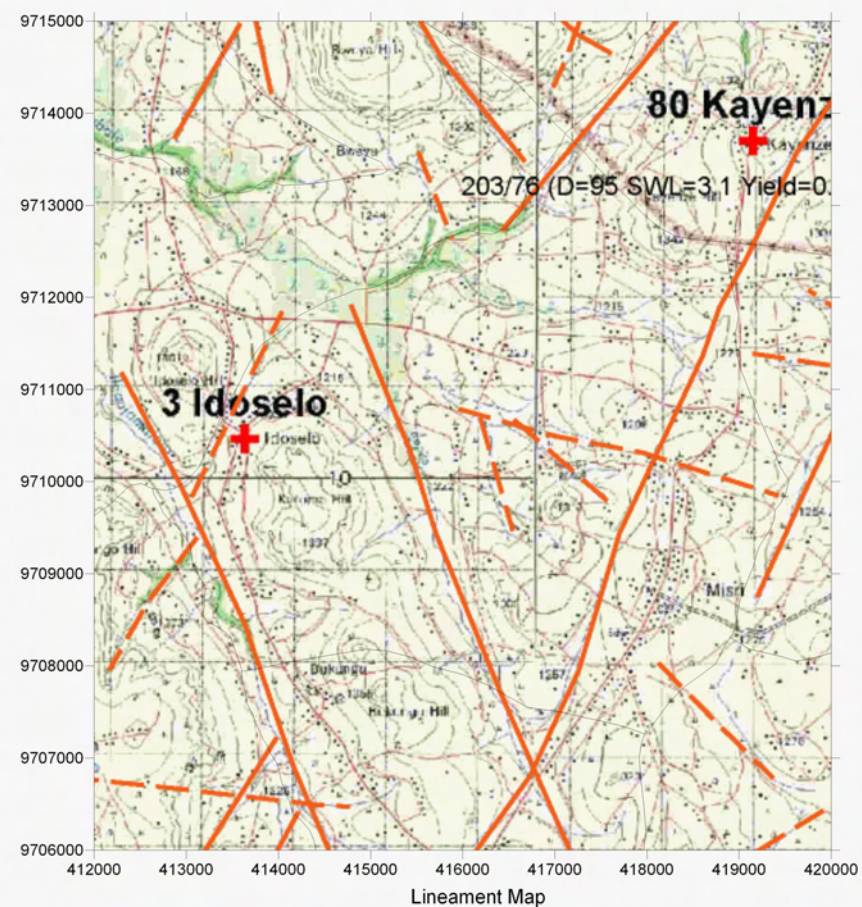
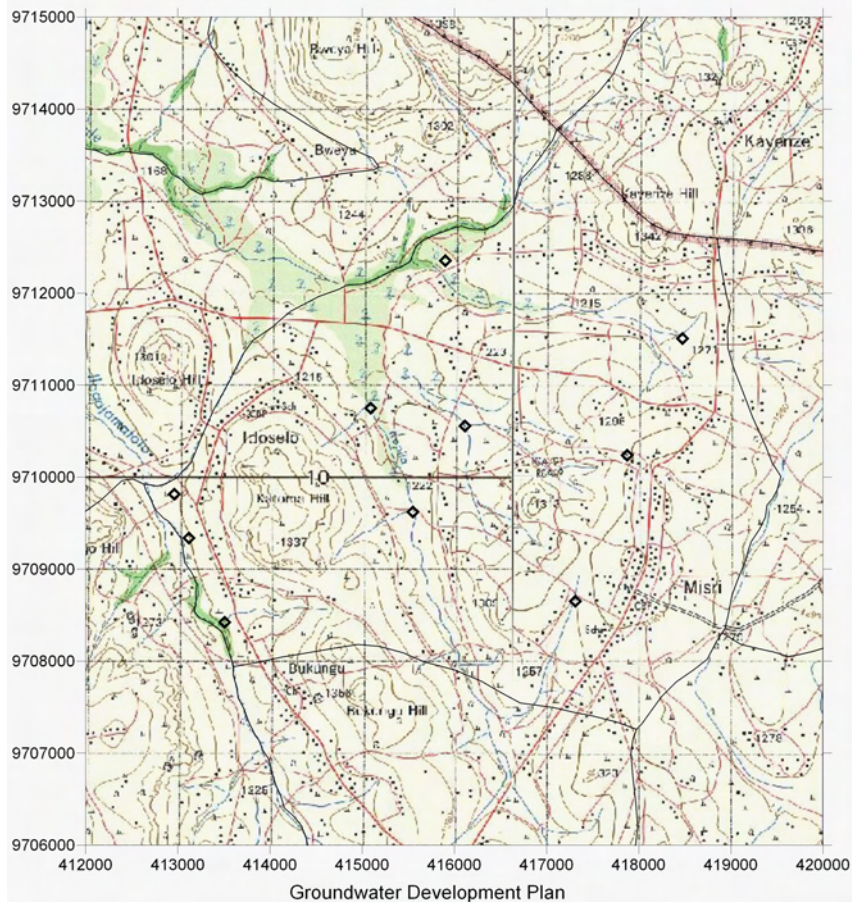


Survey Date	District	ID	Village	Population	Access	Topographic, Geological Overview	Condition of Water Source	Existing Water Source				Alternative Bore Hole Location							
								Type of Source	Coordination	Function	Seasonal	Remarks	BH Number	Coordination	Description of Selected point (Geology, Topography, Structure)	Score (probability of yielding well)	Remarks		
2006/3/6	Geita	3	Idosero	4,093	Due to the road failure, it was not possible to reach to the village.	Small ridge of granite Inseberg is located at the center of the village surrounded by the low flat land.	8 hand dug wells (5 is seasonal)												

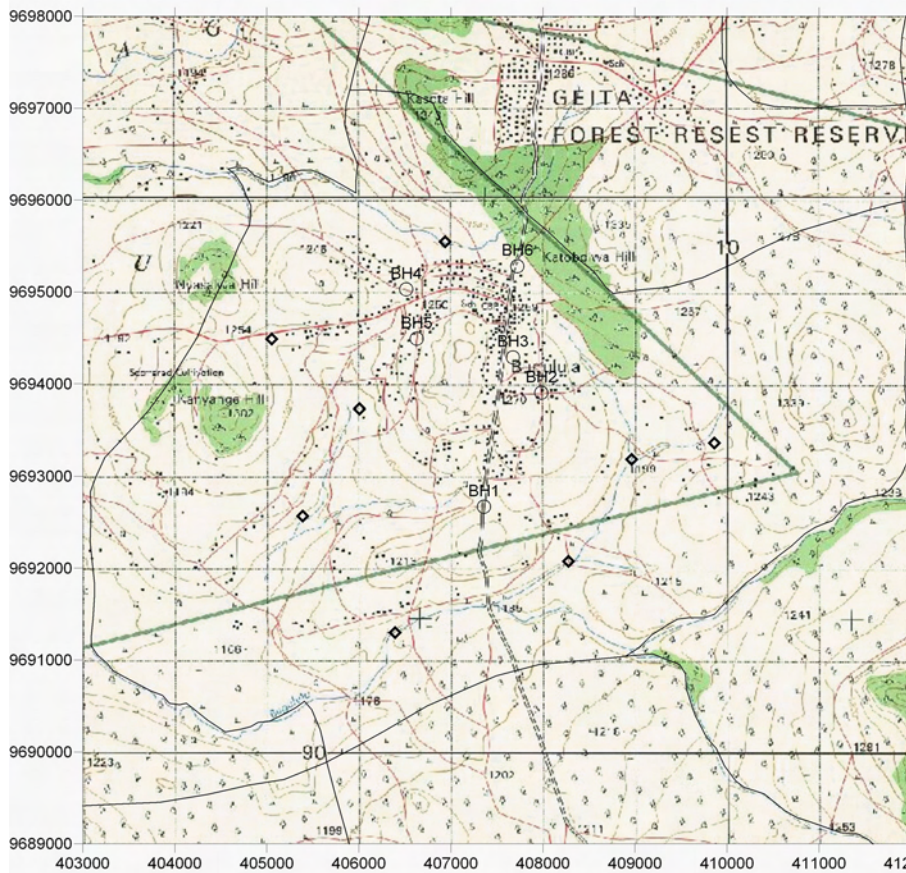


**LEGEND**

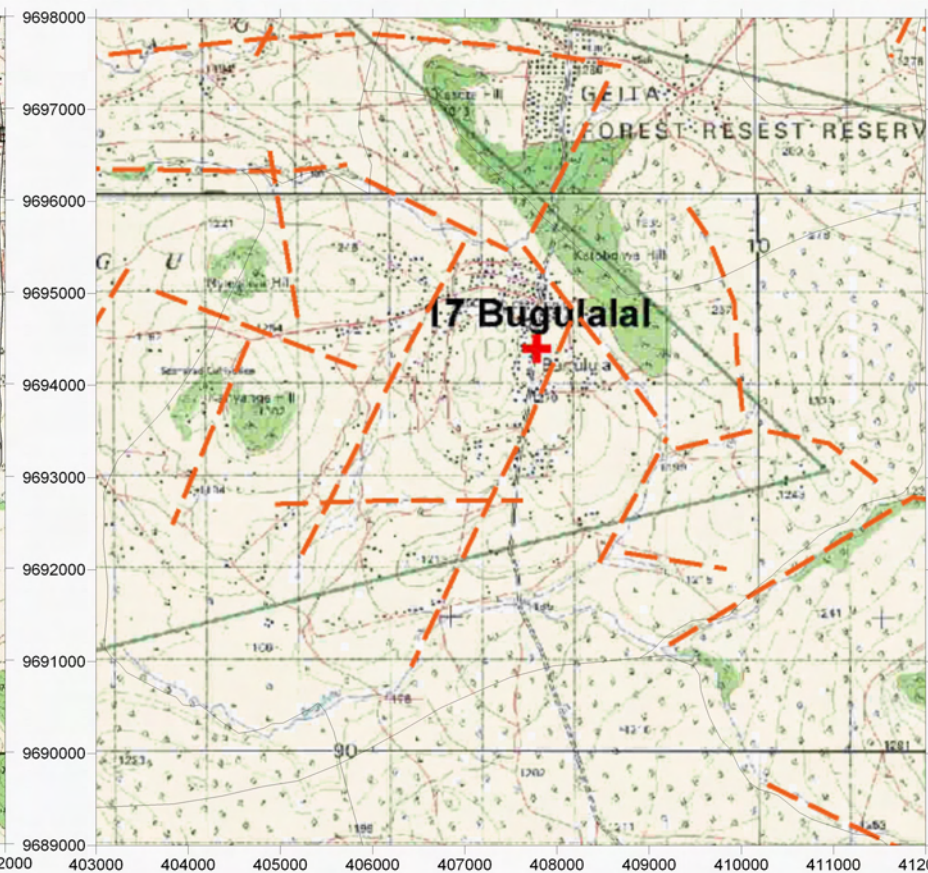
- Existing Water Source
- Alternative Bore Hole Site
- Recommended Site for the Drilling
- Village Boundary from Statics Office (2004)
- Estimated Village Boundary at Survey (March 2006)
- Clear Lineament from Aerial Photograph Interpretation
- Minor Lineament from Aerial Photograph Interpretation
- Trace Lineament from Aerial Photograph Interpretation
- Past Drilling Records (source DDCA, SIDA)  
D = Depth (GL-m), SWL = Static Water Level (GL-m), Yield = m<sup>3</sup>/h, WS = Water Struck Depth (GL-m)



Survey Date	District	ID	Village	Population	Access	Topographic, Geological Overview	Condition of Water Source	Existing Water Source					Alternative Bore Hole Location						
								Type of Source	Coordination	Function	Seasonal	Remarks	BH Number	Coordination	Description of Selected point (Geology, Topography, Structure)	Score (probability of yielding well)	Remarks	Additional Comments, Attended Villager	
2006/3/9	Geita	17	Bugulula	6,393	30 min with rough road. Road condition is generally good as some areas are rehabilitated by the Geita Goldmine	Ridge of granite Isenberg is located at the center of the hill. The lineaments tend to NE-SW, and the streams exist at the surroundings of the central hill.	22 springs (7 springs have water throughout a year)						BH1	407358	9692668	Lateritic semi consolidated materials at the top with minor depression	B		Additional Remarks: The roads in the village path almost at the side of the hill. Therefore, it is requested to construct new roads down to the valley to get resonable drilling site. Vice VEO:Juma Lutubija, Ward Security Officer: Alfred Damasi
													BH2	407982	9693902	Close to the hill top. Medium grained granite outcrops. Small depression	C	Req RS	
													BH3	407674	9694288	At small depression with granite boulders and sandy soil.	B	Req RS	
													BH4	406514	9695028	At the col of the ridge along the road.	B	Req RS	
													BH5	406628	9694490	At the side of the hill.	C	Req RS	
													BH6	407723	9695280	Almost flat land with small depression.	C	Req RS	



Groundwater Development Plan



Lineament Map

LEGEND

- Existing Water Source
  - Alternative Bore Hole Site
  - Recommended Site for the Drilling
  - Village Boundary from Statics Office (2004)
  - Estimated Village Boundary at Survey (March 2006)
  - Clear Lineament from Aerial Photograph Interpretation
  - Minor Lineament from Aerial Photograph Interpretation
  - Trace Lineament from Aerial Photograph Interpretation
  - Past Drilling Records (source DDCA, SIDA)
- D = Depth (GL-m), SWL = Static Water Level (GL-m), Yield = m<sup>3</sup>/h, WS = Water Struck Depth (GL-m)