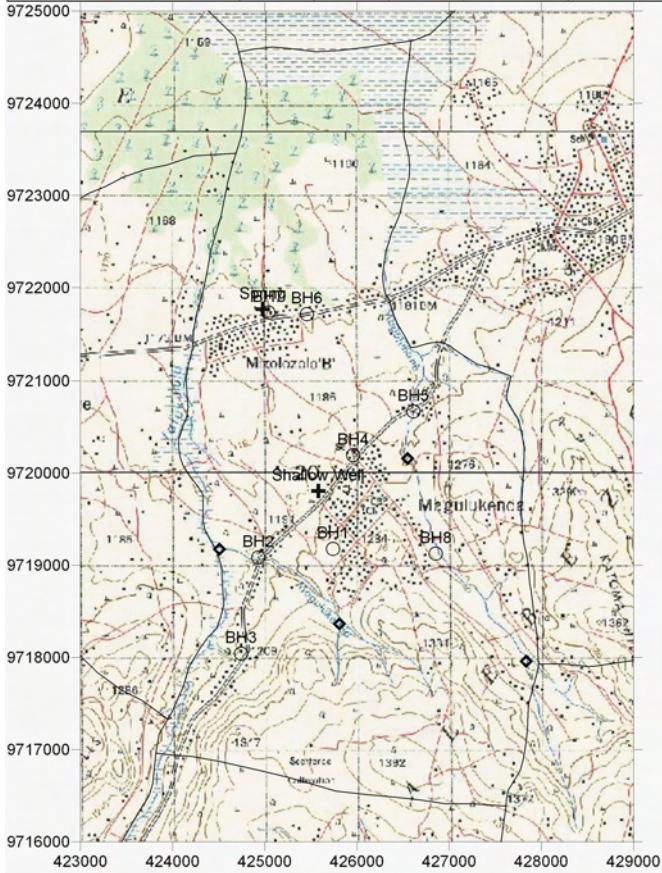
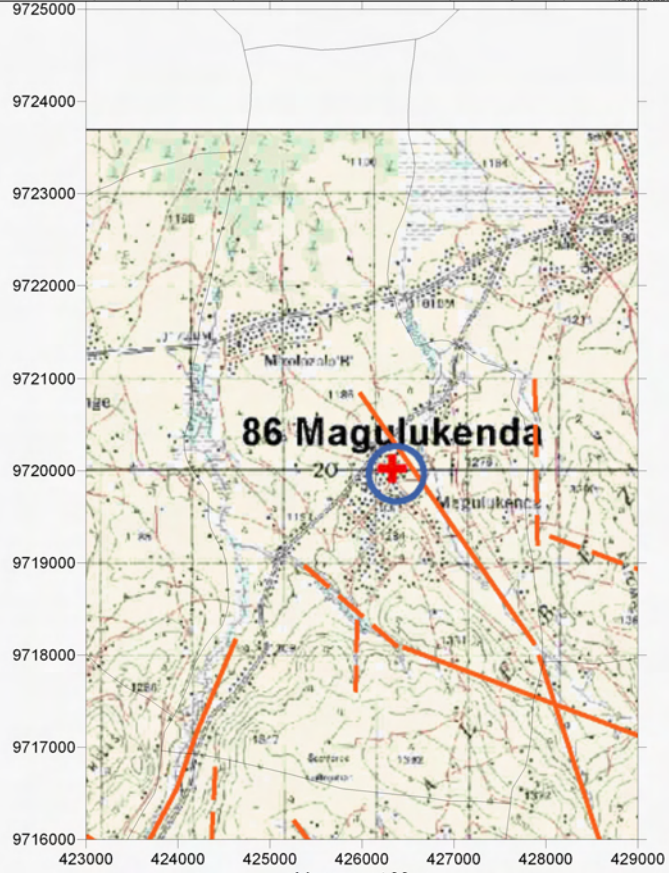


Survey Date	District	ID	Village	Population	Access	Topographic, Geological Overview	Condition of Water Source	Existing Water Source				Alternative Bore Hole Location					Attended Villager			
								Type of Source	Coordination	Function	Seasonal	Remarks	BH Number	Coordination	Description of Selected point (Geology, Topography, Structure)	300W (probability of violation)		Remarks		
2006/37	Sengerema	85	Magulukenda	3,560	10 min from the Main rough road at junction of Kalebezo.	Relatively steep ridges at the south eastern portion with the clear lineament of NW-SE. Northern portion is occupied by flatland with some swamps.	1SW, 10 Springs (6 is seasonal), Charco dam	Shallow Well	425580	9719804	no	no	HESAWA (2005?) due to the shallow nature of the well, not functioning even in the wet season. Providing clear water throughout a year. About 1500 villagers depend on this water source in the dry	BH1	425741	9719178	At the village center. Coarse to medium granite outcrops.	C	Req RS	VEO: Kairoly G. Theodory
								Spring	424979	9721766	yes	yes		BH2	424930	9719084	On the major lineament with small depression. Grey sand at the top soil	B		
														BH3	424744	9718042	At the small depression at the side of the ridge.	C	Req RS	
														BH4	425960	9720192	On the major lineament with small depression. Medium granite	B		
														BH5	426614	9720668	At the small valley with dark grey top soil	C	Req RS	
														BH6	425458	9721714	At the small valley with dark grey top soil.	C	Req RS	
														BH7	425037	9721732	3 meters of semi consolidated laterite and the granite outcrop. On the lineament at small depression	B	Req RS	
														BH8	426856	9719126		B		



LEGEND

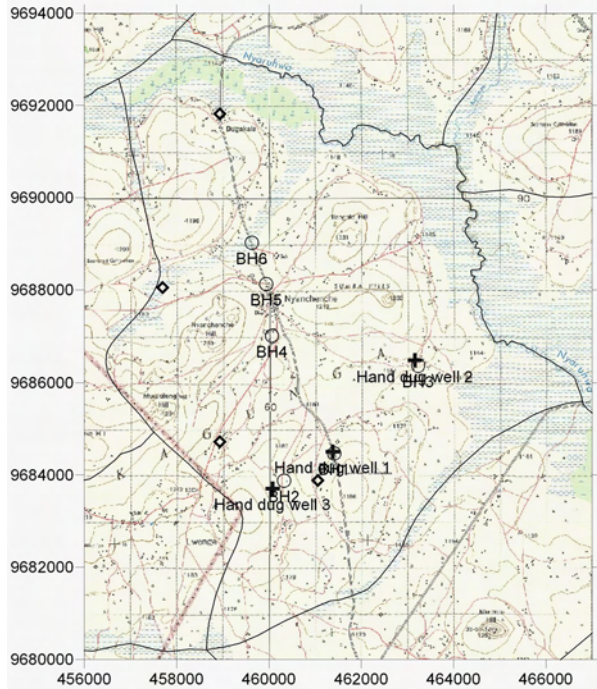
- Existing Water Source
  - Alternative Bore Hole Site
  - Recommended Site for the Drilling
  - Village Boundary from Statics Office (2004)
  - Estimated Village Boundary at Survey (March 2006)
  - Clear Lineament from Aerial Photograph Interpretation
  - Minor Lineament from Aerial Photograph Interpretation
  - Past Drilling Records (source DDCA, SIDA)
- D = Depth (GL-m), SWL = Static Water Level (GL-m), Yield = m<sup>3</sup>/h, WS = Water Struck Depth (GL-m)



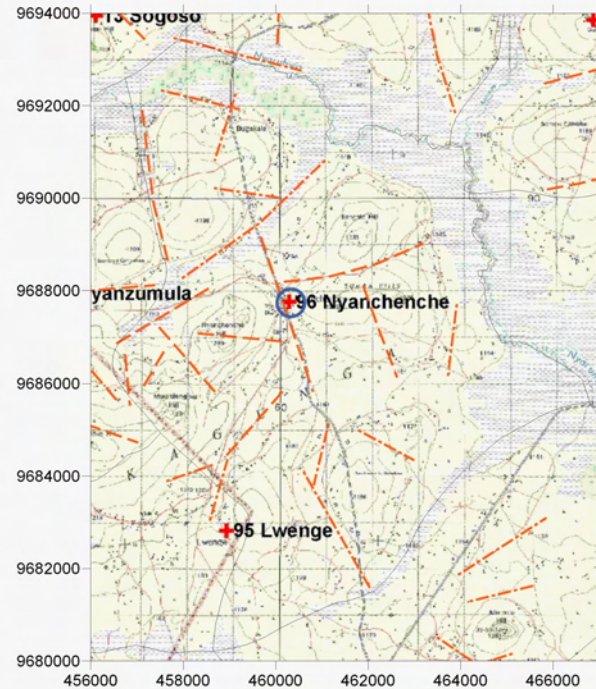
Lineament Map

- Trace Lineament from Aerial Photograph Interpretation

Survey Date	District	ID	Village	Population	Access	Topographic, Geological Overview	Condition of Water Source	Existing Water Source				Alternative Bore Hole Location				Remarks	Attended Villager			
								Type of Source	Coordination	Function	Seasonal	BH Number	Coordination	Description of Selected point (Geology, Topography, Structure)	Score (probability of yielding -m <sup>3</sup> /h)					
2006/3/3	Sengerema	96	Nyanchече	5,367	About 30 min from Sengerema. Passable with some bumpy areas.	Nyaruha River at NE with low ridges of Granite Monadnock. Lineaments trends to NE-SW and NW-SE direction.	5 hand dug wells without protection (seasonal), 5 Springs (2 are seasonal), 1 Charcol Dam (for the cattle)	Hand dug well 1	461380	9684504	yes	no	Gneiss with Quartz rich vein	BH1	461413	9684466	On the wide valley with lineament Crossings of two clear lineament. At the valley	A	VC: Nayala Masanja, VC-Sub Village: Abdala Budaga	
								Hand dug well 2	463163	9686476	yes	no		BH2	460324	9683874		A		
								Hand dug well 3	460078	9683702	yes	no		BH3	463234	9686368	Col form ridge. Out crops of Granitic Gneiss	B		
														BH4	460067	9687000	High end of a valley. Fine sand at the surface with vegetation.	C		Req RS
														BH5	459942	9688124	Flat land between the hill. Crossing of two major lineament.	B		Req RS
														BH6	459626	9689020	Side of the wide valley. Consist of grey-brownish sandy soil	B		better site at the valley center -req road const.



Water Source Development Plan

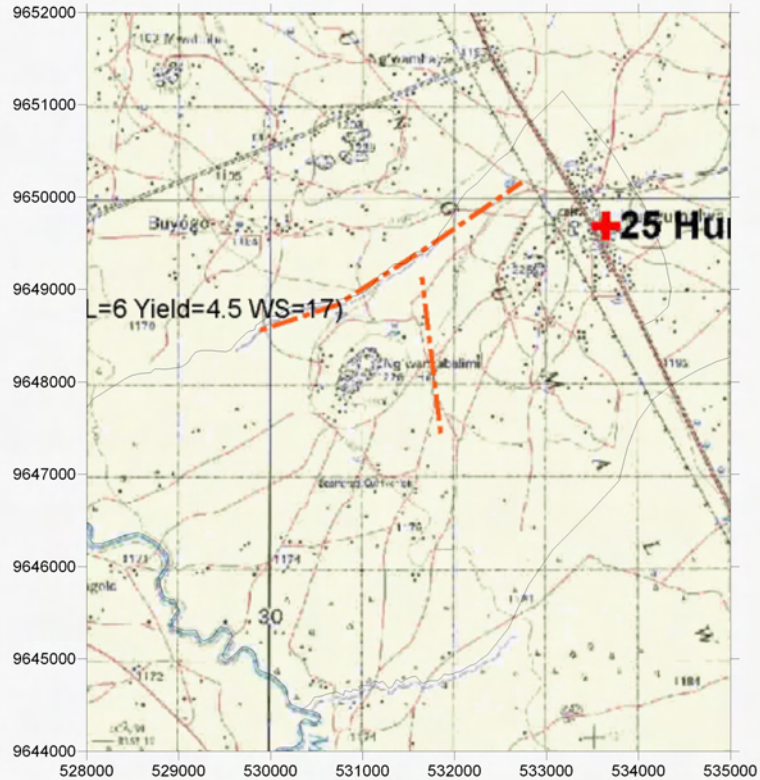
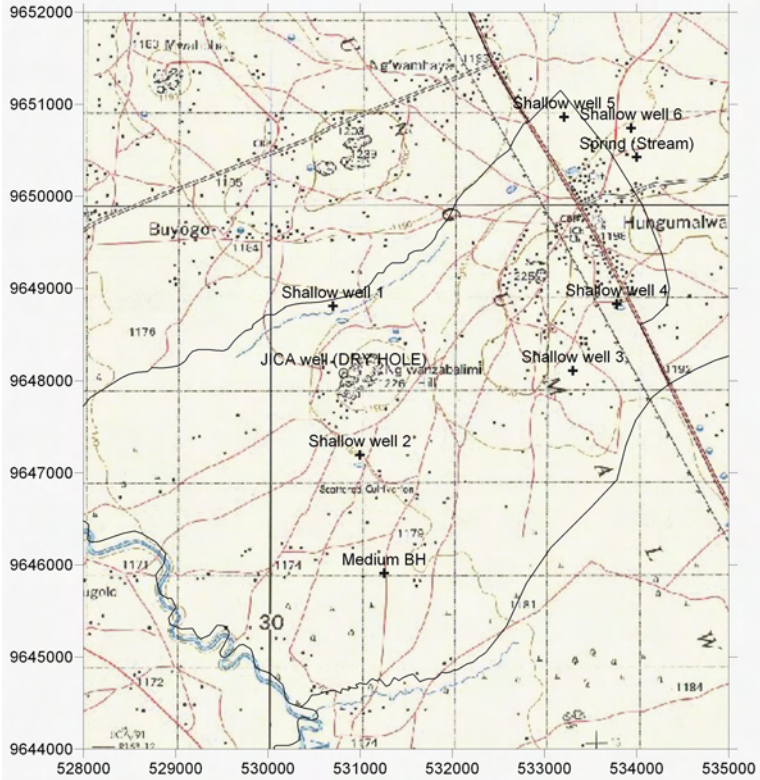


Lineament Map

LEGEND

- Existing Water Source
- Alternative Bore Hole Site
- Recommended Site for the Drilling
- Past Drilling Records (source DDCA, SIDA)  
D = Depth (GL-m), SWL = Static Water Level (GL-m), Yield = m<sup>3</sup>/h, WS = Water Struck Depth (GL-m)
- Village Boundary from Statics Office (2004)
- Estimated Village Boundary at Survey (March 2006)
- Clear Lineament from Aerial Photograph Interpretation
- Minor Lineament from Aerial Photograph Interpretation
- Trace Lineament from Aerial Photograph Interpretation

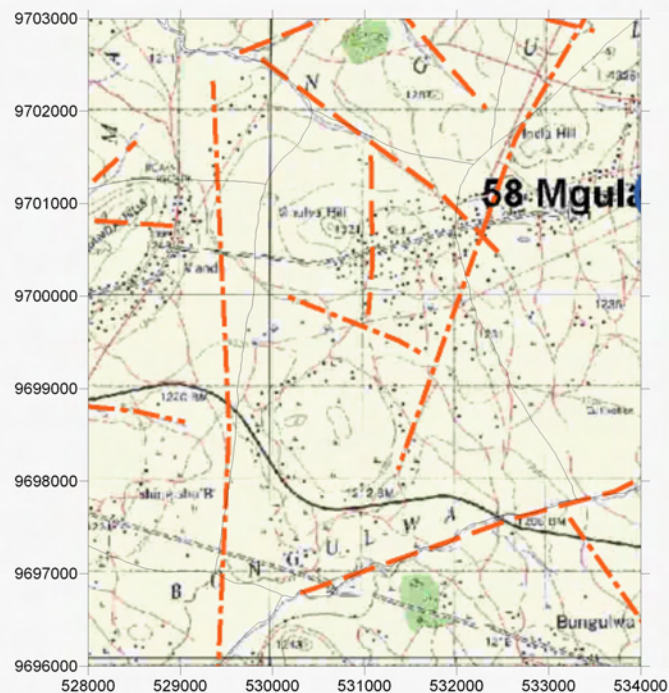
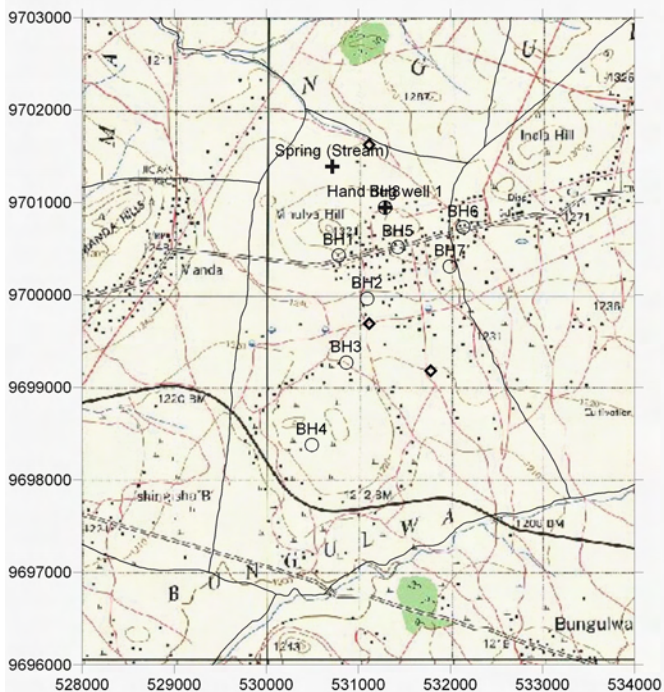
Survey Date	District	ID	Village	Population	Access	Topographic, Geological Overview	Condition of Water Source	Existing Water Source				Alternative Bore Hole Location					Attended Villager								
								Type of Source	Coordination	Function	Seasonal	Remarks	BH Number	Coordination	Description of Selected point (Geology, Topography, Structure)	Score (probability of yielding well)		Remarks							
2006/2/22	Kwimba	22	Hungumalwa	5,384	On the main road to Shinyanga with paved road.	Mainly consist of gentle slope and flatland. Some granite in-seberg (medium-coarse grained). Bounded by Mwame river at south western portion.	7 shallow wells and 4 dams. Of which 1 shallow well and dams have no water in the dry season.	Shallow well 1	530707	9648808	yes	no	HESAWA well. Depth of less than 10m. Low water table in dry season.	BH1	530821	9648084	At the col structure beside the coarse granite in-seberg. Extension of water hole.	X	Although a promising result obtained from the resistivity sounding, it was dry hole.						
								Shallow well 2	530998	9647196	yes	no	HESAWA well. Depth of less than 11m. Low water table in dry season.												
								Shallow well 3	533307	9648110			HESAWA well. Provides more than 500 buckets per day. 8 m deep.												
								Shallow well 4	533785	9648830	yes	yes	No water in dry season.												
								Shallow well 5	533212	9650863	yes	yes	HESAWA well made in 1995. Produces more than 2000 buckets per day.												
								Shallow well 6	533839	9650742	yes	no	Made in 93 by HESAWA. Depth to 30 m.												
								Spring (Stream)	534000	9650428	yes	no	Permanet stream pond. Consist of granitic sandy soil.												
								Medium BH	531260	9645910	yes	no	Made in 93 by HESAWA. Depth to 30 m.												



**LEGEND**

+	— — — —	— — — —
○	— — — —	●
◇	— — — —	D = Depth (GL-m), SWL = Static Water Level (GL-m), Yield = m <sup>3</sup> /h, WS = Water Struck Depth (GL-m)
	— — — —	

Survey Date	District	ID	Village	Population	Access	Topographic, Geological Overview	Condition of Water Source	Existing Water Source					Alternative Bore Hole Location					Attended Villager
								Type of Source	Coordination	Function	Seasonal	Remarks	BH Number	Coordination	Description of Selected point (Geology, Topography, Structure)	Score (probability of yielding well)	Remarks	
2006/3/1	Kwimba	71	Mhulya	2,321	30 min from the junction at Mwanza-Musoma road.	Surrounded by the low ridges or hills consist by the granite. Few lineament observed in the village	3 hand dug wells and 2 charcoal dam.	Hand dug well 1	531291 9700946	yes	no	Whitish grey color, dark grey top soil.	BH1	530786 9700428	Side of the hill. Coarse granite with small depression	B		Village assistant Secretary: Amosi Mathew, Diwansi Jackson Bushi, Member of Water Committee: Safari Ntalamu
								Spring (Stream)	530715 9701388	yes	no	Elevation 1249m at valley center.	BH2	531093 9699958	Almost flat area. Brownish sandy soil	C	Req. RS	
													BH3	530869 9699268	Weathered granite and brownish sand as top soil. Middle of the wide	B	Req. RS	
													BH4	530493 9698378	Side of the hill. Some outcrops of coarse- medium granite.	C	Req. RS. Road is only passable in dry season	
													BH5	531429 9700518	At the series of small granite	B	Req. RS	
													BH6	532137 9700732	At the center of wide valley.	A	Req. RS	
													BH7	531993 9700308	Spotted outcrops of coarse to medium grained granite with coarse sands of weathered granite.	B	May be move down to the valley center if road constructed	
													BH8	531290 9700946	Side of the Monadnock with small depression. Coarse- medium grained granite (Quartz rich)	B	May be move down to the valley center if road constructed	



LEGEND

- Village Boundary from Statics Office (2004)
- Estimated Village Boundary at Survey (March 2006)
- Existing Water Source
- Alternative Bore Hole Site
- Recommended Site for the Drilling
- Past Drilling Records (source DDCA, SIDA)  
D = Depth (GL-m), SWL = Static Water Level (GL-m), Yield = m3/h, WS = Water Struck Depth (GL-m)
- Clear Lineament from Aerial Photograph Interpretation
- Minor Lineament from Aerial Photograph Interpretation
- Trace Lineament from Aerial Photograph Interpretation