

**Department of Rural Water Supply (DRWS)  
Ministry of Water (MoW)  
The United Republic of Tanzania**

**The Study on Rural Water Supply in Mwanza and Mara Regions  
in the United Republic of Tanzania**

**Final Report  
DATA BOOK**

**September 2006**

**JAPAN INTERNATIONAL COOPERATION AGENCY**

---

**KOKUSAI KOGYO CO., LTD.**

## CONTENTS

- 1 Well Inventory Survey**
  - ① Survey Sheet
  - ② Survey List
- 2 Hydrogeological Survey**
  - ① Survey List of Candidate Priority Villages
- 3 Water Quality**
  - ① Analysis List
  - ② Supplementary Survey
- 4 Test Well Drilling and Pumping Test**
  - ① Location Map and Columnar Section
  - ② Pumping Test
  - ③ Supplementary Survey
- 5 Geophysical Prospecting**
  - ① Location Map and Resistivity Curve
  - ② Resistivity Profile
  - ③ Results of Electric Sounding
  - ④ Supplementary Survey
- 6 Survey Works**
  - ① Survey Drawings
- 7 Existing Piped Schemes**
  - ① Institutional Demand of the Piped Scheme
  - ② Village List of the Piped Scheme
  - ③ Water Service Area
- 8 Piped Schemes of Priority Project**
  - ① Layout of Piped Scheme
  - ② Hydrological Calculation of Transmission and Distribution Line
- 9 Socio-economic Survey**
  - ① Survey Sheet
  - ② 205 Villages Profile
  - ③ 100 Villages Profile
  - ④ Supplementary Survey

**10 Operation and Maintenance**

- ① RRA Survey
- ② Survey Sheet
- ③ Supplementary Survey

**11 Minutes of Discussion**

# **1 Well Inventory Survey**

**① Survey Sheet**

**WELL INVENTORY SURVEY SHEET WITH VILLAGE INFORMATION DATE: / /2005**

GENERAL VILLAGE INFO	<b>A. Village Location and Profile</b>											
	District		Ward		Village		Population	(at year of				
	Sub-Village	NO	Name									
	Access	E M D H	Population									
	Location (GPS) at village office	Easting			Northing							
	<b>B. Main Water Source of the Village (Specify the number and Tick the main source)</b>											
	Dug Well	<input type="checkbox"/>	Shallow Well	<input type="checkbox"/>	/	Borehole	<input type="checkbox"/>	/	with Hand pump	<input type="checkbox"/>	with Motor pump	<input type="checkbox"/>
	Spring	<input type="checkbox"/>	Lake water	<input type="checkbox"/>	(pump <input type="checkbox"/> distance m)	Others	<input type="checkbox"/>	(Specify )				
	<b>C. Water Use (Tick as many)</b>											
	Drinking	<input type="checkbox"/>	Cooking	<input type="checkbox"/>	Washing	<input type="checkbox"/>	Bathing	<input type="checkbox"/>	Agriculture	<input type="checkbox"/>		
Live Stock	<input type="checkbox"/>	Others	<input type="checkbox"/>	(Specify )								
<b>D. Organization of Water Use in the Village</b>												
Presence of Village Water Committee	Yes <input type="checkbox"/>	No <input type="checkbox"/>	Availability of Village Water Fund	Yes <input type="checkbox"/>	TSHS	No <input type="checkbox"/>						
Total Number of Water Users Group in the village				Total Number of Functioning WUG	reason of not functioning( )							
WELL INVENTORY	<b>E. Well Specification</b>											
	1. Location of Well(GPS)	Easting			Northing							
	2. Elevation	GPS			Topographical Map							
	3. Distance (from village centre)											
	4. Well Number	Well Facility handpump <input type="checkbox"/> motorpump <input type="checkbox"/> no facility <input type="checkbox"/>										
	5. Surface Protection											
	6. Construction Year											
	7. Well Depth	(GL-m)										
	8. Drilling Diameter	(cm)										
	9. Casing Diameter	(cm)										
	10. Screen Depth	From GL- m To GL- m (Specify others if exist)										
	11. Water Struck Depth	(GL-m)										
	12. Geology at screen depth											
	13. Geology at surface											
	<b>F. Measurements</b>											
	14. Static Water Level											
	15. Dynamic Water Level											
16. Yield	Liter/ hour (if not known, estimate from the buckets per day, duration of fill the tank etc)											
17. Motor pump borehole	Time and date of measurement											
	Duration since the pump stopped											
	Type				Capacity							
<b>G. Water Quality</b>												
pH:		T:	°C	ECt:	mS/m	EC25:	mS/m	ORP:	mv			
O&M CONDITION FOR A SOURCE	<b>H. Questionnaires for O&amp;M of Water Source</b>											
	1. The well (or other main water source) provides good quality water	Yes <input type="checkbox"/>	No <input type="checkbox"/>									
	The well (or other main water source) provide the water every day	Yes <input type="checkbox"/>	No <input type="checkbox"/>	specify duration (time, season)								
	2. The responsible body or person for the repair (maintenance)											
	Village Government	<input type="checkbox"/>	Village Water Committee	<input type="checkbox"/>	Water Users Association	<input type="checkbox"/>	Nobody	<input type="checkbox"/>				
	Water Users Group	<input type="checkbox"/>	District Council Office (Water Engineer's Office	<input type="checkbox"/>	Others	<input type="checkbox"/>	(Specify					
	3. Who look after the well every day?											
	Village Government	<input type="checkbox"/>	Village Water Committee	<input type="checkbox"/>	Water Users Association	<input type="checkbox"/>	Nobody	<input type="checkbox"/>				
	Water Users Group	<input type="checkbox"/>	District Council Office (Water Engineer's Office	<input type="checkbox"/>	Others	<input type="checkbox"/>	(Specify					
	4. The money Collected for the services of water (O&M) of the well (or other water source (specify):	Yes <input type="checkbox"/>	No <input type="checkbox"/>									
	If Yes, how the fund raised and collected											
	Pay per bucket/container to the attendant	<input type="checkbox"/>	TSHS/Litt	Monthly contribution by households	<input type="checkbox"/>							
	Traditional revolving funds/Ifogongho	<input type="checkbox"/>	Fines/penalty	<input type="checkbox"/>								
Users contribute cash when the facility broken	<input type="checkbox"/>	Others (specify: )	<input type="checkbox"/>									
5. Latest remaining balance :	TSHS											
6. The Money Saved at :	In the bank account <input type="checkbox"/>	Kept by the villagers at homes	<input type="checkbox"/>	ho: )								
Others	<input type="checkbox"/>	(Specify :										

Person in Charge :

Checked by :

**WELL INVENTORY SURVEY SHEET (ATTACHMENT)**

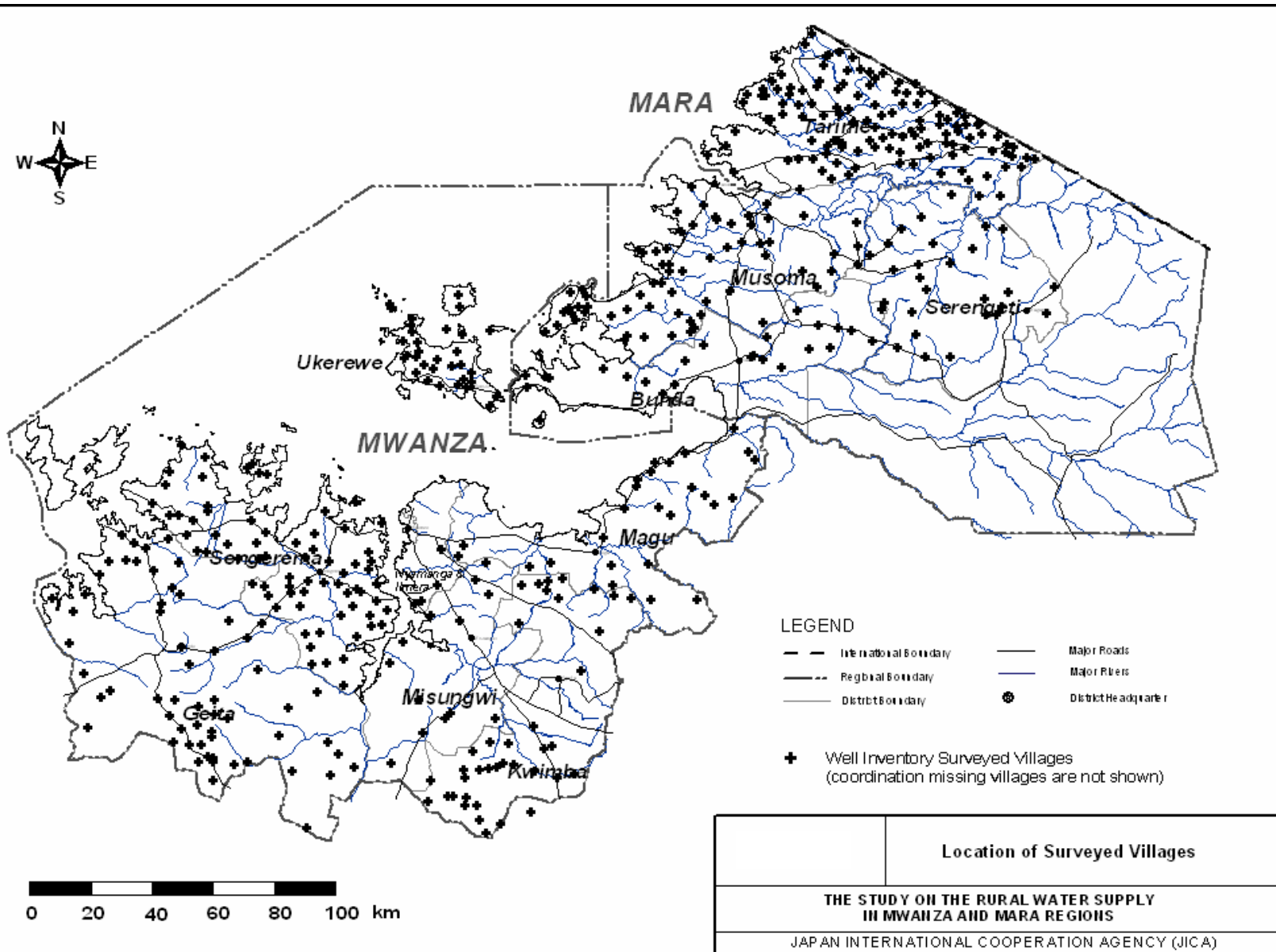
*attach village location outline and water source location, photo of well, drawings of well structure, remarks*

A large grid of graph paper, consisting of 20 columns and 30 rows of small squares, intended for recording survey data. The grid is empty and occupies the majority of the page below the header.

## ② Survey List



I-I





LOCATION				POPULATION			EXISTING LIST		VILLAGE SURVEY																								
DISTRICT	Ward	No. by District	Village	A: Population in List (2004)	B: Population in Census (2002)	C: Population (from survey)	Population year	Existing Water Source						Surveyed Water Source						Water Use					Water Quality		Remarks						
								Functional			Non Functional			Well			Others			Drinking			Cooking			Washing			Others		good	bad	
								SW	BH	Others	SW	BH	Others	Dug	Shallow	borehole	Spring	Dam	Lake water	Pump operation	Others	Drinking	Cooking	Washing	Bathing	Agriculture		Live stock	Others				
SENGEREMA	Igaluia	67	Sotta	2,968	2,765	3,581		0	1	-	0	0	3	0	yes	0	0	0	0	yes	-	yes	yes	no	no	no	no	no	-				
SENGEREMA	Buyagu	69	Isole	2,809	3,153	3,740	2005	0	1	-	1	0	0	1	1	0	0	0	0	yes	-	yes	no	no	yes	no	no	no	-				
SENGEREMA	Buyagu	71	Bitoto	3,504	2,613	3,600	2005	0	0	-	0	0	16	0	0	0	0	0	0	0	-	yes	yes	yes	yes	no	no	no	-				
SENGEREMA	Buyagu	72	Kalagalanga	1,193	1,196	3,009	2005	0	0	-	0	0	2	0	0	0	0	0	0	0	-	yes	yes	yes	yes	no	no	no	-				
SENGEREMA	Buyagu	73	Mulaga	2,016	1,784	9,600	2005	0	0	-	0	0	6	0	0	0	0	0	0	0	-	yes	yes	yes	yes	no	yes	no	-				
SENGEREMA	Nyanzenda	75	Buswelu	2,017	2,374	2,045	2004	0	0	-	1	0	6	1	0	0	0	0	0	0	-	yes	yes	yes	yes	no	no	no	-				
SENGEREMA	Nyanzenda	76	Migukulama	2,219	1,920	2,080	2005	0	0	-	0	0	9	0	0	0	0	0	0	0	-	yes	yes	yes	yes	no	no	no	-				
SENGEREMA	Nyanzenda	77	Nyanzenda	3,367	3,561	4,070	2005	0	0	-	0	0	18	0	0	0	0	0	0	0	-	yes	yes	yes	yes	no	no	no	-				
SENGEREMA	Nyehunge	78	Isaka	5,235	5,565	5,235	7	0	-	0	0	0	0	0	0	0	0	0	0	0	-	no	no	no	no	no	no	no	-				
SENGEREMA	Nyehunge	79	Ruharanyonda	12,492	11,225	12,492		5	0	-	0	0	0	0	0	0	0	0	0	0	-	no	no	no	no	no	no	no	-				
SENGEREMA	Nyehunge	80	Kayenze	4,311	3,243	850	2005	2	0	-	1	0	10	3	0	0	0	0	0	yes	-	yes	yes	yes	no	no	no	-					
SENGEREMA	Nyehunge	81	Nyamadoke	3,239	3,624	5,612	2005	3	0	-	0	0	4	3	0	0	0	0	0	yes	-	yes	yes	yes	no	no	no	-	yes				
SENGEREMA	Kalebezo	83	Busekeseke	2,576	2,148	2,925	2004	0	0	-	0	0	5	0	0	0	0	0	0	0	-	yes	yes	yes	yes	no	no	no	-				
SENGEREMA	Kalebezo	84	Katoma	2,569	2,541	2,312	2002	0	0	-	1	0	14	1	0	0	0	0	0	0	-	yes	yes	yes	yes	no	no	no	-				
SENGEREMA	Kalebezo	86	Magulukenda	3,542	3,198	4,944		0	0	-	0	0	7	0	0	0	0	0	0	0	-	yes	yes	yes	yes	no	no	no	-				
SENGEREMA	Buzilasoga	87	Buzilasoga	2,340	2,241	2,513	2004	2	0	-	1	0	5	0	0	0	0	0	0	0	-	yes	yes	yes	yes	no	no	no	-	yes			
SENGEREMA	Buzilasoga	88	Ikoni	1,445	1,559	1,120	2005	1	0	-	0	0	15	1	0	0	0	0	0	0	-	yes	yes	yes	yes	no	no	no	-	yes			
SENGEREMA	Buzilasoga	89	Igaka	3,126	2,400	3,360	2004	0	0	-	0	0	7	0	0	0	0	0	0	0	-	yes	yes	yes	yes	no	no	no	-	yes			
SENGEREMA	Buzilasoga	90	Karyelele	1,724	1,932	2,262	2005	0	0	-	0	0	16	0	0	0	0	0	0	0	-	yes	yes	yes	yes	no	no	no	-	yes			
SENGEREMA	Nyakaliro	93	Bukokwa	5,348	6,861	6,893	2002	0	0	-	0	0	3	0	0	0	0	0	0	0	-	yes	yes	yes	yes	no	no	no	-				
SENGEREMA	Kagunga	94	Kagunga	3,535	3,960	4,038	2004	0	0	-	0	0	11	0	0	0	0	0	0	0	-	yes	yes	yes	yes	no	no	no	-				
SENGEREMA	Kagunga	95	Lwenge	2,152	1,985	2,150	2005	0	0	-	0	0	4	0	0	0	0	0	0	0	-	yes	yes	yes	yes	no	no	no	-				
SENGEREMA	Kagunga	96	Nyanchenche	4,298	4,821	6,130	2005	0	0	-	2	0	6	2	0	0	0	0	0	yes	-	yes	yes	yes	yes	no	no	no	-	yes			
SENGEREMA	Kagunga	97	Nyanzumula	3,494	3,204	3,689	2005	0	0	-	1	0	10	1	0	0	0	0	0	yes	-	yes	yes	yes	no	no	no	-					
SENGEREMA	Nyakasasa	99	Nyamisiwi	3,925	2,050	2,051	2004	0	0	-	0	0	1	0	0	0	0	0	0	0	-	yes	yes	yes	yes	no	no	no	-				
SENGEREMA	Nyakasasa	100	Nyakasasa	8,097	3,585	2,051	2004	0	0	-	0	0	1	0	0	0	0	0	0	0	-	yes	yes	yes	yes	no	no	no	-				
SENGEREMA	Lugata	102	Bugoro	2,666	3,587	3,410	2005	0	0	-	0	0	1	0	0	0	0	0	0	0	-	yes	yes	yes	yes	no	no	no	-				
SENGEREMA	Lugata	103	Nyakabanga	2,568	2,352	3,226	2005	0	0	-	0	0	yes	0	0	0	0	0	yes	0	-	yes	yes	yes	yes	no	no	no	-				
SENGEREMA	Lugata	104	Lugata	9,303	10,963	4,678	2005	1	0	-	0	0	1	2	0	0	0	0	0	0	-	yes	yes	yes	yes	no	no	no	-				
SENGEREMA	Kazunzu	106	Lushamba	9,021	9,496	5,000	2005	0	0	-	0	0	4	0	0	0	0	0	yes	0	-	yes	yes	yes	yes	no	no	no	-	yes			
SENGEREMA	Kazunzu	108	Bulyahege	6,361	4,628	5,220	2005	0	0	-	0	0	1	0	0	0	0	0	yes	0	-	yes	yes	yes	yes	no	no	no	-	yes			
SENGEREMA	Kazunzu	110	Jyamchele	3,104	1,526	2,570	2005	0	0	-	0	0	6	0	0	0	0	0	0	0	-	yes	yes	yes	yes	no	no	no	-	yes			
SENGEREMA	Kazunzu	114	Luharanyonga	4,180	3,102	3,240	2004	5	0	-	0	0	10	5	0	0	0	0	0	0	-	yes	yes	yes	yes	no	no	yes	-				
SENGEREMA	Kazunzu	115	Isengenge	1,603	2,750	4,000		0	0	-	0	0	3	0	0	0	0	0	0	0	-	yes	yes	yes	yes	no	no	no	-	yes			
SENGEREMA	Nyakasangwa	118	Nyakasangwa	5,488	5,477	5,489	2005	1	0	-	0	0	1	1	0	0	0	0	0	0	-	yes	yes	yes	yes	no	no	yes	-				
SENGEREMA	Nyakasangwa	119	Igwanzozo	1,600	1,303	1,427	2005	0	0	-	0	0	4	0	0	0	0	0	0	0	-	yes	yes	yes	yes	no	no	no	-				
KWIMBA	Nugudu	3	Iurumba	2,523	2,213	3,150	2004	1	0	-	10	1	0	11	1	0	0	0	0	yes	-	yes	yes	yes	no	no	yes	-					
KWIMBA	Hungumalwa	22	Hungumalwa	4,883	4,952	4,635	2005	7	0	-	0	0	0	7	0	0	0	0	0	0	-	yes	yes	yes	yes	no	no	yes	-				
KWIMBA	Hungumalwa	24	Manayi	3,427	3,399	2670	2004	1	0	-	0	0	0	0	0	0	0	0	0	yes	-	yes	yes	yes	no	no	yes	-					
KWIMBA	Hungumalwa	25	Ihula	3,022	2,932	2,722	2004	1	2	-	1	2	0	2	4	0	0	0	0	yes	-	yes	yes	yes	yes	no	no	yes	-				
KWIMBA	Mwamala	31	Kijidi	2,816	2,855	3,630	2004	2	0	-	2	0	0	4	0	0	0	0	0	yes	-	yes	yes	yes	yes	no	no	yes	-				
KWIMBA	Mwamala	34	Igumangobo	1,726	1,764	1,913	2004	0	0	-	0	0	yes	0	0	0	0	0	0	0	-	yes	yes	yes	yes	no	no	no	-				
KWIMBA	Mwamala	35	Shigangama	2,546	2,609	2,345	2004	0	0	-	0	0	6	0	0	0	0	0	0	0	-	yes	yes	yes	yes	-	-	-	-				
KWIMBA	Kikubiji	40	Mwamitnje	909	898	1,034	2004	0	0	-	0	0	0	yes	0	0	0	0	0	0	-	Rive	yes	yes	yes	no	yes	-	-				
KWIMBA	Mhande	44	Izizimba A	3,490	3,466	4,250	2004	-	-	-	-	-	yes	0	0	0	0	0	0	0	-	no	no	no	no	no	no	-	-				
KWIMBA	Mhande	45	Izizimba B	2,616	2,610	2,184	2005	0	0	-	0	0	14	0	0	0	0	0	0	0	-	yes	yes	yes	yes	no	yes	-	-				

Well Inventory Survey (Water Sources in the Village 2/10)

DISTRICT	LOCATION			POPULATION			EXISTING LIST											VILLAGE SURVEY													
	Ward	No. by District	Village	A: Population in List (2004)	B: Population in Census (2002)	C: Population (from survey)	Population year	Existing Water Source						Surveyed Water Source					Water Use					Water Quality		Remarks					
								Functional			Non Functional			Well			Spring	Dam	Lake water	Pump operation	Others	Drinking	Cooking	Washing	Bathing		Agriculture	Live stock	Others	good	bad
								SW	BH	Others	SW	BH		Dug	Shallow	borehole															
KWIMBA	Fukalo	55	Sanga	3,145	3,147	4500	2004	0	0	-	0	0	yes	0	0	0	0	0	0	0	-	yes	yes	yes	yes	no	no	-			
KWIMBA	Sumve	61	Nyamikoma	1,537	1,524	1,622	2005	5	0	-	0	0	-	5	0	0	0	0	yes	-	yes	yes	yes	yes	yes	yes	-	yes			
KWIMBA	Mantare	66	Mwampulu	2,764	2,728	3,123	2004	1	0	-	0	0	0	1	0	0	0	0	yes	-	yes	yes	yes	no	no	no	yes				
KWIMBA	Ngullila	68	Ngulla	2,762	2,740	2,575	2005	0	0	-	0	0	0	0	0	1	0	0	0	-	yes	yes	yes	yes	yes	no	no	yes			
KWIMBA	Ngullila	69	Nyamatala	3,259	3,248	7,440	2005	10	0	-	0	0	0	10	0	0	0	0	yes	-	yes	yes	yes	no	no	no	yes				
KWIMBA	Ngullila	70	Nyambuyi	1,920	1,903	2,961	2005	0	0	-	0	0	yes	0	0	0	0	0	0	-	no	no	no	no	no	no	-				
KWIMBA	Ngullila	71	Mhulya	2,101	2,135	2,101	2005	0	0	-	0	0	0	0	0	0	0	0	0	-	no	no	no	no	no	no	-				
KWIMBA	Mwabomba	72	Mwangika	1,936	1,922	2,840	2004	1	0	-	0	0	0	1	0	0	0	0	0	-	yes	yes	no	no	no	no	yes				
KWIMBA	Mwabomba	74	Ngogo	3,062	3,037	1,672	2005	0	2	-	0	5	0	0	7	0	0	0	yes	-	yes	yes	yes	no	no	no	yes				
KWIMBA	Isene	82	Bungandando	3,601	3,555	3,384	2004	6	0	-	0	0	0	6	0	0	0	0	yes	-	yes	yes	yes	no	no	no	yes				
KWIMBA	Isene	83	Icheja	1,351	1,329	1,980	2004	5	0	-	0	0	0	5	0	0	0	0	0	-	yes	yes	yes	yes	no	no	yes				
KWIMBA	Iseni	84	Mwaswenghele	2,413	4,749	2,122	2005	6	0	-	0	0	0	0	6	0	0	0	0	-	yes	yes	yes	yes	yes	no	no	-			
KWIMBA	Isene	85	Nyamigamba	4,460	4,456	7,680	2004	4	0	-	0	0	0	4	0	0	0	0	0	-	yes	yes	yes	yes	no	no	no	yes			
MAGU	Kahangara	1	Nyamahanga	2,328	2,271	2,440	2005	0	1	-	0	2	0	0	3	0	0	0	0	yes	-	yes	yes	-	-	-	-	yes			
MAGU	Mwamanga	6	Ino'elo	2,081	2,016	2,053	2004	1	0	-	6	0	0	6	1	0	0	0	0	yes	-	yes	yes	yes	-	-	-	yes			
MAGU	Sukuma	13	Kitongosima	4,091	4,009	3,885	2002	4	0	-	1	0	0	5	0	0	0	0	0	yes	-	yes	yes	-	-	-	-	yes			
MAGU	Magu Mjini	22	Bubinza	3,999	3,810	4,632	2005	1	0	-	2	0	0	3	0	0	0	0	yes	-	yes	yes	yes	yes	-	-	-	yes			
MAGU	Nghaya	26	Bugatu	4,445	4,251	4,962	2005	10	0	-	0	0	0	10	0	0	0	0	0	yes	-	yes	yes	yes	-	-	-	yes			
MAGU	Shishnani	32	Mahaha	8,074	7,659	9,742	2004	19	0	-	0	0	0	19	0	0	0	0	0	-	yes	yes	yes	yes	-	-	-	yes			
MAGU	Shishnani	33	Nyasoto	3,272	3,044	2,585	2002	4	0	-	0	0	0	4	0	0	0	0	0	yes	-	-	-	-	-	-	-	yes			
MAGU	Kisesa	37	Igekemaja	2,800	2,507	2,452	2004	1	0	-	0	0	0	1	0	0	0	0	0	yes	-	yes	yes	yes	-	-	-	yes			
MAGU	Kisesa	38	Kitumba	5,274	4,104	3,267	2004	4	0	-	0	0	0	4	0	0	0	0	0	yes	-	yes	yes	yes	-	-	-	yes			
MAGU	Mwamanyili	43	Mwagulanja	2,973	2,853	2,467	2005	5	0	-	0	0	0	5	0	0	0	0	0	yes	-	yes	yes	yes	-	-	-	yes			
MAGU	Mwamanyili	44	Builima	6,138	5,455	2,500	2005	2	0	-	0	1	0	2	0	0	0	0	0	yes	-	yes	yes	yes	-	-	-	yes			
MAGU	Shigala	50	Ihayabuyaga B	3,137	3,016	3,066	2005	2	0	-	1	0	0	3	0	0	0	0	0	yes	-	yes	yes	yes	-	-	-	yes			
MAGU	Shigala	51	Lwagwe	1,508	1,465	1,785	2005	0	0	-	0	0	0	0	0	0	0	0	0	-	-	-	-	-	-	-	-	-			
MAGU	Kabita	55	Simaniwe	2,252	2,156	2,118	2005	0	0	-	0	0	0	1	0	0	0	0	0	yes	-	yes	yes	yes	-	-	-	yes			
MAGU	Badugu	58	Badugu	4,763	4,575	4,130	2002	0	3	-	0	0	0	0	3	0	0	0	0	yes	-	yes	yes	yes	-	-	-	yes			
MAGU	Badugu	59	Manala	1,604	1,534	1,300	2003/4	3	1	-	1	0	0	4	1	0	0	0	0	yes	-	yes	yes	-	-	-	-	yes			
MAGU	Kalemela	66	Lukungu	2,943	2,826	5,000	2005	0	0	-	2	0	0	2	0	0	0	0	0	yes	-	yes	yes	yes	-	-	-	yes			
MAGU	Kalemela	67	Mayega	2,456	2,359	3,760	2005	1	0	-	0	0	0	1	0	0	0	0	0	yes	-	-	-	-	-	-	-	yes			
MAGU	Mkula	74	Mwakiloba	2,723	2,624	2,321	2005	0	0	-	1	1	0	0	0	0	0	0	0	0	-	-	-	-	-	-	-	-			
MAGU	Mkula	75	Kijereshi	5,909	5,646	9,882	2005	1	0	-	1	0	0	2	0	0	0	0	0	0	-	yes	yes	yes	yes	-	-	-	yes		
MAGU	Igalukilo	78	Nyangili	2,530	2,395	2,804	-	8	0	-	1	0	0	9	0	0	0	0	0	yes	-	yes	yes	-	-	-	-	yes			
MAGU	Malili	80	Malili	1,805	1,631	1,632	-	3	0	-	2	0	0	5	0	0	0	0	0	yes	-	-	-	-	-	-	-	yes			
MAGU	Malili	83	Mwamigongwa	1,652	1,567	4,900	2005	2	0	-	0	1	0	2	0	0	0	0	0	yes	-	yes	yes	yes	-	-	-	yes			
GEITA	Nzera	2	Igate	6,050	4,220	1,600	2005	0	0	-	0	0	0	2	0	0	-	-	-	-	-	yes	yes	yes	yes	-	-	-	-		
GEITA	Nzera	3	Idosero	6,025	3,690	6,018	2005	0	0	-	0	0	0	3	0	0	-	-	-	-	-	yes	yes	yes	yes	-	-	-	-		
GEITA	Nzera	4	Lwenzera	6,751	10,759	10,796	2005	0	0	-	0	0	0	1	0	0	-	-	-	-	-	-	-	-	-	-	-	-	-		
GEITA	Nzera	5	Nzera	8,643	6,852	6,885	2005	5	0	-	2	0	0	6	7	0	-	-	-	-	-	yes	yes	yes	yes	-	-	-	yes		
GEITA	Senga	6	Buligi	6,172	6,935	9,660	2005	0	0	-	0	0	0	5	0	0	-	-	-	-	-	-	-	-	-	-	-	-			
GEITA	Senga	8	Kakubilo	6,171	13,331	13,379	2005	0	0	-	0	0	0	6	0	0	-	-	-	-	-	-	-	-	-	-	-	-			
GEITA	Senga	9	Nyabalasana	5,090	-	3,360	2005	0	0	-	0	0	0	4	0	0	-	-	-	-	-	-	-	-	-	-	-	-			
GEITA	Senga	10	Kaseni	4,890	2,906	2,916	2002	0	0	-	0	0	0	4	0	0	-	-	-	-	-	-	-	-	-	-	-	-			
GEITA	Nkome	14	Nyamboge	7,248	7,047	7,085	2002	0	0	-	0	0	0	10	0	0	-	-	-	-	-	-	-	-	-	-	-	-			
GEITA	Nkome	15	Katoma	7,249	6,508	7,481	2005	0	0	-	1	0	0	4	1	0	-	-	-	-	-	-	-	-	-	-	-	-			

## Well Inventory Survey (Water Sources in the Village 3/10)





DISTRICT	LOCATION			POPULATION				EXISTING LIST			VILLAGE SURVEY																				
	Ward	No. by District	Village	A: Population in List (2004)	B: Population in Census (2002)	C: Population (from survey)	Population year	Existing Water Source			Surveyed Water Source					Water Use					Water Quality										
								Functional	Non Functional	Well	SW	BH	Others	Dug	Shallow borehole	Spring	Dam	Lake water	Pump operation	Others	Drinking	Cooking	Washing	Bathing	Agriculture	Live stock	Others	Quality	Remarks		
MUSOMA	Butuguri	19	kibubwa	3,000	2,431	3,673	2005	0	0	-	0	0	8	0	0	0	0	0	-	yes	yes	yes	yes	-	-	-	-	-	-	-	-
MUSOMA	Butuguri	20	Busegwe	4,638	4,653	7,211	2005	0	0	-	0	0	8	0	0	0	0	0	-	yes	yes	yes	yes	-	-	-	-	-	-	-	-
MUSOMA	Butuguri	21	Kisamwene	2,339	3,375	3,778	2005	0	0	-	0	0	8	0	0	0	0	0	-	yes	yes	yes	yes	-	-	-	-	-	-	-	-
MUSOMA	Bukabwa	23	Bukabwa	2,793	2,791	2,932	2004	0	0	-	0	0	5	0	0	0	0	0	-	yes	yes	yes	yes	-	-	-	-	-	-	-	-
MUSOMA	Bukabwa	24	Mmazami	3,808	3,812	7,560	2005	1	0	-	3	0	8	4	0	0	0	0	-	yes	yes	yes	yes	-	-	-	-	-	-	-	yes
MUSOMA	Bukabwa	25	Kirumi	2,357	2,359	2,357	2005	0	0	-	0	0	2	0	0	0	0	0	-	yes	yes	yes	yes	-	-	-	-	-	-	-	-
MUSOMA	Kiriba	26	Mwiringo	2,642	2,645	2,010	2005	1	0	-	1	0	5	2	0	0	0	0	-	yes	yes	yes	yes	-	-	-	-	-	-	-	yes
MUSOMA	Kiriba	27	Bwaikwitururu	4,050	4,054	4,076	2005	1	0	-	1	0	5	2	0	0	0	0	-	yes	yes	yes	yes	-	-	-	-	-	-	-	yes
MUSOMA	Kiriba	28	Bwaikumsoma	5,828	5,021	6,523	2005	0	0	-	0	0	0	0	0	0	0	0	-	yes	yes	yes	yes	-	-	-	-	-	-	-	-
MUSOMA	Suguti	31	Chirorwe	2,483	2,486	3,987	2005	0	0	-	0	0	4	0	0	0	0	0	-	yes	yes	yes	yes	-	-	-	-	-	-	-	yes
MUSOMA	Suguti	32	Wanyere	2,936	2,955	5,615	2005	0	0	-	2	0	4	2	0	0	0	0	-	yes	yes	-	yes	-	-	-	-	-	-	-	-
MUSOMA	Nyambono	33	Bugoji	4,339	4,155	5,120	2005	2	0	-	2	0	3	4	0	0	0	0	-	yes	yes	yes	yes	-	-	-	-	-	-	-	yes
MUSOMA	Nyambono	35	Saragana	3,557	3,538	6,000	2005	0	0	-	0	1	3	0	1	0	0	0	yes	yes	yes	yes	-	-	-	-	-	-	-	-	-
MUSOMA	Nyambono	36	Kaburabura	1,711	1,714	2,400	2005	0	0	-	0	0	3	0	0	0	0	0	-	yes	yes	yes	yes	-	-	-	-	-	-	-	-
MUSOMA	Kukirango	42	Mwanzaburiga	2,277	2,301	2,552	2005	0	0	-	3	0	10	3	0	0	0	0	-	yes	yes	yes	yes	-	-	-	-	-	-	-	yes
MUSOMA	Masaba	45	Kwigutu	3,188	2,649	3,150	2004	1	0	-	1	0	15	2	0	0	0	0	-	yes	yes	yes	yes	-	-	-	-	-	-	-	-
MUSOMA	Masaba	46	Nyasirozi	2,694	3,214	2,214	2005	2	0	-	0	0	0	2	0	0	0	0	-	yes	yes	yes	yes	-	-	-	-	-	-	-	yes
MUSOMA	Kinyari	47	Nyamikoma	4,045	3,998	4,246	2005	2	0	-	4	0	0	14	6	0	0	0	-	yes	yes	yes	yes	-	-	-	-	-	-	-	-
MUSOMA	Nyakanga	50	Nyakanga	3,163	5,122	3,163	2005	0	1	-	0	1	0	0	2	0	0	0	yes	yes	yes	yes	-	-	-	-	-	-	-	-	yes
MUSOMA	Nyankanga	52	Nyankanga	1,123	1,113	1,890	2005	0	0	-	0	0	1	0	0	0	0	0	-	yes	yes	yes	yes	-	-	-	-	-	-	-	-
MUSOMA	Nyakanga	53	Bisumwa	3,712	3,710	4,156	2000	0	0	-	0	0	20	0	0	0	0	0	-	yes	yes	yes	yes	-	-	-	-	-	-	-	yes
MUSOMA	Nyankanga	54	Nyabekwabi	4,090	4,084	3,728	2005	0	0	-	0	0	9	0	0	0	0	0	-	yes	yes	yes	yes	-	-	-	-	-	-	-	-
MUSOMA	Buruma	55	Isaba	3,024	3,160	2,900	2005	2	0	-	1	0	3	3	0	0	0	0	-	yes	yes	-	-	-	-	-	-	-	-	-	yes
MUSOMA	Buruma	56	Songora	3,024	5,621	6,086	2005	0	0	-	0	0	1	0	0	0	0	0	-	yes	yes	yes	yes	-	-	-	-	-	-	-	-
MUSOMA	Buruma	58	Ryamugabo	2,100	2,106	2,850	2004	0	0	-	0	0	6	0	0	0	0	0	-	yes	yes	yes	yes	-	-	-	-	-	-	-	yes
MUSOMA	Bugwema	59	Bugwema	1,077	1,779	3,700	2004	0	0	-	0	0	1	0	0	0	0	0	yes	yes	yes	yes	-	-	-	-	-	-	-	-	-
MUSOMA	Bugwema	60	Masinono	2,520	2,542	5,500	2005	0	0	-	0	0	20	0	0	0	0	0	yes	yes	yes	yes	-	-	-	-	-	-	-	-	-
MUSOMA	Bugwema	61	Muhoji	1,710	1,710	1,710	2005	0	0	-	0	0	1	0	0	0	0	0	-	yes	yes	yes	yes	-	-	-	-	-	-	-	yes
MUSOMA	Murangi	64	Mabuimerafu	1,905	1,908	3,283	5005	0	0	-	0	0	4	0	0	0	0	0	-	yes	yes	yes	yes	-	-	-	-	-	-	-	yes
MUSOMA	Murangi	65	Musanja	3,921	3,937	5,200	2005	0	0	-	0	0	0	0	0	0	0	0	-	yes	yes	yes	yes	-	-	-	-	-	-	-	-
MUSOMA	Bukima	67	Butata	4,983	4,938	3,062	2003	1	0	-	0	0	2	1	0	0	0	0	yes	yes	yes	yes	-	-	-	-	-	-	-	-	yes
MUSOMA	Bukima	68	Buanga	2,472	2,481	5,615	2005	0	0	-	0	0	6	0	0	0	0	0	-	yes	yes	yes	-	-	-	-	-	-	-	-	-
MUSOMA	Bukima	69	Rusoli	2,831	2,836	2,040	2005	0	0	-	0	0	3	0	0	0	0	0	yes	yes	yes	yes	-	-	-	-	-	-	-	-	yes
MUSOMA	Bukima	70	Kwikerego	970	970	1,168	2005	0	0	-	0	0	1	0	0	0	0	0	-	yes	yes	yes	yes	-	-	-	-	-	-	-	yes
MUSOMA	Bukumi	72	Bukumi	2,915	2,272	2,915	2005	0	0	-	0	0	2	0	0	0	0	0	-	yes	yes	yes	yes	-	-	-	-	-	-	-	-
MUSOMA	Tegeruka	74	Maneke	3,305	3,306	3,305	2005	1	0	-	1	0	5	2	0	0	0	0	-	yes	yes	yes	-	-	-	-	-	-	-	-	yes
MUSOMA	Tegeruka	75	Tegeruka	2,236	2,231	2,989	2005	0	0	-	1	1	4	1	1	0	0	0	-	yes	yes	yes	yes	-	-	-	-	-	-	-	-
MUSOMA	Tegeruka	77	Kataro	2,610	2,617	1,540	2005	0	0	-	2	0	1	0	0	0	0	0	-	yes	yes	yes	yes	-	-	-	-	-	-	-	-
MUSOMA	Bwasi	80	Bulinga	3,612	3,589	4,600	2005	0	0	-	0	0	5	0	0	0	0	0	yes	yes	yes	yes	-	-	-	-	-	-	-	-	-
MUSOMA	Makojo	82	Chitane	3,495	3,509	4,050	2004	2	0	-	0	0	3	2	0	1	0	0	-	yes	yes	yes	yes	-	-	-	-	-	-	-	yes
MUSOMA	Makojo	83	Chimati	2,029	2,031	2,029	2005	0	0	-	0	0	3	0	0	0	0	1	-	yes	yes	yes	yes	-	-	-	-	-	-	-	-
MUSOMA	Makojo	84	Makojo	2,067	2,111	2,047	2005	0	0	-	0	0	3	0	0	0	0	0	-	yes	yes	yes	yes	-	-	-	-	-	-	-	yes
MUSOMA	Nyamrandira	87	Seka	2,765	2,778	3,320	2003	0	0	-	1	0	3	1	0	0	0	0	-	yes	yes	yes	yes	-	-	-	-	-	-	-	yes
MUSOMA	Nyamrandira	88	Mikuyu	1,500	1,404	1,980	2005	0	0	-	1	0	2	1	0	0	0	0	-	yes	yes	yes	yes	-	-	-	-	-	-	-	yes
MUSOMA	Etaro	91	Mmahate	1,080	1,082	3,606	2005	0	0	-	0	0	0	0	0	0	0	0	yes	yes	yes	yes	-	-	-	-	-	-	-	-	-
MUSOMA	Etaro	92	Mkirira	2,624	2,626	2,624	2005	0	0	-	0	0	4	0	0	0	0	0	-	yes	yes	yes	yes	-	-	-	-	-	-	-	-

Well Inventory Survey (Water Sources in the Village 6/10)

LOCATION			POPULATION			EXISTING LIST		VILLAGE SURVEY																						
DISTRICT	Ward	No. by District	Village	A. Population in List (2004)	B. Population in Census (2002)	C. Population (from survey)	Population year	Existing Water Source						Surveyed Water Source						Water Use			Water Quality		Remarks					
								Functional			Non Functional			Well		Spring	Dam	Lake water	Pump operation	Others	Drinking	Cooking	Washing	Bathing		Agriculture	Live stock	Others	Quality	good
SW	BH	Others	SW	BH	Others	Dug	Shallow borehole	Others	Drinking	Cooking	Washing	Bathing	Agriculture	Live stock	Others										Quality					
MUSOMA	Etaro	93	Rubuka	2,016	1,673	2,016	2005	0	0	-	0	0	0	0	0	0	0	0	-	-	-	-	-	-	-	-	-			
MUSOMA	Nyakatende	94	Kabegi	2,245	2,214	3,660	2005	1	0	-	1	0	0	0	2	0	0	0	0	-	yes	yes	yes	yes	-	yes	-	-		
MUSOMA	Nyakatende	97	Klamba	3,174	3,202	3,250	2005	0	0	-	0	0	0	0	0	0	0	yes	0	-	yes	yes	yes	yes	-	-	-	-		
MUSOMA	Nyakatende	98	Kigera-etuma	7,077	5,697	4,053	2005	0	0	-	0	0	2	0	0	0	0	0	0	-	yes	yes	yes	yes	-	yes	-	yes		
MUSOMA	Mugango	99	Kwikuba	1,456	1,457	1,491	2005	1	0	-	1	0	7	2	0	0	0	0	0	-	yes	yes	yes	yes	-	-	-	-		
MUSOMA	Kiriba	103	Mwringo	2,751	2,776	2,010	2005	0	0	-	1	0	5	2	0	0	0	0	0	-	-	-	-	-	-	yes	-	-		
TARIME	Turwa	5	Kenyamanyori	3,500	3,860	3,444	1997	6	0	-	0	-	8	6	0	0	0	0	0	-	Yes	Yes	Yes	Yes	-	-	-	-		
TARIME	Turwa	7	Nkende	4,580	3,121	-	-	0	0	-	-	-	-	0	0	0	0	0	0	-	-	Yes	Yes	Yes	Yes	-	-	-	-	
TARIME	Turwa	8	Magena	2,428	2,314	2,450	2004	6	0	-	0	-	Yes	6	0	0	0	0	0	-	Yes	Yes	Yes	Yes	-	-	-	-		
TARIME	Binagi	12	Mogabini	4,512	5,291	-	-	0	0	-	-	-	-	0	0	0	0	0	0	-	Yes	Yes	Yes	Yes	-	-	-	-		
TARIME	Binagi	14	Nyasaricho	3,418	1,025	-	-	0	0	-	-	-	-	0	0	0	0	0	0	-	River	Yes	Yes	Yes	Yes	-	-	-	-	
TARIME	Nyarero	15	Kemakore	3,119	4,360	5,040	2002	0	0	-	-	-	8	0	0	0	0	0	0	-	Yes	Yes	Yes	Yes	-	-	-	-		
TARIME	Nyarero	16	Nyarero	2,118	2,745	2,972	2004	1	0	-	2	-	-	3	0	0	0	0	0	-	Yes	Yes	Yes	Yes	-	Yes	-	-	-	
TARIME	Nyarero	17	Soroneta	2,340	2,645	-	-	3	0	-	1	-	6	4	0	0	0	0	0	-	Yes	Yes	Yes	Yes	-	-	-	-	-	
TARIME	Nyarero	18	Rosana	3,629	1,275	1,850	2002	0	0	-	-	-	6	0	0	0	0	0	0	-	Yes	Yes	Yes	Yes	-	-	-	-	-	
TARIME	Nyakonga	19	Magoto	3,680	3,505	-	-	0	0	-	-	-	Yes	0	0	0	0	0	0	-	Yes	Yes	Yes	Yes	-	-	-	-	-	
TARIME	Nyakonga	20	Burega A	3,115	3,150	3,020	2005	1	0	-	0	-	Yes	1	0	0	0	0	0	-	Yes	Yes	Yes	Yes	-	-	-	-	-	
TARIME	Nyakonga	21	Garyange	2,816	2,794	2,755	-	0	0	-	-	-	Yes	0	0	0	0	0	0	-	Yes	Yes	Yes	Yes	-	Yes	-	-	-	
TARIME	Nyakonga	22	Kebweye	2,012	2,105	980	2005	0	0	-	-	-	Yes	0	0	0	0	0	0	-	Yes	Yes	Yes	Yes	-	Yes	-	-	-	
TARIME	Kibesuka	23	Nyarwana	3,915	3,790	3,886	2005	0	0	-	-	1	Yes	0	1	0	0	0	0	-	Yes	Yes	Yes	Yes	-	-	-	-	-	
TARIME	Kibesuka	24	Nyankunguru	3,105	4,102	4,220	2005	0	0	-	-	-	Yes	0	0	0	0	0	0	-	Yes	Yes	Yes	Yes	-	-	-	-	-	
TARIME	Kibesuka	25	Wegita	3,416	2,849	-	-	0	0	-	1	-	Yes	1	0	0	0	0	0	-	Yes	Yes	Yes	Yes	-	-	-	-	-	
TARIME	Muriba	29	Muriba	5,035	5,255	-	-	0	0	-	-	-	Yes	0	0	0	0	0	0	-	Yes	Yes	Yes	Yes	-	-	-	-	-	
TARIME	Muriba	30	Bungurere	3,900	2,476	2,689	2005	0	0	-	-	-	Yes	0	0	0	0	0	0	-	Yes	Yes	Yes	Yes	-	Yes	-	-	-	
TARIME	Muriba	31	Kobari	3,519	1,838	2,000	2004	0	0	-	-	-	Yes	0	0	0	0	0	0	-	Yes	Yes	Yes	Yes	-	Yes	-	-	-	
TARIME	Muriba	32	Nyantira	4,180	6,476	6,550	2005	0	0	-	1	-	Yes	0	1	0	0	0	0	-	Yes	Yes	Yes	Yes	-	-	-	-	-	
TARIME	Nyanungu	33	Mangucha	6,409	5,217	10,000	2005	0	0	-	-	-	Yes	0	0	0	0	0	0	-	Yes	Yes	Yes	Yes	-	-	-	-	-	
TARIME	Nyanungu	34	Iitiryo	7,816	5,746	5,709	2002	0	0	-	-	-	Yes	0	0	0	0	0	0	-	Yes	Yes	Yes	Yes	-	-	-	-	-	
TARIME	Nyanungu	35	Kegonga	4,310	4,271	4,250	2005	2	0	-	0	-	Yes	2	0	0	0	0	0	-	Yes	Yes	Yes	Yes	-	-	-	-	-	
TARIME	Nyarukoba	36	Gibasa	6,021	6,112	6,423	2005	3	0	-	2	-	-	5	0	0	0	0	0	-	Yes	Yes	Yes	Yes	-	-	-	-	-	
TARIME	Nyarukoba	37	Genkuru	5,349	5,171	8,600	2004	0	0	-	-	-	Yes	0	0	0	0	0	0	-	Yes	Yes	Yes	Yes	-	Yes	-	-	-	
TARIME	Gorong'a	38	Kangariani	3,219	3,319	-	-	0	0	-	-	-	-	-	0	0	0	0	0	-	-	-	-	-	-	-	-	-	-	
TARIME	Gorong'a	39	Kitawasi	3,600	5,240	-	-	0	0	-	-	-	Yes	0	0	0	0	0	0	-	Yes	Yes	Yes	Yes	-	-	-	-	-	
TARIME	Gorong'a	40	Masanga	3,250	4,711	5,000	2004	0	0	-	-	-	Yes	0	0	0	0	0	0	-	Yes	Yes	Yes	Yes	-	-	-	-	-	
TARIME	Matongo	41	Matongo	4,970	2,934	-	-	0	0	-	-	-	Yes	0	0	0	0	0	0	-	Yes	Yes	Yes	Yes	-	-	-	-	-	
TARIME	Kemange	43	Kerende	3,653	-	3,200	2004	0	0	-	-	-	Yes	0	0	0	0	0	0	-	Yes	Yes	Yes	Yes	-	Stree	-	-	-	-
TARIME	Kemange	44	Kiwanja	2,501	-	4,096	2005	0	0	-	-	-	Yes	0	0	0	0	0	0	-	Yes	Yes	Yes	Yes	-	-	-	-	-	
TARIME	Kemange	45	Murto	4,018	-	-	-	0	0	-	-	-	Yes	0	0	0	0	0	0	-	Mara River	Yes	Yes	Yes	Yes	-	-	-	-	-
TARIME	Sirari	47	Remagwe	3,670	2,279	-	-	0	0	-	-	-	Yes	0	0	0	0	0	0	-	Yes	Yes	Yes	Yes	-	-	-	-	-	
TARIME	Sirari	49	Kitagasembe	3,200	1,574	4,500	2002	0	0	-	-	-	Yes	0	0	0	0	0	0	-	Yes	Yes	Yes	Yes	-	-	-	-	-	
TARIME	Sirari	50	N'gereng'ere	3,500	2,102	2,450	2002	2	0	-	0	-	-	2	0	0	0	0	0	-	Yes	Yes	Yes	Yes	-	-	-	-	-	
TARIME	Pemba	51	Getenga	2,127	3,287	1,300	2005	0	0	-	3	-	Yes	3	0	0	0	0	0	-	Yes	Yes	Yes	Yes	-	-	-	-	-	
TARIME	Pemba	52	Kyoruba	2,315	2,549	1,200	2005	0	0	-	-	-	Yes	0	0	0	0	0	0	-	Yes	Yes	Yes	Yes	-	-	-	-	-	
TARIME	Pemba	53	Pemba	3,521	1,960	1,980	2005	0	0	-	-	-	Yes	0	0	0	0	0	0	-	River Raintubu	Yes	Yes	Yes	Yes	-	-	-	-	-
TARIME	Pemba	54	Nyabitocho	2,819	2,098	-	-	0	0	-	-	-	Yes	0	0	0	0	0	0	-	Yes	Yes	Yes	Yes	-	Yes	-	-	-	
TARIME	Pemba	55	Nyabisaga	2,717	4,134	-	-	0	0	-	-	-	Yes	0	0	0	0	0	0	-	Yes	Yes	Yes	Yes	-	Yes	-	-	-	

Well Inventory Survey (Water Sources in the Village 7/10)



DISTRICT	LOCATION			POPULATION				EXISTING LIST										VILLAGE SURVEY														
	Ward	No. by District	Village	A: Population in List (2004)	B: Population in Census (2002)	C: Population (from survey)	Population year	Existing Water Source					Surveyed Water Source					Water Use					Water Quality									
								Functional			Non Functional		Well			Lake water		Pump		Others	Drinking	Cooking	Washing	Bathing	Agriculture	Live stock	Others	Quality	Remarks			
								SW	BH	Others	SW	BH	Dug	Shallow	borehole	Spring	Dam	Lake water	Pump											operation		
TARIME	Pemba	56	Borega B	2,514	2,157	2,600	2004	4	0	-	0	-	Yes	4	0	0	0	0	0	-	Yes	Yes	Yes	Yes	-	Yes	-	-	-	-		
TARIME	Susuni	57	Kiongera	2,865	3,083	2,016	2002	0	0	-	-	-	7	0	0	0	0	0	0	-	Yes	Yes	Yes	Yes	-	-	-	-	-	-		
TARIME	Susuni	58	Nyabirongo	2,606	3,290	-	-	0	0	-	-	-	Yes	0	0	0	0	0	0	-	Yes	Yes	Yes	Yes	-	-	-	-	-	-		
TARIME	Susuni	59	Kikomori	2,624	1,914	2,350	2002	0	0	-	-	-	19	0	0	0	0	0	0	-	Yes	Yes	Yes	Yes	-	Yes	-	-	-	-		
TARIME	Mwema	60	Kubiterere	2,513	3,138	3,144	2002	0	0	-	-	-	13	0	0	0	0	0	0	-	Yes	Yes	Yes	Yes	-	-	-	-	-	-		
TARIME	Mwema	61	Korolamba	3,280	3,239	3,300	2002	0	0	-	-	-	4	0	0	0	0	0	0	-	Yes	Yes	Yes	Yes	-	-	-	-	-	-		
TARIME	Mwema	62	Nyamhunda	2,419	2,034	1,680	2005	0	0	-	-	-	15	0	0	0	0	0	0	-	Yes	Yes	Yes	Yes	-	-	-	-	-	-		
TARIME	Nyandoto	63	Kewamamba	1,426	1,627	3,790	2004	0	0	-	-	-	-	0	0	0	0	0	0	-	Okengere & Mbasoti streams	Yes	Yes	Yes	Yes	-	-	-	-	-	-	
TARIME	Nyandoto	64	Nkerege	1,989	2,482	4,130	2005	1	1	-	1	0	Yes	2	1	0	0	0	0	0	-	Yes	Yes	Yes	Yes	-	-	-	-	-	-	
TARIME	Nyandoto	65	Nyagisya	2,603	1,807	2,500	2004	0	0	-	-	-	Yes	0	0	0	0	0	0	-	Stream	Yes	Yes	Yes	Yes	-	Yes	-	-	-	-	
TARIME	Nyandoto	66	Gamasara	2,513	2,162	4,350	2005	2	0	-	0	-	1	2	0	0	0	0	0	-	Yes	Yes	Yes	Yes	-	-	-	-	-	-		
TARIME	Nyandoto	67	Kemange	3,680	3,682	-	-	0	1	-	0	0	-	0	1	0	0	0	0	0	-	Yes	Yes	Yes	Yes	-	-	-	Yes	-	-	
TARIME	Manga	68	Mutana	2,120	1,828	1,170	2002	0	0	-	1	-	Yes	1	0	0	0	0	0	0	-	Yes	Yes	Yes	Yes	-	Yes	-	-	-	-	
TARIME	Manga	69	Sombanyasoko	2,016	847	841	-	1	0	-	0	-	Yes	1	0	0	0	0	0	0	-	Yes	Yes	Yes	Yes	-	-	-	Yes	-	-	
TARIME	Manga	70	Surubu	1,420	2,553	7,500	2005	0	0	-	-	-	Yes	0	0	0	0	0	0	-	Sulubu Charcoal dam	Yes	Yes	Yes	Yes	-	-	-	-	-	-	
TARIME	Manga	71	Bisarwi	1,812	2,618	-	-	1	0	-	0	-	Yes	Yes	0	0	0	0	0	0	-	Yes	Yes	Yes	Yes	-	-	-	-	-	-	
TARIME	Manga	73	Nyamirambaro	1,503	1,481	1,183	2005	0	0	-	-	-	Yes	0	0	0	0	0	0	0	-	Yes	Yes	Yes	Yes	-	Yes	-	-	-	-	
TARIME	Eumera	74	Kiterere	1,680	931	1,200	2005	2	0	-	4	-	5	6	0	0	0	0	0	-	Yes	Yes	Yes	Yes	-	Yes	-	-	-	-	-	
TARIME	Eumera	75	Turgeti	1,915	1,713	2,592	2005	0	0	-	-	-	8	0	0	0	0	0	0	-	Yes	Yes	Yes	Yes	-	Yes	-	-	-	-	-	
TARIME	Eumera	76	Kwisarara	2,111	2,289	2,619	2004/5	0	0	-	-	-	11	0	0	0	0	0	0	-	Yes	Yes	Yes	Yes	-	Yes	-	-	-	-	-	
TARIME	Eumera	77	Kitenga	2,305	3,079	3,688	2004/5	0	0	-	-	-	20	0	0	0	0	0	0	-	Yes	Yes	Yes	Yes	-	Yes	-	-	-	-	-	
TARIME	Bukwe	78	Buganja	3,100	3,064	-	-	0	0	-	-	-	-	0	0	0	0	0	0	-	Charcoal dam & stream	Yes	Yes	Yes	Yes	-	-	-	-	-	-	
TARIME	Bukwe	79	Mika	1,600	2,486	4,400	2005	0	0	-	-	-	Yes	0	0	0	0	0	0	-	Yes	Yes	Yes	Yes	-	-	-	-	-	-	-	
TARIME	Bukwe	80	Nyasoro	3,050	2,192	9,898	2005	0	0	-	-	-	Yes	0	0	0	0	0	0	-	Yes	Yes	Yes	Yes	-	-	-	-	-	-	-	
TARIME	Koryo	81	Utegi	2,013	797	3,400	2005	16	0	-	0	-	1	16	0	0	0	0	0	-	Yes	Yes	Yes	Yes	-	Rive	-	-	-	-	-	
TARIME	Koryo	83	Mang'ore	1,061	1,078	1,114	2005	0	0	-	-	-	3	0	0	0	0	0	0	-	Yes	Yes	Yes	Yes	-	Rive	-	-	-	-	-	
TARIME	Roche	84	Osiri	1,105	1,920	3,203	2004	2	0	-	1	-	Yes	3	0	0	0	0	0	-	Yes	Yes	Yes	Yes	-	-	-	-	-	-	-	
TARIME	Kitembe	85	Nyamongo	3,012	3,040	7,528	2005	0	0	-	-	-	Yes	0	0	0	0	0	0	-	Dug well	Yes	Yes	Yes	Yes	-	Strea	-	-	-	-	-
TARIME	Kitembe	86	Sakana	3,528	3,337	2,640	2005	1	0	-	2	-	9	3	0	0	0	0	0	-	Yes	Yes	Yes	Yes	-	-	-	-	-	-	-	
TARIME	Kitembe	87	Kitembe	2,088	2,198	-	-	0	0	-	-	-	6	0	0	0	0	0	0	-	Yes	Yes	Yes	Yes	-	-	-	-	-	-	-	
TARIME	Roche	88	Roche	3,860	2,732	4,416	2004	1	0	-	1	-	Yes	Yes	0	0	Yes	0	0	-	Yes	Yes	Yes	Yes	-	Yes	-	-	-	-	-	
TARIME	Roche	89	Ng'ope	3,022	2,195	3,542	2004	0	0	-	0	-	4	0	0	0	0	0	0	-	Yes	Yes	Yes	Yes	-	Yes	-	-	-	-	-	
TARIME	Ikoma	90	Kogaja	3,816	2,594	2,629	2003	0	0	-	-	-	Yes	0	0	0	0	0	0	-	Yes	Yes	Yes	Yes	-	Yes	-	-	-	-	-	
TARIME	Ikoma	91	Nyamasanda	2,607	2,329	-	-	0	0	-	-	-	17	0	0	0	0	0	0	-	Yes	Yes	Yes	Yes	-	-	-	-	-	-	-	
TARIME	Ikoma	92	Ikoma	1,750	3,182	2,357	2004	0	0	-	0	-	3	0	0	0	0	0	0	-	stream	Yes	Yes	Yes	Yes	-	Yes	-	-	-	-	-
TARIME	Kisumwa	93	Kwibuse	2,215	2,506	1,720	2005	0	0	-	-	-	-	0	0	0	0	0	0	-	River	Yes	Yes	Yes	Yes	-	-	-	-	-	-	-
TARIME	Kisumwa	94	Kisumwa	1,988	1,912	2,716	2005	0	0	-	-	-	-	0	0	0	0	0	0	-	Kisumwa local dam	Yes	Yes	Yes	Yes	-	-	-	-	-	-	-
TARIME	Kisumwa	95	Nyanchabakenye	2,480	2,419	2,419	2005	0	0	-	-	-	Yes	0	0	0	0	0	0	-	Yes	Yes	Yes	Yes	-	-	-	-	-	-	-	
TARIME	Kisumwa	96	Marasibora	2,119	2,064	3,080	2005	2	0	-	0	2	-	2	2	0	0	0	0	-	Yes	Yes	Yes	Yes	-	-	-	-	-	-	-	
TARIME	Kisumwa	97	Nyanjagi	1,601	1,273	1,278	2004	0	0	-	-	-	Yes	0	0	0	0	0	0	-	Yes	Yes	Yes	Yes	-	Yes	-	Yes	-	-	-	
TARIME	Nyahongo	108	Lolwe	2,509	1,460	-	-	0	0	-	-	-	2	0	0	0	0	0	0	-	Yes	Yes	Yes	Yes	-	Yes	-	-	-	-	-	
TARIME	Nyahongo	110	Minigo	2,380	2,315	2,394	2002	0	0	-	-	-	-	0	0	0	0	Yes	0	-	Yes	Yes	Yes	Yes	-	Yes	-	-	-	-	-	
TARIME	Nyahongo	111	Nyabikonda	1,989	1,937	1,542	2002	0	0	-	-	-	4	0	0	0	0	0	0	-	Yes	Yes	Yes	Yes	-	-	-	-	-	-	-	
TARIME	Nyahongo	112	Nyankonge	1,980	1,472	4,710	2005	1	0	-	0	-	Yes	1	0	0	0	0	0	-	Yes	Yes	Yes	Yes	-	-	-	-	-	-	-	
TARIME	Nyahongo	113	Ormoche	2,506	3,271	3,343	2002	0	0	-	1	-	Yes	1	0	0	0	0	0	-	Yes	Yes	Yes	Yes	-	-	-	-	-	-	-	
TARIME	Nyahongo	114	Ryagati	2,001	1,961	2,035	2002	0	0	-	-	-	5	0	0	0	0	0	0	-	Yes	Yes	Yes	Yes	-	Rive	-	-	-	-	-	-

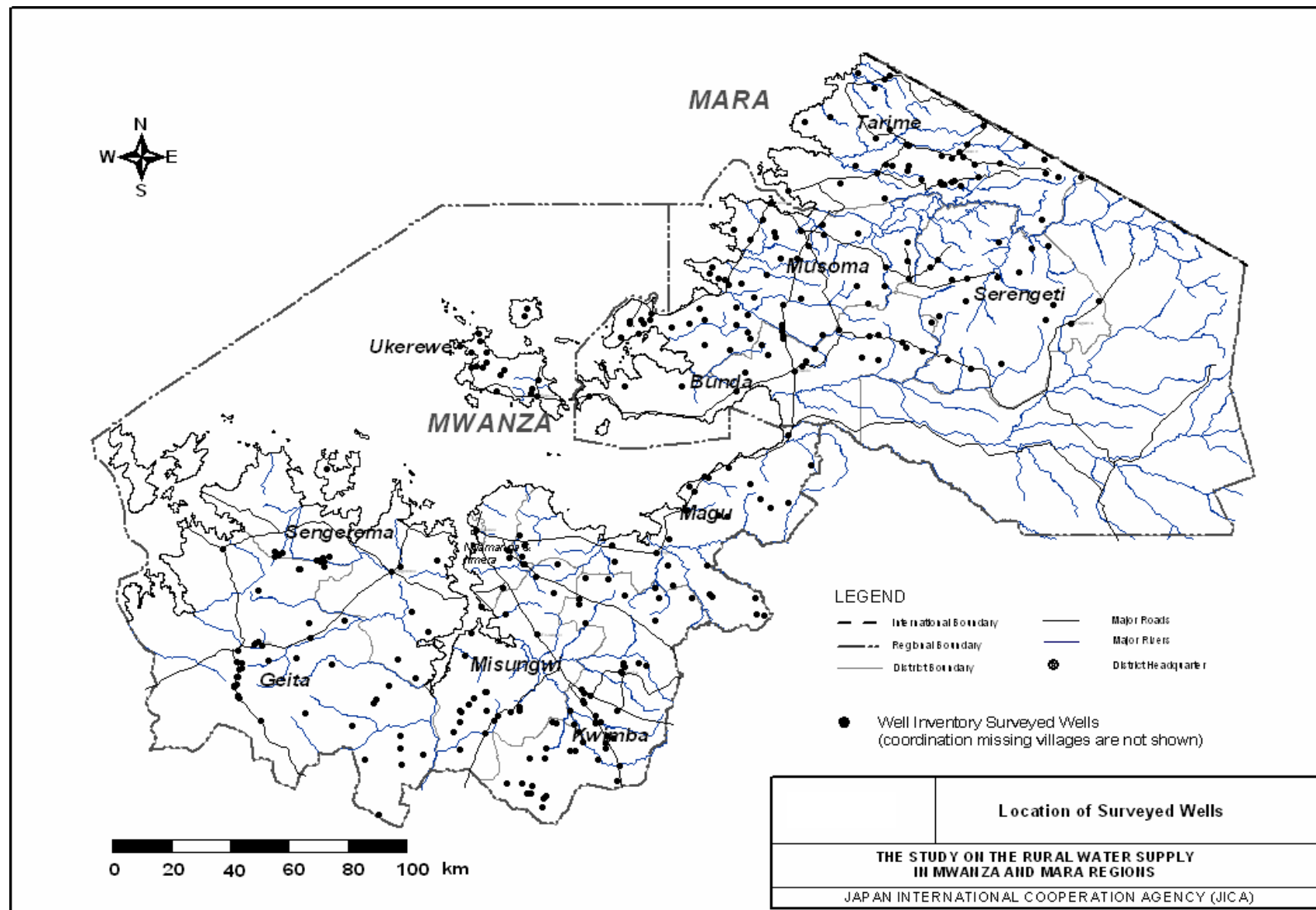
Well Inventory Survey (Water Sources in the Village 8/10)

LOCATION				POPULATION				EXISTING LIST										VILLAGE SURVEY																	
DISTRICT	Ward	No. by District	Village	A: Population in List (2004)	B: Population in Census (2002)	C: Population (from survey)	Population year	Existing Water Source					Surveyed Water Source					Water Use					Water Quality												
								Functional			Non Functional		Well		Spring	Dam	Lake water	Pump operation	Others	Drinking	Cooking	Washing	Bathing	Agriculture	Live stock	Others	Quality	Remarks							
								SW	BH	Others	SW	BH	Dug	Shallow borehole																					
TARIME	Bukura	116	Bwiri	3,213	2,001	1,958	2003/4	0	0	-	1	-	Yes	Yes	0	0	0	0	0	0	-	Yes	Yes	Yes	Yes	-	Yes	-	-	-	-	-			
TARIME	Bukura	117	Kirongwe	1,760	3,581	2,642	2004	0	0	-	2	-	Yes	2	0	0	0	0	Yes	0	-	River	Yes	Yes	Yes	Yes	-	-	-	-	-	-			
TARIME	Bukura	118	Nyambori	1,992	1,774	1,779	2003/4	0	0	-	3	-	Yes	Yes	0	0	0	0	0	0	-	Yes	Yes	Yes	Yes	-	Yes	-	-	-	-	-			
TARIME	Bukura	119	Thabache	3,319	1,568	1,683	2003/4	0	0	-	0	-	Yes	0	0	0	0	0	0	0	-	Dam	Yes	Yes	Yes	Yes	-	Yes	-	-	-	-	-		
TARIME	Nyamagaro	120	Kyangasaga	3,850	4,396	3,460	2002	0	0	-	-	-	-	0	0	0	0	Yes	0	-	-	Yes	Yes	Yes	Yes	-	-	-	-	-	-	-			
TARIME	Nyamagaro	122	Muharago	3,619	3,539	3,637	2004	0	0	-	-	-	5	0	0	0	0	Yes	0	-	-	Yes	Yes	Yes	Yes	-	Yes	-	-	-	-	-			
TARIME	Kirogo	127	Burete	1,413	1,758	-	-	0	0	-	-	-	Yes	0	0	0	0	Yes	0	-	-	Yes	Yes	Yes	Yes	-	Yes	-	-	-	-	-			
TARIME	Kirogo	128	Radienya	1,319	1,699	-	-	0	0	-	-	-	Yes	0	0	0	0	0	0	-	-	-	-	-	-	-	-	-	-	-	-	-	-		
TARIME	Kirogo	129	Masike	987	2,399	-	-	0	0	-	1	-	Yes	1	0	0	0	0	0	-	-	Yes	Yes	Yes	Yes	-	-	-	-	-	-	-	-		
TARIME	Kirogo	130	Randa	1,018	3,899	3,500	-	1	0	-	0	-	Yes	1	0	0	0	0	0	-	-	Yes	Yes	Yes	Yes	-	Yes	-	-	-	-	-	-		
TARIME	Kirogo	131	Bukama	1,350	3,713	3,946	2002	0	0	-	-	-	2	0	0	0	0	0	0	-	-	Yes	Yes	Yes	Yes	-	Strea	-	-	-	-	-	-		
TARIME	Mkoma	133	Raranya	3,309	3,373	3,650	2004/5	0	0	-	-	-	13	0	0	0	0	0	0	-	-	Yes	Yes	Yes	Yes	-	Yes	-	-	-	-	-	-		
TARIME	Nyamtinga	135	Busanga	2,141	3,219	3,222	2002	0	0	-	-	-	Yes	0	0	0	0	Yes	0	-	-	Yes	Yes	Yes	Yes	-	Yes	-	-	-	-	-	-		
TARIME	Nyamtinga	136	Manira	1,983	1,361	1,367	2004	0	0	-	-	-	8	Yes	0	0	0	0	0	-	-	Yes	Yes	Yes	Yes	-	strec	-	-	-	-	-	-		
TARIME	Nyamtinga	137	Nyarombo	2,808	1,894	1,860	2004	0	0	-	1	-	Yes	1	0	0	0	0	0	-	-	Yes	Yes	Yes	Yes	-	-	-	-	-	-	-	-		
TARIME	Nyamtinga	138	Rwangenyi	2,560	2,971	-	-	0	0	-	-	-	4	0	0	0	0	Yes	0	-	-	Yes	Yes	Yes	Yes	-	Yes	-	-	-	-	-	-		
TARIME	Rabour	143	Makongoro	4,717	3,410	3,513	2005	0	0	-	-	-	Yes	0	0	0	0	0	0	-	-	Kasino local dam	Yes	Yes	Yes	Yes	-	-	-	-	-	-	-	-	
TARIME	Rabour	144	Olyo	5,088	3,229	3,325	2002	1	1	-	1	0	-	2	1	0	0	0	Yes	-	-	Local dam	Yes	Yes	Yes	Yes	-	Yes	-	Yes	-	-	-	-	
TARIME	Nyathorogo	146	Omuga	5,045	2,274	-	-	0	0	-	-	-	Yes	0	0	0	0	0	0	-	-	Stream Nyongarly	Yes	Yes	Yes	Yes	-	-	-	-	-	-	-	-	
TARIME	Nyathorogo	148	Delli	986	1,504	1,428	2004	0	0	-	-	-	Yes	0	0	0	0	0	0	-	-	Charcoal dam Maraband	Yes	Yes	Yes	Yes	-	Yes	-	-	-	-	-	-	
TARIME	Nyathorogo	149	Ochuna	3,609	1,289	1,528	2004	0	0	-	1	-	Yes	0	1	0	0	0	0	-	-	Yes	Yes	Yes	Yes	-	Yes	-	-	-	-	-	-		
TARIME	Nyathorogo	150	Chereche	1,096	3,172	3,580	2005	0	0	-	-	-	Yes	0	0	0	0	0	0	-	-	Yes	Yes	Yes	Yes	-	Yes	-	-	-	-	-	-		
TARIME	Mirare	151	Ryagoro	3,065	2,682	2,885	2005	0	0	-	-	-	5	0	0	0	0	0	0	-	-	Yes	Yes	Yes	Yes	-	-	-	-	-	-	-	-		
TARIME	Mirare	152	Balongo	2,617	1,689	2,439	004/200	0	0	-	-	-	0	0	0	0	0	0	0	-	-	Yes	Yes	Yes	Yes	-	-	-	-	-	-	-	-		
TARIME	Mirare	154	Sudi	1,895	4,335	4,870	2004	0	0	-	-	-	6	0	0	0	0	0	0	-	-	Yes	Yes	Yes	Yes	-	strec	-	-	-	-	-	-	-	
TARIME	Goribe	155	Nyamei	2,450	1,632	2,021	2004	0	0	-	0	-	Yes	0	0	0	0	0	0	-	-	Yes	Yes	Yes	Yes	-	Yes	-	-	-	-	-	-		
TARIME	Goribe	156	Panyakoo	3,200	3,442	3,590	2005	0	0	-	-	-	Yes	0	0	0	0	0	0	-	-	Yes	Yes	Yes	Yes	-	-	-	-	-	-	-	-		
TARIME	Goribe	157	Tatwe	2,701	3,777	4,502	2005	0	0	-	1	-	27	1	0	0	0	0	0	-	-	Yes	Yes	Yes	Yes	-	-	-	-	-	-	-	-		
SERENGETI	Issenye	3	Nyamisingisi	1,528	1,446	1,382	2005	0	1	-	yes	0	0	yes	1	0	0	0	0	0	-	-	river	-	-	-	-	-	-	-	-	-	-	-	
SERENGETI	Natta	5	Kono	948	896	1,729	2005	0	0	-	yes	0	0	yes	0	0	0	0	0	0	-	-	Yes	Yes	Yes	Yes	-	-	-	-	-	-	-	-	
SERENGETI	Natta	6	Motukeri	1,883	1,784	2,500	-	0	2	-	yes	0	0	yes	0	2	0	0	0	0	-	-	river	yes	yes	yes	yes	-	-	-	-	-	-	-	-
SERENGETI	Natta	8	Makundusi	2,344	2,220	2,797	2004	0	4	-	yes	0	0	yes	0	4	0	0	0	0	-	-	river	yes	yes	yes	yes	-	-	-	-	-	-	-	-
SERENGETI	Kyambahi	13	Burunga	2,064	1,959	1,961	2005	0	0	-	18	0	0	18	0	0	0	yes	0	0	-	-	-	-	-	-	-	-	-	-	-	-	-	-	
SERENGETI	Kyambahi	15	Kyambahi	796	746	-	-	0	0	-	yes	0	0	yes	0	0	0	0	0	0	-	-	river	yes	yes	yes	yes	-	-	-	-	-	-	-	-
SERENGETI	Mugumu-Mjini	23	Matare	1,923	1,822	1,779	2003	3	0	-	0	0	0	3	0	0	0	0	0	-	-	stream	yes	yes	yes	yes	-	-	-	-	-	-	-	-	yes
SERENGETI	Nyambureli	27	Monuna	1,707	1,606	1,776	2005	0	0	-	4	0	0	4	0	0	0	0	0	0	-	-	river	-	-	-	-	-	-	-	-	-	-	-	-
SERENGETI	Nyambureli	28	Nyambureli	2,267	2,150	2,338	2005	2	0	-	yes	2	0	yes	4	0	0	0	0	0	-	-	river	yes	yes	yes	yes	-	-	-	-	-	-	-	-
SERENGETI	Ringwani	30	Kenyana	1,966	1,858	-	-	0	1	-	0	0	0	0	2	0	0	0	0	0	-	-	stream	yes	yes	yes	yes	-	-	-	-	-	-	-	yes
SERENGETI	Ringwani	34	Magange	1,586	1,504	-	-	0	0	-	yes	0	0	yes	0	0	0	0	0	0	-	-	Yes	Yes	Yes	Yes	-	-	-	-	-	-	-	-	
SERENGETI	Ringwani	35	Nyamilita	1,616	1,545	-	-	0	0	-	3	0	0	3	0	0	0	0	0	0	-	-	stream	yes	yes	yes	yes	-	-	-	-	-	-	-	-
SERENGETI	Busawe	37	Busawe	1,173	1,101	1,880	2004	0	0	-	yes	0	0	yes	0	0	yes	0	0	0	-	-	Yes	Yes	Yes	Yes	-	-	-	-	-	-	-	-	
SERENGETI	Busawe	38	Nyamakobiti	2,641	2,530	-	-	0	0	-	yes	0	0	yes	0	0	0	0	0	0	-	-	Yes	Yes	Yes	Yes	-	-	-	-	-	-	-	-	
SERENGETI	Kisaka	42	Nyiboko	2,651	2,492	3,538	2004	0	3	-	0	1	0	0	4	0	1	0	0	0	-	-	Yes	Yes	Yes	Yes	-	-	-	-	-	-	-	yes	
SERENGETI	Kenyamonta	46	Mesaga	2,293	2,169	-	-	2	0	-	yes	1	0	yes	3	0	0	0	0	0	-	-	Yes	Yes	Yes	Yes	-	-	-	-	-	-	-	-	
SERENGETI	Kisangura	50	Bisarara	1,985	1,872	-	-	3	0	-	0	1	0	0	4	0	yes	0	0	0	-	-	Yes	Yes	Yes	Yes	-	-	-	-	-	-	-	yes	
SERENGETI	Machochwe	54	Merenga	3,008	2,836	3,664	2002	1	0	-	yes	0	0	yes	1	0	0	0	0	0	-	-	Yes	Yes	Yes	Yes	-	-	-	-	-	-	-	-	yes

Well Inventory Survey (Water Sources in the Village 9/10)

LOCATION				POPULATION			EXISTING LIST										VILLAGE SURVEY													
DISTRICT	Ward	No. by District	Village	A. Population in List (2004)	B. Population in Census (2002)	C. Population (from survey)	Population year	Existing Water Source						Surveyed Water Source						Water Use						Water Quality		Remarks		
								Functional			Non Functional			Well			Spring	Dam	Lake water	Pump operation	Others	Drinking	Cooking	Washing	Bathing	Agriculture	Live stock		Others	Quality good
SW	BH	Others	SW	BH		Dug	Shallow	borehole	Others	Drinking	Cooking	Washing	Bathing	Agriculture	Live stock	Others												Quality good		
SERENGETI	Nyamatare	76	Nyamatare	2,190	2,084	2,243	2005	0	0	5	2	0	5	2	0	0	0	0	0	-	yes	yes	yes	yes	-	-	R	-	-	
SERENGETI	Nyamatare	78	Nyamatoke	2,509	2,379	4,005	-	2	0	15	0	0	15	2	0	0	0	0	0	stream	yes	yes	yes	yes	-	-	-	-	-	

Well Inventory Survey (Water Sources in the Village 10/10)







DISTRICT	Ward	No. by District	Village	Borehole	Well Specification																					
					Location of Well			Well Number	Surface Protection	Construction Year	Well Depth (m)	Drilling Diameter (cm)	Casing Diameter (cm)	Screen Diameter (cm)	Screen position (GL-m)	Water Struck Depth (GL-m)	Geology at screen depth	Geology at surface	Static water level (GL-m)	litre/min	Yield (litre/day)	Water Quality				
					Easting	Northing	GPS															pH	Temp. (C)	Ect (mS/m)	EC25 (mS/m)	ORP (mv)
BUNDA	Mugeta	17	Mugeta	S	635621	9784654	1294	-	-	2004	6	17	7	-	-	-	-	3.52	2.5	3600	7.4	26.2	1698	-	104	
BUNDA	Mugeta	18	Sanzate	S	626050	9789162	1488	-	Concrete, Φ 3.2	1993	6	120	-	-	-	-	-	0.4	1.7	2500	6.95	34.1	285	-	116	
BUNDA	Mugeta	19	Nyangaranga	S	634384	9786496	1287	-	Concrete	1992	6	120	10	-	-	-	-	-	-	-	-	-	-	-	-	
BUNDA	Mugeta	20	Kyandenge	S	640999	9783285	1238	-	Concrete, Φ 3.2	1998	6	17	7	-	-	-	-	-	-	-	-	-	-	-	-	
BUNDA	Mihingo	23	Manchimweru	S	644080	9793256	1331	-	Concrete	1992	6	120	10	-	-	-	0.5	5.6	8000	6.82	23.7	730	-	133		
BUNDA	Sazira	26	Ligamba A	S	601379	9779823	1401	-	-	-	8	-	-	-	-	-	-	-	-	-	-	-	-	-	-	
BUNDA	Sazira	27	Misisi	S	599916	9779482	1382	-	-	-	6	-	-	-	-	-	-	-	-	-	-	7.57	26.2	1022	-	148
BUNDA	Wariku	30	Kangetulya	S	586338	9785556	1263	-	Concrete	1986	6	120	-	-	-	-	-	27.8	40,000	7.56	28.5	965	-	17		
BUNDA	Kabasa	42	Kabasa	S	588352	9782047	1253	-	Concrete, Φ 3.2	1990	6	120	8	-	-	-	2.2	1.4	2000	7.46	35.9	1129	-	35		
BUNDA	Hunyari	46	Hunyari	S	620361	9781231	1226	-	Concrete, Φ 2.83	2000	6	17	7	-	-	-	-	-	-	-	-	-	-	-	-	
BUNDA	Hunyari	48	Mariwanda	S	626215	9780417	1227	-	-	1992	6	120	10	-	-	-	-	-	-	-	-	-	-	-	-	
BUNDA	Namhula	67	Kalukekele	S	559042	9771386	1165	-	-	-	6	-	-	-	-	-	-	-	-	-	-	-	-	-	-	
BUNDA	Igundu	85	Igundu	S	539755	9771524	1170	-	-	-	6	-	-	-	-	-	-	-	-	-	-	6.22	26.2	103.2	-	110
BUNDA	Kisorya	90	Masahunga	S	527466	9767863	1147	-	-	-	6	-	-	-	-	-	0.8	6.9	10,000	6.91	27.9	118.5	-	129		
MUSOMA	Buswahili	1	Wegero	S	635850	9821197	1178	-	Concrete 3.0m dia	1999	10	17	7	-	-	-	8.4	-	-	-	-	6.92	27.4	4	-	16
MUSOMA	Buswahili	2	Baranga	S	635989	9814719	1241	-	Concrete 3.1m dia	1997	6	17	7	-	-	-	1.5	4.9	7000	6.9	25.7	1186	-	75		
MUSOMA	Nyamimang	5	Kitalamanka	S	628544	9812413	1224	-	Concrete 3.1m dia	1991	6	120	-	-	-	-	1.56	6.3	8000	6.97	25.2	520	-	-	-	
MUSOMA	Nyamimang	6	Sirorisimba	S	636535	9808680	1310	-	Concrete 3.1m dia	1997	6	17	7	-	-	-	1.43	0.2	358.333	6.98	32	69	-	45		
MUSOMA	Bwiregi	8	Ryamisimba	S	619285	9824285	1177	-	-	-	6	-	-	-	-	-	-	-	-	-	-	7.21	23.8	72.6	-	120
MUSOMA	Buhemba	14	Mirwa	S	628219	9805840	1277	-	Concrete	1999	8	120	-	-	-	-	-	1.4	2000	7.22	25.7	543	-	117		
MUSOMA	Buhemba	15	Magunga	S	622380	9798823	1399	-	-	-	6	120	10	-	-	-	-	-	-	-	-	-	-	-	-	
MUSOMA	Buhemba	17	Kinyariri	D	618694	9805895	1451	-	-	1997	47	-	-	-	-	-	-	-	-	-	-	-	-	-	-	
MUSOMA	Butuguri	20	Busegwe	S	618334	9247492	1508	-	-	-	6	-	-	-	-	-	-	-	-	-	-	-	-	-	-	
MUSOMA	Bukabwa	23	Bukabwa	S	607559	9823770	1196	-	-	-	8	-	-	-	-	-	-	-	-	-	-	7.04	22.6	122.6	-	144
MUSOMA	Bukabwa	24	Mmazami	S	602166	9819897	1251	-	-	1998	6	120	17	-	-	-	1.7	2400	6.82	25.8	600	-	-	-	21	
MUSOMA	Bukabwa	25	Kirumi	S	607200	9027075	1197	-	-	-	6	-	-	-	-	-	-	-	-	-	-	7.5	21.9	86.3	-	136
MUSOMA	Kiriba	26	Mwiringo	S	571666	9808467	1197	-	concrete 3.93m	-	8	120	-	-	-	-	0.0	42	7.66	33.7	616	-	41			
MUSOMA	Kiriba	27	Bwaikwitururu	S	568381	9810335	-	-	concrete 4.1m dia	1999	6	120	-	-	-	-	0.8	2.8	4000	7	27.7	252	-	74		
MUSOMA	Suguti	31	Chirowe	S	577549	9798517	1179	-	-	-	6	-	-	-	-	-	-	-	-	-	-	6.67	27.5	313	-	118
MUSOMA	Suguti	32	Wanyere	S	581323	9796097	1175	-	Concrete 3.1m dia	1980	8	-	-	-	-	-	0.0	20	-	-	-	-	-	-	-	
MUSOMA	Nyambono	33	Bugoji	S	581689	9790201	1307	-	Concrete 3.54mdia	2005	6	120	10	-	-	-	0.6	2.8	4000	6.16	24.6	272	-	177		
MUSOMA	Nyambono	35	Saragana	S	577681	9792756	1259	285/2000	Concrete 5.57m dia	1999	6	-	150	-	-	-	1.99	6.9	10,000	6.52	24.9	326	-	159		
MUSOMA	Nyambono	36	Kaburabura	S	582396	9787658	1263	-	-	-	10	-	-	-	-	-	-	-	-	-	-	7.26	24.4	28.1	-	148
MUSOMA	Kukirango	42	Mwanzaburiga	S	589645	9801842	1325	-	-	1999	6	120	-	-	-	-	-	-	-	-	-	-	-	-	-	
MUSOMA	Masaba	45	Kwigutu	S	607051	9788946	1307	-	Concrete 3.1m	1999	6	120	10	-	-	-	0.3	417	6.99	23.3	-	-	-	-	76	
MUSOMA	Masaba	46	Nyasirori	S	604581	9784280	1366	-	43	-	8	120	10	-	-	-	-	-	-	-	-	6.97	23.6	374	-	203
MUSOMA	Kinyariri	47	Nyamikoma	S	593789	9799454	1255	-	Concrete, 43	1998	6	120	10	-	-	-	-	-	-	-	-	-	-	-	-	
MUSOMA	Nyakanga	50	Nyakanga	S	599843	9824897	1204	-	Concrete 3.0m dia	1999	8	-	-	-	-	-	-	-	-	-	-	-	-	-	-	
MUSOMA	Nyakanga	53	Bisumwa	S	591005	9822793	1263	-	Concrete	2004	6	-	-	-	-	-	0.7	1.0	1,500	6.7	27.9	193	-	224		
MUSOMA	Nyankanga	54	Nyabekwabi	S	590423	9824641	1247	-	-	-	6	-	-	-	-	-	-	-	-	-	-	7.24	23	212	-	162
MUSOMA	Buruma	55	Isaba	S	598544	9815467	1308	-	Concrete 3.1m dia	1997	8	120	10	-	-	-	0.1	84	6.9	25.7	144	-	132			
MUSOMA	Buruma	56	Songora	S	592548	9815630	1243	-	-	-	6	-	-	-	-	-	-	-	-	-	-	-	-	-	-	
MUSOMA	Buruma	58	Ryamugabo	S	588023	9809778	-	-	-	-	8	-	-	-	-	-	-	-	-	-	-	6.75	26.4	171.2	-	59
MUSOMA	Bugwema	60	Masinono	S	566866	9785592	-	-	-	-	8	-	-	-	-	-	-	-	-	-	-	7.41	30.5	80.8	-	61
MUSOMA	Bugwema	61	Muhoji	S	575506	9784008	1205	-	-	-	8	-	-	-	-	-	-	-	-	-	-	6.25	27.5	24.4	-	100
MUSOMA	Murangi	64	Mabuimeratu	S	561539	9793080	-	-	-	-	8	-	-	-	-	-	-	-	-	-	-	7.03	27	5306	-	143
MUSOMA	Murangi	65	Musanja	S	555592	9791511	1186	-	-	-	8	-	-	-	-	-	-	-	-	-	-	2.2	31.2	212	-	43
MUSOMA	Bukima	67	Butata	S	548717	9796633	1149	-	Concrete 4.0m dia	1998	6.7	120	10	-	-	-	0.1	84	6.11	23.4	139.4	-	108			
MUSOMA	Bukima	68	Buanga	S	548263	9794246	1170	-	-	-	6	-	-	-	-	-	-	-	-	-	-	6.89	27.3	145	-	142
MUSOMA	Bukima	69	Rusofi	S	546016	9792875	1171	-	-	-	6	-	-	-	-	-	-	-	-	-	-	6.04	27.8	79.3	-	125
MUSOMA	Bukima	70	Kwikerege	S	545084	9794493	1207	-	-	-	6	-	-	-	-	-	-	-	-	-	-	6.06	26.4	16.25	-	47
MUSOMA	Bukumi	72	Bukumi	S	538261	9788061	-	-	-	-	6	-	-	-	-	-	-	-	-	-	-	6.22	25.1	107.3	-	147
MUSOMA	Tegeruka	74	Maneke	S	575002	9806542	1207	-	Concrete 3.8m dia	1994	6	120	10	-	-	-	1.4	2000	7.45	27.4	155.3	-	64			
MUSOMA	Tegeruka	75	Tegeruka	S	579552	9806778	1199	-	Concrete 3.37m dia	1997	6	-	-	-	-	-	0.0	2	10.24	29.5	70.5	-	133			

Well Inventory Survey (Well Inventory 3/5)





DISTRICT	Ward	No. by District	Village	Borehole	Well Specification																					
					Location of Well			Well Number	Surface Protection	Construction Year	Well Depth (m)	Drilling Diameter (cm)	Casing Diameter (cm)	Screen Diameter (cm)	Screen position (GL-position) (m)	Water Struck Depth (GL-m)	Geology at screen depth	Geology at surface	Static water level (GL-m)	litre/min	Yield (liter/day)	Water Quality				
					Easting	Northing	GPS															pH	Temp. (C)	ECt (mS/m)	EC25 (mS/m)	ORP (mv)
SERENGETI	Kenyamont	46	Mesaga	S	646253	9815052	1259	13/4-67	Concrete 2.5	#####	8.5	120	10	-	-	-	-	-	6.97	29	1111	-	151			
SERENGETI	Kisangura	50	Bisarara	S	701095	9800795	1654	-	Concrete 3.0m	1996	5	120	10	-	-	-	-	-	6.6	24.7	461	-	93			
SERENGETI	Machochwe	54	Merenga	S	683772	9819739	1344	-	-	1997	18	-	-	-	-	-	-	-	6.98	27.1	933	-	93			
SERENGETI	Kibanachaba	66	Nyansura	S	678253	9819104	1270	-	-	-	7	-	-	-	-	-	-	-	7.06	33.6	468	-	104			
SERENGETI	Kibanachaba	67	Kebancha	D	673821	9810618	1509	14/1-78	Concrete 3.0	1998	30	150&170	-	-	-	-	-	-	6.03	26	850	130	-			
SERENGETI	Nyamatare	78	Nyamatoke	S	655863	9800994	1436	-	-	20/11/1998	7	-	-	-	-	-	-	-	-	-	-	-	-			
SERENGETI	Kyambahi	13	Burunga institution	E	683185	9794283	1604	-	162cm	2004	30m from the g	-	-	-	-	-	-	-	0.5	709	6.82	24.1	1.47	-	218	
SERENGETI		32	Masinki	NA	651150	9808141	1404	-	-	-	-	-	-	-	-	-	-	-	-	-	-	-	-	-		
SERENGETI		31	Ring'wani	D	656305	9808783	1389	-	3.34M	1999	72	-	-	-	-	-	-	-	30	-	-	-	-	-		
TARIME					612762	9790990	1330	79/71	-	1971	105.5	-	-	-	-	-	-	-	5.4	2.6	3700	-	-	-		
BUNDA					643633	9812526	1298	113/71	-	1971	195.3	-	-	-	-	-	-	-	1.6	1.9	2700	-	-	-		
KWIMBA					539365	9674734		7/54	-	1954	67.7	-	-	-	-	-	-	-	5.6	94.7	136320	-	-	-		
KWIMBA					539724	9674341		141/74	-	1974	64.6	-	-	-	-	-	-	-	5.6	93.3	134400	-	-	-		
KWIMBA					539120	9675763		113/84	-	1984	56.7	-	-	-	-	-	-	-	14	267.8	385680	-	-	-		

Well Inventory Survey (Well Inventory 5/5)