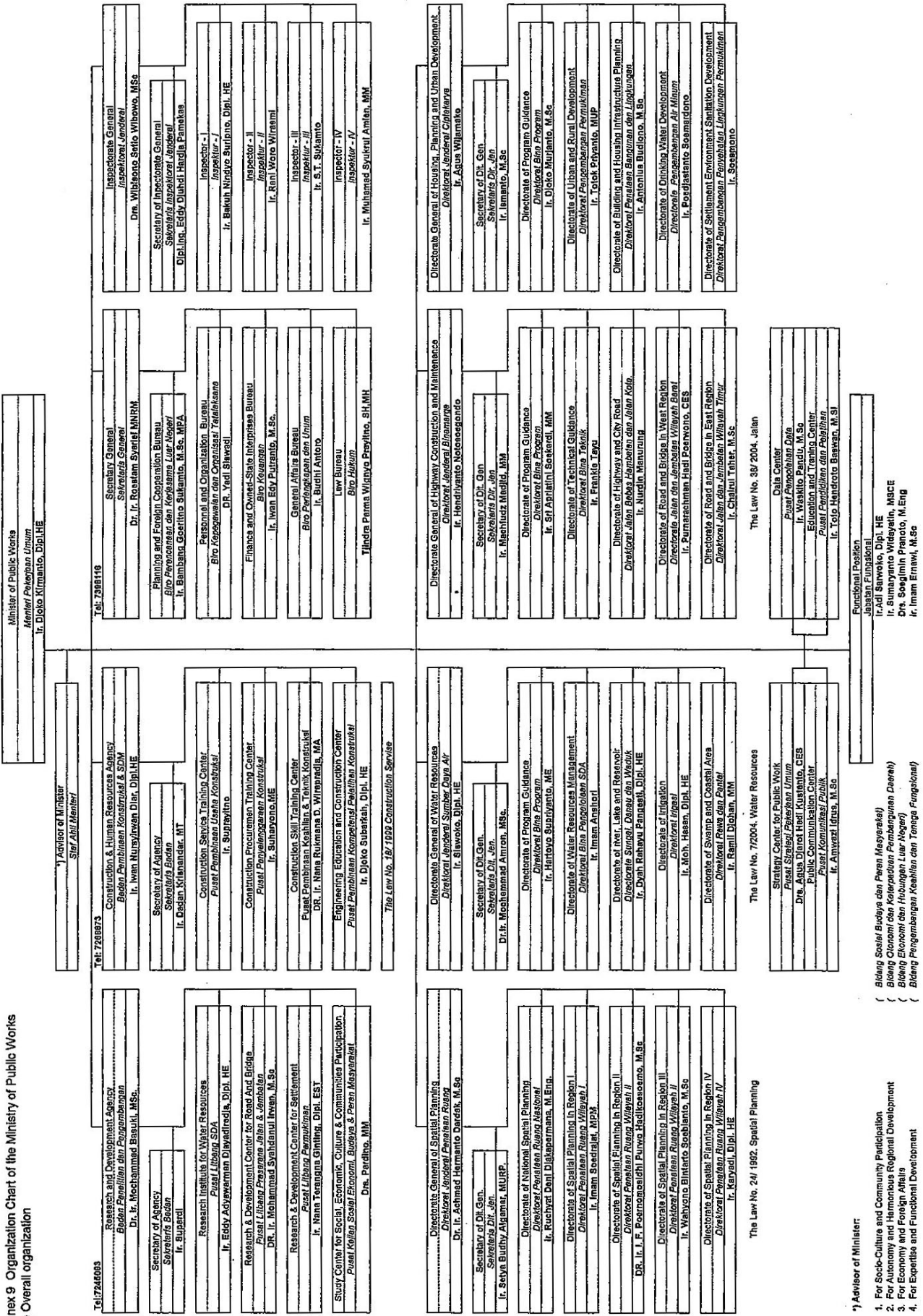


Annex 9 Organization Chart of the Ministry of Public Works
(1) Overall organization



*) Advisor of Minister:
1. For Socio-Culture and Community Participation
2. For Economy and Foreign Affairs
3. For Expertise and Functional Development
4. For Socio-Culture and Community Participation
(Bidang Sosial Budaya dan Partisipasi Masyarakat)
(Bidang Ekonomi dan Keterkaitan Pembangunan Daerah)
(Bidang Ekonomi dan Hubungan Luar Negeri)
(Bidang Peningkatan Keahlian dan Tenaga Fungsional)

Annex 9 Organization Chart of the Ministry of Public Works

(3) Organization Chart of STC (Sabot Training Center)

