

付属資料

1. 対象州での初中等教育における海外援助
2. Minutes of Meeting
3. PCM ワークショップ問題分析・目的分析系図
4. 第一次事前評価調査対処方針
5. 第二次事前評価調査対処方針

1. 対象州での初中等教育における海外援助

対象州での初中等教育における海外援助

対象州内では JICA 以外にも他のドナーが初中等教育分野での援助活動を実施している。
別表のとおり、以下の項目に別けて英文でまとめた。

分類項目

- (1) ドナー名
- (2) プログラム名
- (3) 期間
- (4) 金額
- (5) 援助形態
- (6) プログラム目標
- (7) 対象地域
- (8) 関連機関

E JAVA
EDUC PROGS DONOR MATRIX as of 2005.07

Donor	Programme title	Start	End	Commitments	Type of assistance	Programme objectives	Geographical location	Executing agency
Australia - Indonesia Development Cooperation Program (AIDCP - AusAID)	Indonesia-Australia Partnership in Basic Education (IAPBE)	2004	2007	A\$7.9 mill	Grant	Aims to develop institutional expertise for education management focusing on planning and delivering basic education activities that cover the full nine years of schooling. The Partnership will support this process by trialling an alternative model working in primary and junior secondary schools for both secular and madrasah education system.	Districts of Gresik, Jombang & Jember, E. Java	IDP Education International, MONE & MORA, AusAID
Australia - Indonesia Development Cooperation Program (AIDCP - AusAID)	Creating Learning Communities for Children	2004	2009	A\$4.2 mill	Grant	The Project aim is to improve the quality of teaching and learning by improving school based management and involving communities in the school improvement cycle. All schools will be covered including madrasah.	Banten, W. Java, E. Java, NTB, NTT, S. Sulawesi, Papua	UNICEF, UNESCO, MONE & MORA
	Indonesia-Australia Specialized Training Project (IAsTP III) Phase III	13-Apr-04	2009	A\$62,500,000	Grants	2.4 The goal of the Project is to contribute to promoting good governance, through improved economic management, governance practices and delivery of basic social services, consistent with Indonesia's development needs as reflected in the Indonesia Country Program Strategy. The purpose of the Project is to develop appropriate knowledge, skills and attitudes using efficient and effective specialised training programs that meet the priorities of the government and the needs of selected agencies, particularly at the Provincial and District level.	East Java, South Sulawesi, Southeast Sulawesi, East Nusa Tenggara, West Nusa Tenggara, Papua, Maluku and North Maluku	Hassal & Associates International, Setneg, AusAID
	Islamic Schools English Language project	2004	2007	A\$3.3 mill	Grant	This project aims to enhance the capacity of Islamic junior secondary schools to provide appropriate, contemporary English language education. This is to be achieved through the progressive placement of up to 20 volunteer English language teacher/trainers in selected Islamic junior secondary schools in East Java. Their primary role will be to reinforce the capacity of Indonesian teachers to teach English as a foreign language.	East Java	AVI International, State Secretariat, AusAID
Australia - Indonesia Partnership for Reconstruction and Development (AIPRD)	Austrian Development Scholarships (ADS)	31-Jul-03	3 years (for phase II with the option to extend for a further 2 years)	A\$14.2m	Grants	The goal of the Indonesia ADS Off-Shore Management Program - Phase II is to assist in reducing poverty and achieving sustainable development through contributing to human resource development in Indonesia. The purpose of this Program is, through the provision of long-term academic scholarships, to assist Indonesians to acquire relevant knowledge, skills and qualifications so that they can facilitate capacity building in priority development areas consistent with Australia's Indonesia Country Program Strategy agreed between the Australian and Indonesian governments.	East Java, South Sulawesi, Southeast Sulawesi, East Nusa Tenggara, West Nusa Tenggara, Papua, Maluku and North Maluku	IDP Education International, State Secretariat (Seineg)
GTZ	Science Education Quality Improvement Project (SEQIP) 2	2003	2005	€ 13 million	Grant	This approach encourages children to formulate their own ideas and perceptions and to integrate practical activities into learning. The project improves the quality of science education in primary schools by enhancing the teachers' methods of teaching through training and a comprehensive support system. The five main aspects are: (i) Improvement of teacher in-service and pre-service training; (ii) Development, distribution, and maintenance of teaching materials; (iii) Development of handbooks and textbooks; (iv) Development of a corresponding approach for schools not included in the school cluster system (Single School Approach); (v) Education quality management at the district level.	17 Provinces: Jakarta, Central Java, East Java, South Kalimantan, West Nusa Tenggara, South Sulawesi, Papua, Jambi, South Sumatra, Bangka Belitung, Lampung, Banten, West Kalimantan,	GTZI MoNE/KIWI
NZAI	Creating Learning Communities for Children (CLCC)	2002	2005	3,000,000	Grant	The Project aim is to improve the quality of teaching and learning by improving school based management and involving communities in the school improvement cycle. All schools will be covered including madrasah.	C. Java, E. Java, S. Sulawesi, NTB, NTT, Papua	UNICEF, UNESCO, MONE & MORA
UNICEF/UNESCO	Creating Learning Communities for Children (CLCC)	1999	2006	\$200,000 per agency plus contributions from NZAID	Grant	The Project aim is to improve the quality of teaching and learning by improving school based management and involving communities in the school improvement cycle. All schools will be covered including madrasah.	Magelang (C. Java), Mojokerto (E. Java), Gowa (S. Sulawesi)	UNICEF, UNESCO, MONE & MORA
USAID	Managing Basic Education (MBE)	2003	2007	\$11 mill	Grant	Education management at district level, school based management, improved quality of teaching and learning	Easi and Central Java (20 districts)	USAID, RTI International, Coordinating Ministry of People's Welfare (KESRA), MONE, MORA

E JAVA
EDUC PROGS DONOR MATRIX as of 2005.07

Donor	Programme title	Start	End	Commitments	Type of assistance	Programme objectives	Geographical location	Executing agency
	Decentralised Basic Education 1: More effective decentralised management and governance of district education offices and schools	2005	2010	\$30 mill	Grant	Decentralized education management, planning, budgeting capacity building, with increased transparency and participation, school based management	100 districts, selected 25 at a time on a 2 year rolling basis (Java, So. Sulawesi, North Sumatra)	USAID, RTI International, World Education, Pusat Pengembangan Agribisnis, KESRA, MONE, MORA
	Decentralized Basic Education (DBE) 2: Improved quality of teaching and learning	2005	2010	\$60 mill	Grant	In-service teacher training (PAKEM), materials development, ICT, pilot kindergartens, capacity building, professional development for educators (teachers, principals, supervisors, school committee members, etc.)	100 districts, selected 25 at a time on a 2 year rolling basis (Java, So. Sulawesi, North Sumatra)	USAID, (EDC) Educational Development Cen., Academy for International Development (AED), RTI International, Florida State Univ., Univ. Mass., Univ. Pittsburgh, KESRA, MONE, MORA
	Decentralized Basic Education (DBE) 3: Increased educational relevance and workforce skills for youth	2005	2010	\$20-25 mill	Grant	Lifeskills, pre-vocational training, work in CLCs and junior secondary schools, local content curriculum development, ICT, smooth transition for youth from school to work	100 districts, selected 25 at a time on a 2 year rolling basis (Java, S Sulawesi, North Sumatra)	USAID, KESRA, MONE, MORA, others to be determined

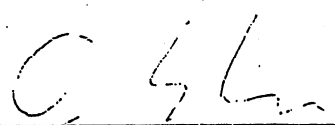
2. Minutes of Meeting

MINUTES OF MEETING
BETWEEN
JAPAN INTERNATIONAL COOPERATION AGENCY
AND
AUTHORITIES CONCERNED OF
THE GOVERNMENT OF THE REPUBLIC OF INDONESIA
ON
THE TECHNICAL COOPERATION FOR
STRENGTHENING IN-SERVICE TEACHER TRAINING OF
MATHEMATICS AND SCIENCE EDUCATION AT JUNIOR SECONDARY LEVEL

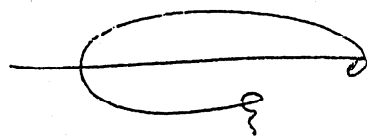
The Preparatory Study Team (hereinafter referred to as "the Team") of Japan International Cooperation Agency (hereinafter referred to as "JICA") visited the Republic of Indonesia from August 24 to September 1, 2005 and had a series of discussions with Indonesia authorities concerned on desirable measures to be taken by both Indonesian and Japanese Governments for successful implementation of the program for Strengthening In-service Teacher Training of Mathematics and Science Education at Junior Secondary Level (hereinafter referred to as "the Program").

As a result of the discussions, the Team and the undersigned government authorities concerned agreed to recommend to their Governments the matters referred to in the document attached hereto.


Jakarta, September 1, 2005



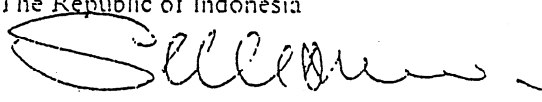
Jun Sakuma
Leader
Preparatory Study Team
Japan International Cooperation Agency
Japan



Fasli Jalal
Director General
Directorate General for Quality Improvement
of Teachers and Education Personnel
Ministry of National Education
The Republic of Indonesia



Satryo Soemantri Brodjonegoro
Director General
Directorate General for Higher Education
Ministry of National Education
The Republic of Indonesia



Suyanto
Director General
Directorate General for Management of
Primary and Secondary Education
Ministry of National Education
The Republic of Indonesia

I. BACKGROUND OF THE PROGRAM

The Ministry of National Education (MONE) and JICA have been executing Technical Cooperation Project for Development of Science and Mathematics Teaching for Primary and Secondary Education in Indonesia (IMSTEP) since 1998. IMSTEP is a project for teacher professional development through both pre-service and in-service teacher training. The recipient institutions are the faculties of mathematics and science (FMIPA) and the faculty of mathematics and science education (FPMIPA) in the Indonesia University of Education (UPI), the National University of Yogyakarta (UNY), and the National University of Malang (UM).

Those universities are working with mathematics and science teachers in two SMP (three SMP with UPI) and two SMA in each project site, through Lesson Study¹. Both MONE and JICA highly recognize certain impacts of such collaborative activities on professional development of teachers in terms of subject knowledge and skills in teaching, as well as cognitive and affective growth in students. Since IMSTEP will be completed at the end of September 2005, the Government of Indonesia officially requested the Government of Japan to implement a succeeding program.

II. OUTLINE OF THE PROGRAM

Both sides agreed upon the program concept as follows.

1. Title of the Program

The Program shall be referred to "Strengthening In-service Teacher Training of Mathematics and Science Education at Junior Secondary Level".

2. Overall Goal

- (1) The model of in-service teacher training (MGMP) applying Lesson Study is disseminated in the target provinces as a form of continuing teacher professional development.
- (2) The level of student learning ability in mathematics and science is improved in the target districts.

3. Program Purpose

The model of MGMP activities applying Lesson Study for quality improvement of mathematics and science teachers is developed in the target districts. This Program will address teachers of Junior Secondary Schools (public and private SMP, public MTS and well-established private MTS).

¹ Lesson Study is an activity for teacher professional development. Lesson Study enables teachers to share experiences in lessons with their colleagues by opening the lessons to them. Lesson Study is a cyclical teacher training, where a teacher (1) plans a lesson through academic exploration of topics and materials; (2) conducts a lesson based on prepared lesson plans and materials, inviting their colleagues for observation; and (3) reflects on the lesson through an exchange of comments and ensuing discussions by observers.

4. Outputs

- (1) Education officers in the central government and target districts recognize the effectiveness of the MGMP activities and take necessary financial and administrative measures to sustain them.
- (2) Effective MGMP activities are regularly conducted in the target districts.
 - (2-1) MGMP facilitators are trained in the target districts.
 - (2-2) Principals of the target schools recognize the effectiveness of the MGMP activities and take necessary measures to sustain them.
 - (2-3) Mathematics and Science teachers improve the practical teaching competency through the MGMP activities applying Lesson Study.
- (3) The monitoring and evaluation mechanism of the MGMP activities is developed.

5. Activities

- 1-1 Hold an inception and socialization meeting
- 1-2 Hold MGMP forums for dissemination to neighboring districts
- 1-3 Develop dissemination strategies of MGMP activities applying Lesson Study

- 2-1 Analyze the situation of current MGMP activities
- 2-2 Design a detailed plan of the MGMP activities
- 2-3 Conduct facilitator trainings
- 2-4 Conduct school management trainings for principals
- 2-5 Practice Lesson Study in the MGMP activities
- 2-6 Practice Entire-school Lesson Studyⁱⁱ in some schools on a pilot basis
- 2-7 Compile the experiences into guidelines and materials of the MGMP activities

- 3-1 Develop monitoring and evaluation methods and tools of the MGMP activities
- 3-2 Conduct monitoring and evaluation on the MGMP activities
- 3-3 Hold evaluation workshops
- 3-4 Compile the experiences of monitoring and evaluation into guidelines.

ⁱⁱ Entire-school Lesson Study: in this activity, the principal initiates Lesson Study as a vehicle to enhance learning of teachers from each other within schools, and to let teachers invite their colleagues to observe their lessons, irrespective of their subjects. This enables teachers to pay attention to how students learn, not only specified subject matters. Furthermore, this activity strengthens the collegiality among the teachers throughout the schools, by sharing insights and experiences on students' learning and teaching practices.

6. Inputs

<Japanese side>

(1) Experts

- Chief Advisor
- Lesson Study
- School Management
- Mathematics Education
- Science Education
- Educational Planning and Evaluation

(2) Counterpart training in Japan:

Approximately 10 people per annum

(3) Equipment:

Audio visual equipment

(4) Necessary expenses

<Indonesian side>

- Central Government:

Counterpart personnel

Counterpart budget (for workshop, transportation, etc.)

Office space for Japanese experts (in MONE)

Expenses of University resource persons (DG of Higher Education)

- Universities (UPI, UNY and UM):

Resource persons from each university

Office space for Japanese experts in each university

- District Government (to be selected)

Counterpart personnel

Office Space in each target district DINAS

Expenses of the MGMP activities (for workshop, transportation, etc.)

【Program Design Matrix (PDM)】

Both sides agreed upon the Draft of PDM in Annex 1.

【Plan of Operation (PO)】

Both sides agreed upon the Draft of PO in Annex 2-1.

h

Sum -
a

III. DURATION OF THE PROGRAM

The expected duration of the Program will be two years and six months, May 2006-October 2008.

IV. SELECTION CRITERIA OF THE TARGET DISTRICTS

The Program will cover the provinces of East Jawa, Yogyakarta and West Jawa. Target districts will be selected later on according to the following criteria. One target district from each province will be selected later on.

- (1) Strong commitment of district governments (submission of an official letter signed by Bupati)
- (2) Current districts' initiative to (both technically and financially) support teacher training activities (MGMP and others)
- (3) District education plan including quality improvement strategies of teachers
- (4) Sufficient ratio of education budget to APBD (District budget), excluding salary
- (5) Medium size (number of schools and sub-districts) of district for effective implementation of MGMP activities
- (6) Geographical conditions conducive to disseminate the results of training and accessibility from the Universities
- (7) Priority on rural districts

V. SELECTION PROCEDURES OF THE TARGET DISTRICTS

Target districts will be selected by October 2005 through the following steps.

- (1) DGQITEP will send official letters to the target provincial DINAS and the Universities to discuss preparation of a list of candidate districts based upon the above mentioned criteria.
- (2) Both the provincial DINAS and the Universities will select candidate districts through assessing the geographical accessibility.
- (3) The provincial DINAS will inform the candidate districts about commitment letters to provincial DINAS and encourage them to submit commitment letters to the provincial DINAS.
- (4) The provincial DINAS will report the result to DGQITEP.
- (5) DGQITEP, the provincial DINAS, the Universities or UICIA will discuss and decide a target district in each province.

VI. ADMINISTRATION OF THE PROJECT

1. Joint Coordinating Committee (JCC)

A Joint Coordinating Committee will be organized at the national level and meet every six months (and if need be) to supervise the Annual Work Plan and review overall progress of the Program. The members will be as follows.

F

4

Elu -

R

R

- Director General for Quality Improvement of Teachers and Education Personnel
- Director General for Higher Education
- Director General for Management of Primary and Secondary Education
- Director General of Islamic Institutions, Ministry of Religious Affairs (MORA), Directorate General for Islamic Institutions
- Representative from BAPPENAS
- Head of the Education Office of the three provinces
- Rectors of the three universities
- Representative of JICA Indonesia office
- JICA Experts

2. Implementation Committee

This committee will be organized at the district level in each district and meet monthly (and if need be) to formulate the Annual Work Plan, to coordinate the activities and monitor the progress. The members will be nominated from both Indonesian and Japanese sides by the time of signing R/D and comprise of the following:

- Head of the district education office
- Head of junior secondary education division of the district educational office
- Representative of the partner university
- Representative of provincial education office
- Representative of district MORA office
- Representative of Regional Development Planning Bureau (BAPPEDA)
- Representative of MGMP
- Representative of principals association
- JICA Experts

VI. SCHEDULE FOR PREPARATION OF THE PROJECT

R/D will be prepared by both Indonesian and Japanese sides, and is expected to be signed between MOE and JICA Indonesia office in October 2005 after selection of the target districts.

VI. LIST OF ANNEX

Annex 1	Draft of Program Design Matrix (PDM)
Annex2-1	Draft of Plan of Operation
Annex2-2	Description of the Program Activities
Annex3	Program Image
Annex4	Tentative Estimate of Expenses and Cost-sharing Plan
Annex5	List of Participants

F

Shu -
Q *Q*

Draft of Program Design Matrix (PDM)

Program Summary	Objectively Verifiable Indicators
<p><u>Overall Goal</u></p> <p>1. The model of in-service teacher training (MGMP) applying Lesson Study is disseminated in the target provinces as a form of continuing teacher professional development..</p> <p>2. The level of student learning ability in mathematics and science is improved in the target districts.</p>	<p>1. Number of districts and schools practicing the model of MGMP activities in the target provinces</p> <p>2-1. Degree of students' interest in and satisfaction toward mathematics and science learning</p> <p>2-2. Academic achievements of students in mathematics and science</p>
<p><u>Program Purpose</u></p> <p>The model of MGMP activities applying Lesson Study for quality improvement of mathematics and science teachers is developed in the target districts.</p>	<p>1. Scale of the MGMP activities (frequency of meetings, number of participants, cost, etc.)</p> <p>2. Content of the MGMP activities (facilitators, topics, materials, etc.)</p> <p>3. Teachers' satisfaction toward MGMP activities</p>
<p><u>Outputs</u></p> <p>1. Education officers in the central government and target districts recognize the effectiveness of the MGMP activities and take necessary financial and administrative measures to sustain them.</p> <p>2. Effective MGMP activities are regularly conducted in the target districts.</p> <p>2-1 MGMP facilitators are trained in the target districts.</p> <p>2-2 Principals of the target schools recognize the effectiveness of the MGMP activities and take necessary measures.</p> <p>2-3 Mathematics and science teachers improve the practical teaching competency through the MGMP activities applying Lesson Study.</p> <p>3. The monitoring and evaluation mechanism of the MGMP activities is developed.</p>	<p>1-1. Number of participants in an inception and socialization meeting and other workshops, seminars and forums</p> <p>1-2. Order of priority placed on the MGMP activities in education development plans and budget proposals at the central and district level .</p> <p>2-1-1. Number of participants in facilitator trainings</p> <p>2-1-2. Frequency of facilitation and performance of the participants who have become facilitators</p> <p>2-2-1. Number of participants (principals) in school management trainings</p> <p>2-2-2. Number of teachers participating with their principals' support in the MGMP activities and frequency of school-based trainings</p> <p>2-3-1. Number of participants (teachers) in the MGMP activities</p> <p>2-3-2. Number of teachers who have opened their lessons to their colleagues and related people for observation and reflection</p> <p>3. Frequency of monitoring and evaluation conducted by using developed methods and tools</p>
<p><u>Activities</u></p> <p>1-1 Hold an inception and socialization meeting</p> <p>1-2 Hold MGMP forums for dissemination to neighboring districts</p> <p>1-3 Develop dissemination strategies of MGMP activities applying Lesson Study</p> <p>2-1 Analyze the situation of current MGMP activities</p> <p>2-2 Design a detailed plan of the MGMP activities</p> <p>2-3 Conduct facilitator trainings</p> <p>2-4 Conduct school management trainings for principals</p> <p>2-5 Practice Lesson Study in the MGMP activities</p> <p>2-6 Practice Entire-school Lesson Study in some schools on a pilot basis</p> <p>2-7 Compile the experiences of the MGMP activities into guidelines</p> <p>3-1 Develop monitoring and evaluation methods and tools of the MGMP activities</p> <p>3-2 Conduct monitoring and evaluation on the MGMP activities</p> <p>3-3 Hold evaluation workshops</p> <p>3-4 Compile the experiences of monitoring and evaluation into guidelines</p>	<p><u>Inputs</u></p> <p><Indonesian side></p> <p>- Central Government Counterpart personnel Counterpart budget (for workshop, transportation, etc.) Office space for Japanese experts (in MONE) Expenses of university resources persons (DG of Higher Education)</p> <p>- University (UPI, UNY and UM) Resource persons from each university Office space for Japanese experts in each university</p> <p>- District Government (to be selected) Counterpart personnel Office space in each target District Dinas Expenses of the MGMP activities (for workshop, transportation, etc.)</p>

Means of Verification	Important Assumptions
1-1. Records of MGMP activities in the target provinces 2-1. Questionnaires to students 2-2. Examinations	The central government does not change the policies which place importance on MGMP activities applying Lesson Study.
1. Records of the MGMP activities 2. Records of the MGMP activities 3. Questionnaires to teachers	The target provinces and districts do not change the policies which place importance on MGMP activities applying Lesson Study.
1-1. Records of the meeting, workshops, seminars and forums 1-2. The Education development plans and budget proposals 2-1-1. Records and observation of facilitator trainings 2-1-2. Records of the MGMP activities 2-2-1. Records of school management trainings 2-2-2. Records of the MGMP activities and interview with principals 2-3. Records of the MGMP activities 3. Records of monitoring and evaluation	Education officers in the central government and target districts and all the stakeholders continue to be actively involved in this Program.
<u>Inputs</u> <Japanese side> <u>Experts</u> <ul style="list-style-type: none"> - Chief Advisor - Lesson Study - Mathematics Education - Science Education - School Management - Educational Planning and Evaluation Counterpart training in Japan: Approximately 10 people per annum Equipment: audio visual equipment Necessary expenses	<ul style="list-style-type: none"> - Three universities (UPI, UNY and UM) continue to provide technical support to this Program as resource organizations. - Most of the facilitators continue to work in education in their districts. <u>Pre-conditions</u> <ul style="list-style-type: none"> - The Ministry of National Education (MONE) is committed to strengthening the MGMP activities in both budgetary and administrative terms. - There are some district governments which express their commitment to strengthening the MGMP activities in both budgetary and administrative terms in the target provinces.

Hi

The Technical Cooperation for Strengthening In-service Teacher Training of Mathematics and Science Education at Junior Secondary Level
Draft of Plan of Operation

Expected duration for the Program: May 2006 - October 2008

	2006												2007												2008											
	May	Jun	Jul	Aug	Sep	Oct	Nov	Dec	Jan	Feb	Mar	Apr	May	Jun	Jul	Aug	Sep	Oct	Nov	Dec	Jan	Feb	Mar	Apr	May	Jun	Jul	Aug	Sep	Oct						
1. National Inception Meeting	█																																			
2. Situation analysis on current In-services Teacher Training	█																																			
3. Detailed Design of MGMP Activities		█																																		
4. Baseline Survey			█																																	
5. District Inception Meeting				█																																
6. MGMP Facilitator Training					█																															
7. School Management Training for Principals						█																														
8. MGMP Activities at Kecamatan/Wilayah Level																																				
9. Entire School Lesson Study																																				
10. Evaluation Workshop																																				
11. MGMP Forum at Kabupaten Level																																				
12. Joint Coordination Committee																																				
13. Steering Committee																																				

[Handwritten signatures and initials]

The Technical Cooperation for Strengthening In-service Teacher Training of Mathematics and Science Education at Junior Secondary Level

DESCRIPTION OF THE PROGRAM ACTIVITIES

1. National Inception Meeting

- (1) Time: At the beginning of the Program
- (2) Participants: DGQITEP, DGHE, DGPSE, MORA, BAPPENAS, MOF, provincial DINAS, district DINAS, the universities
Observer: LPMP
- (3) Activities: To confirm and share the understanding of the Program activities
- (4) Management: DGQITEP
- (5) Duration: 1 day (AM: Inception meeting, PM: Preparatory meeting among stakeholders)
- (6) Budget JICA: Transportation and accommodation fee for the participants from provincial and district DINAS
Indonesian side: Transportation and accommodation fee for others, per diem and refreshment

2. District Inception Meeting

- (1) Time: Late July - early August 2006
- (2) Participants: Provincial and district DINAS, the universities, MGMP representatives, MKKS/KKKS representatives, DGQITEP, district Board of Education, district assembly, district MORA office and LPMP
- (3) Activities: To confirm and share the understanding of the Program activities
- (4) Management: District DINAS
- (5) Venue: District DINAS
- (6) Duration: 1 day (AM: Inception meeting, PM: Preparatory meeting among stakeholders)
- (7) Budget JICA: Transportation fee for the participants
Indonesian side: Transportation fee, accommodation fee, per diem for the participants, refreshment and stationery

3. MGMP Facilitator Training

- (1) Frequency: 2 times/semester
- (2) Participants: MGMP core teachers, principals, subject supervisors from district DINAS
Observers: MONE, provincial DINAS and LPMP
Trainers: The university faculty members
- (3) Activities: In-depth case studies of lesson practices
- (4) Management: District DINAS
- (5) Duration: 2 days/training
- (6) Venue: District DINAS or schools
- (7) Budget JICA: Transportation fee for the MGMP core teachers and principals
Indonesian side: Transportation and accommodation fee for others, per diem, refreshment and stationery

4. School Management Training

- (1) Frequency: 2 times/year (the beginning of every school semester)
- (2) Participants: Principals of target schools
Trainers: The university faculty members
Observer: LPMP
- (3) Activities: For principals to gain knowledge and skills of school improvement including Lesson Study
- (4) Management: District DINAS
- (5) Duration: 1 day/training
- (6) Venue: District DINAS or schools
- (7) Budget JICA: Transportation fee for principals
Indonesian side: Transportation and accommodation fee for others, per diem, refreshment and stationery

J

Duc G J

5. MGMP Activities at Kecamatan/Wilayah Level

- (1) Frequency: in principle 2 times/month (One time: Preparation for lesson, One time: Open lesson and reflection)
- (2) Participants:
 - Lesson plan preparation: All the teachers in mathematics and science in the target districts and the university faculty members
 - Open lesson: Provincial DINAS, district DINAS, Principals and subject supervisor
 - Observer: LPMP
- (3) Activities: Lesson Study (Preparation of lesson plan, lesson observation and reflection)
- (4) Management: MGMP and district DINAS (with support from MKKS/KKKS and the universities)
- (5) Venue: Schools in the target districts
- (6) Duration: 1 day/activity
- (7) Budget: Indonesian side: Transportation fee, accommodation fee and per diem for participants, honoraria for the university, refreshment and stationery

6. Entire-School Lesson Study in some schools on a pilot basis

- (1) Frequency: 2 times/month
- (2) Participants: All the teachers in the schools, the university faculty members and other interested parties
 - Observer: LPMP
- (3) Activities: To conduct Lesson Study with participation of all the teachers in the schools
- (4) Management: Principals in the schools
- (5) Duration: 1 day/activity
- (6) Budget: Indonesian side: Transportation fee for the university faculty members

7. Evaluation Workshop on Lesson Study

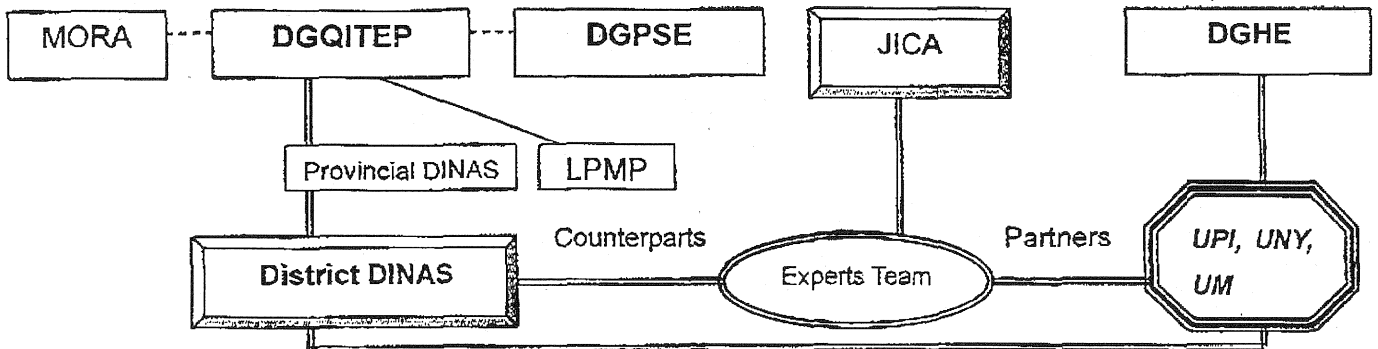
- (1) Frequency: 2 times/year (the end of school semester)
- (2) Participants: MONE, provincial DINAS, district DINAS, MGMP core teachers, principals and the university faculty members
 - Observer: LPMP
- (3) Activities: To present and compare the impact of Lesson Study, and feedback the result to the further MGMP
- (4) Management: District DINAS
- (5) Duration: 1 day/workshop
- (6) Venue: District DINAS or schools
- (7) Budget JICA: Transportation fee for the teachers and principals
 - Indonesian side: Transportation and accommodation fee for others, per diem, refreshment and stationery

8. MGMP Forum at District Level

- (1) Frequency: 2 times/year (the end of every school semester)
- (2) Participants: MONE, provincial DINAS, district DINAS, principals and teachers from neighbouring districts
 - Presenters: District DINAS and the university faculty members
 - Observer: LPMP
- (3) Activities: To disseminate the experiences of the MGMP activities to the participants from the neighbouring districts
- (4) Management: District DINAS
- (5) Duration: 1 day/forum
- (6) Budget JICA: Transportation fee and per diem for the participants from the neighbouring districts
 - Indonesian side: Transportation and accommodation fee for others, per diem, refreshment and stationery

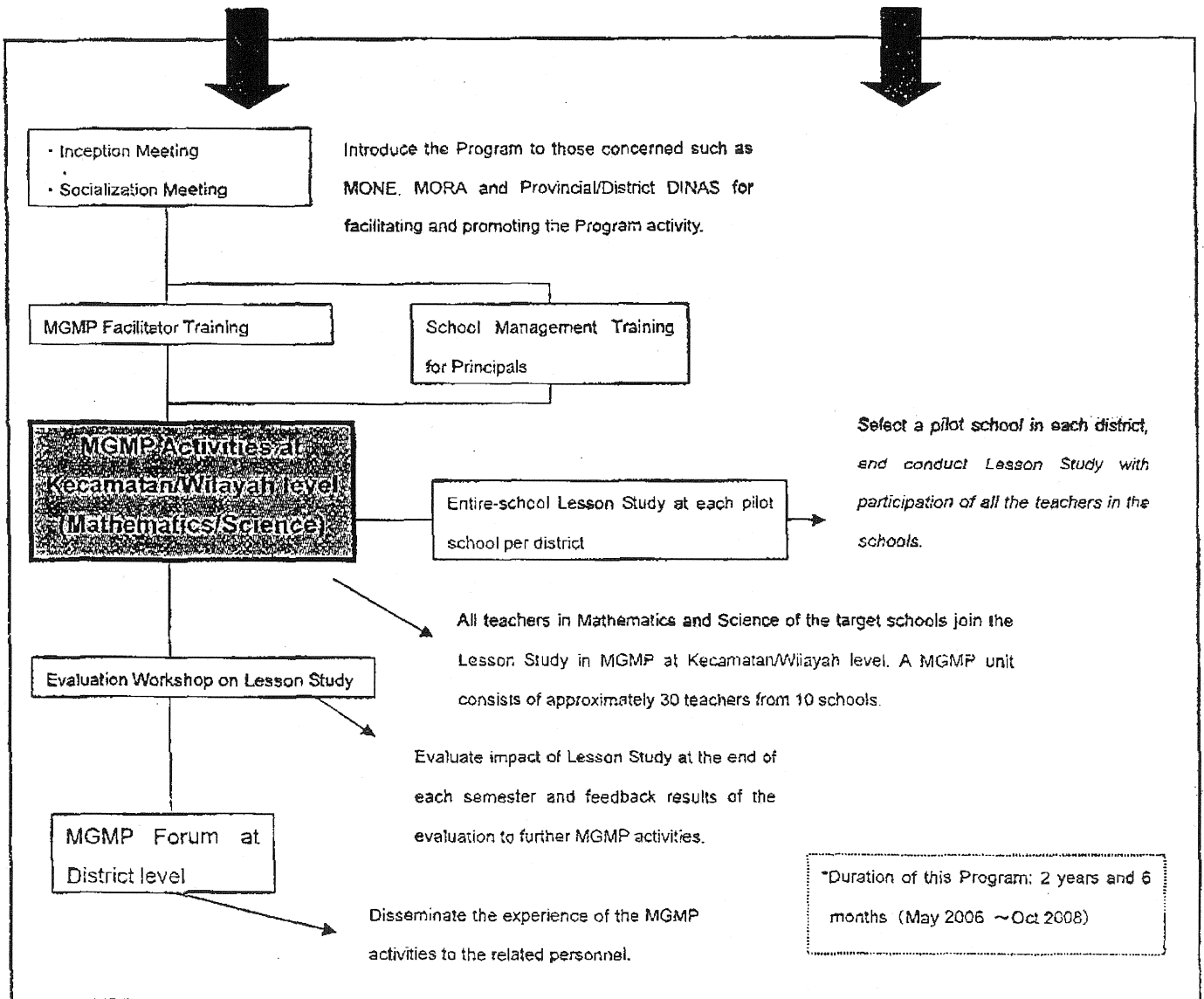
Strengthening In-service Teacher Training of Mathematics and Science Education at Junior Secondary Level Program Image

Annex 3



District DINAS has responsibility for planning, organizing, coordinating and monitoring Lesson Study and other related activities.

Technical Support



F

Handwritten signature

Tentative Estimate of Expenses and Cost-Sharing Plan (West Jawa, Yogyakarta, East Jawa)
(for 2006/2007)

ITEM OF EXPENSES	Place	Total	JICA	DGQITEP MONE	DGHE MONE	LPMP	Districts	Participants / Schools
I National Inception Meeting	Jakarta	48,030,000	0	41,730,000	0	6,300,000	0	0
II District Inception Meeting & Socialization	3 Districts	31,170,000	5,250,000	22,020,000	0	600,000	3,300,000	0
III Facilitator Training	3 Districts	158,250,000	36,000,000	91,450,000	0	2,400,000	38,400,000	0
IV School Management Training	3 Districts	600,000	30,000,000	34,620,000	0	1,200,000	9,600,000	0
V MGMP Activities	60 Clusters	1,524,900,000	0	80,100,000	360,000,000	4,800,000	120,000,000	960,000,000 **
VI Entire-School MGMP activities	3 Schools	30,600,000	0	16,500,000	12,000,000	1,200,000	900,000	0
VII Evaluation Workshop on Lesson Study	3 Districts	60,300,000	21,000,000	31,500,000	0	1,200,000	6,600,000	0
VIII MGMP Forum for dissemination	3 Districts	68,520,000	22,500,000	38,220,000	0	1,200,000	6,600,000	0
IX Joint Coordinating Committee Meeting	Jakarta	69,300,000	0	69,300,000	0	0	0	0
X Steering Committee Meeting	3 Districts	55,800,000	15,000,000	22,800,000	0	0	18,000,000	0
XI Other Activities Funded by JICA * (Expert dispatchment, necessary equipment, counterpart training program in Japan, baseline survey, etc.)		9,100,000,000	9,100,000,000	0	0	0	0	0
Grand Total		11,222,290,000	9,229,750,000	438,240,000	372,000,000	18,900,000	203,400,000	960,000,000

* XI is rough estimate at this point. The breakdown will be decided by JICA Headquarters later.

** DGQITEP, Districts, and schools will share the cost for the activities. The percentage of sharing will be decided later.

Tentative Estimate of Expenses and Cost-Sharing Plan (West Java, Yogyakarta, East Java)
(for 2006/2007)

ITEM OF EXPENSES	Place	BREAKDOWN	Total	JICA	DGQITEP MONE	DGHE MONE	LPMP	Districts	Participants / Schools
I National Inception Meeting	Piice Jakarta								
[Transportation]									
Participants from Jakarta		Rp 100,000 x 20 persons x 1 day	2,000,000		2,000,000				
Participants from 3 universities		Rp 600,000 x 6 persons x 2 days	7,200,000		7,200,000				
Participants from 3 provincial Dinas		Rp 600,000 x 6 persons x 2 days	7,200,000		7,200,000				
Participants from 3 district Dinas		Rp 600,000 x 6 persons x 2 days	7,200,000		7,200,000				
Participants from 3 LPMP		Rp 600,000 x 3 persons x 2 days	3,600,000			3,600,000	3,600,000		
Subtotal			27,200,000						
[Accommodation]									
Participants from 3 universities		Rp 300,000 x 6 persons x 2 days	3,600,000		3,600,000				
Participants from 3 provincial Dinas		Rp 300,000 x 6 persons x 2 days	3,600,000		3,600,000				
Participants from 3 district Dinas		Rp 300,000 x 6 persons x 2 days	3,600,000		3,600,000				
Participants from 3 LPMP		Rp 300,000 x 3 persons x 2 days	1,800,000			1,800,000	1,800,000		
Subtotal			12,600,000						
[Per diem]									
Participants from 3 universities		Rp 150,000 x 6 persons x 2 days	1,800,000		1,800,000				
Participants from 3 provincial Dinas		Rp 150,000 x 6 persons x 2 days	1,800,000		1,800,000				
Participants from 3 district Dinas		Rp 150,000 x 6 persons x 2 days	1,800,000		1,800,000				
Participants from 3 LPMP		Rp 150,000 x 3 persons x 2 days	900,000			900,000	900,000		
Subtotal			6,300,000						
[Refreshment & Venue]									
Snack and meals at the meeting		Rp 30,000 x 61 persons x 1 day	1,830,000		1,830,000				
Venue		Rp 100,000 x 1 day	100,000		100,000				
Subtotal			1,930,000						
Activity Total			48,030,000	0	41,730,000	0	6,300,000	0	0
II District Inception Meeting & Socialization	3 Districts								
[Transportation]									
Participants from Jakarta		Rp 600,000 x 2 persons x 2 days x 3 districts	7,200,000		7,200,000				
Participants from 3 universities		Rp 100,000 x 6 persons x 1 days x 3 districts	1,800,000		1,800,000				
Participants from 3 provincial Dinas		Rp 100,000 x 3 persons x 1 day x 3 districts	900,000		900,000				
Participants from 3 district Dinas		Rp 50,000 x 10 persons x 1 day x 3 districts	1,500,000		900,000			1,500,000	
Participants (principals & teachers)		Rp 50,000 x 20 persons x 1 day x 3 districts	3,000,000	3,000,000					
Participants (district stakeholders)		Rp 50,000 x 15 persons x 1 day x 3 districts	2,250,000	2,250,000					
Participants from LPMP		Rp 100,000 x 2 persons x 1 day x 3 districts	600,000				600,000		

ITEM OF EXPENSES	Place	BREAKDOWN	Total	JICA	DGGITEP MONE	DGHE MONE	LPMP	Districts	Participants / Schools
[Accommodation]									
Participants from DGGITEP [Per diem]		Rp 300,000 x 3 persons x 2 nights x 3 districts:	5,400,000		5,400,000				
Participants from DGGITEP [Refreshment & Venue]		Rp 150,000 x 3 persons x 2 days x 3 districts:	2,700,000		2,700,000				
Snack and meals at the meeting		Rp 20,000 x 67 persons x 1 day x 3 districts:	4,020,000		4,020,000				
Venue		Rp 100,000 x 1 day x 3 Districts	300,000					300,000	
Subtotal			4,320,000						
[Stationery]			1,500,000					1,500,000	
Handouts & materials		Rp 500,000 x 3 districts x 1 day	1,500,000						
Activity Total			31,170,000	5,250,000	22,020,000	0	600,000	3,300,000	0
III									
Facilitator Training [Transportation]	3 Districts								
Participants from Jakarta		Rp 600,000 x 1 person x 4 days x 3 districts:	7,200,000		7,200,000				
Participants from 3 universities		Rp 100,000 x 6 persons x 8 days x 3 districts:	14,400,000		14,400,000				
Participants from 3 provincial Dinas		Rp 50,000 x 2 persons x 4 days x 3 districts:	1,200,000		1,200,000				
Participants from 3 district Dinas		Rp 50,000 x 10 persons x 8 days x 3 districts:	12,000,000					12,000,000	
Participants (teachers)		Rp 50,000 x 20 persons x 8 days x 3 districts:	24,000,000	21,000,000					
Participants (principals)		Rp 50,000 x 10 persons x 8 days x 3 districts:	12,000,000	12,000,000					
Observers from 3 LPMP		Rp 100,000 x 2 persons x 4 days x 3 districts:	2,400,000				2,400,000		
Subtotal			73,200,000						
[Accommodation]									
Participants from DGGITEP [Per diem]		Rp 300,000 x 1 person x 4 nights x 3 districts:	3,600,000		3,600,000				
Participants from DGGITEP [Honoreria]		Rp 150,000 x 1 person x 5 days x 3 districts:	2,250,000		2,250,000				
Resource persons from 3 universities		Rp 200,000 x 6 persons x 8 days x 3 districts:	28,800,000		28,800,000				
[Refreshment & Venue]									
Snack and meals at the meeting:		Rp 20,000 x 50 persons x 8 days x 3 districts:	24,000,000		24,000,000				
Venue		Rp 100,000 x 8 days x 3 districts:	2,400,000		2,400,000			2,400,000	
Subtotal			26,400,000						
[Stationery]			24,000,000					24,000,000	
Handouts & materials		Rp 1,000,000 x 8 days x 3 districts:	24,000,000						
Activity Total			158,250,000	36,000,000	81,450,000	0	2,400,000	38,400,000	0
IV									
School Management Training (principals) [Transportation]	3 Districts								
Participants from Jakarta		Rp 600,000 x 2 persons x 2 days x 3 districts:	7,200,000		7,200,000				
Participants from 3 universities:		Rp 100,000 x 3 persons x 2 days x 3 districts:	1,800,000		1,800,000				
Participants from 3 provincial Dinas		Rp 100,000 x 2 persons x 2 days x 3 districts:	1,200,000		1,200,000				

ITEM OF EXPENSES	Unit	BREAKDOWN	Total	JICA	DGQITEP MONE	DGHE MONE	LPMP	Districts	Participants / Schools
Participants from 3 district Dinas	Rp	50,000 x 10 persons x 2 days x 3 districts	3,000,000					3,000,000	
Participants (principals)	Rp	50,000 x 100 persons x 2 days x 3 districts	30,000,000	30,000,000					
Observers from 3 LPMP	Rp	100,000 x 2 persons x 2 days x 3 districts	1,200,000				1,200,000		
Subtotal			44,400,000						
[Accommodation]					3,600,000				
Participants from DGQITEP	Rp	300,000 x 2 persons x 2 nights x 3 districts	3,600,000						
[Per diem]					2,700,000				
Participants from DGQITEP	Rp	150,000 x 2 persons x 3 days x 3 districts	2,700,000						
[Honoraria]					3,600,000				
Resource persons from 3 universities	Rp	200,000 x 3 persons x 2 days x 3 districts	3,600,000						
[Refreshment & Venue]					14,520,000				
Snack and meals at the meeting	Rp	20,000 x 121 persons x 2 days x 3 districts	14,520,000						
Venue	Rp	100,000 x 2 days x 3 districts	600,000					600,000	
Subtotal			15,120,000						
[Stationery]					6,000,000				
Handouts & materials	Rp	1,000,000 x 2 days x 3 districts	6,000,000	30,000,000	34,620,000	0	1,200,000	6,000,000	0
Activity Total			75,420,000						
V MGMP Activities									
[Transportation]									
Observers from Jakarta (M&E)	Rp	600,000 x 2 persons x 8 days x 3 districts	28,800,000		28,800,000				
Participants from 3 universities	Rp	100,000 x 20 persons x 20 days x 3 districts	120,000,000		120,000,000				
Observers from 3 provincial Dinas	Rp	100,000 x 2 persons x 8 days x 3 districts	4,800,000		4,800,000			60,000,000	
Participants from 3 district Dinas	Rp	50,000 x 1 person x 400 times x 3 districts	60,000,000						960,000,000
Participants (teachers)	Rp	20,000 x 800 persons x 20 times x 3 districts	960,000,000		24,000,000		4,800,000		
Participants (principals)	Rp	20,000 x 20 persons x 20 times x 3 districts	24,000,000						
Observers from 3 LPMP	Rp	100,000 x 2 persons x 8 days x 3 districts	4,800,000						
Subtotal			1,202,400,000						
[Honoraria]									
Resource persons from 3 universities	Rp	200,000 x 20 persons x 20 days x 3 districts	240,000,000			240,000,000			
[Accommodation]									
Participants from DGQITEP (M&E)	Rp	300,000 x 2 persons x 8 nights x 3 districts	14,400,000		14,400,000				
[Per diem]					8,100,000				
Participants from DGQITEP (M&E)	Rp	150,000 x 2 persons x 9 days x 3 districts	8,100,000						
[Stationery]									
Handouts & materials	Rp	50,000 x 20 clusters x 20 times x 3 districts	60,000,000					60,000,000	
Activity Total			1,524,300,000	0	80,100,000	360,000,000	4,800,000	120,000,000	960,000,000
VI Entire-School MGMP Activities									
[Transportation]									
Observers from Jakarta	Rp								

ITEM OF EXPENSES	Place	BREAKDOWN	Total	JICA	DGOITEP MONE	DGHE MONE	LPMP	Districts	Participants / Schools
Resource persons from 3 universities		Rp 100,000 x 3 persons x 2 days x 3 districts	1,800,000		1,800,000				
Observers from 3 provincial Dinas		Rp 100,000 x 2 persons x 2 days x 3 districts	1,200,000		1,200,000			900,000	
Participants from 3 district Dinas		Rp 50,000 x 3 persons x 2 days x 3 districts	900,000						
Observers from 3 LPMP		Rp 100,000 x 2 persons x 2 days x 3 districts	1,200,000				1,200,000		
Subtotal			12,300,000						
[Accommodation]									
Participants from DGOITEP		Rp 300,000 x 2 persons x 2 nights x 3 districts	3,600,000		3,600,000				
[Per diem]									
Participants from DGOITEP		Rp 150,000 x 2 persons x 3 days x 3 districts	2,700,000		2,700,000				
[Honoraria]									
Resource persons from 3 universities		Rp 200,000 x 2 persons x 10 days x 3 districts	12,000,000			12,000,000			
VI Activity Total			30,600,000	0	16,500,000	12,000,000	1,200,000	900,000	0
VII Evaluation Workshop on Lesson Study	3 Districts								
[Transportation]									
Participants from Jakarta		Rp 600,000 x 2 persons x 3 days x 3 districts	10,800,000		10,800,000				
Participants from 3 universities		Rp 100,000 x 4 persons x 2 days x 3 districts	2,400,000		2,400,000				
Participants from 3 provincial Dinas		Rp 100,000 x 2 persons x 2 days x 3 districts	1,200,000		1,200,000				
Participants from 3 district Dinas		Rp 50,000 x 10 persons x 2 days x 3 districts	3,000,000					3,000,000	
Participants (teachers)		Rp 50,000 x 60 persons x 2 days x 3 districts	18,000,000	18,000,000					
Participants (principals)		Rp 50,000 x 10 persons x 2 days x 3 districts	3,000,000	3,000,000					
Observers from 3 LPMP		Rp 100,000 x 2 persons x 2 days x 3 districts	1,200,000				1,200,000		
Subtotal			39,600,000						
[Accommodation]									
Participants from DGOITEP		Rp 300,000 x 2 persons x 2 nights x 3 districts	3,600,000		3,600,000				
[Per diem]									
Participants from DGOITEP		Rp 150,000 x 2 persons x 3 days x 3 districts	2,700,000		2,700,000				
[Refreshment & Venue]									
Snack and meals at the meeting		Rp 20,000 x 90 persons x 2 days x 3 districts	10,800,000		10,800,000				
Venue		Rp 100,000 x 2 days x 3 districts	600,000					600,000	
Subtotal			11,400,000						
[Stationery]									
Handouts & materials		Rp 500,000 x 2 days x 3 districts	3,000,000					3,000,000	
VII Activity Total			60,300,000	21,000,000	31,500,000	0	1,200,000	6,600,000	0
VIII MGMP Forum for dissemination	3 Districts								
[Transportation]									
Participants from Jakarta		Rp 600,000 x 2 persons x 4 days x 3 districts	14,400,000		14,400,000				
Participants from 3 universities		Rp 100,000 x 4 persons x 2 days x 3 districts	2,400,000		2,400,000				
Participants from 3 provincial Dinas		Rp 100,000 x 3 persons x 2 days x 3 districts	1,800,000		1,800,000				
Participants from 3 district Dinas		Rp 50,000 x 10 persons x 2 days x 3 districts	3,000,000					3,000,000	

ITEM OF EXPENSES	Place	BREAKDOWN	Total	JICA	DGQITEP MONE	DGHE MONE	LPMP	Districts	Participants / Schools
Participants (principals & teachers)		Rp 50,000 x 15 persons x 2 days x 3 districts	4,500,000	4,500,000					
Participants (district stakeholders)		Rp 100,000 x 30 persons x 2 days x 3 districts	18,000,000	18,000,000			1,200,000		
Observers from 3 LPMP		Rp 100,000 x 2 persons x 2 days x 3 districts	1,200,000						
Subtotal			45,300,000						
[Accommodation]									
Participants from DGQITEP		Rp 300,000 x 2 persons x 4 nights x 3 districts	7,200,000		7,200,000				
[Per diem]									
Participants from DGQITEP		Rp 150,000 x 2 persons x 5 days x 3 districts	4,500,000		4,500,000				
[Refreshment & Venue]									
Snack and meals at the meeting		Rp 20,000 x 65 persons x 2 days x 3 districts	7,920,000		7,920,000				
Venue		Rp 100,000 x 2 days x 3 districts	600,000					600,000	
Subtotal			8,520,000						
[Stationery]									
Handouts & materials		Rp 500,000 x 2 day x 3 districts	3,000,000					3,000,000	
VIII Activity Total			68,520,000	22,500,000	38,220,000	0	1,200,000	6,600,000	0
IX Joint Coordinating Committee Meeting	Jakarta								
[Transportation]									
Participants from Jakarta		Rp 100,000 x 20 persons x 2 days	4,000,000		4,000,000				
Participants from 3 universities		Rp 600,000 x 9 persons x 4 days	21,600,000		21,600,000				
Participants from 3 provincial Dinns		Rp 600,000 x 6 persons x 4 days	14,400,000		14,400,000				
Subtotal			40,000,000						
[Accommodation]									
Participants from 3 universities		Rp 300,000 x 9 persons x 4 days	10,800,000		10,800,000				
Participants from 3 provincial Dinns		Rp 300,000 x 6 persons x 4 days	7,200,000		7,200,000				
Subtotal			18,000,000						
[Per diem]									
Participants from 3 universities		Rp 150,000 x 9 persons x 4 days	5,400,000		5,400,000				
Participants from 3 provincial Dinns		Rp 150,000 x 6 persons x 4 days	3,600,000		3,600,000				
Subtotal			9,000,000						
[Refreshment & Venue]									
Snack and meals at the meeting		Rp 30,000 x 35 persons x 2 days	2,100,000		2,100,000				
Venue		Rp 100,000 x 2 days	200,000		200,000				
Subtotal			2,300,000						
IX Activity Total			69,300,000	0	69,300,000	0	0	0	0
X Steering Committee Meeting	3 Districts								
[Transportation]									
Participants from 3 universities		Rp 100,000 x 3 persons x 10 days x 3 districts	9,000,000		9,000,000				
Participants from 3 district Dinns		Rp 50,000 x 10 persons x 10 days x 3 districts	15,000,000		9,000,000			15,000,000	
Participants (teachers)		Rp 50,000 x 5 persons x 10 days x 3 districts	7,500,000	7,500,000					

5

Handwritten initials and marks at the bottom right of the page.

ITEM OF EXPENSES	Place	BREAKDOWN	Total	JICA	DGQITEP MONE	DGHE MONE	LPMP	Districts	Participants / Schools
Participants (principals)			7,500,000	7,500,000					
Transportation Total [Refreshment]	JP	50,000 x 5 persons x 10 days x 3 districts	39,000,000						
Snack and meals at the meeting, [Stationery]	JP	20,000 x 23 persons x 10 day x 3 districts	13,800,000		13,800,000				
Handouts & materials	JP	100,000 x 10 day x 3 districts	3,000,000					3,000,000	
X Activity Total			55,800,000	15,000,000	22,800,000	0	0	18,000,000	0
XI Other Activities Funded by JICA (Expert dispatchment, necessary equipment, counterpart training program in Japan, baseline survey, etc.)			9,100,000,000	9,100,000,000	0	0	0	0	0
Grand Total			11,222,290,000	9,229,750,000	438,240,000	372,000,000	18,900,000	203,400,000	960,000,000

* 10 clusters
2 Subject matters
20 activities per year
3 districts
40 teachers per cluster

1200 MGMP activities per year (10 months)

LIST OF PARTICIPANTS

<Indonesian Side>

NAME	Position	Organization
Fasli Jalal	Director General	Directorate General for Quality Implement Teachers and Education Personnel(DGQITEP)
Satryo Soemantri Brodjonegoro	Director General	Directorate General for Higher Education
Suyanto	Director General	Directorate General for Management Primary and Secondary Education (DGMPSE)
Hamid Muhammad	Director	Directorate of Junior Secondary Education DGMPSE
Bahrul Hayat	Secretary to Director General	DGQITEP
Yukon Putra	Work Unit Staff	DGQITEP
Hendarman	Work Unit Staff	DGQITEP
Yulianus Kuayo	Work Unit Staff	DGQITEP
Baby Poernomo	Work Unit Staff	DGQITEP
Yuli Feizal	Work Unit Staff	DGQITEP
M. Machin Ervan	Work Unit Staff	DGQITEP
Eisuke Saito	JICA Expert	INSTEP-JICA
Yumi Kanda	JICA Expert	DGMPSE

<Japanese Side>

NAME	Position	Organization
Jun Sakuma	Leader of mission	JICA
Naomi Takasawa	Mission member	JICA
Satoru Takahashi	Mission member	JICA
Takayuki Sugawara	Mission member	JICA

J

Q

Shi

