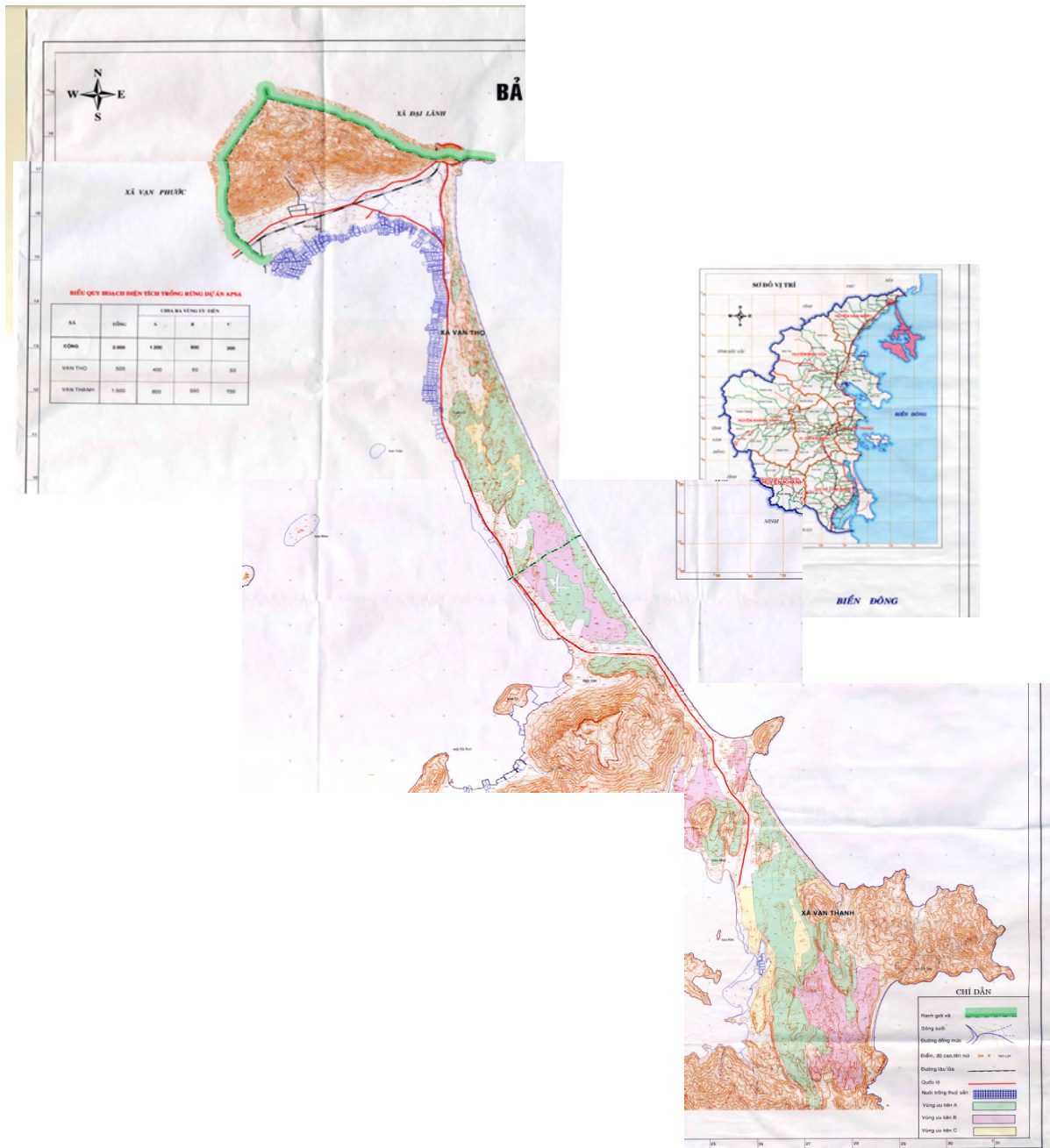


付属資料 2 ABC 区分地図 カンホア省 2006年1月16日受理 1枚目

凡例：緑=A、ピンク=B、白=C (区分線の記入なし)



付属資料 3 Filed Note on Summary of APSA requested sites

2006年1月16日の4省会議配布資料

配布版はベトナム語版（本資料はベトナム語への翻訳用の英語版）

APSA 要請対象地の現地調査ノート—コンサルタンツの現地調査結果—

2006年1月12日現在

Field Note on Summary of APSA requested sites-Consultants' observation-

12, 01, 2006

注：

本資料は、コンサルタントの現地踏査時（2005年12月28日から2006年1月7日）の調査所見を取りまとめたものであり、調査箇所の概要説明のためにMARD/4省DARD会議の席上配布した。

内容は、客観的事実関係を記述し、技術的観点からの意見にわたる部分については各DARD担当者との協議・合意内容を反映している。

各DARDは、その後、再調査し、1月16日の個別協議において

APSA対象地、ABC区分及び面積をコンサルタントとの間で再調整し、

合同会議全体会議で確認し、M/Mに面積表を添付した。

## Field Note on Summary of APSA requested sites

Consultants' observation  
12, 01, 2006

### PRELIMINARY STUDY ON THE AFFORESTATION PROJECT ON SANDY AREA IN THE SOCIALIST REPUBLIC OF THE VIETNAM

#### 1 Than Binh District Quang Nam Province

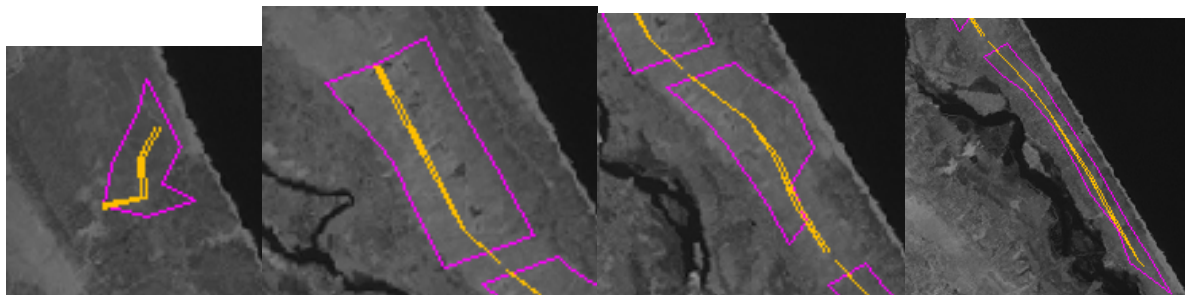
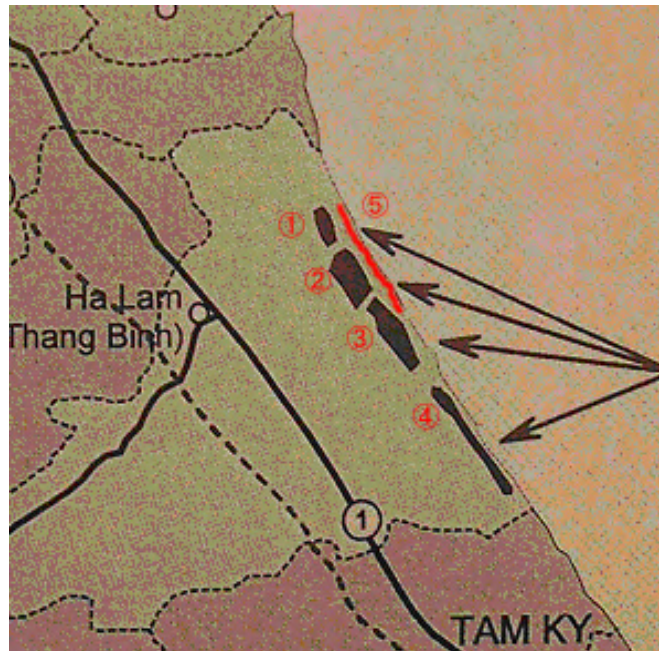
Requested for APSA are located in Binh Duong, Binh Nam, Binh Dao, Binh Hai and Binh Minh communes.

##### Location Map APSA

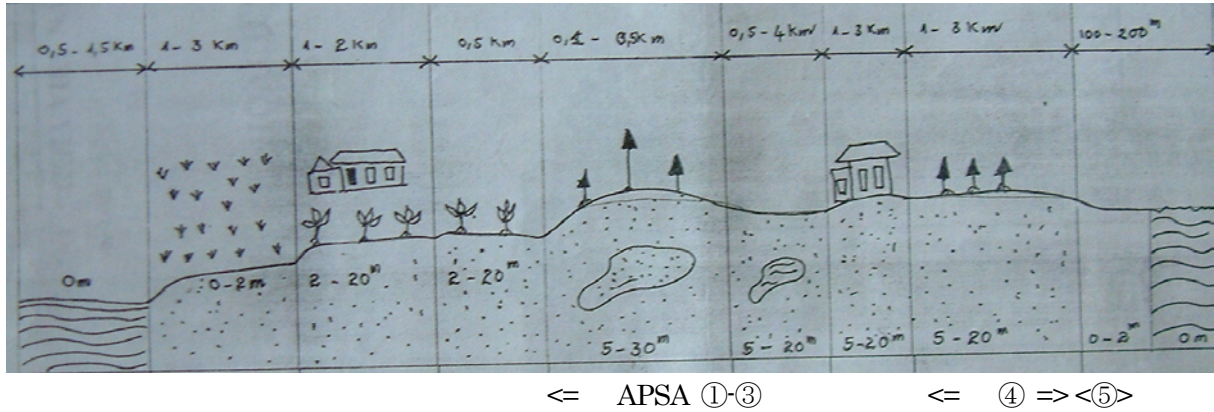
The areas shown on map right are 5 sites. The site No 5 is a new area that mentioned on the occasion of the consultant survey in this time. The total areas are readjusted to meet the volume of the original requested areas as 800 ha.

The areas from No 1 to No 4 are not connected with sea shore line. Generally, the areas are gentle slope including small and gentle hills. Within the requested areas, there are cemeteries, streams, occasionally ponds (which are flooded at the time of the rainy season); therefore, real plant able areas are roughly projected 7-10% of total areas.

In this area, existed planted areas are observed. Spaced small stands (1-3m high) are remain, and sand surface is covered grasses. These areas are projected roughly 30% of the total areas.



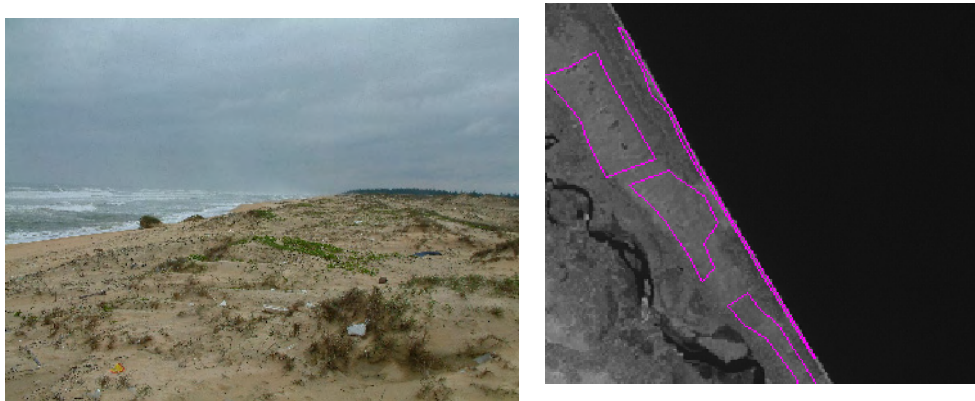
Satellite data and field observation tells that the requested area 800 ha is included existed planted area and not suitable parts in natural and socio-economical reason. Therefore, the target areas for APSA may decrease as approximately projected as 700 ha and more.



An image of the sites from No1 to No4 shows on the above cross section chart. The village houses are located on behind gentle sand hill expanded from 100-200 m from sea shore line. Between the first sand hill and second sand hill, there are farm land. The sand drifted from sea shore is send by sough west wind to behind second hills where the PACSA had planted in summer season, and the sand accumulated on the PACSA areas are send back to farmland between two sand hills on the winter season by north west monsoon. In this natural condition, DARD Quang Nam emphasized that to conserve the farm land and villages between tow sand hills and back site of the PACSA areas, stabilize the areas requested No1 to No 5 are quite important.



The newly requested site No5 is narrow area just connected to the sea shore line affected sea shore wave erosion at the storm and high waves. To protect sea shore is quite important for the villagers in urgently, therefore, DARD add the area for APSA. DARD requested to plant Coconut tree. And explained if the sea shore line has protected, the coast may effective for future eco-tourism use to contribute for income generation of the local villagers.



**Site No 1 requested area : 92 ha (Plant able area may 70ha) Existed plantation is 20%. PACSA planting techniques are applicable.**

**Site No2** requested area :294 ha (After readjusted by B/D the plant able area may approximately 250 ha) and **site No 3** requested area 193 ha (After readjusted by B/D the plant able area may approximately 150 ha) are included existed planted areas but some part are still need to surplus planting to show the conservation objectives of the forest.



Condition of the vegetation cover



In the area, occasional ponds are observed

**Site No4 requested area** : 227 ha (Plant able area may 200ha) is narrow area directory connected with sea shore line where strongly affected strong wind and storm of big wave. The areas consisted gentle slope with small sand mounds expanded 100-200m from seashore line. The vegetation covering is formulated to meet micro topography on the back side of sand mounds; nevertheless, the vegetation is easily covered by sand by strong wind. Therefore, It seems that at least 100m from sea shore line the planting seedlings are necessary to protect by bamboo pole to avoid swinging.

**Site No5 requested area** : 70 ha is located on 50-80m area on sea shore, where affected big waves erode the shore line lands. DARD considering to plant Coco nuts for maintaining the land line. This type areas are excluded in PACSA, and needed to introduce new techniques for planting. If plant Coconuts, each seedlings may need substantial measures for protection against the strong wind and wave.

**Planting Species concern:** *Casuarina* is the most suitable specie; nevertheless, DARD requested that the case to take into account to mobilize the participatory planting (to allocate the planted areas to commune villagers for maintaining the forest), the species should be diverse to meet villagers interest such as *Acacia crassicarpa*, *Meria azadrachia* (Neem) as NTFPs. If the species other than *Casuarina*, the planted places should avoid on occasional wet land (surrounded occasional ponds and streams) and sand moving parts.



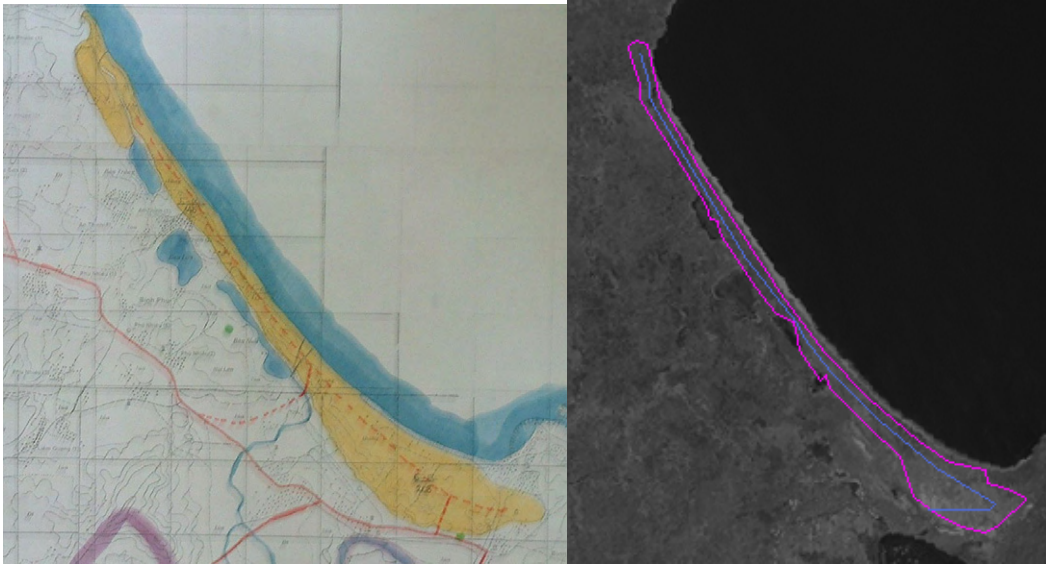
*Casuarina* PASCA



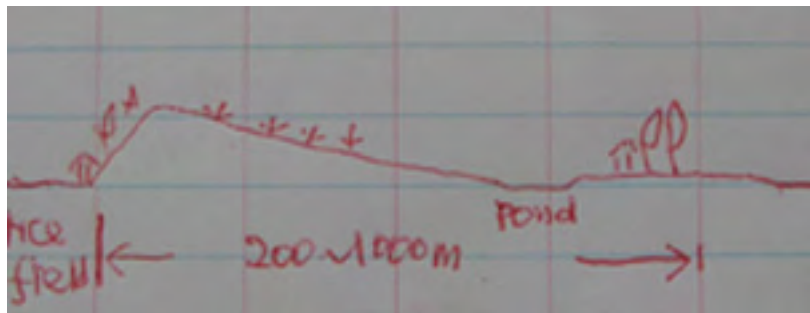
*Acacia crassicarpa*

## 2 Binh Son District Quang Ngai Province

Site No1 requested area : 340 ha (Plant able area may 300 ha)



The site located in the northern part of Quang Ngai province facing north eastern sea. Length 10km, width 200 to 1000m . Strong north eastern constant wind formed sand hill area. Gentle slope (5-10 slope degree) begin from eastern sea up to the western sand hill top, height around 50m above sea level. Steep down slope (30 slope degree) of western side is adjacent to flat rice field, including floating rice field of water body and houses with scattered old growth Casuarina, covering 75% of the area .



South eastern part contains house- farming area with old growth trees and shallow pond. People's plantation, aged 5-6 year, poor and scattered Casuarina (spacing 7-10m interval) are growing on the sand hill from the top to middle hill.

Casuarina with wind break against wind and moving sand may be necessary at planting stage. *Casuarina* is the most suitable specie for planting. Planted Casuarina on the both side of the hill should be remained. Inter planting shall be done.

The old plantation area, a part of south west, no additional supplement planting is required. Other scattered planted area's inter-planting rate may be around 75%. Real plant able area/number of seedlings will be decreased from the requested areas. DARD agreed to harmonize the requested areas at the occasion B/D survey. The areas temporally calculated using satellite data using GIS, are 340 ha and 0 ha respectively.

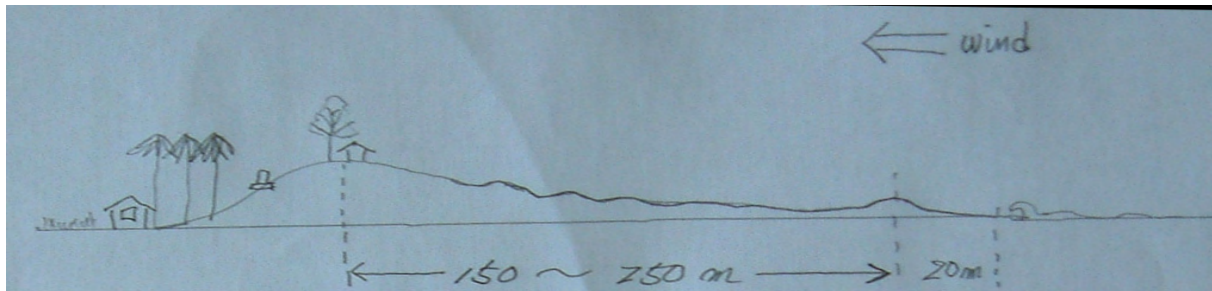
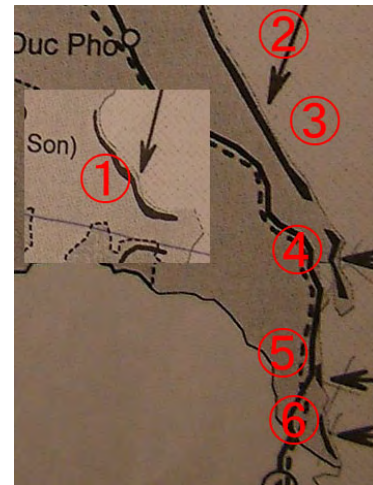


### 3 Dac Pho District Quang Guai Province

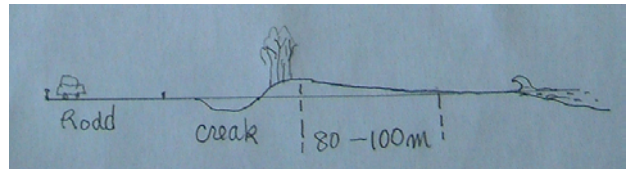
The areas shows on map right are 5 sites from No2 to No6.

**Site No2 : requested area : 324 ha** (Plant able area may 290 ha), and **Site No 3: requested area : 351 ha** (Plant able area may 260 ha) are located narrow band between planted area and sea shore line about 150-250m width. Landscape is gentle slope. Behind low sand hill there are crowded villager's housed are standing and filled good stands planted by the villagers.

The above figure shows landscape of the area in cross section. Gentle slope with small sand mounds are expanded. At least 100m from sea shore line, substantial measures for protect seedlings against wind and sand movement may necessary. *Casuarina* is the most suitable specie for planting, and if villagers request to plant Cashew, the planting areas may possible on the top part of the sand hill.

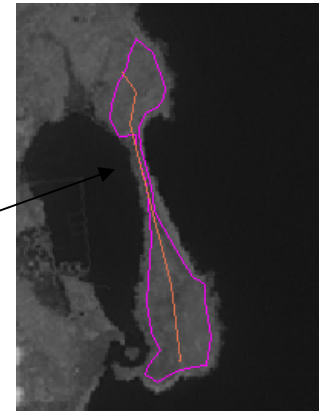


The existed planting areas covers on the big part of hill top areas, therefore, real plant able area will be decreased from requested areas. DARD side agreed to harmonize the requested areas at the occasion B/D survey. The areas temporally calculated using satellite data using GIS, are 290 ha and 260 ha respectively.



**Site No 4 : requested area** : 175 ha (Canceled, because the sand spit had destroyed by the latest storm, no access other than boat is available.)

Site No5 requested area: 39 ha is new place beside between national road 1 and sea shore line. Narrow flat sand area, in technically no special difficulty may exists.

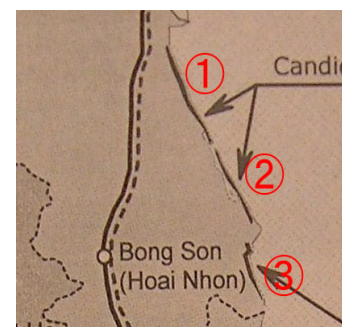


**Site No 5 requested area** : 39ha is changed the place. New place is located between sea shore and national road No 1. Flat and mallow space remaining bear sand. Wind is not so strong. The beautiful sand beach is requested to conserve.

**Site No 6 : requested area** : 172 ha

The site shows on the map below.

This site is only 100m width narrow area from sea shore line. Behind high sand hill Coconuts stands planted and houses are. The sand hill's height is reaching almost same as the coconuts tree. The collapse the sand hills, sand buried houses gardens and farm lands, and coconuts trees are strongly affected sand drifting and strong wind. The area direct affected villagers are not big; nevertheless, villager's expectation to APSA is probably highest.



On the other hand, the area planting may most difficult place in technical reason, narrow, strong wind, steep sand hill, therefore, planting cost may increase.