

APPENDICES

- Appendix 1 Study Team Members List
- Appendix 2 Study Schedule
- Appendix 3 List of Parties Concerned in the Recipient Country
- Appendix 4 Request Letter and Minutes of Understanding
- Appendix 5 References
- Appendix 6 Topographic Map of the Project Sites (After the Earthquake)

Appendix 1 Study Team Members List

Name	Assignment	Position
Hideaki Harada	Leader	Group Director, Project Management Group II, Grand Aid Management Dept., JICA
Atsushi Nakagawa	Project Coordinator	Transportation & Electric Power Team, Project Management Group I, Grand Aid Management Dept., JICA
Naoyuki Minami	Chief Consultant / Facility Reconstruction Plan	Yachiyo Engineering Co., Ltd.
Hisayuki Yamamoto	School Facility Planner / Construction Planner - Cost Estimate	Yachiyo Engineering Co., Ltd.
Masao Okui	Medical-health Facility Planner - Architect	Yachiyo Engineering Co., Ltd.
Ryouji Yamaguchi	Medical-health Equipment Planner	Yachiyo Engineering Co., Ltd.
Yutaka Imai	Study Coordinator	Yachiyo Engineering Co., Ltd.

Appendix 2 Study Schedule

1st Field Survey

No.	Date	Day	Study Contents					Overnight	
			JICA Leader / Project Coordinator (Hideaki Harada, Atsushi Nakagawa)	Chief Consultant / Facility Reconstruction Plan (Naoyuki Minami)	School Facility Planner / Construction Planner & Cost Estimation (Toshiyuki Yamamoto)	Medical Facilities Planner- Architect (Masao Okui)	Medical Equipment Planner (Ryoji Yamaguchi)		Study Coordinator (Yutaka Imai)
1	June 19	Mo	· Depart Tokyo · Arrive in Jakarta						Jakarta
2	June 20	Tu	Courtesy calls to Embassy, JICA Jakarta, BAPPENAS, MoNE and MoE and discussions						Yogyakarta
3	June 21	We	· Depart Jakarta Arrive in Yogyakarta Visit Governor of Yogyakarta, Provincial Education Office and health centers, etc. Internal discussions with the Consultant Team	· Depart Tokyo (11.25) Arrive in Jakarta (16:50) · Depart Jakarta (19:15) Arrive in Yogyakarta Evening: Team discussions	· Depart Tokyo (11.25) Arrive in Jakarta (16:50) Discussions with local consultant Preparation of subcontract documents	· Depart Tokyo (11.25) Arrive in Jakarta (16:50) · Depart Jakarta (19:15) Arrive in Yogyakarta Evening: Team discussions			Jakarta (Yamamoto) Yogyakarta (JICA, Minami, Okui, Yamaguchi, Imai)
4	June 22	Th	· Discussions with Bantul Regency Education Office and Health Office · Depart Yogyakarta (18:00) Arrive in Jakarta (19:00)	· Discussions with Provincial Education Office · Survey of target schools · Depart Yogyakarta Arrive in Jakarta	· Application for approval of subcontract documents · Data collection for project cost estimation	· Discussions with Provincial Education Office and Health Office, etc. · Field survey	· Discussions with Provincial Education Office and Health Office, etc. · Field survey	· Discussions with Provincial Education Office and Health Office, etc. · Field survey	Jakarta (Kan, Yamamoto, Minami) Yogyakarta (Okui, Yamaguchi, Imai)
5	June 23	Fr	· Discussions with the Indonesian side · Meeting at JICA Jakarta Depart Jakarta	· Meeting at the JICA Jakarta Office	· Meeting at the JICA Jakarta Office	· Medical facilities plan	· Field survey · Medical equipment plan	· Field survey · School facilities plan	Jakarta (Kan, Yamamoto, Minami) Yogyakarta (Okui, Yamaguchi, Imai)
6	June 24	Sa	Arrive in Narita	· Depart Jakarta Arrive in Yogyakarta · Survey of target sites · Preparation of outline materials	· Depart Jakarta Arrive in Yogyakarta · Survey of target sites · Preparation of outline materials	· Medical facilities plan	· Field survey · Medical equipment plan	· Field survey · School facilities plan	Yogyakarta (All consultants)
7	June 25	Su		· Preparation of outline materials	· Preparation of outline materials	· Medical facilities plan	· Medical equipment plan	· Summary of current status	Yogyakarta (All consultants)
8	June 26	Mo		· Discussions with Health Office · Survey of health centers	· Field survey	· Discussions with Health Office	· Discussions with Health Office	· Facilities plan	Yogyakarta (All consultants)
9	June 27	Tu		· Discussions with Education Office	· Discussions with Education Office	· Facilities plan	· Equipment plan	· Facilities plan	Yogyakarta (All consultants)
10	June 28	We		· Discussions with Education Office	· Facilities plan	· Facilities plan	· Equipment plan	· Facilities plan	Yogyakarta (All consultants)
11	June 29	Th		· Preparation of summary	· Facilities plan	· Facilities plan	· Equipment plan	· Facilities plan	Yogyakarta (All consultants)
12	June 30	Fr		· Discussions with Health Office	· Discussions with Health Office	· Discussions with Health Office	· Discussions with Health Office	· Discussions with Health Office	Yogyakarta (All consultants)
13	July 01	Sa		· Discussions with Education Office	· Discussions with Education Office	· Preparation of summary	· Preparation of summary · Field survey and discussions	· Discussions with Education Office	Yogyakarta (All consultants)
14	July 02	Su		· Depart Jakarta Arrive in Yogyakarta	· Depart Jakarta Arrive in Yogyakarta	· Depart Jakarta Arrive in Yogyakarta	· Depart Jakarta Arrive in Yogyakarta	· Depart Jakarta Arrive in Yogyakarta	Jakarta (All consultants)
15	July 03	Mo		· JICA Report discussions Depart Jakarta (00:25)	· JICA Report discussions	· JICA Report discussions Depart Jakarta		· JICA Report discussions	Jakarta (Yamamoto, Okui), On plane (Minami, Okui, Yamaguchi)
16	July 04	Tu		Arrive in Narita (09:45)	· Facilities design	Arrive in Narita		· Facilities design	Jakarta (Yamamoto, Okui)

No.	Date	Day	Study Contents				Study Coordinator	Overnight	
			JICA Leader / Project Coordinator	Chief Consultant / Facility Reconstruction Plan	School Facility Planner / Construction Planner & Cost Estimation	Medical Facilities Planner- Architect			Medical Equipment Planner
			(Hideaki Harada, Atsushi Nakagawa)	(Naoyuki Minami)	(Toshiyuki Yamamoto)	(Masao Okui)			(Ryoji Yamaguchi)
17	July 05	We			· Facilities design		· Facilities design	Jakarta (Yamamoto, Okui)	
18	July 06	Th			· Facilities design		· Facilities design	Jakarta (Yamamoto, Okui)	
19	July 07	Fr			· JICA Report discussions Depart Jakarta		· Facilities design	On plane (Yamamoto) Jakarta (Imai)	
20	July 08	Sa			Arrive in Narita		· Facilities design	Jakarta (Imai)	
21	July 09	Su					· Facilities design	Jakarta (Imai)	
22	July 10	Mo					· Facilities design	Jakarta (Imai)	
23	July 11	Tu					· Facilities design	Jakarta (Imai)	
24	July 12	We					· Facilities design	Jakarta (Imai)	
25	July 13	Th					· Facilities design	Jakarta (Imai)	
26	July 14	Fr					· Facilities design	Jakarta (Imai)	
27	July 15	Sa					· Facilities design	Jakarta (Imai)	
28	July 16	Su					· Facilities design	Jakarta (Imai)	
29	July 17	Mo					· Facilities design	Jakarta (Imai)	
30	July 18	Tu					· Facilities design	Jakarta (Imai)	
31	July 19	We					· JICA Report discussions Depart Jakarta	On place (Imai)	
32	July 20	Th					Arrive in Narita		

2nd Field Survey

No.	Date	Day	Study Contents					Overnight	
			JICA Leader / Project Coordinator (Hideaki Harada, Atsushi Nakagawa)	Chief Consultant / Facility Reconstruction Plan (Naoyuki Minami)	School Facility Planner / Construction Planner & Cost Estimation (Toshiyuki Yamamoto)	Medical Facilities Planner- Architect (Masao Okui)	Medical Equipment Planner (Ryoji Yamaguchi)		Study Coordinator (Yutaka Imai)
1	July 24	Mo			· Depart Tokyo Arrive in Jakarta	· Depart Tokyo Arrive in Jakarta		Jakarta	
2	July 25	Tu			· Facilities design	· Facilities design		Jakarta	
3	July 26	We			· Facilities design	· Facilities design		Jakarta	
4	July 27	Th			· Facilities design	· Facilities design		Jakarta	
5	July 28	Fr			· Facilities design	· Facilities design		Jakarta	
6	July 29	Sa			· Facilities design	· Facilities design		Jakarta	
7	July 30	Su			· Facilities design	· Facilities design	· Depart Tokyo Arrive in Jakarta	Jakarta	
8	July 31	Mo		· Depart Tokyo Arrive in Jakarta	· Facilities design	· Facilities design		Jakarta	
9	August 1	Tu		· Facilities design · Depart Jakarta Arrive in Yogyakarta	· Facilities design · Depart Jakarta Arrive in Yogyakarta	· Facilities design · Depart Jakarta Arrive in Yogyakarta	· Facilities design · Depart Jakarta Arrive in Yogyakarta	Yogyakarta	
10	August 2	We		· Discussions with Education Office and Health Office, Bantul Regency	· Discussions with Education Office and Health Office Bantul Regency	· Discussions with Health Office Bantul Regency	· Depart Tokyo Arrive in Jakarta	· Discussions with Education Office and Health Office Bantul Regency	Yogyakarta (Yamaguchi: Jakarta)
11	August 3	Th		· Discussions with Yogyakarta Province	· Discussions with Yogyakarta Province	· Discussions with Yogyakarta Province	· Depart Jakarta Arrive in Yogyakarta	· Discussions with Yogyakarta Province	Yogyakarta
12	August 4	Fr		· Discussions with Bantul Regency	· Facilities design	· Facilities design	· Medical equipment study · Depart Jogjakarta Arrive in Jakarta		Yogyakarta (Yamaguchi: Jakarta)
13	August 5	Sa		· Facilities design · Site Survey	· Facilities design	· Facilities design · Site Survey	· Medical equipment study	· Facilities design · Site Survey	Yogyakarta (Yamaguchi: Jakarta)
14	August 6	Su		· Depart Yogyakarta Arrive in Jakarta	· Depart Yogyakarta Arrive in Jakarta	· Depart Yogyakarta Arrive in Jakarta	· Data analysis	· Depart Yogyakarta Arrive in Jakarta	Jakarta
15	August 7	Mo		· Discussion with JICA	· Discussion with JICA	· Discussion with JICA · Depart Jakarta	· Medical equipment study	· Discussion with JICA	Jakarta
16	August 8	Tu		· Discussion with Ministry of Health	· Discussion with Ministry of Health	· Arrive in Narita	· Depart Jakarta	· Facilities design	Jakarta
17	August 9	We		· Discussion with BAPPENAS	· Discussion with BAPPENAS		· Arrive in Narita	· Facilities design	Jakarta
18	August 10	Th			· Facilities design			· Facilities design	Jakarta
19	August 11	Fr		· Discussion with EOJ, JICS	· Discussion with EOJ, JICS			· Discussion with EOJ, JICS	Jakarta
20	August 12	Sa		· Facilities design	· Facilities design			· Facilities design	Jakarta
21	August 13	Su		· Facilities design	· Facilities design			· Facilities design	Jakarta
22	August 14	Mo		· Depart Jakarta	· Facilities design			· Facilities design	Jakarta
23	August 15	Tu		· Arrive in Narita	· Facilities design			· Facilities design	Jakarta
24	August 16	We			· Facilities design			· Facilities design	Jakarta
25	August 17	Th			· Facilities design			· Facilities design	Jakarta
26	August 18	Fr			· Facilities design			· Facilities design	Jakarta
27	August 19	Sa			· Facilities design			· Facilities design	Jakarta
28	August 20	Su			· Facilities design			· Facilities design	Jakarta
29	August 21	Mo			· Facilities design, T/D			· Facilities design	Jakarta
30	August 22	Tu			· Facilities design, T/D			· Facilities design	Jakarta
31	August 23	We			· Facilities design, T/D			· Facilities design	Jakarta
32	August 24	Th			· Facilities design, T/D			· Facilities design	Jakarta
33	August 25	Fr			· Facilities design, T/D			· Facilities design	Jakarta
34	August 26	Sa			· Depart Jakarta			· Facilities design	Jakarta
35	August 27	Su			· Arrive in Narita			· Facilities design	Jakarta
36	August 28	Mo						· Facilities design	Jakarta
37	August 29	Tu						· Depart Jakarta	On place
38	August 30	We						· Arrive in Narita	-

Appendix 3 List of Parties Concerned in the Recipient Country

Organization	Position	Name
National Development Planning Agency (BAPPEDA)	Deputy of Local Autonomy and Regional Development	Dr. Ir. Suprayoga Hadi, MSP
	Director of Bilateral Foreign Cooperation	Mr. Ceppie Sumadilaga, Ph.D
Ministry of Education	Secretary, Director General of Primary and Secondary Education	Mr. Bambang Indriyanto
Ministry of Health	Secretary, Directorate General of Public Health	Dr. Bambang Sardjono, MPH
Regional Planning Board (BAPEDA), Yogyakarta Special Province	Head	Mr. Bayudono
	KA. BID.	Ms. Fenti
Cooperation Bureau, Yogyakarta Special Province	Head of Cooperation Bureau,	Ir. Azharudin AR
Education Office, Yogyakarta Province	Head of Education Office	Drs. Sugito, M.Si
Health Office, Yogyakarta Province	Head of Program Department	Dra. Siti Munawaroh APT
Public Works Office, Yogyakarta Province	Head of Public Works Office	Mr. Tri Herjun
Regent of Bantul Regency	Regent	Mr. Idham Samawi
Planning Board (BAPEDA), Bantul Regency	Head of BAPEDA	Drs. Suyoto Hs. MSI, MMA
	Head of Infrastructure Department	Mr. Widodo
Education Office, Bantul Regency	Head of Education Office	Mr. Sudarman
	Head of Department of Primary/Secondary Education	Mr. Totok Sudarto
	Department of Primary/Secondary Education	Ms. Anik Supriyati
	Department of Primary/Secondary Education	Mr. Sunardi
	Head of Department of Planning	Mr. Bobot Arifin
	Head of Administration	Mr. Suprianto
	Department of Facilities	Ms. Anik Supriyati
	SMP2 Pleret Principal	Drs. Yasumuri
	SMP3 Pleret Principal	Mr. Suparman
	SMP1 Imogiri Principal	Mr. Mardyudi
	SMP2 Pajangan Principal	Drs. Sumarwoto
	SMP2 Bantul Principal	Mr. Kamidi
	SMP4 Pandak Principal	Drs. Hari Purnomo
	SMP1 Kretek Principal	Mr. Bambang Sri Riyadi
	SD Pungkran Principal	Dra. Ngatini
SD Ngasinan Principal	Drs. Mujiyono	
Health Office, Bantul Regency	Head of Health Office	Ms. Siti Nur Zainab
	Head of Department of Planning and Information	Mr. Agus Budirahardja
	Head of Puskesmas Jetis 1	Dr. Agung Baskoro
	Puskesmas Jetis 1	Drg. Pertiwi W S
	Puskesmas Jetis 1	Mr. Dwi Asmunikasih
	Head of Puskesmas Jetis 2	Mr. Agus Sedyarto
	Puskesmas Jetis 2	Mr. Hadi Pranoto
	Puskesmas Jetis 2	Mr. Sudarsono
	Head of Puskesmas Sewon2	Ms. Murtini
	Puskesmas Sewon2	Mr. Agus Sedyarto
	Head of Puskesmas Pleret	Drg. Nooryati
Head of Puskesmas Imogiri 1	Dr. Lucia Sri Rejeki	

Organization	Position	Name
Public Works Office (DPU), Bantul Regency	Technical Section	Mr. Suprihana
	DINAS P & K	Mr. Heru Purwanto
Social Office, Bantul Regency	Head of Social Office	Mr. Mahmudi
Embassy of Japan	Counsellor	Mr. Koji Yonetani
	Secocnd Secretary	Mr. Takeshi Muronaga
JICA Indonesia Office	Resident Representative	Mr. Keiichi Kato
	Deputy Resident Representative	Mr. Shinji Totsuka
	Deputy Resident Representative	Mr. Nobuhiko Hanazato
	Assistant Resident Representative	Mr. Kozo Nagami
	Assistant Resident Representative	Mr. Daisuke Ueda
	Assistant Resident Representative	Mr. Nobuo Iwai
	Assistant Resident Representative	Mr. Jotaro Tateyama
	Assistant Resident Representative	Mr. Osamu Yamada
JICS Indonesia Office	Project Manager	Mr. Shoji Hasegawa
	Project Management Department Yogyakarta Office	Mr. Kazunori Ogaguchi
		Ms. Hartini
Needs Assessment Study Team	Pacific Consultants International	Mr. Kimio Takeya
Emekon Prakasita	Project Manager	Mr. Faisal Nur

Appendix 4 Request Letter and Minutes of Understanding (M/U)



BUPATI BANTUL

Jln. Robert Wolter Monginsidi Bantul 55711

Nomor : 360 / 2594
Lampiran : 1 lb
Perihal : *Rehabilitasi Prasarana Pendidikan Tingkat SMP*

Bantul, 21 Juni 2006

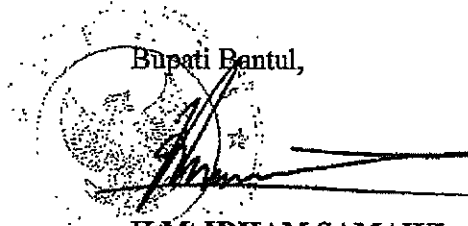
Kepada
Yth Menteri Pendidikan Nasional
di Jakarta

Berdasarkan atas hasil diskusi dengan JICA pada tanggal 8 Juni 2006 diperoleh kesepakatan bahwa, pihak JICA akan membantu pembangunan kembali prasarana pendidikan yang rusak akibat gempa bumi di Kabupaten Bantul.

Sehubungan dengan hal tersebut, maka kami mengajukan permohonan rehabilitasi dan pembangunan kembali prasarana pendidikan sebagai berikut :

No	Nama Sekolah	Klasifikasi Kerusakan
1	SMP Negeri 2 Pleret	Rusak berat
2	SMP Negeri 3 Pleret	Rusak berat (robok)
3	SMP Negeri 1 Imogiri	Rusak berat
4	SMP Negeri 2 Pajangan	Rusak berat
5	SMP Negeri 2 Bantul	Rusak berat
6	SMP Negeri 4 Pandak	Rusak berat
7	SMP Negeri 1 Kretek	Rusak berat

Demikian, atas perhatian dan kerja sama yang baik diucapkan terima kasih.

Bupati Bantul,

H.M. IDHAM SAMAWI

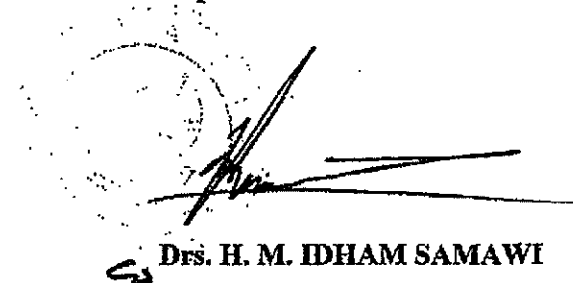
Tembusan disampaikan kepada Yth :

1. Direktur Regional II BAPPENAS (Dr.Ir.Suprayogo Hadi, MSP.);
2. Direktur Jenderal Pendidikan Menengah DEPDIKNAS;
3. Kedutaan Besar Jepang di Jakarta;
4. JICA di Jakarta;
5. Setditjen Pendidikan Menengah DEPDIKNAS;
6. Gubernur Prop. DIY;
7. Ka.Bappeda Prop. DIY;

**DATA KONDISI SARANA & PRASARANA
PASCA BENCANA ALAM DI KABUPATEN BANTUL**

NO	Lokasi	Kec	Jumlah Rombel	Ruang Kelas					Ruang Penunjang Lainnya					Ruang Lain-lain				
				Jml	Hancur	RB	RS	RR	Jml	Hancur	RB	RS	RR	Jml	Hancur	RB	RS	RR
1	SMP N 1 Imogiri	Imogiri	18	18	4	4	0	10	14	3	6	1	4	15	0	13	0	0
2	SMP N 2 Pleret	Pleret	18	18	0	12	6	0	6	0	2	4	0	2	0	1	1	0
3	SMP N 3 Pleret	Pleret	9	9	0	0	9	0	5	2	3	0	0	18	1	15	2	0
4	SMP N 2 Bantul	Bantul	13	13	4	0	3	0	10	7	1	0	2	11	10	0	1	0
5	SMP N 2 Pajangan	Pajangan	18	18	0	12	6	0	3	0	2	1	0	6	1	5	0	0
6	SMP N 4 Pandak	Pandak	9	11	0	11	0	0	10	0	7	2	1	5	0	5	0	0
7	SMP N 1 Kretek	Kretek	12	12	0	6	2	4	5	0	0	3	2	10	0	2	2	4
	JUMLAH		97	99	8	45	26	14	53	12	21	11	9	67	12	41	6	4

Bantul,
Bupati Bantul



Drs. H. M. IDHAM SAMAWI



PEMERINTAH KABUPATEN BANTUL
SEKRETARIAT DAERAH

Jln. Robert Wolter Monginsidi Bantul 55711

Nomor : 425/2710

Bantul, 1 Juli 2006

Lampiran :

Perihal :

Rehabilitasi Prasarana
Pendidikan Tingkat SD

Kepada :

Yth. Menteri Pendidikan Nasional
di


Jakarta

Berdasarkan atas hasil diskusi dengan JICA pada tanggal 30 Juni 2006 diperoleh kesepakatan bahwa, pihak JICA akan membantu pembangunan kembali prasarana pendidikan yang rusak akibat gempa bumi di Kabupaten Bantul.

Sehubungan dengan hal tersebut, kami setuju apabila JICA akan merehabilitasi dan membangun kembali prasarana pendidikan sebagai berikut :

No	Nama Sekolah	Klasifikasi Kerusakan
1	SD Ngasinan Imogiri	Rusak berat
2	SD Pungkuran Pleret	Rusak berat (roboh)

Demikian, atas perhatian dan kerja sama yang baik diucapkan terima kasih.

Rupati Bantul
Sekretaris Daerah Kabupaten Bantul

Drs. Endang Sudarto KD, B.Sc. MMA
NIP 490017858

Tembusan disampaikan kepada Yth :

1. Direktur Regional II BAPPENAS (Dr. Ir. Suprayogo Hadi, MSP.);
2. Direktur Jenderal Pendidikan Menengah DEPDIKNAS;
3. Kedutaan Besar Jepang di Jakarta;
4. JICA di Jakarta;
5. Setditjen Pendidikan Menengah DEPDIKNAS;
6. Gubernur Prop. DIY;
7. Ka. Bappeda Prop. DIY;
8. Kepala Biro Kerjasama Setda Prop. DIY;
9. Peninggal.



BUPATI BANTUL

Jln. Robert Wolter Monginsidi – 55711

Kantor : (0274) 367 770

Rumah : (0274) 367 333

Nomor : 360/2545 A
Perihal : Rehabilitasi Puskesmas

Bantul, 21 Juni 2006

Kepada
Yth. Menteri Kesehatan
Di
JAKARTA

Menyusuli surat kami No. 360/2545 tanggal 14 Juni 2006 perihal seperti pada pokok surat. Berdasarkan atas hasil diskusi dengan JICA pada tanggal 21 Juni 2006 diperoleh kesepakatan baru bahwa, pihak JICA akan membantu pembangunan kembali prasarana kesehatan yang rusak akibat gempa bumi di Kabupaten Bantul, dengan lima (5) prioritas sebagai berikut.

No	Nama Puskesmas	Klasifikasi Kerusakan
1.	Puskesmas Jetis I	Rusak Berat
2.	Puskesmas Jetis II	Rusak Berat
3.	Puskesmas Sewon II	Rusak Berat
4.	Puskesmas Pleret	Rusak Berat
5.	Puskesmas Imogiri I	Rusak Berat

Seandainya masih tersisa dana, maka daftar Puskesmas berikut dapat dipertimbangkan untuk dibangun kembali yaitu :


No	Nama Puskesmas	Klasifikasi Kerusakan
1.	Puskesmas Imogiri II	Rusak Berat
2.	Puskesmas Dlingo I	Rusak Berat
3.	Puskesmas Dlingo II	Rusak Berat
4.	Puskesmas Banguntapan II	Rusak Berat
5.	Puskesmas Pandak I	Rusak Berat
6.	Puskesmas Bambanglipuro	Rusak Berat
7.	Puskesmas Pajangan	Rusak Berat
8.	Puskesmas Bantul I	Rusak Berat

Sebagai tambahan informasi bahwa Puskesmas rusak berat ada 15 tetapi 2 (dua) diantaranya telah ditangani oleh :

1. Puskesmas Piyungan rusak berat telah ditangani oleh PT. INCO/UNHAS;
2. Puskesmas Pundong rusak berat ditangani oleh JRCS.

Demikian agar menjadikan periksa dan atas bantuannya diucapkan terima kasih.

Bupati Bantul



DRS. H. M. IDHAM SAMAWI

Tembusan disampaikan kepada Yth :

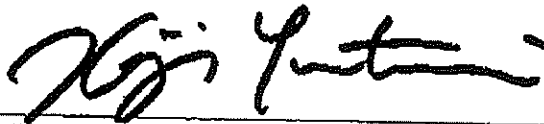
1. Direktur Regional II BAPPENAS (Dr. Ir. Suprayogo Hadi, MSP.);
2. Direktur Jenderal Kesehatan Masyarakat DEPKES;
3. Kedutaan Besar Jepang di Jakarta;
4. JICA di Jakarta;
5. Setditjen Kesehatan Masyarakat DEPKES;
6. Gubernur Prop. DIY;
7. Ka. Bapeda Prop DIY;
8. Kepala Biro Kerjasama Setda Prop. DIY;
9. Kepala Dinas Kesehatan Propinsi DIY;
10. Pertinggal.

MINUTES OF UNDERSTANDING
ON
THE OUTLINE DESIGN STUDY
ON
THE PROJECT FOR THE DISASTER RECONSTRUCTION OF
BASIC HUMAN NEEDS RELATED FACILITIES AFFECTED BY THE INDONESIA EARTHQUAKE

In order to reconstruct the facilities such as schools, health centers which are affected by the great earthquake in the Provinces of D. I. Yogyakarta and Central Java, the Republic of Indonesia (hereinafter referred to as "Indonesia") under "Disaster Reconstruction Grant Aid (Program Type)" scheme, the Government of Japan decided to conduct an Outline Design Study (hereinafter referred to as "the Study") on the Project for the Disaster Reconstruction of Basic Human Needs (BHN) Related Facilities Affected by the Indonesian Earthquake (hereinafter referred to as "the Project") and entrusted the Study to the Japan International Cooperation Agency (hereinafter referred to as "JICA").

Along with a series of discussions and field survey carried out by the JICA Outline Design Study Team (hereinafter referred to as "the Team"), and based on the follow-up meetings, all parties concerned confirmed the main items described in the attached document.

Jakarta, June 28, 2006



YONETANI Koji
Councillor for Development
Embassy of Japan
In Indonesia



KATO Keiichi
Resident Representative
Japan International Cooperation Agency
Indonesia Office

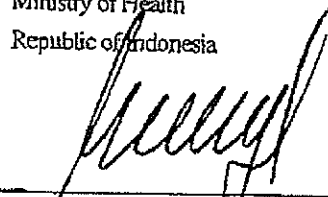


Dr. Suprayoga
Director for Regional
Deputy for Regional and Autonomy Development
National Development Planning Agency
Republic of Indonesia

Witnessed by :



Bambang Sardjono
Secretary to Director General of Public Health
Ministry of Health
Republic of Indonesia



Bambang Indriyanto
Secretary to Director General of Management of
Primary and Secondary Education
Ministry of National Education
Republic of Indonesia

Copy of this Minutes of Understanding will be shared with following concerned government organizations:

State Secretary

Mr. Suprpto MM, Head of Foreign Technical Cooperation

Ministry of Foreign Affairs

Mr. Yuri O. Thamrin, Director for East Asia and Pacific

Ministry of Finance

Dr. Agus Supriyanto, Director for Loan and Grant Administration

National Development Planning Agency

Dr. Lukita Dinarsyah Tuwo, Deputy for Development Fund

Dr. Luky Eko Wuryanto, Deputy for Regional Development

Coordinating Ministry for Economic Affairs

Dr. Bayu Krisna Murti, Deputy Coordinating Minister

Coordinating Ministry for People's Welfare

Drs. Sutedjo Yuwono, Executive Secretary

BAKORNAS

Mr. Indrawadi Tamin, Executive Secretary

Ministry of National Education

Prof. Dr. Ir. Dodi Nandika M.S., Secretary General for Ministry of National Education

Ministry of Health

Dr. Syaffi Ahmad MPH, Secretary General for Ministry of Health

Special Province of Yogyakarta (DIY)

His Royal Highness Sri Sultan Hamengkubuwono IX, the Governor of Special Province of Yogyakarta

Drs. H.M.Idham Samawi, the Bupati of Bantul

ATTACHMENT

1. Objectives of the Project

The objectives of the Project is to reconstruct BHN (Basic Human Needs) related facilities such as schools and health centers (*Puskemas*), which were affected and destroyed by the Yogyakarta & Central Java Earthquake occurred in May 27, 2006.

2. Sites of the Project

The sites of the Project are located in Bantul District (*Kabupaten*) in the Special Province of Yogyakarta (*Daerah Istimewa Yogyakarta / DIY*).

3. Responsible and Implementing Organization

The Responsible Organization is the National Development Planning Agency (BAPPENAS), that also as a coordinating body in relation with other government organization concerned such as Ministry of National Education, Ministry of Health and so on.

The Implementing Organization is Education Office and Health Office of Bantul District, DIY

4. Items requested by the Government of Indonesia

Based on the discussion with the Team, the Government of Indonesia finally requested the items for reconstruction of schools and health centers as listed in ANNEX 1.

JICA will further assess the appropriateness of the Project and report findings of the study to the Government of Japan. The components of the Project will be finalized after the analysis by the Team in Japan. In principle, those BHN Related Facilities will be designed to recover the functions considering the resistance against earthquakes in Indonesia.

5. Schedule of the Study

5-1. The consultant members of the Team will continue further studies in Indonesia until July 4, 2006.

5-2. The Team will complete the Outline Design at the beginning of July.

5-3. The Team will visit Indonesia again in the end of July to explain the draft Outline Design Study Report to the Indonesian Side.

5-4. The Team will prepare the Draft Tender Documents and the Outline Design Study Report by the end of August.

6. Consultative Committee

Both Indonesian and Japanese parties agreed to establish the Consultative Committee for smooth implementation of the Project. The Structure of the Committee is described in ANNEX 2.

7. Japan's "Disaster Reconstruction Grant Aid" scheme

The Indonesian side understood the Japan's "Disaster Reconstruction Grant Aid (Program Type)" scheme and

the necessary measures to be taken by the Government of Indonesia as explained by the Team and described in ANNEX 3 and ANNEX 4.

8. Other Relevant Issues

- 8-1. For the implementation of the Project, the Outputs of the Study such as Drawings, Specifications, Draft Tender Documents and other related documents (the Outputs) will be handed over to the Indonesian side. Both parties confirmed that the Outputs and any other documents in the Study shall not be disclosed to third party before the completion of the tendering.
- 8-2. The Education Office and Health Office of Bantul District on behalf of the Indonesian side shall review and complete the tender documents and drawings prepared as a result of the Study.
- 8-3. The Indonesian side shall make necessary coordination with other donors, NGOs and other concerned organizations to avoid duplication of activities with this Project.
- 8-4. The Indonesian side agreed to provide information necessary for the Study such as reconstruction plan, assistances of other donors, etc.
- 8-5. The Indonesian side shall provide security for all concerned Japanese nationals working for the Project, if deemed necessary.
- 8-6. The Indonesian side shall manage and maintain the facilities reconstructed under the Project.
- 8-7. Environmental Impact Assessment (EIA) will be implemented by the Indonesian side according to regulations of Indonesia if necessary.
- 8-8. The Indonesian side agreed to publicize the Project in case of implementation.

Reconstruction of Junior Secondary School in Bantul District, DIY

- 1 SMPN2 Pleret
- 2 SMPN3 Pleret
- 3 SMPN1 Imogiri
- 4 SMPN2 Pajangan
- 5 SMPN2 Bantul
- 6 SMPN4 Pandak
- 7 SMPN1 Kretek

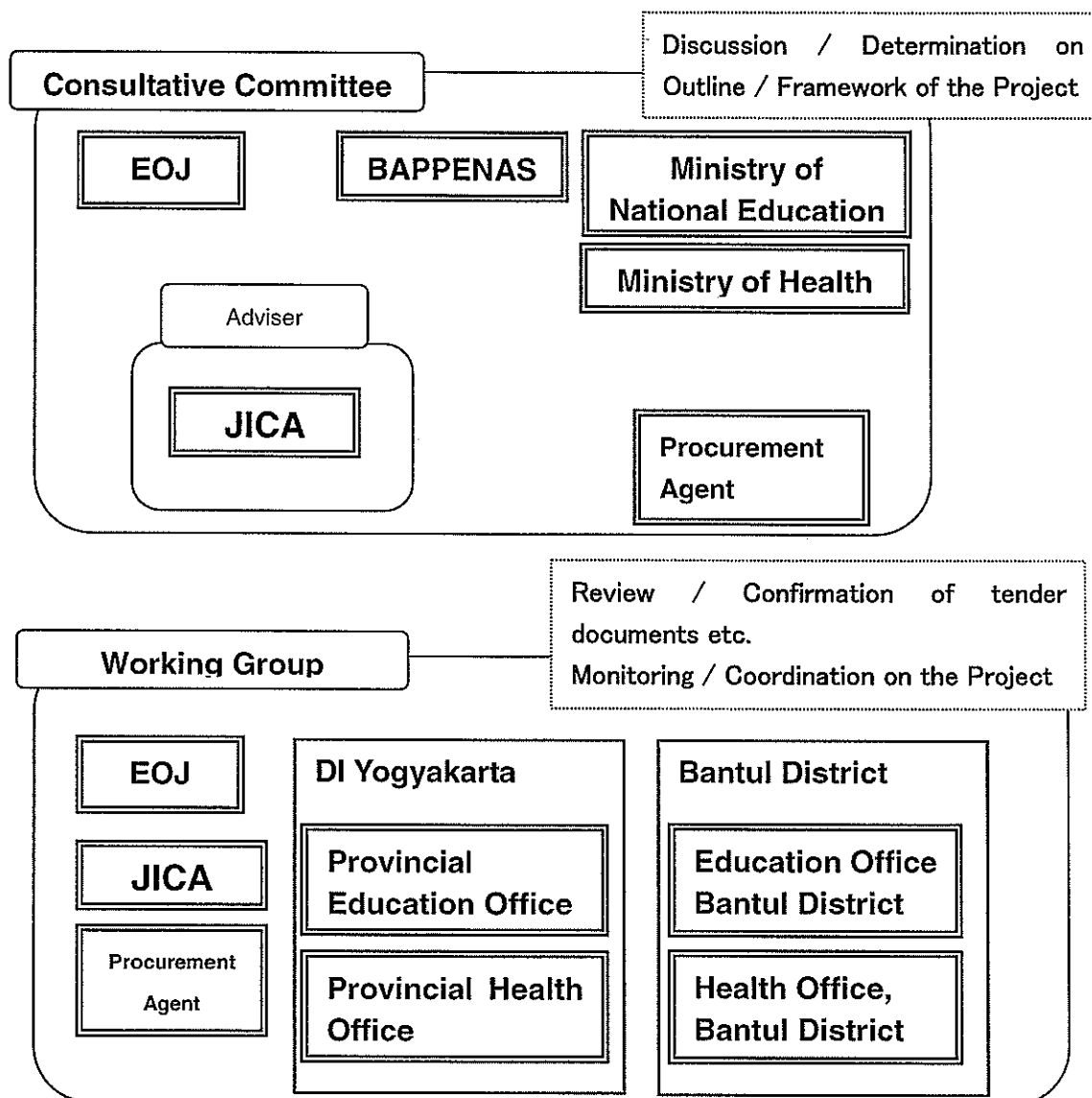
Reconstruction of Elementary School in Bantul District, DIY

- 1 SD Ngasinan
- 2 SD Pungkuran

Reconstruction of Health Center in Bantul District, DIY

- 1 Puskesmas Jetis 1
- 2 Puskesmas Jetis 2
- 3 Puskesmas Sewon 2
- 4 Puskesmas Pleret
- 5 Puskesmas Imogiri 1

2. Implementation Structure (Consultative Committee)



JAPAN'S DISASTER RECONSTRUCTION GRANT AID (PROGRAM TYPE)

The Grant Aid Scheme provides a recipient country with non-reimbursable funds to procure the facilities, equipment and services (engineering services and transportation of the products, etc.) under principles in accordance with the relevant laws and regulations of Japan.. Grant Aid for Disaster Prevention and Reconstruction is a one of the several types of the scheme designed to assist disaster affected countries in disaster prevention and / or disaster reconstruction. The Grant Aid is not supplied through the donation of materials as such.

The scheme is divided into categories as follows;

- Grant Aid for Disaster Prevention (Project Type)
- Grant Aid for Disaster Prevention (Program Type)
- Grant Aid for Disaster Reconstruction (Project Type)
- Grant Aid for Disaster Reconstruction (Program Type)

1. Procedures of Grant Aid for Disaster Reconstruction (Program Type)

Japan's Grant Aid for Disaster Reconstruction (Program Type) is executed through the following procedures.

Application	(Request made by the recipient country)
Study	(Outline Design Study conducted by JICA)
Appraisal & Approval	(Appraisal by the Government of Japan and Approval by the Cabinet)
Determination of	(The Note exchanged between the Governments of Japan and recipient
Implementation	country)

Firstly, the application or request for a Grant Aid project submitted by a recipient country is examined by the Government of Japan (the Ministry of Foreign Affairs) to determine whether or not it is eligible for Grant Aid. If the request is deemed appropriate, the Government of Japan assigns JICA (Japan International Cooperation Agency) to conduct a study on the request. The request can be received at diplomatic mission of Japan when necessary.

Secondly, JICA conducts the study (Outline Design Study) using (a) Japanese consulting firm(s).

Thirdly, the Government of Japan appraises the project to see whether or not it is suitable for Japan's Grant Aid Scheme, based on the Outline Design Study conducted by JICA, and the results are then submitted to the Cabinet for approval.

Fourthly, the project, once approved by the Cabinet, becomes official with the Exchange of Notes (E/N) signed by the Governments of Japan and the recipient country.

Finally, for the prompt and proper implementation of the project, procurement management agency will be introduced for facility construction projects. Under the contract with the recipient

country, the procurement management agent will act as a proxy of the recipient country to prepare tender, contract and so on.

2. Outline Design Study

(1) Contents of the study

The aim of the Outline Design Study (hereafter referred to as "the Study") conducted by JICA on a requested project (hereafter referred to as "the Project") is to provide a basic document necessary for the appraisal of the Project by the Government of Japan. The contents of the Study are as follows:

- Confirmation of the background, objectives, and benefits of the Project and also institutional capacity of agencies concerned of the recipient country necessary for the Project's implementation.
- Evaluation of the appropriateness of the Project to be implemented under the Grant Aid Scheme from a technical, social and economic point of view.
- Confirmation of items agreed on by both parties concerning the basic concept of the Project.
- Preparation of a outline design of the Project.
- Estimation of costs of the Project.

The contents of the original request are not necessarily approved in their initial form as the contents of the Grant Aid project. The Outline Design of the Project is confirmed considering the guidelines of the Japan's Grant Aid Scheme.

The Government of Japan requests the Government of the recipient country to take whatever measures are necessary to ensure its self-reliance in the implementation of the Project. Such measures must be guaranteed even though they may fall outside of the jurisdiction of the organization in the recipient country actually implementing the Project. Therefore, the implementation of the Project is confirmed by all relevant organizations of the recipient country through the Minutes of Discussions.

(2) Selection of Consultants

For smooth implementation of the Study, JICA uses (a) registered consulting firm(s). JICA selects (a) firm(s) based on proposals submitted by interested firms. The firm(s) selected carry(ies) out an Outline Design Study and write(s) a report, based upon terms of reference set by JICA.

3. Japan's Grant Aid for Disaster Reconstruction Scheme

(1) Exchange of Notes (E/N)

Japan's Grant Aid for Disaster Reconstruction is extended in accordance with the Notes exchanged by the two Governments concerned, in which the objectives of the Project, period of execution, conditions and amount of the Grant Aid, etc., are confirmed.

(2) Contract with Procurement Agent

The recipient country will conclude an Agent Agreement with the designated Procurement Agent in order to secure smooth implementation of the Project.

(3) "The period of the Grant Aid for Disaster Reconstruction (Program Type)" means the one fiscal year, which the Cabinet approves, the Project for. Within the fiscal year, all procedures such as exchanging of the Notes, concluding contracts with (a) consultant firm(s) and (a) contractor(s) and final payment to them must be completed. However, in case of delays in delivery, installation or construction due to unforeseen factors such as national disaster, the period of the Grant Aid can be further extended for a maximum of one fiscal year at most by mutual agreement between the two Governments.

(4) Under the Grant Aid for Disaster Reconstruction, in principle, products and services including transport or those can be purchased from all countries and areas.

(5) Necessity of "Verification"

The Government of recipient country or its designated authority will conclude contracts denominated in Japanese yen with procurement management agent. Those contracts shall be verified by the Government of Japan. This "Verification" is deemed necessary to secure accountability to Japanese taxpayers.

(6) Undertakings required of the Government of the Recipient Country

In the implementation of the Grant Aid Project, the recipient country is required to undertake such necessary measures as the following:

- a) To use the Grant and its accrued interest for purchasing products and services within a period of twelve months after the date of execution of the Grant,
- b) To ensure prompt excursion for unloading, customs clearance at the port of disembarkation and internal transportation of the products purchased under the Grant Aid,
- c) To exempt from customs duties, internal taxes and other fiscal levies which will be imposed in the recipient country with respect to the supply of the products and services under the Verified Contracts,
- d) To use the Grant and its accrued interest properly and efficiency for disaster reconstruction.
- e) To accord Japanese or other nationals, whose services may be required in connection with the supply of the products and services under the Verified contracts, such facilities as may be necessary for their entry into the recipient country and stay therein for the performance of their work,
- f) To present to the Government of Japan a report prepared in written form acceptable to the Government of Japan on the transactions on the Account together with copies of contracts, vouchers and other documents concerning the relevant transactions without delay when the Grant and its accrued interest are completely drawn or when the period for the use of the Grant and its accrued interest expires or upon request by the Government of Japan,
- g) To secure land necessary for the sites of the Project and to clear, level and reclaim the land prior to commencement of the construction and
- h) To clear the sites and provide facilities for the distribution of electricity, water supply and drainage and other incidental facilities in and around the sites when they are deemed necessary for the Project as a result of the Study.

(7) "Proper Use"

The recipient country is required to maintain and use the facilities constructed and the equipment purchased under the Grant Aid properly and effectively and to assign staff necessary for this operation and maintenance as well as to bear all the expenses other than those covered by the Grant Aid.

(8) "Re-export"

The products purchased under the Grant Aid should not be re-exported from the recipient country.

(9) Banking Arrangements (B/A)

a) The Government of the recipient country or its designated authority should open an account in the name of the Government of the recipient country in a bank in Japan (hereinafter referred to as "the Bank"). The Government of Japan will execute the Grant Aid by making payment in Japanese yen to cover the obligations incurred by the Government of the recipient country or its designated authority under the verified contracts.

b) The payments will be made when payment requests are presented by the Bank to the Government of Japan under an Authorization to Pay (A/P) issued by the Government of recipient country or its designated authority.

10) Authorization to Pay (A/P)

The Government of the recipient country should bear an advising commission of an Authorization to Pay and payment commission to the Bank.

(End)

Major Undertaking to be taken by Each Government

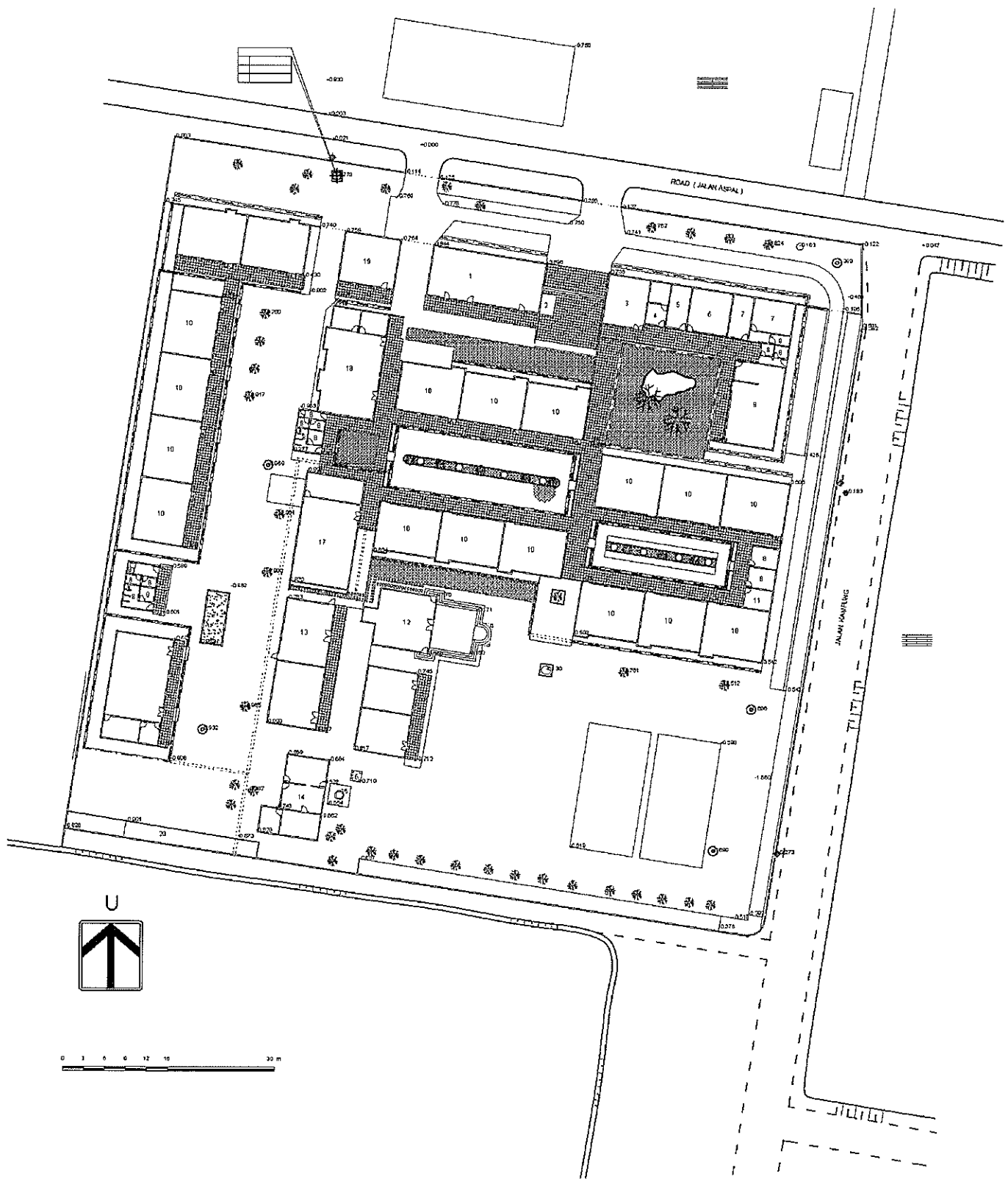
No.	Items	Covered by Grant Aid	Covered by Recipient	Discussed
1	To secure land		●	
2	To Clear, level and reclaim the site when needed		●	●
3	To construct gates and fences in and around the site		●	●
4	To construct the parking lot	●		
5	To construct roads		●	
6	To construct the buildings	●		
7	To provide facilities for the distribution of electricity, water supply, drainage and other incidental facilities			
	1) Electricity			
	a. The distributing line to the site		●	
	b. The drop wiring and internal wiring within the site	●		
	c. The main circuit breaker and transformer	●		
	2) Water supply			
	a. The city water distribution main to the site		●	
	b. The supply system within the site (receiving and elevated tanks)	●		
	3) Drainage			
	a. The city drainage main (for storm, sewer and others) to the site		●	
	b. The drainage system (for toilet sewer, ordinary waste, storm drainage and others) within the site	●		
	4) Gas supply			
	a. The city gas main to the site		●	
	b. The gas supply system within the site	●		
	5) Telephone system			
	a. The telephone trunk line to the main distribution frame/panel (MDF) of the building		●	
	b. The MDF and the extension after the frame/panel	●		
	6) Furniture and Equipment			
	a. General furniture		●	
	b. Project Equipment	●		
8	To bear the commissions to a bank in Japan for the banking services based upon the Banking Arrangement		●	
9	To ensure unloading and customs clearance at port of disembarkation in recipient country			
	1) Marine (Air) transportation of the products to the recipient country	●		
	2) Tax exemption and custom clearance of the products at the port of disembarkation		●	

No.	Items	Covered by GrantAid	Covered by Recipient	Discussed
	3) Internal transportation from port of disembarkation to the project site	(●)	(●)	
10	To accord any nationals whose services may be required in connection with the supply of the products and the services under the verified contract such facilities as may be necessary for their entry into the recipient country and stay therein for the performance of their work.		●	
11	To exempt any nationals from customs duties, internal taxes and other fiscal levies which may be imposed in the recipient country with respect to the supply of the products and services under the verified contract.		●	
12	To maintain and use properly and effectively the facilities constructed and equipment provided under the Grant		●	
13	To bear all the expenses , other than those to be borne by the Grant, necessary for construction of the facilities as well as for the transportation and installation of the equipment		●	

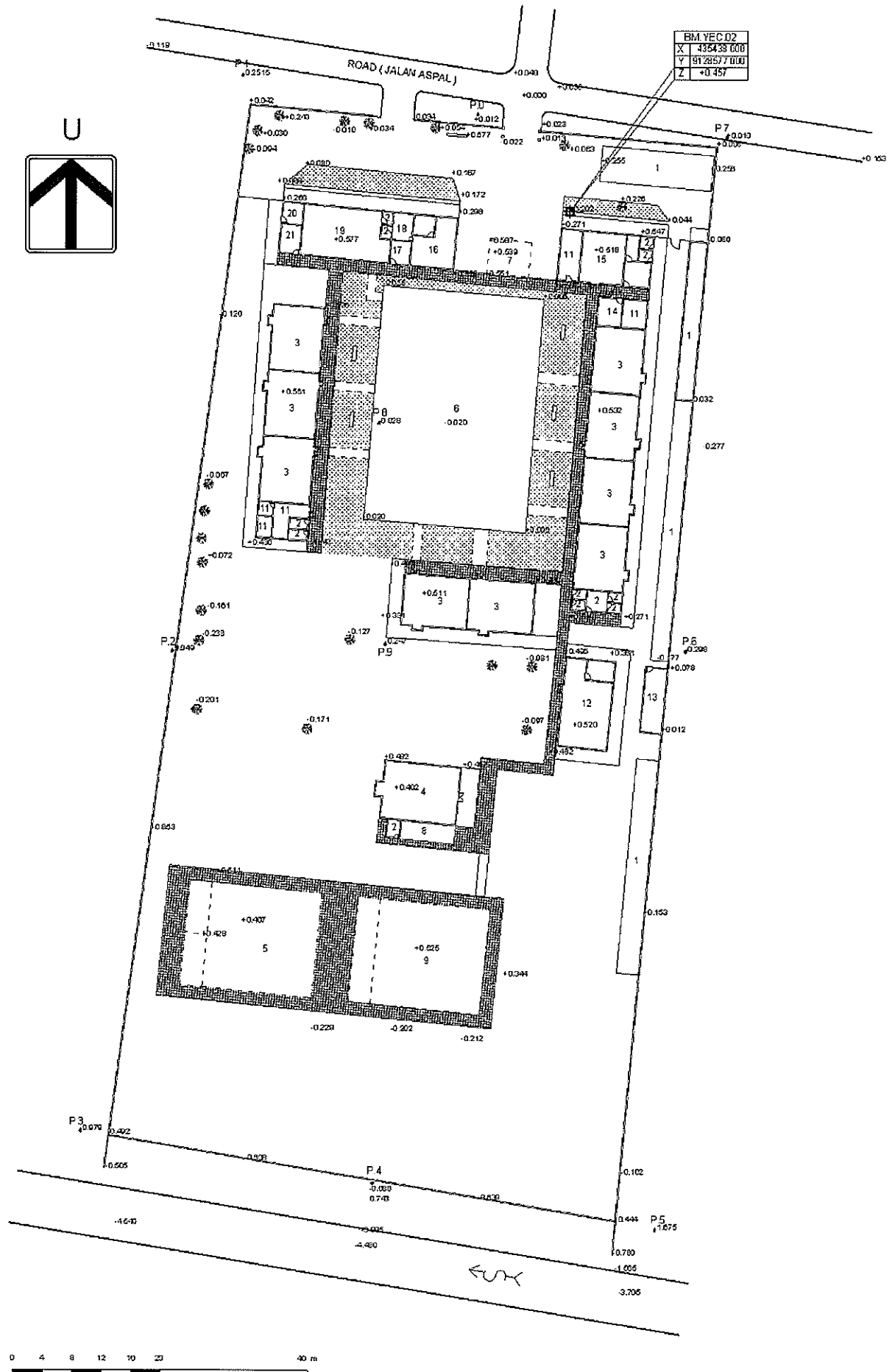
Appendix 5 References

No.	Name of Reference	Form book, video, map, photo, etc.	Original / Copy	Name of issuing government office	Year of Publication
1	DAFTAR PERALATAN PUSKESMAS DALAM GAMBAR, TAHUN 2001	Book	Copy	DIRECTORAT JENDERAL BINA KESEHATAN MASYARAKAT	2001
2	PEDOMAN KERJA PUSKESMAS JILID I	Book	Copy	DEPARTEMEN KESEHATAN RI	1997/1998
3	BUKU KESEHATAN IBU DAN ANAK	Book	Copy	DEPARTEMEN KESEHATAN RI	2000
4	KEPUTUSAN MENTERI KESEHATAN REPUBLIK INDONESIA KEBIJAKAN DASAR PUSAT KESEHATAN MASYARAKAT	Book	Copy	DEPARTEMEN KESEHATAN RI	2004

Appendix 6 Topographic Map of Project Sites (After the Earthquake)

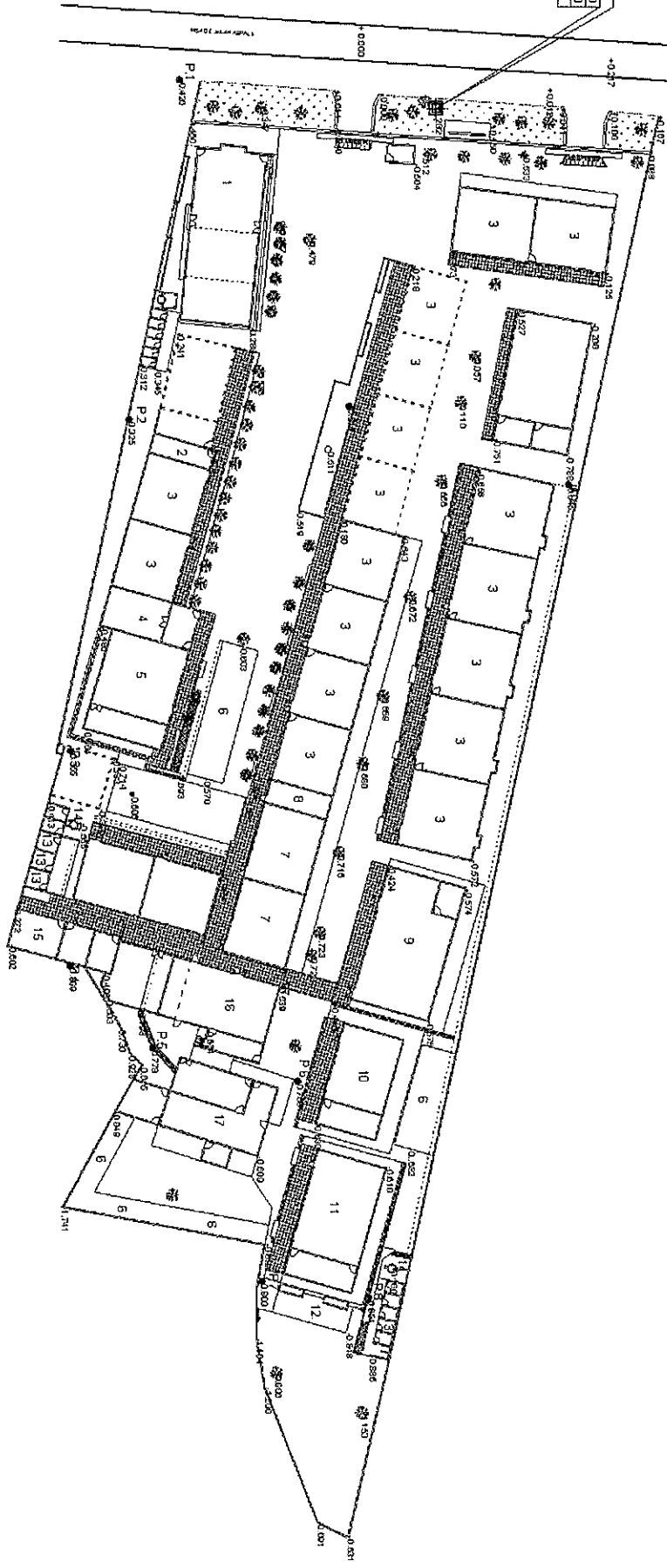
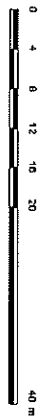


TOPOGRAPHIC MAP (AFTER THE EARTHQUAKE)
PLERET 2 SECONDARY SCHOOL

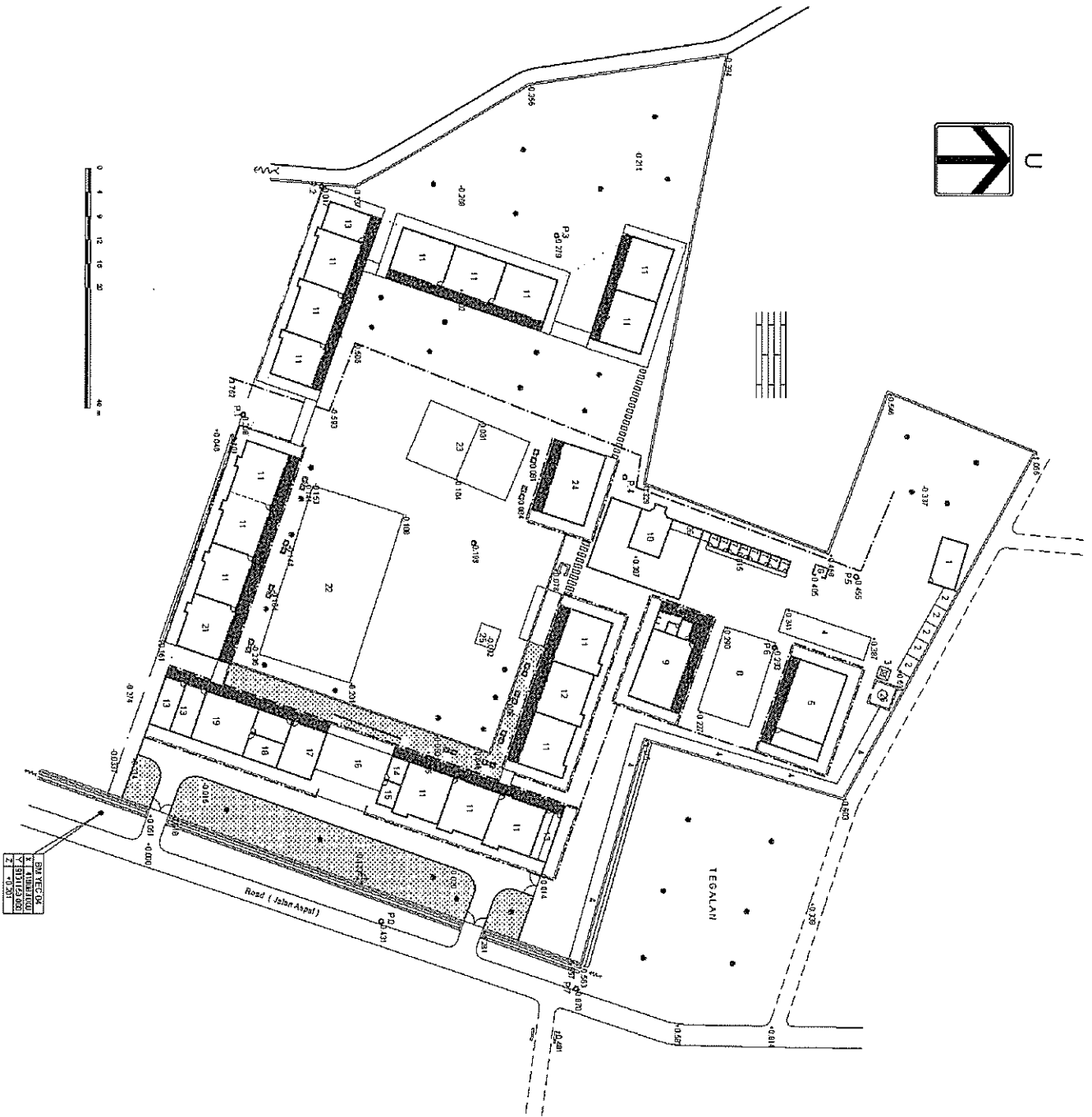


TOPOGRAPHIC MAP (AFTER THE EARTHQUAKE)
PLERET 3 SECONDARY SCHOOL

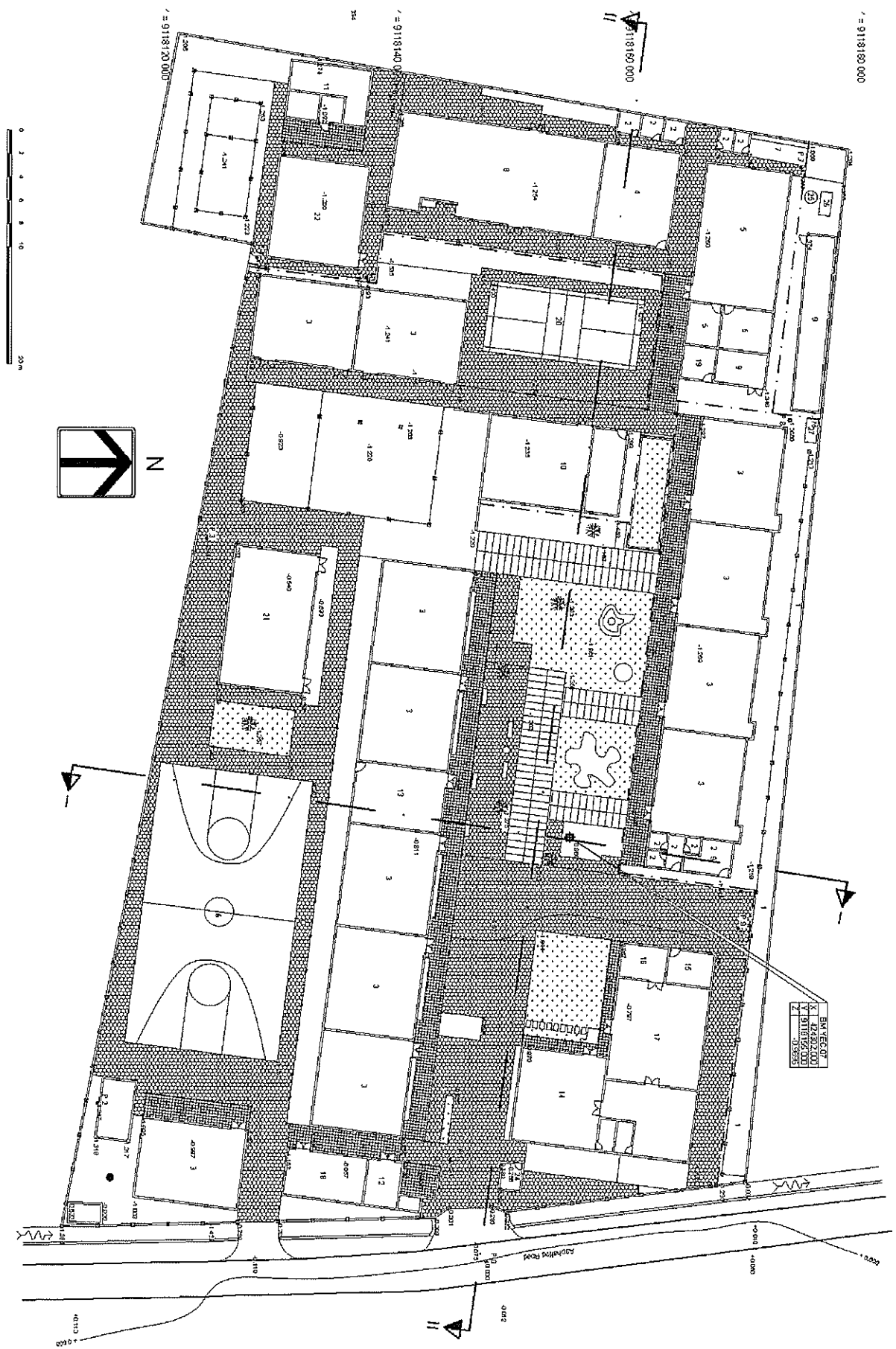
BM YEG 03
X 431981.000
Y 912423.000
Z -0.360



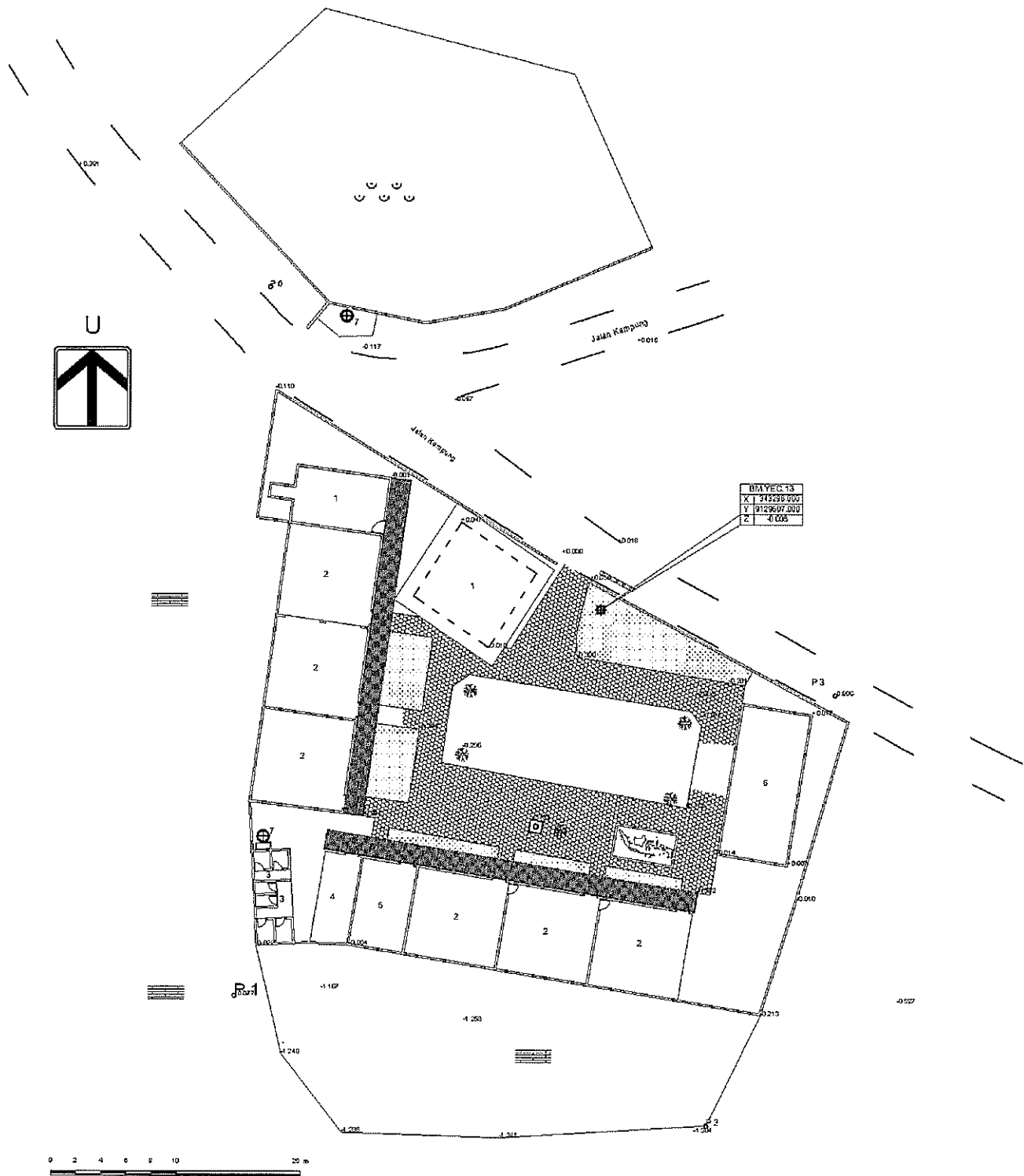
TOPOGRAPHIC MAP (AFTER THE EARTHQUAKE)
 IMOGIRI 1 SECONDARY SCHOOL



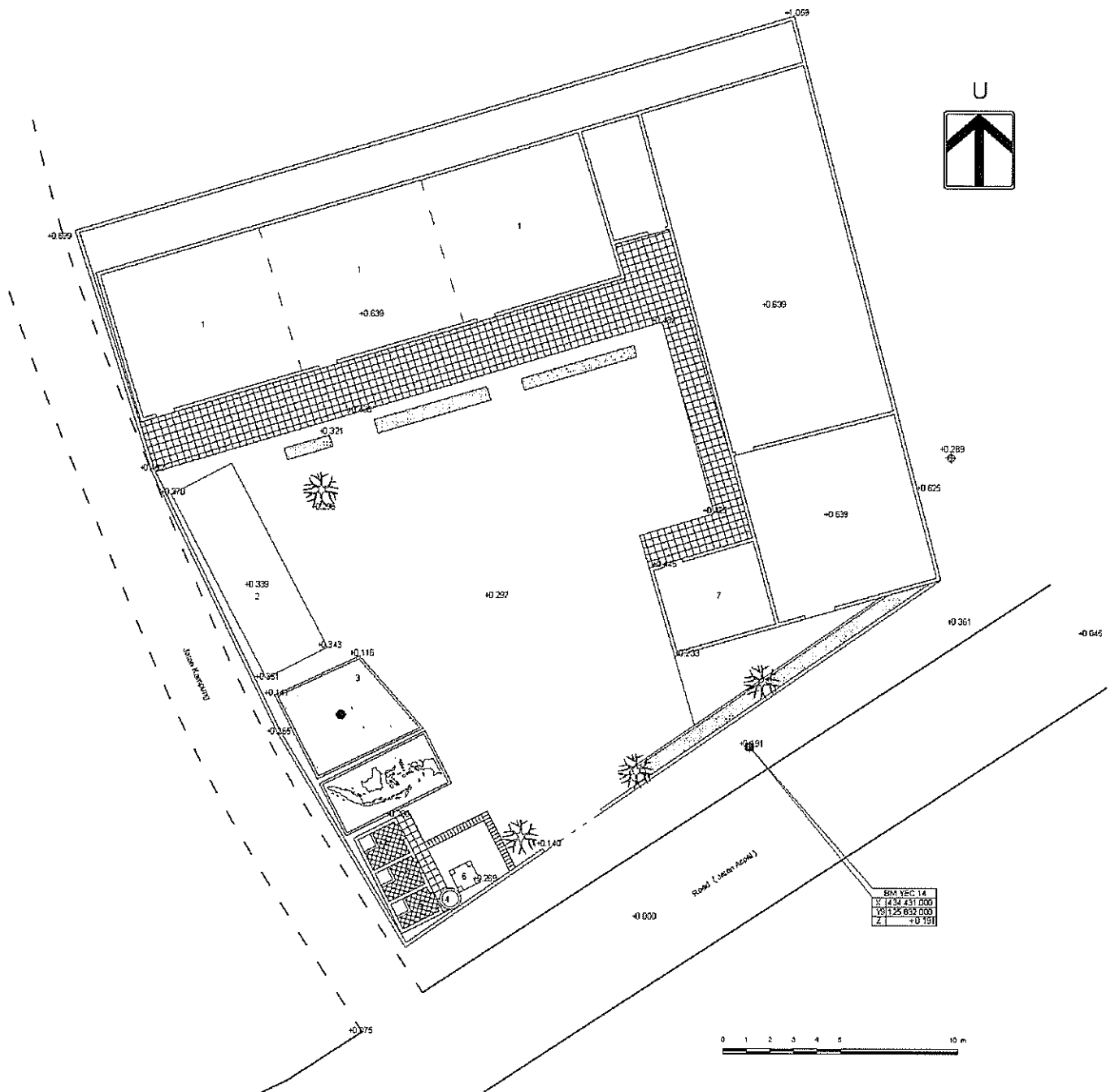
TOPOGRAPHIC MAP (AFTER THE EARTHQUAKE)
PAJANGAN 2 SECONDARY SCHOOL



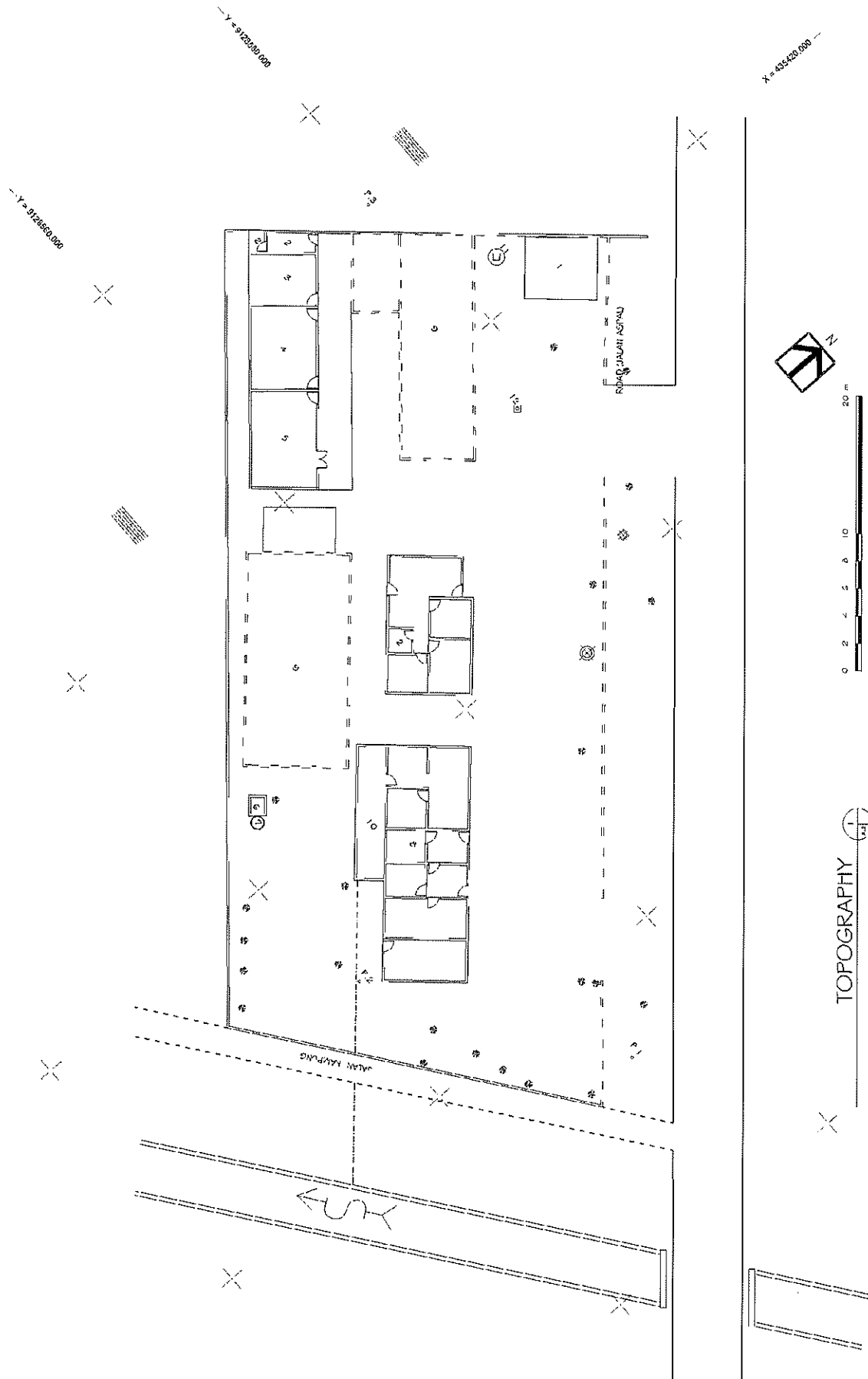
TOPOGRAPHIC MAP (AFTER THE EARTHQUAKE)
KRETEK 1 SECONDARY SCHOOL



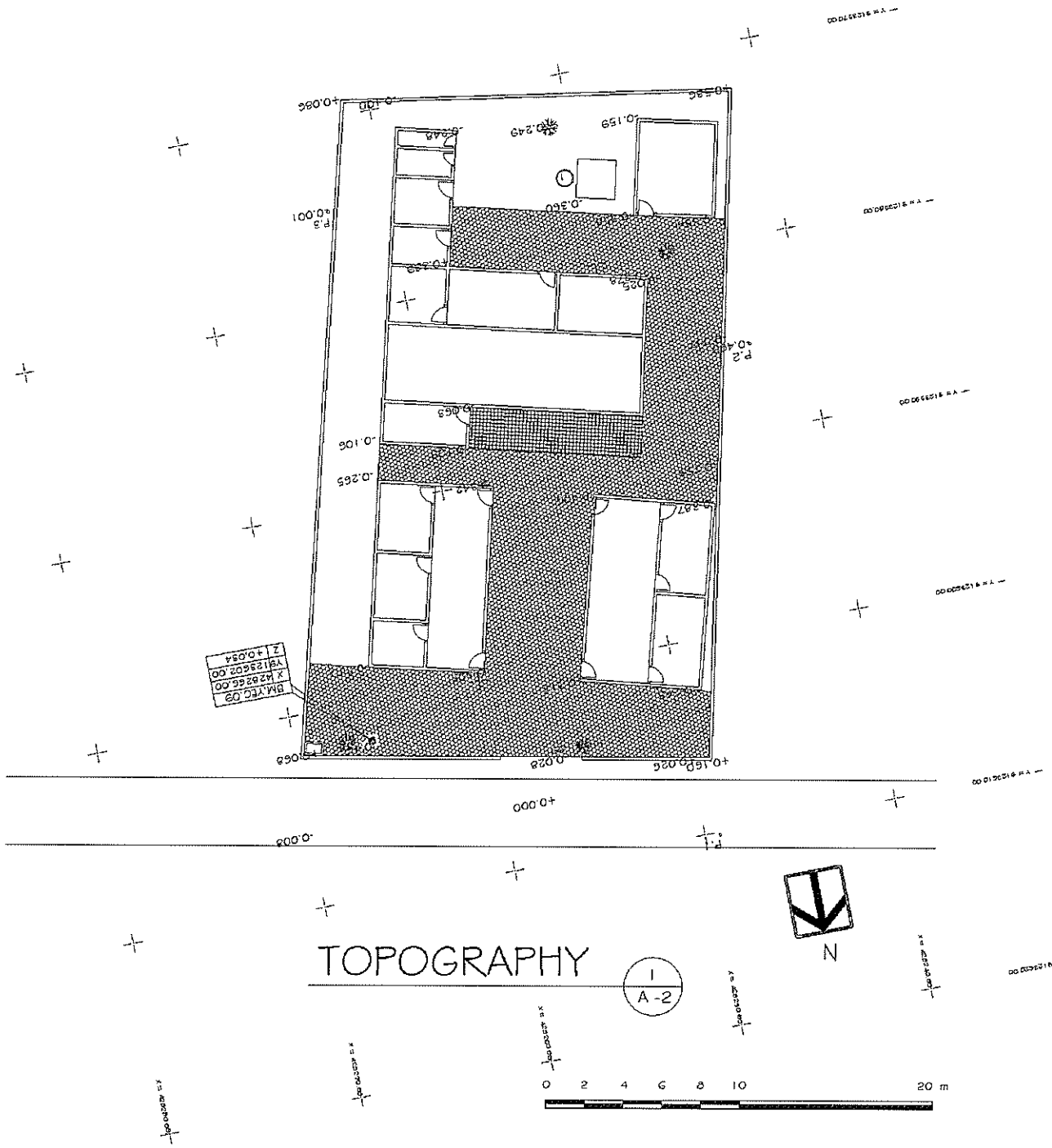
TOPOGRAPHIC MAP (AFTER THE EARTHQUAKE)
PUNGKURAN ELEMENTARY SCHOOL

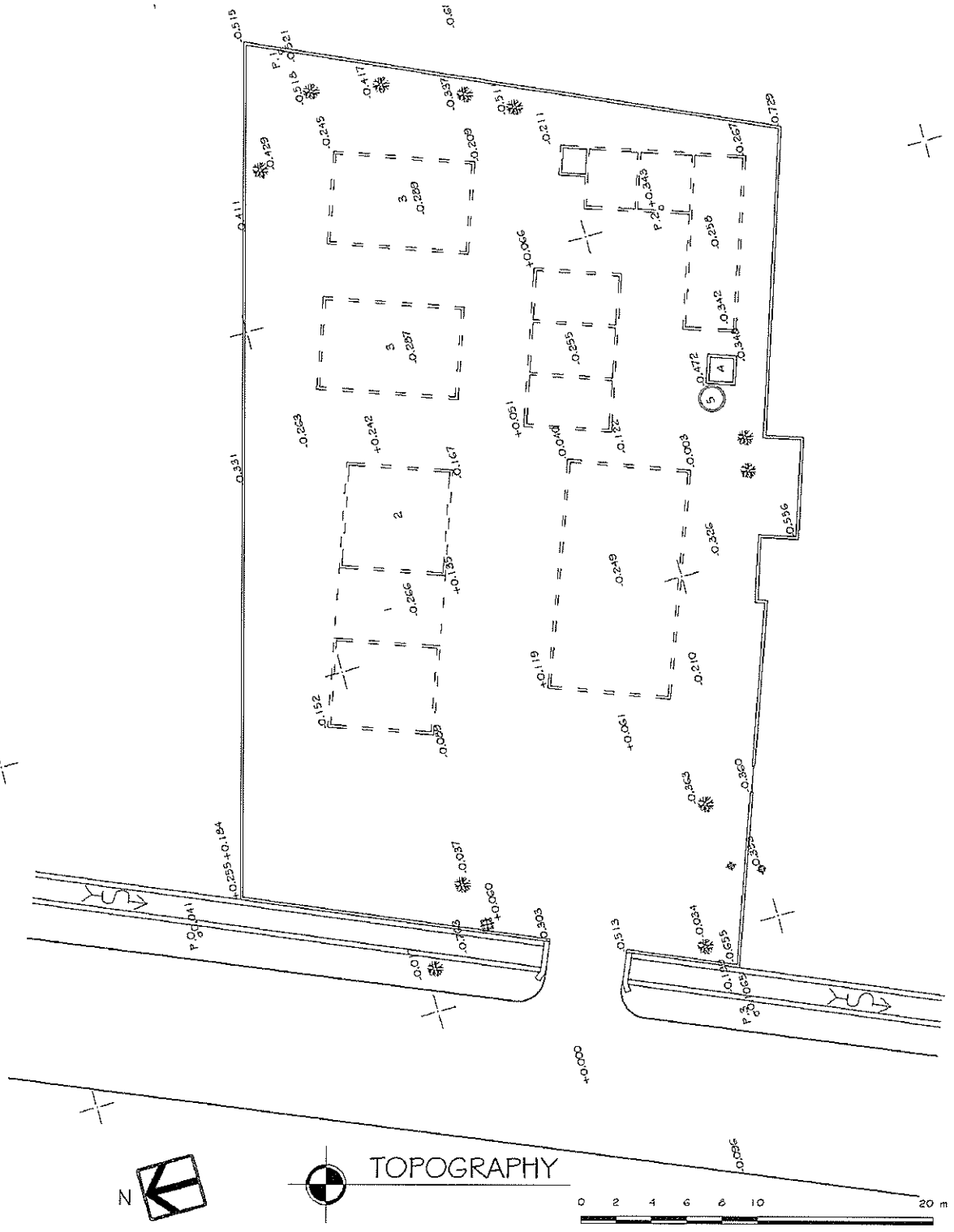


TOPOGRAPHIC MAP (AFTER THE EARTHQUAKE)
 NGASINAN ELEMENTARY SCHOOL

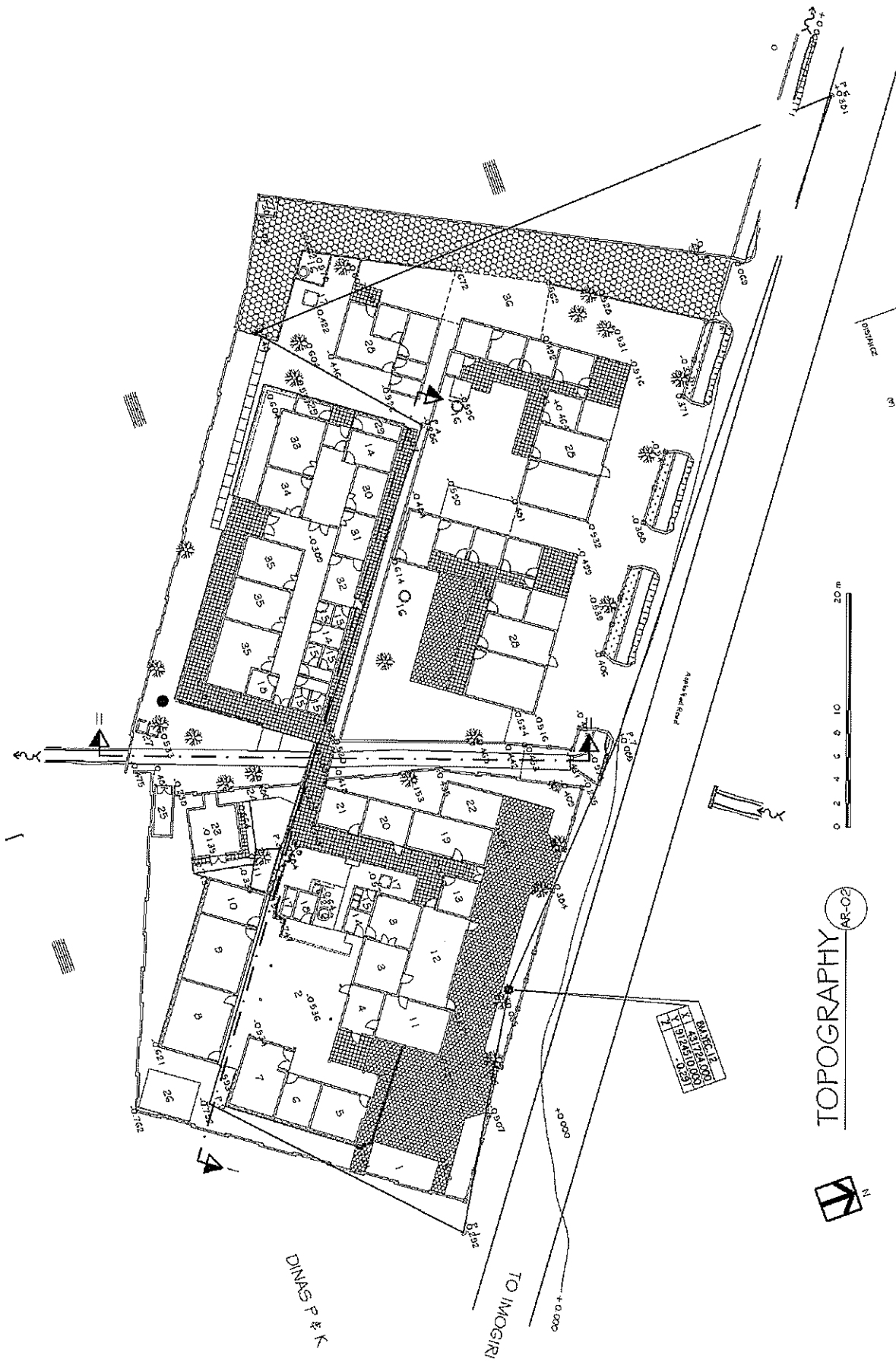


TOPOGRAPHIC MAP (AFTER THE EARTHQUAKE)
JETIS 1 HEALTH CENTER





TOPOGRAPHIC MAP (AFTER THE EARTHQUAKE)
SEWON 2 HEALTH CENTER



TOPOGRAPHIC MAP (AFTER THE EARTHQUAKE)
 IMOGIRI 1 HEALTH CENTER