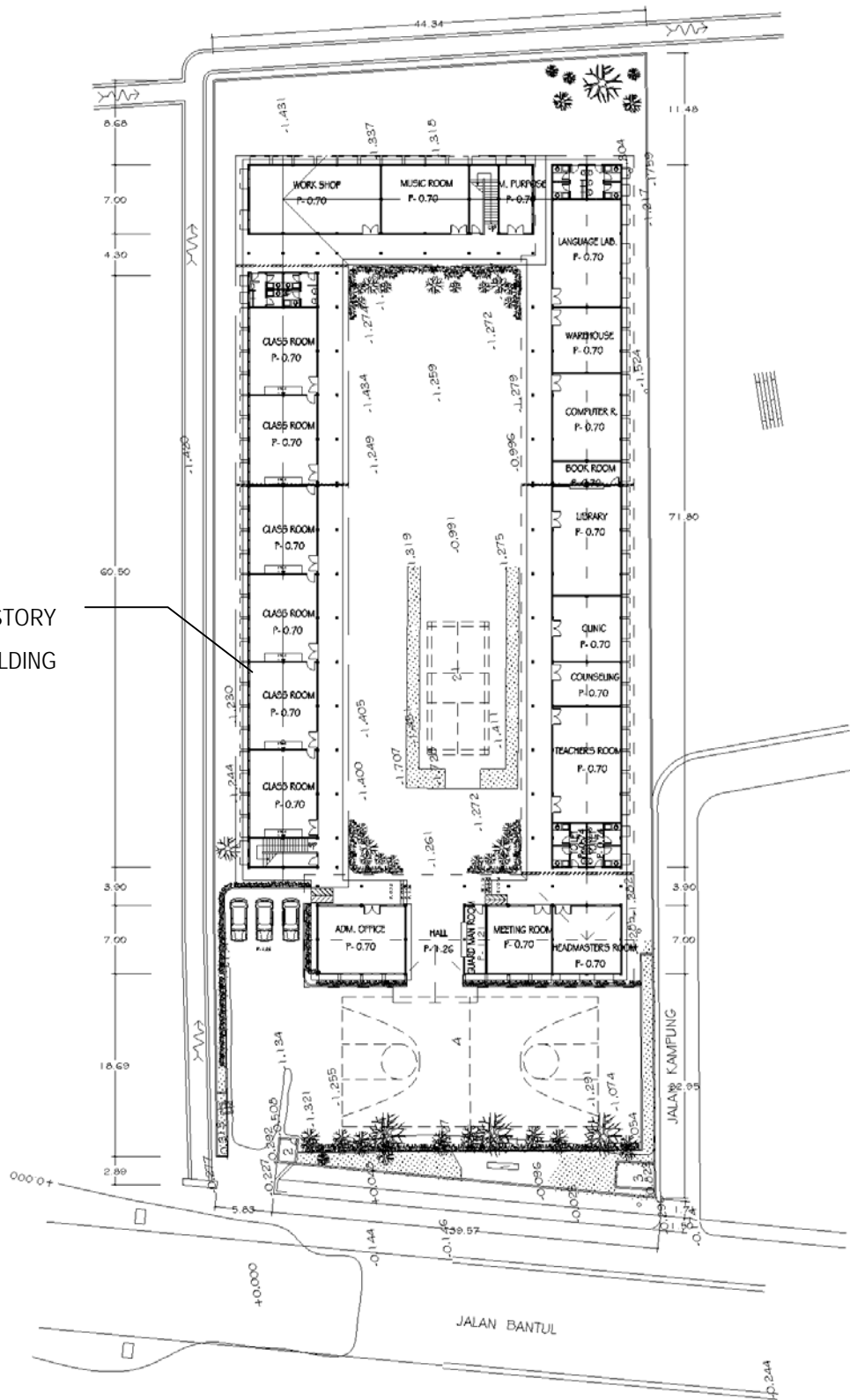
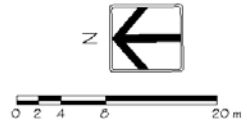


SITE PLAN
PAJANGAN 2 SECONDARY SCHOOL

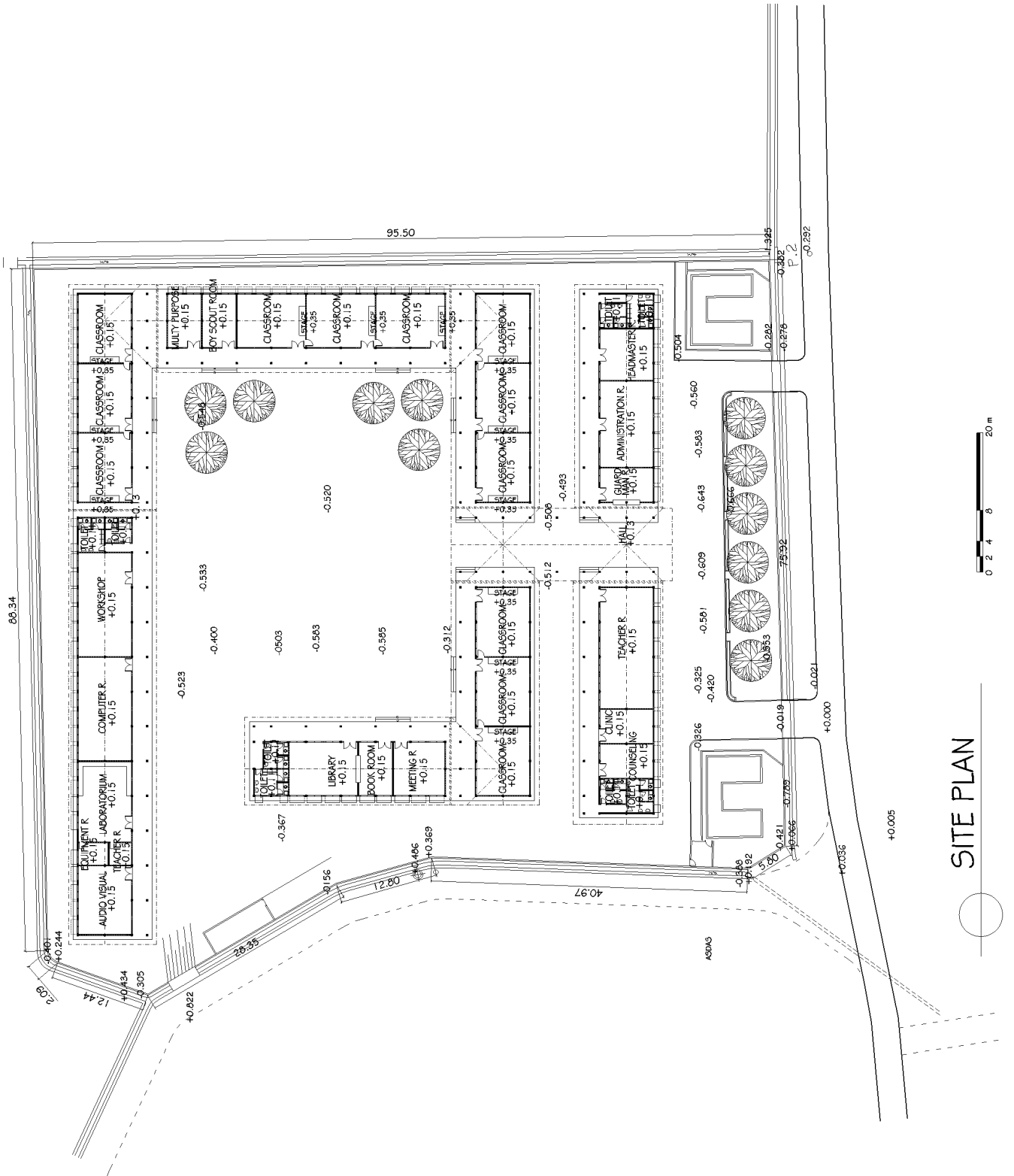
2 STORY
BUILDING



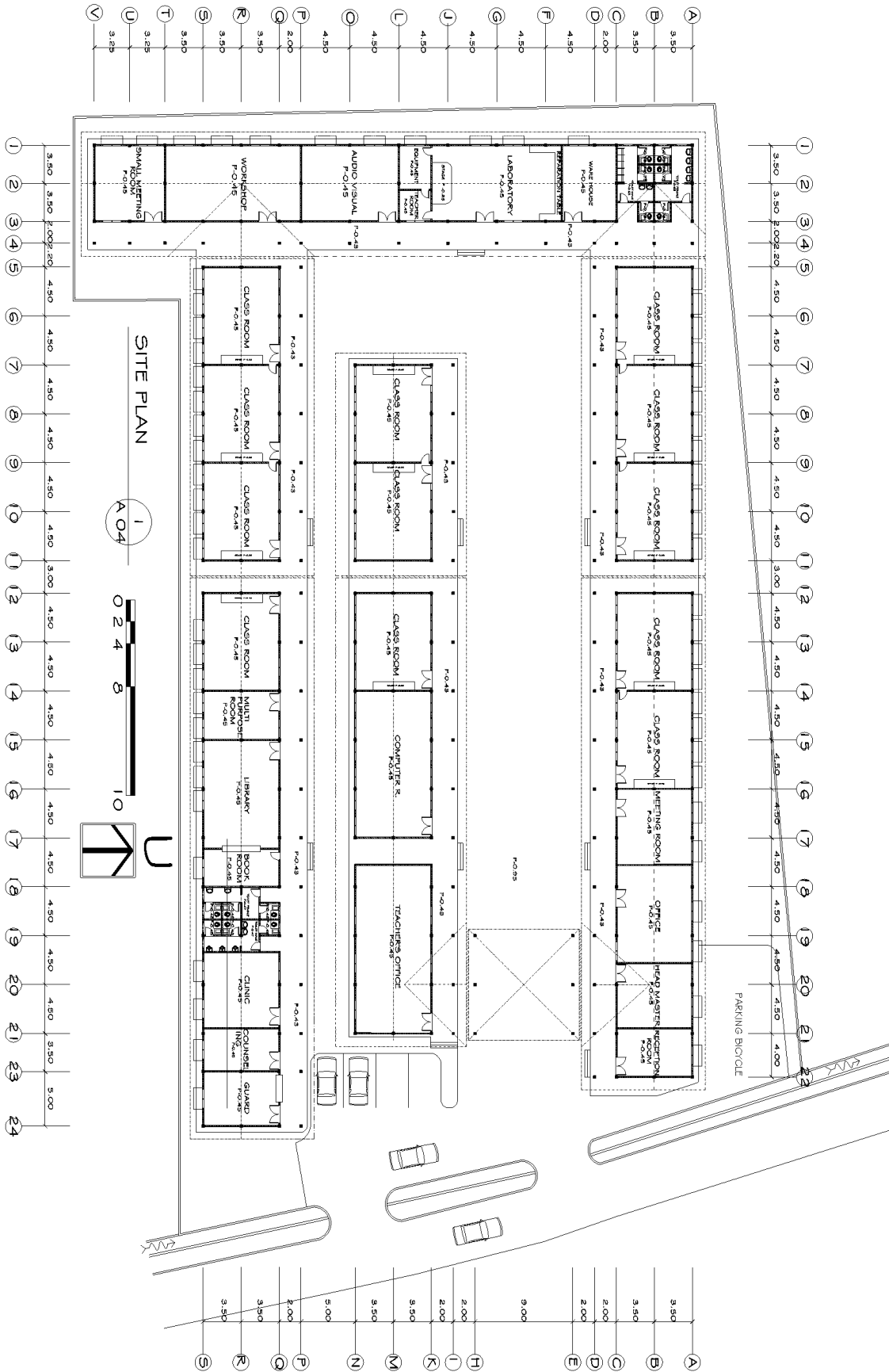
SITE PLAN & TOPOGRAPHY



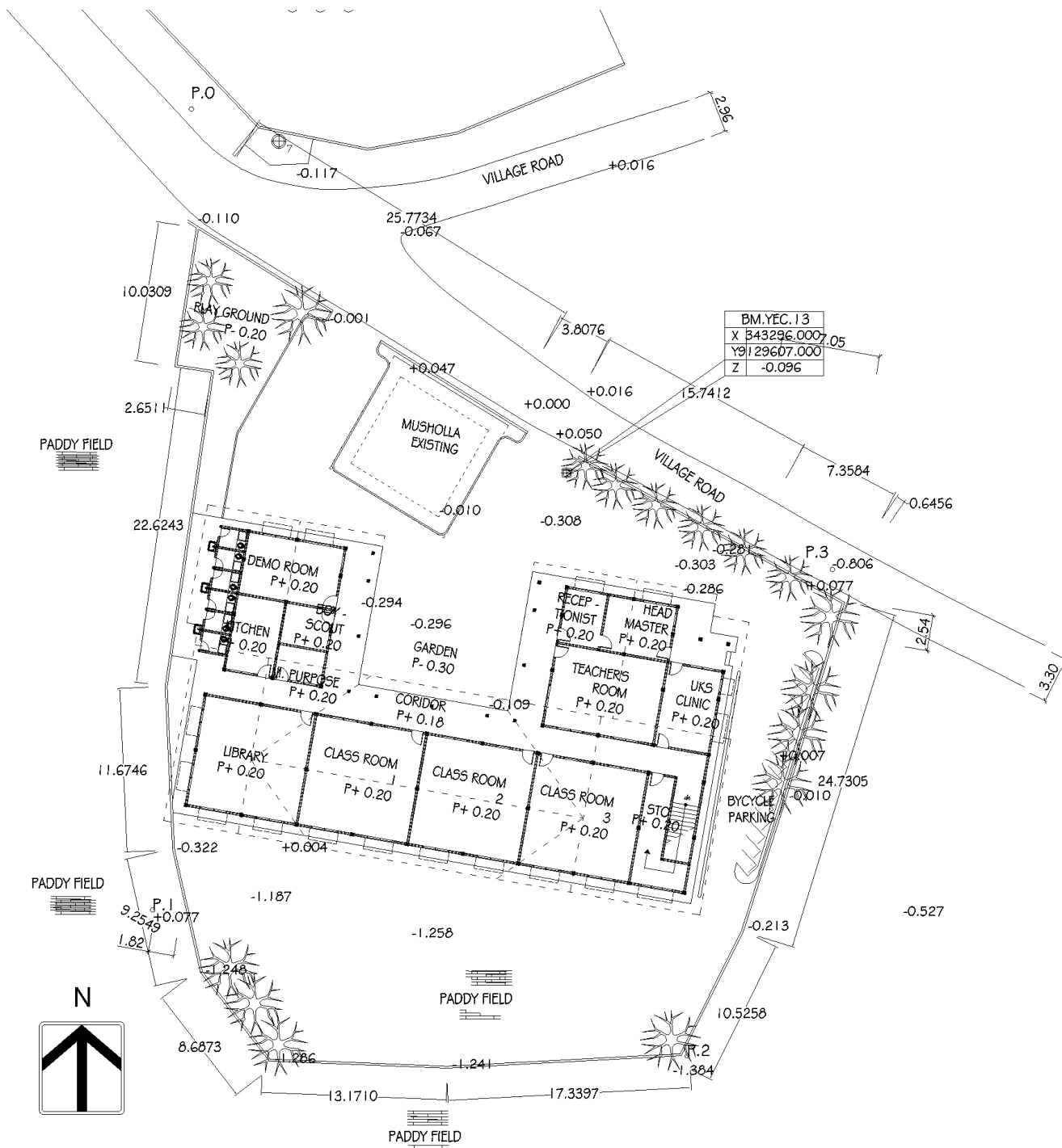
SITE PLAN
BANTUL 2 SECONDARY SCHOOL



SITE PLAN
 PANDAK 4 SECONDARY SCHOOL

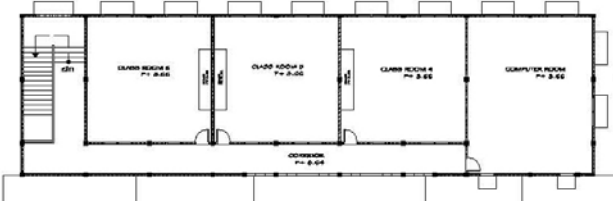
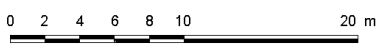


**SITE PLAN
KRETEK 1 SECONDARY SCHOOL**

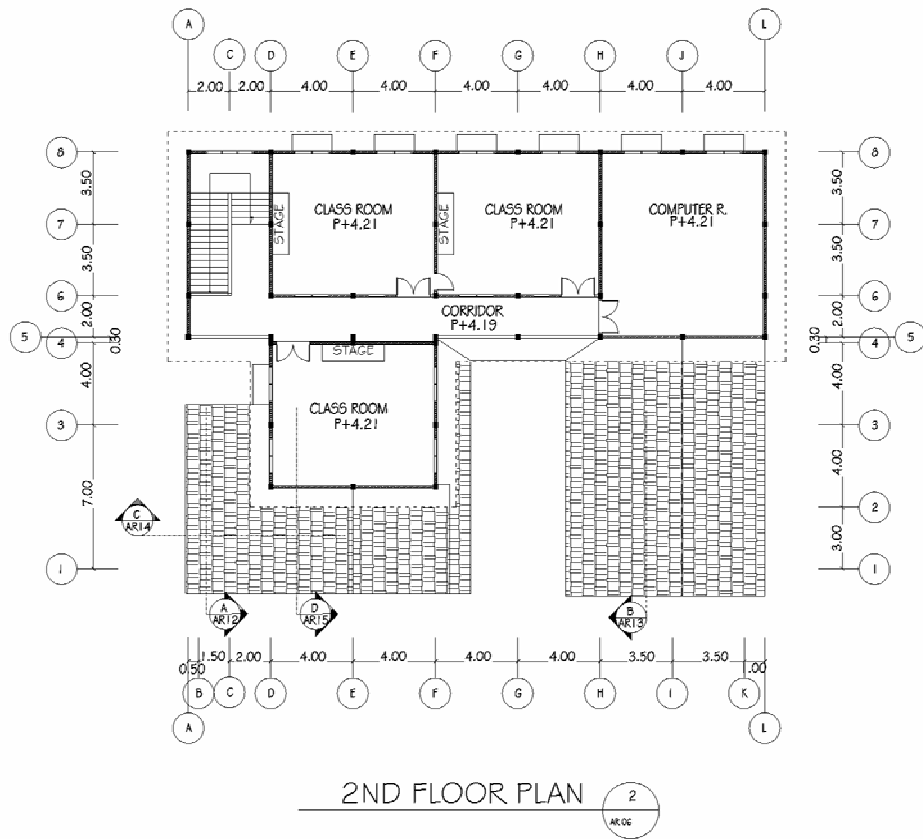
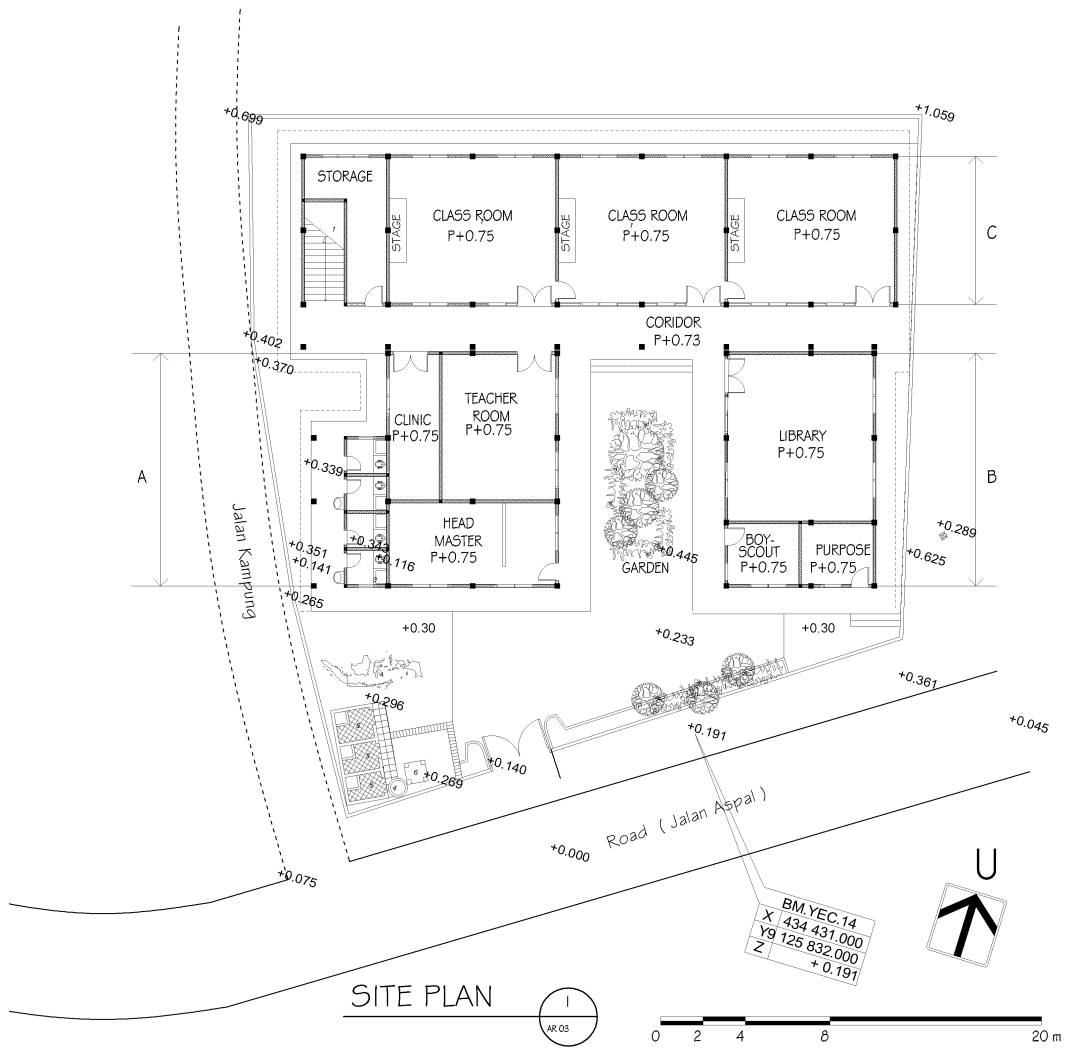


BM.YEC.13
X 843296.0007.05
Y 9129607.000
Z -0.096

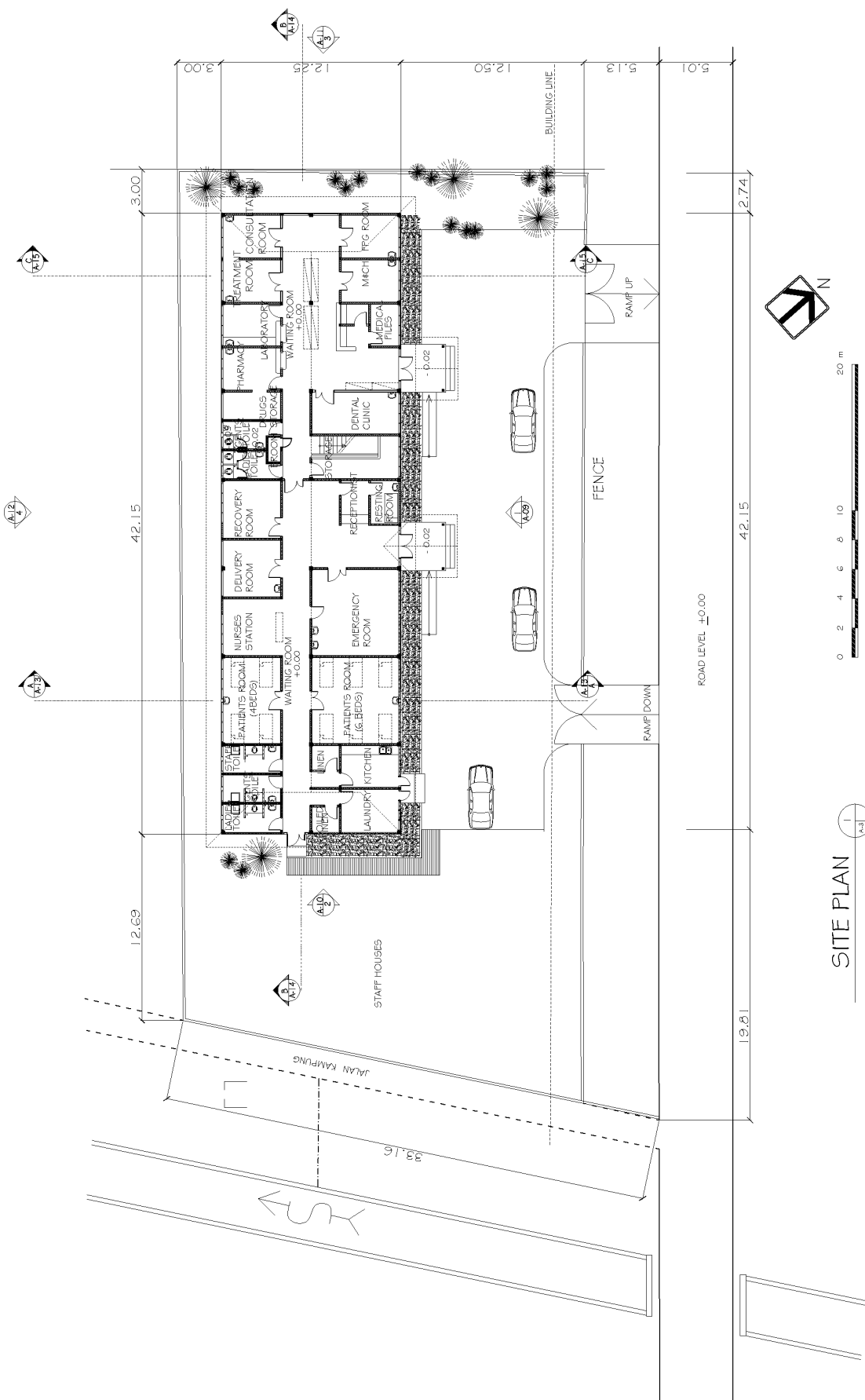
SITE PLAN & TOPOGRAPHY
SCALE 1:200



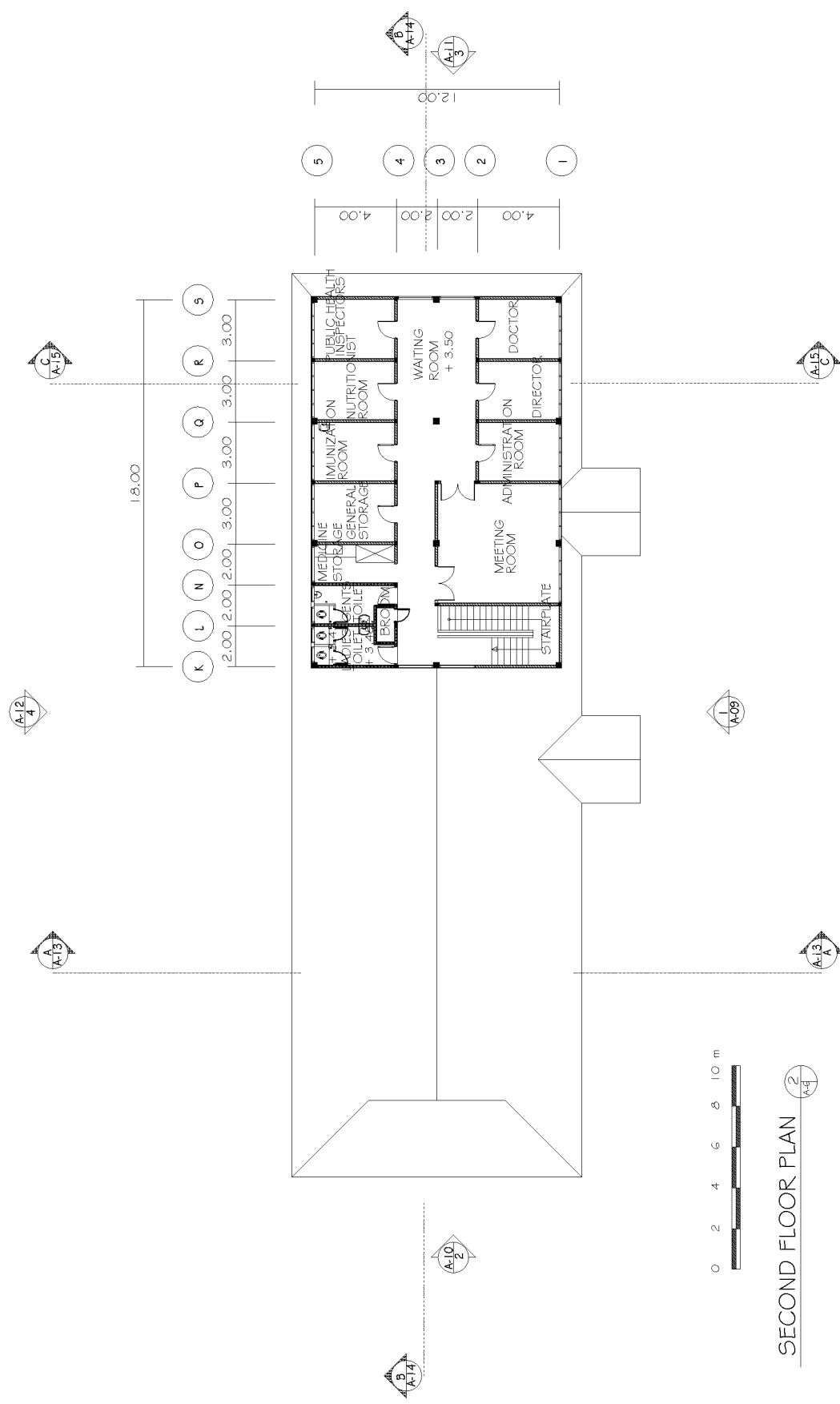
**SITE PLAN
PUNGKURAN ELEMENTARY SCHOOL**



SITE PLAN
NGASINAN ELEMENTARY SCHOOL

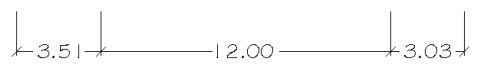
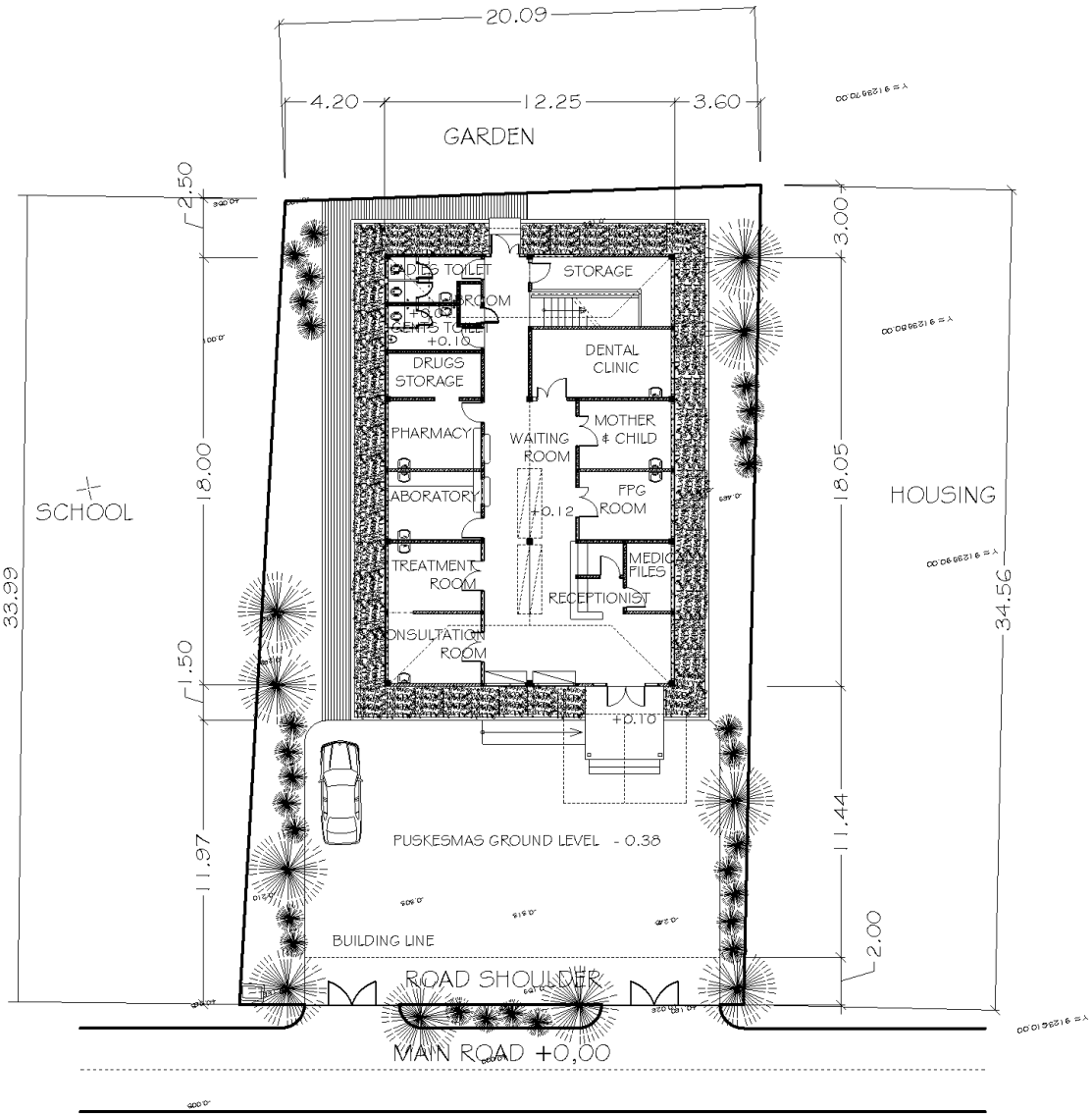


SITE PLAN
JETIS 1 HEALTH CENTER



2ND FLOOR PLAN
JETIS 1 HEALTH CENTER

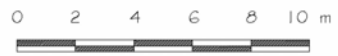
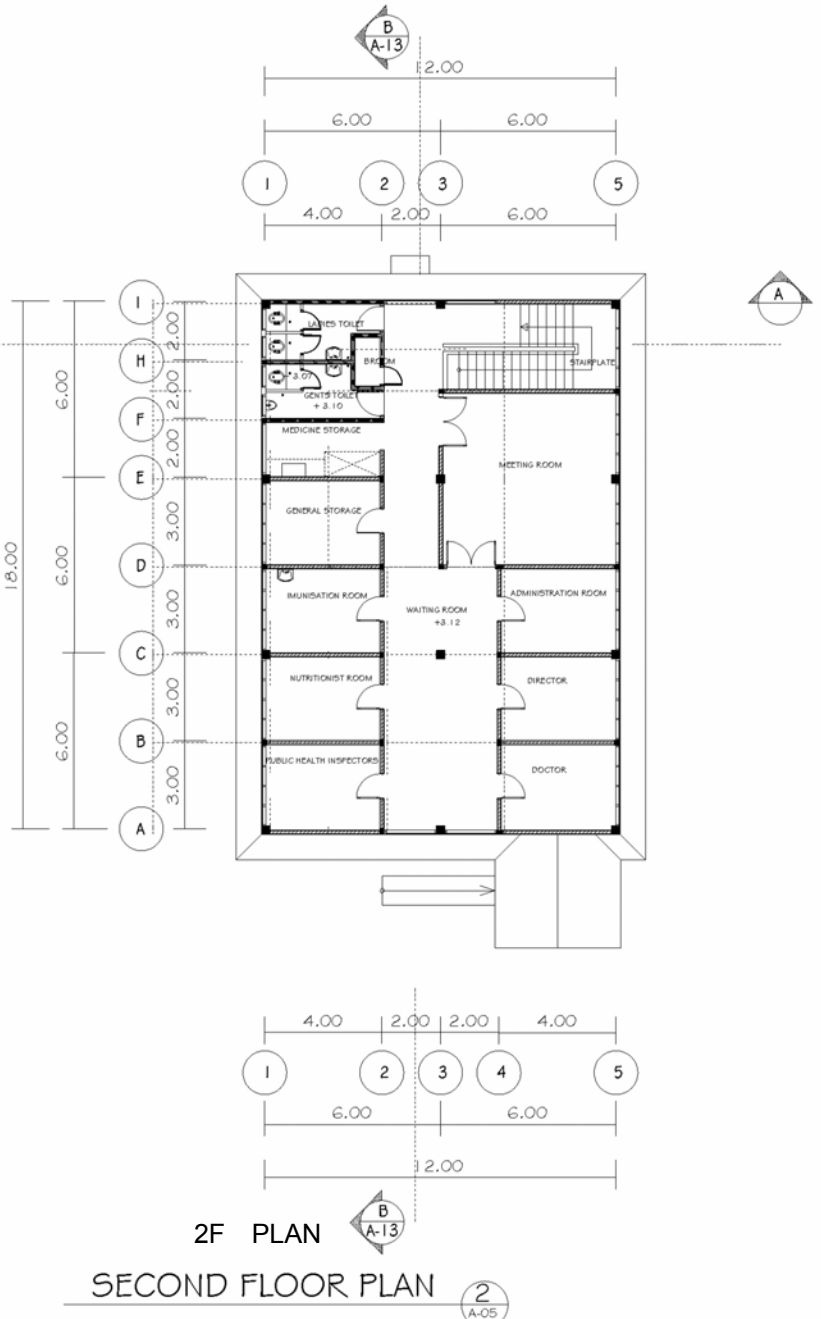
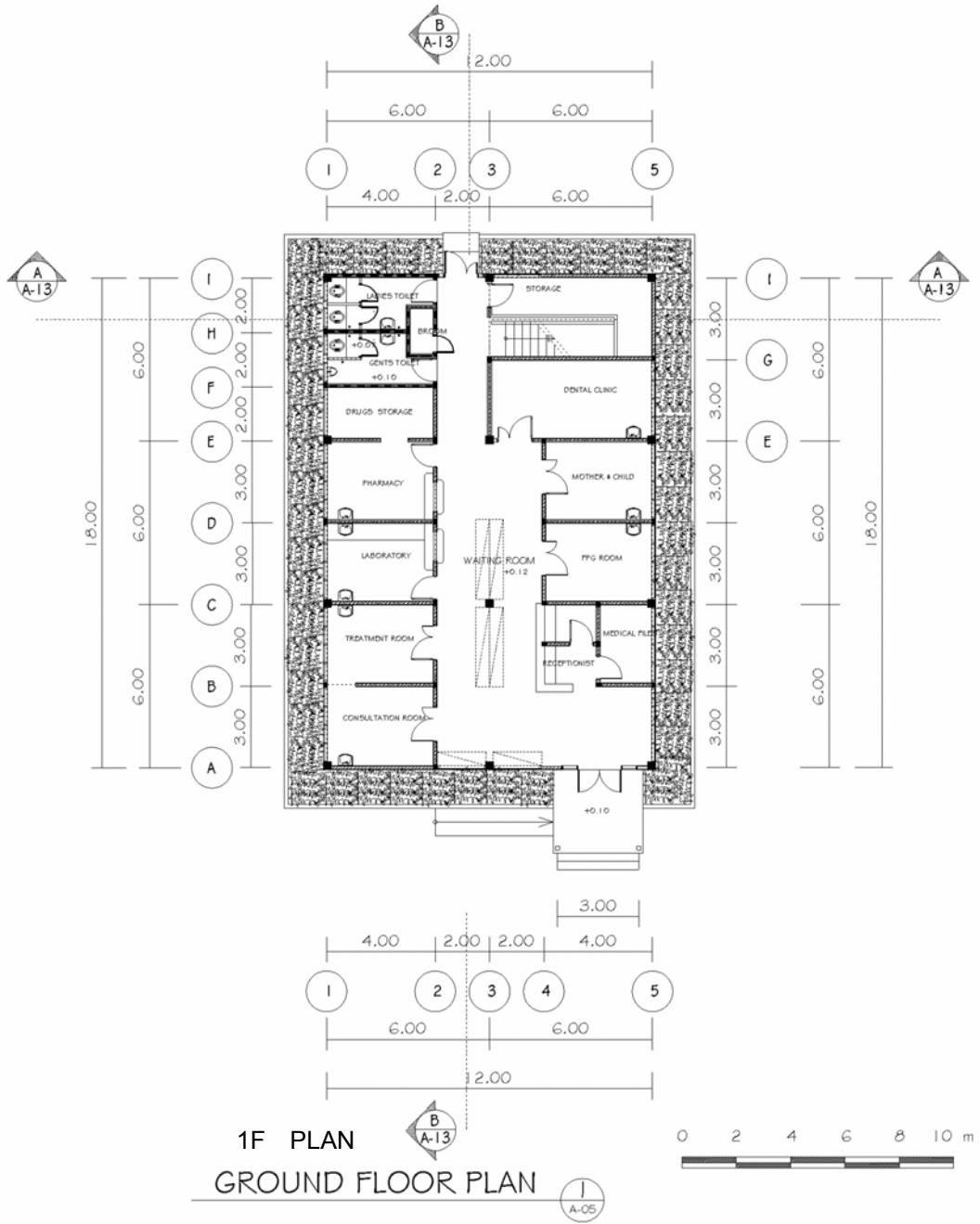
SECOND FLOOR PLAN 2
A-15



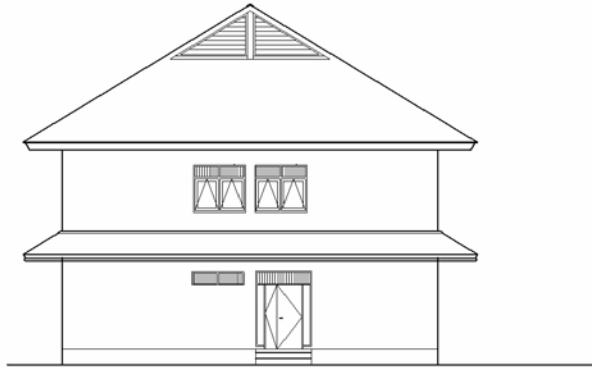
SITEPLAN



SITE PLAN
JETIS 2 HEALTH CENTER



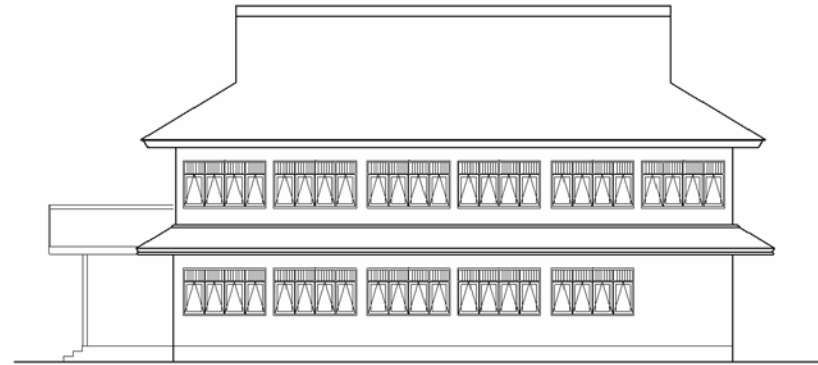
OUT-PATIENT ADMINISTRATION BUILDING



BACK ELEVATION



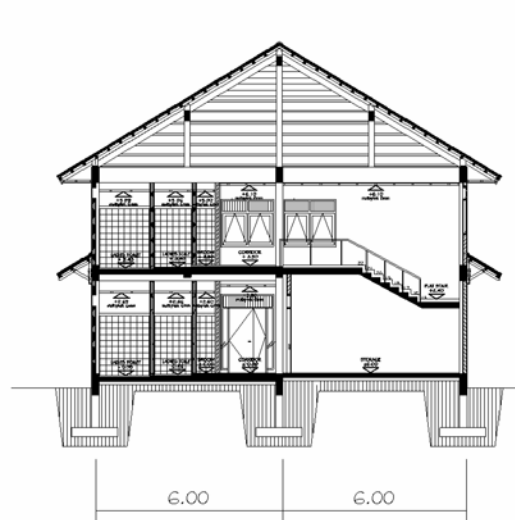
ELEVATION



SIDE ELEVATION



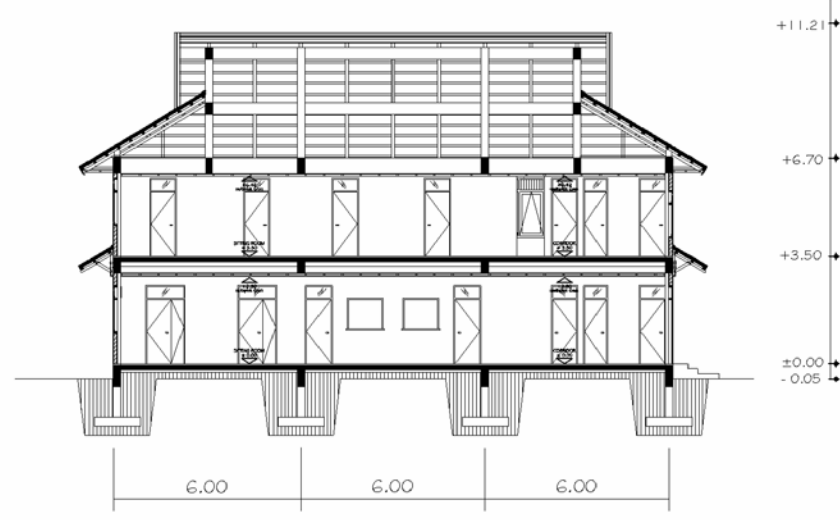
ELEVATION



A-A SECTION



SECTION



B-B SECTION



SECTION

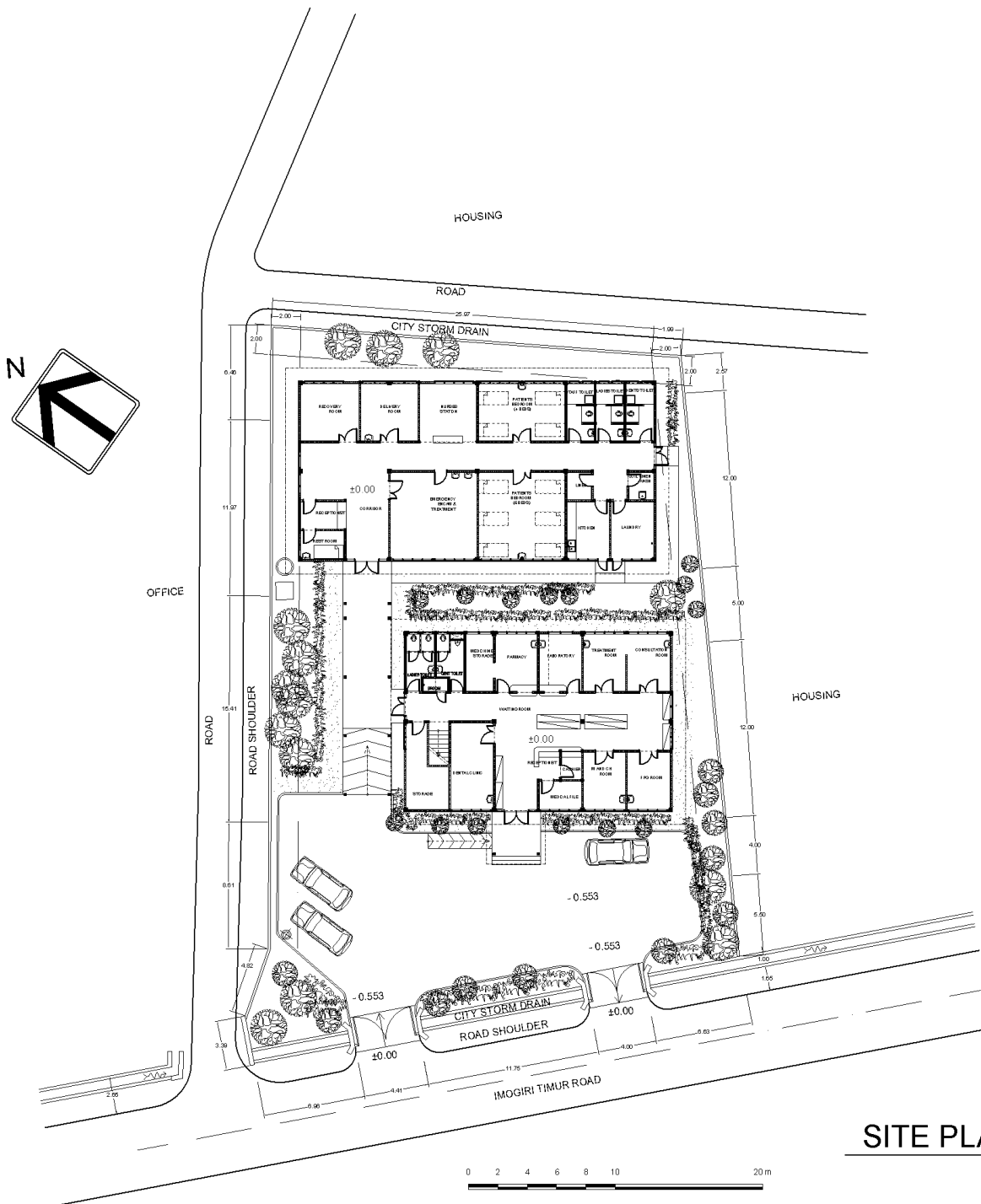




SITEPLAN



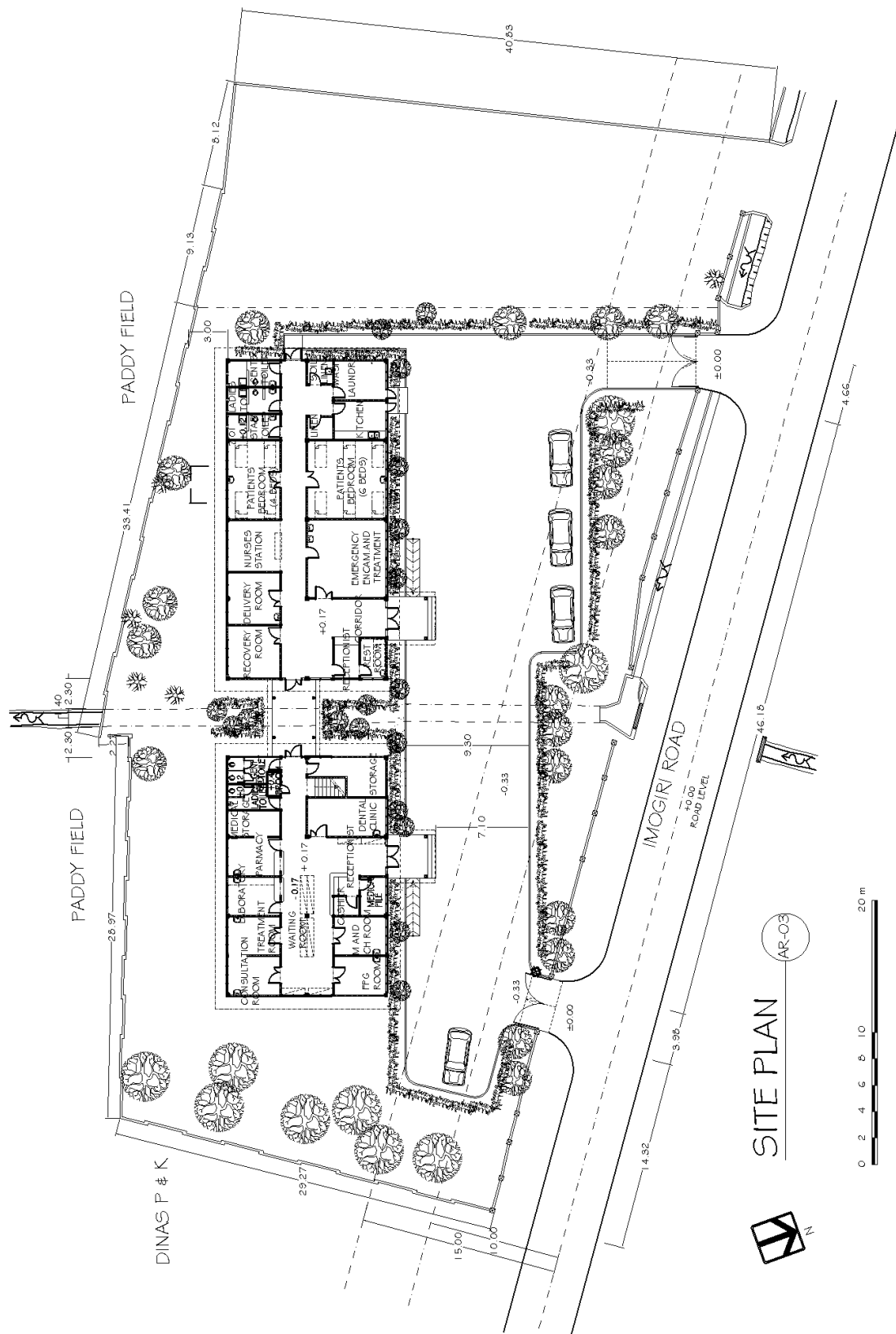
SITE PLAN
SEWON 2 HEALTH CENTER



SITE PLAN

1
A-03

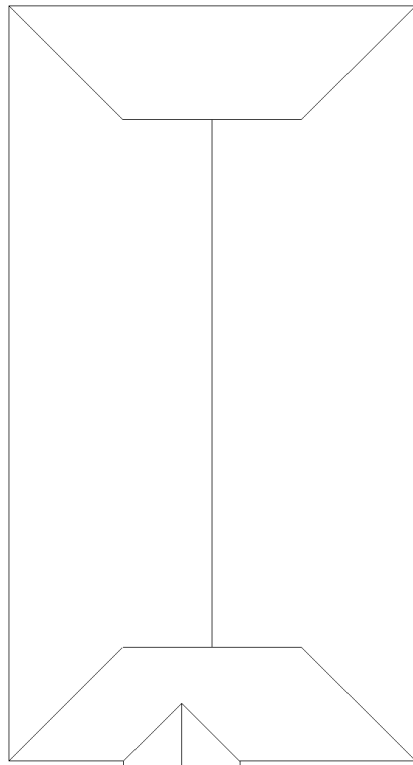
SITE PLAN
PLERET HEALTH CENTER



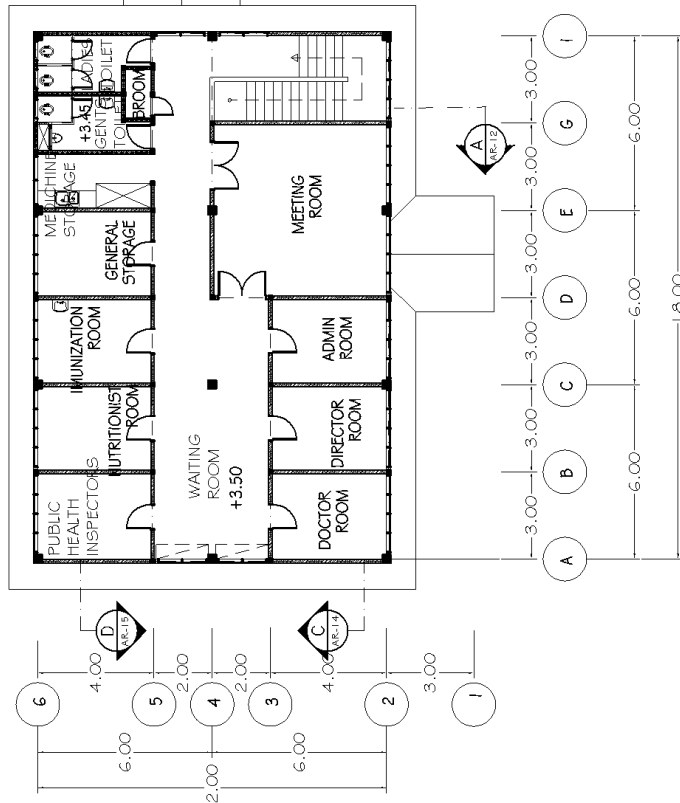
SITE PLAN AR-03



SITE PLAN
 IMOIRI 1 HEALTH CENTER



2ND FLOOR PLAN
01
AR-06



2ND FLOOR PLAN
IMOGIRI 1 HEALTH CENTER

CHAPTER 3

PROJECT EVALUATION AND RECOMMENDATIONS

CHAPTER 3 PROJECT EVALUATION AND RECOMMENDATIONS

3-1 Project Effect

The major effects anticipated as a result of Project implementation are as follows.

(1) Direct effects

[Elementary and secondary schools]

- 12 elementary school classrooms, 99 secondary school classrooms and the required special classrooms and administration rooms, etc. will be constructed, thereby enabling 480 elementary school students and more than 3,900 secondary school students to receive education in a safe and proper environment.

[Health centers]

- Five core health centers will be constructed, thereby enabling basic public health and medical care services to be provided to approximately 220,000 residents and allowing them to maintain their health in the same way as before the earthquake disaster.

(2) Indirect effects

[Elementary and secondary schools]

- With the planned safe and functional facilities, the education effect will improve.

[Health centers]

- With the planned safe and functional facilities, the safety and efficiency of public health and medical care services will increase and it will be possible to provide more appropriate services.

3-2 Recommendations

In order to realize and sustain the Project effects, it will be necessary for the Indonesian side to tackle the following issues.

- (1) In order for lessons to be appropriately conducted at the target schools following the handover of facilities, it will be necessary to recruit the necessary number of teachers and assign them without delay. Also, it will be necessary to immediately restore the operation and maintenance setups based on support from the national, provincial and regency governments and parents.

- (2) In order for the health centers to be appropriately operated following handover, it will be necessary to secure and assign the necessary doctors and nursing staff, etc. without delay.