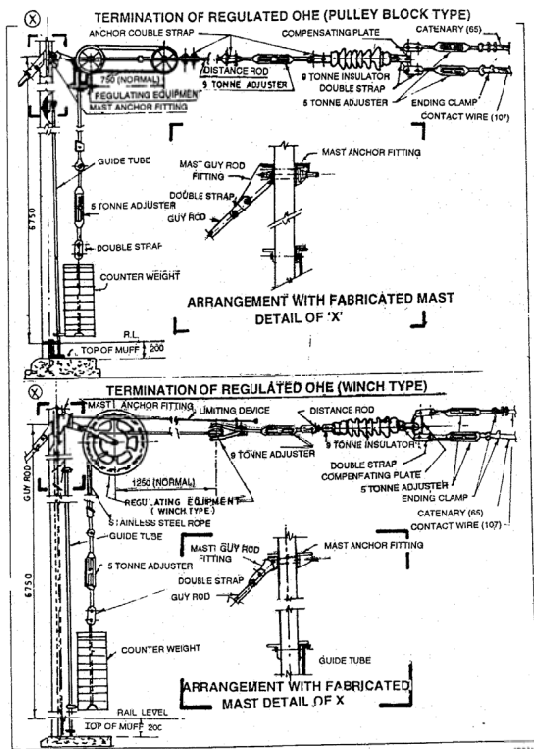
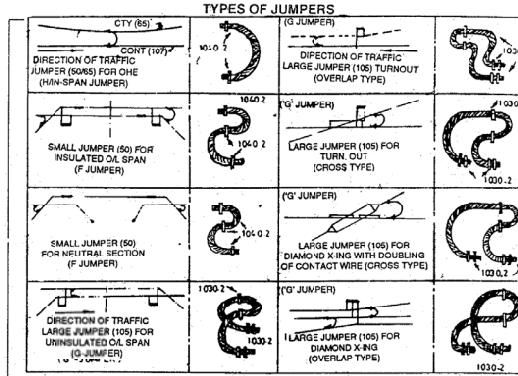


インド国幹線道路貨物鉄道輸送力強化計画調査
 予備調査/事前調査報告書
 第7章 別添資料



INDIAN RAILWAYS - AC TRACTION MANUAL - VOLUME II PART II



CHARACTERISTICS OF CONDUCTORS FOR 25 kv ac OHE

TYPE OF CONDUCTOR	MATERIAL	NO. OF STRANDS	DIAM. OF EACH STRAND (mm)	CV. ALL 2 OF COND. (mm)	X-SEC. AREA (sq. mm)	COPPER EQUIV. LBWT (kg/mm)	WEIGHT (kg/m)	NORMAL TENSION (kg)	BREAKING LOAD (kg)	MAX. SAFE WORKING (Appr. LOAD)	FACT. OF SAFE (Appr. LOAD)
CATENARY (65)	CADMIUM COPPER	10	2.1	10.50	64.94	68	0.6779	1000	9500	1507	3
CONTACT WIRE (107)	CADMIUM COPPER	1	12.24	12.24	107	104	0.9612	1000/1250	3905	1708	23
FEEDER/RETURN CONDUCTOR (130)	CADMIUM COPPER	37	2.25	15.75	147.10	144	1.326	1000	6080	2026	3
LARGE SPAN WIRE (130)	CADMIUM COPPER	37	2.10	14.70	125.6	102	1.1692	2000	7650	2550/1915	3
SMALL JUMPER (50)	ANNEALED COPPER	19	1.83	9.14	48.98	48	0.952	—	1130	317	3
LARGE JUMPER (105)	COPPER	133	1.013	15.20	107.3	103	0.942	—	—	—	—
SMALL DROPPER (5mm)	ELECTROLYTIC COPPER	1	5	5	196.4	19	0.1746	—	825	275	3
LARGE DROPPER (7mm)	HARD DRAWN COPPER	1	7	7	384.8	38	0.3421	—	1530	510	3
EARTH WIRE (50)	A.C.S.R. RACOON	6/1	4.30	12.27	77.83	48	0.318	320	2746	915	3
RETURN CONDUCTOR (SUNBURNER)	ALUMINIUM	19	3.99	19.90	233.50	140	0.652	500	3736	1245	3
EARTH WIRE	GALVANIZED STEEL	19	2.50	12.5	93.3	—	0.7314	1000	6100	2033	3
RELAYE	ALUMINIUM	133	1.40	21	205	120	0.5596	—	3380	1125	3

INDIAN RAILWAYS - AC TRACTION MANUAL - VOLUME II PART II

235

別添資料 図 7- 54 電車線路設備技術図

別添資料 図 7- 55 電車線路設備技術図