

Activity	Status		Status		Status		Status		Status		Status		Status		Status		Status		Status			
	Plan	Actu.	Plan	Actu.	Plan	Actu.	Plan	Actu.	Plan	Actu.	Plan	Actu.	Plan	Actu.	Plan	Actu.	Plan	Actu.	Plan	Actu.		
3-3 To examine over the boundaries regarding forest management and land use for authorization.																						
4-1 To carry out rural development activities determined through the baseline survey.																						
4-2 To provisionally set environmental standards and social codes over the forest use and management through discussion between the local community and concerned authorities.																						
4-3 To assist the formulation of a provisional forest management plan by the local community.																						
4-4 To assist small-scale experiments/learning activities in the forest carried out by the local community.																						
4-5 To assist the monitoring over the implementation of the provisional forest management plan by the local community.																						
5 To assist the elaboration of systems of participatory forest management by the local communities and concerned authorities based on the recommendations made through the monitoring.																						
6-1 To prepare materials regarding geographic information for facilitating the mutual understanding among the stakeholders.																						
6-1-1 To prepare and analyze Land use and Vegetation Maps																						
6-1-2 To prepare materials regarding geographic information for distribution Materials																						
6-2 To share information and lessons learned over participatory forest management with other donors, NGOs, and the Federal Government through networks such as Participatory Forest Management Working Group (PFM-WG)																						
6-3 To hold an open seminar inviting other donors, NGOs and the Federal Government.																						
6-4 To organize a seminar for introducing project activities inviting community leaders from other Villages (Ganda) in Belete-Gera RFPA																						
6-5 To publish newsletters (in Oromiffa and English) in order to facilitate information sharing on participatory forest management among local people.																						
7-1 Building for the Forestry Management Training center in Jimma Zone																						
7-2 Building for the Participatory Forest Management Training center in Seka Chokorsa District																						
7-3 Building for the Participatory Forest Management Training center in Gera District																						
7-4 To maintain an access road between Chira and Naso in Gera District																						

Accomplishment Grid

1) Accomplishment of Indicators for Project Purpose

Project Purpose	Indicators in the PDM	Results
Participatory forest management is sustainably put in place in target villages (Ganda) in Belete-Gera RFFPA.	<p>1) More than 70% of the target communities supported by the project sustainably carry out forest management activities.</p> <p>2) More than 70 % of the local people supported by the Project stop the deforestation (estimated through annual participatory monitoring) after participating in the Project.</p> <p>3) Contracts for forest management are signed between the target villages and the Oromia Regional Government by September 2006.</p>	<p>Two communities (sub-villages) in two villages (Gandas) supported by the Project sustainably are carrying out forest management activities as stipulated in Provisional Forest Management Agreements.</p> <p>The forest at the target sub-villages had been used and conserved in a traditional manner; the P-FMA secures local people's rights to use and live in the forest. Three sessions of monitoring have proved that the local people supported by the Project have not conducted any deforestation activities.</p> <p>Provisional forest management agreements were signed between the target sub-villages and the Oromia Regional Government in August 2005. After compiling the results of monitoring, P-FMA will be re-examined and formalization process of FMA must be initiated.</p>

2) Accomplishment of Indicators for Outputs

Output	Indicators in the PDM	Results
(1) Target villages (Ganda) are selected based on a participatory manner such as workshops and inquiries.	<p>(1)-1 The report on the Baseline survey is produced in Oromiffa and English</p> <p>(1)-2 Local People in the target villages (Ganda) concur with the implementation of activities towards participatory forest management.</p>	<p>National consultants and a Japanese short-term expert conducted a baseline survey through participatory workshops and supplementary interviews at the target Gandas (Sabaka-Dabiye and Gara-Naso) from January to February 2004. Since Gara-Naso was replaced by Gura-Afalo, a supplementary baseline survey was conducted at Gura-Afalo in November 2004. The resulting reports were produced in Oromiffa and English.</p> <p>After a series of meetings between June and August 2004, local people concurred with the selection of the target villages (Ganda). The Oromia Regional Government approved the decision in August 2004.</p>
(2) Capacity of technical experts and development agents over forest management particularly planning, monitoring and evaluation is strengthened.	<p>(2)-1 Training needs of the technical experts and development agents are grasped.</p> <p>(2)-2 Training plans are elaborated by April 2004.</p> <p>(2)-3 Training plans, curriculums and materials are revised according to the recommendations based on the evaluation of the trainings.</p>	<p>Training needs for participatory forest management were roughly identified but not examined in detail.</p> <p>Ready-made training programs, not specific to this project, were mostly used.</p> <p>As stated above, the Project did not prepare its own training plans, curriculums and materials.</p> <p>A one day workshop was organized to present the results of training programs in December 2004, where experience of knowledge gained in the training was shared among participants of the workshop. Recommendations to the future training were discussed in the workshop.</p>
(3) Boundaries regarding forest management and land use in the target villages (Ganda) are agreed upon by all of the major stakeholders.	<p>(3)-1 Local stakeholders in and around the target villages (Ganda) agree with the boundaries regarding forest management and land use through participatory three-dimensional modeling.</p> <p>(3)-2 Geographic information such as land use</p>	<p>Through workshops and a GPS survey, provisional boundaries were settled among the villagers of the target sub-villages. Since the boundaries were not clearly recognized by stakeholders and were difficult to be agreed upon, the Project made a decision to postpone achieving consensus on boundaries with adjacent villages and move forward the P-FMA. Participatory three-dimensional modeling workshops were held in Afalo and Chaffee in February 2006 in order to confirm the land use and provisional boundaries.</p> <p>The information regarding the land use and boundaries demonstrated on the three-dimensional model was</p>

	and vegetation maps is prepared.	incorporated into the GIS system.
	(3)-3 The boundaries in regard of forest management and land use are authorized by Oromia Regional Government	The P-FMAs with a map showing provisional boundaries were approved by the Oromia Regional Government in August 2005.
(4) Capacity of the local people in the target villages (Ganda) for natural resource management is strengthened.	(4)-1 More than 80% of the members of local forest management groups regularly have at least a meeting every month for decision-making and information sharing. (4)-2 No less than 30% of the membership of local forest management groups in total is composed of women. (4)-3 A provisional forest management plan is formulated in each target villages (Ganda). (4)-4 A monitoring on the status of the implementation of the provisional forest management plan is carried out by the local people. (4)-5 The provisional forest management plan is revised by the local people based on the recommendations made through the monitoring.	Executive Committee that represents WaBuB members was held every month in each sub-village, while General Assembly was held occasionally with the participation of the majority (60% in Afalo and 70% in Chaffee on average) of WaBuB members. Executive Committee in Afalo WaBuB includes 2 female members out of 9 members (22%) and Executive Committee in Chaffee WaBuB includes 2 female members out of 7 members (29%). WaBuB members are constituted on a household basis; most households are represented by a male member. Provisional forest management agreements that stipulate rights and duties of WaBuBs and ARDOs on forest management with a boundary map attached were signed in Afalo and Chaffee in August 2005. Three sessions of joint monitoring for P-FMA by WaBuB and ARDO were conducted in December 2005, March and June 2006. Subsidiary by-laws of P-FMAs, which were initially formulated in January 2006, have been continuously modified as a result of joint monitoring sessions.
(5) Appropriate system of participatory forest management in the Belete-Gera RFFPA are clarified.	(5) Appropriate systems of participatory forest management in the Belete-Gera RFFPA are elaborated.	After compiling the results of monitoring, P-FMA will be re-examined in the process of formalization of FMA by the end of the Project. Subsidiary by-laws were approved by WaBuBs' General Assembly in April 2006 in Afalo and in May 2006 in Chaffee.
(6) Information and lessons learned on participatory forest management are shared among the stakeholders.	(6)-1 Geographic information is disseminated to the concerned organizations/institutions. (6)-2 Regular information sharing is made through networks such as Participatory Forest Management Working Group. (6)-3 An open seminar is held inviting other donors, NGOs and the Federal Government. (6)-4 Representatives from more than 50% of the total villages (Ganda) in Belete-Gera RFFPA take part in the seminar which introduces the activities of the Project (6)-5 Four newsletters (in Oromiffa and	Geographic information, including land use and vegetation maps, was prepared and handed over to the Oromia Regional Government. List of maps is shown in Annex 6-c. There was no such a formal mechanism to share information as Participatory Forest Management Working Group. The report on the baseline survey was distributed to other donors/projects including GTZ, Adaba-Dodora, LUPO-GTZ, FARM AFRICA. The project activities were also presented on the occasions of workshops organized by other projects/donors. An open seminar on the results of the Project is tentatively planned in September, inviting NGOs, donors, and Fed Government. A seminar for introducing participatory forest management to technical experts, development agents and community leaders of other villages in Belete-Gera RFFPA is being considered to be organized by the end of the Project period. Newsletter was issued once to disseminate the objective and the progress of the Project. As an alternative method,

	English) are published.	Project activities were broadcasted four times by the local TV, contributing to an enhancement of stakeholders' awareness.
3) Progress of Project Activities		
Output	Activities	Progress
(1) Target villages (Ganda) are selected based on a participatory manner such as workshops and inquiries.	(1)-1 To conduct a baseline survey with participatory methods	<ul style="list-style-type: none"> A task force (Region, Zone, District and JICA experts) was formed and selected the target villages (Ganda) for the baseline survey by the following criteria in November 2003: <ol style="list-style-type: none"> Good forest governance by local people Accessibility Forest type Interest of community Interest of district administration Sabaka-Dabaye and Gara-Naso were selected as the target Gandas. National consultants and a Japanese short-term expert conducted a baseline survey through participatory workshops and supplementary interviews at the target Gandas from January to February 2004 and its report was produced in Oromiffa and English. As a result of discussions among the task force, Gara-Naso was replaced by Gura-Afalo on the ground that the latter contains natural forest and forest coffee in August 2004. A supplementary baseline survey was conducted at Gura-Afalo in November 2004. A stakeholder analysis was conducted at the target Gandas from February to March 2004.
(2) Capacity of technical experts and development agents over forest management particularly planning, monitoring and evaluation is strengthened.	(1)-2 To carry out an analysis on the stakeholders in the area. (1)-3 To organize a workshop for consensus building towards participatory forest management and rural development activities in candidate target villages (Ganda). (2)-1 To carry out a task analysis of the technical experts and development agents and have an appraisal on their training needs. (2)-2 To formulate training (2)-3 To present a training course / seminar relating to forest management to the technical experts and development agents. (2)-4 To present a training course/seminar on participatory planning, monitoring and evaluation to the technical experts and	<ul style="list-style-type: none"> Based on the results of the analysis, and on the discussions between the representatives of the target Gandas, districts and the Project, action plans were established for each village between April and October 2004 It was agreed in March 2005 that participatory forest management be conducted at Afalo and Chaftee and that livelihood support activities be conducted at each Ganda. Through the preparation of organizational charts and stakeholders' analysis, foresters and development agents' tasks were analyzed. Although general training needs for participatory forest management were identified by Japanese experts, ready-made training programs, not specific to this project, were mostly used due to time constraints of Japanese experts. The list of training given to CP is shown in Annex 6-c.

	<p>development agents,</p> <p>(2)-5 To hold a seminar for introducing participatory forest management to technical experts and development agents in other villages (Ganda) in Belete-Gera RFFPA.</p> <p>(2)-6 To present a training course on GIS and remote sensing to the technical experts of Oromia Regional Government.</p> <p>(2)-7 To present a training course on GPS survey methodologies to technical experts/development agents in Seka Chokorsa District and Gera District.</p> <p>(2)-8 To revise the plans, curriculums and materials of the trainings based on the recommendations made in a participatory evaluation of the training.</p>	<ul style="list-style-type: none"> • To be implemented • It is deemed premature to hold an open seminar inviting residents in Belete-Gera RFFPA under the condition that the decision to continue the Project has not been made. When the decision is made and the seminar is held, the Oromia Regional Government will explain to the participants about its intension to promote FMAs in Belete-Gera RFFPA. • Training of GIS was given to staff of District and Zone levels, instead of Region, since the Region was not able to assign C/P on GIS. Training on remote sensing was not conducted, since no appropriate C/P with sufficient technical qualification was available. • Training on how to collect data by using GPS was given to some of the C/P in Gera through On-the-Job training, while training on the theory and data-storing was not conducted. No GPS training was given to C/P in Seka Chokorsa ARDO. • A one day workshop was organized to present the results of training programs in December 2004, where experience of knowledge gained in the training was shared among participants of the workshop. Recommendations to the future training were discussed in the workshop.
<p>(3) Boundaries regarding forest management and land use in the target villages (Ganda) are agreed upon by all of the major stakeholders.</p>	<p>(3)-1 To organize a participatory three-dimensional modeling workshop inviting relevant stakeholders.</p> <p>(3)-2 To scan the information regarding the land use and boundaries demonstrated on the three-dimensional model into the GIS system.</p> <p>(3)-3 To examine over the boundaries regarding forest management and land use for authorization.</p>	<ul style="list-style-type: none"> • Teaching models of three dimensional model have been constructed by C/P and volunteers between March and July 2005. P3DM introduction video was translated into Afan-Oromo by C/P between December 2005 and January 2006. • Participatory three-dimensional modeling workshops were held in Afalo and Chaffee in February 2006. • The information regarding the land use and boundaries demonstrated on the three-dimensional model was incorporated into the GIS system by a Japanese expert. • The boundaries (outer-boundaries and inner-boundaries between homestead/farmland and forest) were examined and authorized as part of P-FMA. • Participatory 3D Model was used to promote WaBuB members' acknowledgement of the land use and to achieve consensus on provisional boundaries among themselves in Afalo. • The GPS survey was used to determine part of outer-boundaries, while locations of homestead / farmland were identified through extracted satellite image in Afalo. • The provisional boundaries for Chaffee Village were drawn on a map through the GPS survey. Afterwards, P3DM is being established in Chaffee to be used for monitoring and evaluation of P-FMA toward formalization of FMA.
<p>(4) Capacity of the local people in the target villages (Ganda) for natural resource management is strengthened.</p>	<p>(4)-1 To carry out rural development activities determined through the baseline survey.</p>	<ul style="list-style-type: none"> • Rural development activities were determined through the baseline survey and carried out. Livelihood support activities include provision of 200 modern beehives with accessories to each village, two grain mills were installed and one repaired. In Afalo, a hand dug well was constructed with villagers.

	<p>(4)-2 To provisionally set environmental standards and social codes over the forest use and management</p> <p>(4)-3 To assist the formulation of a provisional forest management plan by the community.</p> <p>(4)-4 To assist small-scale experiments /learning activities in the forest carried out by the local community.</p> <p>(4)-5 To assist the monitoring over the implementation of the provisional forest management plan carried out by the local community.</p>	<ul style="list-style-type: none"> • Environmental standards over the use of forest and social codes were examined by national consultants and reflected into the P-FMA in Afalo. Detailed examination of environmental standards and social codes was deemed unnecessary in Chaffee. • Provisional forest management agreements that stipulate rights and duties of WaBuBs and ARDOs on forest management with a boundary map attached were signed in Afalo and Chaffee in August 2005. <p>(This activity was incorporated into (4)-1)</p>
<p>(5) Appropriate system of participatory forest management in the Belete-Gera RFFPA are clarified.</p>	<p>(5)-1 To assist the elaboration of systems of participatory forest management by the local communities and concerned authorities based on the recommendations made through the monitoring.</p>	<ul style="list-style-type: none"> • To be implemented by the end of the Project period. • Subsidiary by-laws were approved by WaBuBs' General Assembly in April 2006 in Afalo and May 2006 in Chaffee. After compiling the results of monitoring, the by-laws and P-FMAs will be re-examined in the process of the formalization of FMA.
<p>(6) Information and lessons learned on participatory forest management are shared among the stakeholders.</p>	<p>(6)-1 To prepare materials regarding geographic information for facilitating the mutual understanding among the stakeholders.</p> <p>(6)-2 To share information and lessons learned over participatory forest management with other donors, NGOs, and the Federal Government through networks such as Participatory Forest Management Working Group (PFM-WG)</p> <p>(6)-3 To hold an open seminar inviting other donors, NGOs and the Federal Government.</p> <p>(6)-4 To organize a seminar for introducing project activities inviting community leaders from other villages (Ganda) in Belete-Gera RFFPA.</p> <p>(6)-5 To publish newsletters in Oromiffa and in English in order to facilitate information sharing on participatory forest management among local people.</p>	<ul style="list-style-type: none"> • Geographic information, including land use and vegetation maps, was prepared and handed over to the Oromia Regional Government. List of maps is shown in Annex 6-e. • The report on the baseline survey was distributed to other donors/projects including GTZ Adaba-Dodora, LUPO-GTZ, FARM AFRICA. • Project activities were presented on the occasions of workshops organized by other projects/donors.
	<p>(6)-3 To hold an open seminar inviting other donors, NGOs and the Federal Government.</p> <p>(6)-4 To organize a seminar for introducing project activities inviting community leaders from other villages (Ganda) in Belete-Gera RFFPA.</p> <p>(6)-5 To publish newsletters in Oromiffa and in English in order to facilitate information sharing on participatory forest management among local people.</p>	<ul style="list-style-type: none"> • An open seminar on the results of the Project will be held by the end of the Project period, inviting NGOs, donors, and Fed Government. • A seminar for introducing participatory forest management to technical experts, development agents and community leaders of other villages in Belete-Gera RFFPA is being considered to be organized by the end of the Project period. • Newsletter was issued once to disseminate the objective and the progress of the Project. • Project activities were broadcasted four times by the local TV, contributing to an enhancement of stakeholders' awareness.

List of Dispatched Japanese Experts and Mission Teams

Fiscal Year	2002/2003		2003/2004		2004/2005		2005/2006		2006
	Duration	Oct.- Preliminary Survey (Dec. 1-27)	April-March	April-March	April-March	April-March	April-March	April-March	Terminal Evaluation (June 4- —)
Mission team dispatchemnt				Follow-up Mission (Nov. 3-13)					
LONG TERM									
HISADA Shinichiro(Cihef Adviser/Infromation Management)					July 1, 2003 - Jun. 30, 2006				
SUGITA Eiji (Project Coordinator/PFM)					Sep. 2, 2003 - Sep. 1, 2006				
TANAKA Hiroyuki (Community Development)					Oct. 7, 2003 - Oct. 6, 2005				
NISHIMURA Tsutomu (Community Development)								Sep. 24, 2005 - Sep. 23, 2006	
SHORT TERM									
KAKINUMA Jun (Gender/Community Dev.)				Feb. 3 - April 4, 2004					
SASAKI Hideyuki (PLSD)				Feb. 3 - April 4, 2004					
MIZUNO Akinori (Biodiversity Conservation)							May 19 - Nov. 4, 2005		
KAKIZAKI Yoshiaki(PLSD ,Plan & Management)							July 16, 2005 - Jan. 20, 2006		
KAKIZAKI Yoshiaki(Community Development)								March 31 - Sep. 25, 2006	

List of Counterpart Assigned

		2003-2004			2004-2005			2005-2006																				
		Oct	Nov	Dec	Jan	Feb	Mar	Apr	May	Jun	Jul	Aug	Sep	Oct	Nov	Dec	Jan	Feb	Mar	Apr	May	June	July	Aug	Sep			
Regional Government																												
Project Director																												
1	Rural Land Natural Resource Administration Authority	Deputy Head																								Dr. Fikru Dekissa		
2	Rural Land Administration & Natural Resource & Irrigation Division	Division Head																								Bilila Badada		
3	Rural Land and Natural Resource development	Section Head																								Deribu Jamar		
4	Deputy Project Director	Department Head																								Diro Bulbula		
5	Forestry & Wild Life Department	Head																								Dr. Fikru Dekissa		
6	Forestry & Wild Life Department	Head																								Dr. Girma		
7	Ditto	Forrestry Leader																								Negusu Feyisa		
8	Ditto	Forrestry Leader																								Assela Ejo		
9	Ditto	Forrestry Leader																								Tibabu Tadese		
10	Ditto	Forest expert																								Tibabu Tadese		
11	Ditto	Forest expert																								Assela Ejo		
12	PPFM unit	Head																								Dr. Girma		
13	Planning and Project Department of RLA&NR&ID	Head																								Siraji Kedir		
Special Adviser																												
14	President Office	head, Planning Directorate																								Siraji Kedir		
Zone Administration																												
15	ARDO	Head																								Seashe		
16	ARDO	Natural Resource Expert																								Mohammed Said		
17	ARDO	vetnairen																								Bultuma Kemno		
Gera District																												
18	ARDO Gera District	Head																								Lishan Demleasie		
19																										Tamam A/Wari		
20																										Bultuma Qaroo		
21	Planning Land Use& Land Administration Dept.	Leader																								Merga Mihike		
22	Ditto	Surveyor																								Damlew Asfaw		
23	Natural Resource Development & Protection Dept.	Leader																								Gelehun Sine		
24	Ditto	Forest Development Forest Extension Expert																								Wagari Tasfaye		
25	Ditto	Forest Extension Expert																								Gelehun Felene		
26	Ditto	Agro Forestry Expert																								Sumary Melisse		
27	Ditto	Soil& Water Conservation Expert																								Garuma Below		
28	Ditto	Water Harvesting																								Nuru A/Jabir		
29	Ditto	Forest Development & Protection Technician																								Alenu Torele		
30	Development Agent in Gura-Afalo	Development Agent																								Dafis A/Gojam		
31	Development Agent in Gura-Naso	Development Agent																								Talhari Abate		
Seka-Choklusa District																												
32	RUHA Office in Gera District	Head																								Abeba Ayana		
33	Planning Land Use& Land Administration Dept. natural resource	Leader																								Daniel Kebera		
34	Development & Protection Dept.	Leader																								Aborah Robale		
35	Ditto	Wild Life Extension Expert																								Nechitu Legese		
36	Development Agent in Sabaka-Cadaye	Development Agent																								Gazahan G/Giorjis		
37	Development Agent in Sabaka-Dabiya	Development Agent																								Fikru		
38	BELETE FOREST	FOREST EXPERT																								Fikru		

List of Counterpart Training
(Activity 2-1: To carry out a task analysis of the technical experts and development agents and have an appraisal on their training needs.)
(Activity 2-2: To formulate training plans on each technical field through discussion with the trainees and their supervisors.)

No	Present Organization	Present Post	Name	October 2003 - September 2004												October 2004 - September 2005										October 2005 - September 2006					Total Days of Training
				2003-10	2004-10	2004-11	2004-12	2005-01	2005-02	2005-03	2005-04	2005-05	2005-06	2005-07	2005-08	2005-09	2005-10	2005-11	2005-12	2006-01	2006-02	2006-03	2006-04	2006-05	2006-06						
Regional Government																															
			Place																												
1	Rural Land Administration & Irrigation Division (BILAAN&ID)	Division Head	Bifla Bedada																												
2	Department of RL&NR&ID	Head	Siraji Kedir																												
3	Rural Land Natural Resource Administration Authority (BELNRAA)	Deputy Head (Project Director)	Dr. Fikru Deksisa																												
4	Forestry & Wild Life Department RLNR&A	Department Head	Diro Bulbula																												
5		(Deputy Project Director)	Negusu Feyisa																												
6		Forest Expert	Tibabu Tadese																												
7		Forest Expert	Assefa Ejp																												
Zone Administration																															
8	Natural Resource & Environmental Protection	Natural Resource Expert	Mohammed Seid																												
Gera District																															
9	RLNR Office in Gera District	Head	Lishan Demesie	2																											
10			Taman A/Wari	2																											
11			Bulutoma Qanoo	2																											
12	Planning Land Use & Land Administration Dept.	Leader	Merga Mitike																												
13	ditto	Surveyor	Darmlaw Aslaw	2																											
14		Leader	Getahun Sine	2																											
15		Forest Development	Wagari Tastyaw	2																											
16		Forest Extension	Getahun Fetene	2																											
17	Natural Resource Development & Protection Dept.	Agro Forestry Expert	Sumary Melese	2																											
18		Soil & Water Conservation Expert	Garuma Below																												
19		Water Harvesting Expert	Nuru A/Jobir																												
20		Forest Development & Protection Technician	Alemu Terefe																												
21	Development Agent in Gura-Akalo	Development Agent	Dafis A/Gojam																												
22	Development Agent in Gura-Naso	Development Agent	Taifan Abate	2																											
Seka-Choktusa District																															
23	RLNR Office in Gera District	Head	Abeba Ayana	2																											
24	Planning Land Use & Land Administration Dept.	Leader	Daniel Kebera	2																											
25	Natural Resource Development & Protection Dept.	Leader	Abonah Robale	2																											
26	ditto	Wild Life Extension Expert	Nechitu Legese	2																											
27	Development Agent in Sabaka-Dabive	Development Agent	Gazahan G/Giorjais	2																											
	Total Number of Participants			12	11	3	1	1	7	1	1	1	1	2	2	17	6	1	10	7	1	1	2	2	14	10	1	1	1	114	

List of Seminars and Workshops Conducted

	Seminars / Workshop Title	Purpose
2002/12	Forest and Peoples' life workshop	To raise awareness about forest and that's usage amongst Region, Zone, Woreda experts.
2003/11	Appreciated Inquiry /Planning and Action Learning workshop	To share the basic understanding so of "Positive Thinking" as project "motto" instead of problem solving method. For example, appreciation of "Good practice" and "Hall full" is applied for any kind of researches and activities.
2004/1-2004/3	JICA Group training Course (Forestry Project Counterparts' group training course) Mohammed Seid (PM)	To familiarize Japan, Japanese people and Forest policy in Japan to have some common view to the project. Also to understand basic knowledge on "PDM/PCM" and "how to work for the project as counterpart".
2003/12-2004/3	Baseline survey (OJT)	To conduct baseline survey in a participatory manner at the 2 villages with national consultants and JICA project team. Not only to find some fact from fields as forest usage and villager life with forest but also to improve counterparts' knowledge and skills about how to approach local people.
2004/ 3	JICA special individual training (Participatory Forest Management)	To meet and discuss with Technical advisers and JICA HQ about coming tree years of our project.
2004/4	Dr.Ekru Deksaia (Project Director) Computer users training	To train "how to use Computer" for daily activities and for future GIS training.
2004/8-2004/9	JICA group training (Forest /Forestry Project Counterparts' group training course) Mr. Negusse Feyissa (Forestry Team Leader)	To familiarize Japan, Japanese people and Forest policy in Japan to have some common view to the project. Also to understand basic knowledge on "PDM/PCM" and "how to work for the project as counterpart".
2004/8-2004/9	JICA Group Training (Participatory Local Social Development)	To understand about local social development which based on some lessons in Japanese. To understand most basic attitude for the expert to conduct development activities.
2004/9	Mr. Abebe Anava (Belete team leader) Participatory Based Natural Resources Management (International Institute of Rural Reconstruction/ Thailand, Mr. Daniel Kebede(Seka LUD T/L), Mrs. Lishaan Demisse (Gera NRD T/L)	To understand PBNRM method through 3rd party organization. To share information and view with participants from other countries. * The continuation of this course will be very strong motivation for young fresh
2004/10-2004/11	Participatory Action Planning	To adopt to the real situation after Baseline survey, The project worked to revise the Plan of Operation with Woreda experts through the discussion.
2004/11	Baseline survey in Gura-Afalo (OJT)	To conduct baseline survey with participatory manner at the Gura-Afalo village with national consultant with Gera team project staff who have experience through 1st baseline study in Gela-Naso.
2004/12	Information Sharing workshop (based on training in abroad such as JICA training, 3rd Country and Experience sharing Visit)	To share information based on training in abroad with counterpart staff and relevant Project as IFMP/GTZ, FRG/JICA, MARLD. Counterpart staff who has not yet got opportunity to go to abroad have general Idea of trainings.
2004/12	Experience sharing visit to KENYA (#1), Mr. Siraj Kedir (head, statics Oromia President Office), Mr. Mohammed Seid (PM)	To understand other JICA forestry project in neighboring country and try to find some essence which we can apply to our project.
2005/3	Study tour to GTZ project and Farm-Africa Project.	To visit A PFM project which is sponsored by USAID in KENYA.
2005/2-2005/4	Gender promotion in the Project	To visit existed Participatory Forest Management Projects such as IFMP/GTZ Bonga/Farm-Africa in Ethiopia.
2005/6	PFM-WORKING group ad hoc meeting on occasion of 5 of Higher Officials from Kenya Forestry Department visited our project site and GTZ project site.	To promote stakeholders to understand about PFM.
2005/8-2005/9	JICA Group Training (Participatory Local Social Development) Mr. Siraj Kedir (head, statics Oromia President Office)	To promote awareness of "Gender balance " amongst project staff with national consultant.
2005/8-2005/9	JICA Group training Course (Forestry Project Counterparts' group training course) Mr. Selashe (JIMMA zone ARDO head)	To share information on PFM in Ethiopia & Kenya. To discuss about PFM promotion in both country.
2005/9	Experience sharing visit to KENYA (#2) Mr. Bifaa Bedada (Project Director), Mr. Aba/Naga Mecha(JIMMA Administrator)	To understand about local social development which based on some lessons in Japanese. To familiarize to have necessity to have regional development guideline for Oromia region. To familiarize Japan, Japanese people and Forest policy in Japan to have some common view to the project. Also to understand basic knowledge on "PDM/PCM" and "how to work for the project as counterpart". To exchange information amongst counterparts between Ethiopia and Kenya. To participate "International Conference for Participatory GIS" and understand "how effective P-GIS can work for negotiation amongst stakeholders"

2005/8-2005/9	Community Based Natural Resources Management (International Institute of Rural Reconstruction / Philippines, Mr. Legasse (Seka ARDO HEDA), Mr. Fekade Zewed (GERA ARDO HERA)	To understand PBNRM method through 3rd party organization. To share information and view with participants from other countries. *The continuation of this course will be very strong motivation for young fresh
2005/10-2005/11	Participatory Monitoring and Evaluation Workshop for 1st joint monitoring for P-FMA	To understand "how to conduct P-M&E" for monitoring activities of WaBuB and to learn how to prepare subsidiary by-law of P-FMA
2006/1/2	"Regional Training course on Enhancing Adoption of Social Forestry in Africa" in Kenya, Mr. Aboneh Robele(Seka-chokorsa NRD T/L), Mrs. Sennany Meles(GERA District Forester)	To learn " how to enhance and adapt Social Forestry " which is developed and organized by Kenya JICA forestry project. To exchange information amongst participants from other countries in Africa.
2006/4-2006/5	Participatory Monitoring and Evaluation Workshop for the 2nd joint monitoring for P-FMA	To understand "how to conduct P-M&E" for monitoring activities of WaBuB
2006/4-2006/5	GIS basic users' training	To understand and have practice in order of utilize digital geographic data. It is prepared by Information System Services (private company/ sole agent to distribute GIS Arc view soft ware).
2006/5	Self-evaluation workshop	To review project activities conducted and assess achievements, and discuss lessons learned by all project counterparts

List of Maps Produced

No	Name of Maps	Descriptions	Quantity
1	Digitized Compartment Map of Belete-Gera Regional Forest Priority Area	Source of data from Compartment Map produced by Development study in South western Ethiopian Forest Conservation (1998JICA)	1
2	Digitized Land use and Vegetation Map of Belete-Gera Regional Forest Priority Area	Source of data from Land use and Vegetation Map produced by Development study in South western Ethiopian Forest Conservation (1998JICA)	1
3	Digitized Soil Map of Belete-Gera Regional Forest Priority Area	Source of data from Soil Map produced by Development study in South western Ethiopian Forest Conservation (1998JICA)	1
4	Map of District Administrations in Seka-Chekorsa and Gera	Source of data 1: 50k map of District Administration Boundary in Seka-Chekorsa and Gera produced by Ethiopian Statistical Authority	1
5	Map of Belete-Gera Regional Forest Priority	1:100k scale; 42" x 42" size of printout	1
6	Map of Regional Forest Priority Areas in Jimma Zone Administration	1:250k scale; 42" x 42" size of printout	1
7	Map of Provisional Forest Management with WaBuB in Chaffee sub-village	1:10k scale; 36" x 36" size of printout	1
8	Map of Provisional Forest Management with WaBuB in Afalo sub-village	1:10k scale; 36" x 36" size of printout	1
9	Map of Afalo Sub-village in Gera Forest	1:10k scale; A4 size of printout	1
10	Map of Afalo Sub-village with P3DM in Gera	1:10k scale; A4 size of printout	1
11	Map of Chaffee Sub-village in Belete Forest	1:10k scale; A4 size of printout	1
12	Map of Chaffee Sub-village with GPS points in Belete Forest	1:10k scale; A4 size of printout	1
13	Base (contour line) map for Afalo Sub-village in Gera Forest	1:3k scale; 84" x 84" size of printout	2
14	Base (contour line) map for Chaffee Sub-village in Belete Forest	1:3k scale; 84" x 42" size of printout	1
15	Electrical Contour Map in Sigmo	Source of data 1: 50k Topographical Map from EMA Sheet No. 0736A1	1
16	Electrical Contour Map in Chira	Source of data 1: 50k Topographical Map from EMA Sheet No. 0736A3	1
17	Electrical Contour Map in Mechi	Source of data 1: 50k Topographical Map from EMA Sheet No. 0736A4	1
18	Electrical Contour Map in Agaro	Source of data 1: 50k Topographical Map from EMA Sheet No. 0736B1	1
19	Electrical Contour Map in Ambuye	Source of data 1: 50k Topographical Map from EMA Sheet No. 0736B2	1
20	Electrical Contour Map in Seka	Source of data 1: 50k Topographical Map from EMA Sheet No. 0736B3	1
21	Electrical Contour Map in Jima	Source of data 1: 50k Topographical Map from EMA Sheet No. 0736B4	1
22	Electrical Contour Map in Bonga	Source of data 1: 50k Topographical Map from EMA Sheet No. 0736C1	1
23	Electrical Contour Map in Gojeb	Source of data 1: 50k Topographical Map from EMA Sheet No. 0736C2	1
24	Electrical Contour Map in Kaka Idget	Source of data 1: 50k Topographical Map from EMA Sheet No. 0736D1	1
25	Electrical Contour Map in Metoso	Source of data 1: 50k Topographical Map from EMA Sheet No. 0736D2	1

List of Machinery and Equipment Provided

No	ITEM NAME	Qty	Cost ('000 yen)	Specification	Main Purpose	Place
1	4 wheel drive Vehicle (LC type 105)	3	13,500	TOYOTA LC TYPE 105,GX,Diesel Engine, 8 seats, wagon, roof carrier	Transportation between each project office and project sites	AA(1),JIMMA(2)
2	4 WD HARDTOP (LC Type 75)	2	6,800	TOYOTA LC TYPE 75., 13 seats, Hardtop, parcel and seat arrangement	to support Daily work and extension work for woreda expert	BELETE(1), GERA(1)
3	Satellite Mobile phone	3	900	Satellite Mobile Phone (IRIDIUM)	Communication System between Experts especially for emergency case	AA(1),JIMMA(2)
4	Software for Remote sensing	1	2,300	Visual analyzing software for remote sensing	for 2D/3D analysis /data base for GIS with visual image	JIMMA
5	Software for GIS	4	1,560	GIS data analyzing software	for visualization of forest area and analysis/vegetation/condition	JIMMA(2) BELETE(1),GERA(1)
6	GPS survey equipment	1	2,529	VERY HIGH SPEC. GPS with WAAS. Durable for use in the forest. With color TFT screen for outdoor use.	for natural resource monitoring survey (boundary/land-survey/forest GIS)	JIMMA
6a	Serial chip for field data and power supply	1	25	Accessory for No.6	Ditto	JIMMA
6b	Cigarette Adaptor	1	25	Ditto	Ditto	JIMMA
6c	extension Antenna	1	5	Ditto	Ditto	JIMMA
6d	Ground-plain for POLE setting up	1	20	Ditto	Ditto	JIMMA
6e	Special CAP for antenna-holding	1	10	Ditto	Ditto	JIMMA
6f	Carrying Case	1	10	Ditto	Ditto	JIMMA
6g	MODEM Cable	1	8	Ditto	Ditto	JIMMA
6h	Backpacking KIT	1	62	Ditto	Ditto	JIMMA
7	GPS surveying for BASE	1	2,089	GPS base system, reference for Differential adjustment	GPS base and File management system	JIMMA
7a	AC Adaptor	1	21	Accessory for No.7	Ditto	JIMMA
7b	CABLE FOR ANTENNA	1	62	Ditto	Ditto	JIMMA
8	GPS (mobile)	3	144	MOBIL GPS with WAAS	photographing with GPS data	JIMMA
8a	GPS Serial converter	3	12	Accessory for No.8	connect GPS with PC	JIMMA
8b	GPS car adaptor	3	12	Ditto	Ditto	JIMMA
8c	GPS carrying case	3	9	Ditto	Ditto	JIMMA
8d	GPS windshield mount	3	18	Ditto	Ditto	JIMMA

8e	GPS Battery charger Kit	3	15	Ditto	Ditto	JIMMA
8f	GPS Ni-MH battery	6	12	Ditto	Ditto	JIMMA
8g	GPS workmap	3	72	Ditto	Ditto	JIMMA
9	High Spec PC (for remote sensing)	1	500	cpu:2.6GHz memory:2GB (400MHz) HD:120GB, DVD+RW 17"lial monitor Modem:56.6Kps USB memory key (64MB), Optical Mouse, Windows XP Professional, MS-OFFICE XP Pro, English Keyboard	GIS image editing / planning / reporting	JIMMA
10	DESK TOP PC (GIS)	2	400	CPU:2.60GHz memory:1GB (400MHz) HD:120GB DVD+Multi Drive 15"lial monitor Modem:56.6Kps USB memory key (64MB), Windows XP Professional, MS-OFFICE XP Pro, Eng Key-board	GIS image editing / planning / reporting	AA(1),JIMMA(1)
11	LAPTOP PC (Research, Suvery,GIS)	4	880	CPU:2.60GHz memory:512mb (400MHz) HD:40GB DVD/CD-RW, 15" SXGA monitor Modem:56.6Kps USB memory key (64MB), windows XP Professional,MS-OFFICE XP Pro.	Planning / reporting	AA(1),JIMMA(1), BELETE(1),GERA(1)
12	Collor Plotter (rijid)	1	950	A4 format, 2880x1440dpi, 7 colors, Thick paper(1.5mmOK), clear printing for normal paper, OS - English manual book	color printing for GIS image/ education materials / poster	J
13	Collor laser printer	1	160	A4format, B/W 16ppm, Collor4ppm, 64MB,OS:English manual book	color printing for GIS image/ education materials / poster	J
14	laser printer	2	100	A4format, 19ppm, 8MB memory, 1200dpi,high resolution, OS - English manualbook	planning & reporting	J
15	Multi function printer (Scanner, Fax,printer, Copy)	4	300	Photocopy,scanner,printer,FAX,A4 FORMAT,1200x1200dpi	scanning documents/ copy / printing / fax	AA(1),JIMMA(1), BELETE(1),GERA(1)
16	Digital Camera	1	170	5M PIXEL, 4X ZOOM,F.2.0-3.0, A.E. (CENTER,SPOT,EVALUATION) , SHATTER SPEED (15-1/2000), ENG. MANUAL CF CARD 128MB INCLU.)	recording visual image of filed work ,etc.	AA
17	Digital Camera (for GPS)	3	360	4M PIXEL,ATTACHE WITH POTABLE GPS	photographing field data with mobile GPS	JIMMA(1),BELETE(1),GERA(1)
17a	Compact Flash card	3	10	ACCESARY FOR NO.17(CF CARD128MB)	Ditto	JIMMA(1),BELETE(1),GERA(1)
17b	PC card adaptor	3	3	Ditto	Ditto	JIMMA(1),BELETE(1),GERA(1)
17c	SOFTCASE	3	3	Ditto	Ditto	JIMMA(1),BELETE(1),GERA(1)
18	LCD PROJECTOR	2	660	A4 FILE SIZE, Max200,1400ANS,lessthan 3kg, MULTI-VIDEO INPUT(NTSC,PAL,SECAM) W/T SCREEN	for workshop/seminar	AA(1),JIMMA(1)
19	DIGITAL PHOTOCOPIY MACHINE	1	1,800	DIGITAL PHOTOCOPIY 225ppm,BOTH SIDE,A3/4 FORMAT SKALE 2 TRAYS, DADF-H1 (12000ETB) FINISHER-J1 (12500ETB), 3500ETB) PRINTER BOARD (30000ETB) .	photocopy/duplicate of report / training materials	JIMMA(1)
20	SOLAR GENERATING SYSTEM(2), GENERATOR(1)	3	2,560	SOLAR GENERATING SYSTEM WITH ACDC COVERTOR	Back up power supply	JIMMA(1),BELETE(1),GERA(1)
21	UPS	4	300	Power back-up system	set for all desk-top PC for protection	AA(1),JIMMA(1), BELETE(1),GERA(1)
22	AUDIO VISUAL EQUIPMENT	3 set	450	21" TV, VTR, Digital Satellite Receiver, Parabols Antenna	for training / seminar/ workshop	JIMMA(1),BELETE(1),GERA(1)

2004/2005

23	FLAT BASE CARGO TRACK	2	5,258	4 cylinders 3,600cc/5 speed / 3ton / 3 seats / flat cargo space	support dairy activities for women AFDO (seedling raising / distribution)	BELETE(1), GERA(1)
24	MOTORBIKE	10	3,878	single cylinder 125CC/ 2 stroke engine / helmet/ luggage box	support dairy activities of counterparts (foresters / development agent)	JMA(2),BELETE(4),GERA(4)
25	GRINDING MILL	2	598	200~300kg/hour/ diesel engine with 25PS/ stone size 600mm	to develop users group and encourage women's participation through minimize their dairy work	BELETE(1), GERA(1)
26	Improved beehive with accessories	400	2,777.58	3layers Ethiopian type improved beehive with protection gear (mask,glove)	support income generation activities through agricultural extension skem	BELETE(200),GERA(200)
27	casing mole	4	218.4		support income generation activities through agricultural extension skem	BELETE(2),GERA(2)
28	wax stamper	2	103.45	aluminium wax stamper for the non tap-water supply	support income generation activities through agricultural extension skem	BELETE(1),GERA(1)
29	honey excluder	4	145.6	stainless steel made 3 combs honey extractor	support income generation activities through agricultural extension skem	BELETE(2),GERA(2)

List of Facilities Constructed

No	Name of Facilities	Descriptions	Location	Quantity
1	Participatory Forest Management Training Center in Jimma	One conference hall, Three offices, one whasing room	Jimma	1
2	Participatory Forest Management Extension Center in Belete Forest	One conference hall, Three offices, one Store room, one whasing room	Sebaka Dabiye, Shabe-Sombo	1
3	Participatory Forest Management Extension Center in Gera Forest	One conference hall, Two offices, Two washing room, One kitchen & dinning, Four bed rooms	Chira, Gera	1
4	Access Road Rehabilitation between Chira village and Naso River bridge in Afalo Sub-village	25 kilometer distance from Chira village to Naso River Bridge Red by clay soil road	Chira - Naso River	25km

Methodology of Questionnaire Survey to Local People

1. Purpose of the survey

To collect information from both WaBuB members and non-members in order to review relevance of the Project by assessing needs of local people and to identify positive and negative impact of the project activities.

2. Target population

1) Belete area: 33 people

- WaBuB Chaffee members: 10 people (3 people from the executive committee, 7 people from member, including 3 women)
- Residents living in adjacent to Chaffee sub-village (residents of Meti Jiga): 13 people (10 men and 3 women)
- Residents living in Sebaka Dabiye village: 10 people (7 men and 3 women)

2) Gera area: 41 people

- WaBuB Afalo members (Afalo residents): 11 people (3 people from the executive committee, 8 people from member, including 3 women)
- WaBuB Afalo members (seasonal users): 10 people (including 1 executive committee member)
- Residents living in adjacent to Afalo sub-village: 10 people (7 men and 3 women)
- Residents living in neighboring villages: 10 people (7 men and 3 women)

3. Period of questionnaire survey conducted

1) Belete area: May 27 ~ 28, 2006

2) Gera area: June 1 ~ 3, 2006

4. Methods of questionnaire survey

- Two types of questionnaires were prepared for WaBuB members and non-members.
- District ARDO staff conducted survey to local people by directly interviewing them and filled in the questionnaire accordingly.

5. Summary of questions asked to local people

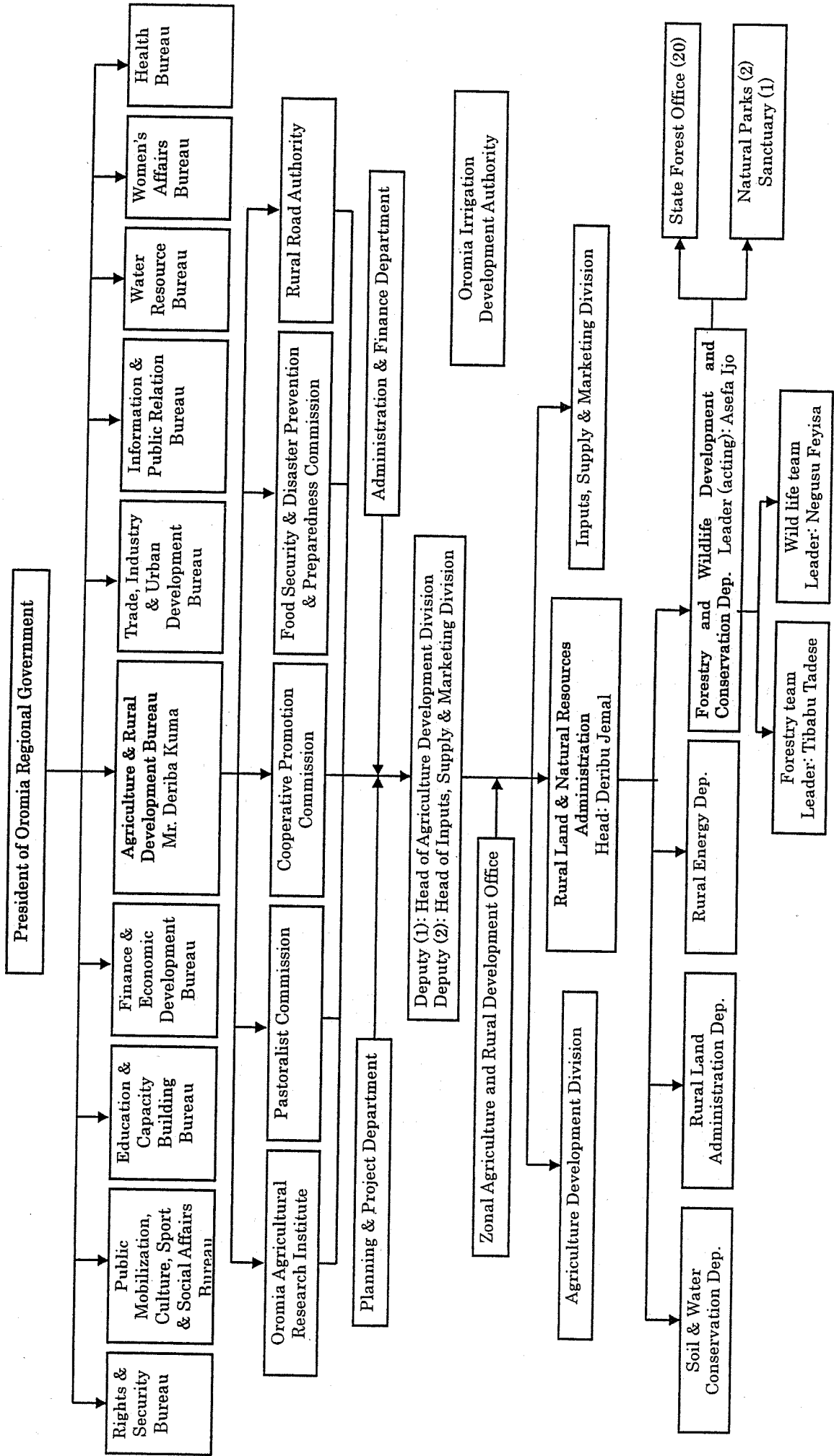
1) Questions to WaBuB residents and seasonal users:

- Changes of income and the ways of utilization of the forest (what and why) after P-FMA was introduced in August 2005
- Conflicts with other WaBuB members, seasonal forest users, or non-members of WaBuB
- Benefit from livelihood activities (Grain mill, Improved beehives, Community well in Afalo) provided by the project
- Formalization/modification of P-FMA in August 2006
- Comments on forest utilization or WaBuB/P-FMA

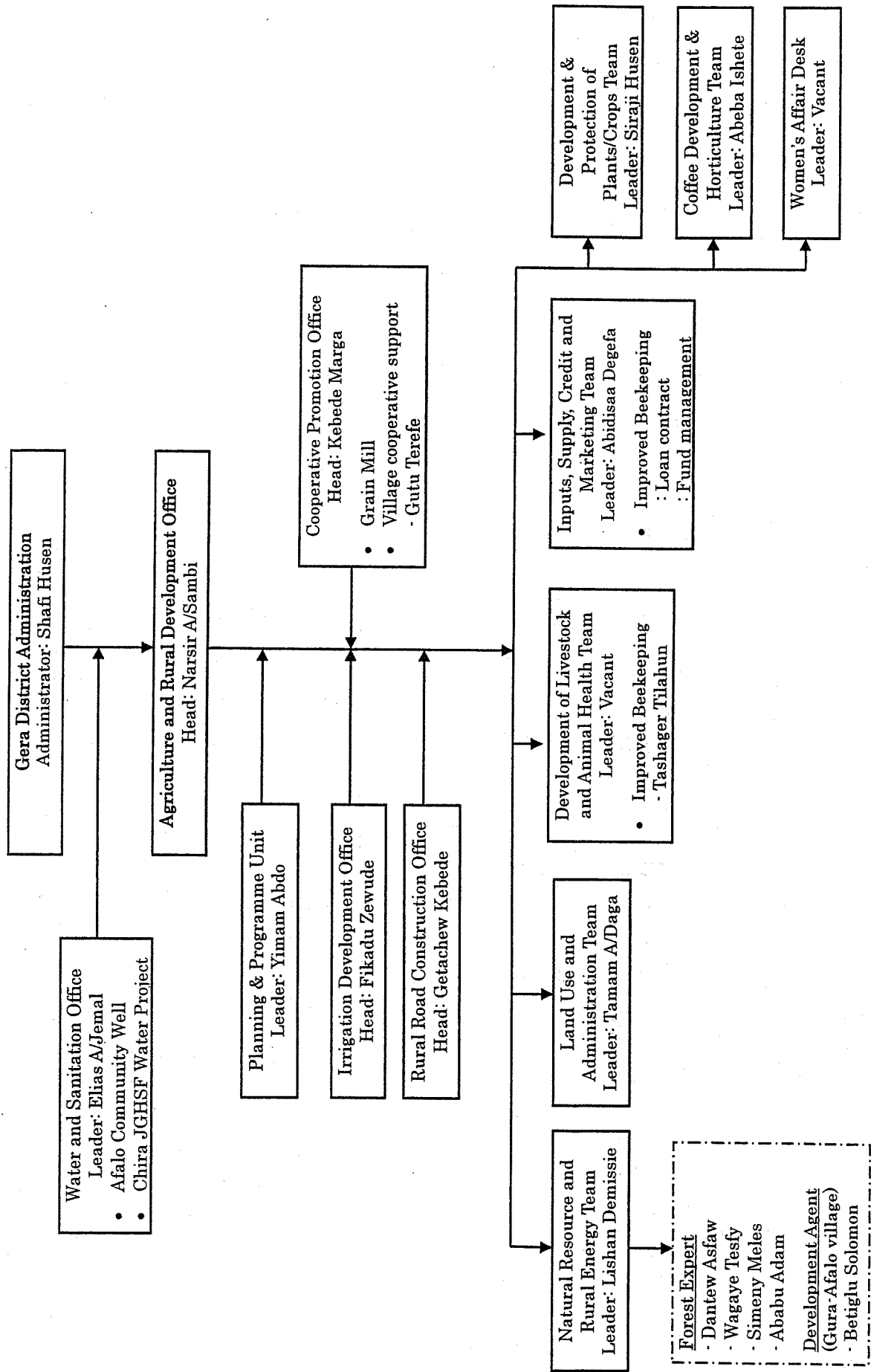
2) Questions to non-members of WaBuB:

- Knowledge on WaBuB and its activities
- Advantages and disadvantages of Forest Management Agreement
- Intention to form a group/association for forest management (such as WaBuB)
- Conflicts with existing WaBuBs in terms of forest management and utilization

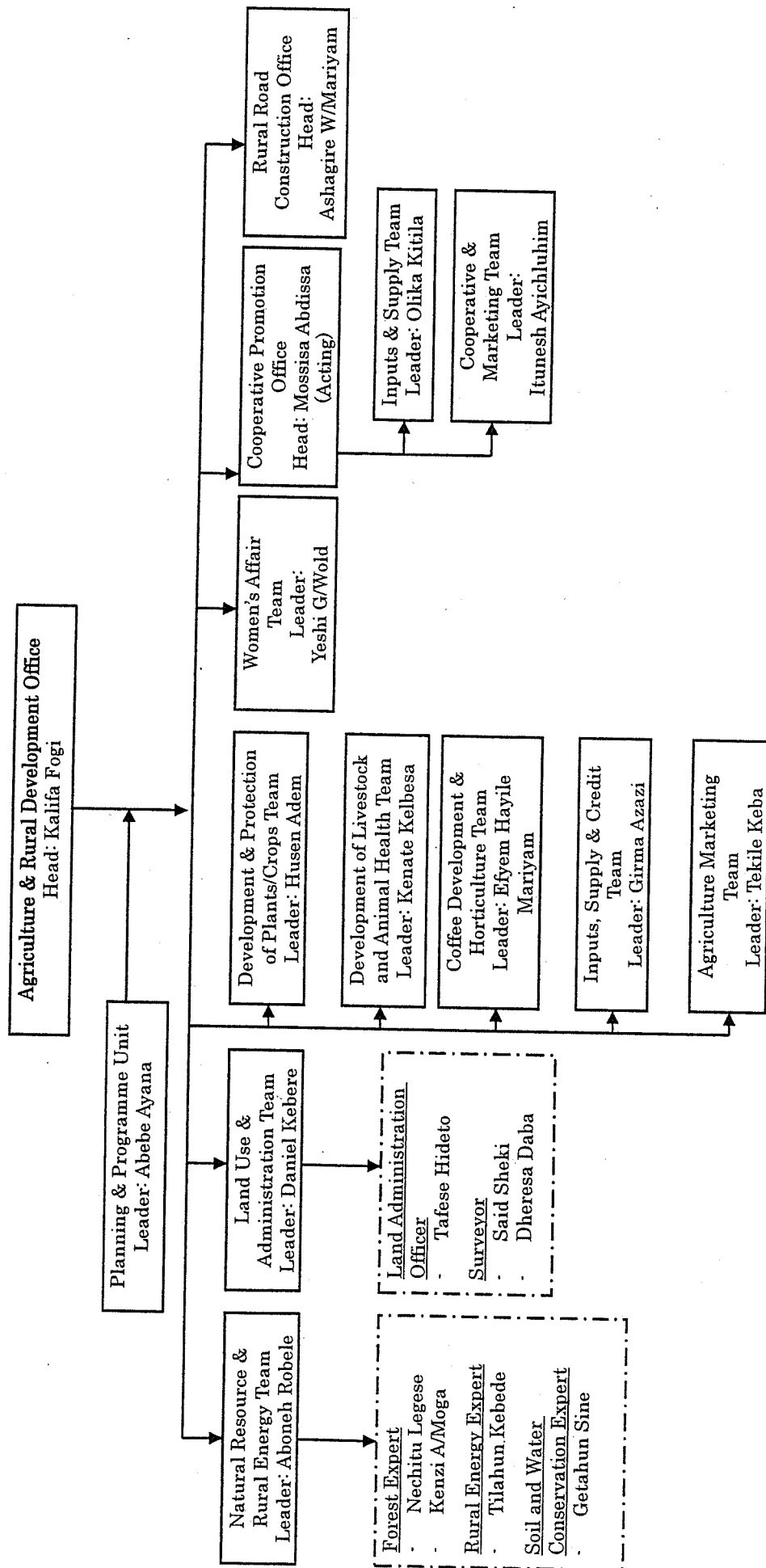
Organizational Structure Agriculture and Rural Development Bureau, Oromia Regional Government



Organizational structure of Agriculture & Rural Development Office (ARDO) in Gera District



Organizational Structure of Agriculture & Rural Development Office (ARDO) in Seka Chokorsa District



Final Evaluation of the Project on Participatory Forest Management Project
in Belete-Gera Regional Forest Priority Area in the Oromia Region
of the Federal Democratic Republic of Ethiopia

Questionnaire to the Project Team (OARDO/ARDOs/JICA)

Dear Sir/Madam,

This is a questionnaire for the final evaluation of the Project on Participatory Forest Management Project in Belete-Gera Regional Forest Priority Area in the Oromia Region of the Federal Democratic Republic of Ethiopia by OARDO/ARDOs /JICA. The Project, with the purpose of achieving sustainable forest management in Belete-Gera RFPA, started in October 2003 for the duration of three years to September 2006. With less than five months remaining before the termination of the Project, we are now evaluating the achievements of the Project from various perspectives. The Ethiopian and Japanese evaluation teams will conduct the evaluation jointly.

This questionnaire is addressed to the project team of OARDO/ARDOs /JICA; please provide answers for each item in consultation with the responsible persons.

The questions stated below are formulated based on the five evaluation criteria, i.e. relevance, effectiveness, efficiency, impact and sustainability. Please attach supporting data and/or materials, if available.

Thank you for your cooperation.

JICA Evaluation Team

1. Questions about Relevance

- 1) Is forest conservation through a participatory approach still a priority in Ethiopia and Oromia Region? Please provide relevant documents that state the State's or Region's policy toward forest conservation and its approaches, if there are some changes after September 2003.
- 2) Is the Project consistent with local people's needs? Please provide the results of an interview survey on the local people's views on the Project and the WaBuB approach, if any.
- 3) Please provide information on local people's interest in signing other FMAs.

2. Questions about Effectiveness

- 1) How much are the participation rates of the Affalo and Chaffee's villagers in WaBuB?
- 2) Please provide the Project Team's views on the results of the monitoring surveys on WaBuB. Please also explain how to verify the monitoring items provided in the monitoring surveys.

3. Questions about Efficiency

<Input by the Japanese Side>

- 1) Have the number, capability, duration and timing of the dispatch of Japanese long-term and short-term experts been appropriate?
- 2) Have the number, type and timing of the provision of the equipment and materials been appropriate? Have the equipment provided by the Project been properly maintained?
- 3) Have the type and timing of the construction of infrastructure been appropriate?
- 4) Have the number, contents, duration and timing of C/P training in Japan been appropriate? How have the

trainees utilized and disseminated the results of training in the Project?

- 5) Has the budget for local activities financed by the Japanese side sufficient?

<Input by the Ethiopian Side>

- 6) Has the assignment of C/P been sufficient for the smooth implementation of the Project? If not, what are the reasons and possible solutions in the future?
- 7) Has the provision of the land and facilities been appropriate?
- 8) How much was the amount and timing of local cost disbursed for the Project? Please provide its breakdown.

<Joint Efforts>

- 9) Has communication between Japanese experts and C/P been appropriate in terms of frequency and quality? Please describe if there are some difficulties.
- 10) Was the Joint Coordination Committee held in a timely manner? How have the follow-ups been conducted to address the issues raised in the Committee?
- 11) Has the Project made sufficient efforts to cooperate with relevant organizations in order to share information and lessons learnt on participatory forest management?

4. Questions about Impact

- 1) What impact has the Project given to local people's income? Please provide the results of surveys, if any. What are the future perspectives in this regard?
- 2) Are there any conflicts between WaBuB members and non-members?

5. Questions about Sustainability

- 1) Are there any C/P personnel who have left the Project up until now? What measures are OARDO and ARDOs going to take so that all C/P personnel will be retained after the end of the Project in order to make the extension of FMAs possible?
- 2) Please provide OARDO's and ARDOs' organization charts, and describe the interrelations between departments and units related to the Project.
- 3) Has the Project so far experienced any financial problems that have more or less hindered the Project implementation? Will the budget allocation to OARDO and ARDOs remain sufficient to sustain the Project activities?
- 4) What are the Project's perspectives on the future possibility of revenue-sharing between WaBuB and the local administration?
- 5) How has the Project contributed to the strengthening of OARDO's and ARDOs' planning, implementing and evaluating capacity? What are OARDO's and ARDOs' perspectives on the extension of WaBuB approaches to other areas on their own? If the capacity is not sufficient, please describe what must be done.
- 6) How has the Project strengthened OARDO's and/or ARDOs' technical capacity to operate and maintain the equipment provided by the Project?

Final Evaluation of the Project on Participatory Forest Management Project
in Belete-Gera Regional Forest Priority Area in the Oromia Region
of the Federal Democratic Republic of Ethiopia

Questionnaire to Counterpart(C/P) Personnel

Dear Sir/Madam,

This is a questionnaire for the final evaluation of the Project on Participatory Forest Management Project in Belete-Gera Regional Forest Priority Area in the Oromia Region of the Federal Democratic Republic of Ethiopia by OARDO/ARDOs /JICA. The Project, with the purpose of achieving sustainable forest management in Belete-Gera RFPA, started in October 2003 for the duration of three years to September 2006. With less than five months remaining before the termination of the Project, we are now evaluating the achievements of the Project from various perspectives. The Ethiopian and Japanese evaluation teams will conduct the evaluation jointly.

In this questionnaire we will ask you various questions for the purpose of evaluating the performance, achievements and implementation process of the Project based on the five evaluation criteria, i.e. relevance, effectiveness, efficiency, impact and sustainability. Although the analysis of collective answers might be presented in the report, the answer of each respondent will be kept confidential.

This questionnaire is designed to be responded by every C/P personnel as individual, so please answer the questions based on your own view or opinion. Fill in the questionnaire by ticking boxes and giving details as instructed. Please make answers as specific and concrete as possible. You may skip some questions if they require information difficult to disclose for secrecy reasons, or irrelevant to your activities in the Project.

It would be highly appreciated if the filled-in questionnaire could be returned to JICA consultant.

Thank you for your cooperation.

JICA Evaluation Team

<i>Name of Organization and Position</i>	
<i>Name of Respondent</i>	
<i>Your Field in the Project</i>	

1. Questions about Relevance

1) Do you think that the Project is contributing to forest conservation?

Yes, very much Yes, but not much No Other

Please provide the reasons/suggestions

2) Do you think that the Project is consistent with local people's needs?

Yes, very much Yes, but not much No Other

Please provide the reasons/suggestions

2. Questions about Effectiveness

1) Do you think that the Project as a whole has achieved (or is about to achieve) its purpose, "Participatory forest management is sustainably put in place in target villages (Ganda) in Belete-Gera RFPA "?

- Yes, very much Yes , to some extent No Other

Please provide the reasons/suggestions

2) In your field, do you think that your technical / managerial capability has become good enough to achieve the Overall Goal after the end of the project period?

- Yes, very much Yes, to some extent No Other

Please provide the reasons/suggestions

3. Questions about Efficiency

1) Do you think that your communication with Japanese Experts has been good and frequent enough?

- Good enough Relatively good Not so good Bad Other

Please provide the reasons/suggestions

2) Has Japanese Experts' approach/method of technology transfer been appropriate?

- Very appropriate Appropriate Not appropriate Other

Please provide the reasons/suggestions

3) Do you think that the number, technical capability, and management ability of Japanese Experts (both long-term and short-term) have been good enough for technology transfer?

- Good enough Relatively good Not so good Bad Other

Please provide the reasons/suggestions

4) If you received C/P training in Japan, how did you find the training in upgrading of your capability?

- Excellent Satisfactory Not satisfactory Other
 Not received C/P training in Japan

Please provide the reasons/suggestions

5) If you received C/P training in Japan, how have you utilized techniques/skills/knowledge that you acquired in Japan, in the Project after you returned?

- Very much A little Not at all Other
 Not received C/P training in Japan

Please provide the reasons/suggestions

6) Do you think that all the machinery and equipment were provided adequately, in terms of their type, volume and timing? If not, describe the problems and their reasons.

- Yes Yes in general, but some problems No

Please provide the reasons/details

4. Questions about Impact

1) Do you think that the Project is contributing to the increase of local people's income?

- Very much To some extent No Other

Please provide the reasons/suggestions

2) Have you observed any kind of positive or negative impact of the Project, besides direct and expected effects?

Please specify

5. Questions about Sustainability

1) In your field, do you think that you and your colleagues have acquired enough technique/knowledge so that WaBuB in Affalo and Chaffee will be properly maintained and Forest Management Agreements will also be signed in other areas?

Please provide the details and suggestions

6. Others

Please provide other comments / suggestions on the Project.

Thank you very much for your cooperation.

**エチオピア国ベレテ・ゲラ参加型森林管理計画終了時評価調査
長期専門家個人向け質問票**

専門家各位

標記プロジェクトの終了時評価に関する情報収集の一環として、本質問票への回答をお願いいたします。質問は、(1)妥当性、(2)効果、(3)効率性、(4)インパクト、(5)持続発展性の5項目で構成されております。ご回答いただきました結果は、他の方法により収集した情報とともに、プロジェクトの実績・実施プロセスおよび5項目評価の判断材料とさせていただきますと考えております。なお、プロジェクトとして統一的な回答を頂ける設問や回答が困難な設問に関しては、回答を省略していただいて結構です。

つきましては、ご回答を「評価分析」担当コンサルタントにお渡しいただけますと幸いです。お忙しいところ大変急なお願いで恐縮ですが、ご協力いただけますようお願い申し上げます。

終了時評価調査団

専門家氏名	
指導内容	

1. 実施プロセスに関する質問

- 1) 担当分野のC/Pとの間のコミュニケーションは頻度・方法・内容の観点から見て適切だったと思いますか？ より一層適切なコミュニケーションとするにはどうすべきであったと考えますか？

良好に確立 やや確立 未確立 その他

理由及び改善方法

2) 実施機関により、本プロジェクト終了後の運営方針・事業計画は策定されていますか？ 確立されている場合はそれら方針・計画が有効なものかどうか、未確立の場合はその理由について記入ください。

良好に確立 確立途上 確立の動きなし その他

理由

3) 本プロジェクト全体の目的やデザイン (PDM) を担当 C/P は完全に理解していますか？

完全に理解 ほぼ理解 あまり理解せず その他

理解が不足している点

4) 担当分野の C/P とのプロジェクト活動を通じて、概して C/P の意識・行動に変化が見られましたか？

良い変化があった 特に変化はなかった 悪い変化があった その他

変化の内容

5) 担当 C/P への技術移転方式/方法は適切だったと思いますか？技術移転をより効果的にするためには、どのようにすればよかったと考えられますか？

適切 ほぼ適切 不適切 その他

理由・改善方法

6) 担当 C/P への技術移転に当たってどのような工夫をしましたか？

2. 妥当性に関する質問

1) 本プロジェクトのデザインは、森林保全に合致したものでしたか？

完全に合致 ほぼ合致 あまり合致せず その他

理由

2) 本プロジェクトのデザインは、住民のニーズに合致したものでしたか？

完全に合致 ほぼ合致 あまり合致せず その他

理由

3. 有効性に関する質問

1) プロジェクト目標の「ベレテ・ゲラ森林優先地域内のプロジェクト対象村落において、住民が参加型森林管理を継続的に実施する」は達成されつつありますか？ PDM に記された 3 つの目標達成指標「参加型森林管理活動を継続的に実施する住民数」「参加型森林管理活動により、減少する森林の蚕食の程度」「対象村落とオロミア州政府との間で締結される『森林管理契約』の件数」に照らしてご回答ください。

目標通りに達成 ほぼ達成 あまり達成されていない その他

理由

- 2) プロジェクト目標の達成を阻害した要因があったとすれば、それは何ですか？その改善策としては、どのようなことが考えられますか？

理由・改善方法

4. 効率性に関する質問

- 1) 専門家（長期・短期）の派遣人数、専門分野、派遣期間、派遣タイミングは技術移転のために適切でしたか？ 本プロジェクトの実施を更に効率的にするには、専門家の派遣をどのようにすべきでしたか？

非常に適切 ほぼ適切 不適切 その他

理由・改善方法

- 2) 日本側供与機材・施設・インフラの種類・量・設置時期はプロジェクトの効率的な実施のために適切でしたか？必ずしも適切でない場合、どのようにすれば、より適切にできたと思いますか？

非常に適切 ほぼ適切 不適切 その他

理由・改善方法

3) エチオピア政府は土地、設備、資機材等の供与を適切に行っていましたか？プロジェクトをより効率的にするためには、どのようなインプットを求めるべきであったと感じられますか？

非常に適切 ほぼ適切 不適切 その他

理由・改善方法

4) 研修員の受入人数・分野・研修内容・研修期間・受入時期は適切でしたか？ より効果的な研修のためには、研修生の受入をどのようにすべきと考えますか？

非常に適切 ほぼ適切 不適切 その他

理由・改善方法

5) C/P の人数・配置状況・能力はプロジェクト実施にあたって適切でしたか？ 今後プロジェクトが継続する場合に、エチオピア政府の対応に限界がある一方で一層効率的な実施を行うには、どのような具体的な改善策がありますか？

非常に適切 ほぼ適切 不適切 その他

理由・改善方法

- 6) 日本側によるローカルコストの負担額・内容・タイミングはプロジェクトの実施のために適切でしたか？
一層効率的な実施とするには、どのような改善方法がありますか？

非常に適切 ほぼ適切 不適切 その他

理由・改善方法

- 7) 合同調整委員会はプロジェクトの効率的な実施に役立ったと考えられますか？ プロジェクトの効率性を更に向上させるには、合同調整委員会をどのように活用したらよいと考えますか？

非常に役立った ほぼ役立った あまり役立たず その他

理由・改善方法

- 8) 他機関との連携がありましたか？他機関との連携によってプロジェクトがより効率的に実施できましたか？またプロジェクトが継続する場合に、どのような連携を求めるのがよいと思いますか？

非常に効率的になった やや効率的になった 効率は変わらず
連携自体がなかった その他

理由

5. インパクトに関する質問

1) 本プロジェクトは、対象村落外の住民に認知されていますか？認知を更に高めるために、どのようなことをやるべきであったか、またプロジェクトが継続する場合に、認知を高めるためにどのような方策をとればよいと思いますか？

- 強く認知されている 多少認知されている あまり認知されていない
ほとんど認知されていない その他

理由・改善方法

2) WaBuB の参加住民と非参加住民との間に、対立はありませんか？

- 既にある 近い将来あると思う 当面ないと思う その他

ご意見

3) 村落振興活動は、住民の収入増加をもたらしましたか？より効果的な村落振興活動のためには、どのようなことを行えばよかったか、また、今後どのようなフォローアップを行うのがよいと思いますか？

- 収入が増加した 近い将来増加すると思う 増加しないと思う その他

ご意見

4) 上記項目以外で、本プロジェクトの実施がもたらしたインパクトはありましたか？ 制度、環境、経済、社会面等において、何らかの影響があればお知らせください。

6. 持続可能性に関する質問

1) 実施機関は、プロジェクト期間終了後に自力で森林管理契約の締結や村落振興活動を進めていくことができると思いますか？ 困難である場合は、何をしたら可能になると思われますか（組織面、技術面、制度面、財政面など）？

十分に可能 ほぼ可能 困難 その他

理由・ご意見

2) 実施機関はプロジェクト終了後に機材の運営・維持管理を自主的に行うと考えられますか？

可能 不明 不可能 その他

理由

7. その他

- 1) その他ご意見等がありましたら記載してください。

--

ご協力ありがとうございました。

Sub village: _____

Date:

Kebele: _____

Serial No.:

Sex: Female Male

Name of interviewer:

Status of Respondent: WaBuB Ex. Co. member WaBuB (resident) WaBuB member (seasonal)

A. Questions to WaBuB residents and seasonal users:

1. How has your income from the forest changed after P-FMA was introduced in August 2005?

increased no change decreased

(1s) How much and why?

2. How do you think will your income from the forest change?

it will increase it will not change it will decrease

(2s) How much and why?

3. Has the introduction of P-FMA changed the way you utilize the forest?

Yes No (Go to Q4)

↓ *Note: answer can be more than one. Put ✓ in the box*

(31) Expansion of homestead and farmland

(32) Tree cutting and improper practice (girdling, debarking, trunk burning, etc)

(33) Management methods of coffee trees in the forest (shade control, planting new seedlings, etc)

(34) Use of forest resource and encouraging natural regeneration

(35) Others (35s) [_____]

(3s) If yes, how? Please tell both advantages and disadvantages of FMA, if any.

4. Have you encountered any conflicts with other WaBuB members, seasonal forest users, or non-members of WaBuB?

Yes No (Go to Q5)

↓ *Note: answer can be more than one. Put ✓ in the box*

(41) Boarder issue

(42) Tree cutting and improper practices (girdling, debarking, trunk burning, etc)

(43) Management of WaBuB executive committee

(44) Livelihood activities (beekeeping, grain mill, others)

(45) Others (45s) [_____]

(4s) If yes, please specify the incidents.

Sub village: _____

Date:

Kebele: _____

Serial No.:

Sex: Female Male

Name of interviewer:

Status of Respondent: WaBuB Ex. Co. member WaBuB (resident) WaBuB member (seasonal)

5. How are you benefited from livelihood activities provided by the project?

5.1 Grain mill

5.1.1 Have you ever used it?

Yes No (Why (511s)[_____], then Go to Q 5.2)

↓

5.1.2 Have your income and expenditure changed?

increased decreased not changed

5.2 Improved beehives

5.2.1 Have you ever used it?

Yes No (Why (521s) [_____], then Go to Q 5.3)

↓

5.2.2 Have your income changed?

increased decreased not changed

↓ **WaBuB Afalo** **WaBuB Chaffee** → (Go to Q6)

5.3 Community well (Afalo)

5.3.1 Have you ever used it?

Yes No (Why (531s)[_____], then Go to Q 6)

↓

5.3.2 Have your health conditions improved?

Yes (Reason (532s1): _____)

No (Reason (532s2): _____)

↓

5.3.3 Have your burden (time) to fetch water decreased?

Yes (Reason (533s1): _____)

No (Reason (533s2): _____)

6. In August 2006, what do you think will P-FMA remain as provisional or become a permanent agreement?

Become a permanent agreement Remain in provisional (Go to Q7)

↓

(6s) Under what conditions (modification of P-FMA) you are going to sign to a permanent agreement

7. Please provide other comments on forest utilization or WaBuB/P-FMA, including your opinions on how to enrich further the existing forest, if any.

Sub village: _____

Date:

Kebele: _____

Serial No.:

Sex: Female Male

Name of interviewer:

B. Questions to non-members of WaBuB:

1. Have you heard of WaBuB?

- I know WaBuB very well. (Go to Q2)
- I have heard of it, but do not know well. (Go to Q2)
- I have never heard of it. (Go to Q4)

2. Please check WaBuB activities you have known/heard

Note: answer can be more than one. Put \checkmark in the box

(21) Forest management (agreement)

(22) Livelihood supports

(23) Others (23s) [_____]

(2s) Please specify activities you've known/heard

3. What do you think are the advantages and disadvantages (potential problems/risks) if FMA is signed at your village?

4. Would you like to form a group/association for forest management (such as WaBuB) yourselves?

- Yes.
- No.
- I do not know. (Go to Q5)



(4s) Why would you like or not?

5. Have you encountered any conflicts with existing WaBuBs in terms of forest management and utilization?

- Yes, I had conflicts.
- No conflicts.



(5s) If yes, please specify.