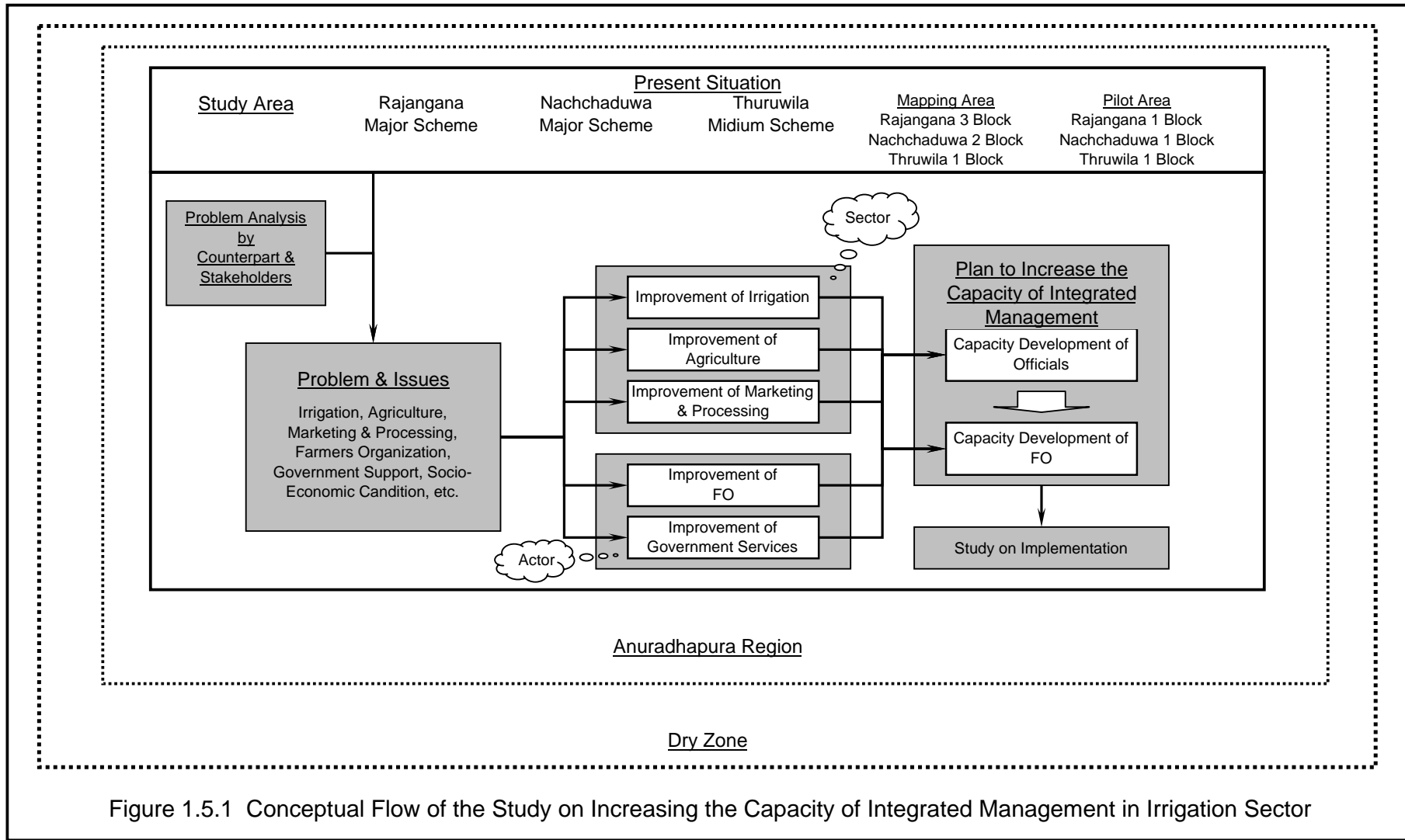
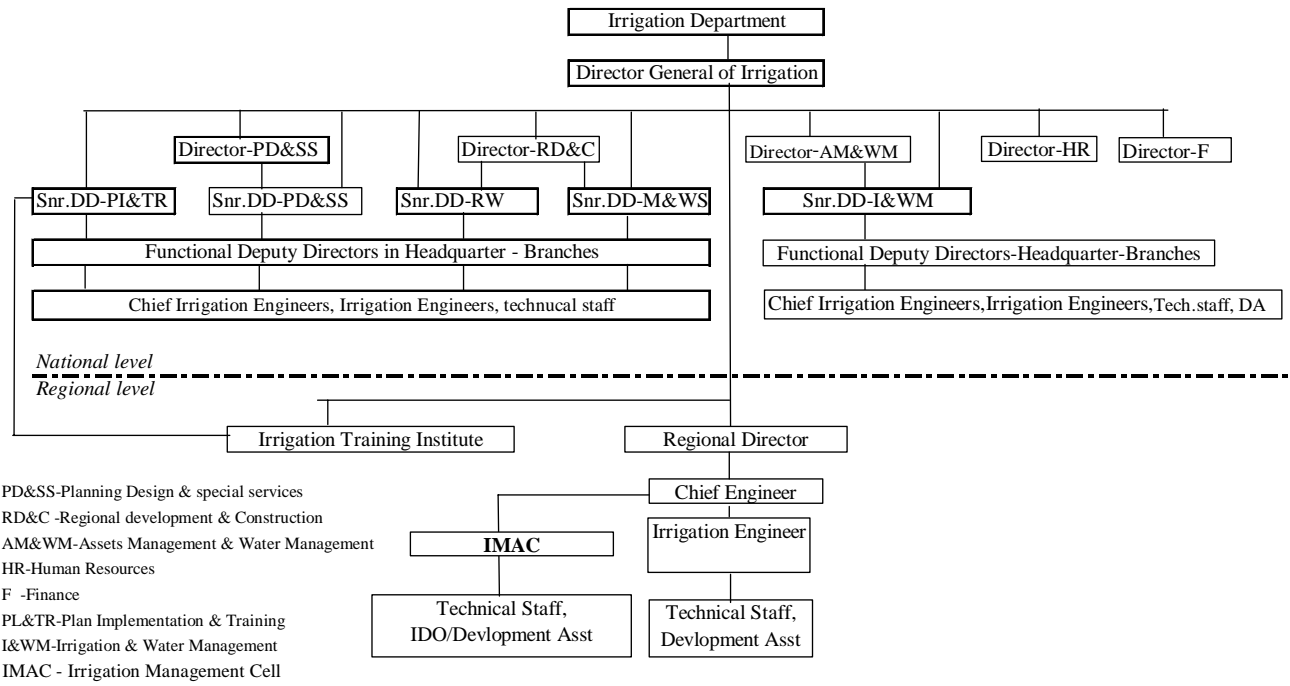
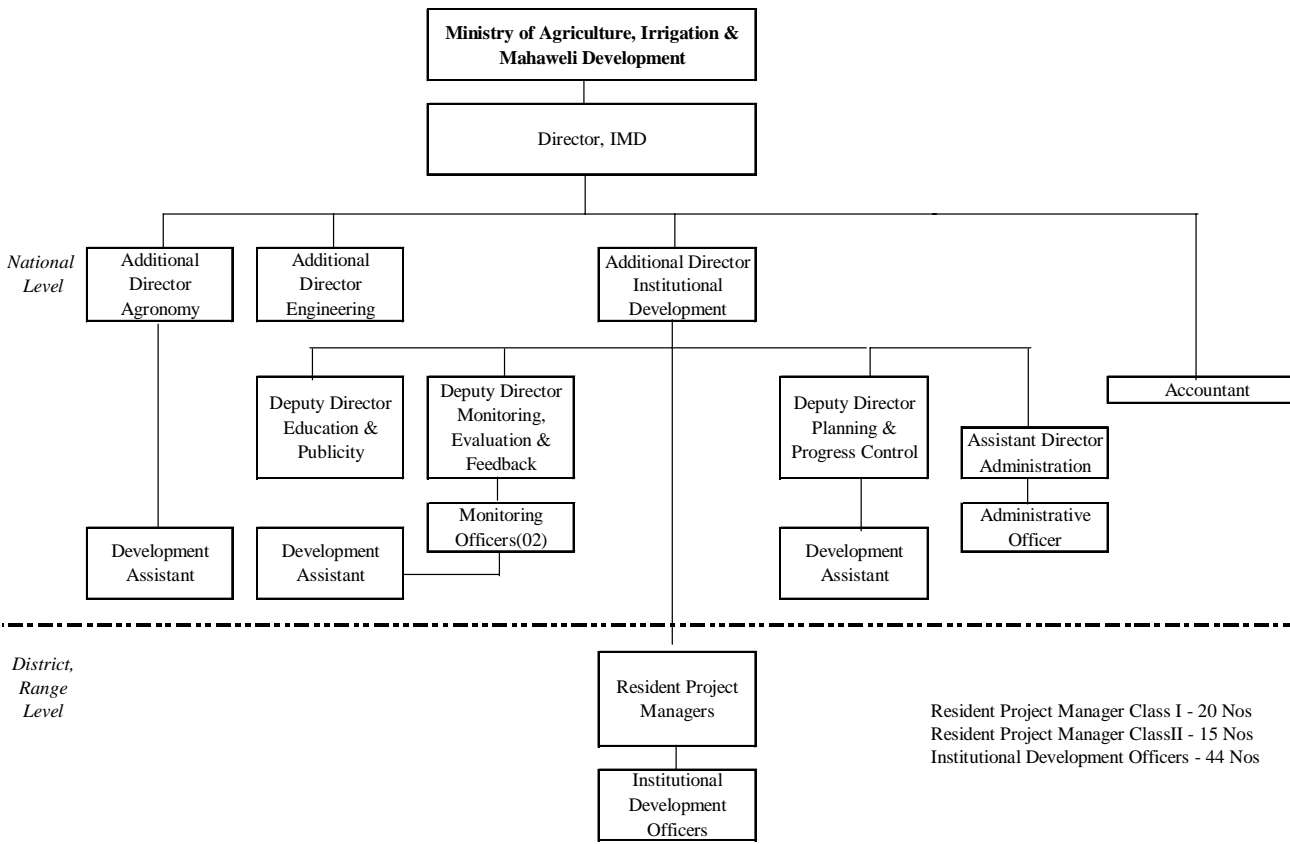


## *Figures*





**Figure 2.2.1 Organization Structure of Irrigation Department**



**Figure 2.2.2 Organization Structure of Irrigation Management Division**

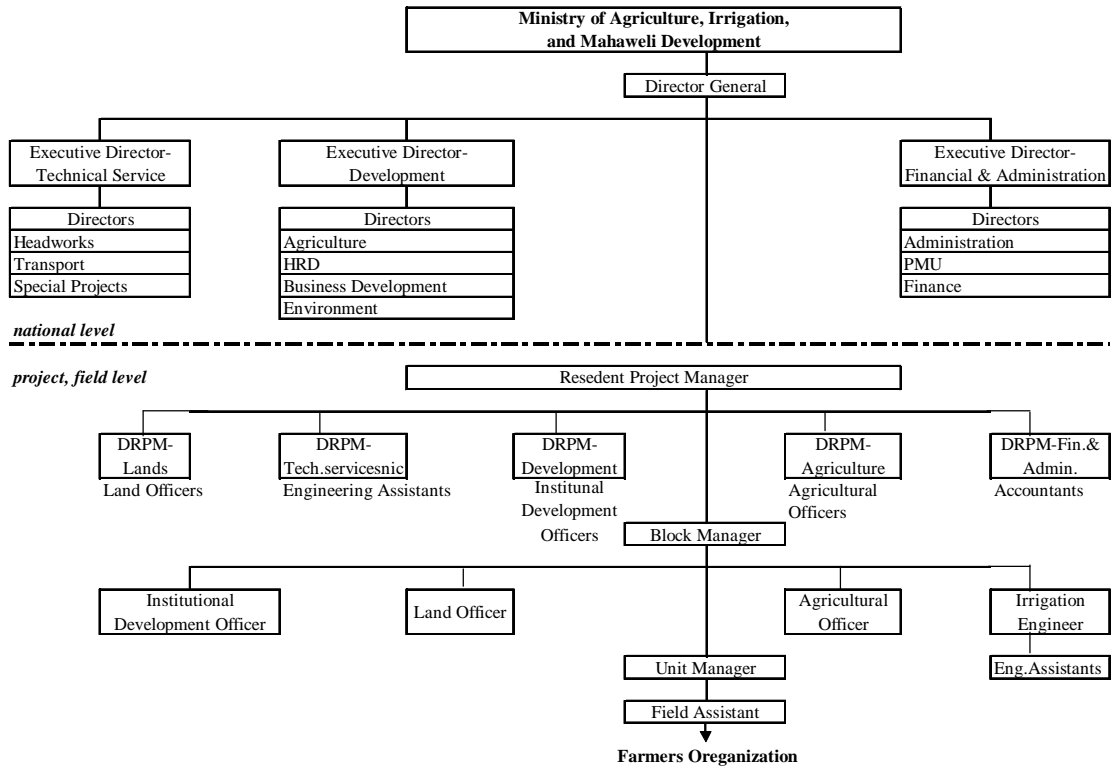


Figure 2.2.3 Organization Structure of Mahaweli Authority of Sri Lanka

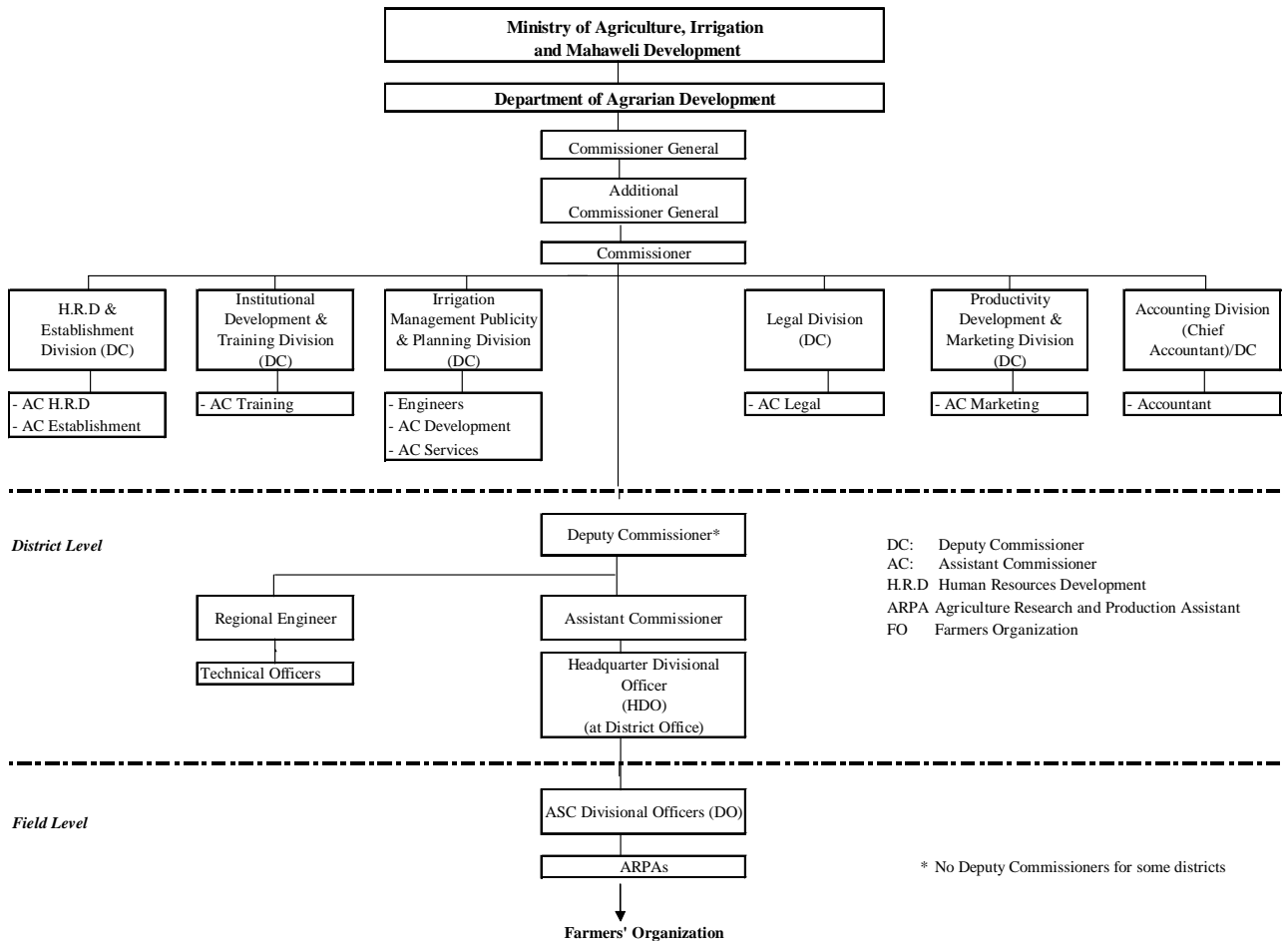
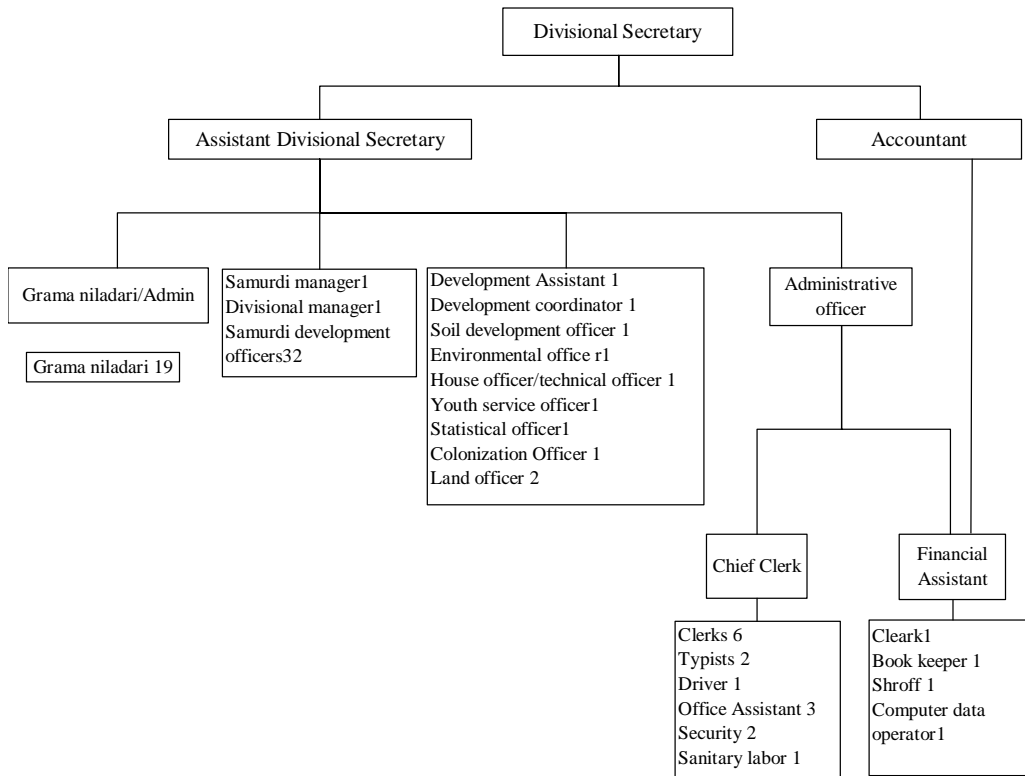
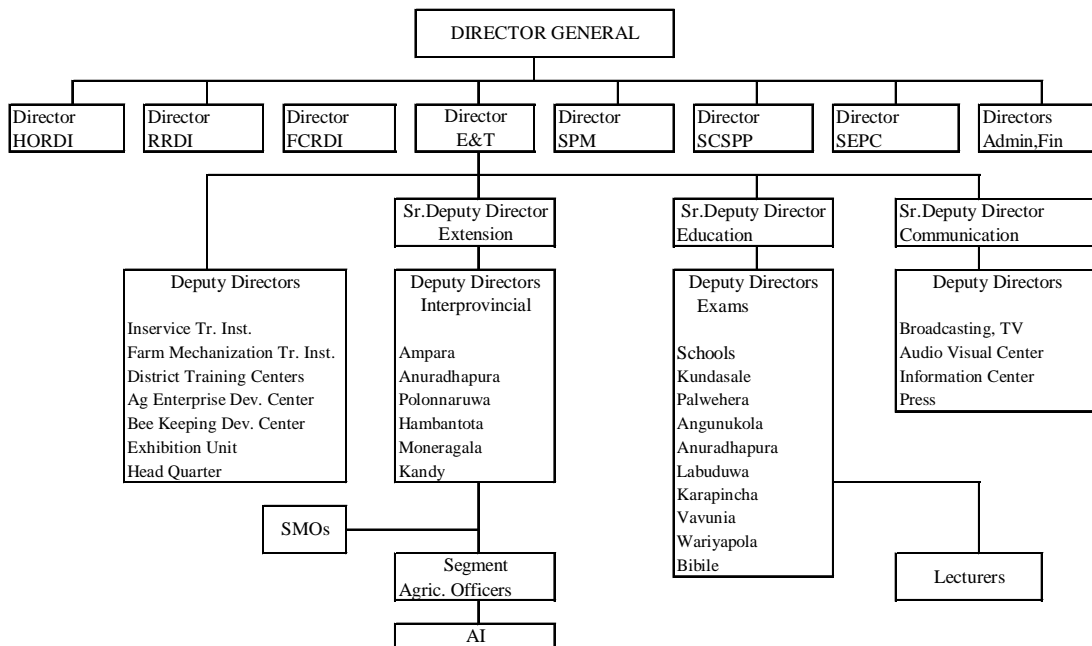


Figure 2.2.4 Organization Structure of Department of Agrarian Development



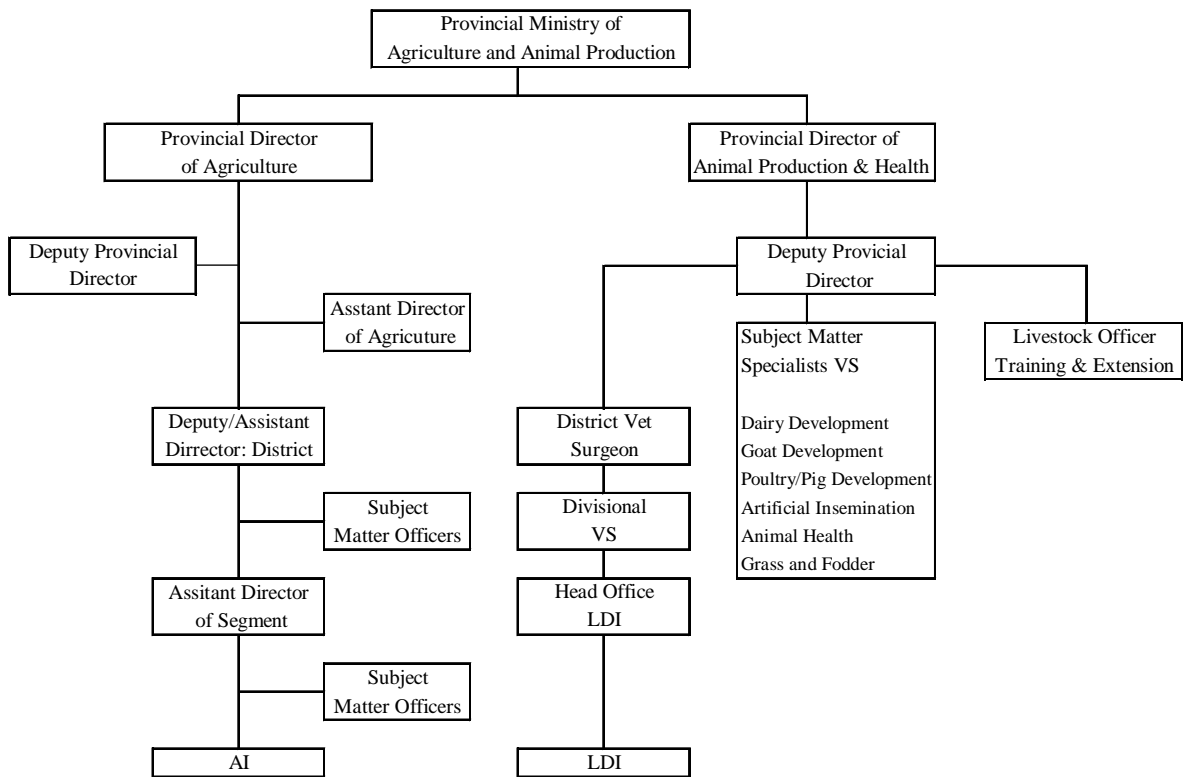
**Figure 2.2.5 Organization Structure of Divisional Secretariat (Nachchaduwa)**



HORDI : Horticultural Research and Development Institute  
 RRD : Rice Research and Development Institute  
 FCRDI : Field Crops Research and Development Institute  
 E&T : Extension and Training Division  
 SPSPP : Seed Certification and Plant Protection  
 SEPC : Socio-Economic Planning Center  
 SPM : Seed and Planting Material Division

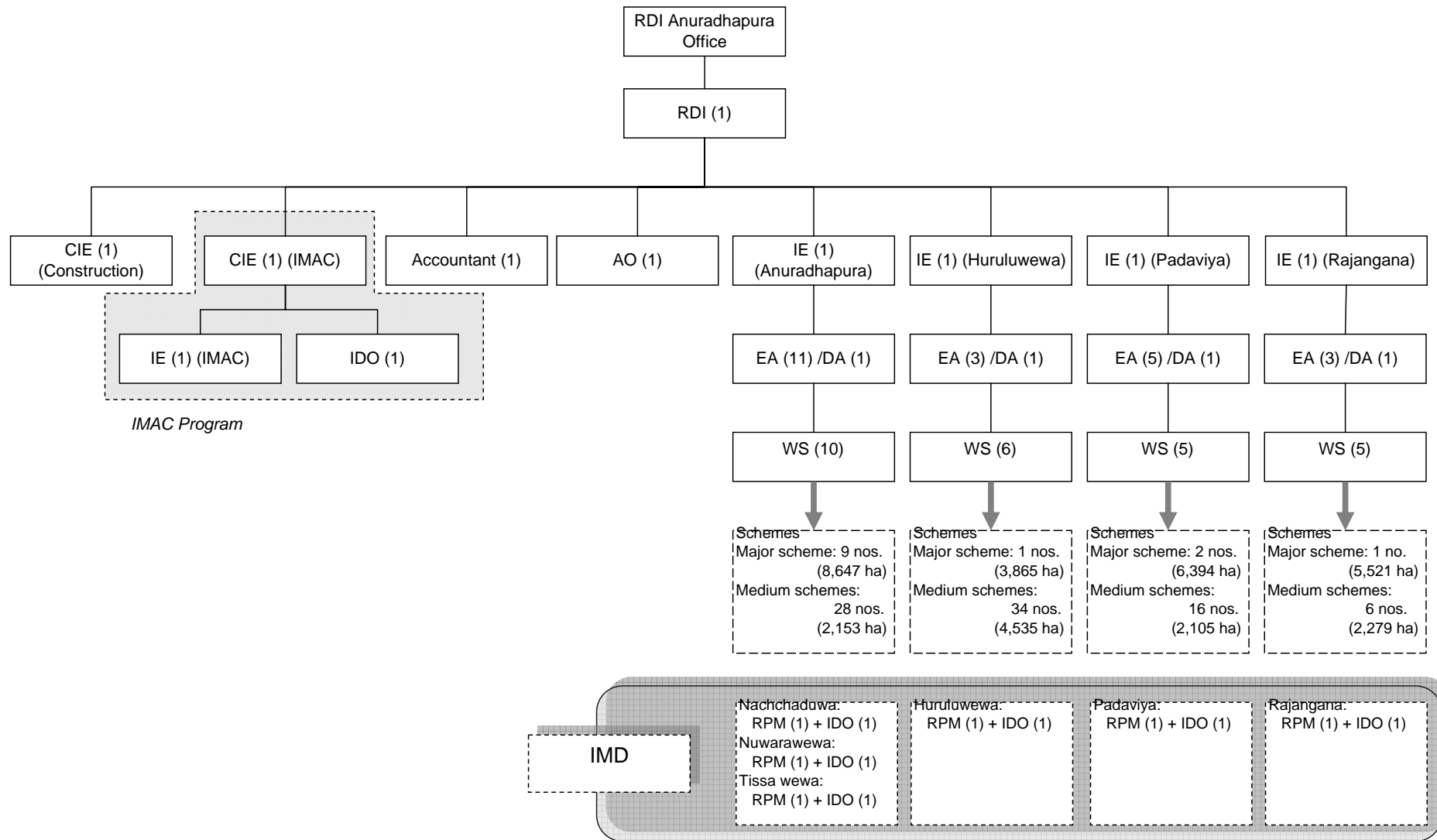
Source: Central Department of Agriculture

**Figure 2.3.1 Organization Structure of Central Department of Agriculture**



Source: Provincial Department of Agriculture, Animal Production and Health, North Central Province

**Figure 2.3.2 Organization structure of Provincial Department of Agriculture and Animal production & Health**



**Figure 3.2.1 Organizational Structure of RDI Anuradhapura Office**

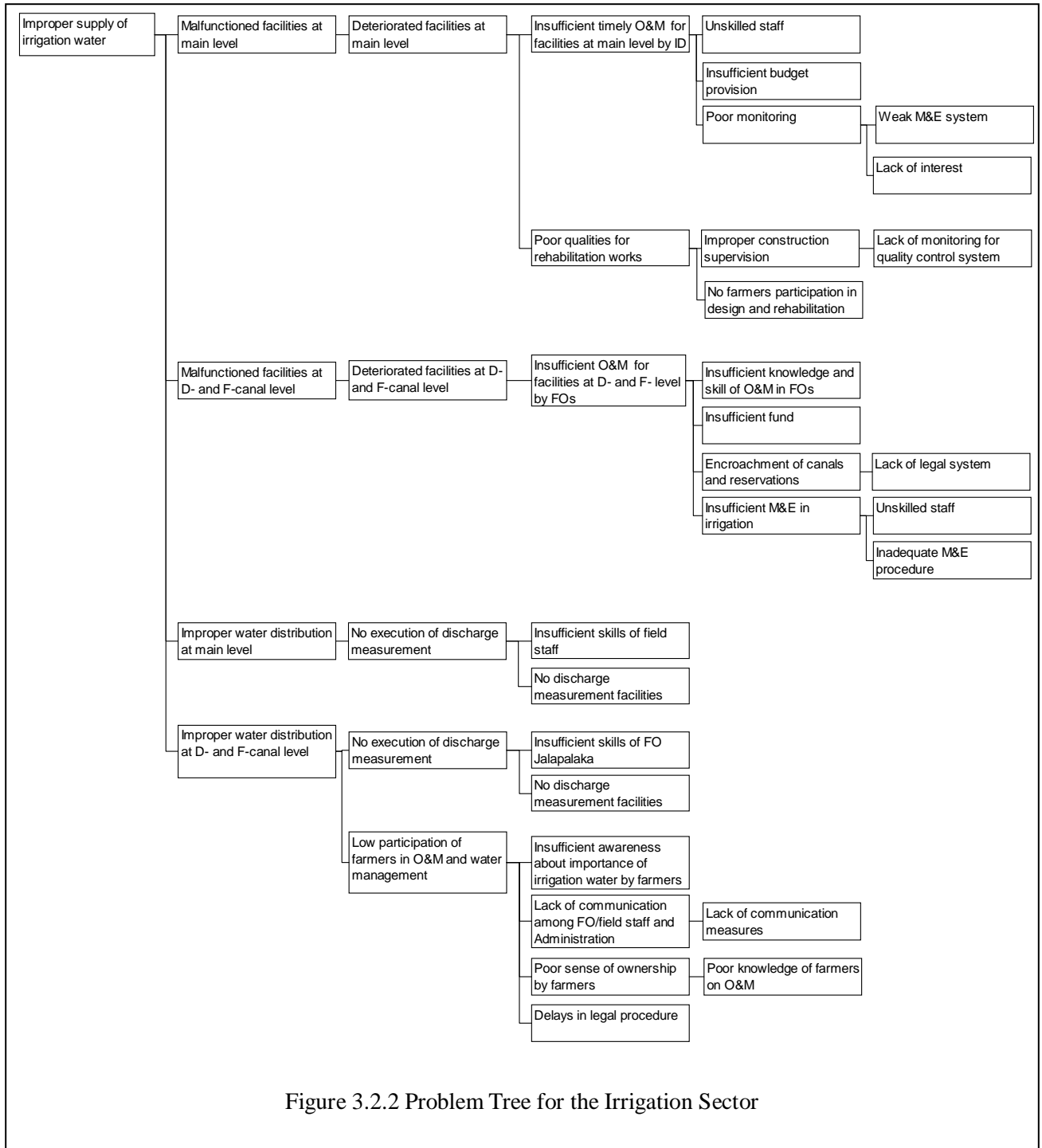


Figure 3.2.2 Problem Tree for the Irrigation Sector



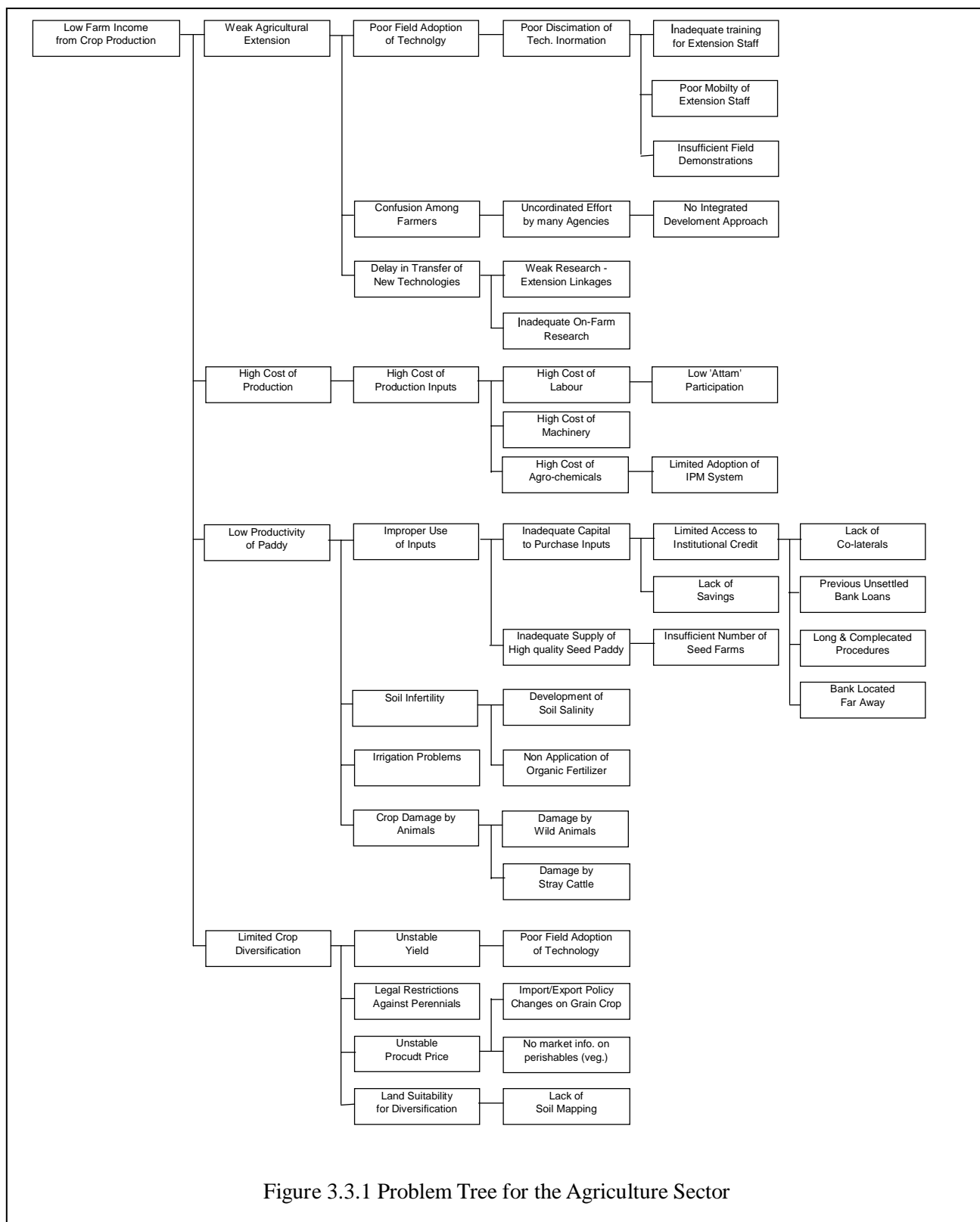


Figure 3.3.1 Problem Tree for the Agriculture Sector

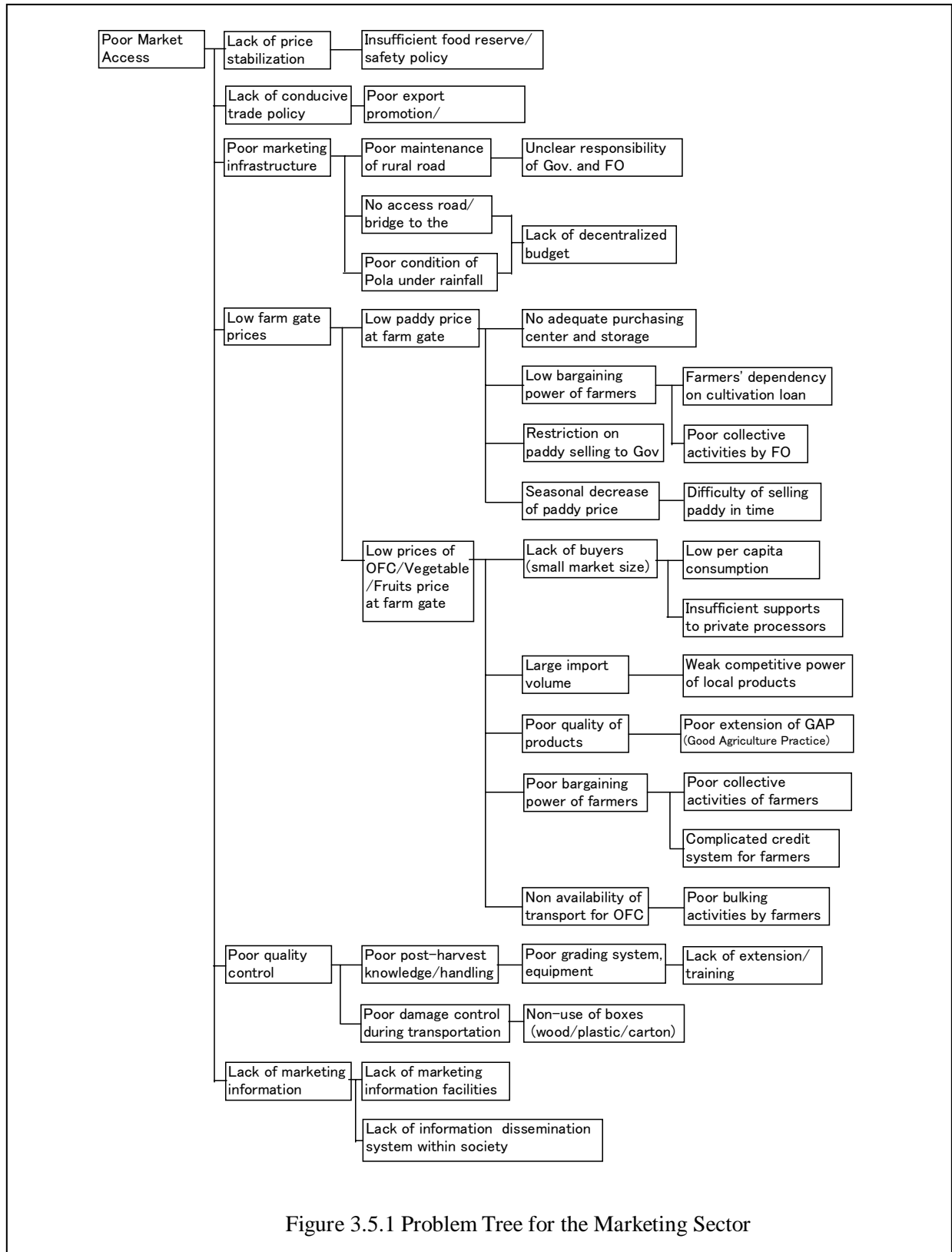


Figure 3.5.1 Problem Tree for the Marketing Sector

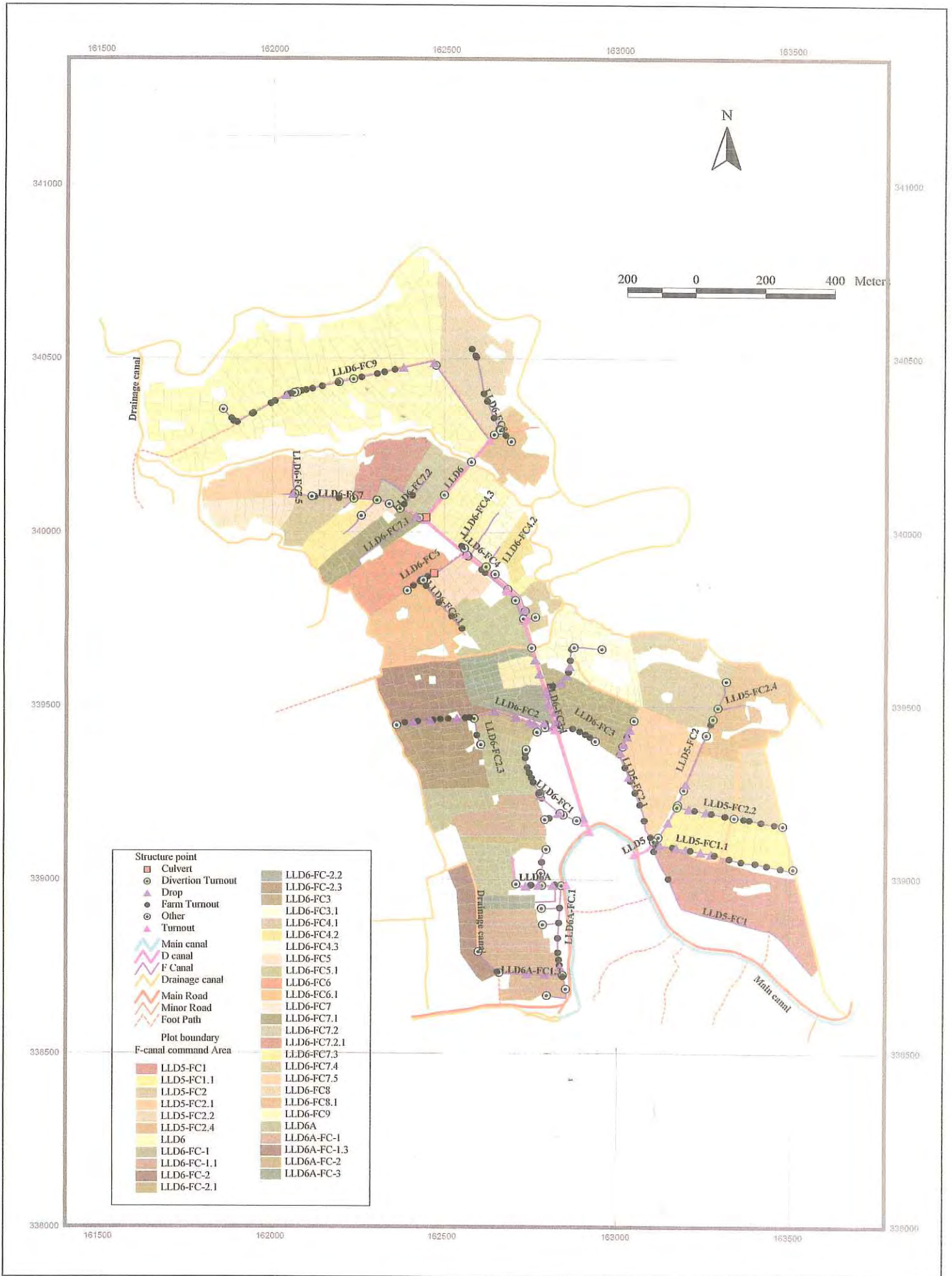


Figure 3.8.1 Location of Facilities (Nachchaduwa Major Scheme - Isuru FO)  
F-10



Figure 3.8.2 Location of Facilities (Thruwila Medium Scheme)

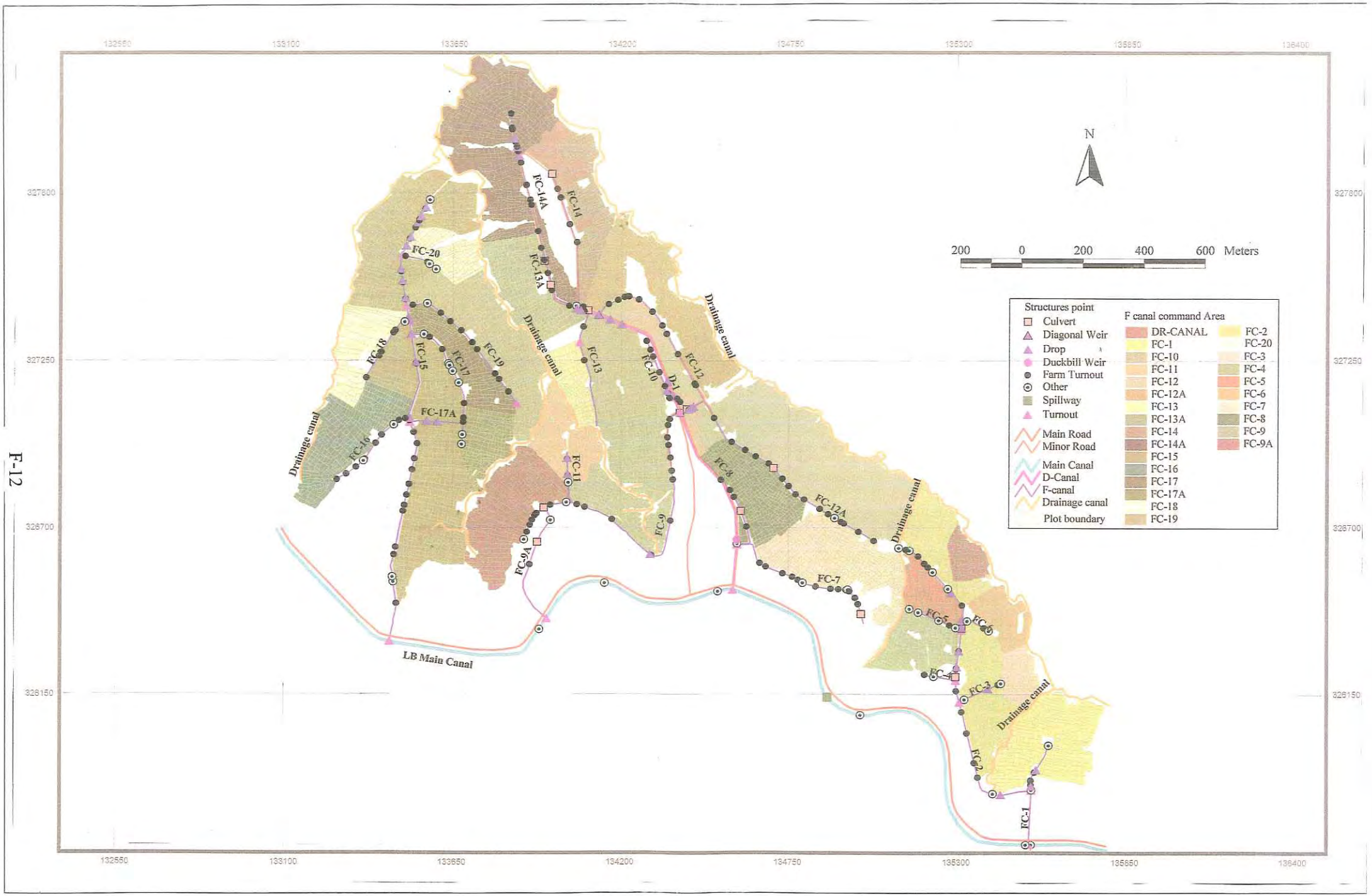


Figure 3.8.3 Location of Facilities (Rajangana Major Scheme – LB Tract 2)

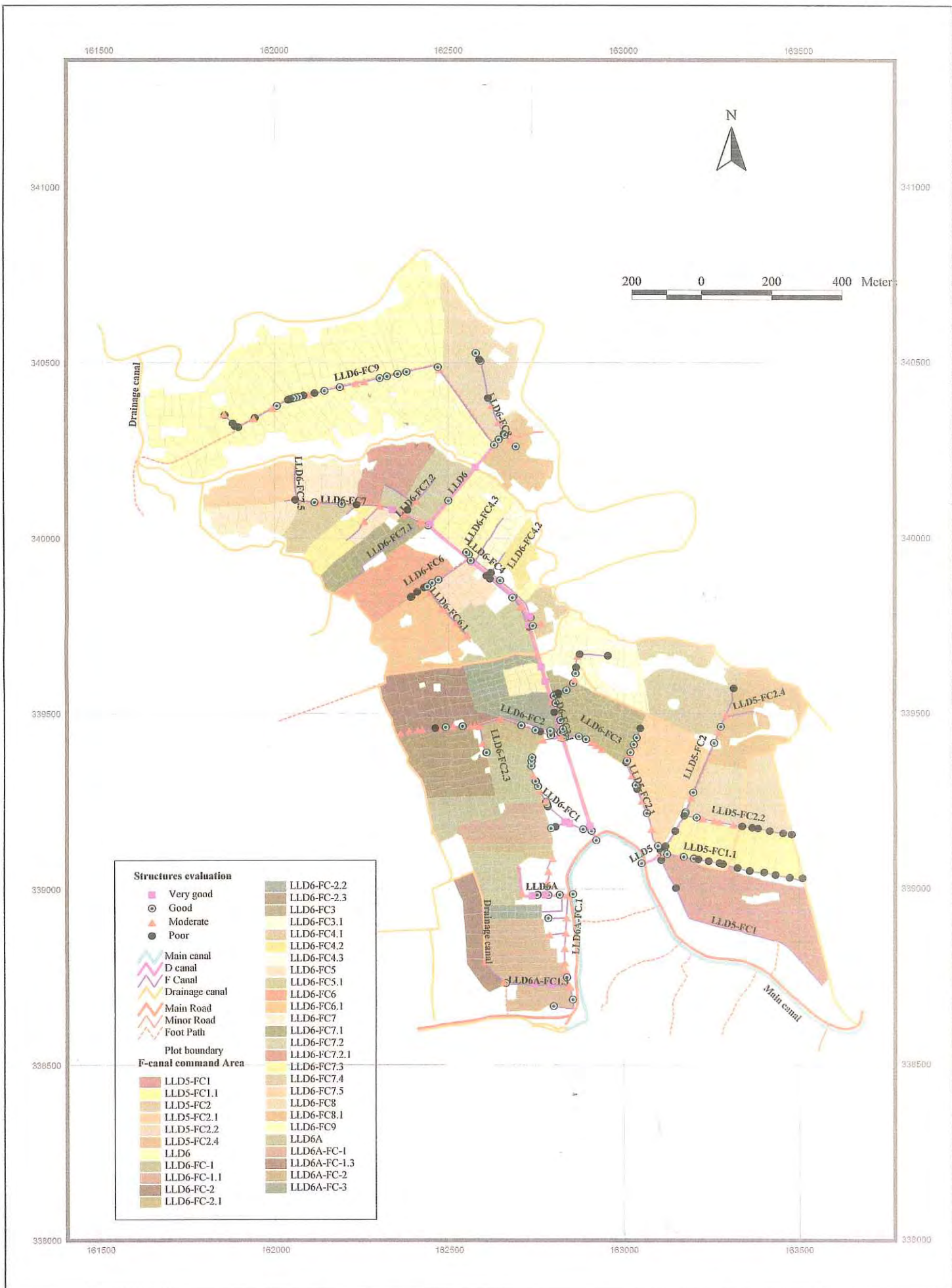


Figure 3.8.4

Evaluation of Facilities (Nachchaduwa Major Scheme - Isuru FO)



Figure 3.8.5 Evaluation of Facilities (Thruwila Medium Scheme)

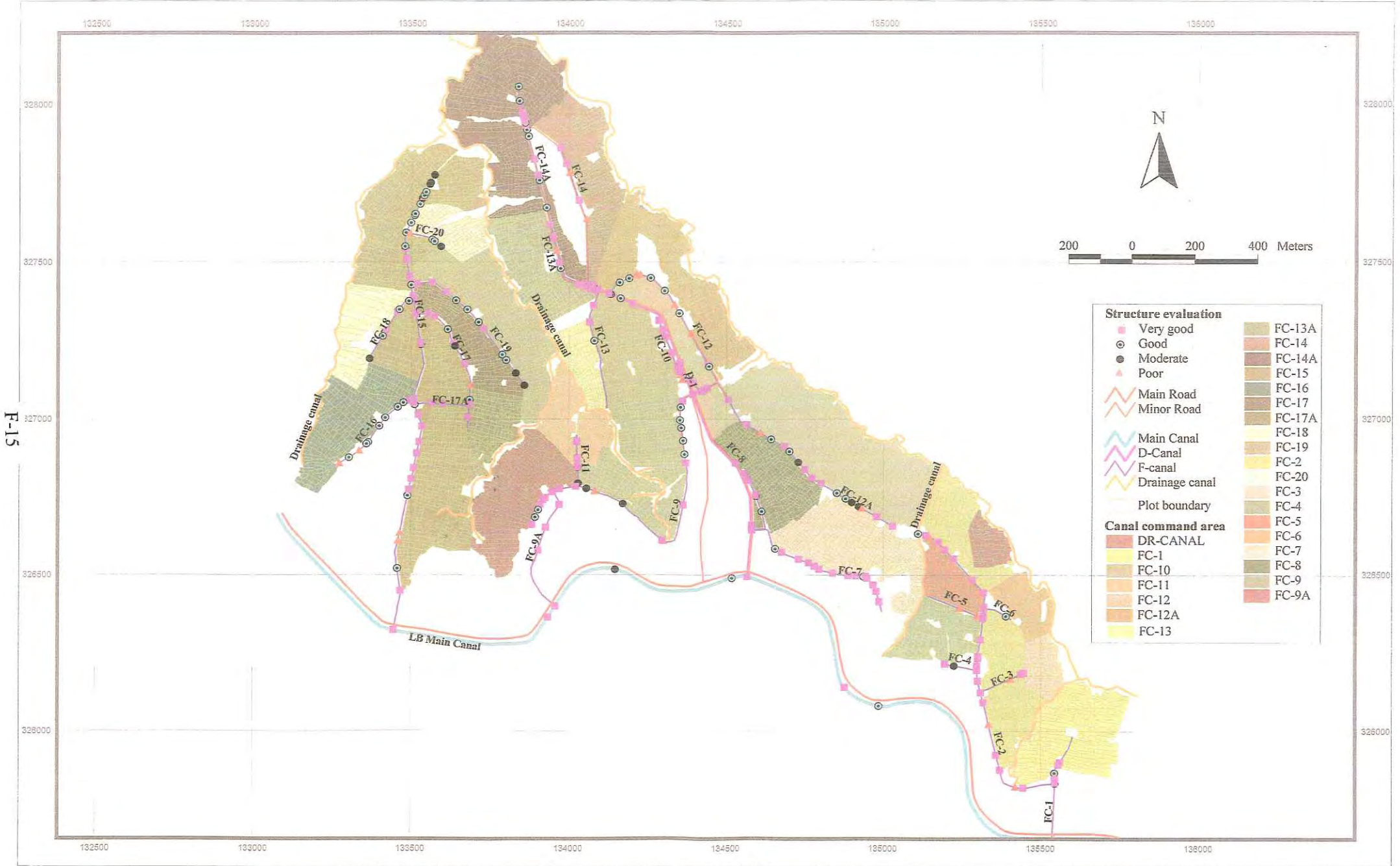


Figure 3.8.6 Evaluation of Facilities (Rajangana Major Scheme – LB Tract 2)



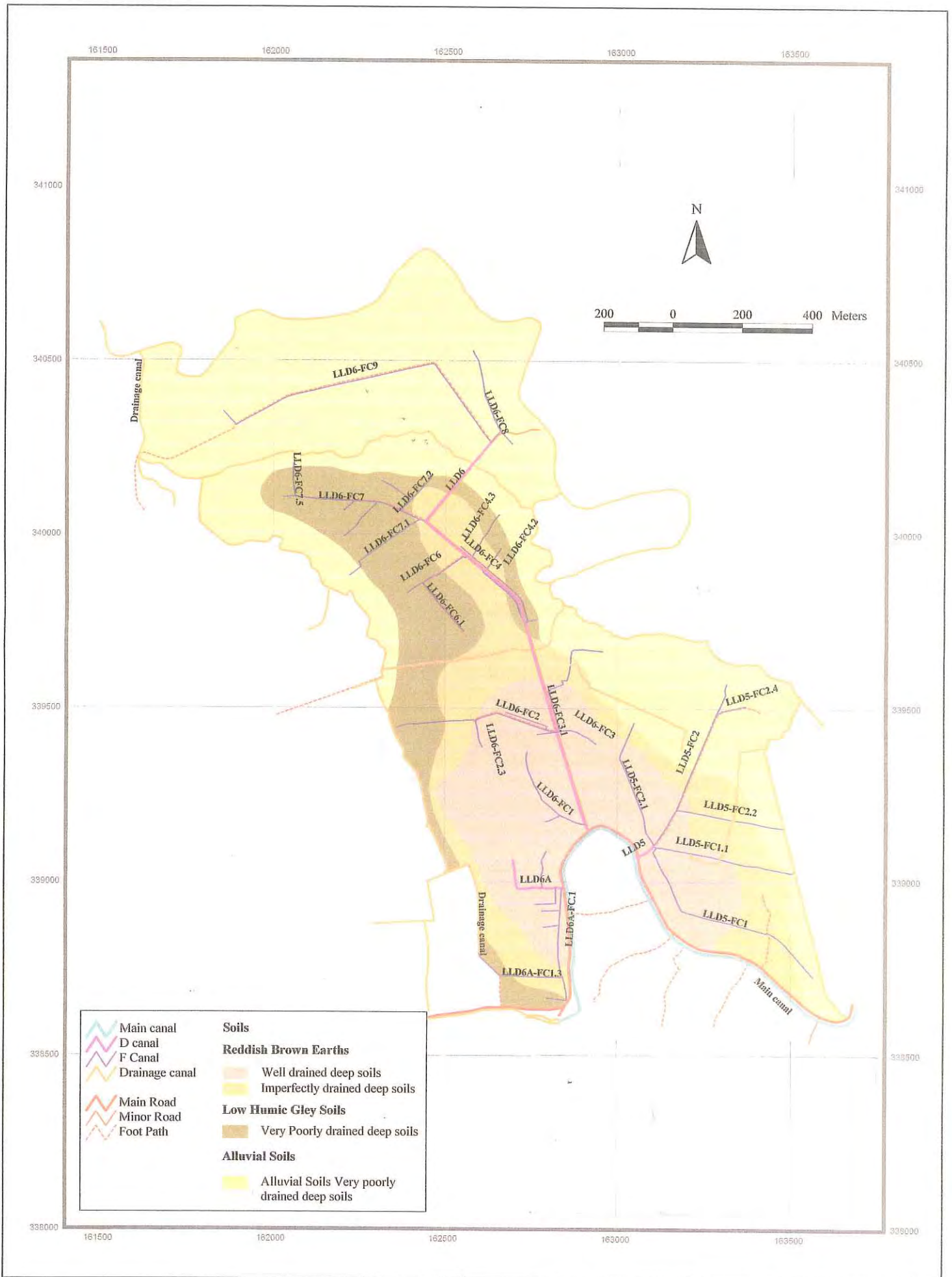


Figure 3.8.7 Textual Classification (Nachchaduwa Major Scheme - Isuru FO)  
F-16

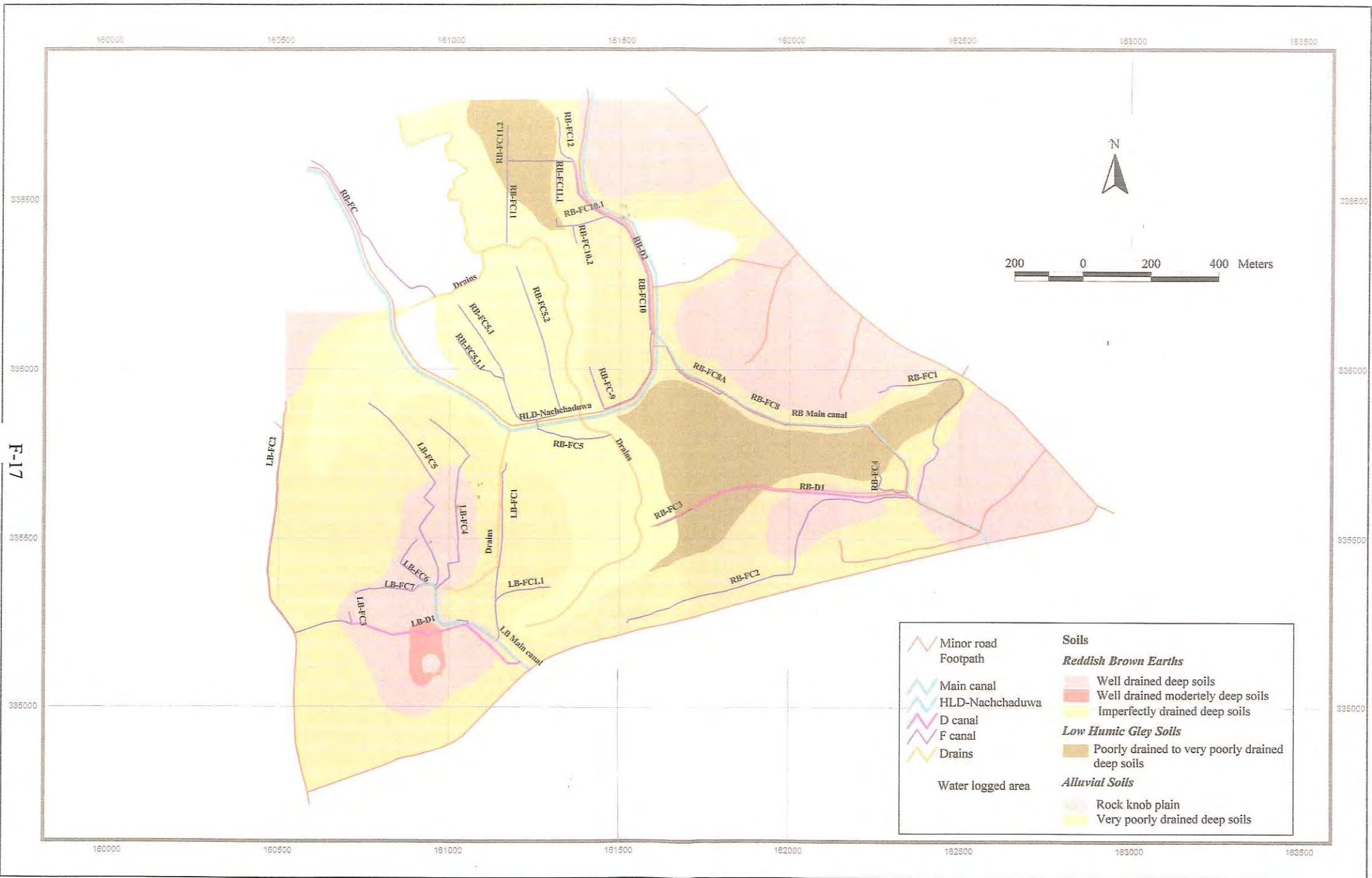


Figure 3.8.8 Textual Classification (Thruwila Medium Scheme)

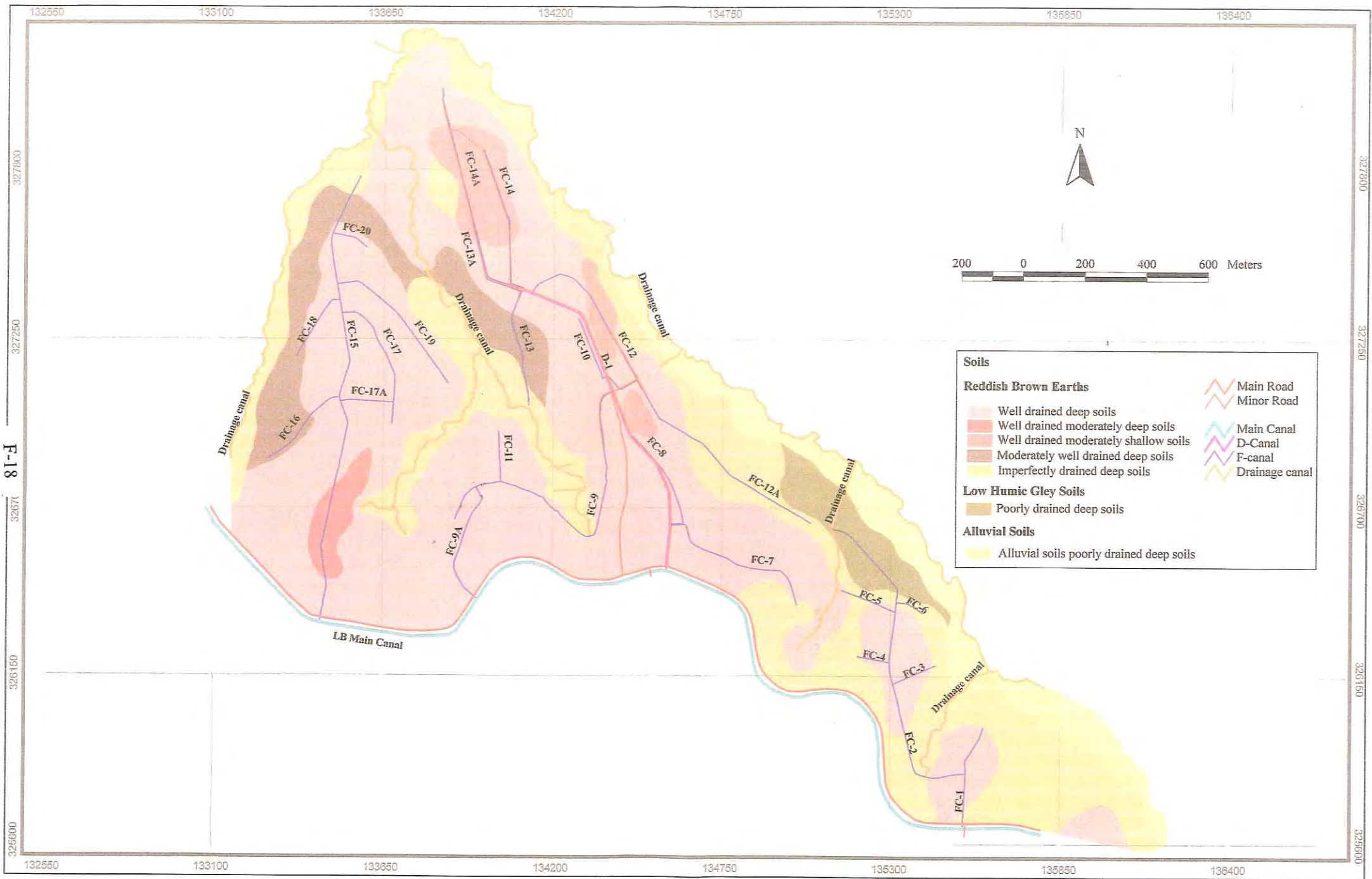


Figure 3.8.9 Textual Classification (Rajangana Major Scheme – LB Tract 2)

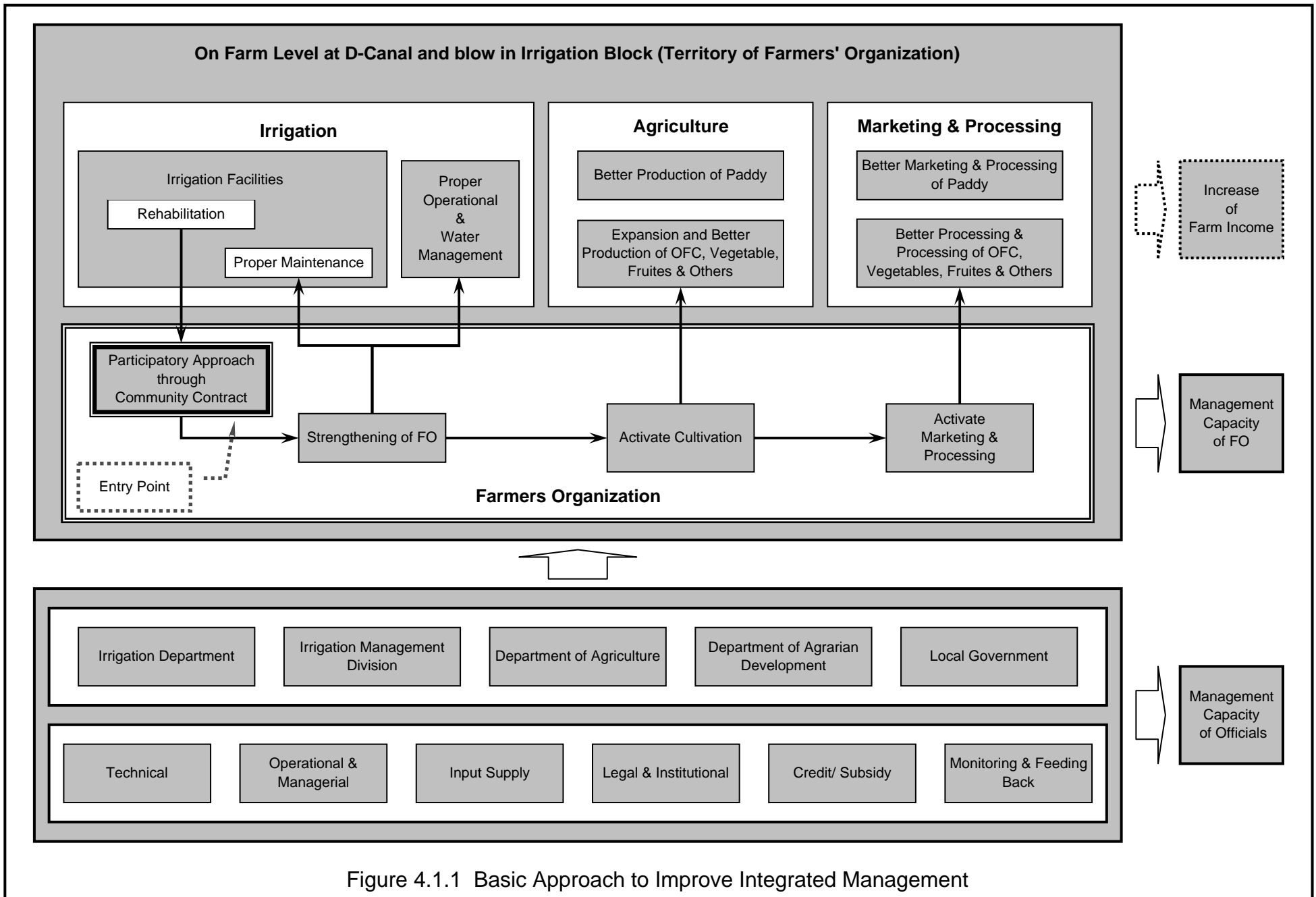


Figure 4.1.1 Basic Approach to Improve Integrated Management

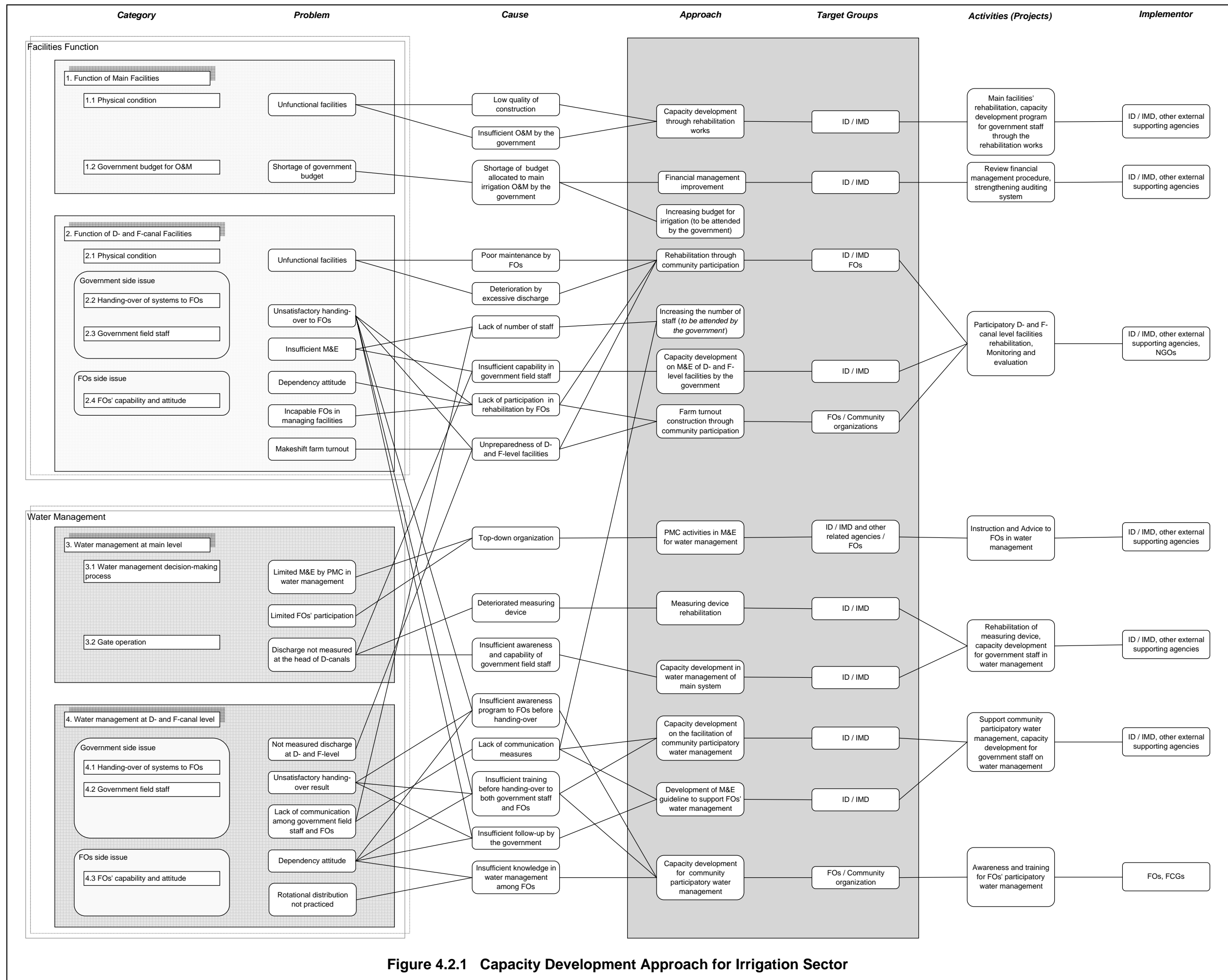


Figure 4.2.1 Capacity Development Approach for Irrigation Sector

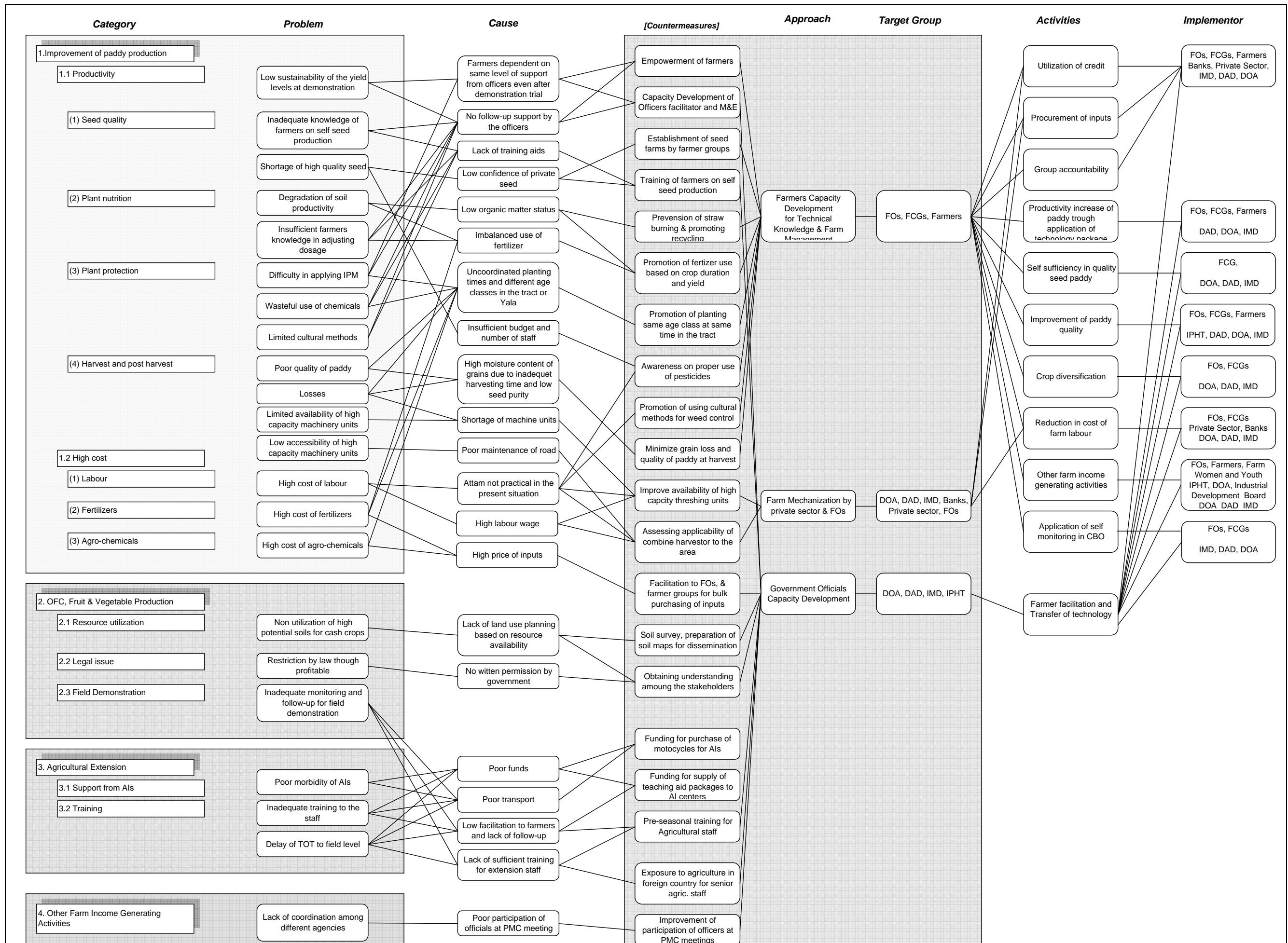


Figure 4.2.2 Capacity Development Approach for Agriculture Sector

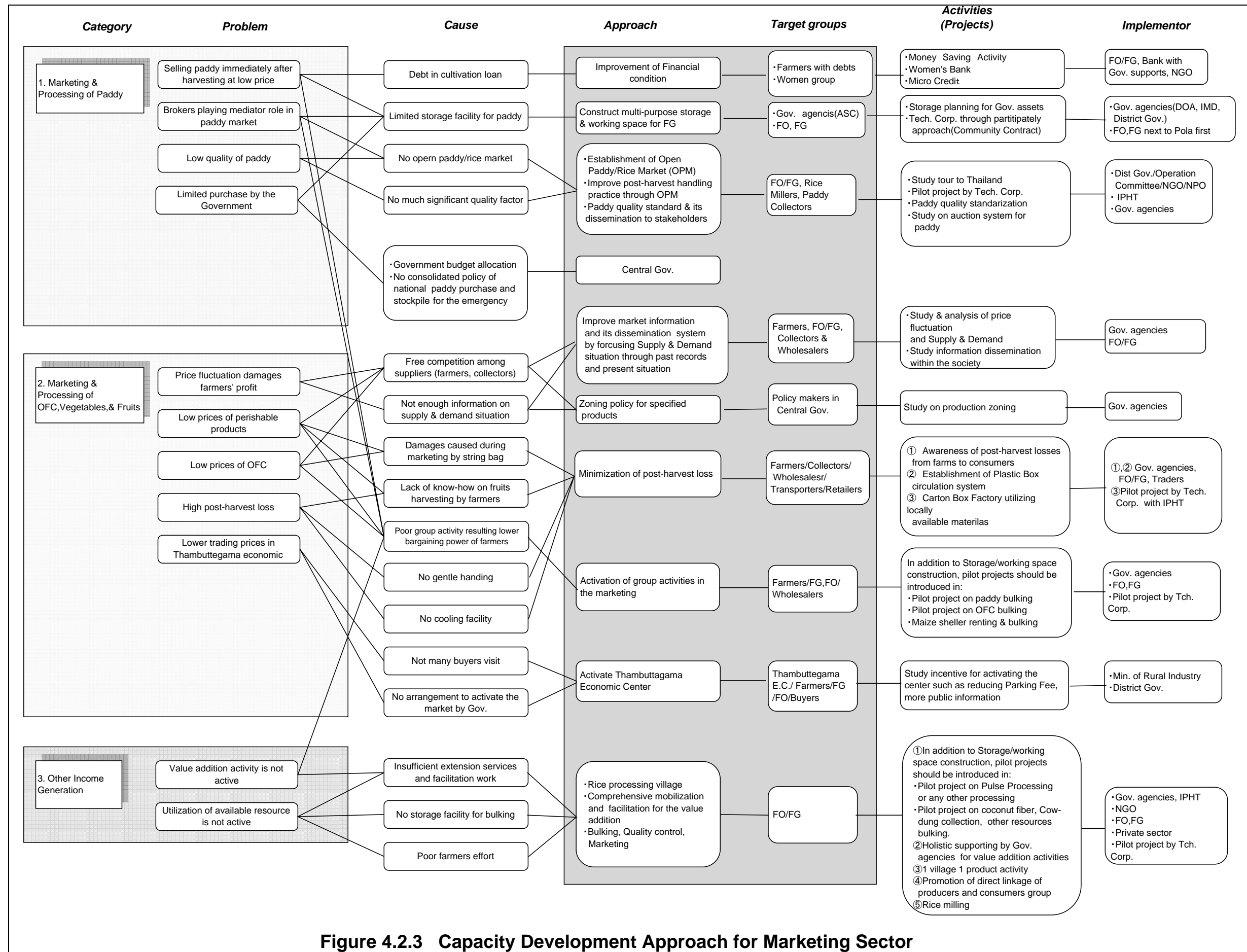
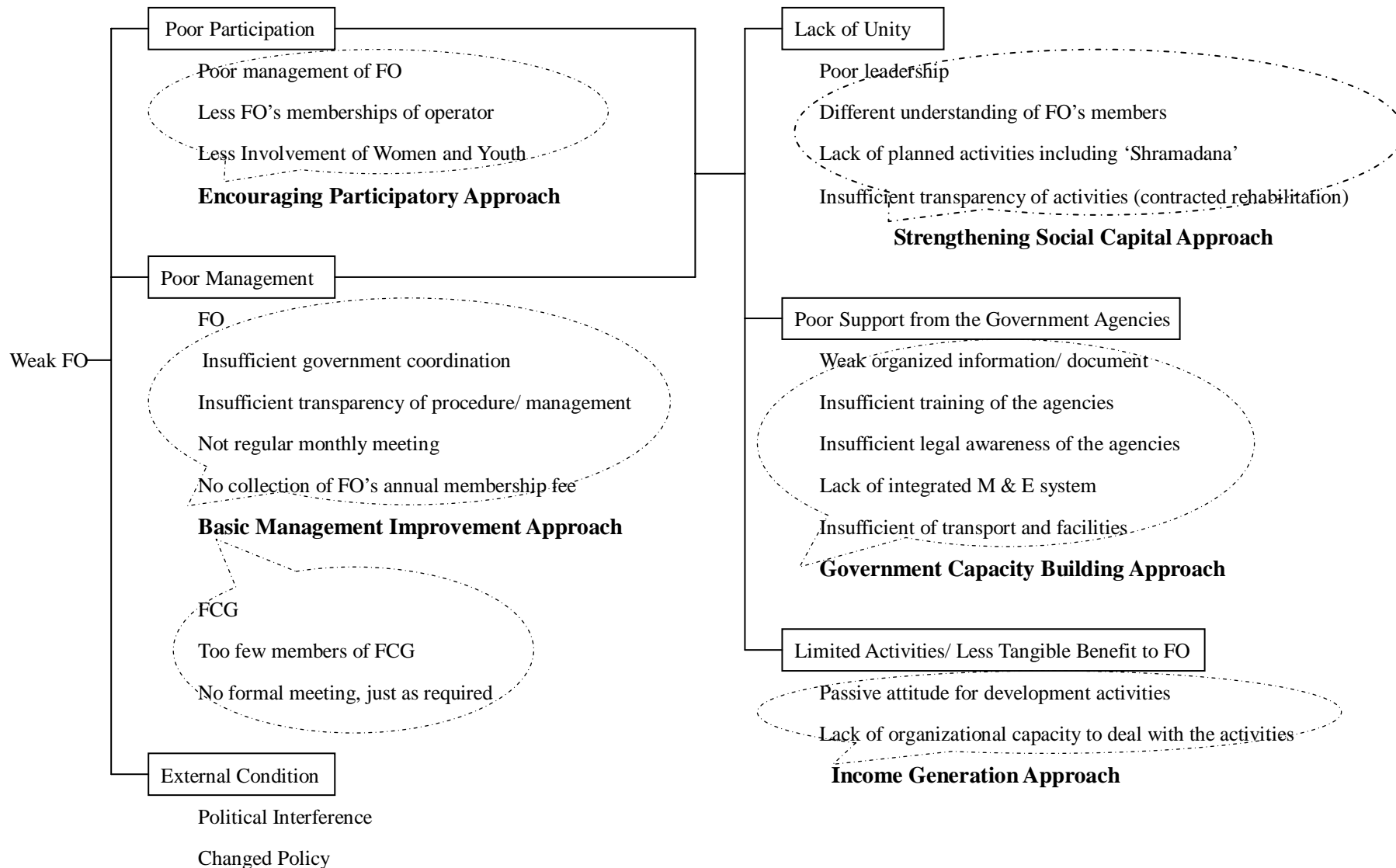


Figure 4.2.3 Capacity Development Approach for Marketing Sector



Source: the JICA Study Team

**Figure 4.2.4 Problems and Causes and Basic Approach for Farmers' Organization**